

Domestic Renewable Heat Incentive

www.ofgem.gov.uk/drhi

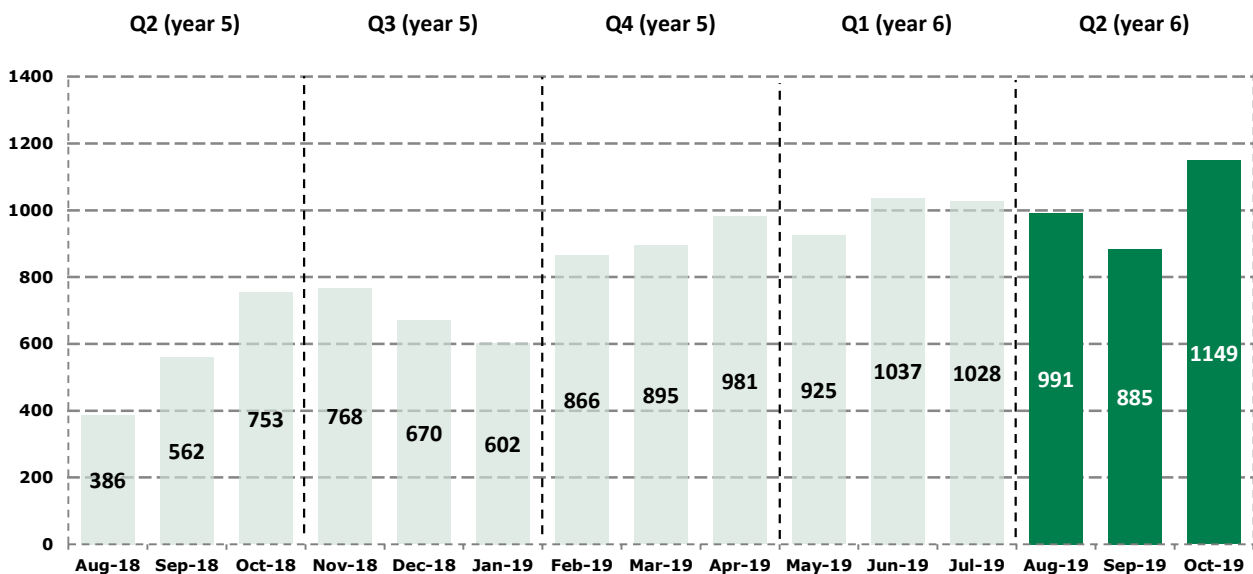
MARCH 2020

Quarterly Report Issue 22

The Domestic Renewable Heat Incentive (RHI) opened for applications on 9 April 2014 for customers across England, Scotland and Wales who install eligible renewable heating technologies in their homes. This report details scheme activity in Quarter 2 (year 6) of the Domestic RHI scheme, covering the period August 2019 to October 2019*.

Number of accreditations

Figure 1: Number of Accreditations made per month



Quarterly Accreditations

Q3 2,040

Nov 18 Jan 19

Q4 2,742

Feb 19 Apr 19

Q1 2,990

May 19 Jul 19

Q2 3,025

Aug 19 Oct 19

74,072

Total number of systems accredited to the scheme.

*As per the Domestic Renewable Heat Incentive regulations, our quarterly reports cover the following periods:

Q1: May to July

Q2: August to October

Q3: November to January

Q4: February to April

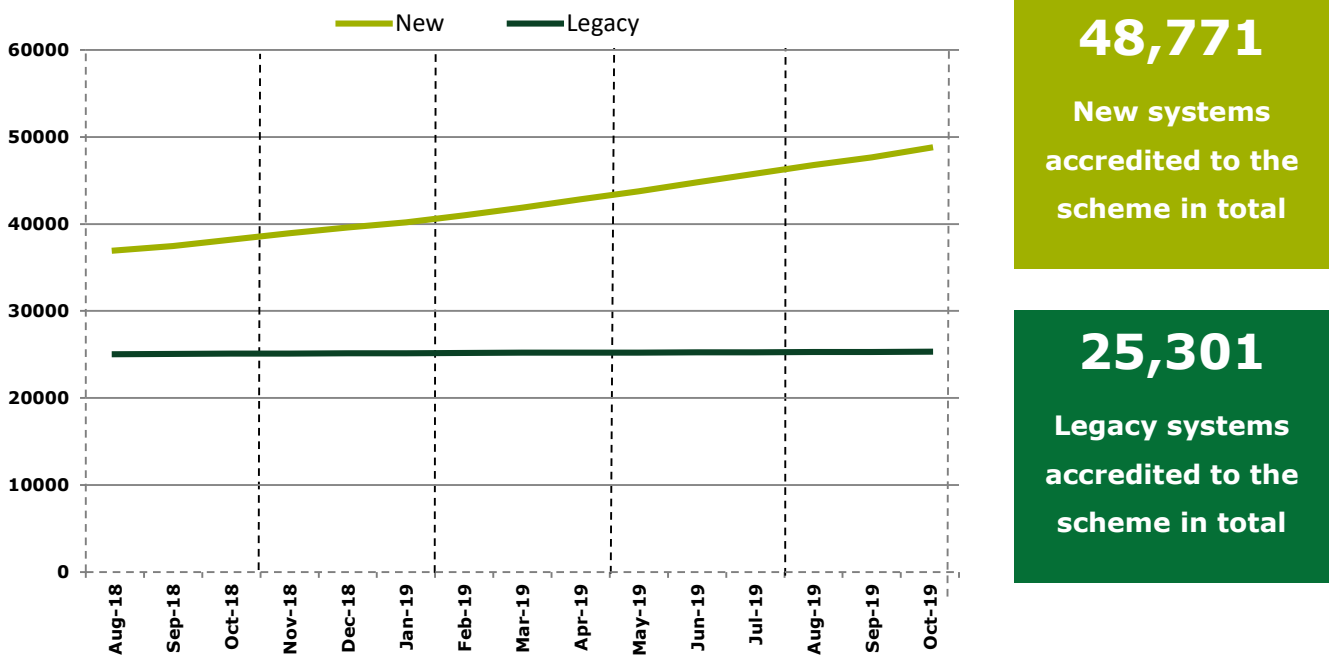
Domestic Renewable Heat Incentive

Legacy and new accreditations

Legacy accreditations are systems that were commissioned between 15 July 2009 when the RHI was first announced by DECC (now BEIS), and 9 April 2014 when the Domestic RHI scheme launched. New systems are those that were commissioned on or after 9 April 2014.

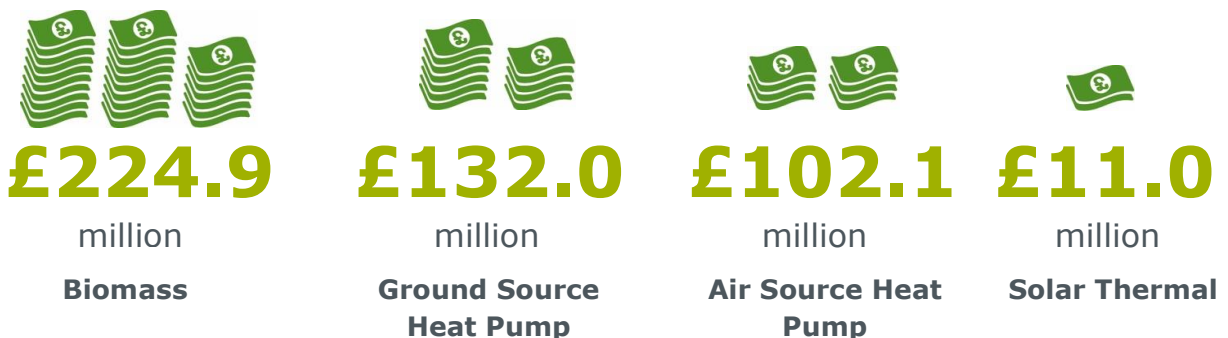
Q2 (year 5)		Q3 (year 5)		Q4 (year 5)		Q1 (year 6)		Q2 (year 6)	
Legacy New		Legacy New		Legacy New		Legacy New		Legacy New	
69	1,632	64	1,976	62	2,680	44	2,946	48	2,977

Figure 2: Cumulative Accreditations by application type



Payments made to date

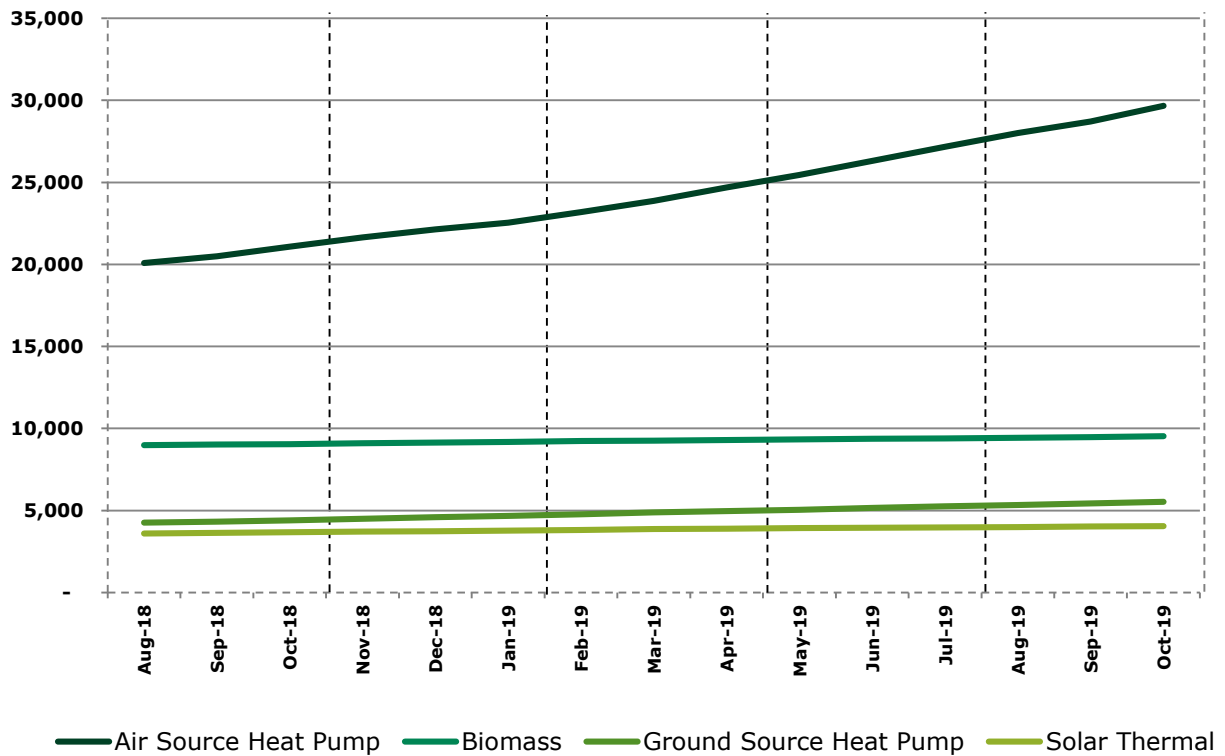
The total number of payments made to accredited systems since the scheme began, by technology type.



Accreditations by technology for new applications

The graph below shows the cumulative number of accredited systems per technology type for new systems only (systems commissioned on or after 9 April 2014). The total number of new accredited systems for Ground Source Heat Pumps has continued to exceed those for Solar Thermal systems. The biggest increase this quarter has been in Air Source Heat Pumps.

Figure 3: Cumulative Accredited System per technology type for New systems



Air Source Heat Pump		Biomass	
Q2 Total	Cumulative	Q2 Total	Cumulative
2,502	29,661	129	9,524

Ground Source Heat Pump		Solar Thermal	
Q2 Total	Cumulative	Q2 Total	Cumulative
268	5,532	78	4,054

Seasonal Performance Factors

The SPF of a heat pump is a measure of how efficiently it is operating. The higher the SPF, the more energy efficient the system is. Only heat pumps with SPFs of 2.5 or higher can be eligible for Domestic RHI. All legacy systems were automatically assigned an SPF of 2.5, unless the applicant provided SPF calculations completed by the installer.

Figure 4: Air Source Heat Pump SPF's

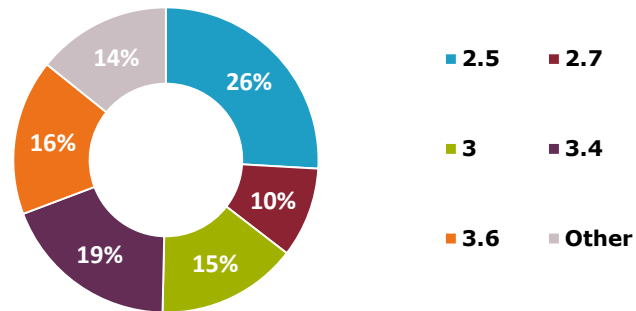
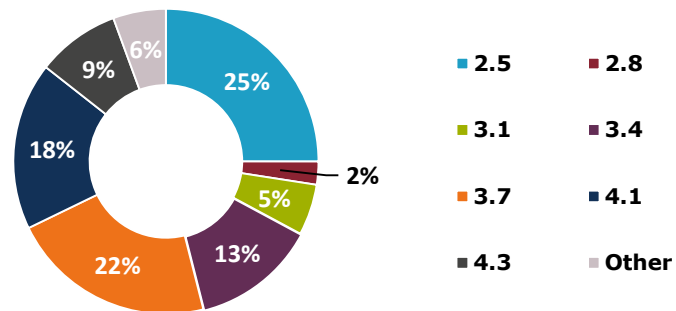


Figure 5: Ground Source Heat Pump SPF's

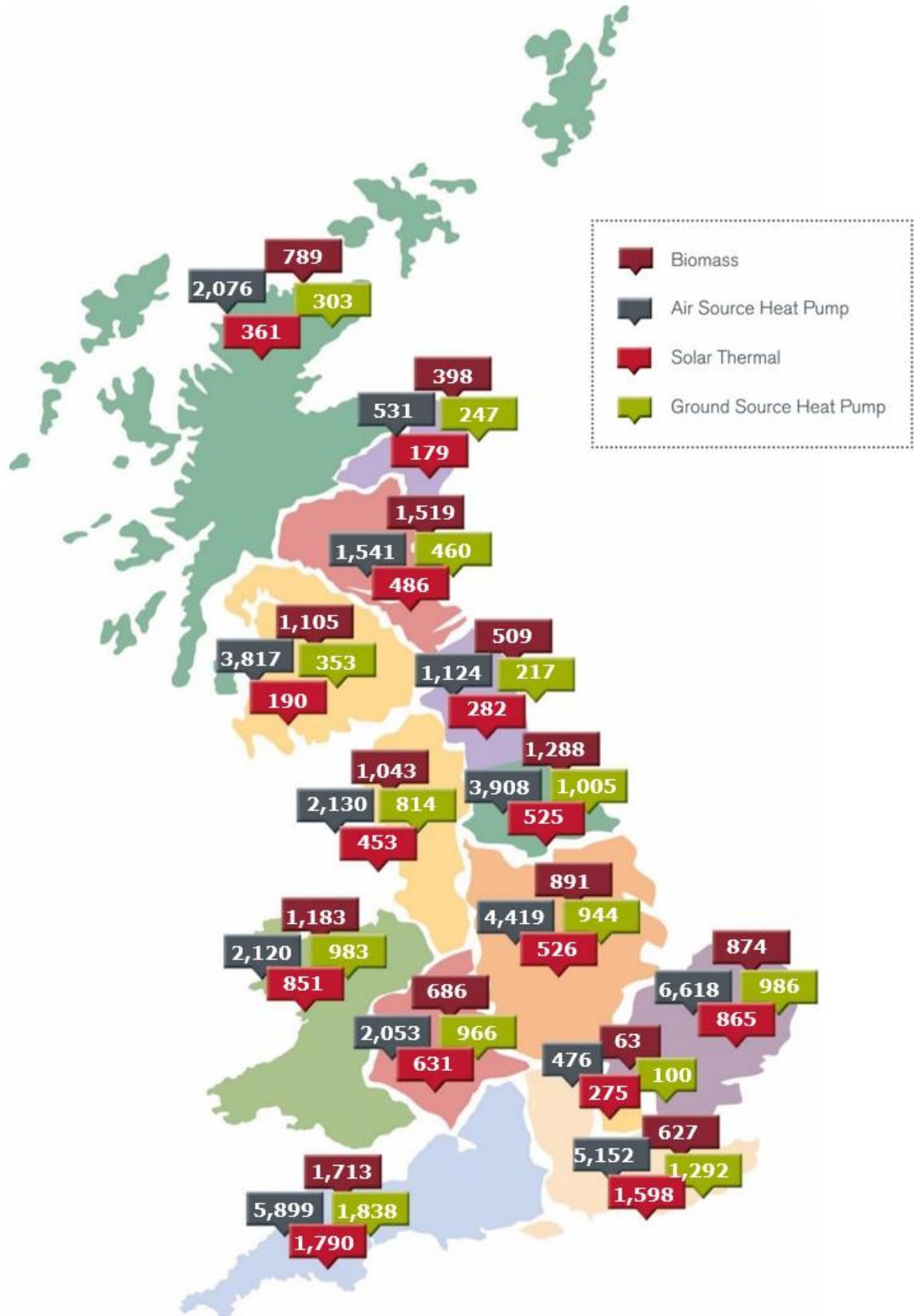


Regional distribution of accreditations

Table 1: Total accreditations per region (up to 31 Oct 2019)

Location	ASHP	Biomass	GSHP	Solar Thermal	Grand Total	% increase from Q1
South West England	5,899	1,713	1,838	1,790	11,240	2.7%
East England	6,618	874	986	865	9,343	4.1%
South East England	5,152	627	1,292	1,598	8,669	3.6%
East Midlands	4,419	891	944	526	6,780	5.3%
Yorkshire and The Humber	3,908	1,288	1,005	525	6,726	3.5%
South West Scotland	3,817	1,105	353	190	5,465	3.1%
Wales	2,120	1,183	983	851	5,137	2.5%
North West England	2,130	1,043	814	453	4,440	1.8%
West Midlands	2,053	686	966	631	4,336	2.7%
East Scotland	1,541	1,519	460	486	4,006	3.1%
Highlands & Islands	2,076	789	303	361	3,529	5.1%
North East England	1,124	509	217	282	2,132	3.9%
North East Scotland	531	398	247	179	1,355	2.4%
London	476	63	100	275	914	5.3%
Grand Total	41,864	12,688	10,508	9,012	74,072	3.4%

Figure 6: Regional distribution of accredited systems by technology type



Registered Social Landlords (RSLs)

In addition to homeowners, Registered Social Landlords (RSLs) are also eligible to apply for the Domestic RHI. In the last twelve months, 2,203 accreditations have been made to RSLs, 99.8% (2,198) of which are Air Source Heat Pumps.

Figure 7: RSL accreditations by technology type

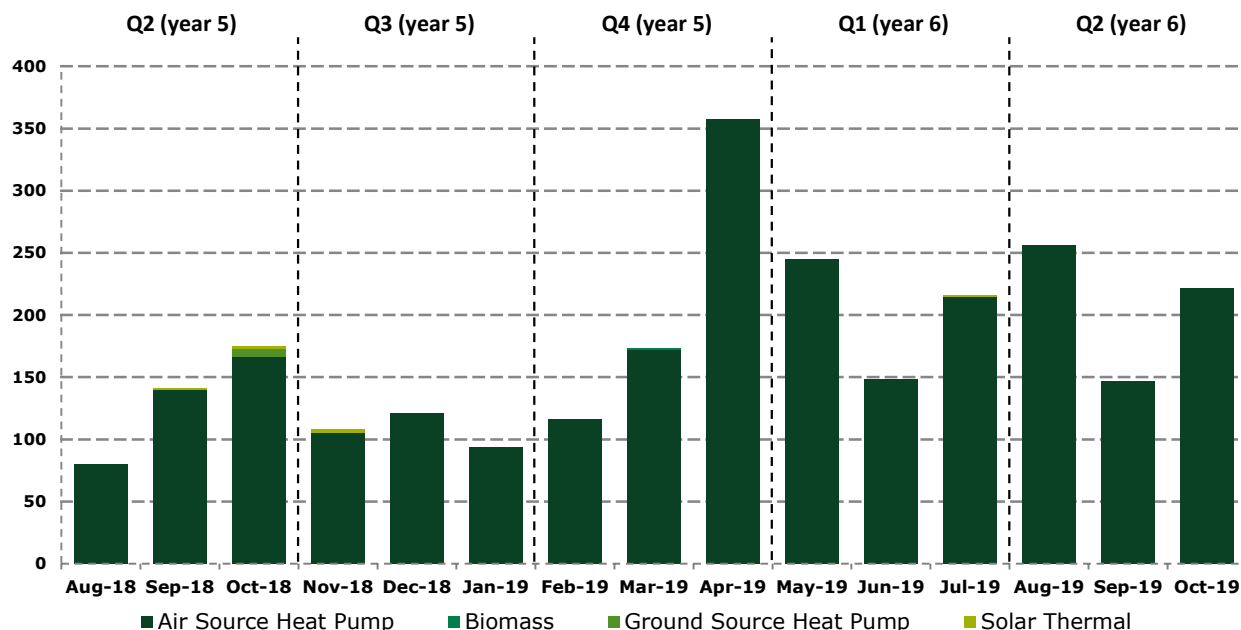


Table 2: RSL accreditations Q2 (Year 6)

Month Accredited	ASHP	Biomass	GSHP	Solar Thermal	Total
August 19	265	0	0	0	265
September 19	147	0	0	0	147
October 19	222	0	0	0	222
Quarter Total	625	0	0	0	625

In total, we have made over **£28.8m** of payments to Registered Social Landlords under the DRHI scheme to date.

Our Administration

- **84.5%** of applications submitted in this quarter received a decision within 30 working days.
- We estimate that accredited systems will save over **4.75 Mt** of CO₂ over the lifetime of the scheme.
- Since scheme launch, accredited systems have generated of **4,111,000 MWh** of renewable heat.
- If you have any questions about the content of this report, please let us know by emailing DRHIResolutions@ofgem.gov.uk.