

Domestic Renewable Heat Incentive Quarterly Report Update

www.ofgem.gov.uk/domestic-renewable-heat-incentive

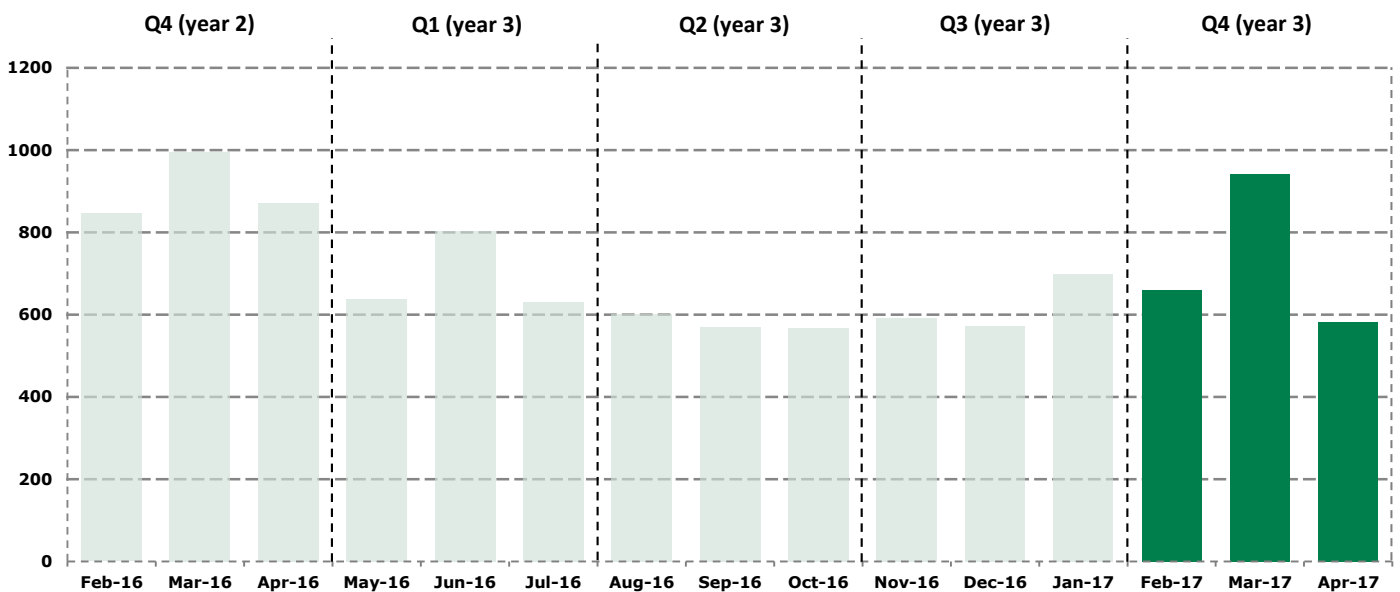
May 2017

Issue 12



The Domestic Renewable Heat Incentive (RHI) opened for applications on 9 April 2014 for customers across England, Scotland and Wales who install eligible renewable heating technologies in their homes. This report details scheme activity in Quarter 4 (year 3) of the Domestic RHI scheme, covering the period Feb 2017 to Apr 2017.

No. of accreditations



Quarterly accreditations

Q1 May 16 - Jul 16	2,071
Q2 Aug 16 - Oct 16	1,739
Q3 Nov 16 - Jan 17	1,863
Q4 Feb 17 - Apr 17	2,182

Accreditations made

659 Feb 17	941 Mar 17
582 Apr 17	2,182 Quarter Total

In total, we have

55,461

Accreditations, since the launch of the scheme

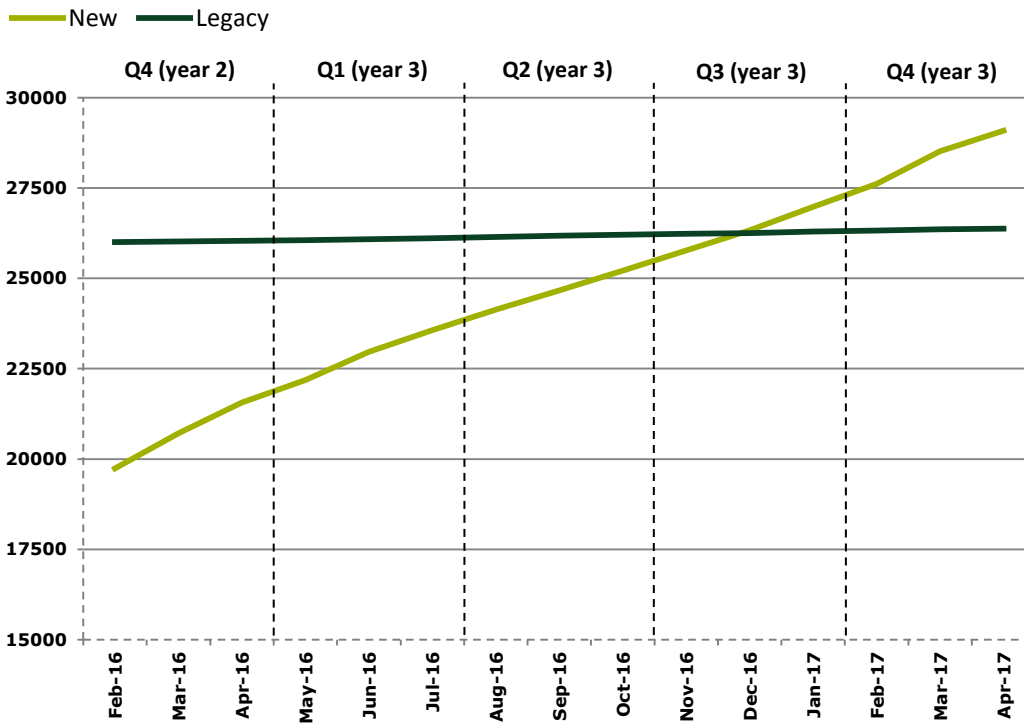
*As per the Domestic Renewable Heat Incentives regulations, our quarterly reports cover the following periods:

- Q1:** May to July
- Q2:** August to October
- Q3:** November to January
- Q4:** February to April

Legacy and new accreditations (cumulative)

Q4 (year 2)		Q1 (year 3)		Q2 (year 3)		Q3 (year 3)		Q4 (year 3)	
Legacy	New	Legacy	New	Legacy	New	Legacy	New	Legacy	New
59	2,653	69	2,002	94	1,645	93	1,770	79	2,103

Legacy accreditations are systems that were commissioned between 15 July 2009 when the RHI was first announced by DECC, and 9 April 2014 when the Domestic RHI scheme launched. New systems are those that were commissioned on or after 9 April 2014.



New accreditations for Q4 are 19% higher than Q3.

Legacy	
23	37
Feb-17	Mar-17
19	79
Apr-17	Quarter Total

New	
636	904
Feb-17	Mar-17
563	2,103
Apr-17	Quarter Total

In total, we have made

26,377

legacy accreditations since the launch of the scheme

In total, we have made

29,084

new accreditations since the launch of the scheme

Payments made to date by technology type

£101.3

million

Biomass

£47.9

million

Ground Source Heat Pump

£32.5

million

Air Source Heat Pump

£4.7

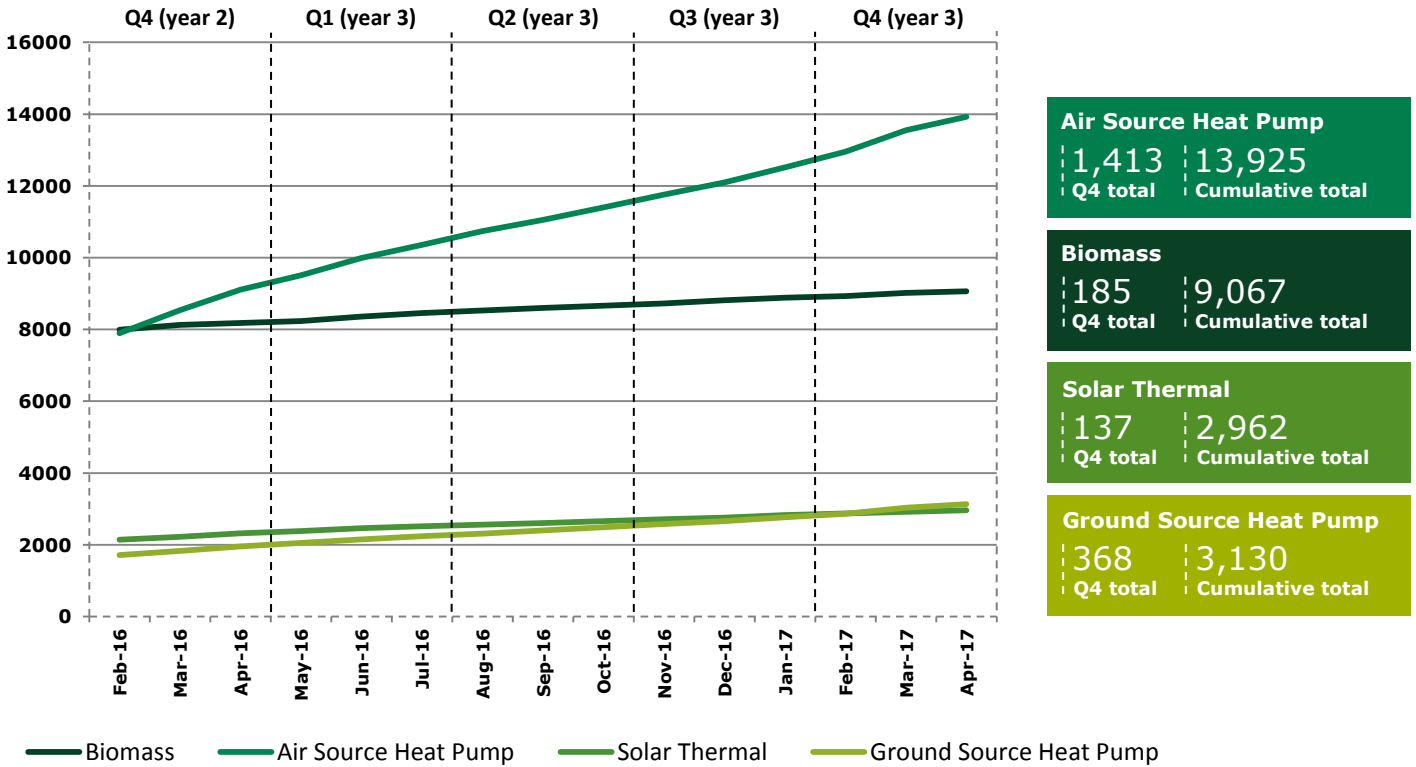
million

Solar Thermal

Accreditations by technology for new applications

The graph below shows the cumulative number of accreditations made per technology type for new systems only (systems commissioned on or after 9 April 2014). The total number of new accredited systems for air source heat pumps has continued to exceed those for biomass systems.

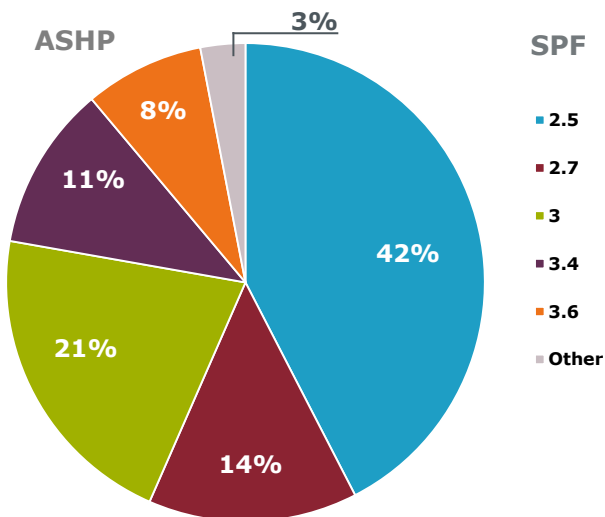
New Accreditations (cumulative)



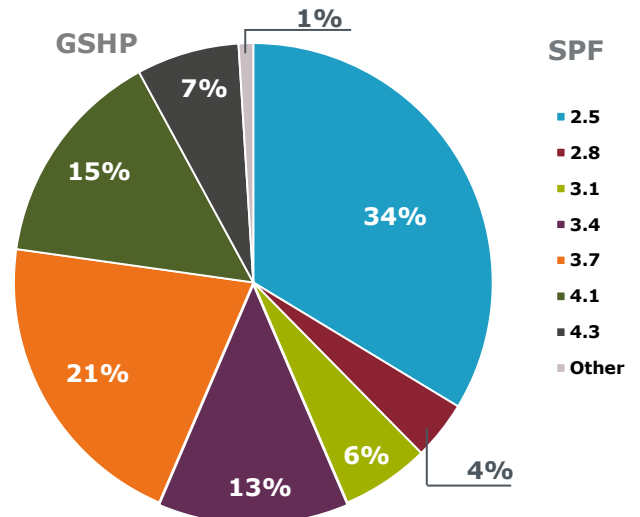
Seasonal Performance Factors (SPFs)

The SPF of a heat pump is a measure of how efficiently it is operating. The higher the SPF, the more energy efficient the system is. Only heat pumps with an SPF of 2.5 or higher can be eligible for Domestic RHI. All legacy systems were automatically assigned an SPF of 2.5, unless the applicant provided SPF calculations completed by the installer.

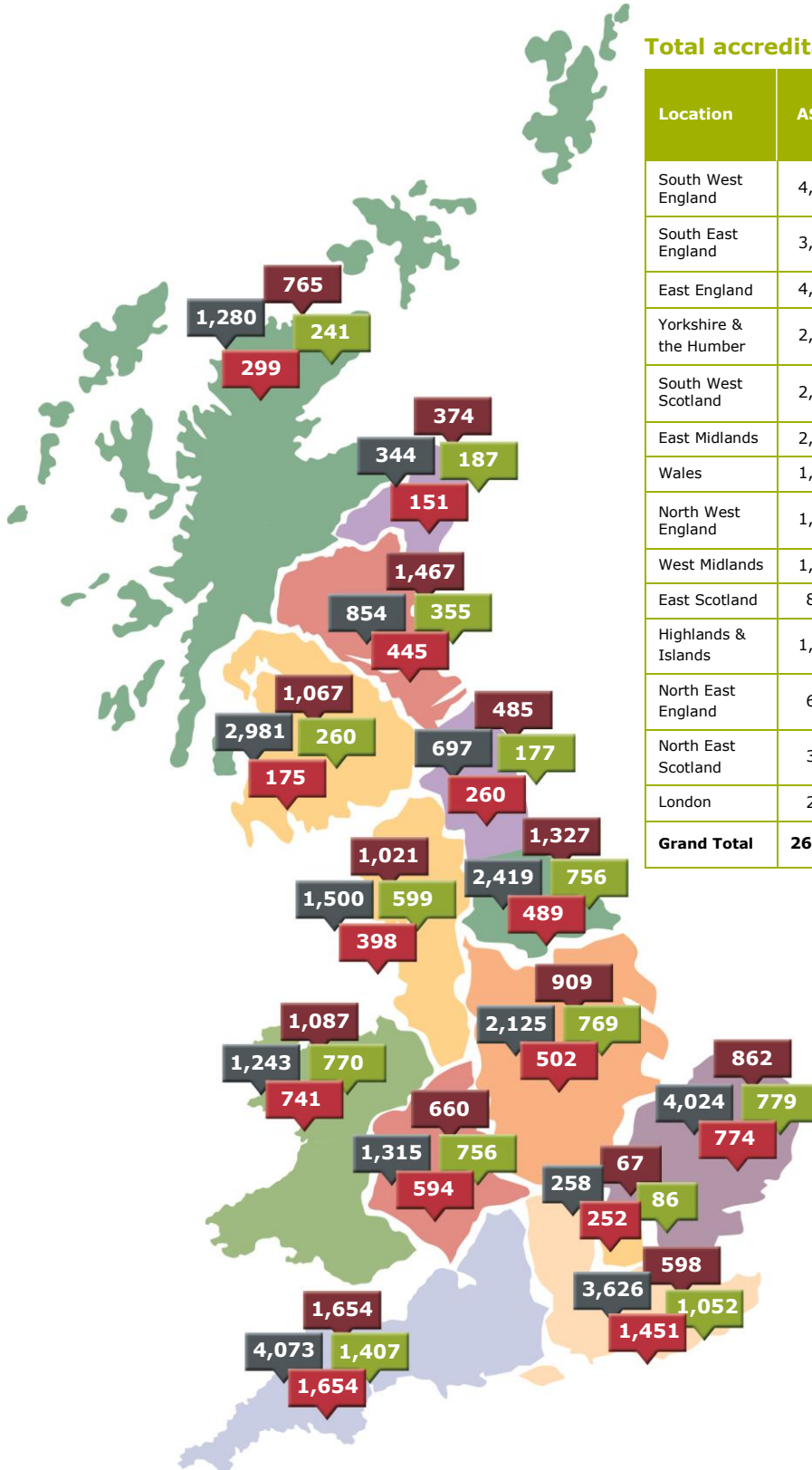
ASHP Seasonal performance factors (SPFs)



GSHP Seasonal performance factors (SPFs)

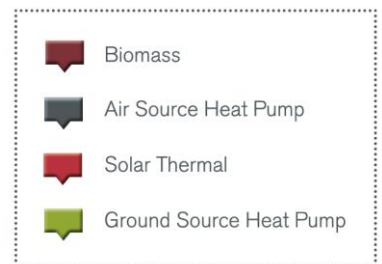


Regional distribution of accreditations



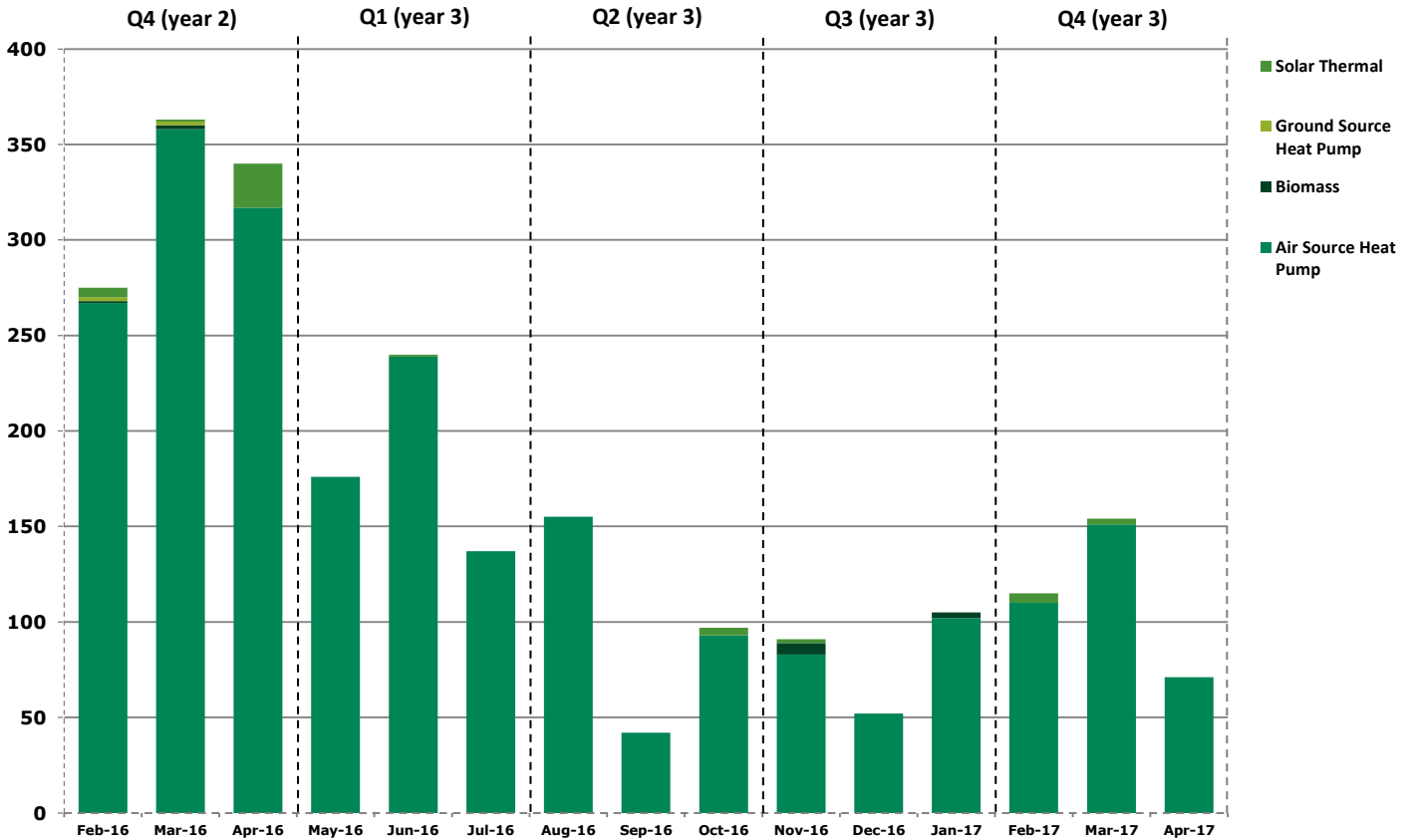
Total accreditations per region (up to Apr 2017)

Location	ASHP	Biomass	GSHP	Solar Thermal	Grand Total	% Increase from Q2
South West England	4,073	1,654	1,407	1,654	8,788	3.2
South East England	3,626	598	1,052	1,451	6,727	3.0
East England	4,024	862	779	774	6,439	5.1
Yorkshire & the Humber	2,419	1,327	756	489	4,991	5.1
South West Scotland	2,981	1,067	260	175	4,483	3.4
East Midlands	2,125	909	769	502	4,305	4.4
Wales	1,243	1,087	770	741	3,841	3.6
North West England	1,500	1,021	599	398	3,518	3.4
West Midlands	1,315	660	756	594	3,325	2.8
East Scotland	854	1,467	355	445	3,121	2.8
Highlands & Islands	1,280	765	241	299	2,585	1.8
North East England	697	485	177	260	1,619	0.9
North East Scotland	344	374	187	151	1,056	3.6
London	258	67	86	252	663	5.7
Grand Total	26,739	12,343	8,194	8,185	55,461	3.6

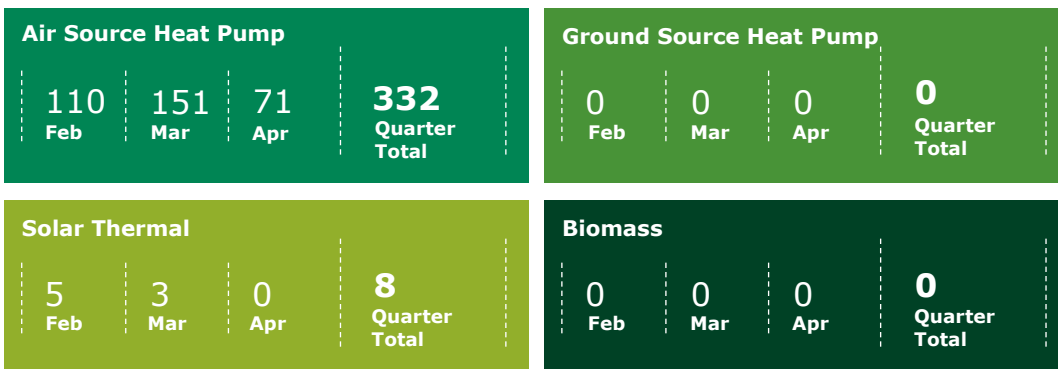


Registered Social Landlords (RSLs)

In addition to homeowners, Registered Social Landlords (RSLs) are also eligible to apply for the Domestic RHI. In total 12,890 accreditations have been made to RSLs, 52% (6,703) of which relate to legacy systems. Air Source Heat Pump continues to be the most common technology.



RSL accreditations (Q4)



We have made over
£10.05 million
 of payments to Registered
 Social Landlords to date.

Our
Administration

86.8%

of applications submitted
last quarter received a
decision within working 30
days

82.6% Overall satisfaction score for customer survey

We estimate that accredited systems will save over

4.8 MT of CO₂

OVER THE LIFETIME OF THE SCHEME

**Since scheme launch, accredited
systems have generated over:**

1,702,926.4 MWh

OF RENEWABLE HEAT



If you have any questions about the content of this report, please let us know by emailing
DRHIResolutions@ofgem.gov.uk

