

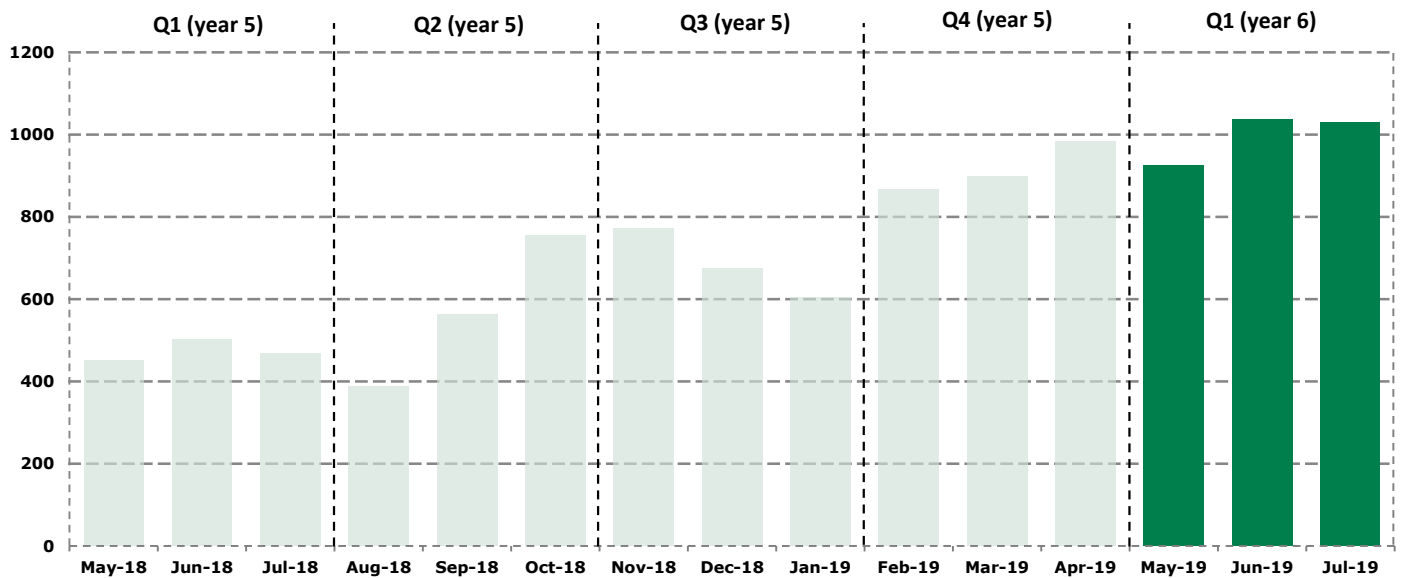
# Domestic Renewable Heat Incentive

[www.ofgem.gov.uk/drhi](http://www.ofgem.gov.uk/drhi)

## Quarterly Report Issue 21

The Domestic Renewable Heat Incentive (RHI) opened for applications on 9 April 2014 for customers across England, Scotland and Wales who install eligible renewable heating technologies in their homes. This report details scheme activity in Quarter 1 (year 6) of the Domestic RHI scheme, covering the period May 2019 to July 2019\*.

## Number of accreditations



Quarterly accreditations	
<b>Q2</b> Aug 18 – Oct 18	1,703
<b>Q3</b> Nov 18 – Jan 19	2,049
<b>Q4</b> Feb 19 – Apr 19	2,747
<b>Q1</b> May 19 – Jul 19	2,991

Number of systems accredited to the Scheme, by month of accreditation		
925 May-19	1,037 Jun-19	1,029 Jul-19
<b>Quarter Total 2,991</b>		

In total, there are  
**71,604**  
Systems accredited to the Scheme

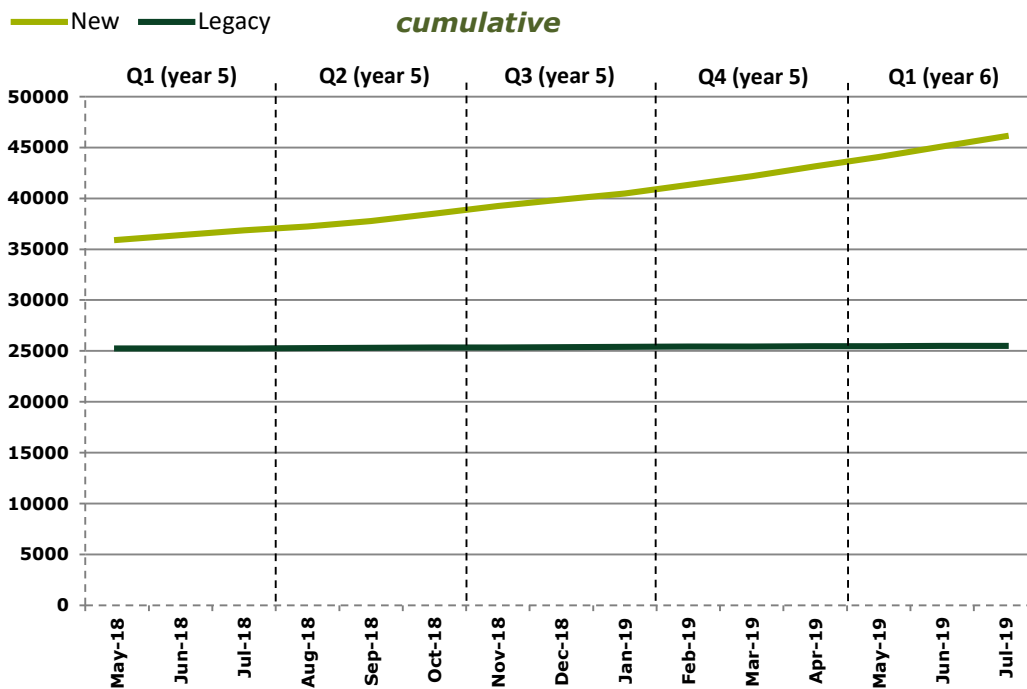
\*As per the Domestic Renewable Heat Incentive regulations, our quarterly reports cover the following periods:

- Q1:** May to July
- Q2:** August to October
- Q3:** November to January
- Q4:** February to April

## Legacy and new accreditations

Q1 (year 5)		Q2 (year 5)		Q3 (year 5)		Q4 (year 5)		Q1 (year 6)	
Legacy	New	Legacy	New	Legacy	New	Legacy	New	Legacy	New
36	1,383	69	1,634	66	1,983	62	2,685	44	2,947

Legacy accreditations are systems that were commissioned between 15 July 2009 when the RHI was first announced by DECC (now BEIS), and 9 April 2014 when the Domestic RHI scheme launched. New systems are those that were commissioned on or after 9 April 2014.



Legacy	
14	15
May-19	Jun-19
15	44
Jul-19	Quarter Total

New	
911	1,022
May-19	Jun-19
1,014	2,947
Jul-19	Quarter Total

In total, there are  
**25,501**  
 legacy systems accredited to the Scheme

In total, there are  
**46,103**  
 new systems accredited to the Scheme

## Payments made to date



**£211.7**

million

Biomass



**£122.6**

million

Ground Source Heat Pump



**£92.9**

million

Air Source Heat Pump



**£10.4**

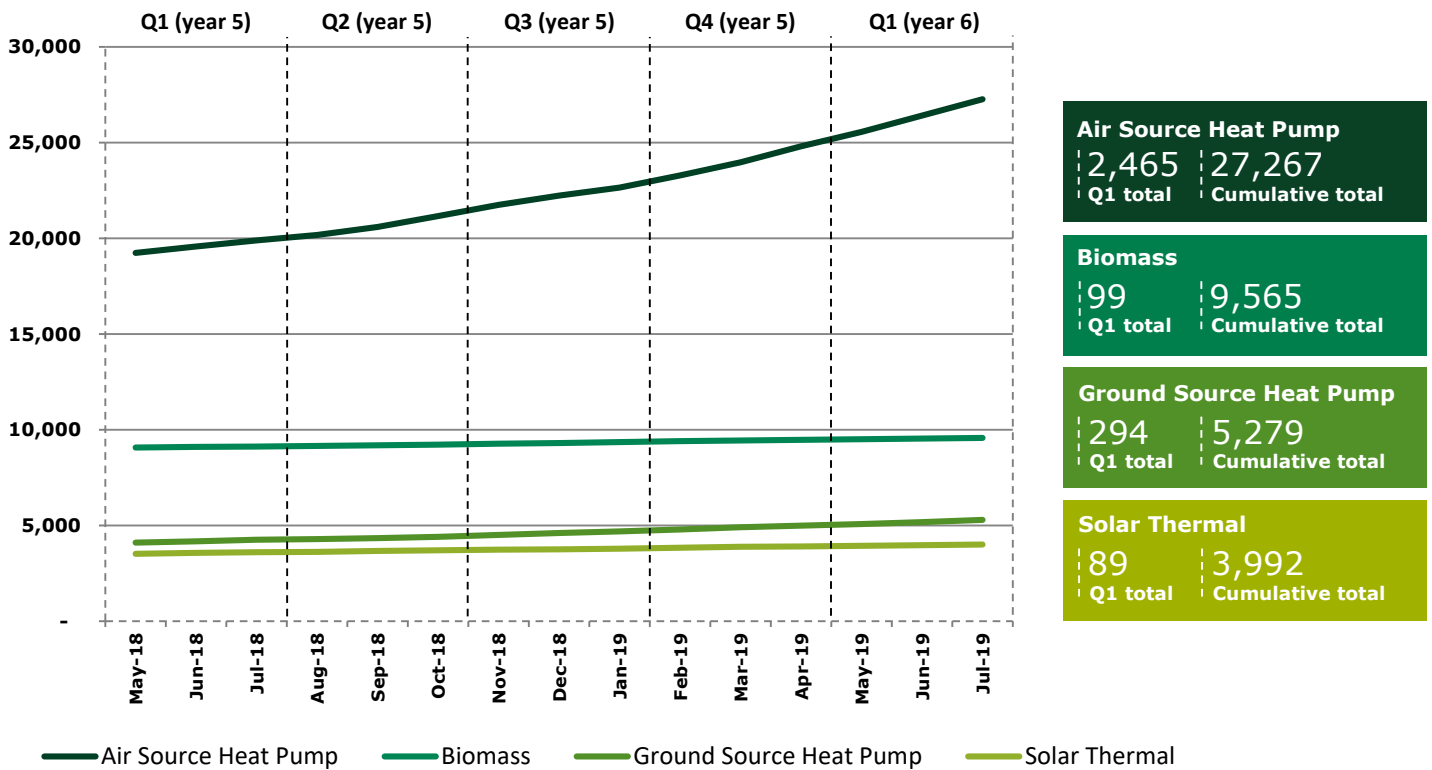
million

Solar Thermal

## Accreditations by technology for new applications

The graph below shows the cumulative number of accredited systems per technology type for new systems only (systems commissioned on or after 9 April 2014). The total number of new accredited systems for Ground Source Heat Pumps has continued to exceed those for Solar Thermal systems. The biggest increase this quarter has been in Air Source Heat Pumps.

### New Accreditations (cumulative)

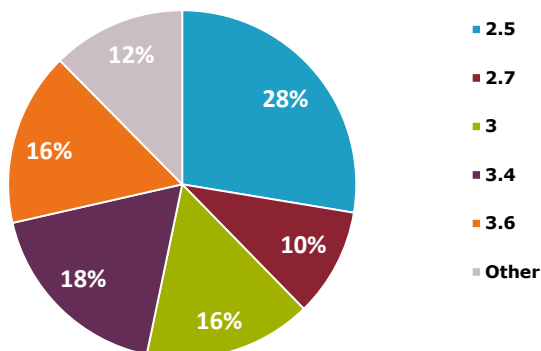


## Seasonal Performance Factors (SPFs)

The SPF of a heat pump is a measure of how efficiently it is operating. The higher the SPF, the more energy efficient the system is. Only heat pumps with SPFs of 2.5 or higher can be eligible for Domestic RHI. All legacy systems were automatically assigned an SPF of 2.5, unless the applicant provided SPF calculations completed by the installer.

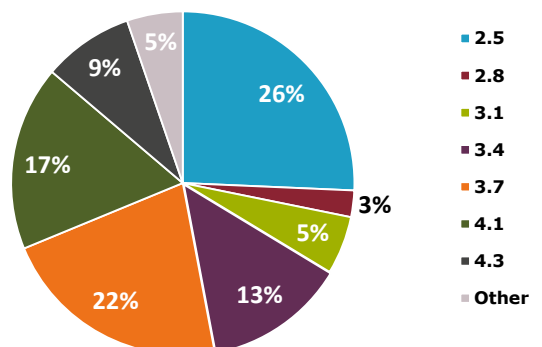
### ASHP Seasonal performance factors (SPFs)

ASHP



### GSHP Seasonal performance factors (SPFs)

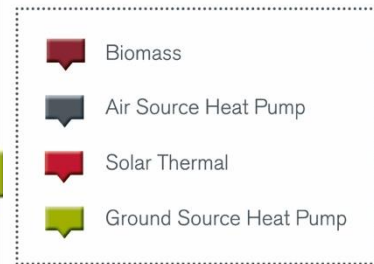
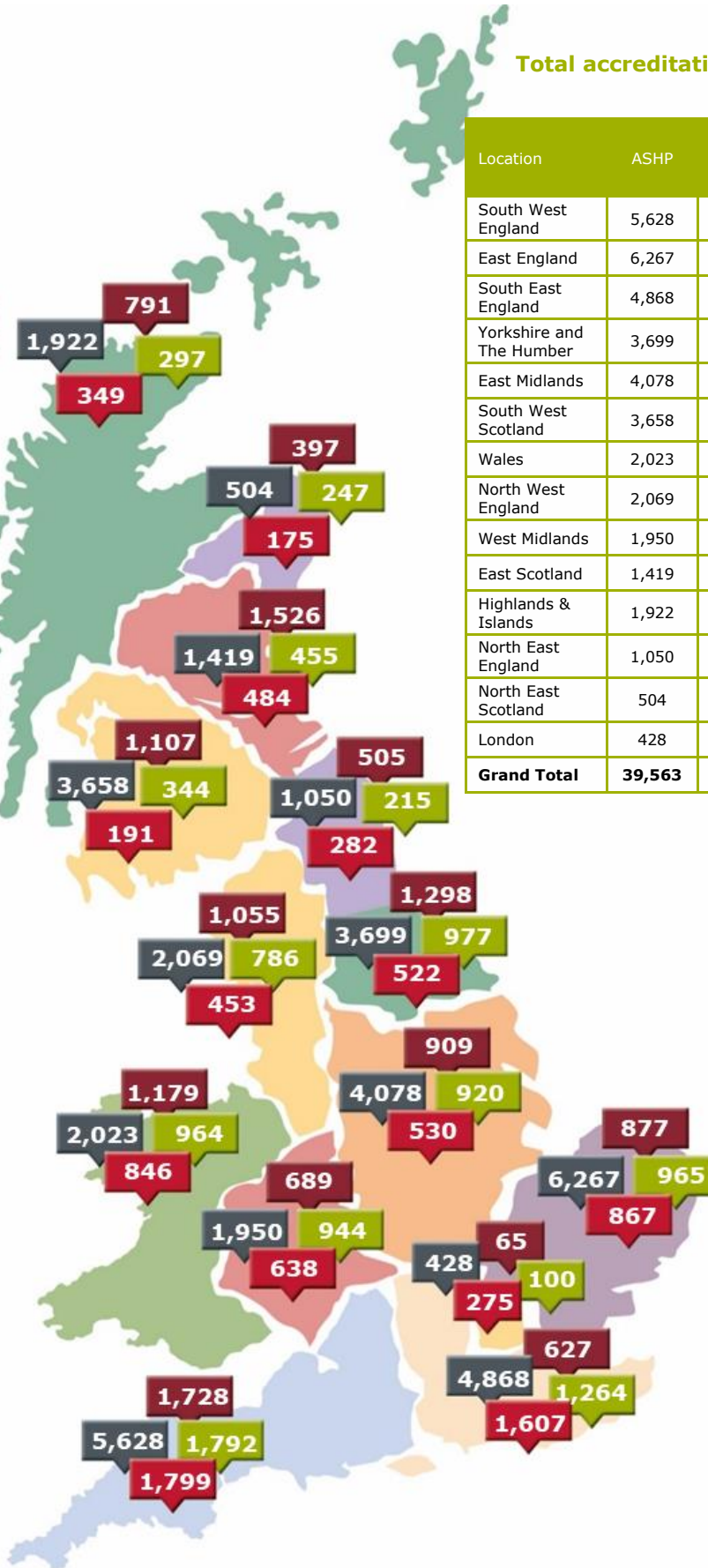
GSHP



## Regional distribution of accreditations

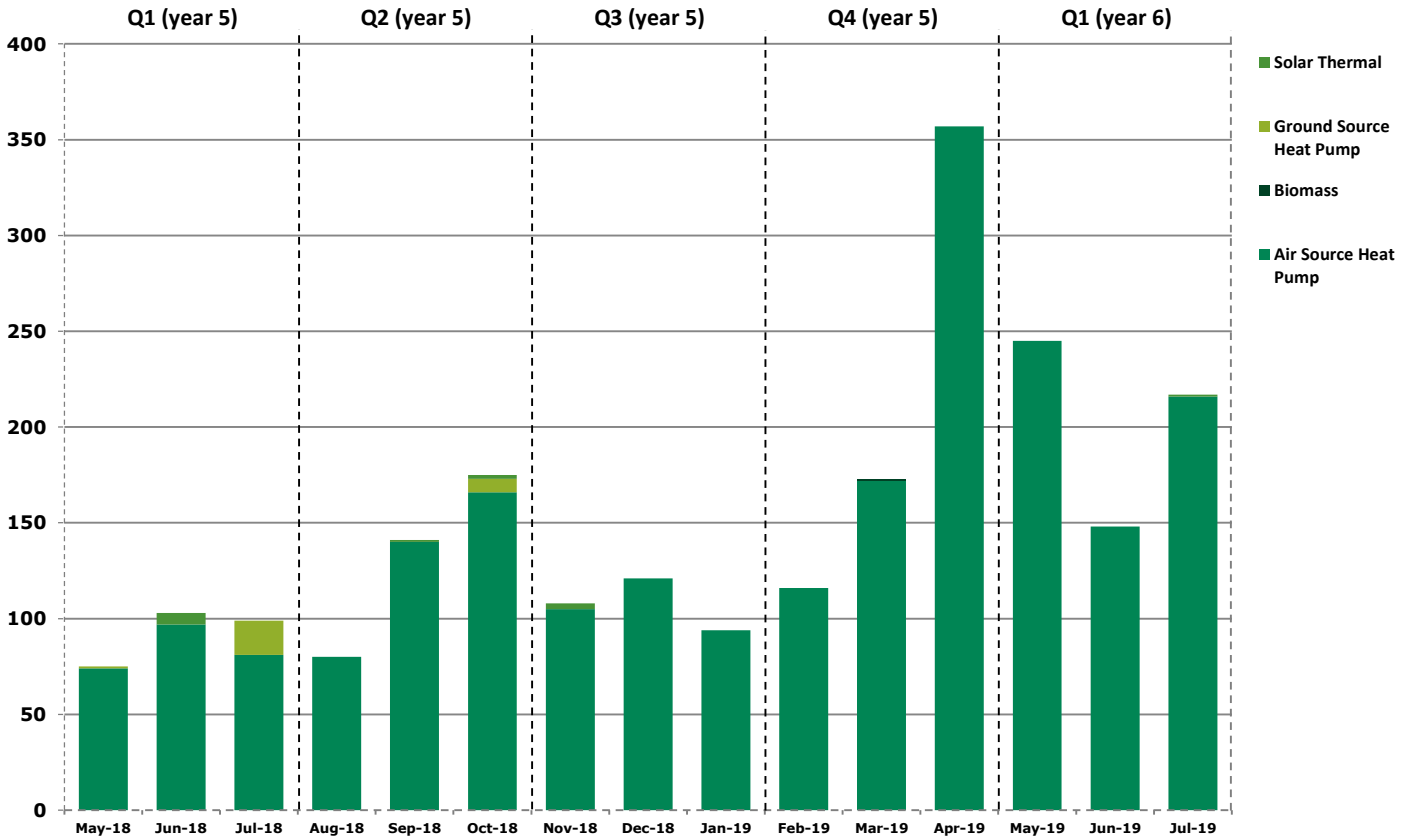
Total accreditations per region (up to 31 Jul 2019)

Location	ASHP	Biomass	GSHP	Solar Thermal	Grand Total	% Increase from Q4
South West England	5,628	1,728	1,792	1,799	10,947	3.6%
East England	6,267	877	965	867	8,976	6.4%
South East England	4,868	627	1,264	1,607	8,366	3.0%
Yorkshire and The Humber	3,699	1,298	977	522	6,496	4.2%
East Midlands	4,078	909	920	530	6,437	5.2%
South West Scotland	3,658	1,107	344	191	5,300	2.5%
Wales	2,023	1,179	964	846	5,012	3.9%
North West England	2,069	1,055	786	453	4,363	2.9%
West Midlands	1,950	689	944	638	4,221	3.7%
East Scotland	1,419	1,526	455	484	3,884	3.2%
Highlands & Islands	1,922	791	297	349	3,359	4.1%
North East England	1,050	505	215	282	2,052	4.1%
North East Scotland	504	397	247	175	1,323	3.5%
London	428	65	100	275	868	4.0%
<b>Grand Total</b>	<b>39,563</b>	<b>12,753</b>	<b>10,270</b>	<b>9,018</b>	<b>71,604</b>	<b>4.0%</b>

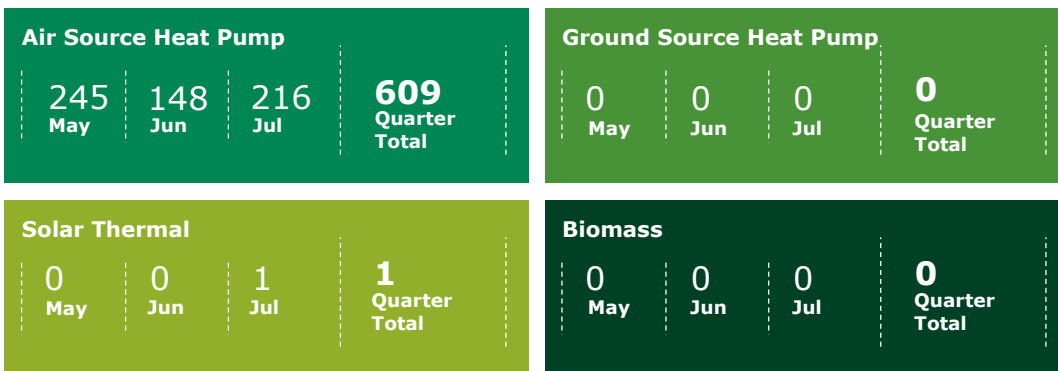


## Registered Social Landlords (RSLs)

In addition to homeowners, Registered Social Landlords (RSLs) are also eligible to apply for the Domestic RHI. In the last twelve months, 1,975 accreditations have been made to RSLs, 99.2% (1,960) of which are Air Source Heat Pumps.



### RSL accreditations (Q1)



We have made over  
**£26.5m**  
of payments to Registered  
Social Landlords to date.

Our  
Administration

**72.0%**

of applications submitted  
last quarter received a  
decision within 30 working  
days

**We estimate that accredited systems will save over**

**4.63 MT of CO<sub>2</sub>**

**OVER THE LIFETIME OF THE SCHEME**

**Since scheme launch, accredited  
systems have generated over:**

**3,892,856 MWh**

**OF RENEWABLE HEAT**



If you have any questions about the content of this report, please let us know by emailing  
[DRHIResolutions@ofgem.gov.uk](mailto:DRHIResolutions@ofgem.gov.uk)

