

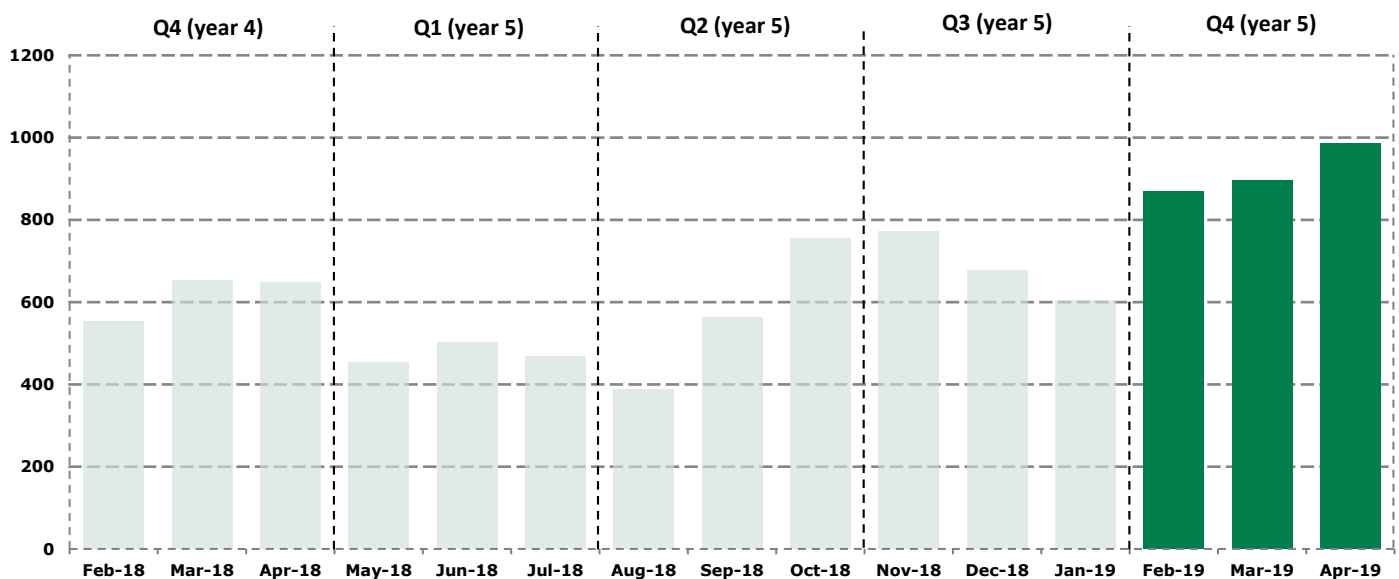
# Domestic Renewable Heat Incentive

[www.ofgem.gov.uk/drhi](http://www.ofgem.gov.uk/drhi)

## Quarterly Report Issue 20

The Domestic Renewable Heat Incentive (RHI) opened for applications on 9 April 2014 for customers across England, Scotland and Wales who install eligible renewable heating technologies in their homes. This report details scheme activity in Quarter 4 (year 5) of the Domestic RHI scheme, covering the period February 2019 to April 2019\*.

### Number of accreditations



**Quarterly accreditations**

**Q1**  
May 18 – Jul 18      **1,423**

---

**Q2**  
Aug 18 – Oct 18      **1,705**

---

**Q3**  
Nov 18 – Jan 19      **2,054**

---

**Q4**  
Feb 19 – Apr 19      **2,751**

Number of systems accredited to the Scheme, by month of accreditation

<b>868</b> Feb - 19	<b>986</b> Apr - 19	<b>897</b> Mar - 19
<b>Quarter Total 2,751</b>		

In total, there are

**68,862**

Systems accredited to the Scheme

\*As per the Domestic Renewable Heat Incentive regulations, our quarterly reports cover the following periods:

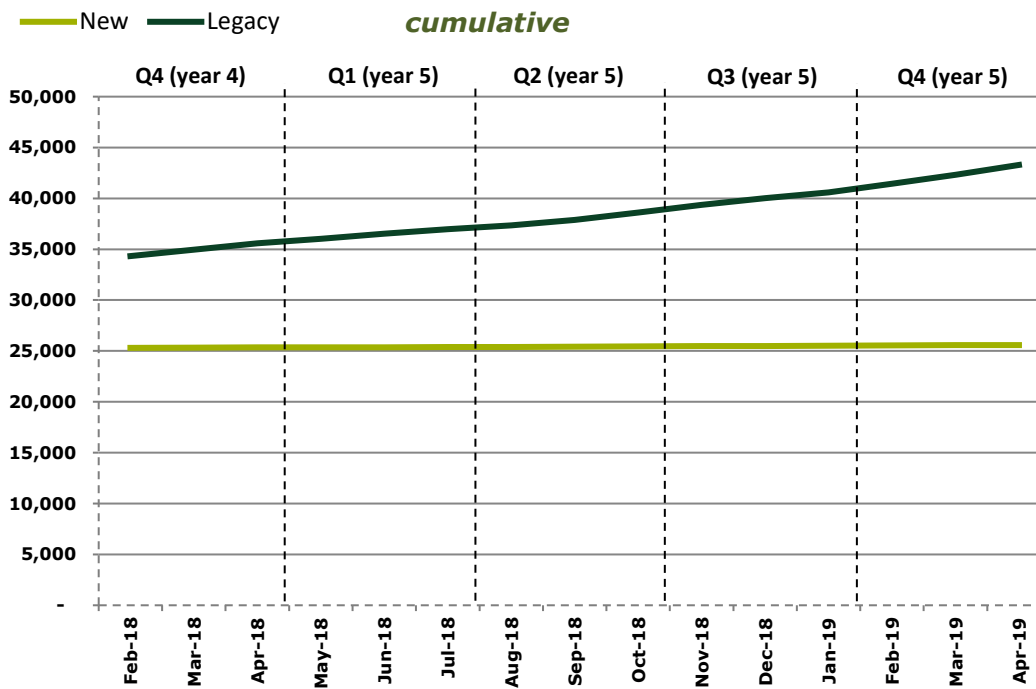
- Q1:** May to July
- Q2:** August to October
- Q3:** November to January
- Q4:** February to April

# Domestic Renewable Heat Incentive

## Legacy and new accreditations

Q4 (year 4)		Q1 (year 5)		Q2 (year 5)		Q3 (year 5)		Q4 (year 5)	
Legacy	New	Legacy	New	Legacy	New	Legacy	New	Legacy	New
60	1,791	36	1,387	70	1,635	66	1,988	62	2,689

Legacy accreditations are systems that were commissioned between 15 July 2009 when the RHI was first announced by DECC (now BEIS), and 9 April 2014 when the Domestic RHI scheme launched. New systems are those that were commissioned on or after 9 April 2014.



Legacy	
25	23
Feb-19	Mar-19
14	62
Apr-19	Quarter Total

New	
843	874
Feb-19	Mar-19
972	2,689
Apr-19	Quarter Total

In total, there are  
**25,576**  
 legacy systems accredited to the Scheme

In total, there are  
**43,286**  
 new systems accredited to the Scheme

## Payments made to date



**£199.8**

million

Biomass



**£112.8**

million

Ground Source Heat Pump



**£83.9**

million

Air Source Heat Pump



**£9.7**

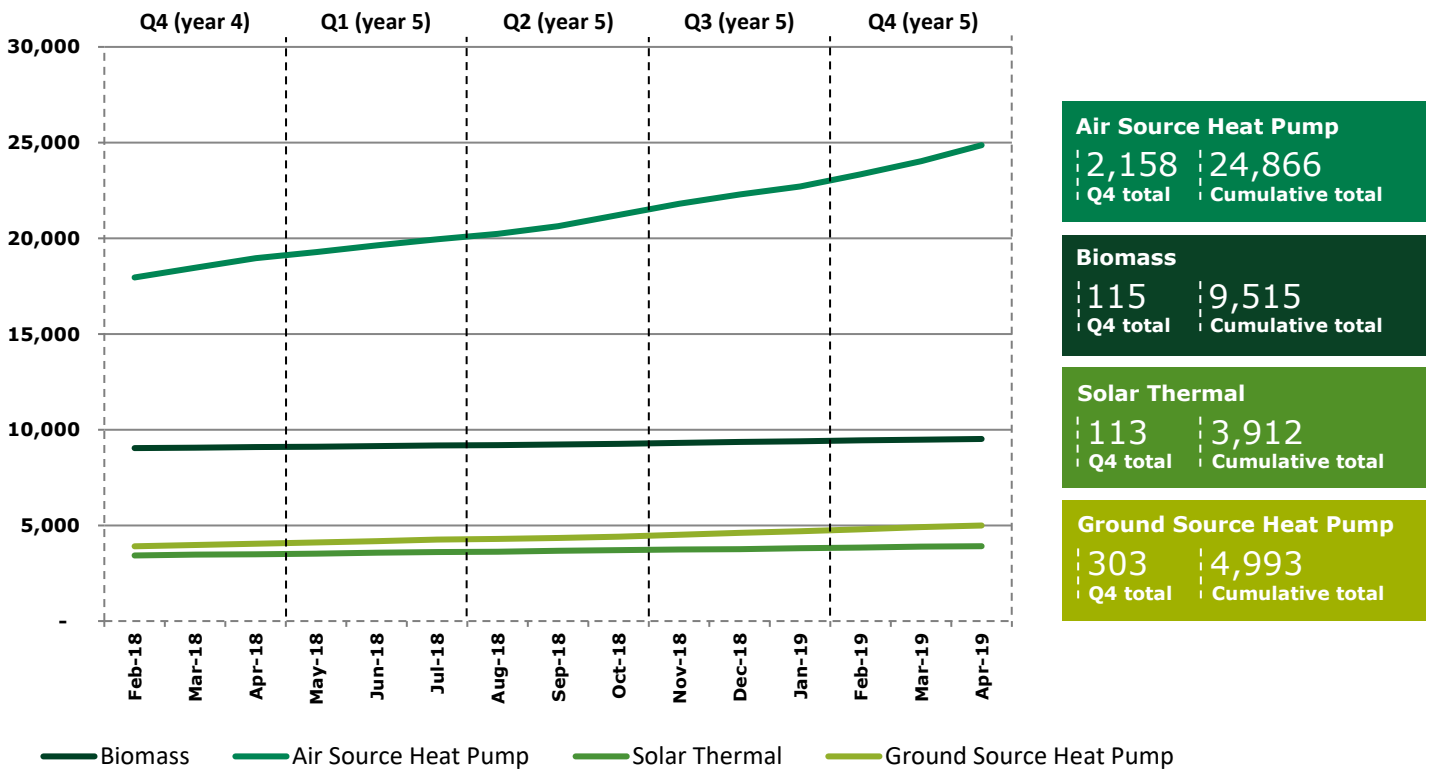
million

Solar Thermal

## Accreditations by technology for new applications

The graph below shows the cumulative number of accredited systems per technology type for new systems only (systems commissioned on or after 9 April 2014). The total number of new accredited systems for Ground Source Heat Pumps has continued to exceed those for Solar Thermal systems. The biggest increase this quarter has been in Air Source Heat Pumps.

### New Accreditations (cumulative)

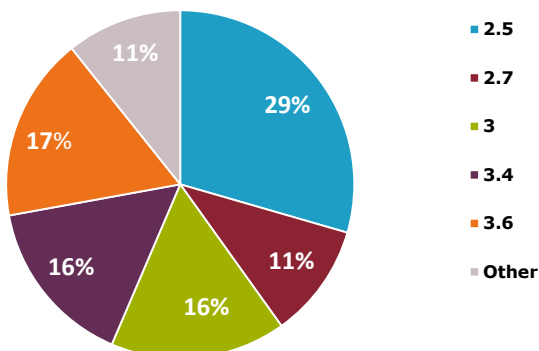


## Seasonal Performance Factors (SPFs)

The SPF of a heat pump is a measure of how efficiently it is operating. The higher the SPF, the more energy efficient the system is. Only heat pumps with SPFs of 2.5 or higher can be eligible for Domestic RHI. All legacy systems were automatically assigned an SPF of 2.5, unless the applicant provided SPF calculations completed by the installer.

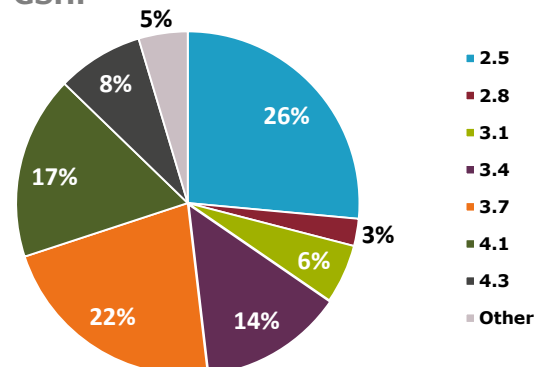
### ASHP Seasonal performance factors (SPFs)

ASHP



### GSHP Seasonal performance factors (SPFs)

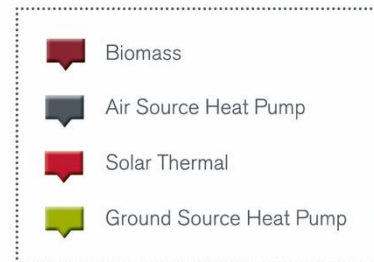
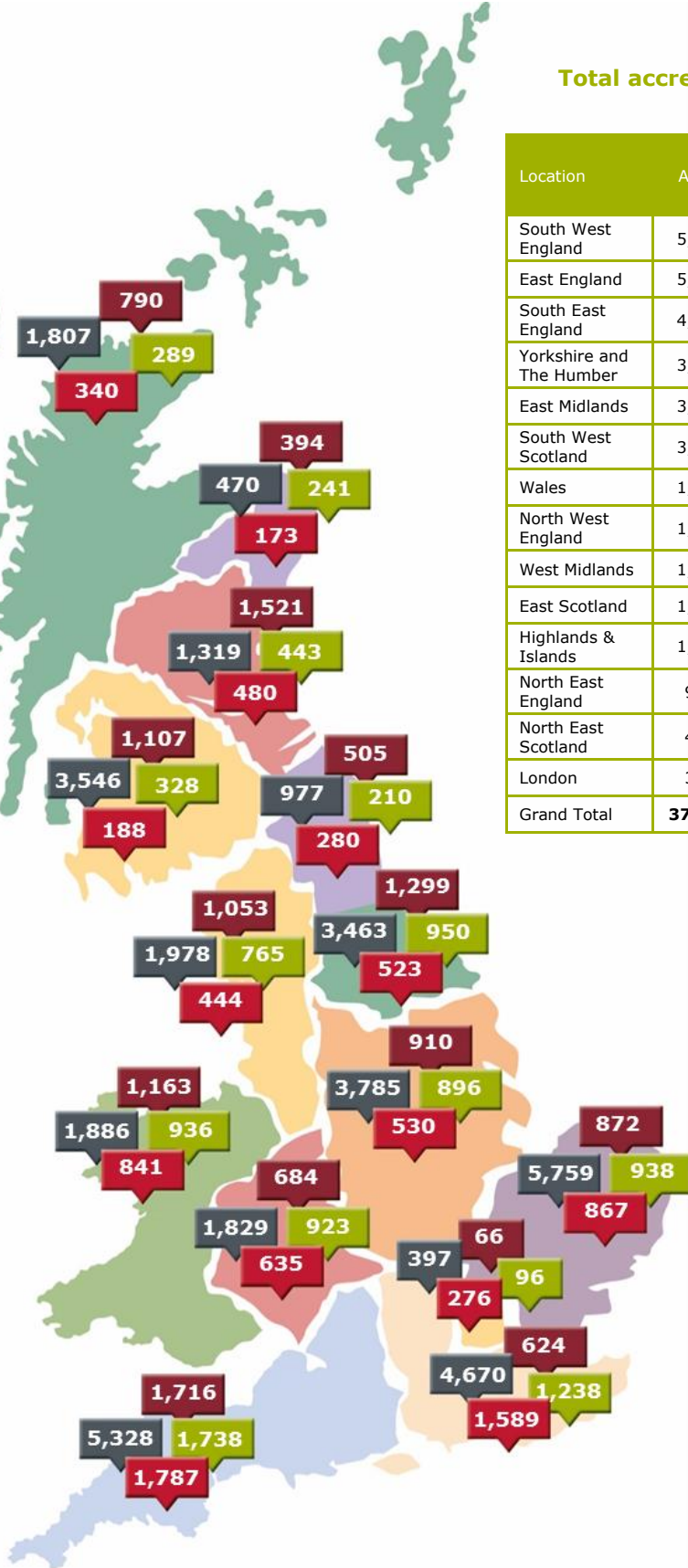
GSHP



## Regional distribution of accreditations

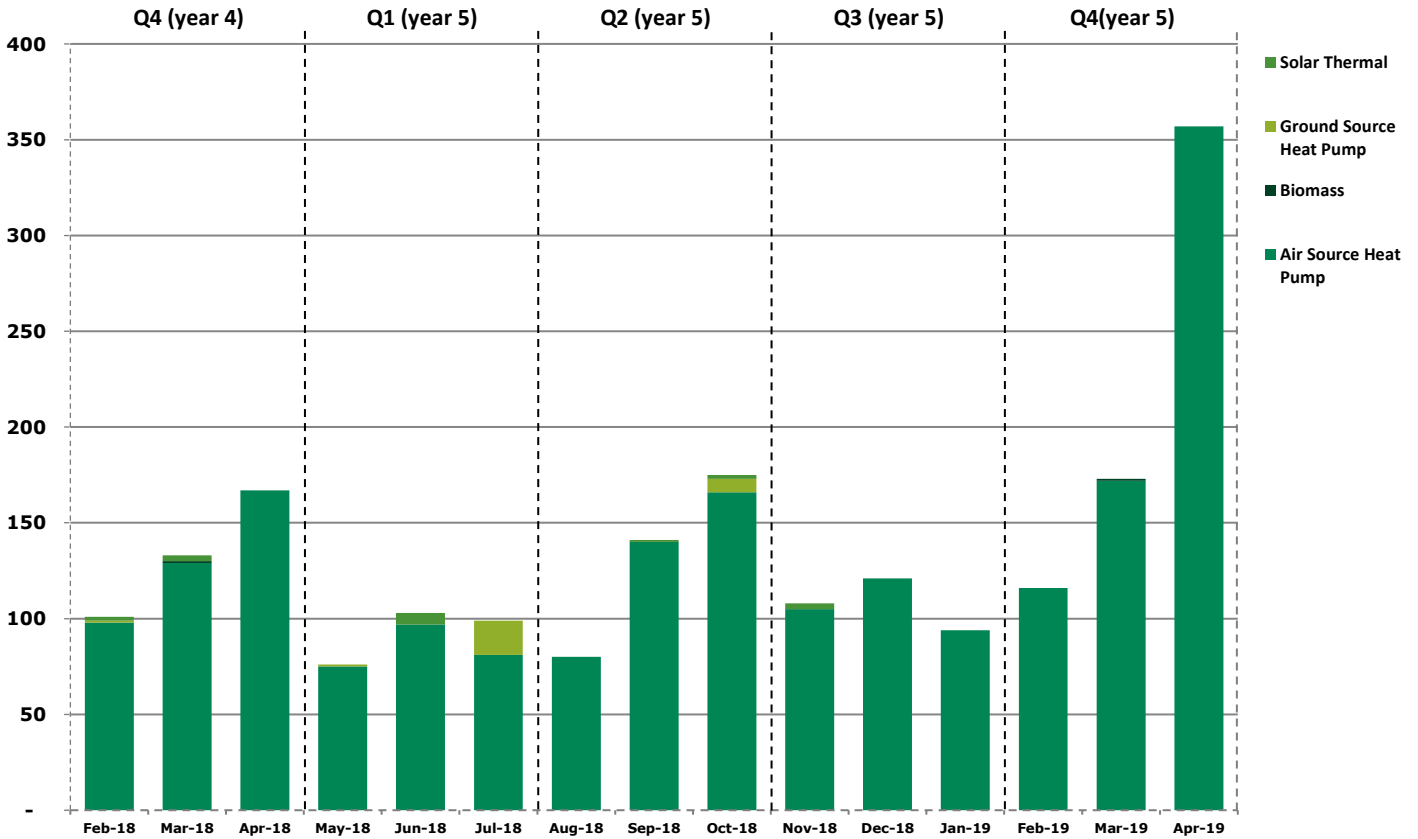
Total accreditations per region (up to Apr 2019)

Location	ASHP	Biomass	GSHP	Solar Thermal	Grand Total	% Increase from Q3
South West England	5,328	1,716	1,738	1,787	<b>10,569</b>	<b>2.9%</b>
East England	5,759	872	938	867	<b>8,436</b>	<b>5.8%</b>
South East England	4,670	624	1,238	1,589	<b>8,121</b>	<b>3.5%</b>
Yorkshire and The Humber	3,463	1,299	950	523	<b>6,235</b>	<b>3.1%</b>
East Midlands	3,785	910	896	530	<b>6,121</b>	<b>6.1%</b>
South West Scotland	3,546	1,107	328	188	<b>5,169</b>	<b>2.1%</b>
Wales	1,886	1,163	936	841	<b>4,826</b>	<b>3.5%</b>
North West England	1,978	1,053	765	444	<b>4,240</b>	<b>3.4%</b>
West Midlands	1,829	684	923	635	<b>4,071</b>	<b>3.0%</b>
East Scotland	1,319	1,521	443	480	<b>3,763</b>	<b>2.1%</b>
Highlands & Islands	1,807	790	289	340	<b>3,226</b>	<b>4.2%</b>
North East England	977	505	210	280	<b>1,972</b>	<b>2.8%</b>
North East Scotland	470	394	241	173	<b>1,278</b>	<b>3.1%</b>
London	397	66	96	276	<b>835</b>	<b>3.6%</b>
<b>Grand Total</b>	<b>37,214</b>	<b>12,704</b>	<b>9,991</b>	<b>8,953</b>	<b>68,862</b>	<b>3.7%</b>

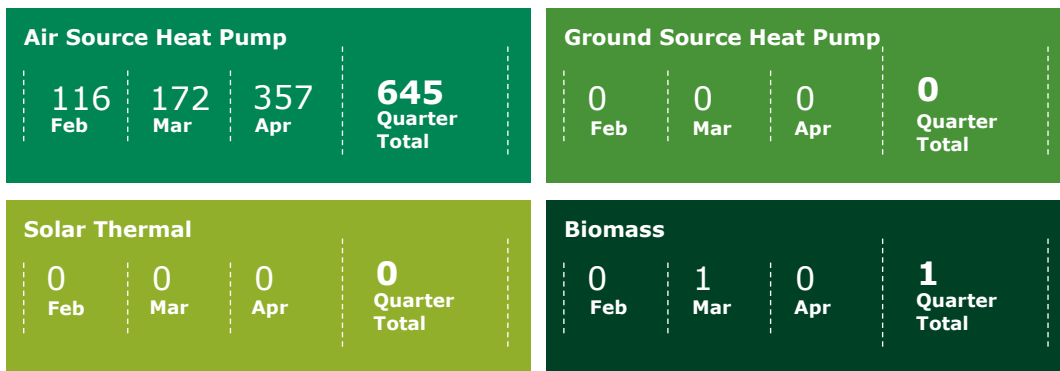


## Registered Social Landlords (RSLs)

In addition to homeowners, Registered Social Landlords (RSLs) are also eligible to apply for the Domestic RHI. In the last twelve months, 1,643 accreditations have been made to RSLs, 97.6% (1,604) of which are Air Source Heat Pumps.



### RSL accreditations (Q4)



We have made over  
**£24.1m**  
of payments to Registered  
Social Landlords to date.

Our  
Administration

**67.9%**

of applications submitted  
last quarter received a  
decision within working 30  
days

**77.6%** Overall satisfaction score for customer survey

**We estimate that accredited systems will save over**

**4.47 MT of CO<sub>2</sub>**

**OVER THE LIFETIME OF THE SCHEME**

**Since scheme launch, accredited  
systems have generated over:**

**3,630,283 MWh**

**OF RENEWABLE HEAT**



If you have any questions about the content of this report, please let us know by emailing  
[DRHIResolutions@ofgem.gov.uk](mailto:DRHIResolutions@ofgem.gov.uk)

