

Switching Programme: Data Working Group 05



1. **Welcome and Introductions** – Andrew Amato, Ofgem
2. **Actions Review** – Andrew Amato, Ofgem
3. **Introduction to the Systems Integrator** – Tony Walters, Netcompany
4. **Progress Report** – Andrew Amato, Ofgem
5. **Data Risk Review** – Andrew Amato, Ofgem
6. **Draft Data Management Principles** – Andrew Amato & John Wiggins
7. **Introduction to Data Assurance** – Colin Bezant, PwC
8. **LDM & Data Mapping** - Andrew Amato & John Wiggins
9. **DWG Forward Look** – Andrew Amato, Ofgem
10. **Any other business**
11. **Date of next meeting:** Thursday 25 April, 10.30am at Gemserv

2. Actions Review



Action ID	Area	Description	Owner	Status
DWG04-A01	Related MPAN Changes - Cutover Plans	FSEG are to agree and communicate the approach which should include clarification of cutover plans and market participants' responsibilities.	FSEG	Open - To be agreed at FSEG 02/04
DWG04-A02	Related MPAN Risks	Ofgem will add new MPAN risks to the register, one on system and one on process.	Andrew Amato	Complete – see agenda item 5
DWG04-A03	D0312 Flow Changes - Contracted Agents	Supplier attendees to engage with their contracted agents to ensure that they are aware of the change and the role they need to play as it proceeds.	Suppliers (Ongoing)	Ongoing
DWG04-A04	Industry Engagement – Cleansing	AA to discuss with Gemserv how to effectively ensure parties collaborate including actions for those parties not accessing reporting.	Andrew Amato	Open – Reporting /analysis of report access to be undertaken and approach agreed.
DWG04-A05	Generation/ Derivation of RELs	Program coordinator and Ofgem data lead to discuss potential with address provider and develop an assurance approach to monitoring the generation / derivation of RELs and feedback to Data Working Group in April.	Andrew Amato	Open – awaiting appointment of address service provider
DWG04-A06	Circulation of Plans	Ofgem to circulate links to E2E Data Migration Plan , CSS Data Migration Plan and E2E Transition Plan (In Flight Switches Management Approach) .	Andrew Amato	Closed
DWG04-A07	Risk Register	Ofgem will review, consolidate, and update the risk register based on the DWG discussion.	Andrew Amato	Complete – see agenda item 5

3. Introduction to the Systems Integrator



Locations and employees

Netcompany is the fastest growing and most successful IT service company in Northern Europe.

Founded in 2000 in Denmark

IPO 7th June 2018

Listed on Nasdaq Copenhagen Exchange

+20 % AVERAGE REVENUE GROWTH FOR +10 YEARS

Today we lead the way with digitisation in Northern Europe, building modern IT solutions and introducing advanced use of technology for large global customer, side by side in agile teams.

8
Offices

5
Countries

+2000
Employees



Domain expertise across industries

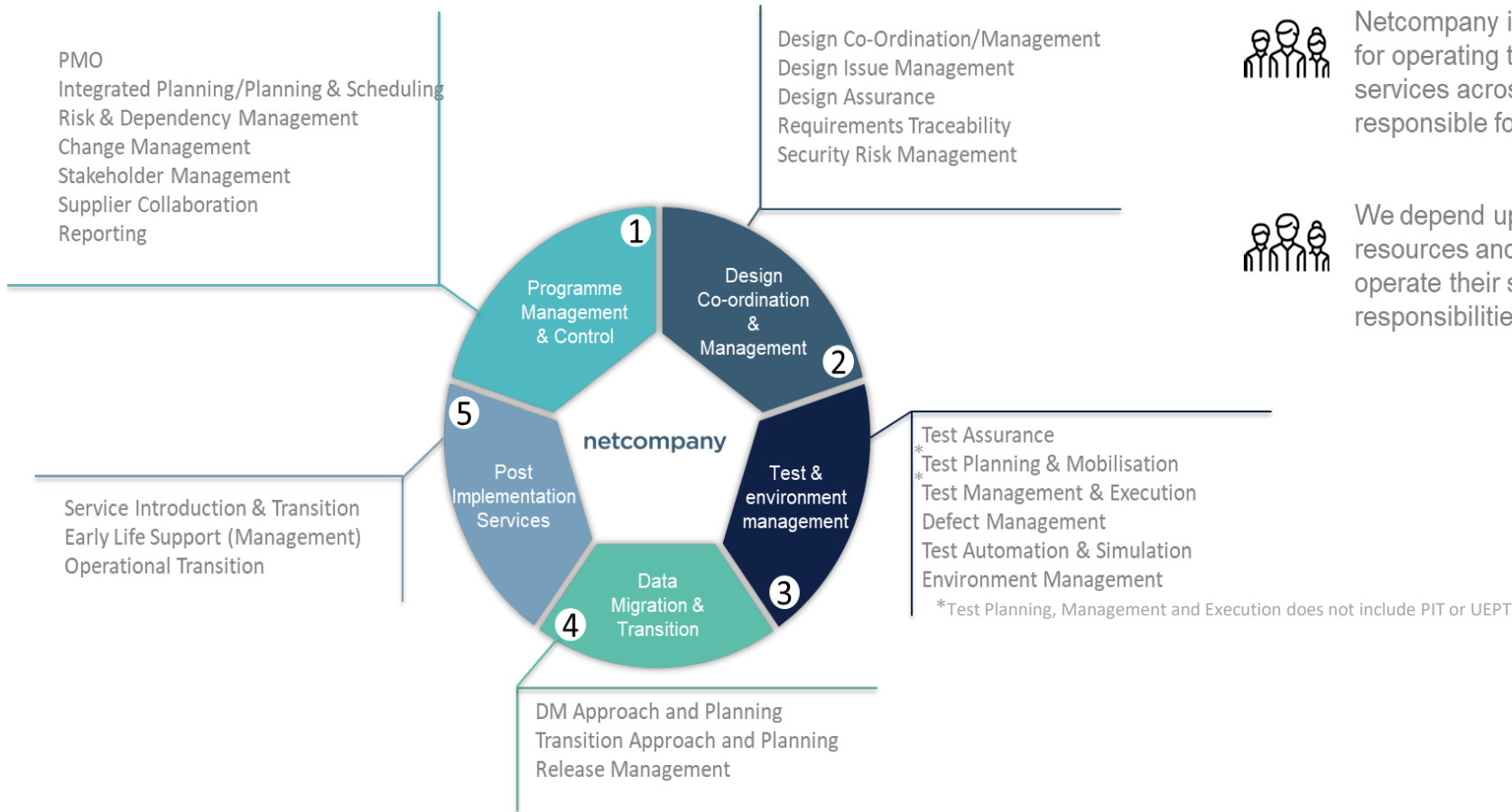
- Established System Integration approach
- Technology driven operating methodology
- Scalable multi-party integration delivery
- Proven, refined & repeatable processes

Specialties

- Programme and Project Management
- Cloud and Technical Delivery
- Legacy Application Modernisation
- Digital Development
- Enterprise Business Solutions
- Digital and Technical Advisory



Our Services



Netcompany is responsible for operating the outlined services across the parties responsible for delivery.



We depend upon resources and parties to operate their specific responsibilities.

*Test Planning, Management and Execution does not include PIT or UEPT

**Executive
Partner
Sponsor**
Ross
Mcconachie

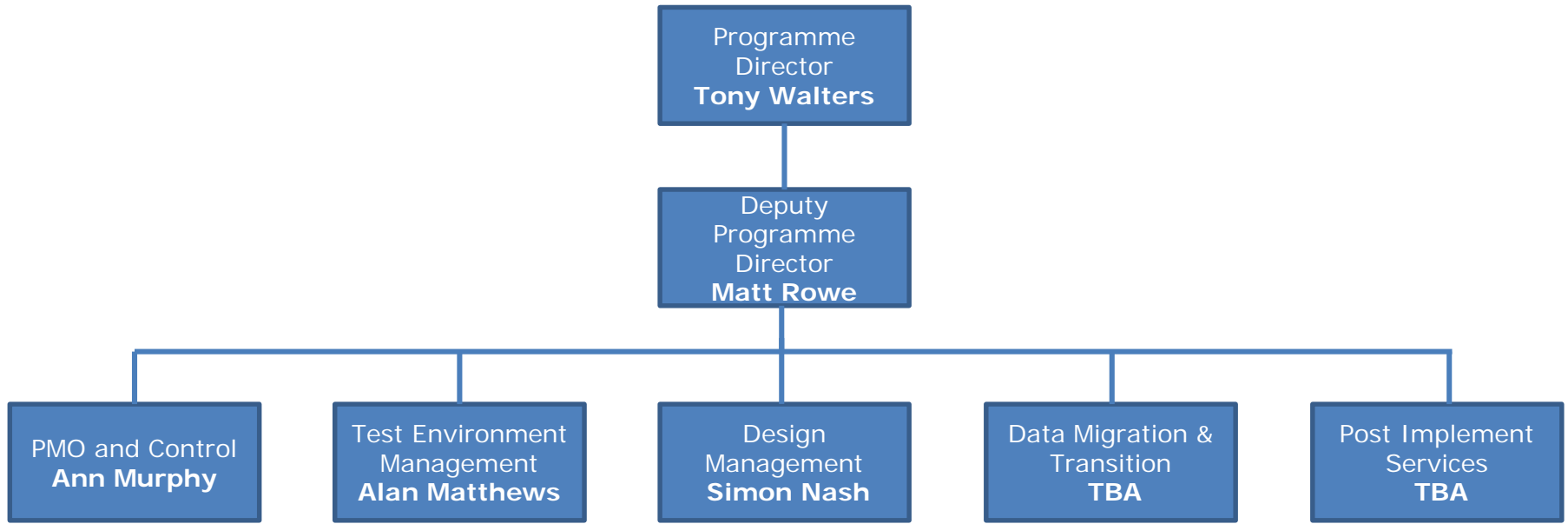
Significant experience with DCC, responsible for leading System Integration of SMIP.
Executive leadership to organisations.
Expert in Digital Transformation.
Leading authority in creation of organisations with high agility.

**Programme
Director**
Tony
Walters

Significant experience of large scale complex programmes.
Cross-organisational experience and global integration programmes.
Expert in Digital Transformation.
Supportive style of leadership.

**Deputy
Programme
Director**
Matt Rowe

Significant experience of large scale complex programme.
Extensive experience across Digital Transformation leading multi-supplier environments.
Expert in Digital Transformation programmes.
Supportive style of leadership.



Mar 19

- Internal Kick Off
- 3rd Party Introductions
- Programme Dependency Verification Phase
- Process Agreement
- Governance Alignment
- Work Shop Preparation
- Schedule Workshops
- DCC Co-Location

Apr 19

- Programme Kick Off Event
- Workshops

May 19

- Full agreement on both
- CSSIA & CSSIP
- Workshops Continue

Jun 19

- Uplift End 2 End documentation
- Existing Systems External
- Interface Designs (Non-CSS)

July 19

- CSS Physical
- Interface Designs

Note: 27th Feb - Start of Engagement

4. Progress Report



5. Data Risk Review



- Following the last DWG, a data risk register has been developed which consolidates existing data risks, including those from the Data Landscape Review with those raised by industry at the last meeting.
- Data risks have been categorised into 7 themes: -
 - Industry Engagement & Planning
 - Existing System Changes & Transitions
 - CSS Transition & Migration
 - Data Quality & Cleansing
 - Address Matching & REL Creation
 - Design (Logical & Physical)
 - GDPR & Security
- Risk themes are scored based on severity, likelihood and proximity.
- Propose reporting on themes each month, calling out specific risks or issues for discussion with a quarterly deep dive on register.
- DWG members can raise risks or issues at any time to be discussed / included

- Scoring Matrix for Risk Register

Risk Register

Risk Rating Categorisation:

SEVERITY	LIKELIHOOD				
	1- Rare Highly Improbable that it will occur during the lifetime of the project	2 - Unlikely Not probable that it will occur during the lifetime of the project	3 - Possible As likely as it is unlikely that the event will occur	4- Likely Probable that it will occur during the lifetime of the project	5 - Almost Certain High expectation that it will occur during the lifetime of the project
5 - Significant	Medium	High	High	Very High	Very High
4 - Major	Medium	Medium	High	High	Very High
3 - Moderate	Low	Low	Medium	High	High
2 - Minor	Very Low	Low	Low	Medium	Medium
1 - Insignificant	Very Low	Very Low	Low	Low	Low

- Scoring Approach for Risk Themes - note proximity weightings

Risk Themes

Average Weighted Risk Calculation:

Severity	Severity Weighting	Likelihood	Likelihood Weighting	Proximity	Proximity Weighting	AVG Weighted Risk Rating
5	3	5	5	Imminent (less than 1 month)	1	X Severity Weighting X Likelihood X Proximity Weighting X AVG (Severity Weighting)
4	2	4	3	Short Term (1-3 months)	1	
3	1	3	1	Medium Term (4-6 months)	0.5	
2	1	2	1	Long Term (7 months or more)	0.3	
1	1	1	1			

Risk Theme Average Weighted Risk	Risk Theme RAG rating
Over 30	Very High
Over 20	High
Over 10	Medium
Over 5	Low
Under 5	Very Low
0 or all risks closed	All Closed

Risk Theme	Theme Description	Theme Rating	Risk Trend	Summary Progress Update
<u>Industry Engagement & Planning</u>	Risks in relation to industry engagement with data related activity including cleansing as well as clarity/achievability on planning	Medium	↔	<ul style="list-style-type: none"> * Data Working Group stood up early in advance of DBT phase with good representation from across industry. * Progress reporting in development for DWG which will be shared with Implementation Group. * Ofgem / Programme Coordinator to work with ESPs to identify and address industry parties where greater engagement / activity is required. * Industry and Ofgem planning is progressing, with further detail to come when DBT plan is baselined in May.
<u>Existing System Changes & Transitions</u>	Risks in relation to implementation of changes to existing systems (MPAS/ECOES/UK LINK) ahead of transition stage 1. Includes creation of new data items/indicators and data migration.	Medium	↔	<ul style="list-style-type: none"> * Work ongoing across existing industry systems to progress Stage 0 changes. * Major MPRS release scheduled for June - system changes on track for delivery but some uncertainty on cutover process for related MPAN change. * Concerns over BSC SVG approval of BSC 1515 change proposal - currently engaging with Elaxon to explore potential actions to support change process. * MAP ID field to be included in UK Link in July with transfer to Xoserve of mastery of Supplier/Shipper mapping on track for February 20.
<u>CSS Transition & Migration</u>	Risks in relation to data migration and transition activity to CSS. This includes management of in-flight switches, delta loads and any temporary interfaces.	Very Low	↔	<ul style="list-style-type: none"> * Data Assurance Framework in development which will seek to address many risks in this theme. * Risks to be reviewed further with completion of physical design. * SI mobilisation in progress ahead of further development of data migration/transition approach and plans.
<u>Data Quality & Cleansing</u>	Risks in relation to cleansing of industry data ahead of transition stage 1 and all aspects of data quality.	Low	↔	<ul style="list-style-type: none"> * Data Working Group to commence monitoring of progress on data cleansing activity, with escalation to Implementation Group as necessary. * Electricity MAP ID data quality issues identified ahead of ECOES-MPAS migration, cleansing approach developed by C&C and awaiting approval by FSEG. * LDM Spreadsheet with existing industry data mapping developed and to be shared at March DWG with further cleanse prioritisation to follow.
<u>Address Matching & REL Creation</u>	Risks in relation to the address matching and REL creation and update process. Includes rules, formats, standards and address testing.	Low	↔	<ul style="list-style-type: none"> * Plot to Postal address cleansing in progress across both electricity and gas systems. * Profiling of addresses in UK Link completed to identify address quality issues with shipper portfolio reporting to commence to assist cleanse. Similar activity to be required in electricity. * Early engagement with Address Service provider planned to support address match/REL creation approach.
<u>Design (Logical & Physical)</u>	Risks in relation to data impacts of design both logical and physical. Includes management of change, adaptability, interface design as well as capability.	Medium	↔	<ul style="list-style-type: none"> * Change Requests to update Logical Data Model (ABACUS) are in progress which will address issues previously identified. * Data Management Principles developed and in review to provide clarity on design approach, roles & responsibilities, cleansing and quality.
<u>GDPR & Security</u>	Risks in relation to industry data in the context of GDPR and broader information security.	Very Low	↔	<ul style="list-style-type: none"> * Programme Privacy Impact Assessment (PIA) & Information Risk Assessment (IRA) currently in review with recommendations to follow. * Programme Security Advisory Group being stood up. * Testing working group to be stood up during May - plan close working in relation to test data.

NB –Risk Trend is level as is first report and no previous baseline

Risk ID	Risk Theme	Risk Description (Including potential consequences)	Risk Proximity	Controls in Place	Severity	Severity Score	Likelihood	Likelihood Score	Risk Score	Summary Progress Update for Period	Risk Owner	Date Risk was raised
NR16	Existing System Changes & Transitions	There is a risk that consequential change BSC CP1515 which supports the ECOES/MPRS migration is not approved. This could potentially delay the DTC change or mean that MOPs procedures may be out of step with system changes.	Imminent (less than 1 month)	* MRA guidance note produced for MOPs detailing the new changes.	Major	4	Possible	3	12	1) Ofgem engagement with Elexon to consider options to support approval by SVG on 2 April.	FSEG/Elexon	12/03/2019
NR02	Existing System Changes & Transitions	Related MPAN Migration - There is a risk that the related MPAN migration may be delayed due to system change delays or insufficient progress on cleansing activity	Short Term (1-3 months)	* Gemserv & SCS PM of migration project	Major	4	Possible	3	12	1) DWG to track progress on system changes and data cleansing with FSEG to progress further remedial actions as necessary - ongoing 2) Gemserv & SCS to agree and publish GONG approach/criteria at FSEG. March 2019	FSEG	21/02/2019
NR11	Design (Logical & Physical)	Logical Data Model - There is a risk that the LDM does not fully support the data requirements of all sites or ESP functions. This could result in the incorrect specification of the physical design and interfaces leading to change and delay.	Short Term (1-3 months)	* DWG / FSEG and industry reviews of LDM	Major	4	Possible	3	12	1) Final review of LDM mapping to complete in March 2) Change requests in progress to update LDM following industry feedback - April 2019	Andrew Amato	21/02/2019
NR04	Address Matching & REL Creation	Address Matching - There is a risk that REL creation is delayed and quality compromised by uncertainty over address standards, format and rules.	Medium Term (4-6 months)	* Planned Data Assurance activity to be undertaken	Major	4	Possible	3	12	1) Ofgem to engage with Address Service Provider once appointed to provide clarity to DWG on addressing approach - April 2019 2) Specific Data Assurance Deep Dive planned (in Data Assurance Framework) over Address Matching (ahead of industry testing)	Andrew Amato	21/02/2019
NR05	Industry Engagement & Planning	Industry Engagement - There is a risk of a lack of engagement from some industry parties in data cleanse activity. This could result in insufficient progress causing delay to subsequent programme activity.	Medium Term (4-6 months)	* Early formation of DWG to drive engagement * Programme Coordinator Industry Coordination function	Major	4	Possible	3	12	1) Gemserv & Xoserve to identify parties not engaging in cleanse activity and agree appropriate response with Ofgem - Ongoing 2) Licensed Party Assurance provider will review progress on data quality and data remediation activities	Andrew Amato	21/02/2019

NB – Risk IDs are likely to change for next report as risks are incorporated into the programme risk register

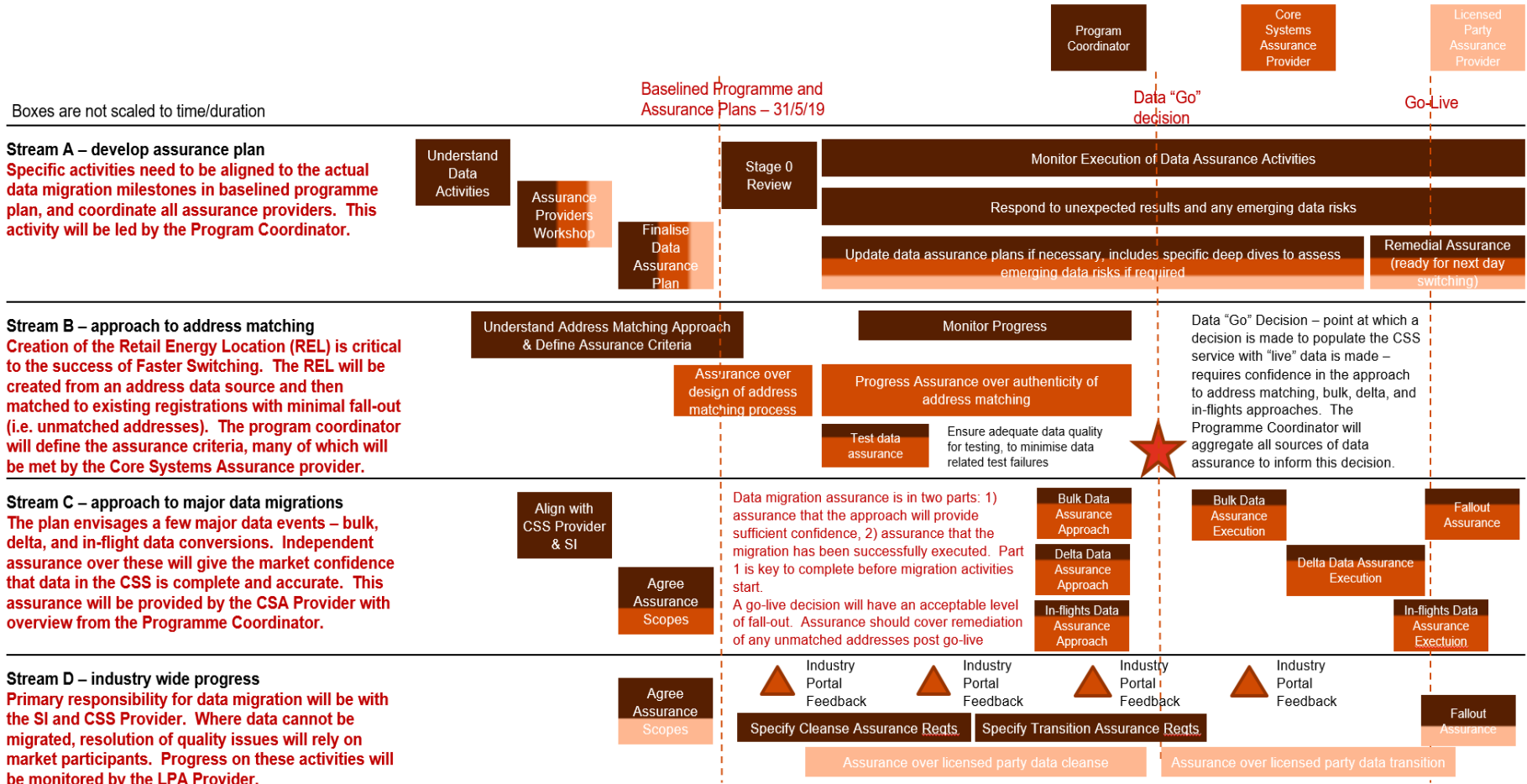
6. Draft Data Management Principles



- Draft Data Management Principles have been developed to provide clarity on E2E data approach and will be used help drive realisation of programme objectives from data perspective.
- Will be incorporated into the impact assessment approach to inform decisions in the programme Change Management process.
- Anticipate will be included in REC v1.0 for DBT phase and amended version included in the REC v2.0 Data Management Schedule.
- Following discussion and feedback at DWG anticipate presenting to Design Authority during April for baselining.

7. Introduction to Data Assurance





Where the assurance is provided by the CSA or LPA providers, the programme coordinator will be responsible for (1) ensuring that the scope, approach, and proposed skills to be deployed will address the programme wide assurance requirements, (2) review the results of the data assurance provided and draw their own conclusions to the level of risk to the overall programme, and (3) if required, determine additional assurance procedures which are required to reach the desired level of confidence over data progress.

8. LDM & Data Mapping



- Data mapping of Logical Data Model (LDM) to existing industry data completed.
- Undertaken with support from Xoserve and FSEG
- Mapping of the 'data at rest' within the LDM to 'data in motion' within the DTC and UKLink Manual – so not a direct like for like comparison – to aid industry understanding of the logical data.
- The logical data model should not be used for physical design – this will be done within the next phase of the programme once the Physical Design is available.
- High level data cleanse and migration requirements also identified.

- **Column A-B:** Name and definition for each data element from the Abacus LDM
- **Column C-G:** Mapping to existing data items; new CSS data elements that do not map to existing data or E2E data items not within scope of CSS are also referenced.
- **Column H:** High level categorisation of data element
- **Column I-J:** Data Master for each data element
- **Column L:** Additional notes to aid industry comprehension of logical data element and specific data cleanse / migration requirements.
- **Column M-O:** Migration and data cleanse categorisations, note: 'Y' indicates that analysis should be undertaken to understand what (if any) cleansing requirements exist for the data.

9. DWG Forward Look



April

- Standing Items
 - Data risks
 - Progress reporting
- Introduction to the CSS provider
- Introduction/approach to data migration and data testing

May

- Standing Items
 - Data risks
 - Progress reporting
- Approach to physical design
- Approach to REL creation & address testing
- Consultation on REC Data Management Schedule & Technical Specification Approach

June

- Standing Items
 - Data risks
 - Progress reporting
- Baselined DBT Plan
- Data Assurance Plan
- Electricity Stage 0 readiness

10. AOB

Date of next meeting: Thursday 25 April, 10.30am at Gemserv



Our core purpose is to ensure that all consumers can get good value and service from the energy market. In support of this we favour market solutions where practical, incentive regulation for monopolies and an approach that seeks to enable innovation and beneficial change whilst protecting consumers.

We will ensure that Ofgem will operate as an efficient organisation, driven by skilled and empowered staff, that will act quickly, predictably and effectively in the consumer interest, based on independent and transparent insight into consumers' experiences and the operation of energy systems and markets.