

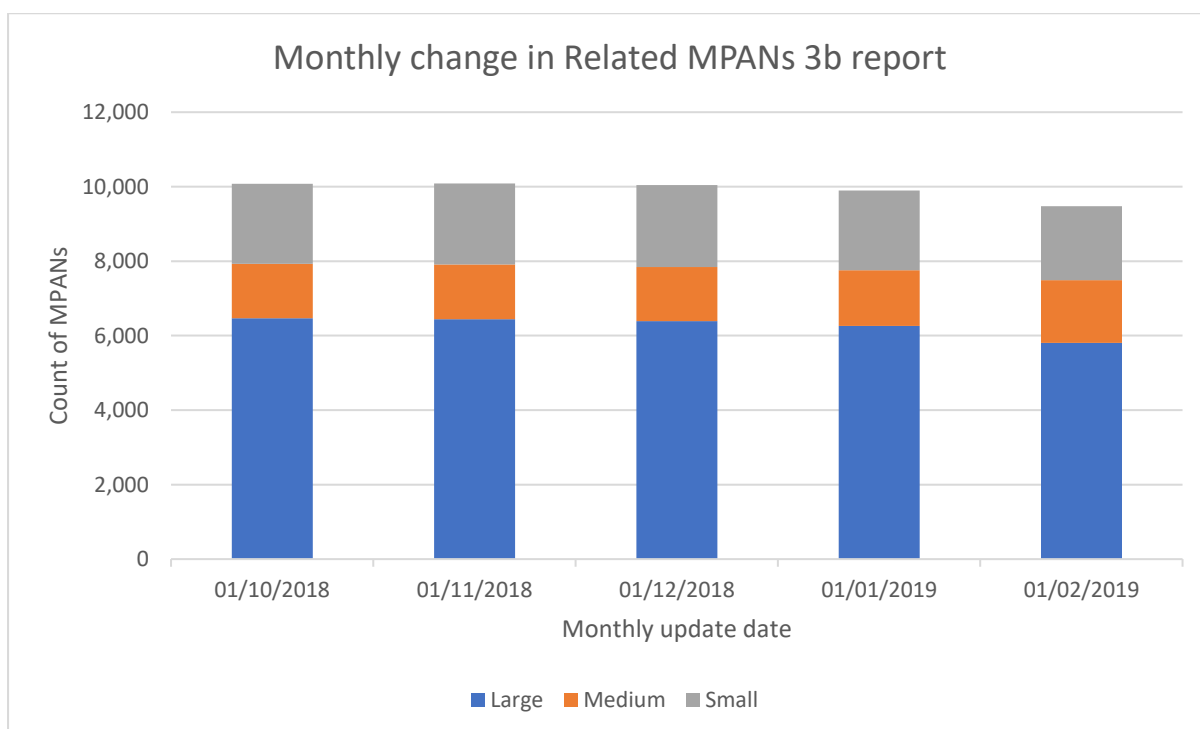


Related MPANs

Reporting is from Electricity Central Online Enquiry Service (ECOES) and accurate as at February 2019.

REPORT 3B

Report 3b contains instances of Related MPANs with more than one related MTC MPAN at an address that is split between Suppliers.



The graph shows the monthly change in Related MPANs 3b report.

Supplier Size	01/10/2018	01/11/2018	01/12/2018	01/01/2019	01/02/2019
Large	6,470	6,445	6,392	6,263	5,806
Medium	1,463	1,463	1,455	1,498	1,685
Small	2,141	2,177	2,193	2,137	1,982
Grand Total	10,074	10,085	10,040	9,898	9,473

The table shows the monthly change in Related MPANs 3b report.

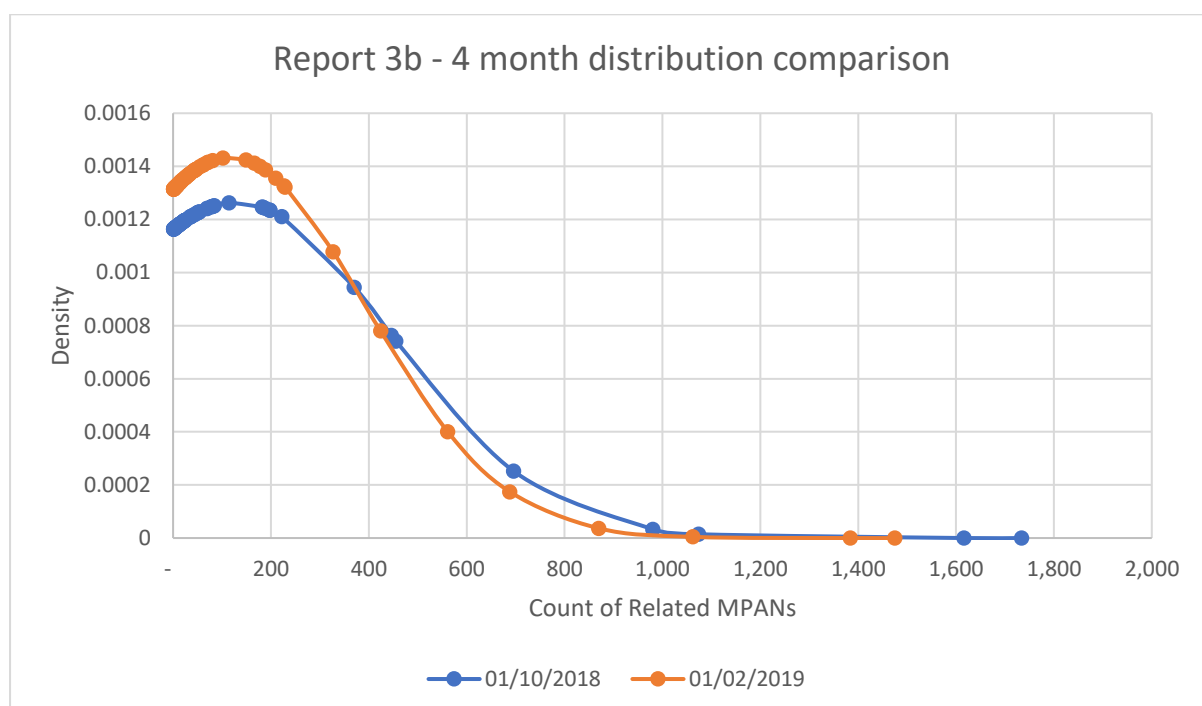
GRAPH DESCRIPTION:

For 01/02/2019, Large Suppliers contribute to 61% of all instances of report 3b MPANs with Medium Suppliers at 18% and Small Suppliers at 21%. This proportion of Supplier size split is consistent across previous updates from the last four months.



The total instances of report 3b Related MPANs has decreased in the past four months from 10,074 to 9,473 MPANs from October 2018 to February 2019.

The proportion of MPANs worked was led by large Suppliers who account for a 10% reduction in total instances in the past four months, this is followed by Small Suppliers with 7% from October 2018 to February 2019. Medium Suppliers proportion of the market increased by 15% from 1,463 to 1,685 from October 2018 to February 2019.



GRAPH DESCRIPTION:

The graph shows the average count of Report 3b Related MPANs has decreased from 129 to 117 MPANs and single largest instance has also decreased from 1,734 to 1,475 MPANs from 01/10/2018 to 01/02/2019.

In 01/02/2019 there is a larger proportion of Suppliers that have less than 230 instances of report 3b MPANs than compared to 01/10/2018.

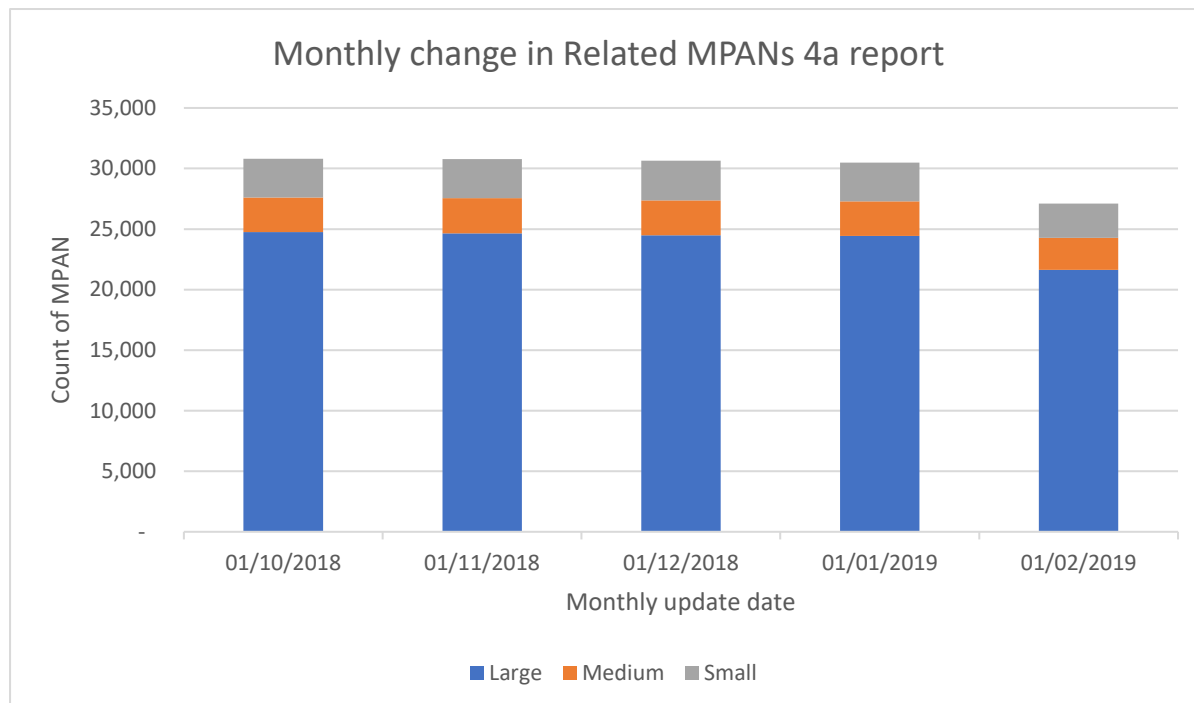
COMMENTARY:

The decrease in average count could be attributed to continued discussion and focus of the FSEG to manage Related MPANs. This change could be attributed to Gemserv engaging with Suppliers to inform them of their relative performance reports being produced for review.



REPORT 4A

Report 4a contains instances of Related MPANs with only a single related MTC MPAN at an address that is disconnected.



The graph shows the monthly change in Related MPANs 4a report.

Supplier Size	01/10/2018	01/11/2018	01/12/2018	01/01/2019	01/02/2019
Large	24,761	24,654	24,474	24,445	21,634
Medium	2,844	2,902	2,889	2,853	2,633
Small	3,200	3,231	3,284	3,181	2,843
Grand Total	30,805	30,787	30,647	30,479	27,110

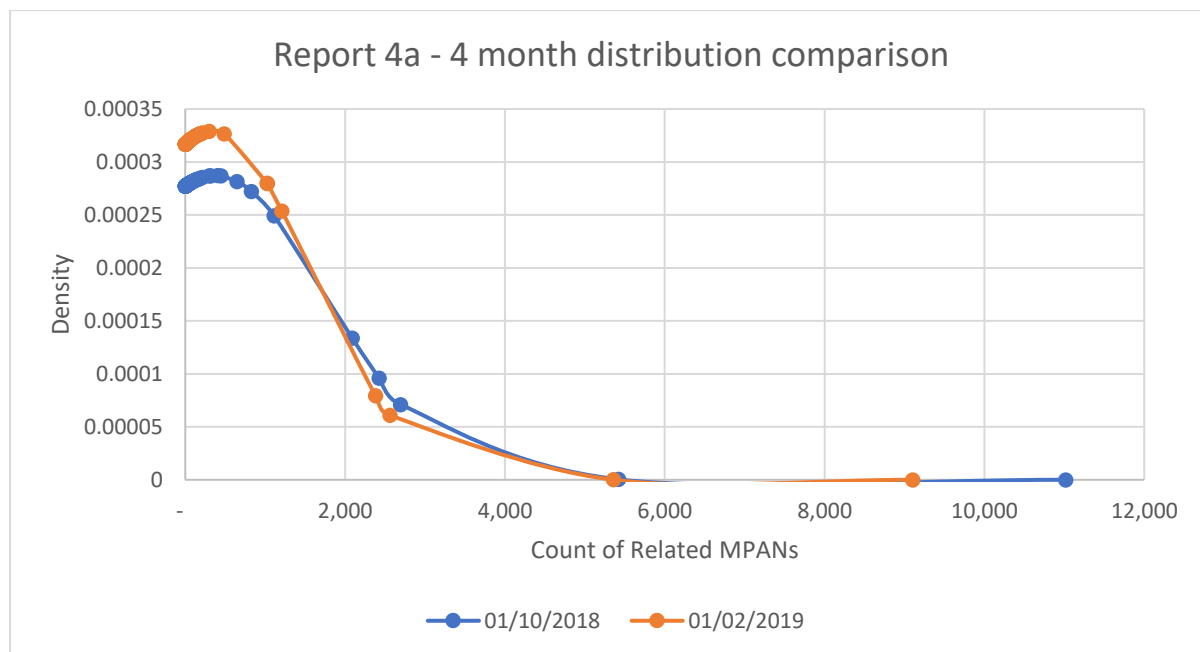
The table shows the monthly change in Related MPANs 4a report.

For 01/02/2019, Large Suppliers contribute to 80% of all instances of report 4a MPANs with Medium Suppliers at 10% and Small Suppliers at 10%. This proportion of Supplier size split is consistent across previous updates from the last four months.

The total instances of report 4a Related MPANs has decreased in the past four months from 30,805 to 27,110 MPANs from October 2018 to February 2019.



The proportion of MPANs worked was led by large Suppliers who account for a 13% reduction in total instances in the past four months, this is followed by Small Suppliers with 11% and Medium Suppliers with 7% from October 2018 to February 2019.



GRAPH DESCRIPTION:

The graph shows the average count of Report 4a Related MPANs has decreased from 371 to 334 MPANs and single largest instance has also decreased from 11,019 to 9,103 MPANs from 01/10/2018 to 01/02/2019. In 01/02/2019 there is a larger proportion of Suppliers that have less than 230 instances of report 4a MPANs than compared to 01/10/2018.

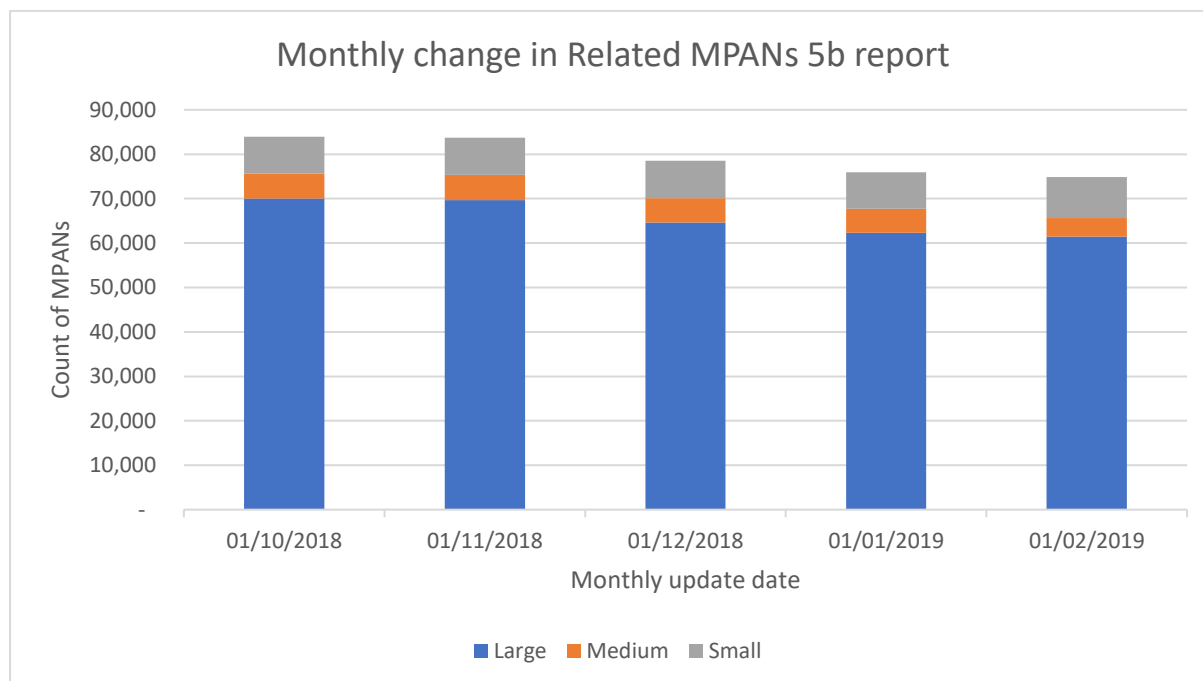
COMMENTARY:

The decrease in average count could be attributed to continued discussion and focus of the FSEG to manage Related MPANs. This change could be attributed to Gemserv engaging with Suppliers to inform them of their relative performance reports being produced for review.



REPORT 5B

Report 5b contains instances of Related MPANs with only a single related MTC MPAN at an address that has no disconnection with no other MPAN at the address (disconnected or not).



The graph shows the monthly change in Related MPANs 5b report.

Supplier Size	01/10/2018	01/11/2018	01/12/2018	01/01/2019	01/02/2019
Large	70,022	69,639	64,658	62,291	61,425
Medium	5,655	5,711	5,453	5,417	4,241
Small	8,259	8,384	8,432	8,259	9,208
Grand Total	83,936	83,734	78,543	75,967	74,874

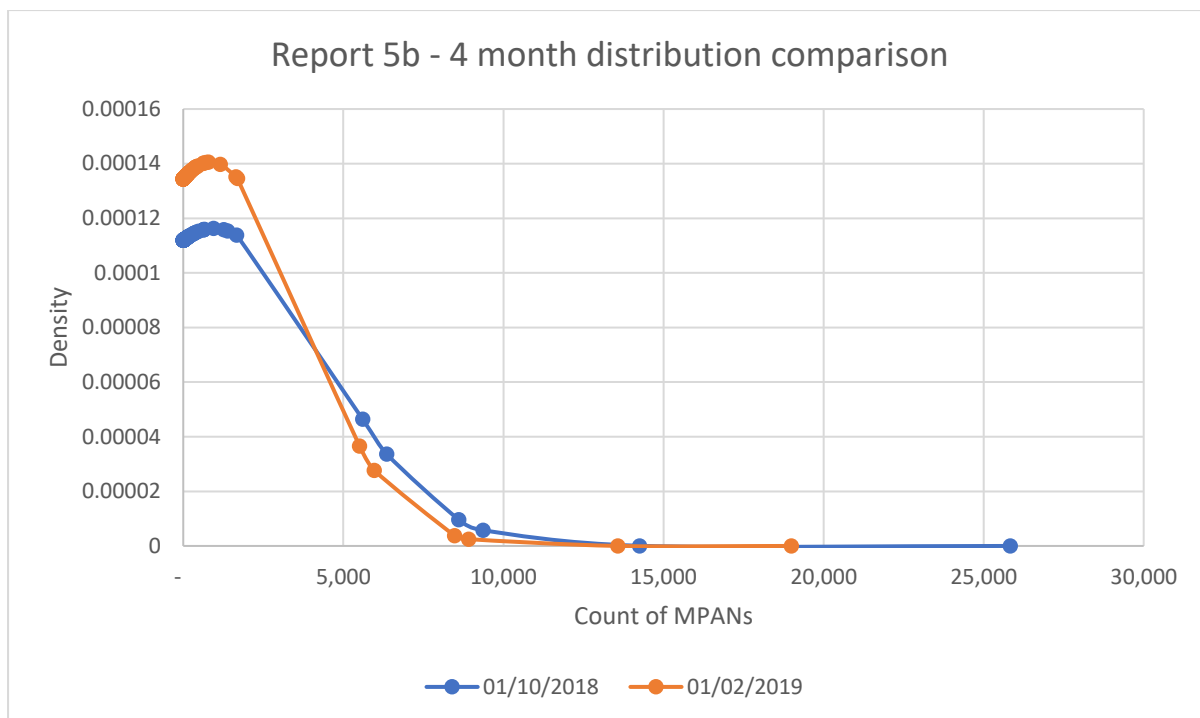
The table shows the monthly change in Related MPANs 5b report.

For 01/02/2019, Large Suppliers contribute to 82% of all instances of report 5b MPANs with Medium Suppliers at 5% and Small Suppliers at 12%. This proportion of Supplier size split is consistent across previous updates from the last four months.

The total instances of report 5b Related MPANs has decreased in the past four months from 83,936 to 74,874 MPANs from October 2018 to February 2019.



The proportion of MPANs worked was led by Medium Suppliers who account for a 25% reduction in total instances in the past four months, this is followed by Large Suppliers with 12% from October 2018 to February 2019. Small Suppliers has seen an increase of 11% in the same time period.



GRAPH DESCRIPTION:

The graph shows the average count of Report 5b Related MPANs has decreased from 953 to 850 MPANs and single largest instance has also decreased from 25,837 to 18,990 MPANs from 01/10/2018 to 01/02/2019. In 01/02/2019 there is a larger proportion of Suppliers that have less than 1,000 instances of report 5b MPANs than compared to 01/10/2018.

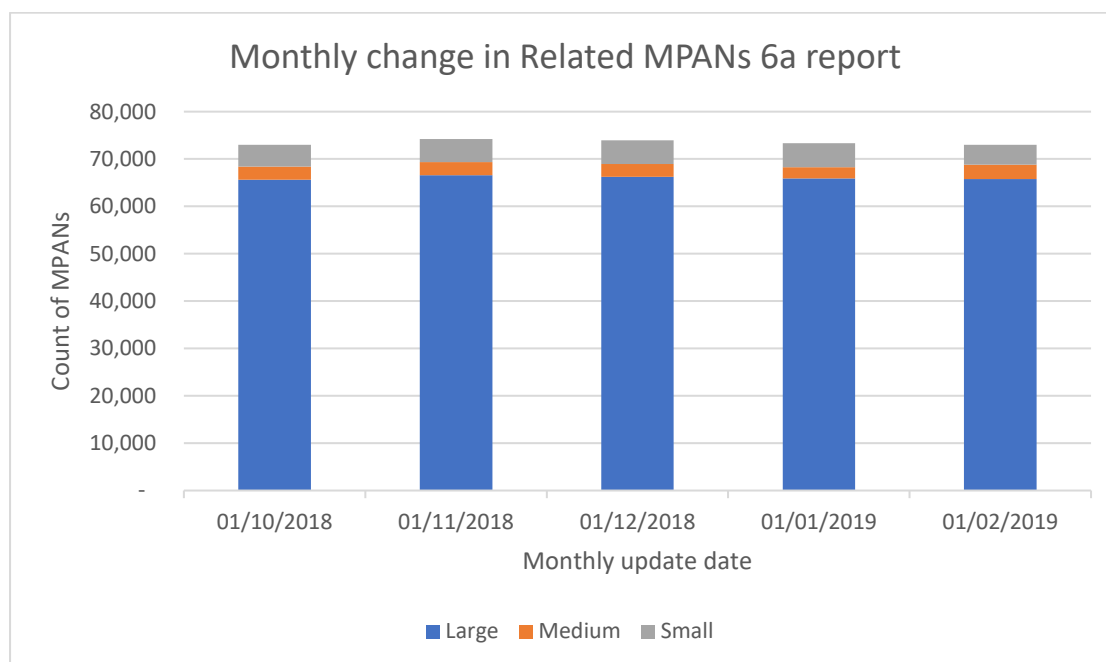
COMMENTARY:

The decrease in average count could be attributed to continued discussion and focus of the FSEG to manage Related MPANs. This change could be attributed to Gemserv engaging with Suppliers to inform them of their relative performance reports being produced for review.



REPORT 6A

Report 6a contains instances of Related MPANs with only a single related MTC MPAN at an address that has other unrelated MTCs MPANs at the address (including other MPANs) and the Supplier is the same for all MPANs.



The graph shows the monthly change in Related MPANs 6a report.

Supplier Size	01/10/2018	01/11/2018	01/12/2018	01/01/2019	01/02/2019
Large	65,643	66,598	66,275	65,886	65,739
Medium	2,756	2,735	2,684	2,383	3,095
Small	4,633	4,869	4,961	5,044	4,169
Grand Total	73,032	74,202	73,920	73,313	73,003

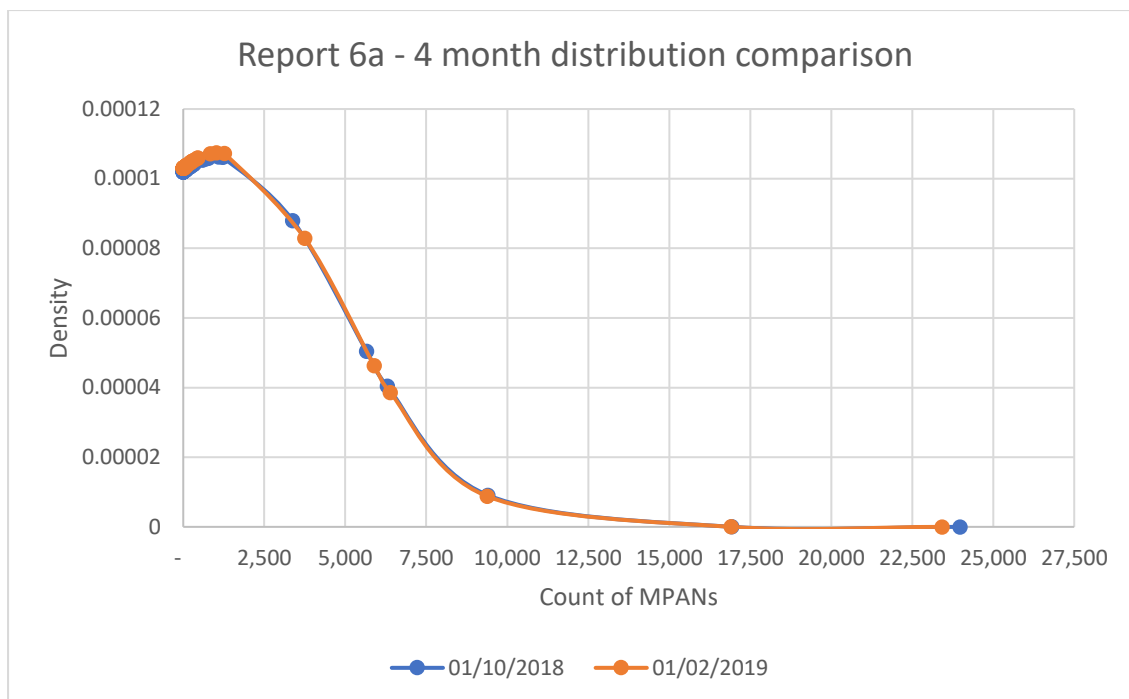
The table shows the monthly change in Related MPANs 6a report.

For 01/02/2019, Large Suppliers contribute to 90% of all instances of report 6a MPANs with Medium Suppliers at 4% and Small Suppliers at 6%. This proportion of Supplier size split is consistent across previous updates from the last four months.

The total instances of report 6a Related MPANs has decreased in the past four months by 29 from 73,032 to 73,003 MPANs from October 2018 to February 2019.



The proportion of MPANs worked was led by Small Suppliers who account for a 10% reduction in total instances in the past four months from October 2018 to February 2019. Both Large and Medium Suppliers has seen an increase of 0.15% and 12% respectively in the same time period.



GRAPH DESCRIPTION:

The graph shows the average count of Report 6a Related MPANs has remained relatively static at 1,074 MPANs and single largest instance has decreased from 23,975 to 23,418 MPANs from 01/10/2018 to 01/02/2019.

There has been relatively no change between 01/10/2018 to 01/02/2019 for Report 6a.

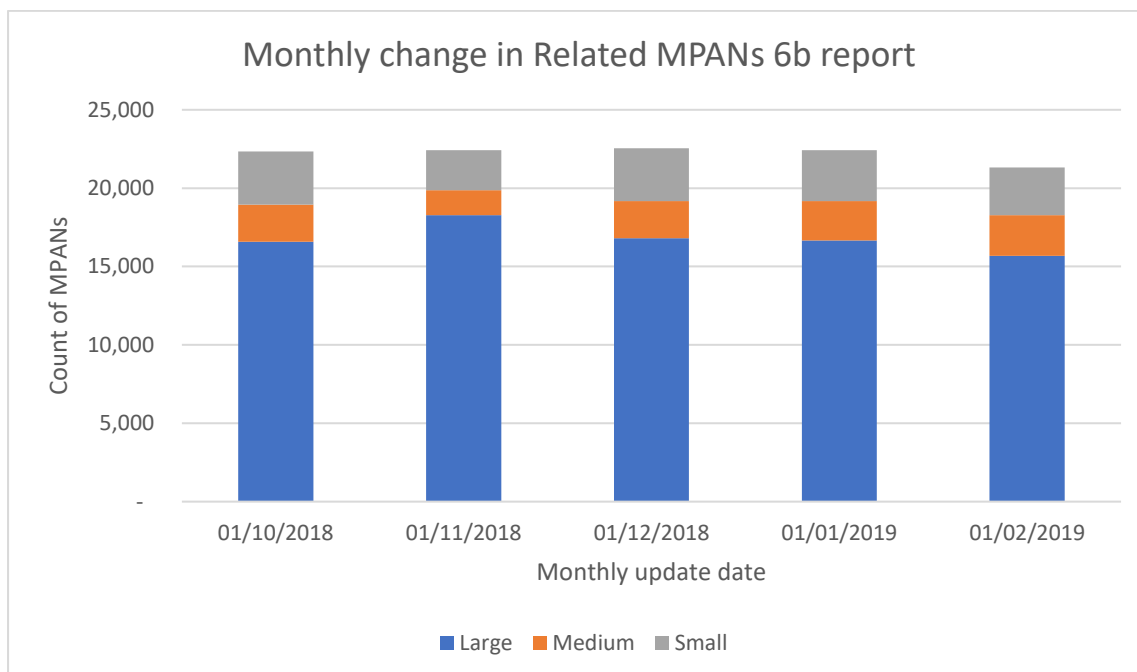
COMMENTARY:

The relatively little change in figures can be attributed to the nature of the scenario that is being reported where the process and complexity of these scenarios impacts the rate at which they are worked.



REPORT 6B

Report 6b contains instances of Related MPANs with only a single related MTC MPAN at an address that has other unrelated MTCs MPANs at the address (including other MPANs) and the Supplier is split for MPANs.



The graph shows the monthly change in Related MPANs 6b report.

Supplier Size	01/10/2018	01/11/2018	01/12/2018	01/01/2019	01/02/2019
Large	16,587	18,272	16,797	16,662	15,687
Medium	2,366	1,594	2,375	2,520	2,582
Small	3,388	2,557	3,368	3,244	3,049
Grand Total	22,341	22,423	22,540	22,426	21,318

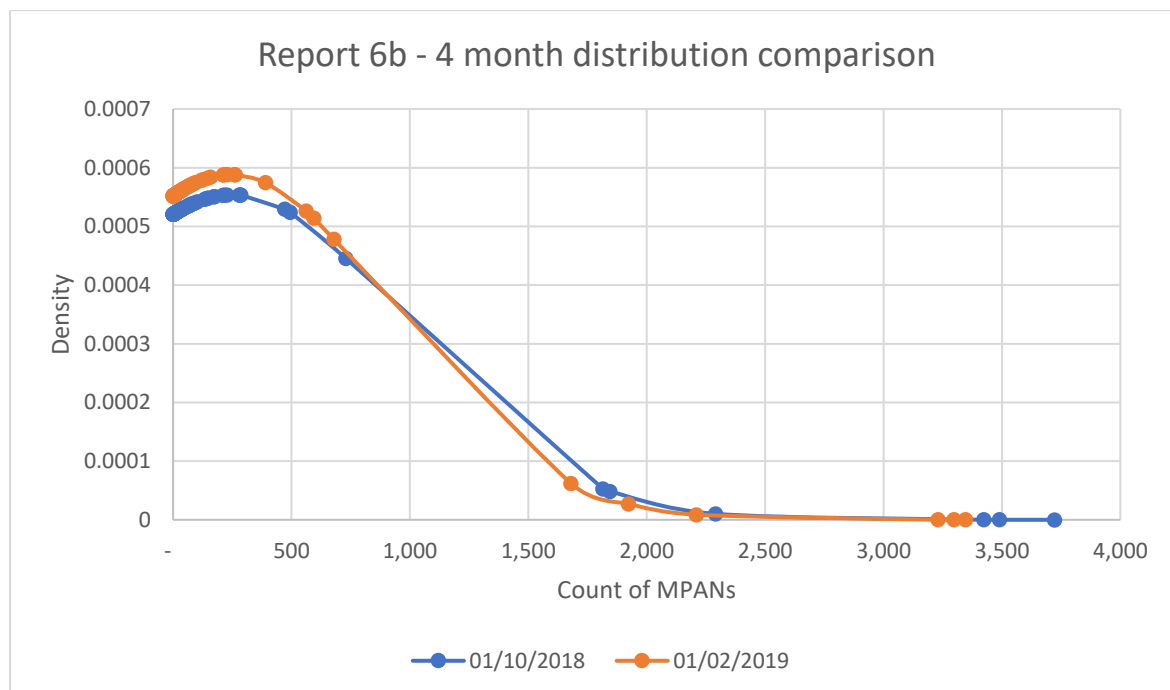
The table shows the monthly change in Related MPANs 6b report.

For 01/02/2019, Large Suppliers contribute to 73% of all instances of report 6b MPANs with Medium Suppliers at 12% and Small Suppliers at 14%. This proportion of Supplier size split is consistent across previous updates from the last four months.

The total instances of report 6b Related MPANs has decreased in the past four months by 1,023 from 22,341 to 21,318 MPANs from October 2018 to February 2019.



The proportion of MPANs worked was led by Small Suppliers who account for a 10% reduction in total instances in the past four months and is followed by Large Suppliers at 5% from October 2018 to February 2019. Medium Suppliers have seen an increase of 9% for the same period.



GRAPH DESCRIPTION:

The graph shows the average count of Report 6b Related MPANs has decreased from 253 to 242 MPANs and single largest instance has also decreased from 3,722 to 3,346 MPANs from 01/10/2018 to 01/02/2019.

COMMENTARY:

The decrease in average count could be attributed to continued discussion and focus of the FSEG to manage Related MPANs. This change could be attributed to Gemserv engaging with Suppliers to inform them of their relative performance reports being produced for review.



CONSIDERATIONS:

Further analysis to be performed with additional data for future iterations of reporting

Increase in rate of worked instances to achieve target for cut over

Prioritisation of Related MPAN reports based on reporting type

Prioritisation of Related MPAN reports based on Supplier size

Engagement with all Suppliers in understanding their awareness for working Related MPANs

Engagement with all Suppliers in understanding their processes for working Related MPANs

Engagement with all Suppliers in understanding current operational challenges and achievements for working Related MPANs