

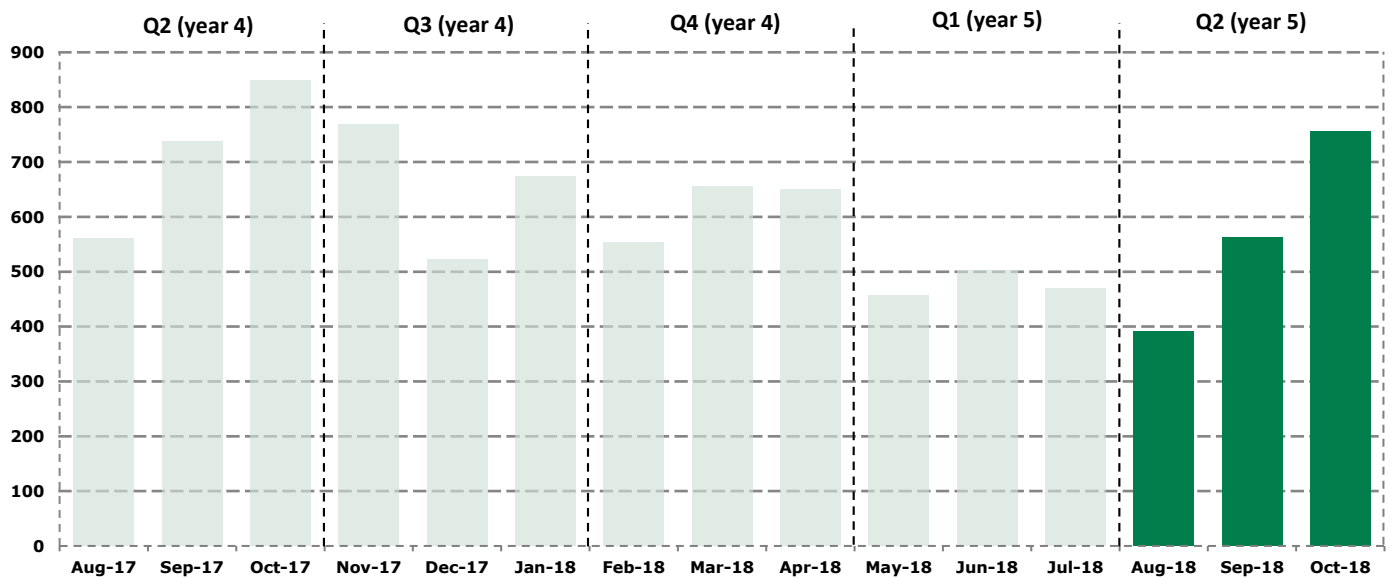
# Domestic Renewable Heat Incentive

[www.ofgem.gov.uk/drhi](http://www.ofgem.gov.uk/drhi)

## Quarterly Report Issue 18

The Domestic Renewable Heat Incentive (RHI) opened for applications on 9 April 2014 for customers across England, Scotland and Wales who install eligible renewable heating technologies in their homes. This report details scheme activity in Quarter 2 (year 5) of the Domestic RHI scheme, covering the period August 2018 to October 2018\*.

### Number of accreditations



**Quarterly accreditations**

**Q3**  
Nov 17 – Jan 18     **1,966**

---

**Q4**  
Feb 18 – Apr 18     **1,895**

---

**Q1**  
May 18 – Jul 18     **1,429**

---

**Q2**  
Aug 18 – Oct 18     **1,710**

**Accreditations made**

<b>391</b> Aug-18	<b>756</b> Oct-18
<b>563</b> Sep-18	<b>1,710</b> Quarter Total

In total, we have made

**64,642**

accreditations since the launch of the scheme

\*As per the Domestic Renewable Heat Incentive regulations, our quarterly reports cover the following periods:

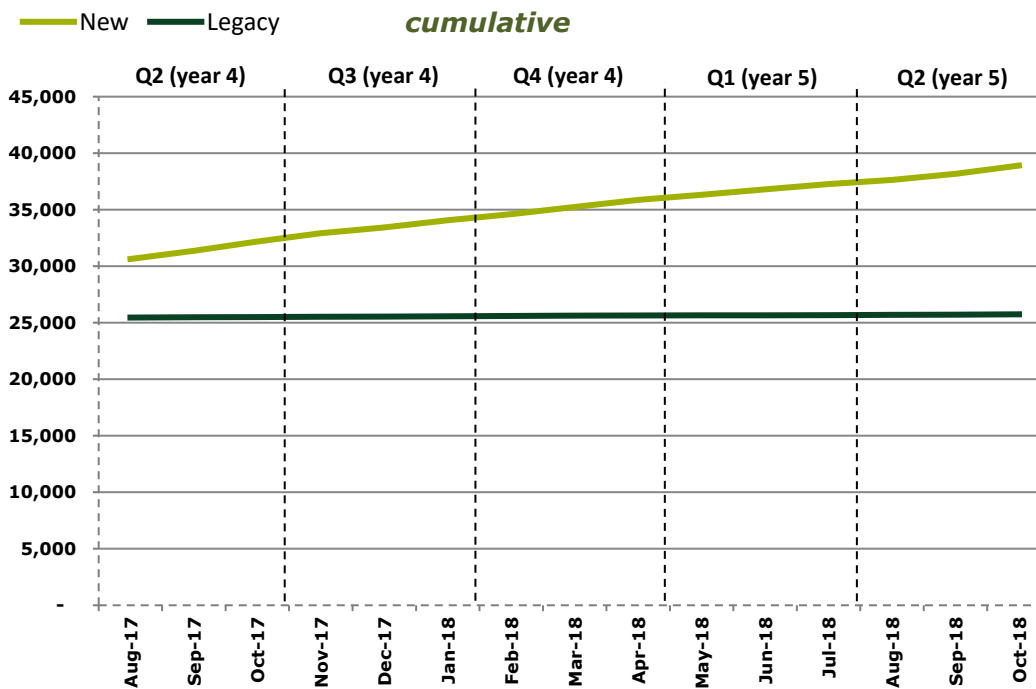
- Q1:** May to July
- Q2:** August to October
- Q3:** November to January
- Q4:** February to April

# Domestic Renewable Heat Incentive

## Legacy and new accreditations

Q2 (year 4)		Q3 (year 4)		Q4 (year 4)		Q1 (year 5)		Q2 (year 5)	
Legacy	New	Legacy	New	Legacy	New	Legacy	New	Legacy	New
66	2,080	73	1,893	61	1,798	36	1,393	70	1,640

Legacy accreditations are systems that were commissioned between 15 July 2009 when the RHI was first announced by DECC (now BEIS), and 9 April 2014 when the Domestic RHI scheme launched. New systems are those that were commissioned on or after 9 April 2014.



Legacy	
17	24
Aug-18	Sep-18
29	70
Oct-18	Quarter Total

New	
374	539
Aug-18	Sep-17
727	1,640
Oct-18	Quarter Total

In total, we have made  
**25,742**  
 legacy accreditations since the launch of the scheme

In total, we have made  
**38,900**  
 new accreditations since the launch of the scheme

## Payments made to date



**£175.6**

million

Biomass



**£94.9**

million

Ground Source Heat Pump



**£68.6**

million

Air Source Heat Pump



**£8.4**

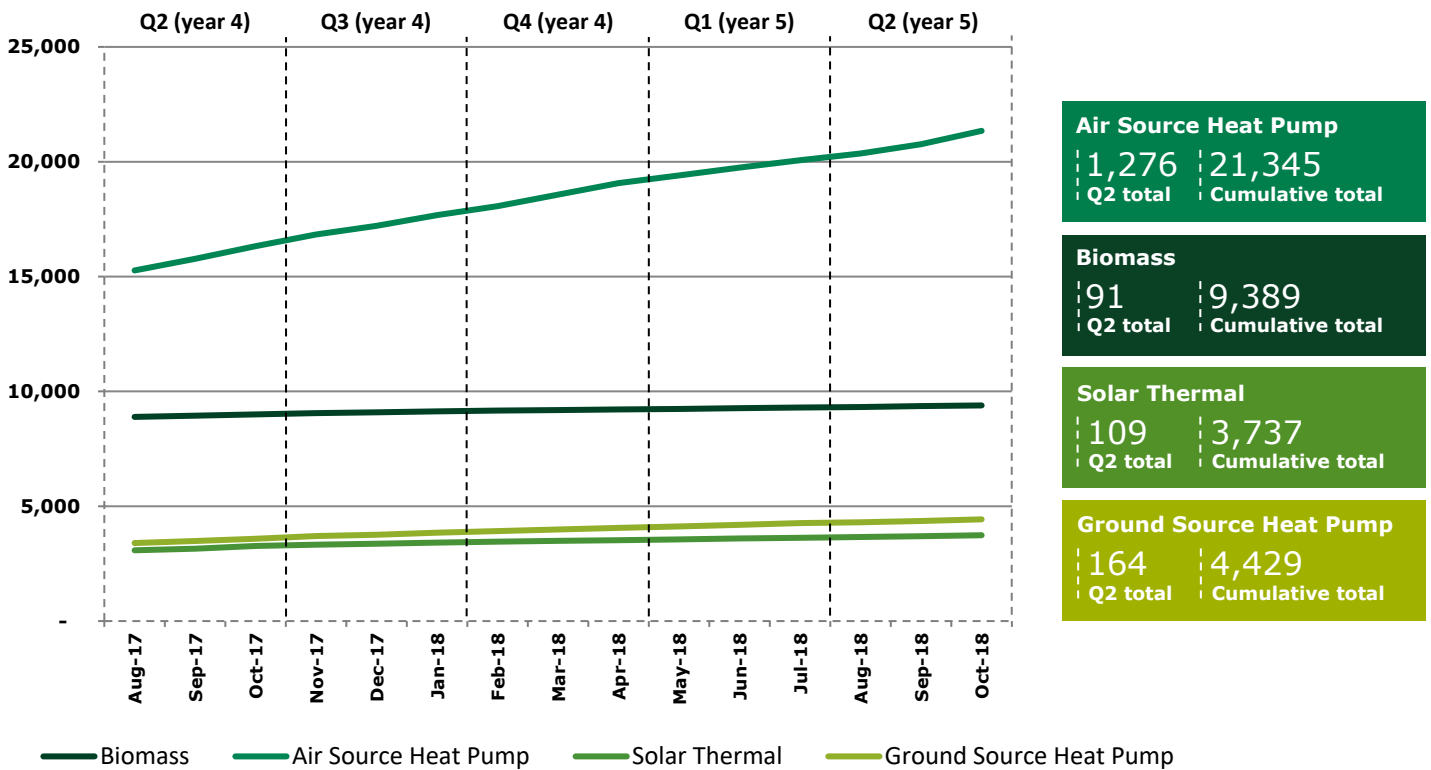
million

Solar Thermal

## Accreditations by technology for new applications

The graph below shows the cumulative number of accreditations made per technology type for new systems only (systems commissioned on or after 9 April 2014). The total number of new accredited systems for Ground Source Heat Pumps has continued to exceed those for Solar Thermal systems. The biggest increase this quarter has been in Air Source Heat Pumps.

### New Accreditations (cumulative)

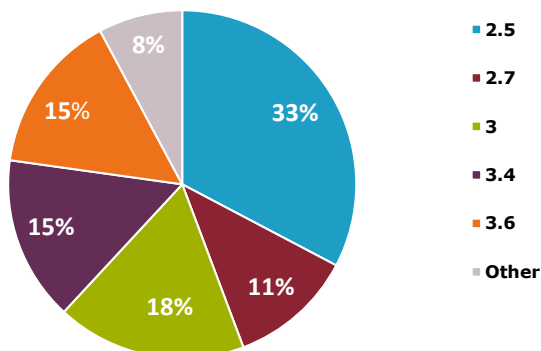


## Seasonal Performance Factors (SPFs)

The SPF of a heat pump is a measure of how efficiently it is operating. The higher the SPF, the more energy efficient the system is. Only heat pumps with SPFs of 2.5 or higher can be eligible for Domestic RHI. All legacy systems were automatically assigned an SPF of 2.5, unless the applicant provided SPF calculations completed by the installer.

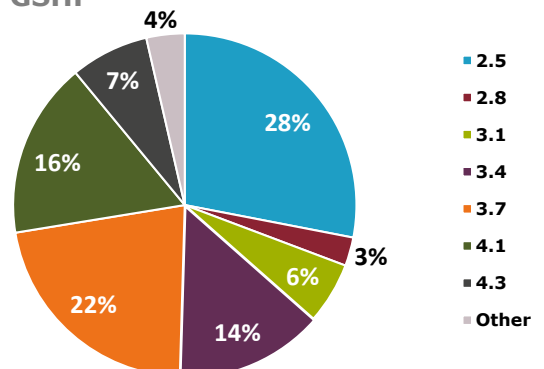
### ASHP Seasonal performance factors (SPFs)

ASHP



### GSHP Seasonal performance factors (SPFs)

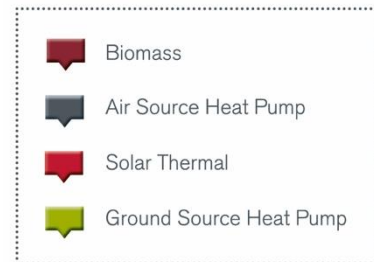
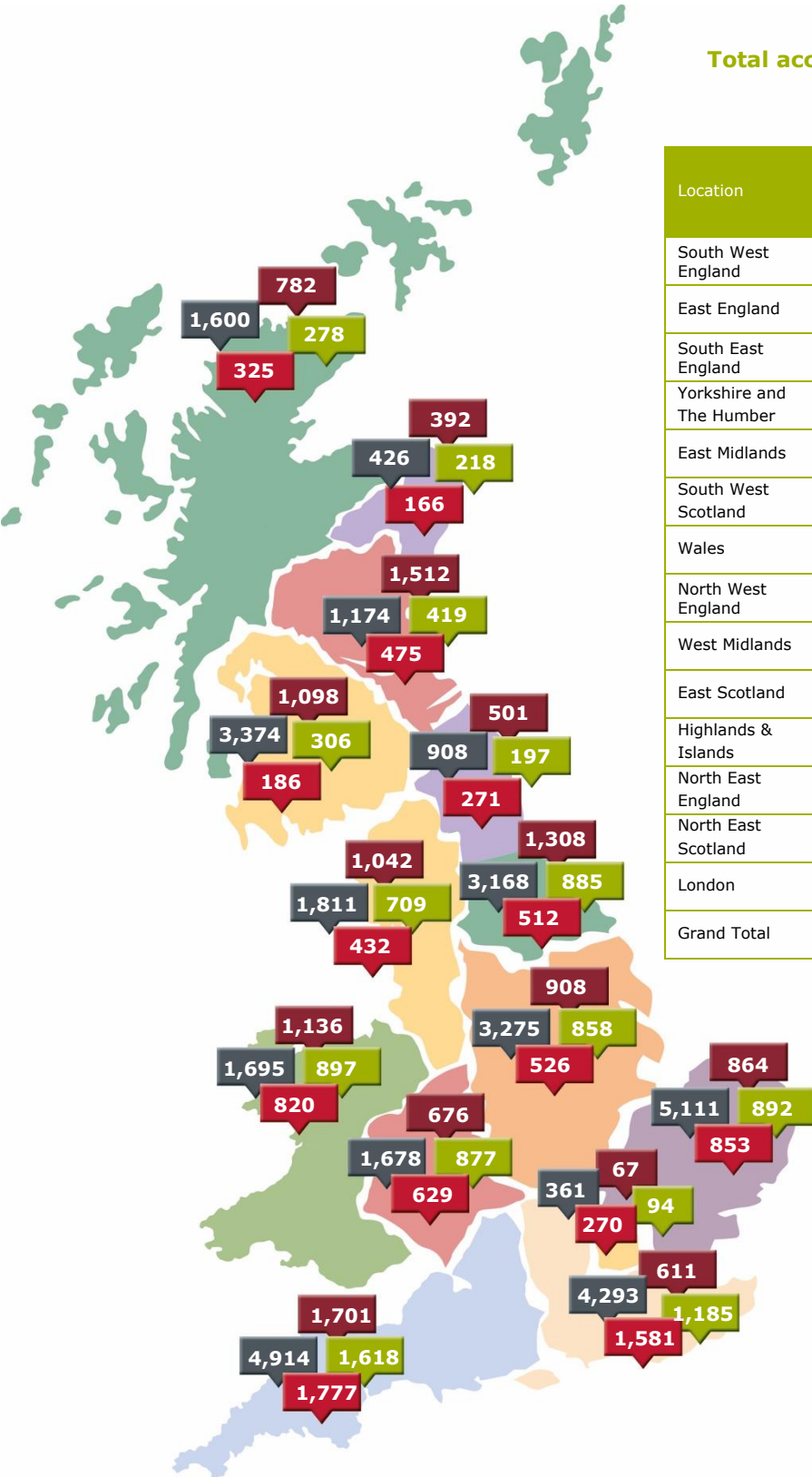
GSHP



## Regional distribution of accreditations

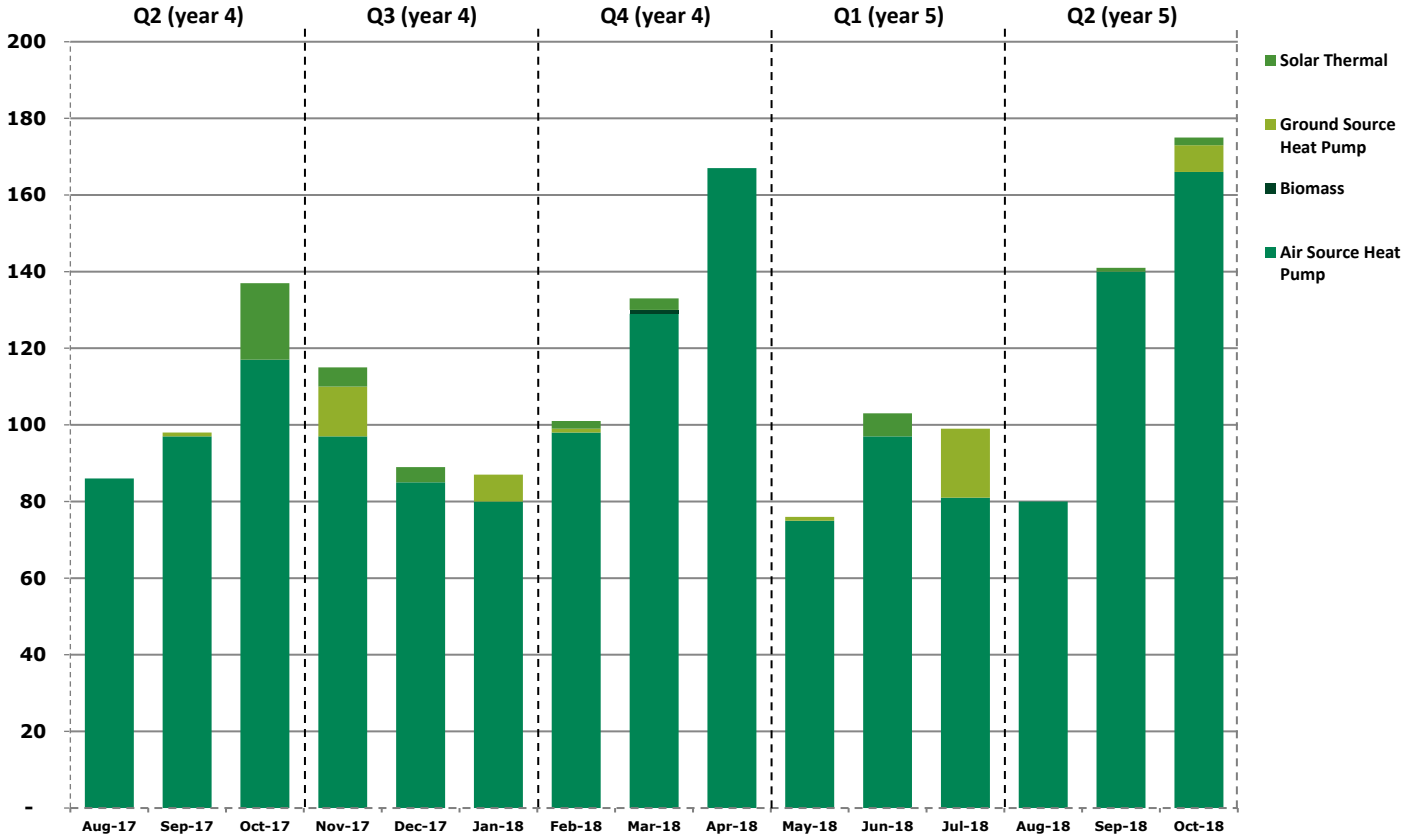
Total accreditations per region (up to Oct 2018)

Location	ASHP	Biomass	GSHP	Solar Thermal	Grand Total	% Increase from Q1
South West England	4,914	1,701	1,618	1,777	<b>10,010</b>	<b>2.0</b>
East England	5,111	864	892	853	<b>7,720</b>	<b>1.9</b>
South East England	4,293	611	1,185	1,581	<b>7,670</b>	<b>1.5</b>
Yorkshire and The Humber	3,168	1,308	885	512	<b>5,873</b>	<b>1.8</b>
East Midlands	3,275	908	858	526	<b>5,567</b>	<b>4.4</b>
South West Scotland	3,374	1,098	306	186	<b>4,964</b>	<b>1.5</b>
Wales	1,695	1,136	897	820	<b>4,548</b>	<b>2.2</b>
North West England	1,811	1,042	709	432	<b>3,994</b>	<b>0.7</b>
West Midlands	1,678	676	877	629	<b>3,860</b>	<b>2.4</b>
East Scotland	1,174	1,512	419	475	<b>3,580</b>	<b>2.3</b>
Highlands & Islands	1,600	782	278	325	<b>2,985</b>	<b>2.1</b>
North East England	908	501	197	271	<b>1,877</b>	<b>3.1</b>
North East Scotland	426	392	218	166	<b>1,202</b>	<b>1.2</b>
London	361	67	94	270	<b>792</b>	<b>2.6</b>
<b>Grand Total</b>	<b>33,788</b>	<b>12,598</b>	<b>9,433</b>	<b>8,823</b>	<b>64,642</b>	<b>2.1</b>

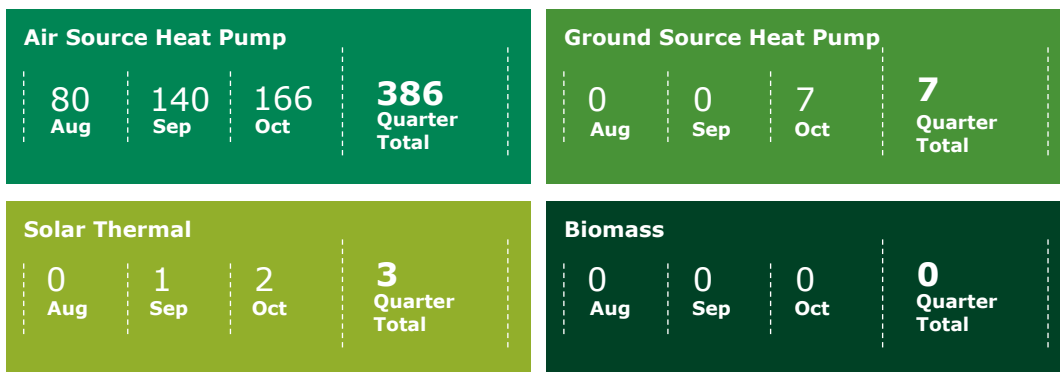


## Registered Social Landlords (RSLs)

In addition to homeowners, Registered Social Landlords (RSLs) are also eligible to apply for the Domestic RHI. In the last twelve months, 1,366 accreditations have been made to RSLs, 95% (1,295) of which are Air Source Heat Pumps.



### RSL accreditations (Q2)



We have made over  
**£20.2m**  
of payments to Registered  
Social Landlords to date.

Our  
Administration

**73.9%**

of applications submitted  
last quarter received a  
decision within working 30  
days

**78.1%** Overall satisfaction score for customer survey

**We estimate that accredited systems will save over**

**4.2 MT of CO<sub>2</sub>**

**OVER THE LIFETIME OF THE SCHEME**

**Since scheme launch, accredited  
systems have generated over:**

**3,132,466 MWh**

**OF RENEWABLE HEAT**



If you have any questions about the content of this report, please let us know by emailing  
[DRHIResolutions@ofgem.gov.uk](mailto:DRHIResolutions@ofgem.gov.uk)

