

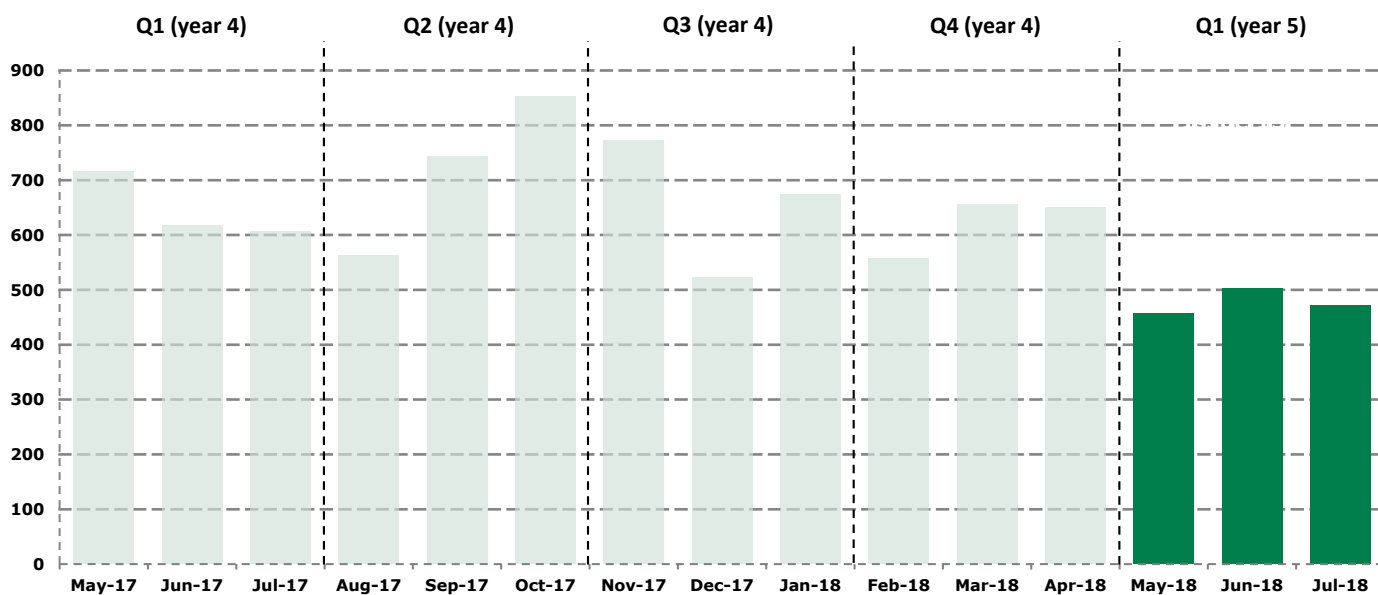
# Domestic Renewable Heat Incentive

[www.ofgem.gov.uk/drhi](http://www.ofgem.gov.uk/drhi)

## Quarterly Report Issue 17

The Domestic Renewable Heat Incentive (RHI) opened for applications on 9 April 2014 for customers across England, Scotland and Wales who install eligible renewable heating technologies in their homes. This report details scheme activity in Quarter 1 (year 5) of the Domestic RHI scheme, covering the period May 2018 to July 2018\*.

## Number of accreditations



**Quarterly accreditations**

<b>Q2</b> Aug 17 - Oct 17	<b>2,158</b>
<b>Q3</b> Nov 17 - Jan 18	<b>1,969</b>
<b>Q4</b> Feb 18 - Apr 18	<b>1,863</b>
<b>Q1</b> May 18 - Jul 18	<b>1,430</b>

**Accreditations made**

<b>457</b> May-18	<b>502</b> Jun-18
<b>471</b> Jul-18	<b>1,430</b> Quarter Total

In total, we have made

**63,321**

accreditations since the launch of the scheme

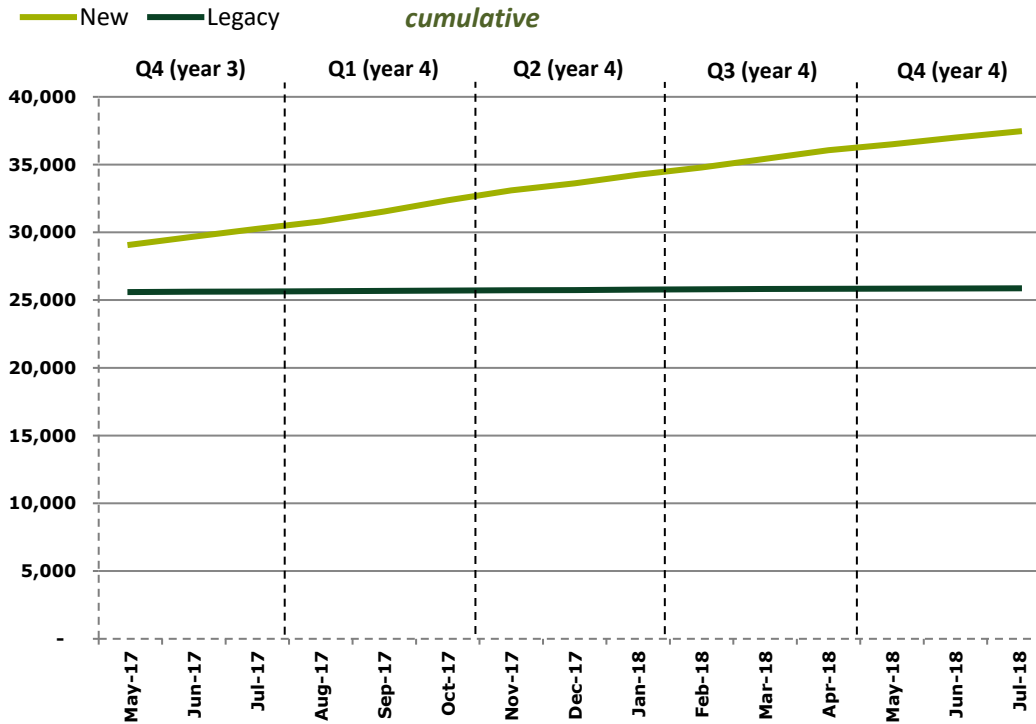
\*As per the Domestic Renewable Heat Incentive regulations, our quarterly reports cover the following periods:

- Q1:** May to July
- Q2:** August to October
- Q3:** November to January
- Q4:** February to April

## Legacy and new accreditations

Q1 (year 4)		Q2 (year 4)		Q3 (year 4)		Q4 (year 4)		Q1 (year 5)	
Legacy	New	Legacy	New	Legacy	New	Legacy	New	Legacy	New
63	1,867	66	2,092	73	1,869	61	1,802	36	1,394

Legacy accreditations are systems that were commissioned between 15 July 2009 when the RHI was first announced by DECC (now BEIS), and 9 April 2014 when the Domestic RHI scheme launched. New systems are those that were commissioned on or after 9 April 2014.



Legacy	
11	12
May-18	Jun-18
13	36
Jul-18	Quarter Total

New	
446	490
May-18	Jun-17
458	1,394
Jul-18	Quarter Total

In total, we have made

# 25,870

legacy accreditations since the launch of the scheme

In total, we have made

# 37,451

new accreditations since the launch of the scheme

## Payments made to date



**£163.2**

million  
Biomass



**£86.5**

million  
Ground Source Heat Pump



**£61.8**

million  
Air Source Heat Pump



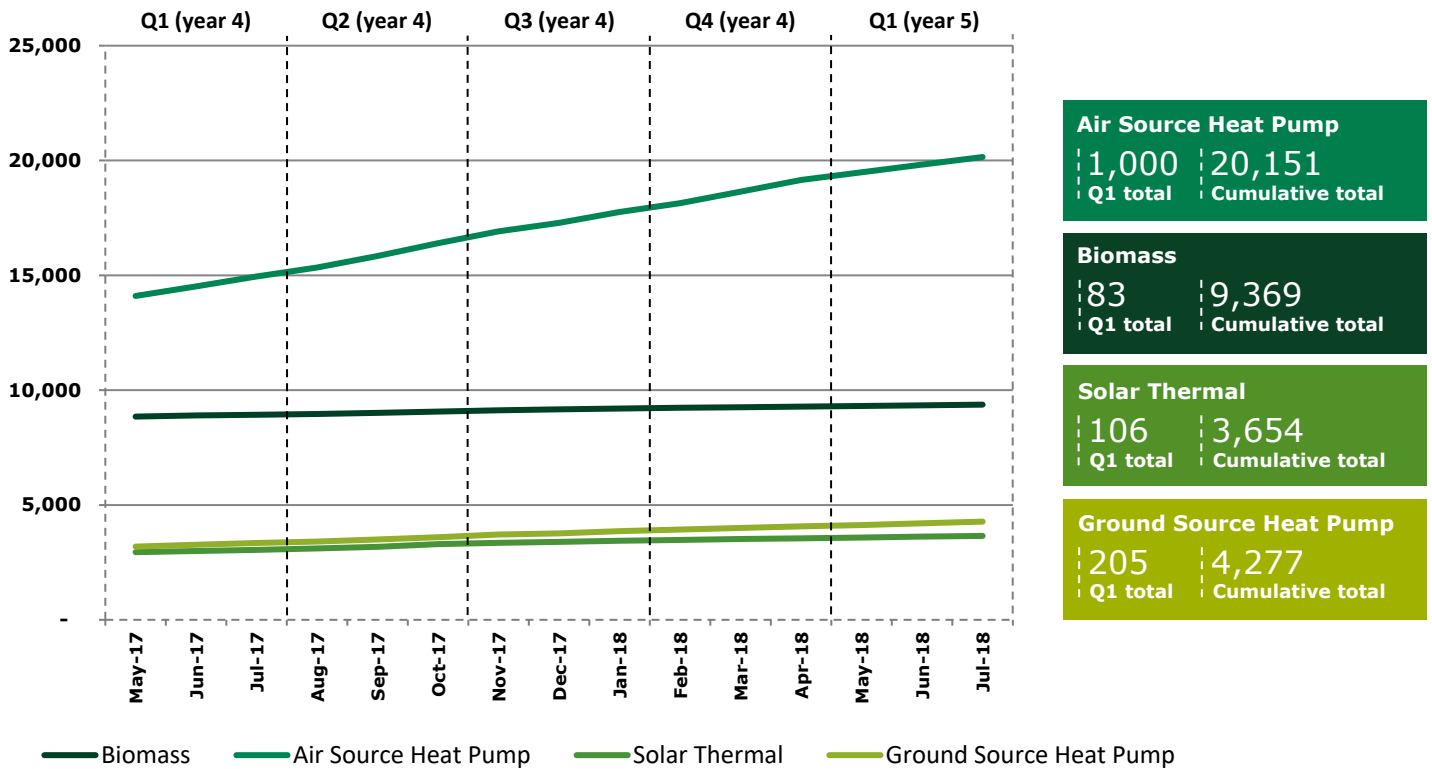
**£7.8**

million  
Solar Thermal

## Accreditations by technology for new applications

The graph below shows the cumulative number of accreditations made per technology type for new systems only (systems commissioned on or after 9 April 2014). The total number of new accredited systems for Ground Source Heat Pumps has continued to exceed those for Solar Thermal systems. The biggest increase this quarter has been in Air Source Heat Pumps.

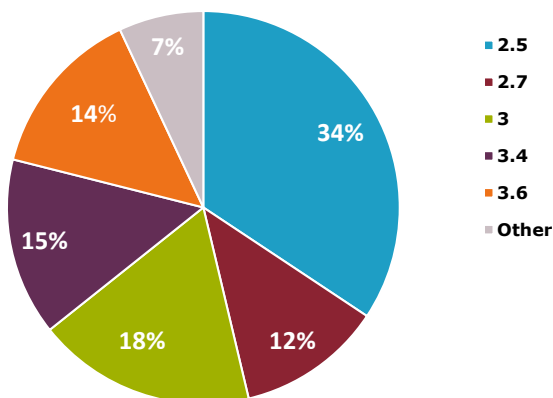
### New Accreditations (cumulative)



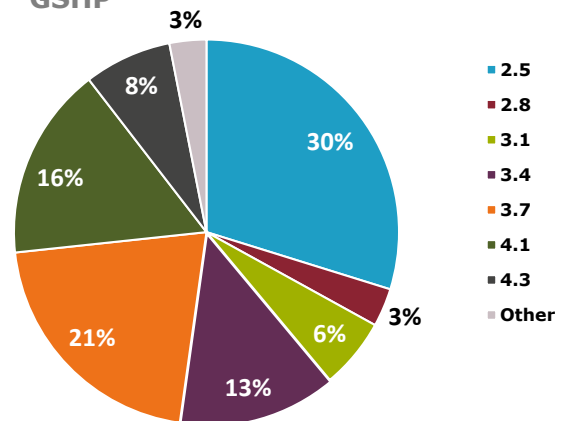
## Seasonal Performance Factors (SPFs)

The SPF of a heat pump is a measure of how efficiently it is operating. The higher the SPF, the more energy efficient the system is. Only heat pumps with SPFs of 2.5 or higher can be eligible for Domestic RHI. All legacy systems were automatically assigned an SPF of 2.5, unless the applicant provided SPF calculations completed by the installer.

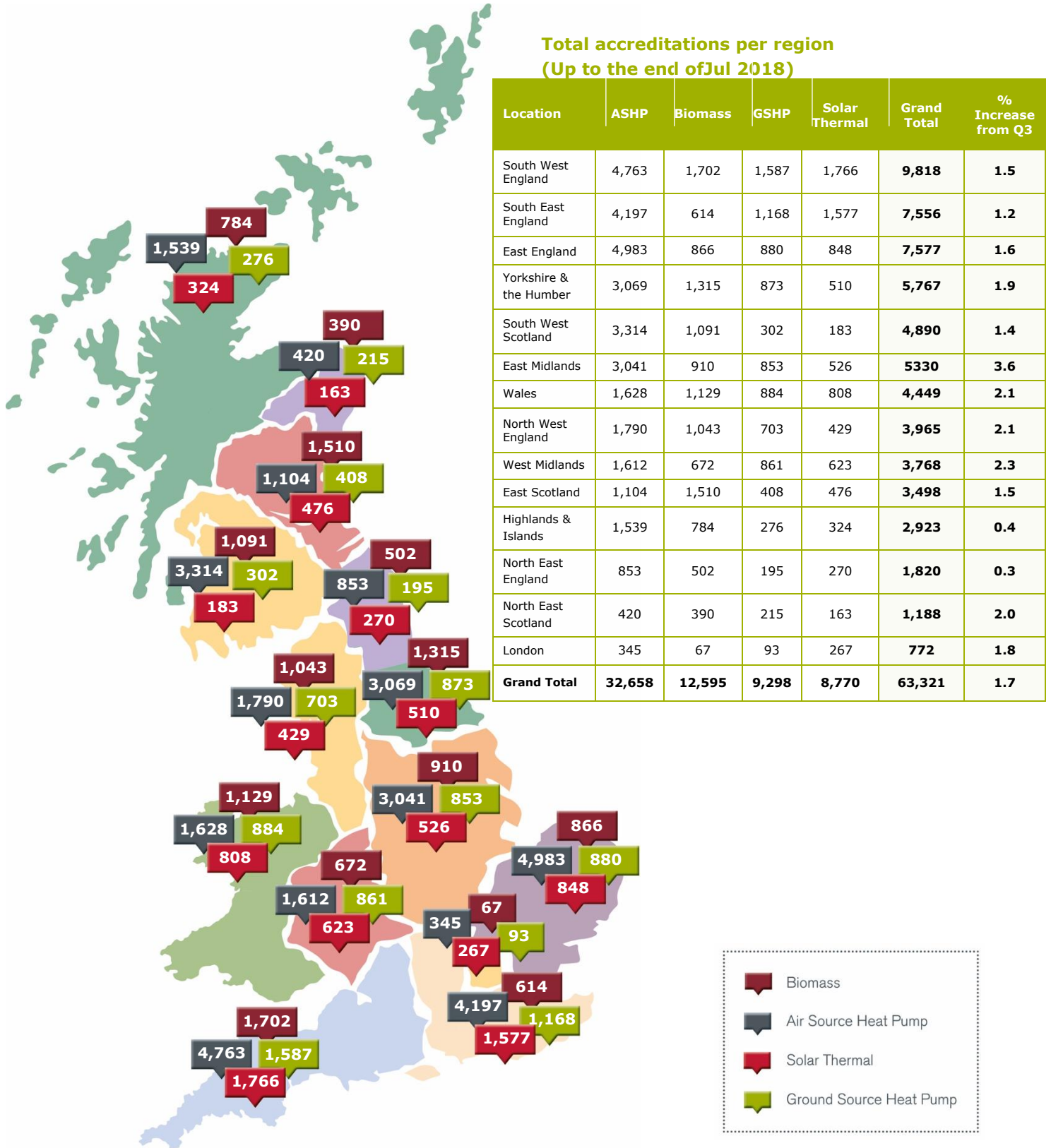
ASHP Seasonal performance factors (SPFs)  
ASHP



GSHP Seasonal performance factors (SPFs)  
GSHP

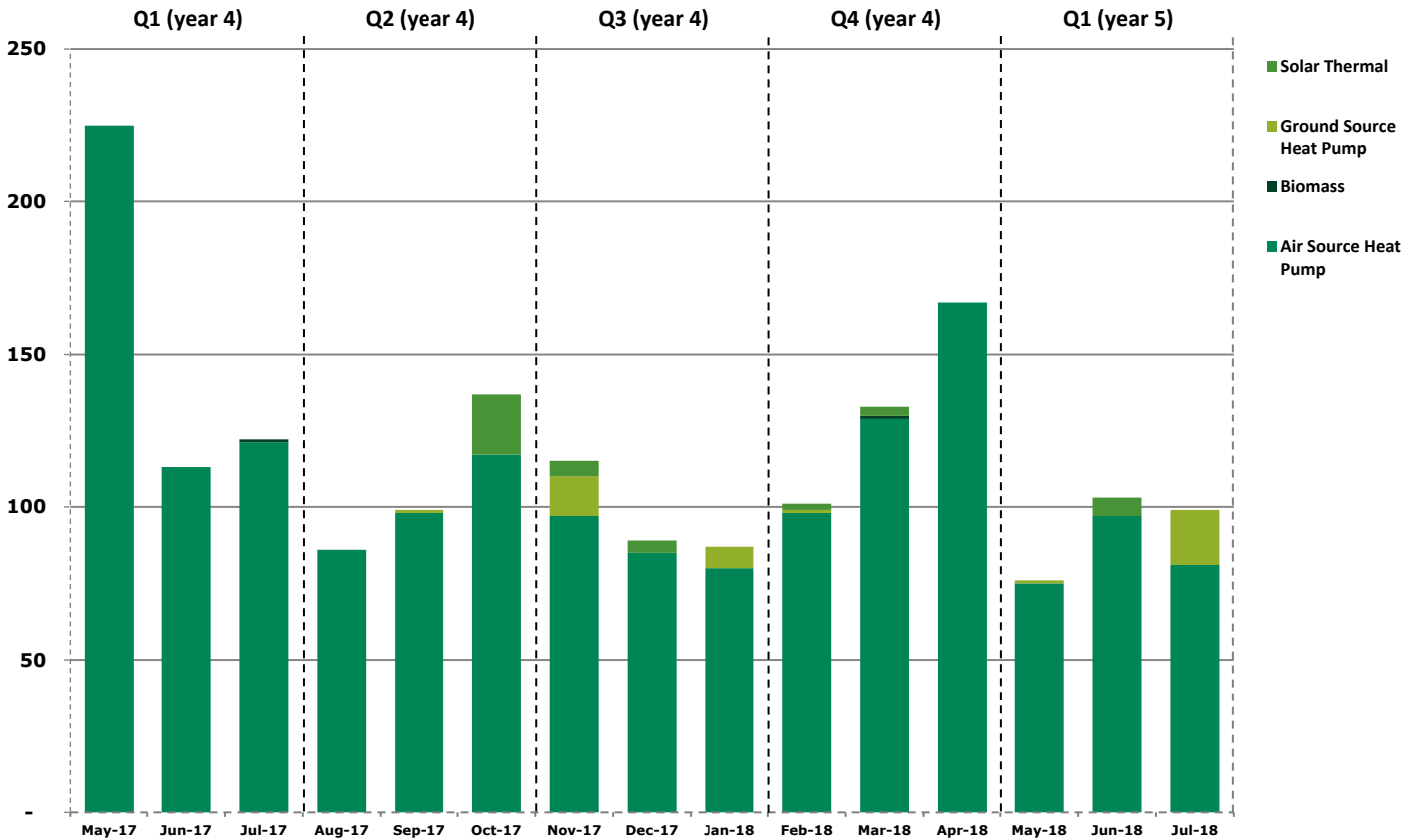


## Regional distribution of accreditations

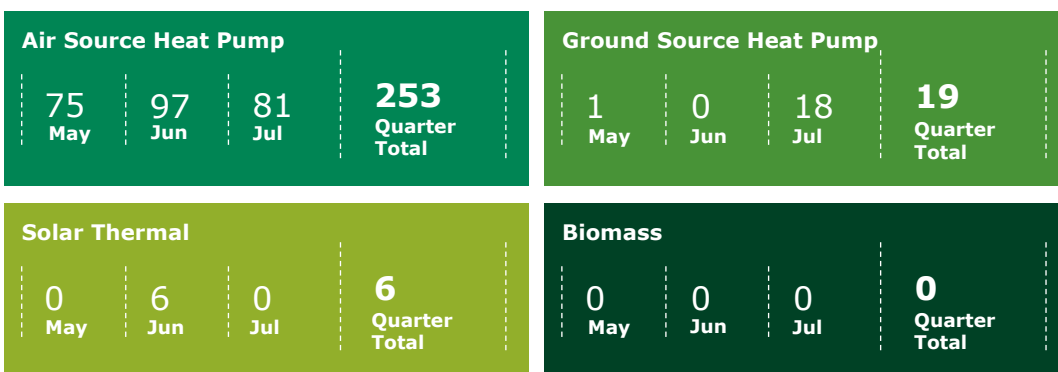


## Registered Social Landlords (RSLs)

In addition to homeowners, Registered Social Landlords (RSLs) are also eligible to apply for the Domestic RHI. In the last twelve months, 1,292 accreditations have been made to RSLs, 94% (1,210) of which are Air Source Heat Pumps.



### RSL accreditations (Q1)



We have made over  
**£18.3m**  
 of payments to Registered Social Landlords to date.

Our  
Administration

**68.4%**

of applications submitted  
last quarter received a  
decision within working 30  
days

**71.8%** Overall satisfaction score for customer survey

**We estimate that accredited systems will save over**

**4.2 MT of CO<sub>2</sub>**

**OVER THE LIFETIME OF THE SCHEME**

**Since scheme launch, accredited  
systems have generated over:**

**2,886,262.6 MWh**

**OF RENEWABLE HEAT**



If you have any questions about the content of this report, please let us know by emailing [DRHIResolutions@ofgem.gov.uk](mailto:DRHIResolutions@ofgem.gov.uk)

