

Domestic Renewable Heat Incentive Quarterly Report

Update

www.ofgem.gov.uk/drhi

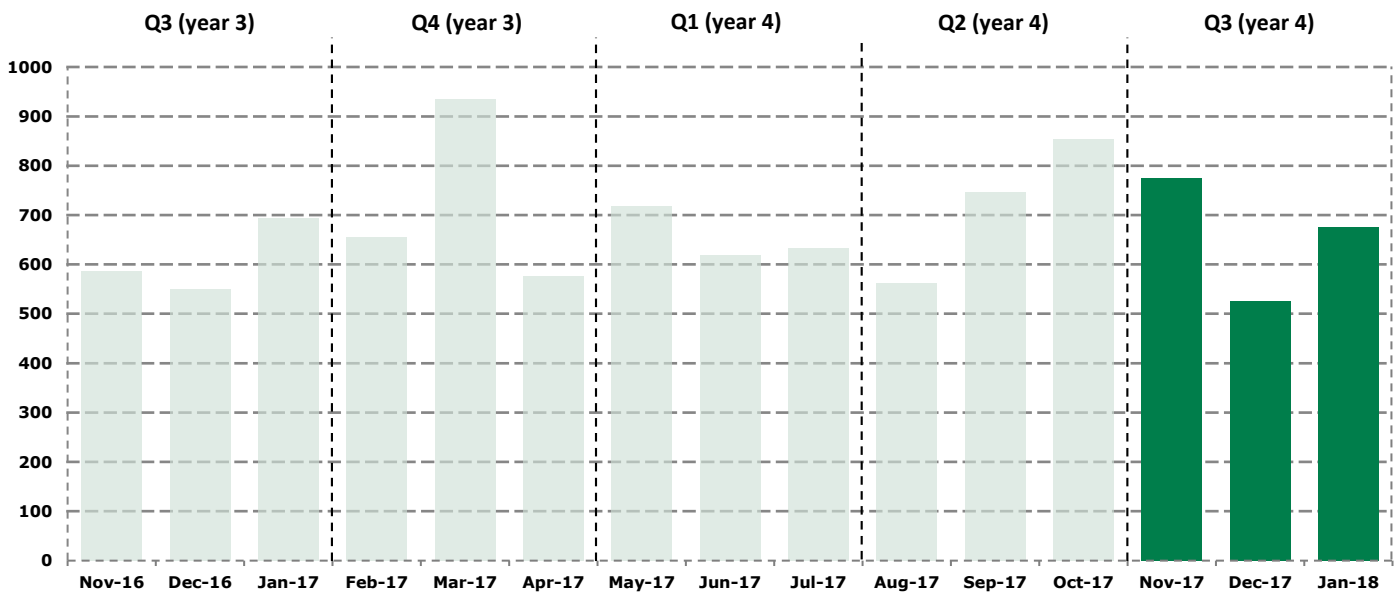
March 2018

Issue 15



The Domestic Renewable Heat Incentive (RHI) opened for applications on 9 April 2014 for customers across England, Scotland and Wales who install eligible renewable heating technologies in their homes. This report details scheme activity in Quarter 3 (year 4) of the Domestic RHI scheme, covering the period November 2017 to January 2018*.

Number of accreditations



Quarterly accreditations

Q4 Feb 17 - Apr 17	2,167
Q1 May 17 - Jul 17	1,970
Q2 Aug 17 - Oct 17	2,162
Q3 Nov 17 - Jan 18	1,975

Accreditations made

774 Nov-17	525 Dec-17
676 Jan-18	1,975 Quarter Total

In total, we have made

60,520

accreditations since the launch of the scheme

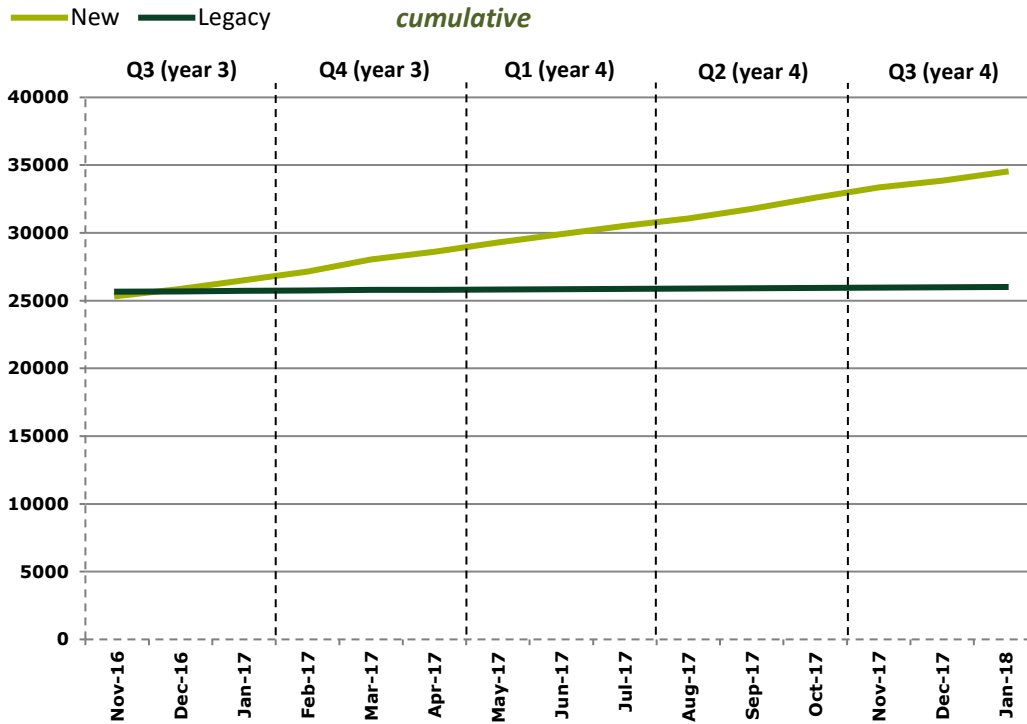
*As per the Domestic Renewable Heat Incentive regulations, our quarterly reports cover the following periods:

- Q1:** May to July
- Q2:** August to October
- Q3:** November to January
- Q4:** February to April

Legacy and new accreditations

Q3 (year 3)		Q4 (year 3)		Q1 (year 4)		Q2 (year 4)		Q3 (year 4)	
Legacy	New	Legacy	New	Legacy	New	Legacy	New	Legacy	New
92	1,738	77	2,090	64	1,906	66	2,096	73	1,902

Legacy accreditations are systems that were commissioned between 15 July 2009 when the RHI was first announced by DECC, and 9 April 2014 when the Domestic RHI scheme launched. New systems are those that were commissioned on or after 9 April 2014.



Legacy	
29	14
Nov-17	Dec-17
30	73
Jan-18	Quarter Total

New	
745	511
Nov-17	Dec-17
646	1,902
Jan-18	Quarter Total

In total, we have made

26,009

legacy accreditations since the launch of the scheme

In total, we have made

34,511

new accreditations since the launch of the scheme

Payments made to date



£138.2

million

Biomass



£69.9

million

Ground Source Heat Pump



£48.7

million

Air Source Heat Pump



£6.5

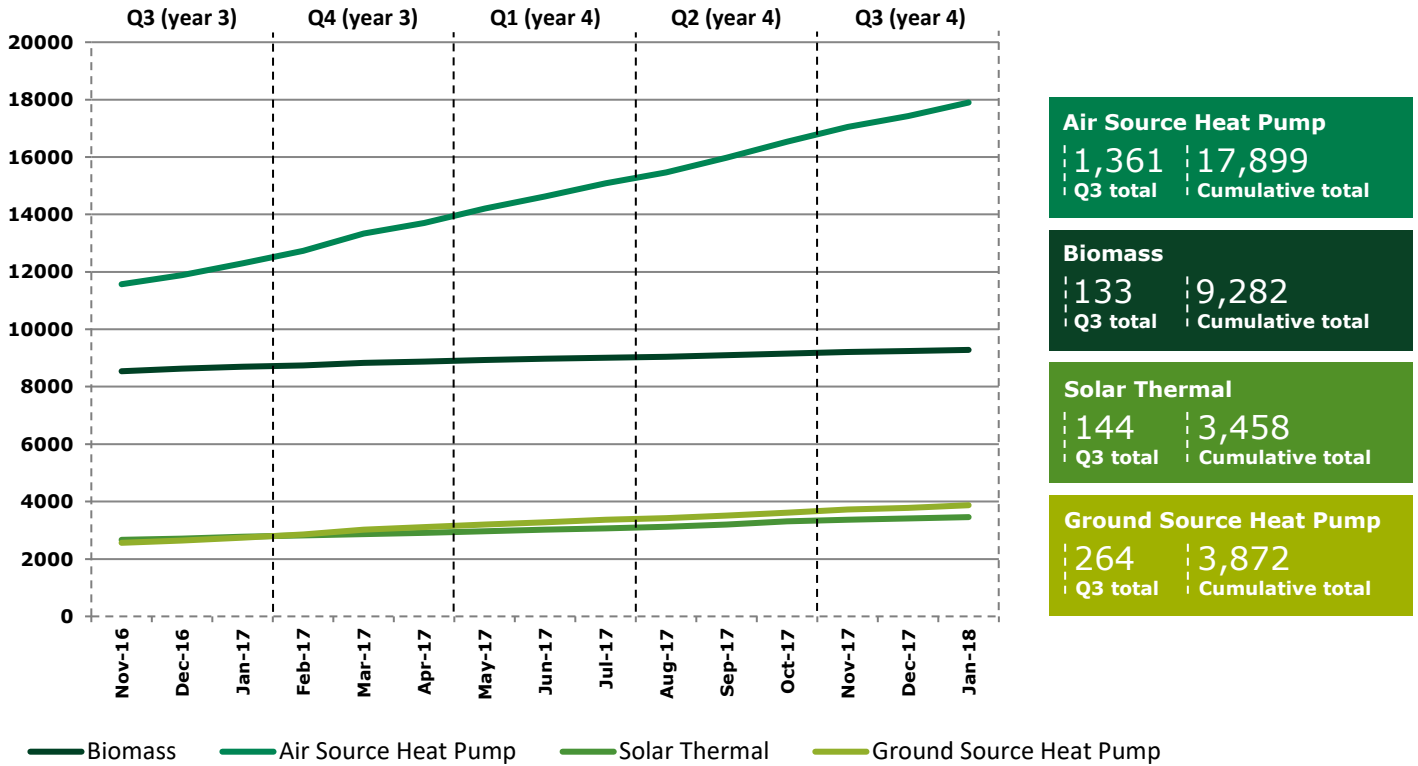
million

Solar Thermal

Accreditations by technology for new applications

The graph below shows the cumulative number of accreditations made per technology type for new systems only (systems commissioned on or after 9 April 2014). The total number of new accredited systems for Ground Source Heat Pumps has continued to exceed those for Solar Thermal systems since March. The biggest quarter on quarter increase occurred in Air Source Heat Pumps.

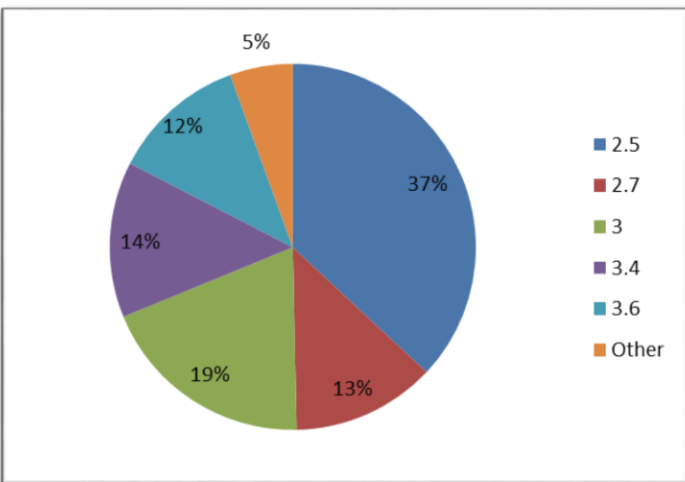
New Accreditations (cumulative)



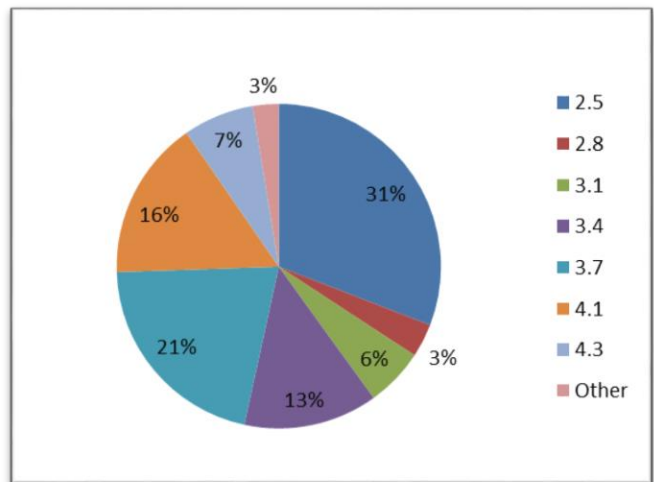
Seasonal Performance Factors (SPFs)

The SPF of a heat pump is a measure of how efficiently it is operating. The higher the SPF, the more energy efficient the system is. Only heat pumps with SPFs of 2.5 or higher can be eligible for Domestic RHI. All legacy systems were automatically assigned an SPF of 2.5, unless the applicant provided SPF calculations completed by the installer.

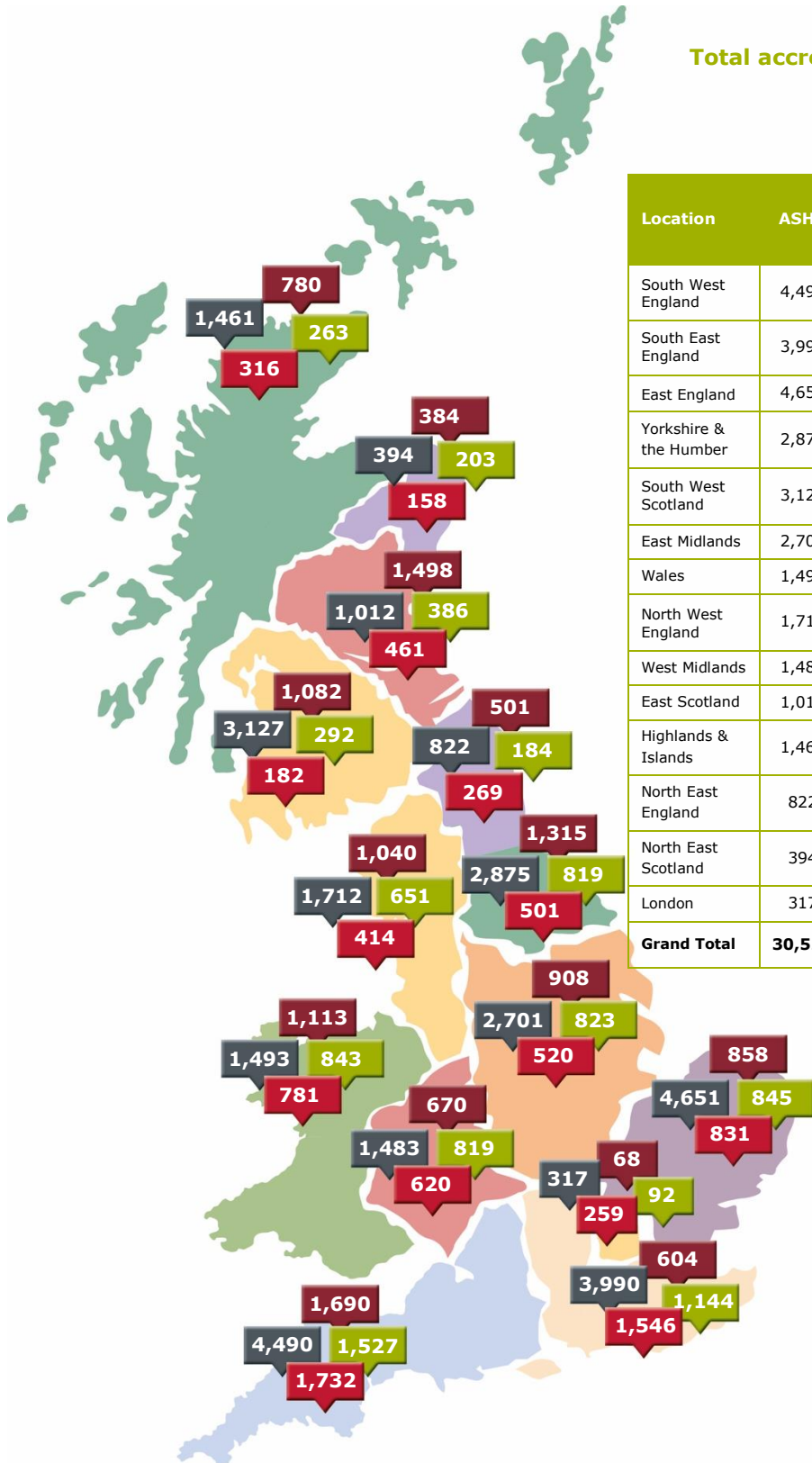
ASHP Seasonal performance factors (SPFs)



GSHP Seasonal performance factors (SPFs)

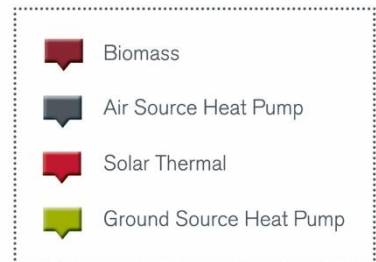


Regional distribution of accreditations



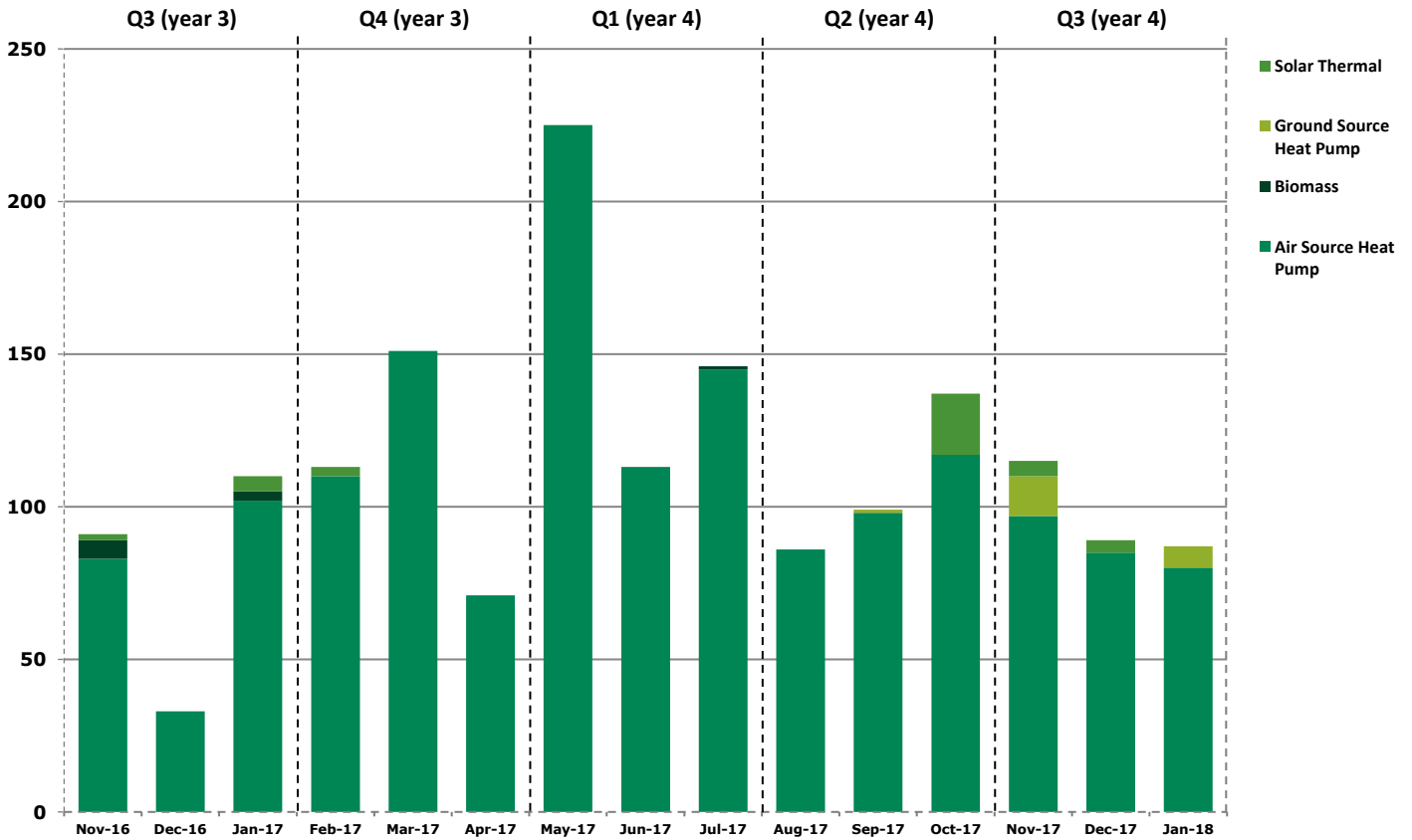
Total accreditations per region (up to Jan 2018)

Location	ASHP	Biomass	GSHP	Solar Thermal	Grand Total	% Increase from Q2
South West England	4,490	1,690	1,527	1,732	9,439	2.3
South East England	3,990	604	1,144	1,546	7,284	2.3
East England	4,651	858	845	831	7,185	2.8
Yorkshire & the Humber	2,875	1,315	819	501	5,510	3.1
South West Scotland	3,127	1,082	292	182	4,683	1.2
East Midlands	2,701	908	823	520	4,952	4.9
Wales	1,493	1,113	843	781	4,230	3.0
North West England	1,712	1,040	651	414	3,817	1.9
West Midlands	1,483	670	819	620	3,592	3.1
East Scotland	1,012	1,498	386	461	3,357	2.3
Highlands & Islands	1,461	780	263	316	2,820	3.6
North East England	822	501	184	269	1,776	1.3
North East Scotland	394	384	203	158	1,139	2.3
London	317	68	92	259	736	4.4
Grand Total	30,528	12,511	8,891	8,590	60,520	2.7

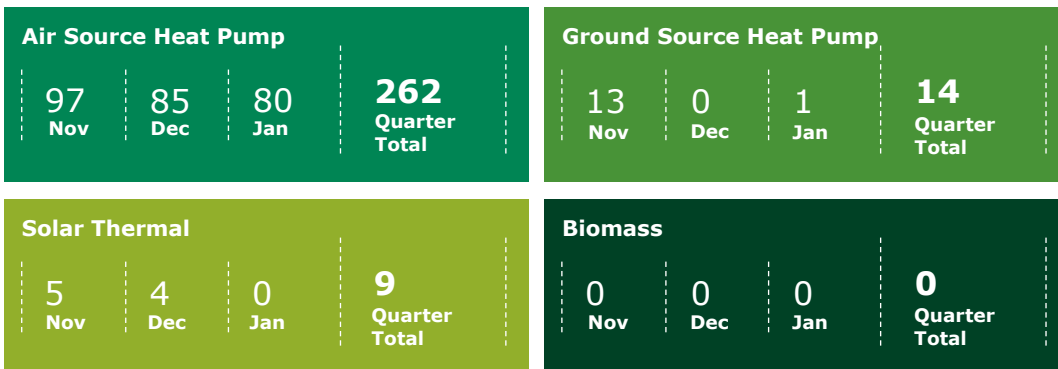


Registered Social Landlords (RSLs)

In addition to homeowners, Registered Social Landlords (RSLs) are also eligible to apply for the Domestic RHI. In the last twelve months, 1,437 accreditations have been made to RSLs, 96% (1,378) of which relate to Air Source Heat Pumps.



RSL accreditations (Q3)



We have made over
£14.8
of payments to Registered Social Landlords to date.

Our
Administration

75%

of applications submitted
last quarter received a
decision within working 30
days

87.5% Overall satisfaction score for customer survey

We estimate that accredited systems will save over

4 MT of CO₂

OVER THE LIFETIME OF THE SCHEME

**Since scheme launch, accredited
systems have generated over:**

2,409,886 MWh

OF RENEWABLE HEAT



If you have any questions about the content of this report, please let us know by emailing
DRHIResolutions@ofgem.gov.uk

