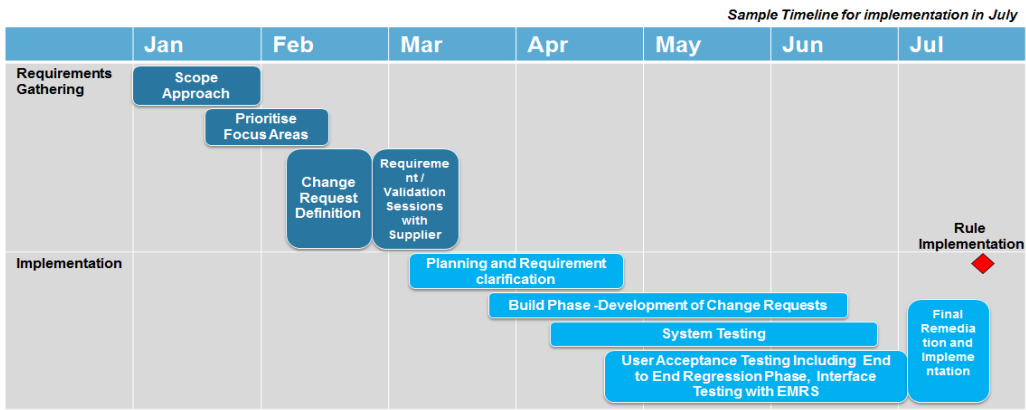


## EMR Delivery Body Change Process

In our role as the EMR Delivery Body we work with Ofgem and the other Delivery Partners to establish a prioritised list of changes which can be implemented in our systems to support the Capacity Market framework. We have committed to delivering the highest priority changes in time for the 2018 Prequalification process, where appropriate.

The changes put forward will improve the system for Applicants and/or reduce perceived barriers to entry, and as such we are happy to support these changes.

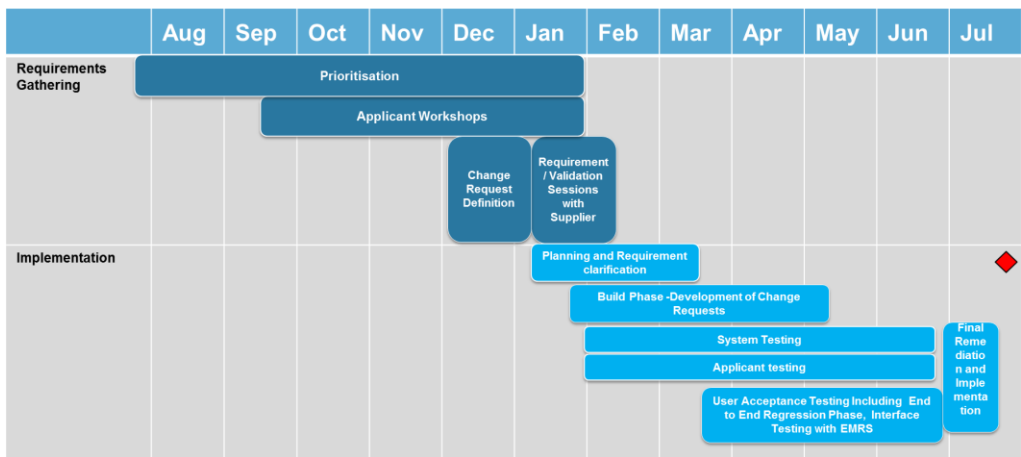
### Current timeline



The diagram above gives an example of a condensed timeline which the Delivery Body currently works to in order to implement changes before the Prequalification window opens.

An implementation timeline (such as the one below) which allows for all of these important features would take place over a longer time scale than the current one. This would also allow us to plan around significant events in the CM operation plan (avoiding Prequalification, Auction readiness and the Auctions themselves).

### Desired timeline



Delivering too many changes (with or without major benefits) may lead shortened time lines which in turn impacts the quality of the changes. A more appropriate timeline would allow us to add additional aspects which could be of benefit to CM Applicants. Such as:

- Change workshops: Applicants could be involved in the specification and design of the more complicated changes to ensure they are usable and logical
- System testing; Applicants could test and provide feedback on new system functionality so the system meets user needs and expectations.
- Interactions with other functionality; to ensure smooth processes without any defects
- User interface development: the current timeline reduces opportunities to deliver improvements to the DB system. A longer lead in would increase capacity for system development.

We look forward to looking with Ofgem and the industry to improve the current change process.