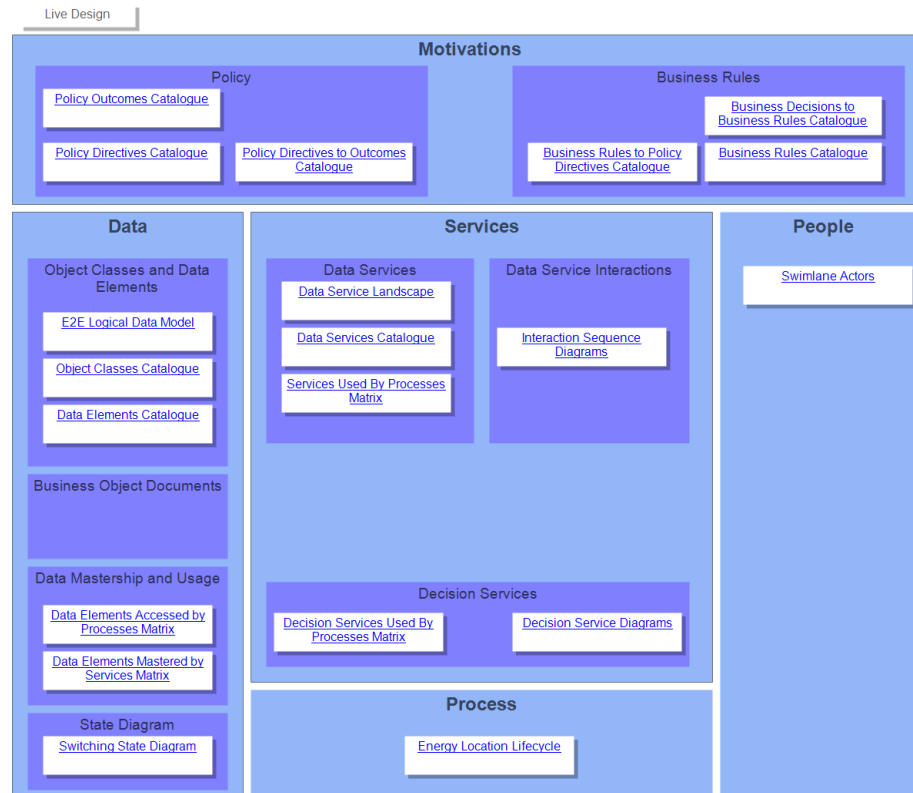


## Use of Switching Design Repository

ofgem

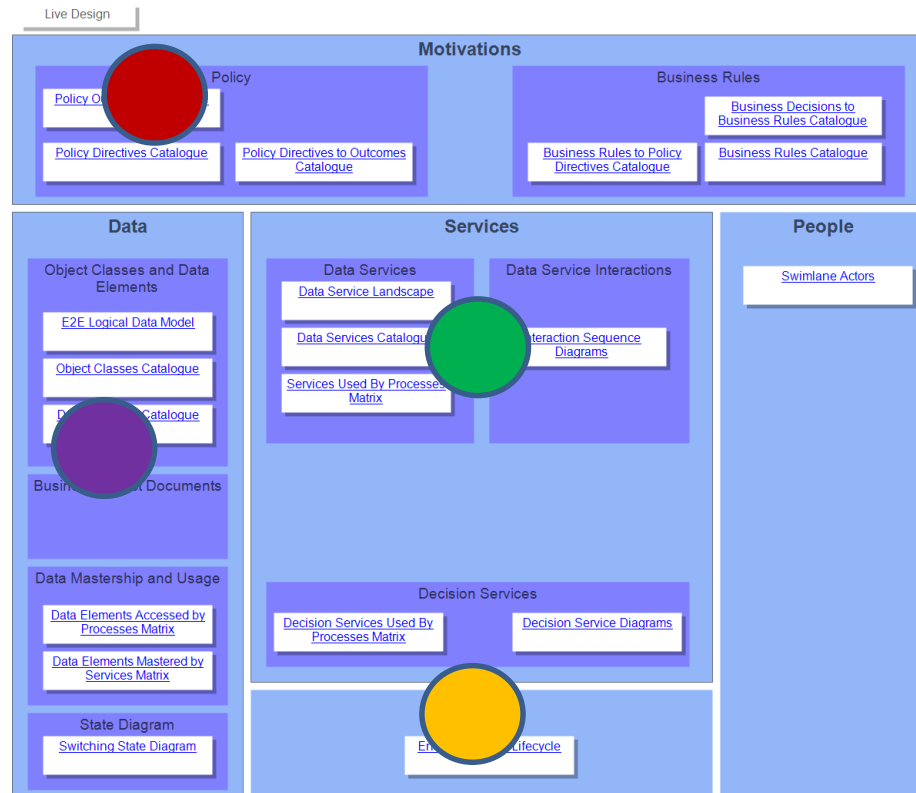
# Navigating within the Repository



This material is subject to crown copyright protection

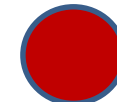
- All diagrams, catalogues and matrixes can be accessed from the main 'Navigation' diagram within the Switching Design Repository.
- This will be displayed when you log in.

# Navigating within the Repository

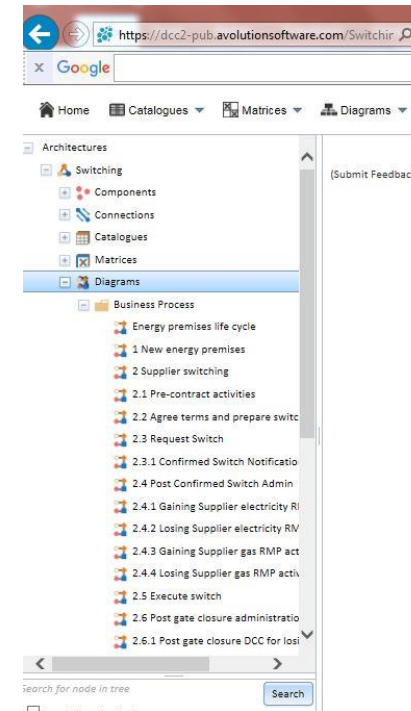
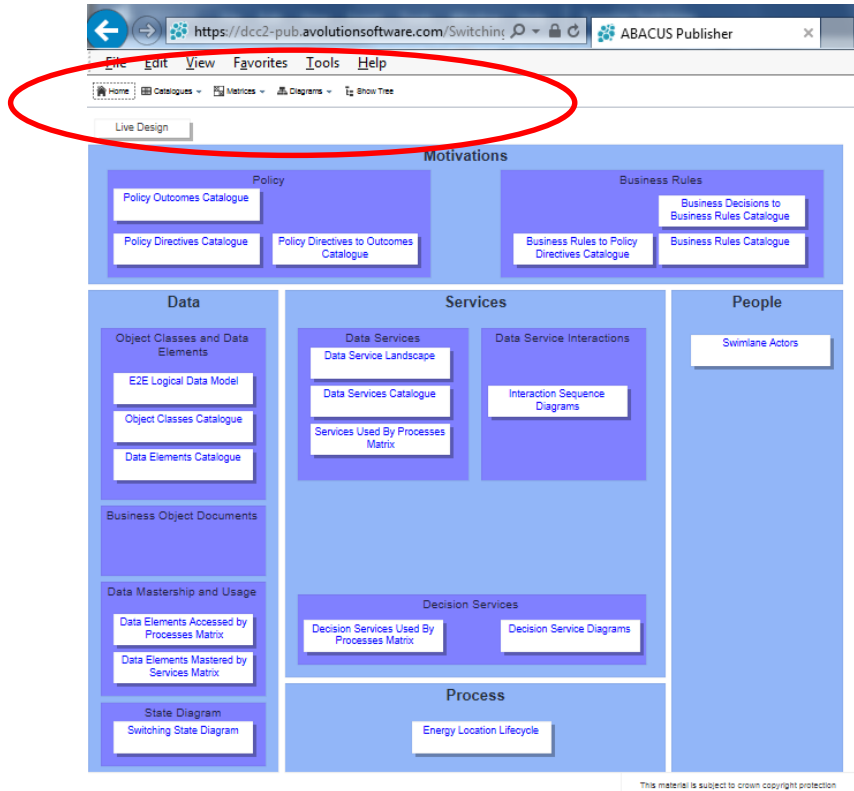


This material is subject to crown copyright protection

- Decision Service Diagrams
- Business Rule Catalogue
- Policy Directive / Outcome Catalogue
- Data Model Diagrams
- Object Class and Data Element Catalogues
- Business Object Documents
- Interaction Sequence Diagrams
- Services used by Process Matrix
- Service Landscape Diagrams
- Process Maps



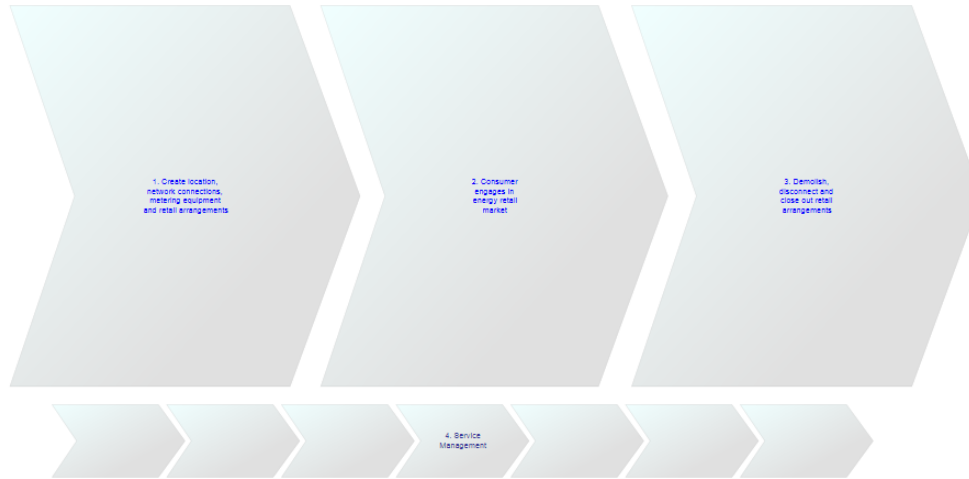
# Navigating within the Repository



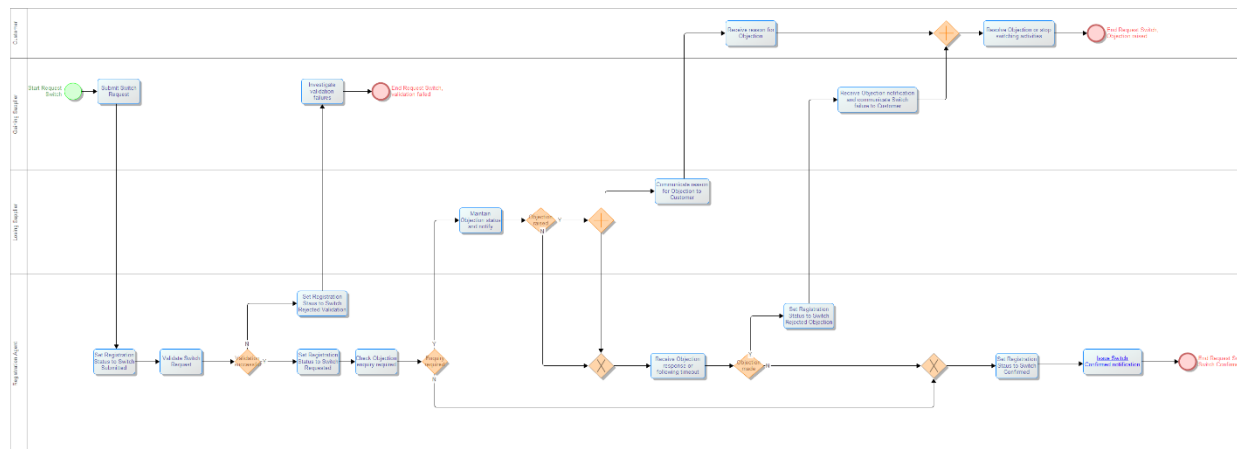
- The top drop down menu can also be utilised to navigate directly to any diagram, matrix or catalogue
- Or the explorer tree can be used to show all components within the architecture

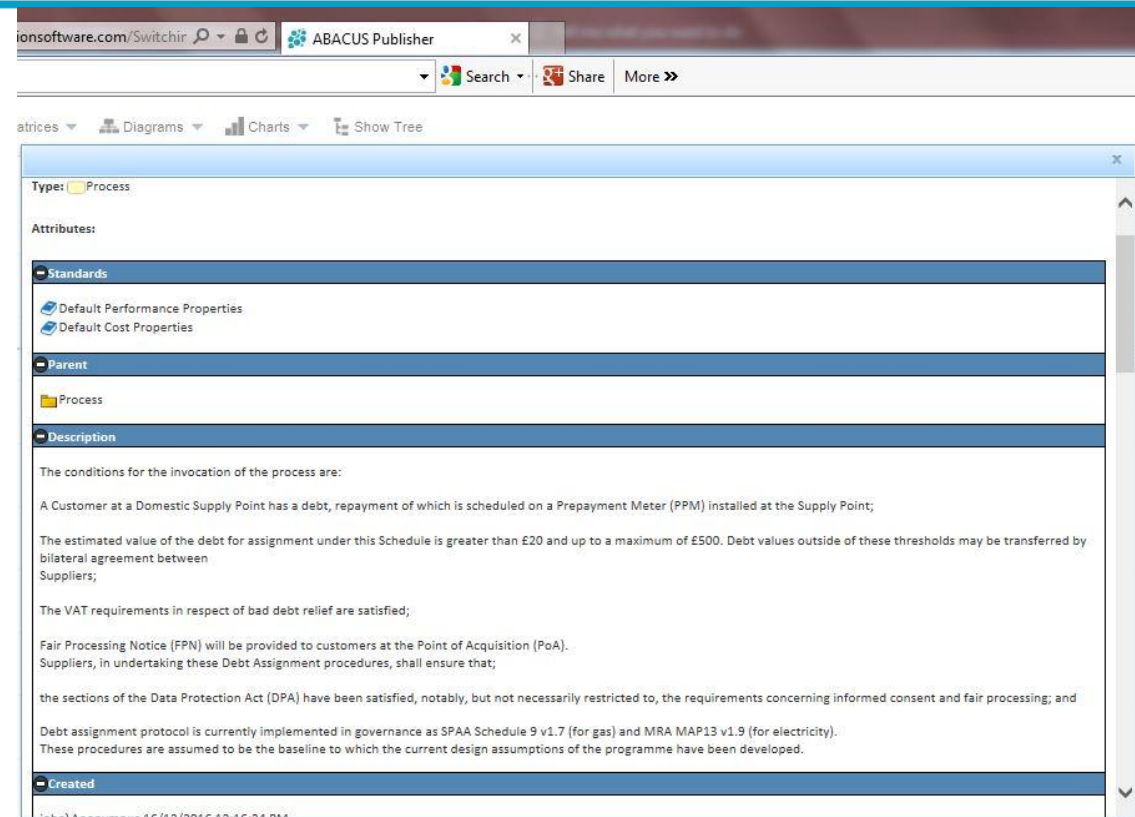
# Navigating within Process Maps

**Switching Programme**  
Energy Location Life Cycle

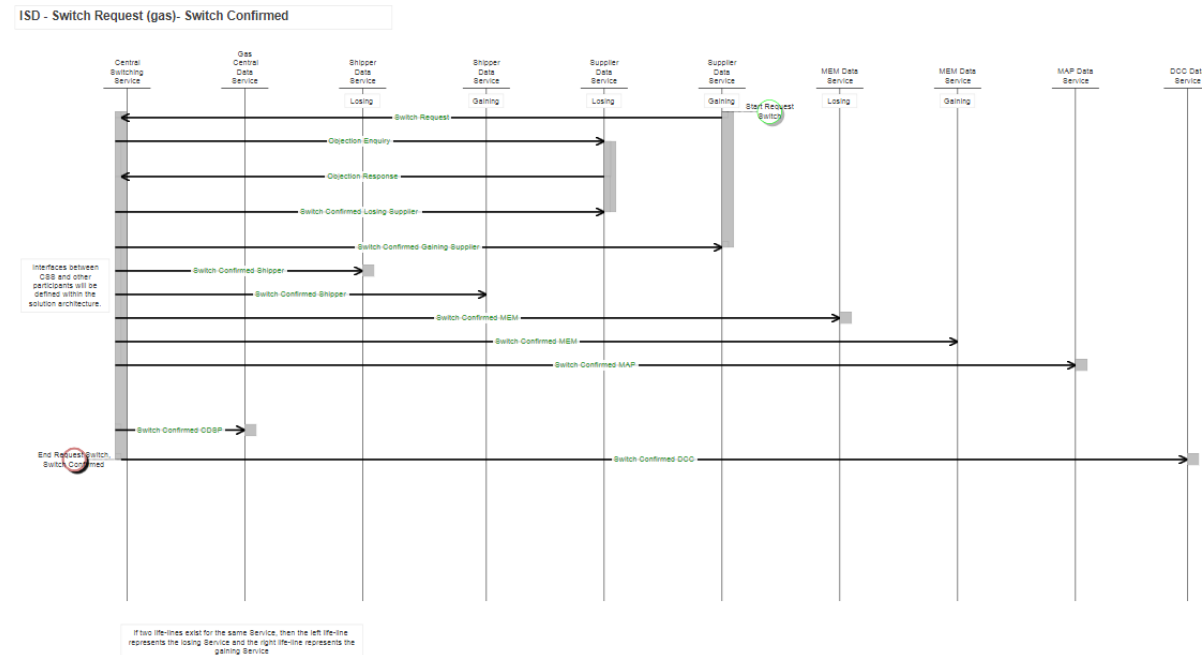


Within the process map diagrams, activity components with blue underlined text denote decomposed process maps to a lower level of detail.





- Each component, e.g. Activity, Service, Data Element contains additional information, such as a description and which diagram or catalogue it appears within.
- Viewed by clicking on the component which opens a new window.



- Sequence, in time, operates from the top to bottom of the diagram.
- ‘Life-lines’ denote the industry services, such as Energy Supplier or Meter Asset Provider.
- Arrows denote in interaction between those services, such as XML transactions or data flows.

Home Catalogues Matrices Diagrams Charts Show Tree ABACUS

(Submit Feedback)

Policy Directive

Rows: 1-28 / 28 Page 1 of 1

Name	Description
<a href="#">Cooling Off Switch</a>	A Switch Request following Cooling Off (from Supplier B to A or C) should be processed in the same manner as any other Switch
<a href="#">Registration Lifecycle Agents</a>	Agents and the Shipper whose roles which coincide with a Registration (i.e. Shipper, MOP, DC and DA) should be nominated by the Supplier at a Switch. The gaining and losing Agents should be notified of a Switch at Switch Confirmation and Switch Execution
<a href="#">Asset Lifecycle Agents</a>	Agents who do not change at a Switch (i.e. MAP and MCP) should be notified of a switch at Switch Confirmation and Switch Execution
<a href="#">Smart Meter Switch Read</a>	Both the Gaining Supplier and the Losing Supplier should access the Daily Read Log on the smart meter for Switch Date and should use the readings from the Daily Read Log as the Switch Read for settlements and billing purposes
<a href="#">Agent Data Exchanges</a>	Exchanges of data between Agents or between Agents and Suppliers or Shippers should utilise existing information flows where practical and efficient (i.e. to minimise changes to participants' systems)
<a href="#">Post Cooling-Off Grace Period</a>	For the period while Supplier B is the Registered Supplier (before or after Cooling Off), Supplier B should be responsible for billing the Customer for energy consumed. For a period of at least 30 days following Cooling Off the tariff in force should be that which was in effect prior to Cooling Off. Thereafter Supplier B may apply a different tariff (e.g. SVT)
<a href="#">Equivalent Terms</a>	If the Customer elects to switch back to Supplier A, Supplier A should be required to offer Equivalent Terms to those which the customer enjoyed prior to their switch to Supplier B
<a href="#">ES Supplier Cooperation</a>	In the event that an ES is detected the Suppliers involved must co-operate to ensure the Customer is returned to the original Supplier without detriment. The Suppliers should provide regular updates to the Customer on the progress of resolving an ES
<a href="#">Agent Notifications</a>	Notifications should supersede the current appointment / de-appointment instructions as the basis for bringing specific Meter Points into or out of the scope of a framework contract for agent services
<a href="#">Customer Contracted Agents</a>	Participants should be able to determine from Enquiry Services whether an Agent is contracted to the Supplier or the Customer
<a href="#">Post Objection Resubmission</a>	Suppliers are responsible for submitting a new Switch Request once the Objection has been resolved. The Registration Agent is not required to associate a Switch Request submitted post-resolution with an earlier one that was rejected due to an Objection being raised.
<a href="#">OFAF Election</a>	Suppliers should decide whether to allow Customers to specify OFAF or whether the application of this rule would be a Supplier prerogative
<a href="#">Erroneous MPxNs</a>	Suppliers should employ a range of triangulation techniques (including the CIN Test) to ensure that the MPxN(s) submitted on a Switch Request relates to the Premises Served of the contracted Customer

- Catalogues display Policy, Business Rules and Data Elements.
- Each component can be navigated to and will provide links to the relevant diagrams within which they are utilised or enacted.