

DEVELOPING NEW
SOLUTIONS FOR
NETWORK CONSTRAINTS

IMPLEMENTATION OF AN ACTIVE
FAULT LEVEL MANAGEMENT
SCHEME

WPDT1007

CLOSEDOWN REPORT



Report Title	:	Implementation of an active fault level management scheme: Close-Down Report
Report Status	:	FINAL
Project Ref	:	WPDT1007
Date	:	10.03.2015

Document Control		
	Name	Date
Prepared by:	Jonathan Berry	09.03.2015
Reviewed by:	Roger Hey	09.03.2015
Approved by:	Nigel Turvey	10.03.2015

Revision History		
Date	Issue	Status
28.01.2015	1	FINAL for review
17.02.2015	2	FINAL
10.03.2015	3	FINAL following Ofgem review

Contents

1	Executive Summary.....	6
2	Project Background.....	6
3	Scope and objectives	7
4	Success criteria.....	7
5	Details of the work carried out.....	8
5.1	Device Design	8
5.2	Device Testing	9
5.2.1	Preparation	9
5.2.2	Tests	10
5.2.3	Results.....	11
5.2.4	Issues.....	12
5.2.5	Next Steps and Resolutions	13
5.3	Detailed Design.....	13
5.3.1	Pulseclose Operation	13
5.3.2	Autonomous transfer of fault level data	14
5.3.3	Impedance System.....	15
5.3.4	System Protection.....	16
5.4	System Integration	16
5.4.1	Natural Disturbance detection	17
5.4.2	Parallel Operation Detection	17
5.4.3	Final Device System Testing.....	19
5.5	Site Installation.....	21
5.5.1	Site Design and Preparation	21
5.5.2	Switchgear Installation.....	21
5.5.3	Device Installation.....	22
5.5.4	Commissioning and Energisation.....	25
6	The outcomes of the Project	27
6.1	PM7000 Firmware	27
6.2	Pad-Mounted Style IntelliRupter® PulseCloser and Resistor Performance	28
6.3	Installation and Connection of AFLM	28
6.4	Control, Communications and Data Storage.....	28
6.5	AFLM Results and Accuracy.....	29
6.5.1	Reliability.....	29
6.5.2	Data Range	29
6.5.3	Modelled Data	31
6.5.4	Comparison – Monitored vs Modelled	31
6.5.5	Peak Fault Level	36
6.5.6	10ms RMS Fault Level	38
6.6	Technology Readiness Level.....	40
6.7	Increasing Network Connections and Contractual Arrangements	40

7	Performance compared to the original Project aims, objectives and success criteria	43
7.1	Integration of technologies to provide real-time fault level values	43
7.2	Installation of Active Fault Monitoring device at Primary Substation	43
7.3	Success Criteria.....	43
7.3.1	Conduct factory acceptance tests of fault level monitoring devices	43
7.3.2	Install and commission the active fault level management scheme.....	43
7.3.3	Ability to monitor fault levels in real-time to accommodate additional distributed generation without the need for large-scale network reinforcement	43
7.3.4	Integrate distributed generation into the network more quickly	43
7.3.5	Development of an engineering interface and control methodology.....	44
7.3.6	New contractual arrangements to maximise generation connectivity....	44
8	Required modifications to the planned approach during the course of the Project ..	45
9	Significant variance in expected costs	46
10	Lessons learnt for future Innovation Projects	47
10.1	Device Control	47
10.2	Network Impact Analysis.....	47
10.3	Technology and System Integration Testing	47
10.4	Network Modelling Requirements.....	48
10.5	Team Structure	48
11	Planned implementation	49
12	Facilitate Replication.....	49
13	Contact details	50
14	Appendices.....	50

DISCLAIMER

Neither WPD, nor any person acting on its behalf, makes any warranty, express or implied, with respect to the use of any information, method or process disclosed in this document or that such use may not infringe the rights of any third party or assumes any liabilities with respect to the use of, or for damage resulting in any way from the use of, any information, apparatus, method or process disclosed in the document.

© Western Power Distribution 2015

No part of this publication may be reproduced, stored in a retrieval system or transmitted, in any form or by any means electronic, mechanical, photocopying, recording or otherwise, without the written permission of the Future Networks Manager, Western Power Distribution, Herald Way, Pegasus Business Park, Castle Donington. DE74 2TU. Telephone +44 (0) 1332 827446. E-mail WPDInnovation@westernpower.co.uk

Glossary

Abbreviation	Term
AFLM	Active Fault Level Monitor
CBD	Central Business District
CT	Current Transformer
DG	Distributed Generation
FAT	Factory Acceptance Testing
GB	Great Britain
HV	High Voltage
IEC	International Electrotechnical Commission
IFI	Innovation Funding Incentive
IPR	Intellectual Property Rights
NER	Neutral Earthing Resistor
NMS	Network Management System
ORL	Outram Research Limited
PB	Parsons Brinckerhoff
PMIR	Pad Mounted IntelliRupter
PQ	Power Quality
SAT	Site Acceptance Testing
SIT	System Integration Testing
SPEN	Scottish Power Energy Networks
THD	Total Harmonic Distortion
VT	Voltage Transformer
WPD	Western Power Distribution

1 Executive Summary

This report details the approach taken in seeking to develop, test and install an Active Fault Level Monitor (AFLM) as part of this LCNF Tier-1 project. The project started in February 2012 and its aims were split in to two phases as follows:

- Phase 1 - Develop the AFLM product and carry out Factory Acceptance Testing (FAT) in a controlled laboratory environment; and
- Phase 2 – Installation of an AFLM device at a Primary substation involving Site Acceptance Testing (SAT), commissioning, open-loop analysis and potentially closed loop analysis of the active fault level management scheme within an 11kV substation.

The project was completed in December 2014 following the successful implementation of an AFLM device in to Ladywood Primary substation, Birmingham. This document reports the project's background, details of the work carried out to facilitate the successful implementation of the device, findings and learning outcomes to be taken forwards to allow the device's integration as a business as usual initiative.

The original project budget was £710k with the project costs at closedown at £690.3k.

2 Project Background

The accommodation of distributed generation within 11kV networks may be limited at present due to fault level issues. The implementation of an active fault level management scheme has the potential to defer and/or avoid costly network reinforcement, whilst increasing network security. This facilitates the installation of distributed generation close to large demand centres, which has the potential to reduce electrical distribution losses and increase the efficiency of the Distribution System.

The project aims to expedite distributed generation connections through monitoring fault level conditions in real-time. This will also allow a practical understanding of how close simulated fault levels are to actual values. Real-time fault level monitoring will be used to manage the connection of a distributed generator to increase the power supplied from renewable energy resources and to manage the fault level to avoid exceeding equipment ratings.

The project will be implemented in two phases: Phase 1 will involve the integration and factory acceptance testing of the fault level monitoring devices. Phase 2 will involve the implementation of the fault level monitoring devices within a field trial network to manage the connection of a distributed generator, firstly through open-loop control and then through closed loop control.

3 Scope and objectives

The primary objective of the project is to expedite the connection of a new combined heat and power (CHP) plant.

The project will encompass an 11kV substation area and associated distribution network so as to monitor, actively, the fault level. This will facilitate the management of the new CHP plant connection. The active management solution is required as an interim measure whilst the two low impedance 132 / 11 kV transformers at the substation are replaced with higher impedance transformers, removing any potential fault level issues.

4 Success criteria

The success criteria detailed below were identified at the point of project registration. These success criteria were be used to determine the positive and negative learning throughout this report.

1. Conduct factory acceptance tests of fault level monitoring device;
2. Install and commission the active fault level management scheme;
3. Ability to monitor fault levels in real-time to accommodate additional distributed generation without the need for large-scale network reinforcement;
4. Integrate distributed generation into the network more quickly;
5. Development of an engineering interface and control methodology; and
6. New contractual arrangements to maximise generation connectivity.

5 Details of the work carried out

5.1 Device Design

The initial objective of the project was to develop a suitable device that was first ready for full factory acceptance testing and then on-site installation. The AFLM device was to be developed through the integration of two existing products, S&C Electric's Pad-Mounted Style IntelliRupter® PulseCloser and Outram Research Limited's (ORL) PM7000-FLM. A brief overview of the two products is provided below:

- **S&C Electric's Pad-Mounted Style IntelliRupter® PulseCloser** – This is an intelligent 11kV auto-recloser, which uses point-on-wave technology to minimise the effect of reclosing a healthy network on to a non-healthy (faulted) system. It has control over the connection to each of the three phases independently; and
- **ORL's PM7000-FLM** – This is a device that was originally developed as part of a Scottish Power Energy Networks (SPEN) Innovation Funding Incentive (IFI) project. It is an extension to a commercially available Power Quality (PQ) monitor that is able to extrapolate changes in the system's voltage and current to calculate the fault level of the connected system when natural network disturbances occur.

Preparatory work had been undertaken, prior to the registration of the project, to understand the device requirements and feasibility of the creation of the AFLM. The fundamental operation of the device is that the Pad-Mounted Style IntelliRupter® PulseCloser creates a network disturbance (*termed artificial*), which provides a spike in current on the network and a small drop in voltage for a short period of time. This disturbance is then captured by the PM7000-FLM and a fault level value for both Peak and RMS for the electrical system it is connected.

Following registration, the concept design needed to be developed to a stage where it was ready to be tested in a High Voltage (HV) laboratory. This was carried out through a series of face-to-face meetings between Western Power Distribution (WPD), the device providers S&C and ORL and Parsons Brinckerhoff (PB) who provided engineering consultancy support throughout the project.

The key requirement was for the Pad-Mounted Style IntelliRupter® PulseCloser to deliver a pulse of current and change of voltage that was useable by the PM7000-FLM to deliver an accurate representation of the system fault level, whilst not causing any disturbance to connected customers of the system. A pulse of current is generated by the Pad-Mounted Style IntelliRupter® PulseCloser through its ability to operate its three poles (one per phase) independently. This means that the device can close one of its poles and pulse another for a period of time to create a short-term connection between two phases. Originally it was planned that the two phases would close via a solid connection (with nearly zero impedance), however, when modelled, even with the effect of point-on-wave pulseclosing the current generated, albeit for a very short period of time (maximum 10ms), would be 50% of the fault current that would be generated for the inception of a fault. Therefore, an

immediate learning point for the project was that a suitable impedance between the two pulseclosing phases was required to minimise the current seen on the 11kV system.

A model was created to understand what a suitable impedance would be to ensure that whilst producing a disturbance on the network it would not cause any customers connected to the network any PQ or other issues. For the purpose of the laboratory testing this was decided to be 20Ω , which would be in the form of an inductor (reactance). This 20Ω inductance, on an 11kV system, would create a current of 550A for the time it was connected to the system, equivalent to a 10MVA load.

5.2 Device Testing

As this device was the first of its kind it was necessary to test the complete device in a laboratory, to prove the accuracy of the device and both the mechanical and electrical strength prior to installation, commissioning and energisation on WPD's 11kV network.

A laboratory that can provide 11,000 volts at the same time as current in excess of 30,000A was required. Many laboratories exist that can provide significant current or voltage but not simultaneously. S&C, at their headquarters in Chicago, have an accredited laboratory that has the required capability; therefore this was chosen as the test facility. Other facilities with the required capabilities were explored, such as IPH in Berlin and KEMA in Arnhem, however, due to the timescales to deliver the project these options became unviable.

5.2.1 Preparation

In order to replicate the on-site conditions as closely as possible, WPD standard current and voltage measurement instruments, that will be installed in the equipment on-site, were shipped to the Chicago Laboratory. This equipment was:

- Voltage transformers (VTs) – 11000/110v Class 3P 50VA; and
- Current Transformers (CTs) – 2000/5A 5P20 25VA.

It was also ensured that the tests were carried out at 50Hz, which is standard to the UK.

A detailed test procedure was developed between WPD, PB and S&C Electric's laboratory team to ensure what was required was firstly deliverable and that the tests could be completed in the allotted time. The schedule comprised a variety of tests at different Peak and RMS fault levels, some high (above 10kA) and some low (below 10kA), a variety of X/R ratios and with tests with either a load connected or disconnected. These different laboratory conditions allow a close representation of the different network conditions that can be seen on the 11kV network in Birmingham and Great Britain (GB).

5.2.2 Tests

A series of tests were outlined, as described above, with a specific Peak and RMS fault level, X/R ratio and whether a 200A (3.8MVA at 11kV) load would be connected. An extract of the testing schedule is shown in Figure 5-1.

Operation	3 ϕ Test kv	Frequency (Hz)	Time of Closing (Cycles)					Time of Closing (ms)					
			S ₁	CB ₁	S ₂	CB ₂ ⁺	MS ₁	S ₁	CB ₁	S ₂	CB ₂ ⁺	MS ₁	
1	Prospective - 5 kA, X/R=31	11	50	Never	Never	<0	<0	0*	Never	Never	<0	<0	0*
2	5 kA, X/R=31 + 200 A Load + IR-Shorted			<0	16	Never	15	0**	<0	320	Never	300	0**
3	5 kA, X/R=31 + 200 A Load + IR-20 Ω			Never	16	Never	15	0**	Never	320	Never	300	0**
4	5 kA, X/R=31 + No Load + IR-Shorted			<0	15	Never	Never	0**	<0	300	Never	Never	0**
5	5 kA, X/R=31 + No Load + IR-20 Ω			Never	15	Never	Never	0**	Never	300	Never	Never	0**
6	Prospective - 5 kA, X/R=10			Never	Never	<0	<0	0*	Never	Never	<0	<0	0*
7	5 kA, X/R=10 + 200 A Load + IR-Shorted			<0	16	Never	15	0**	<0	320	Never	300	0**
8	5 kA, X/R=10 + 200 A Load + IR-20 Ω			Never	16	Never	15	0**	Never	320	Never	300	0**
9	5 kA, X/R=10 + No Load + IR-Shorted			<0	15	Never	Never	0**	<0	300	Never	Never	0**
10	5 kA, X/R=10 + No Load + IR-20 Ω			Never	15	Never	Never	0**	Never	300	Never	Never	0**
11	Prospective - 13.6 kA, X/R=31			Never	Never	<0	<0	0*	Never	Never	<0	<0	0*
12	13.6 kA, X/R=31 + 200 A Load + IR-Shorted			<0	16	Never	15	0**	<0	320	Never	300	0**
13	13.6 kA, X/R=31 + 200 A Load + IR-20 Ω			Never	16	Never	15	0**	Never	320	Never	300	0**
14	13.6 kA, X/R=31 + No Load + IR-Shorted			<0	15	Never	Never	0**	<0	300	Never	Never	0**
15	13.6 kA, X/R=31 + No Load + IR-20 Ω			Never	15	Never	Never	0**	Never	300	Never	Never	0**
16	Prospective - 13.6 kA, X/R=10			Never	Never	<0	<0	0*	Never	Never	<0	<0	0*
17	13.6 kA, X/R=10 + 200 A Load + IR-Shorted			<0	16	Never	15	0**	<0	320	Never	300	0**
18	13.6 kA, X/R=10 + 200 A Load + IR-20 Ω			Never	16	Never	15	0**	Never	320	Never	300	0**
19	13.6 kA, X/R=10 + No Load + IR-Shorted			<0	15	Never	Never	0**	<0	300	Never	Never	0**
20	13.6 kA, X/R=10 + No Load + IR-20 Ω			Never	15	Never	Never	0**	Never	300	Never	Never	0**

- * Close making switch to yield maximum asymmetry
- ** Random closing of making switch near time t=0
- + Load not to be energized for more than 28 cycles

Figure 5-1: Extract of Testing Schedule

Before the testing of the AFLM took place a “bolted” fault was carried out to measure the actual Peak and RMS fault levels as a point of reference. This then acted as a means to determine the accuracy of the AFLM.

The laboratory network arrangement is illustrated in Figure 5-2.

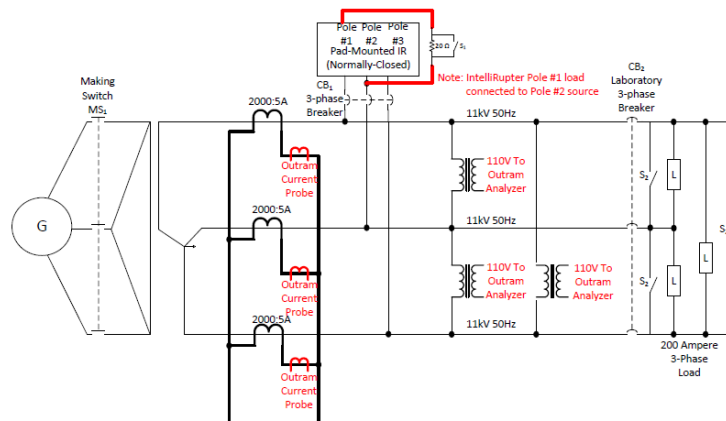


Figure 5-2: Laboratory network arrangement

Explanation of switches and circuit breakers:

- MS1 – Generator Switch (only to be closed once operating frequency is achieved);
- CB1 – Circuit Breaker to close the IntelliRupter® on to the system;
- S1 – Bypass Switch to determine if a resistance is added to the “disturbance”;
- CB2 – Circuit Breaker to close Load (L) on to the system; and
- S2 – Switch to short the system.

As referenced in Figure 5-1, a series of tests, with varying prospective fault levels and X/R ratios, simulating differing network scenarios, were performed.

5.2.3 Results

The results of the tests carried out in Section 5.2.2 are detailed in Figure 5-3.

X/R Ratio (No Unit)	Switching Operation (No Unit)	Measured Fault Current		Predicted Fault Current		% Difference		Maximum Voltage (kV)	Minimum Voltage (kV)	Voltage fluctuation (%)
		Peak (kA)	RMS @ 10ms (kA)	Peak (kA)	RMS @ 10ms (kA)	Peak (kA)	RMS @ 10ms (kA)			
30	With 200A load connected	13.83	5.10	13.37	4.87	3.33%	4.46%	6.417	6.353	1.00%
30	Without 200A load connected	13.83	5.10	13.50	5.24	2.37%	-2.70%	6.447	6.384	0.98%
13.3	With 200A load connected	12.88	5.09	13.27	4.95	-2.99%	2.79%	6.289	6.193	1.53%
13.3	Without 200A load connected	12.88	5.09	13.38	5.03	-3.88%	1.32%	6.453	6.298	2.40%
23	With 200A load connected	31.34	13.10	30.40	13.50	3.01%	-3.38%	6.298	6.150	2.35%
23	Without 200A load connected	31.34	13.10	31.02	12.87	1.01%	1.74%	6.451	6.273	2.76%

Figure 5-3: Laboratory Test Results

A selection of test results summarised above of both the Peak and RMS fault levels can be seen to be within 5% accuracy of the reference bolted fault. This was the original aim of the project, to create a device that is suitable for a variety of distribution network arrangements, illustrated by the different loads, X/R ratios and prospective fault levels.

Other considerations for the device testing, in preparation for its connection on to the 11kV system in Birmingham, was the potential for it to, whilst performing its fault level monitoring function, disturb customers connected to the system through voltage flicker or harmonic distortions. Therefore, in order to ensure that the AFLM device complies with power quality standards for voltage fluctuations (ER P28) and harmonic distortion (ER G5/4), the waveforms during test were observed and analysed. As shown in Figure 5-3, the greatest voltage step change was 2.76% for the system conditions with a measured 10ms Peak fault level of 31.34kA without the 200A load connected. ER P28 prescribes a general limit of 3% on the allowable magnitude of voltage changes. The average percentage voltage deviation was 1.84% for the test cases considered.

The THD limit on the 11kV network is 4% averaged over a 10 minute period. Figure 5-4 shows the change in total harmonic distortion (THD) varies between instantaneous values of 2.2% and 4.7% for the a-b and c-b phases of the network, respectively. Therefore, due to the pulseclosing on the network lasting 5ms, when measured over a 10 minute period this THD will not be detrimental to the network or connected customers.

A paper was produced for CIREC, Stockholm 2013, detailing the process and learning from the AFLM device testing. The full paper and poster are provided in Appendix B1 and B2 respectively.

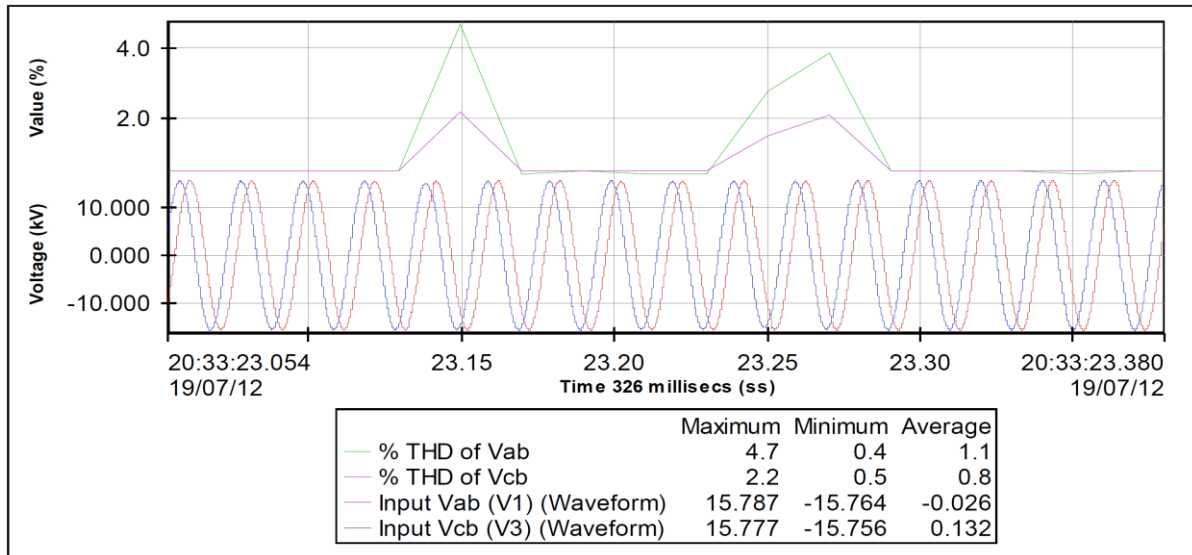


Figure 5-4: Total harmonic distortion of the wave form

5.2.4 Issues

The Pad-Mounted Style IntelliRupter® PulseCloser is, in its traditional operation, designed to determine between load and fault current following the Pad-Mounted Style IntelliRupter® PulseCloser opening under a fault condition to understand whether the disconnected part of the system can be re-energised, i.e. detect that the fault is no longer present and it is safe to re-close the system. This operation meant that during the testing of the complete device, due to the initial 20Ω impedance being resistive, it saw this, during its pulseclose operation, as being a connected load and that the system could be closed, therefore locking the phases closed. In order to remove this unwanted performance of the Pad-Mounted Style IntelliRupter® PulseCloser an inductive impedance, at the same value of 20Ω, was used. This meant that when the device performed its pulseclosing operation it detected a faulted system, due to the phase shift induced by the inductive impedance. All tests were then carried out utilising the 20Ω inductance.

Another issue encountered during the testing of the AFLM device was induced magnetic flux of the measurement CTs for the AFLM. The CTs used are the standard CTs that are installed in WPD's 11kV switchgear to provide protection measurement information on the system. When operating on the system there is usually a constant current passed through the CTs and for the instance of a fault the large current seen is for a small period of time, compared to the time it sees general load current. However, during the testing of the AFLM the CTs were carrying no current, except for large fault currents during the test operations. This large current, in some of the CTs, created a significant magnetic flux that generated a substantial phase shift, meaning that they had to be switched for a non-affected CT.

5.2.5 Next Steps and Resolutions

Following the successful testing of the AFLM device, where the integration of the Pad-Mounted Style IntelliRupter® PulseCloser pulseclosing operation and the detection via the PM7000 was proven and the fault levels were extrapolated to the required accuracy, the next step was to design a full system that could send the fault level values, in real time, autonomously to a required destination (WPD's network management system or other).

The issue relating to the impedance used to dampen the effect of the Pad-Mounted Style IntelliRupter® PulseCloser pulseclosing between two phases on the system having to be an inductance for the tests needed to be considered and resolved. This is explained in detail within Section 5.3.

A key learning point from the testing was that during the bolted faults, to act as a reference for the monitored fault levels, the AFLM measurement CTs should be disconnected from the test network to ensure that no magnetising flux is induced.

5.3 Detailed Design

This section details the work carried out following the testing on the device in preparation for the on-site installation. Four key elements of the detailed design are:

- Control of the pulseclosing AFLM operation;
- Transfer fault level value to a remote destination autonomously;
- Design and manufacture of a suitable impedance unit; and
- Design the protection of the system against mal operation of the AFLM.

5.3.1 Pulseclose Operation

In order to maximise the lifetime of the Pad-Mounted Style IntelliRupter® PulseCloser, as it is a mechanical device, and to ensure that one phase of the system is not overstressed it must be designed that every time a pulse close operation happens it is between two different phases. The phase rotation is to be:

- R – Y;
- Y – B; and
- R – B.

These operations are illustrated in Figure 5-5.

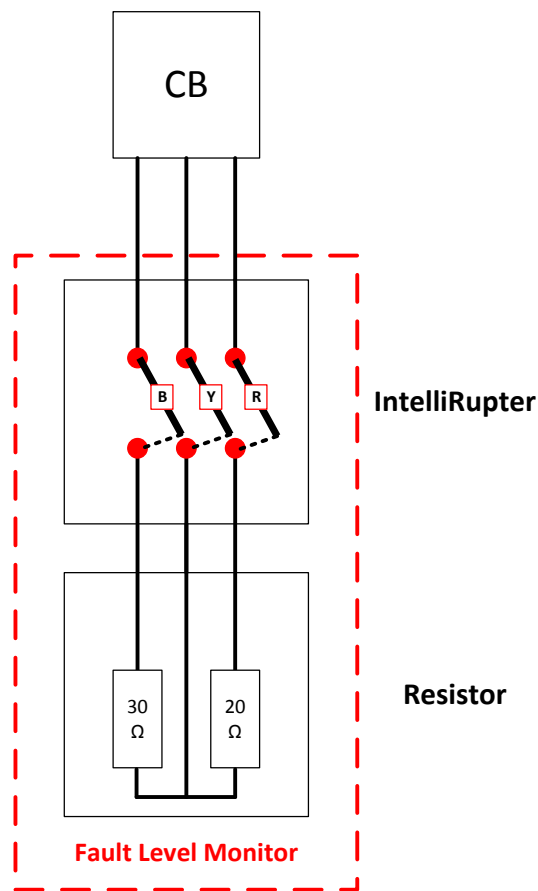


Figure 5-5: AFLM Device Phase Operation

Several options for the pulseclosing control were investigated, with the optimal two being the amendment of the existing S&C Electric Pad-Mounted Style IntelliRupter® PulseCloser software, or to add an additional system to provide the control. In order to have greater control and visibility of the system an external system was decided upon. This system was developed by Nortech Management Ltd, where through the use of their, previously established, Envoy device, software was developed to be able to control the pulseclose operation, both in terms of the two phases that pulseclose and the interval between which these operations take place. In order to facilitate this, a fibre optic connection between the Pad-Mounted Style IntelliRupter® PulseCloser and Envoy device was developed. The use of a fibre optic cable ensured that there was no electrical connection between the Pad-Mounted Style IntelliRupter® PulseCloser and the AFLM control unit.

5.3.2 Autonomous transfer of fault level data

As discussed in Section 5.3.1, Nortech Management Ltd was utilised to provide the Pad-Mounted Style IntelliRupter® PulseCloser pulseclose control. It was decided that, due to Nortech carrying out the pulseclose operation package, they would be used to provide the transfer of data from on site to a database system remotely. This was carried out by utilising WPD's existing iHost system to store the AFLM data. This data was required to be provided in real-time to allow remote access to the data for analysis.

5.3.3 Impedance System

In order to create a device that can be installed on to the 11kV system, in Birmingham, the current created when two phases are pulseclosed via the Pad-Mounted Style IntelliRupter® PulseCloser were dampened through suitable impedance. As explained in Section 5.2.4 an inductance had to be used to allow the successful testing of the device, however, an inductor installation on site is not suitable, due to the size, cost and electrical requirements relating to their installation on site. Therefore, a resolution to the issue of the Pad-Mounted Style IntelliRupter® PulseCloser understanding a resistive impedance to be a load current on the system was required. Following discussions with the software developers within S&C Electric, it was determined that the software could be developed where it did not investigate the type of current that it sees through the Pad-Mounted Style IntelliRupter® PulseCloser under pulseclose operations, meaning that a suitable resistive impedance could be used.

Following S&C Electric's commitment to develop the Pad-Mounted Style IntelliRupter® PulseCloser software a suitable resistor for installation was investigated. Many companies provide resistors for the installation on distribution and/or transmission networks. Often DNOs install Neutral Earthing Resistors (NER) on to their 11kV network, at a Primary substation, to limit the earth fault current, however, these devices are single phase units and unsuitable for the AFLM application. A unit was required that could limit the current through the AFLM to a suitable value, which following investigation, was decided to be 550A, which equates to 10MVA at 11kV. This relates to 20Ω of resistive impedance:

$$Z = \frac{V}{I} = \frac{11000}{550} = 20\Omega$$

Although a 20Ω resistance was deemed appropriate, as this was a trial it was decided that other resistive values should be investigated that further limit the current seen by the system to minimise the potential visibility to connected customers. The following values were selected:

- 30Ω (365A); and
- 50Ω (220A).

A manufacturer, HVR International, who produces ceramic resistors for many power systems applications, was approached to produce a suitable resistor. The detail of the resistor, contained within the rating plate, is provided in Appendix D – Resistor Rating Plate.

5.3.4 System Protection

As the complete system was now understood, in terms of the control methodology, the data capture element and the magnitude of the current created under an AFLM operation, it was now required to appropriately protect the wider 11kV system from a mal operation of the AFLM device. Some of these potential mal operations are:

- Pulseclose operation fails and the two phases remaining connected for an extended period of time;
- The resistor degrades or fails and the magnitude of the current increases; or
- The control system fails and an unexpected operation is carried out, such as three phases pulseclosing simultaneously.

As discussed in Section 5.3.3 the current through the device will range between 220A and 550A for a period of less than 10ms. In order to protect the 11kV from any mal operation, the most onerous condition was considered, which is that the 220A (50Ω) current remains on the 11kV system longer than has been designed. In order to mitigate against this having any wider system impacts a definite time protection setting of 90A 0.3s was applied. This means that if the system were to see 90A for a period of 0.3s, thirty times greater the length of time than expected as a maximum, then a circuit breaker would open and disconnect the AFLM device from the wider system.

5.4 System Integration

Following the final design of the device to calculate the system fault level for the instance of an artificial disturbance, generated by the AFLM, it was decided that additional parameters were required to be understood. These parameters were to enable greater utilisation of the AFLM device and its data. The additional parameters were:

- Fault level data generated from natural disturbances on the 11kV system where the AFLM is connected; and
- An indication of whether the substation was operating in parallel or radial configuration.

Through the addition of these parameters it would mean that the AFLM device has greater applicability for the installation on to all 11kV systems at a primary substation.

5.4.1 Natural Disturbance detection

In order to maximise the utilisation of the existing assets, a system whereby both the natural and artificial disturbances can be detected and extrapolated in a single PM7000-FLM unit was required. The PM7000-FLM developer, ORL, undertook this activity.

The PM7000-FLM device has four current input contacts, in normal AFLM operation only two are used, one for the red phase and the other for the blue phase. This meant the device already had the capacity to take the required number of current inputs:

- Red phase AFLM connection;
- Blue phase AFLM connection;
- Red phase AFLM Transformer Incomer connection; and
- Blue phase AFLM Transformer Incomer connection.

The transformer incomer currents were utilised for the natural disturbance monitoring detection as this circuit breaker would be subjected to all faults on the connected 11kV system, whereas if it was connected to an 11kV feeder connection, a disturbance would have been required on that particular feeder for an accurate natural disturbance value to be recorded.

This arrangement is illustrated in Appendix E – System Architecture Diagram.

5.4.2 Parallel Operation Detection

The configuration of the network is critical to the value of fault level on the system. A significant element of this is whether the substation is running in parallel operation or not, where parallel operation is defined as two transformers, or transformer windings, being connected together, which will in turn reduce the upstream impedance of the system and cause the fault level to increase. This paralleling can be achieved either at the substation, through the configuration of 11kV circuit breakers or remotely through the connection of 11kV circuits remote to the substation, however, having the same paralleling effect.

In order to understand this effect on the system, for all situations, a development of the PM7000-FLM was required. This work was undertaken to understand specific detail of the electrical flow to differentiate when the network is operating in parallel or not. When the network is operating in parallel configuration it is usual that the current, voltage and power from the two distinct transformers will match each other, along with other characteristics like harmonics.

The parallel operation detection system was developed and is based on the examination of the changes in currents occurring through the two transformers. If load changes are shared between two transformers, i.e. running in parallel, the changes are expected to be identical in shape, although the amplitude may differ due to tap change differences. The system also needs to consider that the current in two non-parallel connected transformers may be similar, depending on transformer loadings, meaning that parallel operation may produce different currents, whilst non-parallel operation may produce comparable currents. This

potential phenomenon meant that rather than considering the magnitudes of each current and looking for them to match, the system needed to investigate the change in currents. When current changes occur, these changes will be detectable through each of the two transformers being investigated for parallel or non-parallel operation. Through this investigation it can be determined that if the change in current is represented through both transformers at the exact same instant then the transformers can be considered as operating in parallel. Figure 5-6 provides an example of two transformers operating in parallel, where it can be seen that the currents of the phases are sharing the change in current, indicated by the graphs tracing each other.

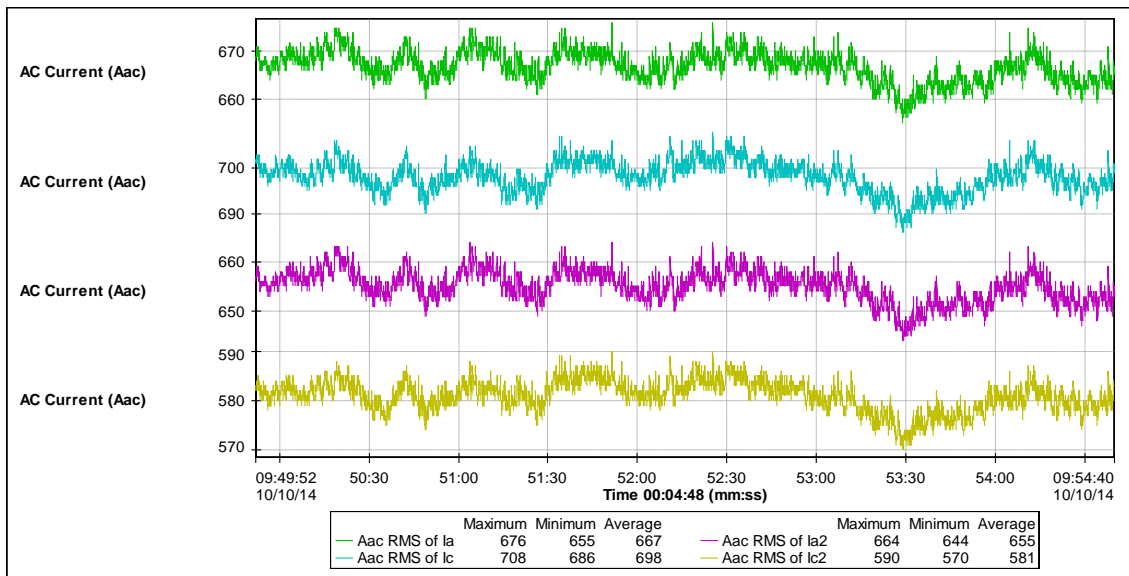


Figure 5-6: Parallel operation graph

5.4.3 Final Device System Testing

In order to minimise the works required on site in relation to testing and to minimise the risk of the device failing under test, System Integration Testing (SIT) was carried out at the University of Manchester's HV laboratory. The key requirements of the tests were as follows:

- Resistor device – ensuring network suitability;
- Control system – ensuring performance was as expected; and
- Soak testing – ensuring the system would operate over a period of time.

Resistor Testing

The resistor, developed under this project, had not previously been utilised on a DNO's system, therefore it was required to carry out a series of tests to ensure it was suitable for site installation. The current (I) tests had been carried out at the manufacturer's facility, as is standard for all the resistor units that are produced, therefore the tests required related to voltage, being:

- 95kV lightning impulse; and
- 28kV power frequency withstand.

These tests were carried out following the IEC specifications for switchgear, IEC 6227-1¹ and IEC 60060-1².



Figure 5-7: Resistor in Test Laboratory

¹ Standards/IEC, B., 62271 -1 High- Voltage switchgear and control gear, in Part 1 : Common Specification. 2011, British Standards

² IEC, 60060 - 1 High Voltage Test Techniques in Part 1: General Definition and Test Requirements. 1989.

Control System and Soak Testing

The design of the AFLM control system had been developed specifically for this project, where the Pad-Mounted Style IntelliRupter® PulseCloser's pulseclose operation would be controlled by Nortech's Envoy, discussed in Section 5.3.1.

The Pad-Mounted Style IntelliRupter® PulseCloser is a self-powered device, meaning that to operate correctly it requires 11kV, which the laboratory provided, with the resistor also connected, to as closely as possible replicate the site configuration. The Envoy, through a modem, is connected to the Pad-Mounted Style IntelliRupter® PulseCloser via a fibre-optic cable, which provides electrical isolation from the two devices, allowing fast and reliable communications to be achieved. The control system was tested in three phases:

- Confirming control;
- Confirming pulseclose operation; and
- Confirming repeatability.

The confirmation of control was achieved by sending a manually driven signal from the Envoy to the Pad-Mounted Style IntelliRupter® PulseCloser to open and close each phase of the Pad-Mounted Style IntelliRupter® PulseCloser. Following the successful testing of Pad-Mounted Style IntelliRupter® PulseCloser control the automated operation of the pulseclose activity was tested. This test was also successful, with the Pad-Mounted Style IntelliRupter® PulseCloser successfully carrying out the three configurations of pulseclosing when instructed by Envoy. In order to test the repeatability of the automated control (soak testing) it was decided that a period of eight hours operation was required with the device operating once an hour, confirming that it is suitable for site installation.

During the first soak test there were sporadic failures of the automated process, where the Envoy device could not confirm the pre-operation status of the Pad-Mounted Style IntelliRupter® PulseCloser, which meant that it would not send the pulseclose operation request. The Envoy was, for periods, understanding that a pole of the Pad-Mounted Style IntelliRupter® PulseCloser was closed when in fact it was open.

Following detailed investigation by Nortech it was learnt that the Envoy configuration was checking the status of the poles during the pulseclose operation and not confirming the final status once the pulseclose operation was completed. This was resolved following an update of the Envoy software, whereby the final status of the Pad-Mounted Style IntelliRupter® PulseCloser's poles was confirmed following the completion of the pulseclose operation. This update allowed the successful soak testing of the complete AFLM device. This change resulted in an additional improvement to the system, whereby extra logic safeguards were implemented to ensure that the Envoy would not initiate a pulse-closing operation if it detected that a Pad-Mounted Style IntelliRupter® PulseCloser pole was already in a closed state.

5.5 Site Installation

In order to install the AFLM device in to the chosen substation, Ladywood, significant electrical and civil works were required. The following sections detail the design and construction activities undertaken as part of the project.

5.5.1 Site Design and Preparation

As the AFLM device had not been installed on a DNO's network previously it was decided that the device must have its own dedicated circuit breaker. This would mean that the device could be appropriately protected from causing any unwanted effects on the system, such as excessive currents, whilst also being protected from other faults on the existing system.

Following discussions with WPD Policy Engineers it was also decided that the Pad-Mounted Style IntelliRupter® PulseCloser and Resistor should be installed in its own compound, where access was only permitted when the system was open, isolated and connected to earth, to minimise potential risk of tampering or injury to personnel. This system was managed through signage and a unique key for the AFLM compound access. This process is defined in WPD's policy documents relating to the device. The detail of the signs is provided in Appendix G – FLM Access Signage. This was required due to it being the first installation and may not be required in future installations.

The complete site design can be seen in Appendix F – Site Design.

5.5.2 Switchgear Installation

In order to integrate a new 11kV circuit breaker in to the existing network a three panel arrangement was required. This requirement was due to the existing switchgear being GEC KN series circuit breakers that were installed in the early 1960s, which due to having compound filled busbar arrangements are not easily extended. Therefore, an interconnector circuit, which is a cable connection between two primary substations that in the instance of a major outage of the system can provide power between substations, was used. This meant that two additional circuit breakers were required to make this connection. The 11kV integration methodology is detailed in Appendix C – Single Line Diagram.

The 3-panel switchboard was installed in to site in October 2013, however, due to ongoing works at the substation, which were to change the two 132/11/11kV transformers due to existing fault level issues, the decision was taken to not connect this switchboard on to the network until the first transformer had been replaced and re-commissioned. This was due to the fact that the interconnector to be used was part of the alternative supply plan if there was an unplanned outage whilst the substation was operating on one transformer rather than two. This meant the switchgear was commissioned and energised at the same time as the AFLM device, in February 2014.

5.5.3 Device Installation

A robust foundation was required to house the Pad-Mounted Style IntelliRupter® PulseCloser and Resistor. At the specified site there was an existing large foundation that was no longer used, therefore the decision was made to adapt this foundation. The changes required were to cut out parts of the existing foundation to allow the cable connections between the switchgear to the Pad-Mounted Style IntelliRupter® PulseCloser and then from the Pad-Mounted Style IntelliRupter® PulseCloser to the Resistor. Appendix F – Site Design details both the civil and electrical design works for the site.

As previously discussed the AFLM compound is only to be accessed when the AFLM circuit breaker is open, isolated and connected to earth, therefore a palisade fence was installed to ensure this was appropriately managed. Figure 5-11 shows the finished device installation and compound arrangement.

Both the Pad-Mounted Style IntelliRupter® PulseCloser and Resistor are suitable for outdoor installation, therefore no form of weather protective covering was required; this would be equally applicable to any future site installation.



Figure 5-8: Pad-Mounted Style IntelliRupter® PulseCloser on site



Figure 5-9: Resistor on site



Figure 5-10: AFLM Installation at Ladywood – Side View

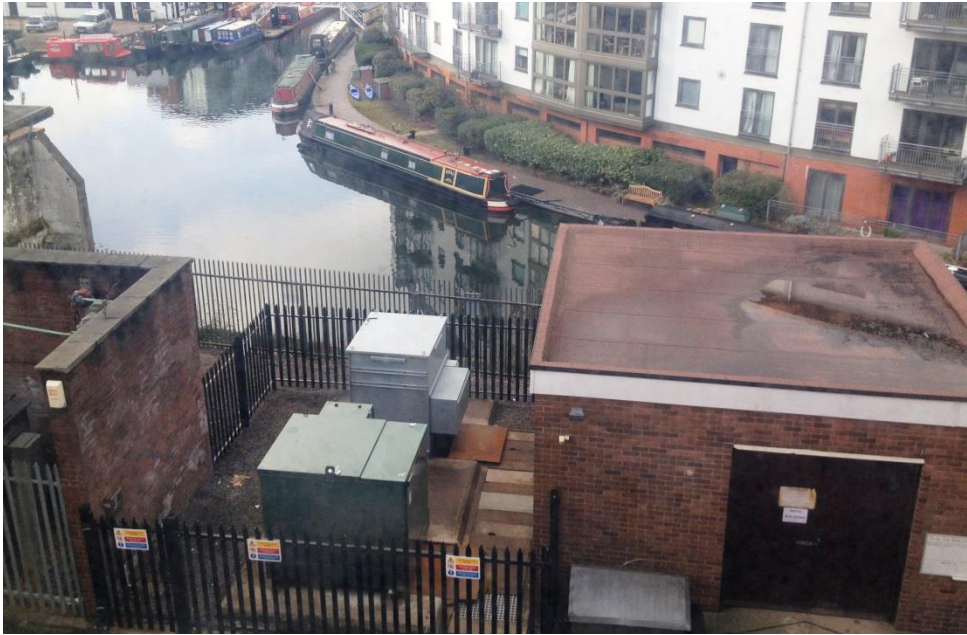


Figure 5-11: AFLM Installation at Ladywood – Top View

On delivery of the Pad-Mounted Style IntelliRupter® PulseCloser to site it was decided that the earth connection for the Pad-Mounted Style IntelliRupter® PulseCloser was not robust enough. The earth connection was a removable thin copper bar, which is standard in America. This was updated to be to WPD standard specification. The detail of the upgrade can be seen in Figure 5-12.



Figure 5-12: Earth bar upgrade of Pad-Mounted Style IntelliRupter® PulseCloser

5.5.4 Commissioning and Energisation

Following the connection of the switchgear to the 11kV system the commissioning of the AFLM device was undertaken. This work was carried out according to a pre-defined schedule and replicated the system integration testing carried out at the University of Manchester.

Firstly, the controlled operation of the Pad-Mounted Style IntelliRupter® PulseCloser was tested, where the signals for operation were manually triggered. In order to minimise the risk to the wider system, for the instance of mal operation, the Resistor was disconnected from the system. This meant that the Pad-Mounted Style IntelliRupter® PulseCloser when closing or pulseclosing was not actually connecting the two phases together but performing the intended function. This test was carried out three times on each permutation of pulseclose operation.

Following the successful testing of the manually controlled pulseclose operation the automatic operation via the Envoy was tested, again with the resistor disconnected. This test was again carried out for three complete cycles of pulseclose permutation successfully.

These two tests completed the off load testing (Resistor disconnected) requirements of the AFLM device. The Resistor was then connected to the Pad-Mounted Style IntelliRupter® PulseCloser and the previous two tests were carried out again. After each manually controlled operation, of the pulseclosing, the current and voltage detail was gathered and investigated to ensure that the actual data was as expected. Figure 5-13, Figure 5-14 and Figure 5-15 show the performance of the voltage and current for each of the three impedance values of the Resistor.

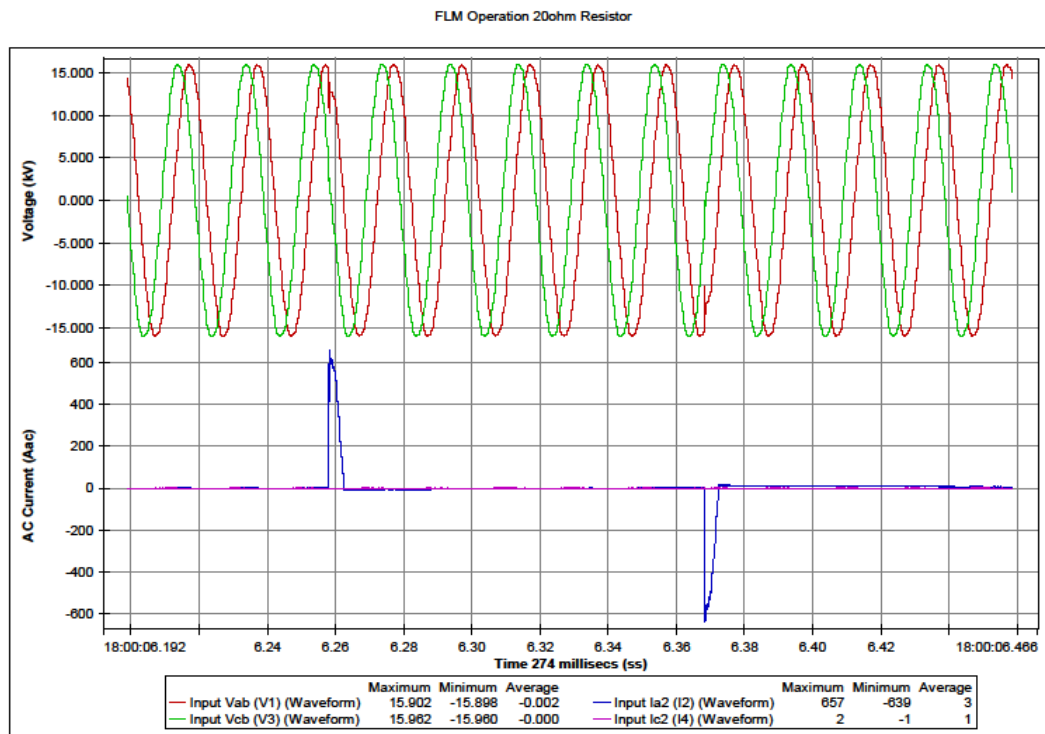


Figure 5-13: I and V disturbance through 20ohm Resistor

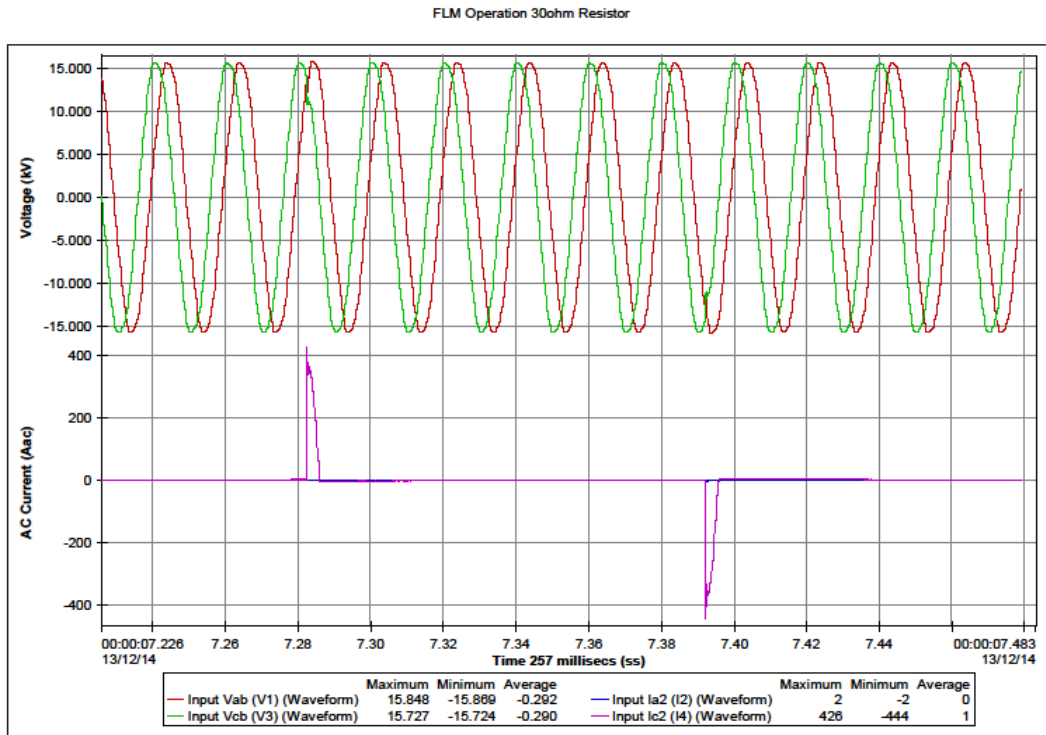


Figure 5-14: I and V disturbance through 30ohm Resistor

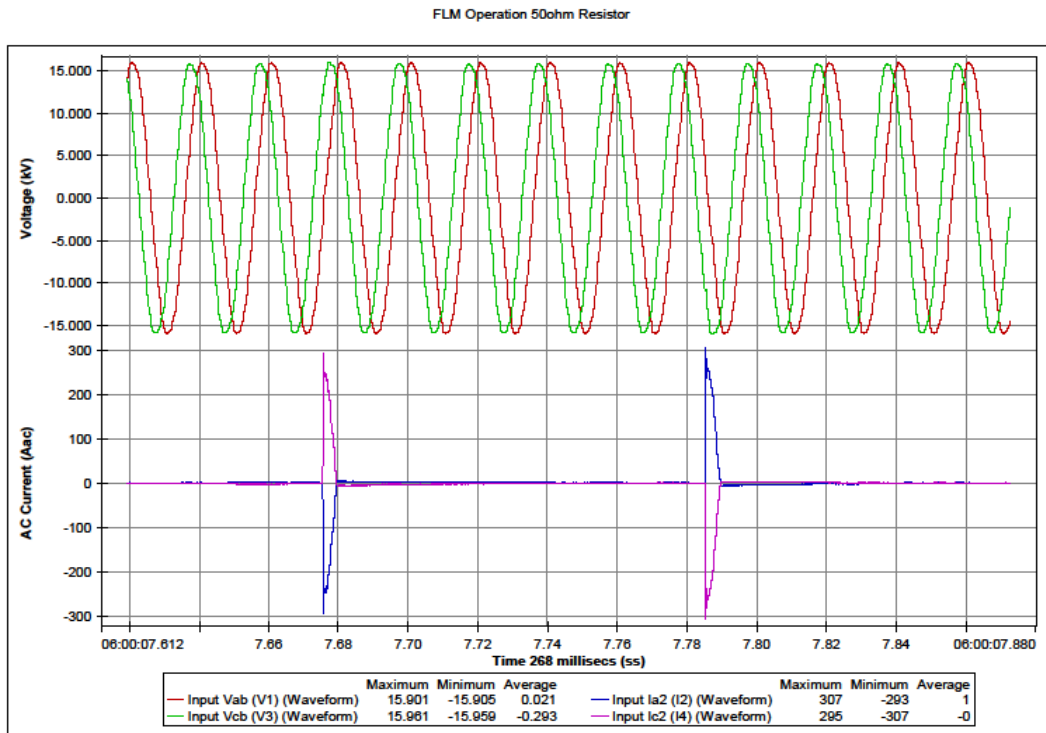


Figure 5-15: I and V disturbance through 50ohm Resistor

6 The outcomes of the Project

The description of the work carried out, in Section 5 of this report, outlines the process followed to design, test, install and demonstrate the AFLMS device. Throughout this project a number of challenges arose and were successfully overcome in providing the detailed project outcomes, which is a device that when instructed provides a real-time fault level value for both Peak and RMS of the 11kV network it's connected.

This project has identified a clear outcome for the DNO community in confirming that an AFLM device is achievable and can be integrated in to an existing 11kV distribution network.

6.1 PM7000 Firmware

The fundamental role of the PM7000 and specifically the firmware is to extrapolate fault level values for both natural and artificial disturbances, where these disturbances are captured through the dynamic monitoring of both the voltage and current of the system. As detailed in Section 5.2.4 the use of an inductor to add impedance in the system was proposed, limiting the effect of the disturbance on the network, however, due to test conditions and requirements for real network connection a resistor was required. Following the commissioning and energisation of the AFLM it was ascertained that the length of the pulse close operation had reduced, due to the utilisation of a resistor rather than an inductor. The PM7000 takes three data points during the Pad-Mounted Style IntelliRupter® PulseCloser pulseclose operation (now 5ms) and the initial firmware was, due to the reduction in pulse length, missing the final data point from the pulse, seen in Figure 6-1.

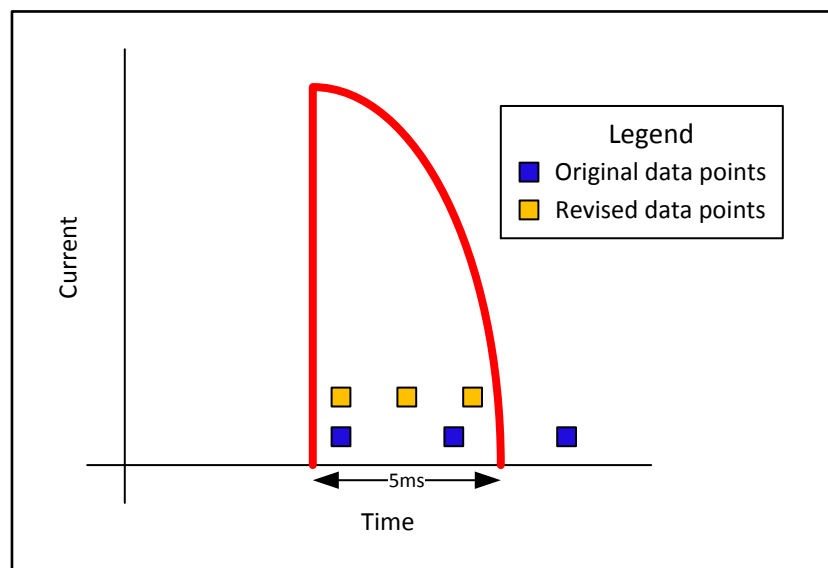


Figure 6-1: FLM Pulse

Following the identification of this, due to spurious fault level predictions, a revised version of firmware was developed, that ensured all three data points were within the Pad-Mounted Style IntelliRupter® PulseCloser's pulseclose operation. Several further firmware upgrades and developments were required in order to mitigate specific data cleansing issues.

6.2 Pad-Mounted Style IntelliRupter® PulseCloser and Resistor Performance

The Pad-Mounted Style IntelliRupter® PulseCloser device, through the demonstration within this project, has proven to deliver a reliable and repeatable artificial disturbance on to the 11kV network. This disturbance then allows the fault level to be accurately monitored. Throughout the project lifecycle there has been no mechanical or electrical issues with the device, including any negative effects leading to the disturbance of supply to customers, such as harmonic or flicker issues.

6.3 Installation and Connection of AFLM

The project designed and implemented a safe and reliable installation methodology of the AFLM. A dedicated 11kV circuit breaker was installed for the connection of the AFLM along with specific protection, described in Section 5.3.4. A WPD policy is now in place for the Application and Connection of AFLM Devices on to the 11kV network.

6.4 Control, Communications and Data Storage

Following the energisation of the AFLM device on the 27th February 2014, the device has successfully been controlled by the Nortech Envoy, discussed in Section 5.3.1. This illustrates that a robust and suitable mechanism for the control of the Pad-Mounted Style IntelliRupter® PulseCloser in order to initiate a pulseclose operation is in place. The Envoy mechanism has been designed in such a way that the frequency of pulseclose operations can be remotely changed, to allow for more or less frequent fault level monitoring. This element of design is particularly useful as different substations will have varying levels of natural disturbances, allowing fault levels to be generated, therefore the frequency of artificial disturbances can easily and accurately be selected.

iHost was selected as the storage medium for the data generated by the AFLM. Throughout the project this proved to be a successful option, where it allowed remote access to WPD personnel and also project partners, who could use real-time data generated by the AFLM device but also use all the stored data to generate reports, compare performance over different time frames and interrogate the operation of the device remotely. This was a clear advantage over having a data storage system that was accessible only to WPD personnel and allowed the flexibility to perform a variety of data interrogation activities.

6.5 AFLM Results and Accuracy

6.5.1 Reliability

The AFLM was set to operate every six hours (four operations per day) starting at 00:00 (midnight). For the thirty day period analysed below, a total of 120 operations of the AFLM were carried out. In total, 83 data sets were recorded in iHost. This gives a reliability figure of 70%. Learning has shown that this figure is driven by the PM7000 not reliably detecting the change in voltage and current when the Pad-Mounted Style IntelliRupter® PulseCloser pulsecloses on to the 50Ω resistor, due to the low voltage disturbance value generated and communications issues to the data repository.

6.5.2 Data Range

The maximum, minimum and average fault level measurements recorded during the time period are shown in Table 6.1 below.

Description	Monitor Peak (kA)	Monitor 10ms RMS (kA)
Max	21.86	7.69
Average	18.50	6.91
Min	15.98	6.16
Range	5.88	1.53

Table 6-1: Summary of Fault Currents for whole period

To further understand the spread of fault level values, the data was divided into different operating times. Table 6.2 and Table 6.3 below show the range of values for each of the four different timed operations for Peak and RMS respectively.

Peak (kA)	00:00	06:00	12:00	18:00
Max	19.17	20.18	21.86	20.56
Average	17.35	18.52	19.44	18.84
Min	15.98	16.56	16.87	16.68
Range	3.19	3.62	4.99	3.88

Table 6-2: Summary of Peak Fault Current by Operation Time

10ms RMS (kA)	00:00	06:00	12:00	18:00
Max	7.07	7.36	7.69	7.56
Average	6.59	6.91	7.18	7.00
Min	6.16	6.30	6.38	6.40
Range	0.91	1.06	1.31	1.16

Table 6-3: Summary of 10ms RMS Fault Current by Operation Time

Figure 6-2 and Figure 6-3 below show the relationship between the Peak fault level and 10ms RMS fault level respectively for each AFLM operation time for the whole period studied.

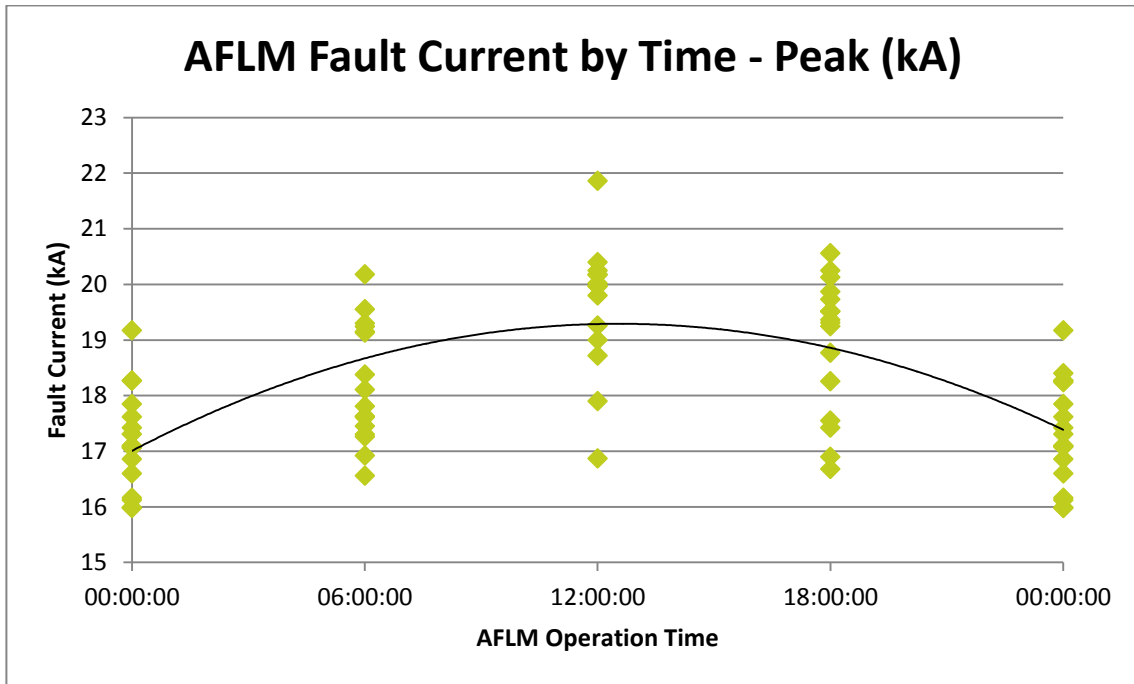


Figure 6-2: Peak Fault Current Variation with Time

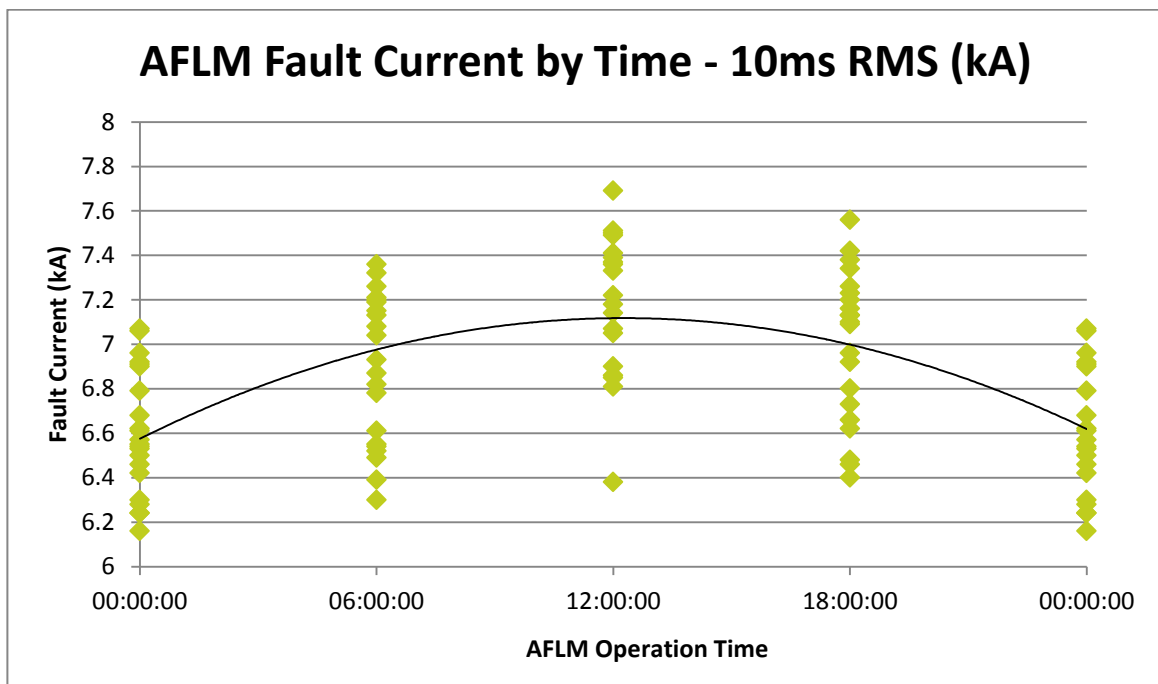


Figure 6-3: 10ms RMS Fault Current Variation with Time

Figure 6-2 and Figure 6-3 show that the fault current at Ladywood Substation is at a low at 00:00 and at a high at 12:00. This profile was expected due to the substation being located close to Birmingham City Centre, where there are a large number of business customers and offices connected. This is confirmed by the substation demand curves with demand at 00:00 around 8MVA and at 12:00 around 11MVA on a working day.

This learning shows that a daily variance in fault level is present on the network and supports the need for dynamic network modelling.

6.5.3 Modelled Data

Using half hourly voltage and power flow data collected via WPD’s data logger system³ the values for the 30 minute period prior to the AFLM operation were added to the PSS/E model of the substation. The 11kV demand was treated as a lumped load attached directly to the 11kV busbar, i.e. not shared along different HV feeders.

For all studies carried out in this report, the National Grid Fault infeed was fixed; giving a fixed upstream fault infeed value at Ladywood substation.

WPD’s G74 script⁴ was then used to calculate the fault level for each time interval using a fault level infeed for the 11kV load of 1MVA/MVA and 2MVA/MVA. 1MVA/MVA is the standard recommendation for 11kV networks, however, this value could be high or low dependant on the type of load connected to a substation, where it is expected that a purely domestic load would give the lowest MVA/MVA infeed and a purely heavy industrial load would give the largest.

6.5.4 Comparison – Monitored vs Modelled

Peak Fault Levels

In all graphs below, the red line represents the modelled fault level using a fault infeed of 1MVA/MVA for 11kV loads. The blue line represents the modelled fault level using a fault infeed of 2MVA/MVA of 11kV load. The green line represents the values calculated by the AFLM device.

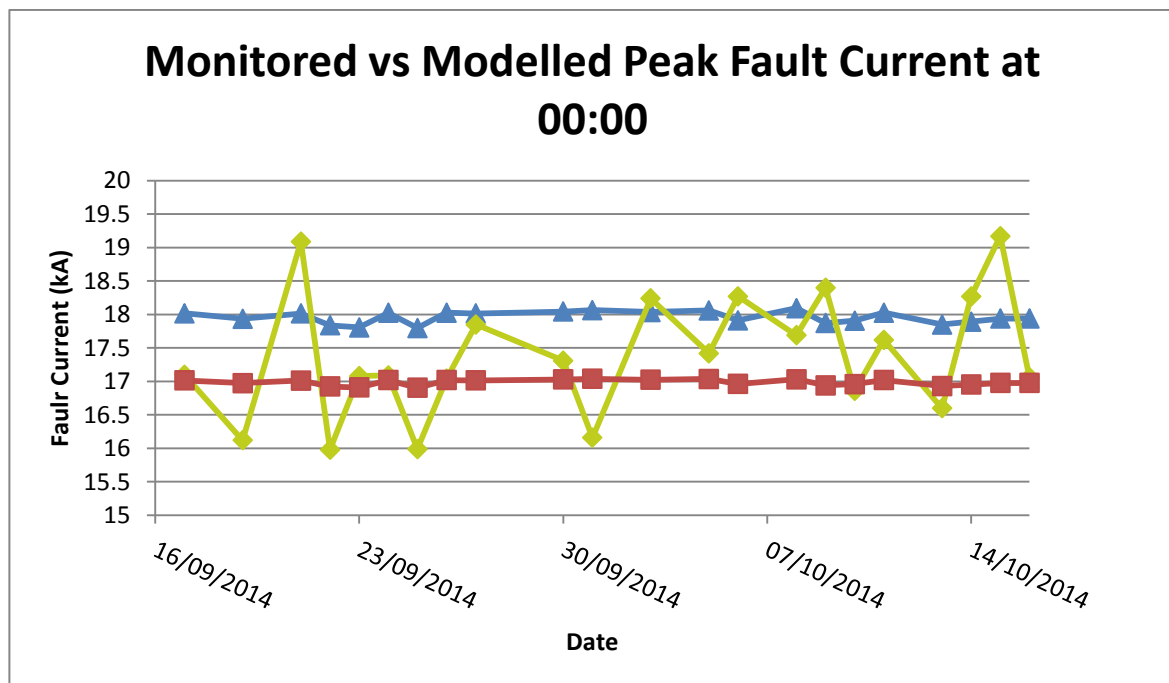


Figure 6-4: Modelled vs Monitored Peak Fault Current at 00:00

³ WPD’s database of power, voltage and current measurements from the network

⁴ WPD’s mechanism to calculate fault levels according to ENA G74 requirements in PSS/E

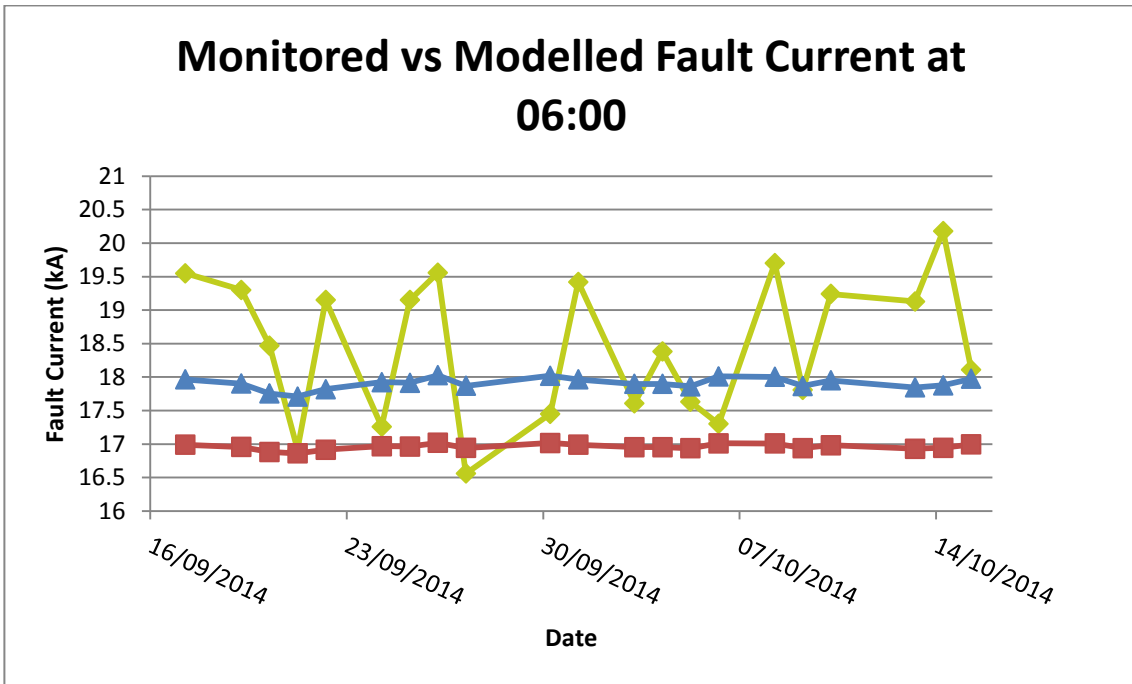


Figure 6-5: Monitored vs Modelled Peak Fault Current at 06:00

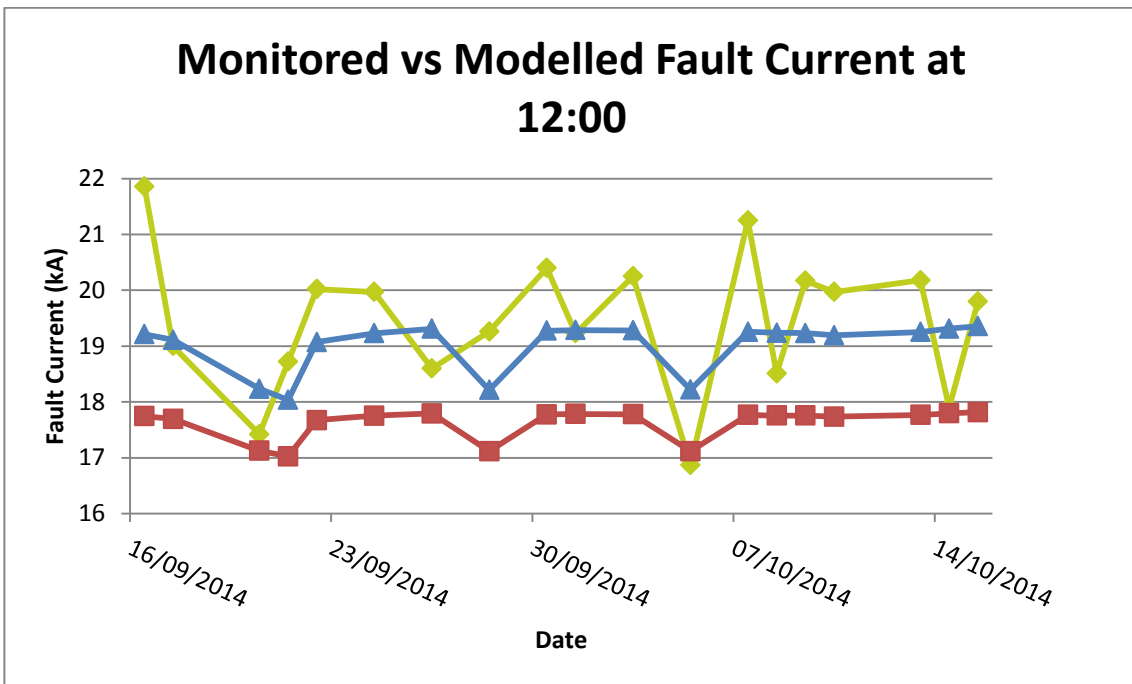


Figure 6-6: Monitored vs Modelled Peak Fault Current at 12:00

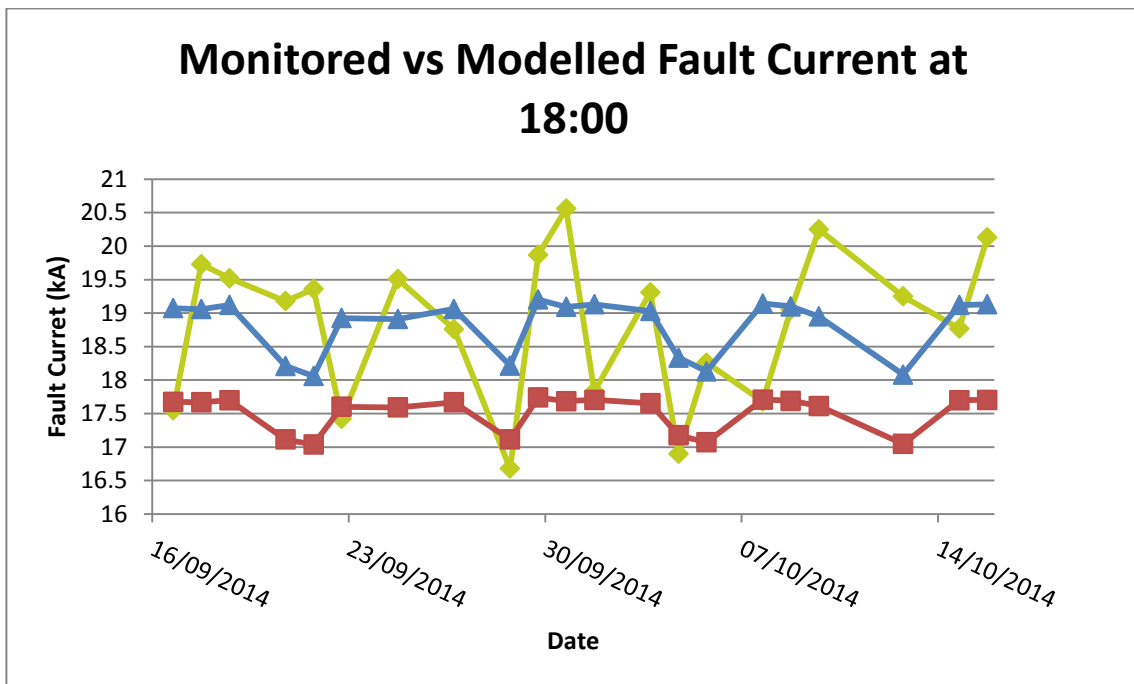


Figure 6-7: Monitored vs Modelled Peak Fault Current at 18:00

The 00:00 and 06:00 graphs show that the fault level calculated from the PSS/E models is relatively stable and does not show any major changes day to day. The 12:00 and 18:00 graphs clearly show lower fault levels at weekends compared to weekdays and a much greater variation in fault level value.

The monitored values show significant variations at all four time periods but greater correlation to modelled results can be seen in the 12:00 and 18:00 graphs.

10ms RMS Fault Level

In all graphs below, the red line represents the modelled fault level using a fault infeed of 1MVA/MVA for 11kV loads. The blue line represents the modelled fault level using a fault infeed of 2MVA/MVA of 11kV load. The green line represents the values calculated by the ALFM device.

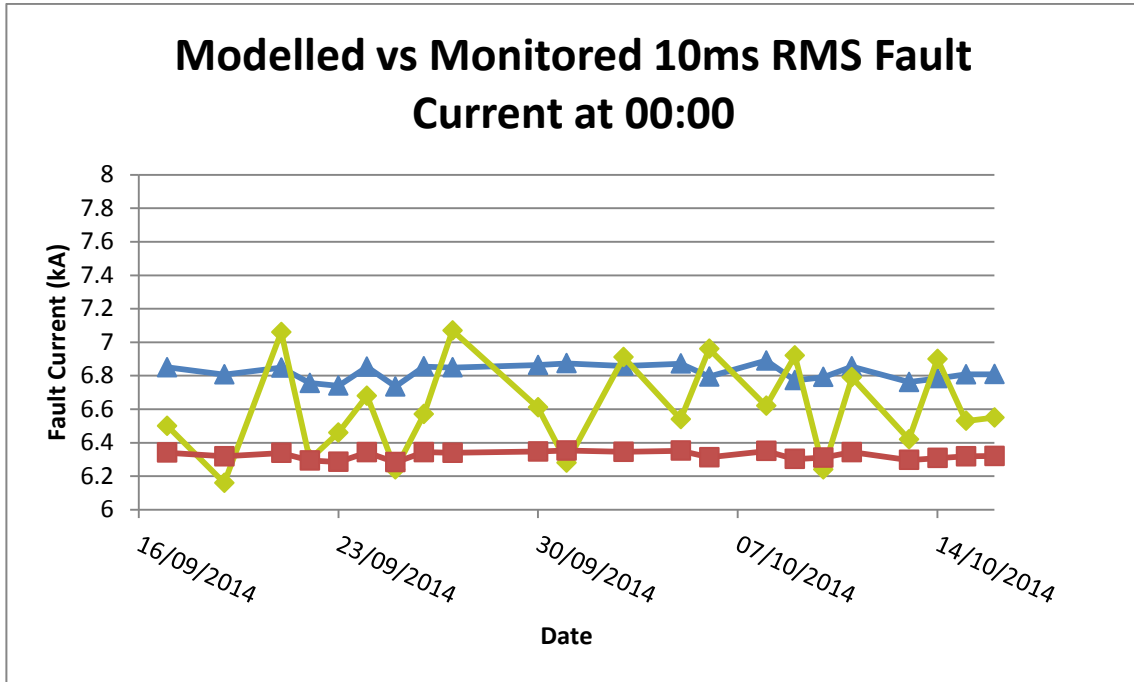


Figure 6-8: Monitored vs Modelled 10ms RMS Fault Current at 00:00

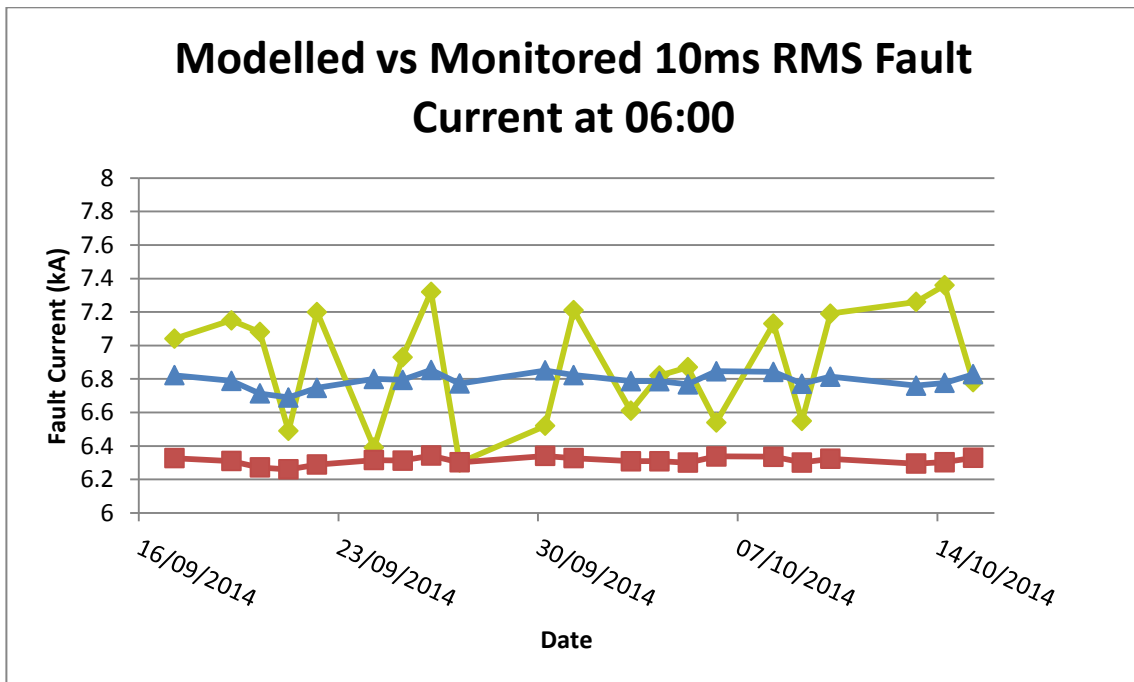


Figure 6-9: Monitored vs Modelled 10ms RMS Fault Current at 06:00

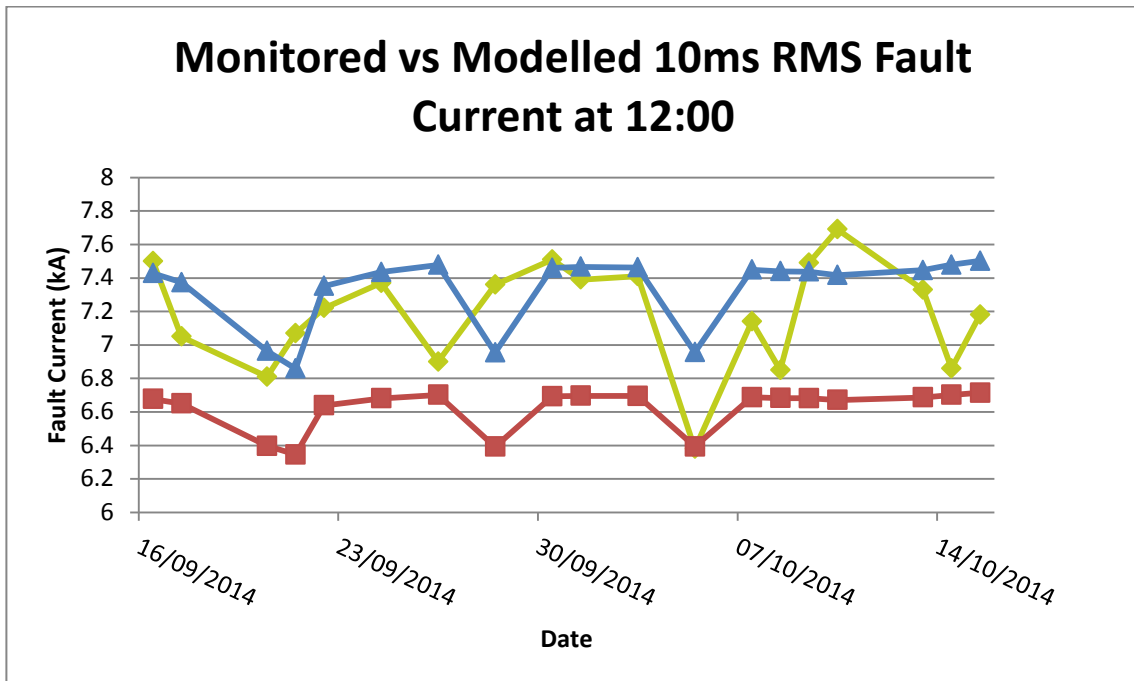


Figure 6-10: Monitored vs Modelled 10ms RMS Fault Current at 12:00

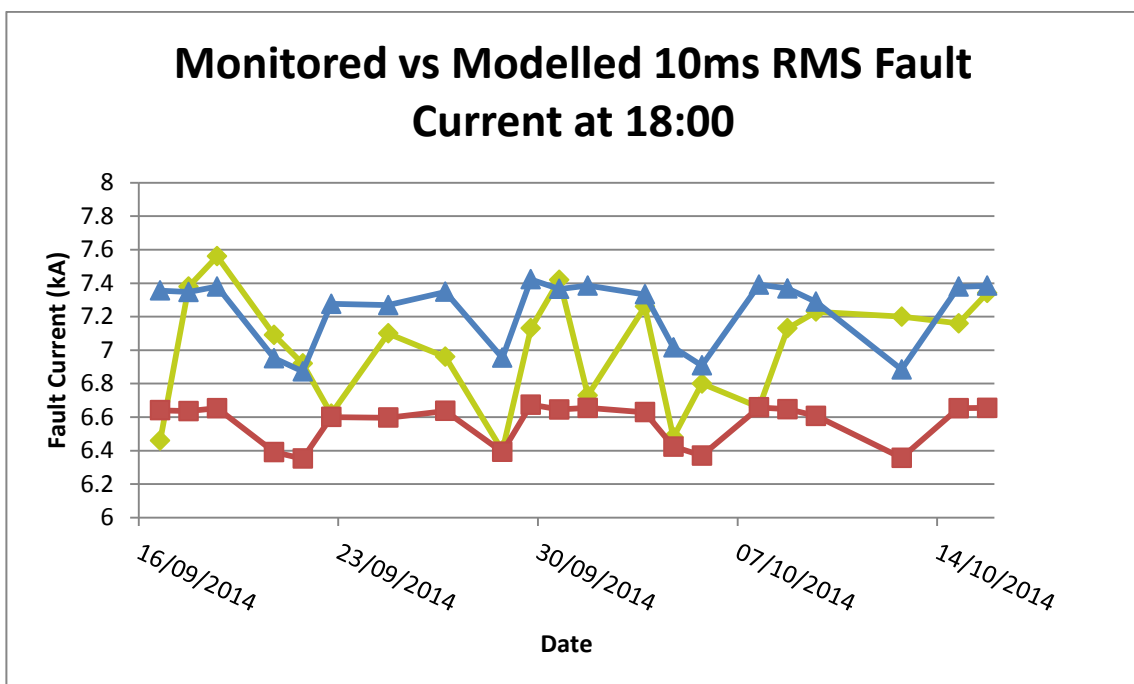


Figure 6-11: Monitored vs Modelled 10ms RMS Fault Current at 18:00

As with the Peak fault level data, 00:00 and 06:00 graphs show that the fault level calculated from PSS/E models is relatively stable and does not show any major changes day to day. The 12:00 and 18:00 graphs clearly show greater fault level fluctuations and lower values at weekends compared to weekdays.

6.5.5 Peak Fault Level

Table 6.4 below shows the cumulative total of modelled peak values within a percentage error of the monitored values.

% Error Model to Monitored (Peak)	Count of values within % (1MVA/MVA)	% of data values (1MVA/MVA)	Count values within % (2MVA/MVA)	% of data values (2MVA/MVA)
0%	0	0.00%	0	0.00%
1%	11	13.25%	7	8.43%
2%	19	22.89%	14	16.87%
3%	23	27.71%	21	25.30%
4%	27	32.53%	33	39.76%
5%	31	37.35%	43	51.81%
6%	37	44.58%	51	61.45%
7%	41	49.40%	60	72.29%
8%	47	56.63%	69	83.13%
9%	49	59.04%	75	90.36%
10%	52	62.65%	77	92.77%
11%	57	68.67%	77	92.77%
12%	70	84.34%	82	98.80%
13%	76	91.57%	83	100.00%
14%	80	96.39%		
15%	80	96.39%		
16%	80	96.39%		
17%	82	98.80%		
18%	82	98.80%		
19%	83	100.00%		

Table 6-4: Cumulative Total of Modelled Peak Fault levels within % Error of Monitored Fault Level

Table 6.4 shows that using a fault infeed value of 1MVA/MVA of load, 37.35% of modelled values are within 5% of the monitored values. Increasing the fault infeed to 2MVA/MVA of load increases this percentage to 51.81%.

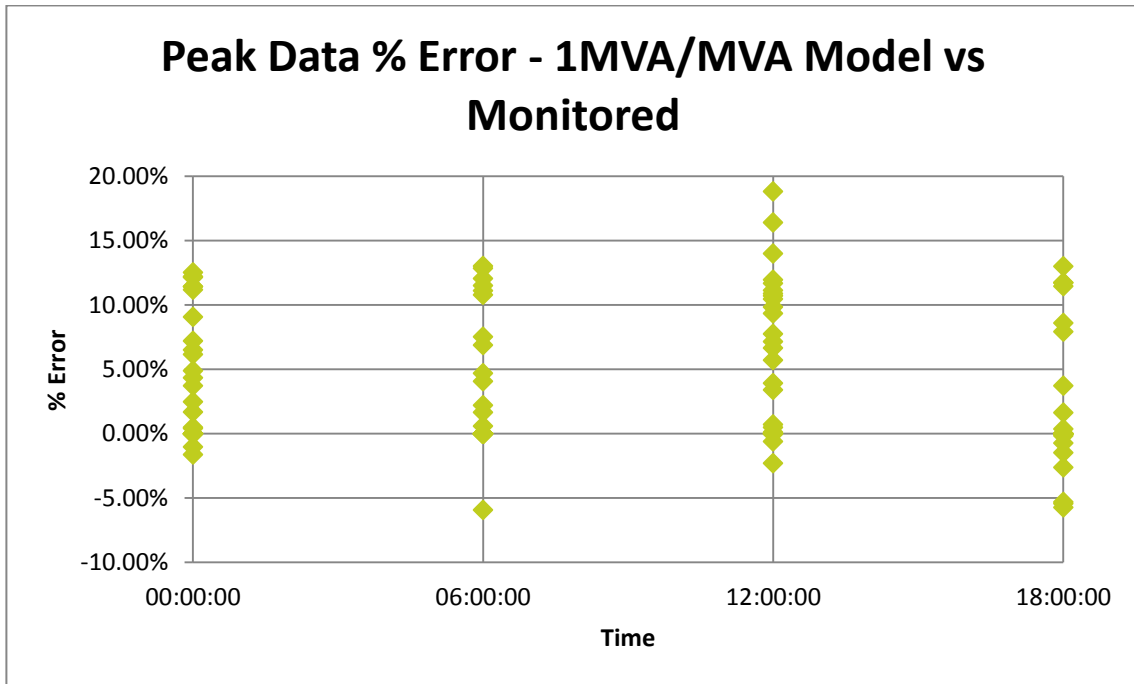


Figure 6-12: Peak Fault Level % Error 1MVA/MVA Model to Monitor

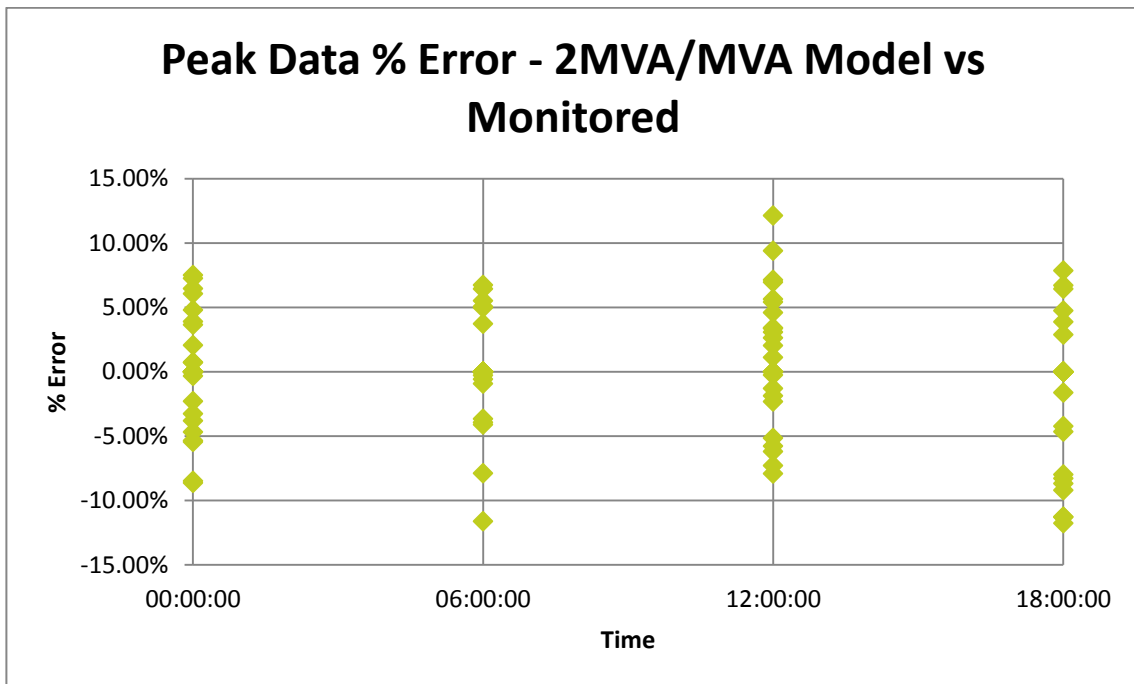


Figure 6-13: Peak Fault Level % Error 2MVA/MVA Model to Monitor

Figure 6-12 and Figure 6-13 above show the percentage error of the monitored results compared to the corresponding modelled value. Assuming a $\pm 5\%$ margin of error on all monitored values, for each modelled value outside of this the change in modelled fault current required to be within 5% of the monitored value was calculated. A summary of the fault current changes are provided in Table 6.5 below.

	1MVA/MVA	2MVA/MVA
Max Fault Current Change (kA)	3.02	1.56
Average Fault Current Change(kA)	1.02	-0.01
Min Fault Current Change (kA)	-0.15	-1.10
Range (kA)	3.17	2.65
No. Values below monitored range	48	21
No. values above monitored range	4	19

Table 6-5: Summary of Error Correction required for Model = Monitor $\pm 5\%$

Figure 6-12, Figure 6-13 and Table 6.5 show that the accuracy of the AFLM device is much better when comparing its data to the 2MVA/MVA infeed values rather than the 1MVA/MVA, where the average value of difference is only 0.01kA and a maximum difference of 1.56kA. This evidence further supports the need for active dynamic modelling to account for the changing load and mix of generation on the network.

6.5.6 10ms RMS Fault Level

Table 6.6 below shows the cumulative total of modelled RMS values within a percentage error of the monitored values.

% Error Model to Monitored (10ms RMS)	Count of values within % (1MVA/MVA)	% of data values (1MVA/MVA)	Count values within % (2MVA/MVA)	% of data values (2MVA/MVA)
0%	0	0.00%	0	0.00%
1%	8	9.64%	14	16.87%
2%	13	15.66%	23	27.71%
3%	22	26.51%	31	37.35%
4%	29	34.94%	41	49.40%
5%	32	38.55%	52	62.65%
6%	34	40.96%	62	74.70%
7%	42	50.60%	66	79.52%
8%	45	54.22%	70	84.34%
9%	55	66.27%	75	90.36%
10%	61	73.49%	80	96.39%
11%	70	84.34%	82	98.80%
12%	75	90.36%	82	98.80%
13%	78	93.98%	82	98.80%
14%	82	98.80%	83	100.00%
15%	83	100.00%		

Table 6-6: Cumulative Total of Modelled 10ms RMS Fault Levels within % Error of Monitor

Table 6.6 shows that using a fault infeed value of 1MVA/MVA of load, 38.55% of monitored values is within 5% of the modelled values. Increasing the fault infeed to 2MVA/MVA of load increases this percentage to 62.65%.

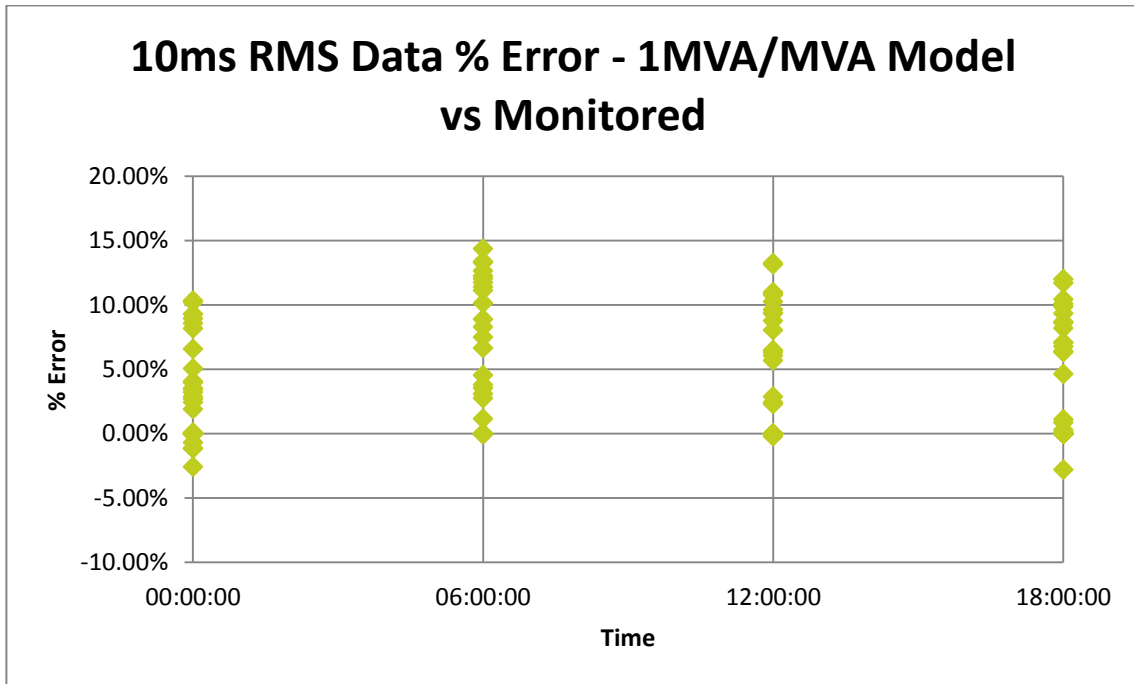


Figure 6-14: 10ms RMS Fault Level % Error 1MVA/MVA Model to Monitor

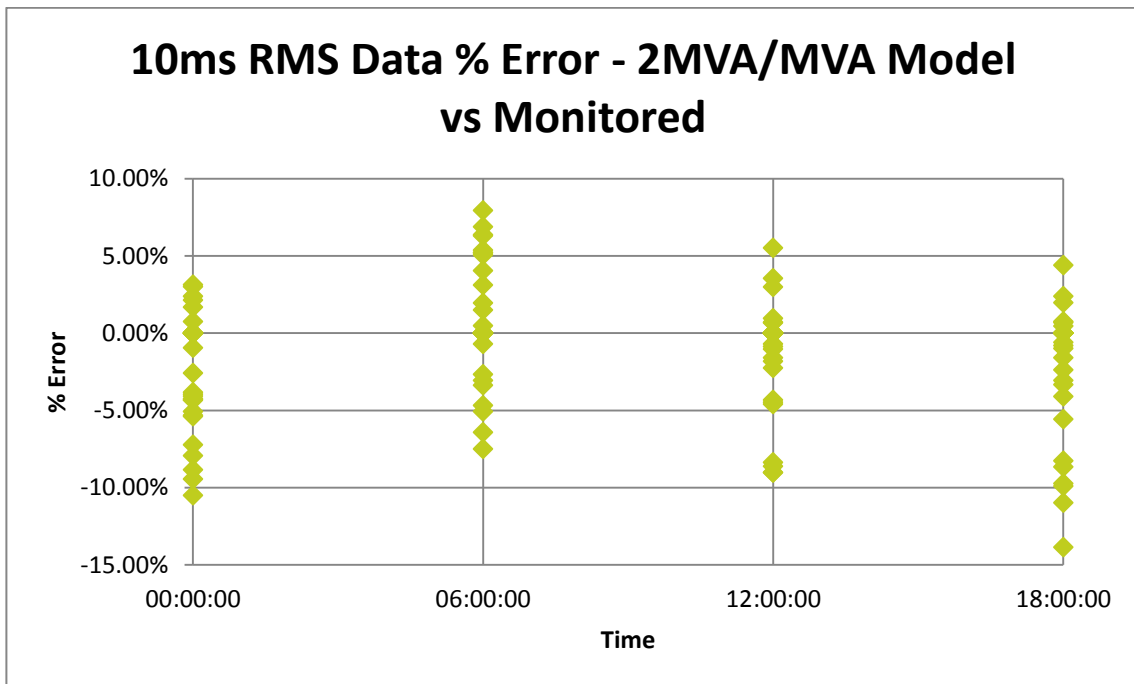


Figure 6-15: 10ms RMS Fault Level % Error 2MVA/MVA Model to Monitor

Figure 6-14 and Figure 6-15 above show the percentage error of the monitored results compared to the corresponding modelled value. Assuming a $\pm 5\%$ margin of error on all monitored values, for each modelled value outside of this the change in modelled fault current required to be within 5% of the monitored value was calculated. A summary of the fault current changes are provided in Table 6.7 below.

	1MVA/MVA	2MVA/MVA
Max Fault Current Change (kA)	0.69	0.22
Average Fault Current Change(kA)	0.32	-0.13
Min Fault Current Change (kA)	0.00	-0.57
Range (kA)	0.69	0.79
No. Values below monitored range	51	9
No. values above monitored range	0	22

Table 6-7: Summary of Error Correction required for Model = Monitor $\pm 5\%$

Figure 6-14, Figure 6-15 and Table 6.7 shows that using the modelled values at 1MVA/MVA all the values are below the monitored values. The modelled values calculated using 2MVA/MVA the majority of the values are within a 5% tolerance of the monitored value.

As with the Peak data, the AFLM device values are closer to the modelled values at 2MVA/MVA. This RMS data further supports the need for accurate dynamic modelling of the system.

6.6 Technology Readiness Level

The initial Technology Readiness Level (TRL) for the AFLM device was 6. This was due to the fact that although the individual elements had been developed and tested on their own, the integration of the complete device was still untested. Following the successful integration of the device the TRL has increased from 6 – 7. Further developments are required to improve the TRL to 8, including the further integration of the control and communications with the PM7000 power monitoring device.

6.7 Increasing Network Connections and Contractual Arrangements

The amount of fault level headroom available is calculated by subtracting the real-time network fault level from the fault level rating of the equipment. The real-time network fault level varies depending on a number of factors including network configuration, embedded generation and load contribution; however, the fault level rating of equipment is a fixed value.

The AFLM device has the capability to provide both natural and artificial disturbance real-time data. Under natural disturbance conditions the AFLM device automatically captures an updated real-time fault level value when current and voltage disturbances are seen on the network, typically due to switching operations and notable load changes. However, if no natural disturbances are available then an AFLM artificial disturbance is triggered to provide a real-time fault level value.

Under artificial disturbance operation the AFLM can be triggered to provide an on-demand fault level value. This on-demand fault level value will then be used to ascertain the instantaneous fault level headroom in real-time to determine if an embedded generator can remain/connect on the network. Therefore, there is now the capability to make an informed decision on whether or not it is safe to allow additional generation. In practise the fault

level calculations and decision making would be carried out automatically by an integrated control system, presenting the results in either an existing Network Management System (NMS) or another selected format.

There are various aspects that need to be carefully considered in implementing the AFLM scheme for the control of embedded generation. Several fundamental decisions and calculations would need to be carried out, such as understanding the operation of the network, i.e. whether it is in a normal or abnormal configuration, which will allow additional information to be considered in determining the connection of a generator.

Through WPD's development of Alternative Connection Offers and Agreements the requirements of a generator under 'Limitation of Capacity' for an alternative connection are defined. These documents clearly set out the process and requirements to customers, including the time to disconnect or carry out the instructed action and the actions if a customer fails to carry out the required instruction. Instructions that could be provided to a customer in order to actively manage their connection for fault level issues are:

- Specify that the customer must De-energise the Connection Point and the Customer's Installation from the Company's Distribution System; and
- Specify that the customer must De-energise Generator X from the Company's Distribution System.

Key information to be used for the contractual arrangements for flexible generation connections, based on real-time fault level data, is the historic analysis of fault level data in the form of actual modelling of the network conditions and power flows to understand the constraint times (in hours or days) that can be expected based on historic trends. Figure 6-16 shows a flowchart of the decisions in order to determine a generator's connection to the system.

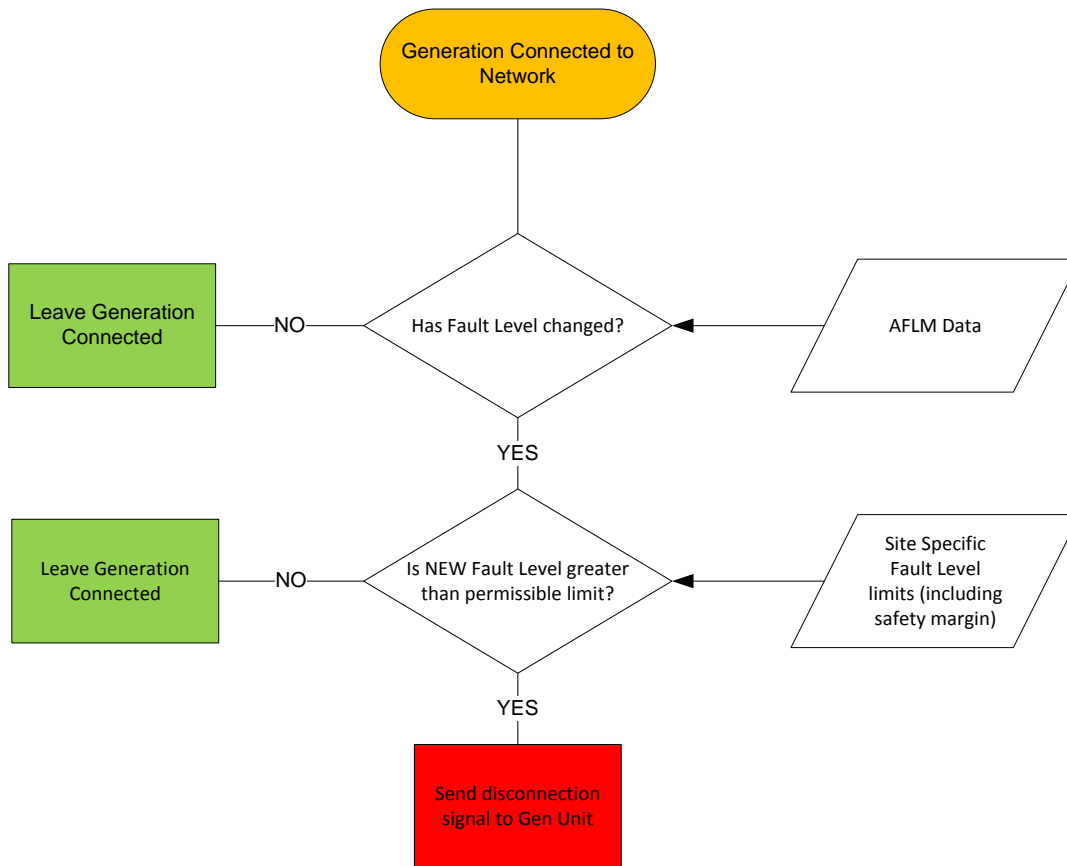


Figure 6-16: Flowchart to determine if Gen Unit can remain connected

In order to fully understand the conditions when these instructions would be required and to gain sufficient confidence in the data supplied by the AFLM device additional system testing and trialling of the units is required. This work will be carried out as part of WPD’s Tier-2 project, FlexDGrid, where 10 AFLM devices will be installed and full commercial agreements will be formulated.

7 Performance compared to the original Project aims, objectives and success criteria

7.1 Integration of technologies to provide real-time fault level values

Integration of Outram fault level monitor and S&C intellirupter device, which will provide a controllable (non-customer affecting) fault to be analysed and relayed in real-time

The project developed a working system combining the PM7000 and Pad-Mounted Style IntelliRupter® PulseCloser to provide a non-customer affecting disturbance that enabled Peak and 10ms RMS fault levels to be extrapolated. The Pad-Mounted Style IntelliRupter® PulseCloser, through the development of the Nortech Envoy control methodology, is fully controllable.

7.2 Installation of Active Fault Monitoring device at Primary Substation

The project successfully installed an AFLM device on to the 11kV and has subsequently operated for a 12 month period, as originally stated.

7.3 Success Criteria

7.3.1 Conduct factory acceptance tests of fault level monitoring devices

Successfully completed to schedule in July 2012. Details provided in Section 5.2.

7.3.2 Install and commission the active fault level management scheme

Successfully completed to schedule in February 2014. Details provided in Section 5.5.

7.3.3 Ability to monitor fault levels in real-time to accommodate additional distributed generation without the need for large-scale network reinforcement

Significant learning towards the use of real-time fault level data in order to minimise the requirement for large-scale network reinforcement has been achieved. Section 6.5 details the learning achieved from the real-time Peak and RMS data that has been obtained. Section 6.7 provides a detailed understanding of the engineering and contractual requirements to successfully integrate additional generation connections on to the network.

7.3.4 Integrate distributed generation into the network more quickly

The development and implementation of the AFLM device has proven that Peak and RMS fault levels can be generated, at a controllable point in time, to better understand the real-time network conditions compared to the existing methodology of utilising the worst-case fault level of the affected network. Additional testing is required and more extensive trials, which will form part of FlexDGrid in order to fully determine its reliability. In the future, following further trials, if a generator wants to connect to the 11kV system the time to connect will be in the region of six months rather than 24 months.

7.3.5 Development of an engineering interface and control methodology

Throughout the project a detailed methodology for the integration of the AFLM device on to the 11kV network and the active control of the device was completed. During this project a WPD policy was created for the Application and Connection of 11kV AFLM Devices.

7.3.6 New contractual arrangements to maximise generation connectivity

As discussed in Section 6.7, the different scenarios to understand the process to facilitate the connection of additional generation on to an existing network without the need for expensive and long lead time reinforcement have been documented. Modelling work has shown that the worst-case fault level of a substation can occur as infrequently as 5% of the year (18 days). Therefore, to enable customers to connect additional generation, the AFLM device fault level data needs to be used appropriately to realise the benefits of moving from worst-case to real-time fault level data.

Below is a simplified approach to be followed for the condition to determine whether a disconnected generator can reconnect.

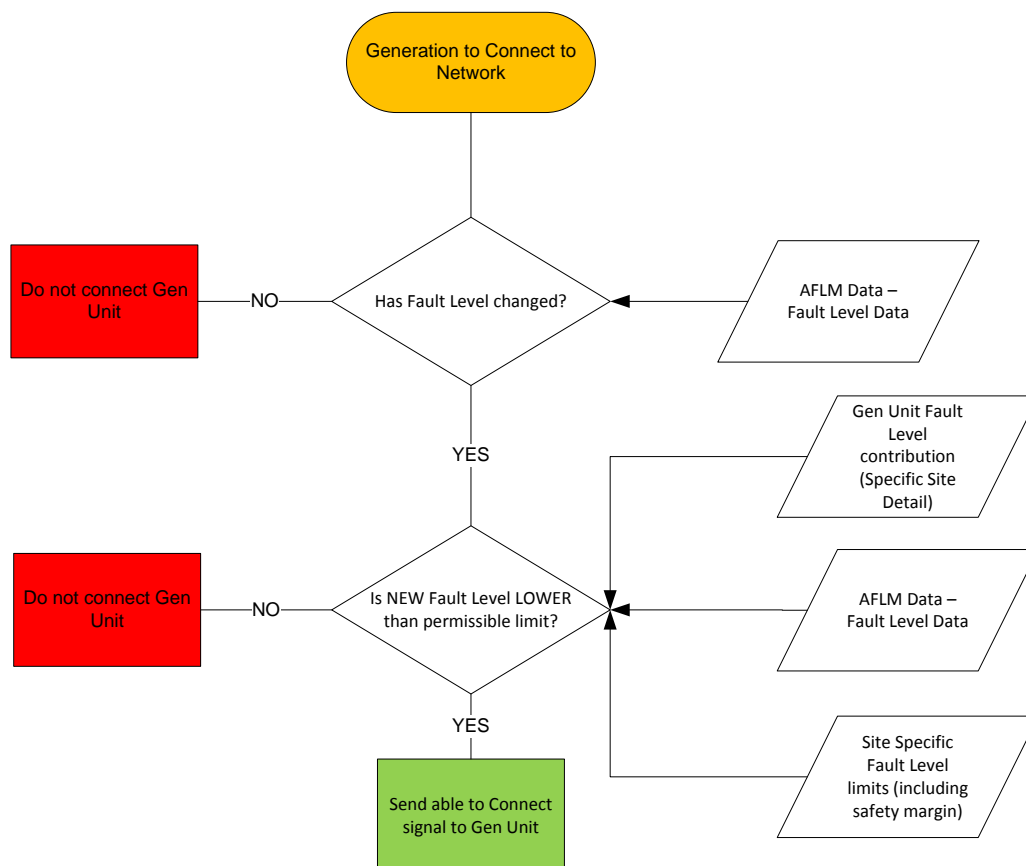


Figure 7-1: Flowchart to determine if Gen Unit can connect

As discussed in Section 6.7, WPD’s Alternative Connection Offer and Agreement documents currently in place will enable flexible generator connections relating to fault level constraints on the network, once the additional testing and trialling has been successfully completed.

8 Required modifications to the planned approach during the course of the Project

Minor modifications to the design of the AFLM device were encountered throughout the project; however, this didn't need any change to the planned approach to the project. Some of these design changes are documented below:

- Control of the AFLMS Device

Following testing of the device and significant learning about the possibilities and benefits of being able to dynamically control the regularity of the pulseclosing operations, for instances where the natural disturbances on different substations were more or less prevalent, an external control system was preferred over the Pad-Mounted Style IntelliRupter® PulseCloser's internal controls.

- Resistor

During initial testing it was identified that an impedance was required between the two phases pulseclosing in order to dampen the effects to a point where the current created and voltage dip seen would not be customer affecting.

- Location of Parallel Detection Testing

Two substations were selected, rather than the specific project substation location, Hall Green and Cheapside, where they normally ran in non-parallel and parallel operation respectively. Following this modification a more robust testing methodology was achieved as the mechanism was tested, successfully, on two distinct elements of network.

9 Significant variance in expected costs

Description	Budget (£k)	Cost (£k)	Variation (%)
Device Value	380.000	367.962	-3.3
Equipment & Installation	95.000	93.487	-1.6
Consultancy Support	180.000	175.035	-2.8
Project Management	55.000	53.845	-2.1
TOTAL	710.000	690.329	-2.8

Table 9-1: Project Costs

There were no significant variances in the project costs.

10 Lessons learnt for future Innovation Projects

10.1 Device Control

A modification through the project was the decision to use Nortech's Envoy device to control the operation of the AFLM rather than the integrated control system of the Pad-Mounted Style IntelliRupter® PulseCloser. The use of the Envoy device enabled a co-ordinated integration approach for the different devices to be included to form the AFLM device. A significant learning point was to ensure the most suitable and technically capable control system is utilised to ensure the functionality and operability of any device is maximised.

10.2 Network Impact Analysis

Prior to the physical works, relating to the project, commencing a detailed study of the proposed AFLM device's effect on the 11kV network was undertaken. The importance of carrying out such a study was highlighted through the identification that a suitably rated resistor was required to ensure that the device's effect on network parameters, current and voltage, would not be customer disturbing.

The measured effects of a new device on a network, where possible, should be understood on a variety of network conditions. A key learning point was to understand the differing values produced in terms of both the fault level and parallel detection data. A variety of 11kV conditions were considered, due to network switching, to provide fault level readings to be analysed against modelled values, as well as installing the parallel detection element of the device on two different primary substations to understand the impact on a wider location basis.

10.3 Technology and System Integration Testing

A key learning point throughout this project was the importance of testing. Through the testing of the technology, pulseclose and fault level prediction, and the full system integration the site installation work was significantly de-risked. It was understood that the individual parts of the system worked but testing of the complete system, prior to site installation, was critical to the success of the project.

Testing the technology performance in an accredited laboratory provided a considerable amount of learning as to how the device operates, how it needed to be developed for inclusion on to a real network and also the accuracy of performance, benchmarked against actual faults on a system.

Full system integration testing enabled the control and communications device (Envoy) to be fully tested in a non-network connected environment. This was carried out at the University of Manchester, as detailed in Section 5.4.3. The benefit of carrying this out on a system that was operating at 11kV but did not risk disconnecting any customers from the system was significant. This testing allowed for different regimes to be tested, along with the

performance of the system for a failure of part or all of the system, ensuring that the required response was achieved for a number of failure modes, which delivered confidence in the product to move towards site installation.

A recommendation is that for all devices that have an effect on network parameters, such as voltage or current, should, as a full system, be tested in a laboratory environment to reduce the risk of mal operation and to better understand the performance of the system under different failure modes.

Also, utilising test facilities outside the UK isn't as expensive or complex as initially envisioned. It is more critical to ensure that a device is appropriately tested in a suitable facility that can carry out and rigorously document the tests required.

10.4 Network Modelling Requirements

Learning from the trialling of the AFLM device connected to the network has shown that, as proposed at the project's outset, the fault level on the 11kV network varies throughout the day, which is driven by the changing power flows on the system.

Further work is required to investigate the differences between the modelled and monitored values and where the differences originate. A significant element is the MVA/MVA fault infeed value of the demand and generation connected to the network.

Allowing additional time for modelling would have provided greater clarity as to the performance of the AFLM device.

10.5 Team Structure

Having a project team with a diverse set of skills has been integral to the success of the project.

Using a large engineering consultancy, Parsons Brinckerhoff, brought a breadth of knowledge to the project and the ability to quickly access individuals with the skills required at different phases as the project, such as an expert in high power laboratory testing.

Working with project partners like Nortech and Outram Research, as SMEs, enabled changes to designs and processes to be completed quickly; as they had the flexibility to adapt to the project's needs.

S&C Electric enabled a flexible approach to the high power testing as part of the project and provided significant experience and a pro-active outlook to enable the required modifications for the requirements of the project.

11 Planned implementation

The AFLM device has been tested on a single substation for a 12-month period. This learning has shown significant promise to be further developed, to better understand the real-time fault level of an 11kV network. Understanding the fault level on a wider variety of substations, with different load and generation type that have varying MVA/MVA infeed values would enable DNO modelling practices and procedures to be developed and updated. Therefore, this work is to be transferred to WPD's LCNF Tier-2 project, FlexDGrid.

The work carried out in this LCNF Tier-1 project has significantly de-risked the implementation of the AFLM device for FlexDGrid. Additional work is required to facilitate the calculation of RMS values at a variety of time domains, such as 70ms and 90ms in order to accurately represent the break fault level of a system.

12 Facilitate Replication

The AFLM device, using a mechanical disturbance mechanism (Pad-Mounted Style IntelliRupter® PulseCloser – pulseclose operation), is fully developed. As discussed in this document further work is to be carried out to confirm and further develop the accuracy of the fault level values provided.

Two policies are now in place within WPD. The first is an Engineering Specification that details the technical requirements and criteria of the 11kV device. The second is a Standard Technique, which is an application and connection guidance document, providing detail on what is required to integrate an AFLM device on to an 11kV, such as:

- Connection requirements on to the 11kV network;
- Integration of the device with existing measurement equipment on the proposed site; and
- Protection philosophy for the device and the network.

These policies, on request, have been made available to all DNOs.

Following the production of policies this has allowed the AFLM device to be documented in WPD's standard asset register system CROWN, which enables a standard maintenance regime to be developed and carried out.

Within Section 6.5 a methodology has been presented to determine and analyse the results presented by the AFLM device. This methodology will enable other DNOs or installers of an AFLM device to understand and interpret the results produced.

There has been no relevant foreground IPR registered as part of this project.

13 Contact details

Jonathan Berry
Innovation and Low Carbon Networks Engineer
Western Power Distribution
Fourth Floor
Toll End Road
Tipton
DY4 0HH
e-mail: wpdinnovation@westernpower.co.uk
telephone: 0121 6 239 459
website: www.westernpowerinnovation.co.uk

14 Appendices

- A. LCN Fund Registration Pro-forma
- B. Dissemination
 - 1. CIRED 2013 Paper
 - 2. CIRED 2013 Poster
- C. 11kV Single Line Diagram
- D. Resistor Rating Plate
- E. System Architecture Diagram
- F. Site Design
- G. AFLM Access Signage

Appendix A – REGISTRATION PRO-FORMA



Registration Date

First Tier Pro-forma

Notes on completion

Before completing this form, please refer to the LCN Fund Governance Document. Please use the default font (Verdana font size 9) in your submission, the text entry areas are predetermined and should not be changed. Please ensure all content is contained within the boundaries of the text areas. The full-completed submission should not exceed 4 pages in total.

Project title

--

DNO

--

Participant DNOs

--

Project summary

--

Problem(s)

Please provide a narrative which explains the Problem(s) which being addressed by the Project.

--

Problem(s) continued**Method(s)**

This section should set out the Method or Methods that will be trialled in order to solve the Problem. The type of Method should be identified where possible e.g. technical or commercial.

Scope and Objectives

Please describe the scope and objectives of the Project should be clearly defined including the benefits which should directly accrue to the Distribution System.

Success Criteria

Please give details of how the DNO will evaluate whether the Project has been successful.

TRL	
<i>This should be between 5-8 to be eligible for Tier 1 Funds.</i>	
Predicted start and end dates.	
<i>DNOs should provide an estimate of the expected project starting and completion dates.</i>	
Start Date:	End Date:
Project partners and external funders	
<i>Please give details of actual or potential Project Partners and External Funding Support as appropriate</i>	
Potential for new learning	
<i>Detail what the parties hope to learn and how the learning will be disseminated.</i>	
Risks	
<i>The DNO should highlight any material, known risks that could impact the Project's costs and/or programmes.</i>	
Scale of project	
<i>Please justify the scale of the Project. In particular, the DNO should explain why there would be less potential for new learning if the Project were a smaller scale.</i>	
Geographical area	
<i>Details of where the Trial(s) will take place. If the Project is a collaboration, the DNO area(a) in which the Trial(s) take place should be identified.</i>	

Estimated Project funding			
<i>An indication of the revenue allowed for within the DPCR5 settlement that is likely to be saved as a result of the project.</i>		<i>An indication of the total Allowable First Tier Project Expenditure that the DNO expects to reclaim the for the whole project.</i>	
Revenue allowed for in the DPCR5 Settlement (£)		Indicative total Allowable First Tier Project Expenditure (£)	
Please tick if the project involves making payments to related undertakings			<input type="checkbox"/>
<i>The DNO must set out all payments that it proposes to make to itself or any Related Undertaking. Further, if a payment is to be made to any Related Undertaking that is a Distribution System User, the DNO must demonstrate that it has offered the same terms to similar Distribution System Users on the part of the network that is within the Project boundary and has used reasonable endeavours to identify such Users.</i>			
Please tick if the project conforms to the default IPR arrangements set out in the LCN Fund Governance Document?			<input type="checkbox"/>
<i>The DNO should indicate if the Project does not conform to the default IPR conditions. A justification for alternative arrangements and why the Project should still be approved must be provided, in accordance with paragraph 2.18 of the Governance Document.</i>			
Please tick if you do not consent to the First tier pro-forma being published in full.			<input type="checkbox"/>
If you do not consent please identify any information in the completed First Tier LCN Project Registration that you do not wish to be published.			
<i>The DNO must demonstrate that it (or its Project Partners) will face commercial harm from its disclosure and that information is considered eligible for exemption under the Freedom of Information Act 2000 or the Environmental Information Regulations 2004.</i>			
<i>All information submitted within the First Tier LCN Project Registration Pro-forma will be made available on the Ofgem website, unless Ofgem has agreed otherwise as part of the Registration process set out above.</i>			

Appendix B.1 – CIRED PAPER

IMPLEMENTATION OF AN ACTIVE FAULT LEVEL MONITORING SYSTEM FOR DISTRIBUTED GENERATION INTEGRATION

Jonathan BERRY

Western Power Distribution – UK

jberry@westernpower.co.uk

Samuel JUPE

Parsons Brinckerhoff – UK

JupeS@pbworld.com

Mike MEISINGER

S&C Electric Europe Ltd – UK

mike.meisinger@sandc.com

John OUTRAM

Outram Research Limited – UK

johnoutram@orll.com

ABSTRACT

This paper describes the practical implementation of an active fault level monitoring system to facilitate the integration of distributed generation (DG) within 11kV distribution networks. The system is being tested in the UK by a consortium comprising Western Power Distribution, Parsons Brinckerhoff, S&C Electric Company and Outram Research Limited. Laboratory tests were conducted for a variety of system fault levels and network running arrangements. Results from the laboratory tests showed that the fault level was consistently predicted to be within 4.5% of measured three-phase faults applied to the system.

INTRODUCTION

The increase in fault level contribution from rotating machines is a significant barrier to the connection of new synchronous generators, for example combined heat and power (CHP) units, within 11kV networks [1]. In order to ensure the integrity of the power system, fault levels need to be maintained below equipment ratings. Current network reinforcement options would involve the replacement of switchgear with higher-rated equipment or replacement of transformers with a higher impedance core. These solutions often entail significant capital expenditure and may involve long lead times for installation, delaying the connection time of generators on to the network.

Fault level is a measure of electrical stress when an unintentional conducting path (fault) causes a short circuit. This causes potentially very high fault currents to flow in the electricity lines, cables and substation equipment. The amount of fault current varies from location to location; depending on how electrically close the fault is to the energy sources (for example a transformer or rotating plant).

This paper describes the development and testing of an active fault level monitoring system to facilitate the integration of distributed generation (DG) within 11kV distribution networks. The system is being laboratory tested and subsequently field tested in the UK by a consortium comprising Western Power Distribution, Parsons Brinckerhoff, S&C Electric Company and Outram Research Limited.

The UK electricity network regulator, Ofgem, has established the Low Carbon Networks (LCN) Fund to support projects, sponsored by the distribution network operators (DNOs), to trial new technology, operating and commercial arrangements [2]. For the purposes of this project, through the LCN Fund [3], two existing products have been combined to provide fault level predictions in real-time: S&C Electric's IntelliRupter[®] PulseCloser and Outram Research Limited's PM7000 Fault Level Monitor (FLM). An IntelliRupter[®] PulseCloser is an intelligent electric switching device that, in normal operation, is used to detect, interrupt, and isolate faults. The PM7000 is an electricity network device that monitors power quality. The PM7000 provides a hardware platform for fault level monitoring and prediction algorithms.

This project aims to demonstrate the feasibility of real-time fault level predictions to facilitate quicker and more cost-effective DG connections, permitting an increase in power supplied from renewable energy sources whilst managing the fault level to avoid exceeding equipment ratings. Moreover, the system could allow the network to be operated in a more secure configuration. In addition, the project will also improve the practical understanding of how close simulated fault levels are to actual values. System studies can result in pessimistic fault level calculations [4] and an active monitoring system overcomes the drawbacks associated with passive monitoring techniques.

BACKGROUND

Driven by UK Government policy [5], the increasing requirement to connect new DG (such as renewable and CHP) to distribution networks will impact on the operation of the network in a number of areas including voltage levels and fault levels. In some cases this could result in the fault level exceeding the design limit of the network equipment unless actions are taken to mitigate this issue [6].

The contribution of induction machines to short-circuit currents can be significant and must be considered when evaluating system fault levels. Standard procedures for calculating short circuit currents of induction machines require detailed machine data, which may not be available. Moreover, the results obtained using standards may lead to conservative design and unnecessary expense [4].

At present, industry standards use assumed 33kV fault in-feed values of 1 MVA per MVA of aggregate low voltage network connected winter demand and 2.6 MVA per MVA of aggregate winter demand connected at 11kV. These values relate to a complete loss of supply voltage to the motors [7]. The industry currently uses conservative models to calculate fault level. Little work has been done in the past to justify the calculated values of short circuit currents and there is some belief that the values obtained are unduly pessimistic [8]. Calculations in IEC60909 tend to include a safety margin of up to 10% [9]. It is not practical to apply a full short circuit in order to measure the fault current. Therefore, at present, there is limited visibility of true network fault level and how this changes on a real-time basis.

Fault level monitoring techniques can generally be categorised as passive, active or hybrid. Passive techniques use naturally occurring system disturbances to estimate the fault level [10]-[12]. Devices that solely rely on naturally occurring system disturbances have the inherent advantages of not needing ancillary hardware and consequently can be used at other voltage levels. They are potentially adequate for planning processes [13], however; these types of devices have limited application in the real-time management of fault level. This is because the occurrence of natural disturbances within the electricity network is unpredictable and, on this basis, insufficient to guarantee the regular fault level measurements that would be needed in a real-time monitoring system. This limitation is overcome by devices that use active or hybrid fault level monitoring techniques. Active techniques create temporary but reduced short circuit currents on a periodic basis or inject harmonic currents around the frequency band of the fundamental frequency [14]. Hybrid techniques [15] use artificial and controlled network disturbances, potentially supplemented with natural disturbances [3], to measure the fault level.

Currently there is a limited range of devices available that allow any of these techniques to be deployed within distribution networks.

OVERVIEW OF THE REAL-TIME FAULT LEVEL MONITORING SYSTEM

This paper describes the implementation of a hybrid device to measure fault level in which two existing products have been combined to provide fault level predictions in real-time: S&C Electric's IntelliRupter and Outram Research Limited's PM7000 Fault Level Monitor.

Using the control functionality of the IntelliRupter, an artificial change in network operating conditions is created. The switching operation has the same effect on the electricity network as a motor or generator connecting to the network and being switched on and off. The change in network running conditions, whether natural or artificial, is detected by the PM7000 Fault Level Monitor and the fault level is predicted. The system is expected to deliver a fault level monitoring solution for 11kV electricity networks that, due to the IntelliRupter's pulse-closing functionality, will not affect the quality of supply delivered to electricity end users (consumers). For this reason, a 20Ω inductance was introduced into the IntelliRupter switching circuit, as shown in Figure 1.

TEST PROCEDURE

11kV, 50Hz factory acceptance tests were carried out at the S&C Advanced Technology Center in Chicago during July 2012. The factory acceptance test set-up is given in Figure 1. In order to represent a variety of credible network operating conditions, the testing procedure took place in the following way: The system was configured through the closure of switches CB₁ and CB₂ to apply the IntelliRupter and 200A load. For tests without the 200A load connected, CB₂ and switch S₂ were closed. The generator, G, represents a fault in-feed source that could be varied (5.09kA – 13.1kA symmetrical RMS) and injected into the system by the closure of making switch MS₁.

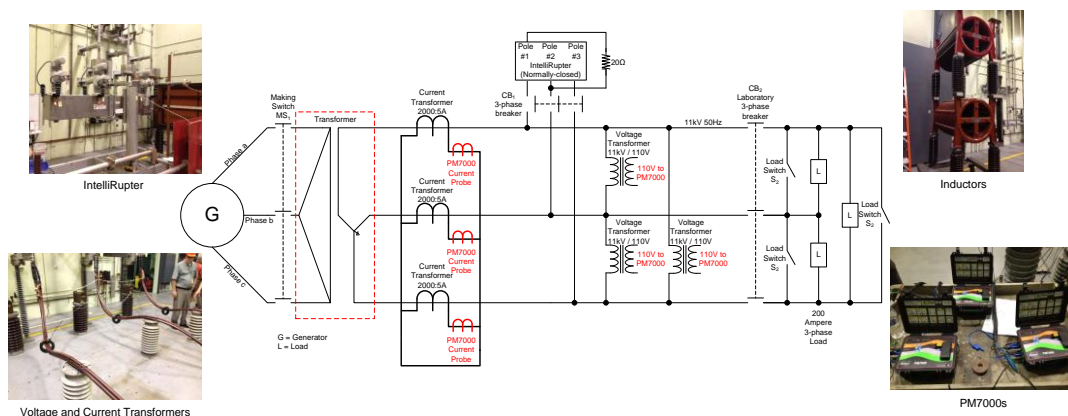


Figure 1: Factory acceptance test set-up

The generation source and transformer configuration were varied to provide a range of different X/R ratios (13.3 – 30.0). With the fault in-feed source applied to the network, the IntelliRupter performed a controlled switching operation to connect and disconnect a 20Ω inductance across phases a and b for two ¼ cycles (5ms).

For each test configuration, the PM7000 was used to monitor the voltage and current waveforms, using voltage transformer (VT) and current transformer (CT) sensors to detect the system disturbances introduced by the IntelliRupter operation. In this way, the fault level monitoring system was used to predict the fault level of the test network. In order to validate the accuracy of the fault level monitoring system predictions, a three-phase fault was applied to the network for each test configuration and the predictions were directly compared to the measured fault level.

TESTING RESULTS

Fault level prediction

A selection of test results are summarised in Table 1. The greatest difference between measured and predicted fault levels was 4.5%. This result occurred for the 90ms RMS fault level prediction, when the test network was configured with an X/R ratio of 30 and 200A load was connected to the

system. Across a range of test conditions, the average percentage difference for both 10ms peak and 90ms RMS fault level predictions was 2.7%.

Power quality effects

In order to ensure that the fault level monitoring system complies with power quality standards for voltage fluctuations (ER P28) [16] and harmonic distortion (ER G5/4-1) [17], the waveforms were observed and analysed. As given in Table 1, the greatest voltage step change was 2.76% for the system conditions with a measured 10ms peak fault level of 31.34kA without the 200A load connected. ER P28 prescribes a general limit of 3% on the allowable magnitude of voltage changes. The average percentage voltage deviation was 1.84% for the test cases considered. As given in Figure 2, the change in total harmonic distortion (THD) varies between 2.2% and 4.7% for the a-b and c-b phases of the network, respectively.

DISCUSSION

The integration of the PM7000 Fault Level Monitor and IntelliRupter within 11kV networks represents a novel step, which provides the total fault current contribution, without necessarily needing the exact detail of the elements which contribute to this total. The equipment overcomes the drawbacks associated with other passive and active devices.

X/R Ratio	Switching Operation	Measured Fault Current		Predicted Fault Current		% Difference		Maximum Voltage (kV)	Minimum Voltage (kV)	Voltage fluctuation (%)
		Peak @ 10ms (kA)	RMS @ 90ms (kA)	Peak @ 10ms (kA)	RMS @ 90ms (kA)	Peak @ 10ms (kA)	RMS @ 90ms (kA)			
30	With 200A load connected	13.83	5.10	13.37	4.87	3.33%	4.46%	6.417	6.353	1.00%
30	Without 200A load connected	13.83	5.10	13.50	5.24	2.37%	-2.70%	6.447	6.384	0.98%
13.3	With 200A load connected	12.88	5.09	13.27	4.95	-2.99%	2.79%	6.289	6.193	1.53%
13.3	Without 200A load connected	12.88	5.09	13.38	5.03	-3.88%	1.32%	6.453	6.298	2.40%
23	With 200A load connected	31.34	13.10	30.40	13.50	3.01%	-3.38%	6.298	6.150	2.35%
23	Without 200A load connected	31.34	13.10	31.02	12.87	1.01%	1.74%	6.451	6.273	2.76%

Table 1: Fault level prediction results and voltage fluctuation readings

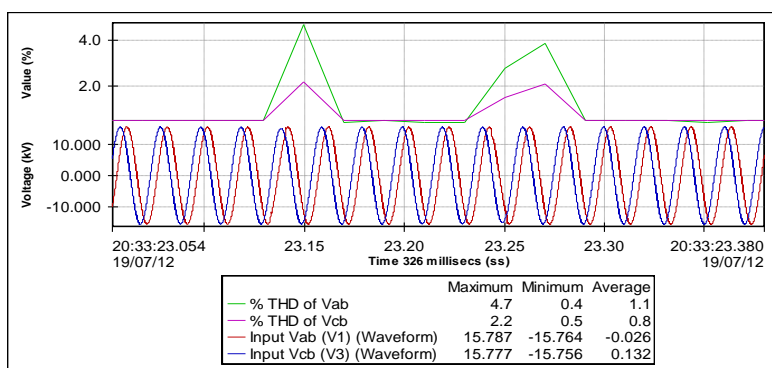


Figure 2: Total harmonic distortion of the wave form

High precision VTs and CTs allow the PM7000 to monitor voltage and current waveforms with a high degree of accuracy. The fully supported PM7000 hardware platform provides powerful processing capability, allowing the three-phase fault contribution to be monitored. The IntelliRupter provides the PM7000 Fault Level Monitor with controlled, non-customer-affecting, disturbances that overcome the sole reliance on naturally occurring system disturbances. For the worst case voltage fluctuation and assuming background flicker levels to be 50% of the network limit (typical of the real network environment), the acceptable repetition rate of controlled disturbances is 360 seconds. The THD values presented in Figure 2 are instantaneous values. When considered over a ten-minute period (as prescribed in G5/4-1) the averaged effect on THD would be negligible.

CONCLUSION

The laboratory tests have demonstrated that the IntelliRupter and PM7000 devices can be successfully combined and used to provide a fault level prediction within 4.5% of the measured fault level for the test cases considered. Using control functionality of the IntelliRupter to provide a disturbance, there is the possibility of predicting the fault level in real-time without causing any customer disturbance.

Since there is limited capability, at present, to monitor fault levels in 11kV electricity networks, and the maximum acceptable measurement error is considered to be $\pm 5\%$ of the actual fault level value, the results are considered to be highly encouraging.

The next steps in the project are to characterise the network and to use a novel integration process to monitor fault levels in an 11kV urban substation in the UK. This will form the technical basis of commercial contracts that will allow distribution system fault levels to be managed in real-time through switching operations and the connection / disconnection of additional generation.

ACKNOWLEDGMENTS

The authors would like to thank the following for their help during the fault level monitoring system tests: Supporting staff at Western Power Distribution; Martin Snell and David Hawkins at Parsons Brinckerhoff; Chris Bevan, Jim Niemira, Terry Bellei and the staff at the S&C Advanced Technology Center, Chicago, Illinois, USA.

REFERENCES

- [1] A. Collinson, F. Dai, A. Beddoes and J. Crabtree, 2003, *Solutions for the connection and operation of distributed generation*, Crown, London, UK.
- [2] Ofgem, 2012, *Low Carbon Networks Fund Governance Document (Version 5)*, Ofgem, London, UK.
- [3] Western Power Distribution, 2012, *Implementation of an active fault level management scheme (First Tier Pro-forma)*, Ofgem, London, UK.
- [4] G. E. Williamson, N. Jenkins, G. C. Cornfield, 1996, "Use of naturally occurring system disturbances to estimate the fault current contribution of induction motors", *IEE Proc.-Gener. Transm. Distrib.* Vol 143, No. 3, 243 – 248.
- [5] Department of Energy and Climate Change, 2011, *Carbon Plan: Delivering our low carbon future*, Crown, London, UK.
- [6] KEMA Ltd, 2005, *The contribution to distribution network fault levels from the connection of distributed generation*, Crown, London, UK.
- [7] Energy Networks Association, 1992, *Engineering Recommendation G74: Procedure to meet the requirements on IEC 909 for the calculation of short circuit currents*, ENA, London, UK.
- [8] G. C. Cornfield, 1993, "Estimating system fault level from naturally occurring disturbances", *Proceedings IEE Colloquium on Instrumentation in the Electrical Supply Industry*, 13/1 – 13/4
- [9] International Electrotechnical Commission, 2000, *IEC TR 60909-4: Examples for the calculation of short circuit currents*, IEC, Geneva, Switzerland.
- [10] S. Conner and A. J. Cruden, 2012, "Development of an Algorithm utilising a Digital Signal Controller to accurately determine in near "Real-Time" the Fault Level in DG", *Proceedings 47th International Universities' Power Engineering Conference*.
- [11] K. O. H. Pedersen, A. H. Nielsen and N. K. Poulsen, 2003, "Short-circuit impedance measurement", *IEE Proc.-Gener. Transm. Distrib.*, vol. 150, no.2, 169-174.
- [12] S. Yang and F. Yang, 2009, "Algorithm Development for Electricity Supply Fault Level Monitor Applied in Distribution Generation", *Proceedings International Conference on Electrical Engineering*, 1-6.
- [13] Scottish Power, 2011, *IFI Report 2010/11*, Scottish Power, Glasgow, Scotland.
- [14] E. S. Ibrahim, 2004, "Experimental Measurements of Fault Level For Sceco West, Kingdom of Saudi Arabia", *JKAU: Eng. Sci.*, vol.15, no.1, 83-102.
- [15] EPRI, 2010, *Patent Application 20100085065: Passive Agent System Impedance Monitoring Station and Method*, US Patent and Trademark Office.
- [16] Energy Networks Association, 1989, *Engineering Recommendation P28: Planning limits for voltage fluctuations*, ENA, London, UK.
- [17] Energy Networks Association, 2005, *Engineering Recommendation G5/4-1: Planning levels for harmonic voltage distortion and the connection of non-linear equipment to transmission systems and distribution network in the UK*, ENA, London, UK.

Appendix B.2 – CIRED POSTER



IMPLEMENTATION OF AN ACTIVE FAULT LEVEL MONITORING SYSTEM FOR DISTRIBUTED GENERATION INTEGRATION

Paper Number 0619

Jonathan Berry
Western Power Distribution, UK

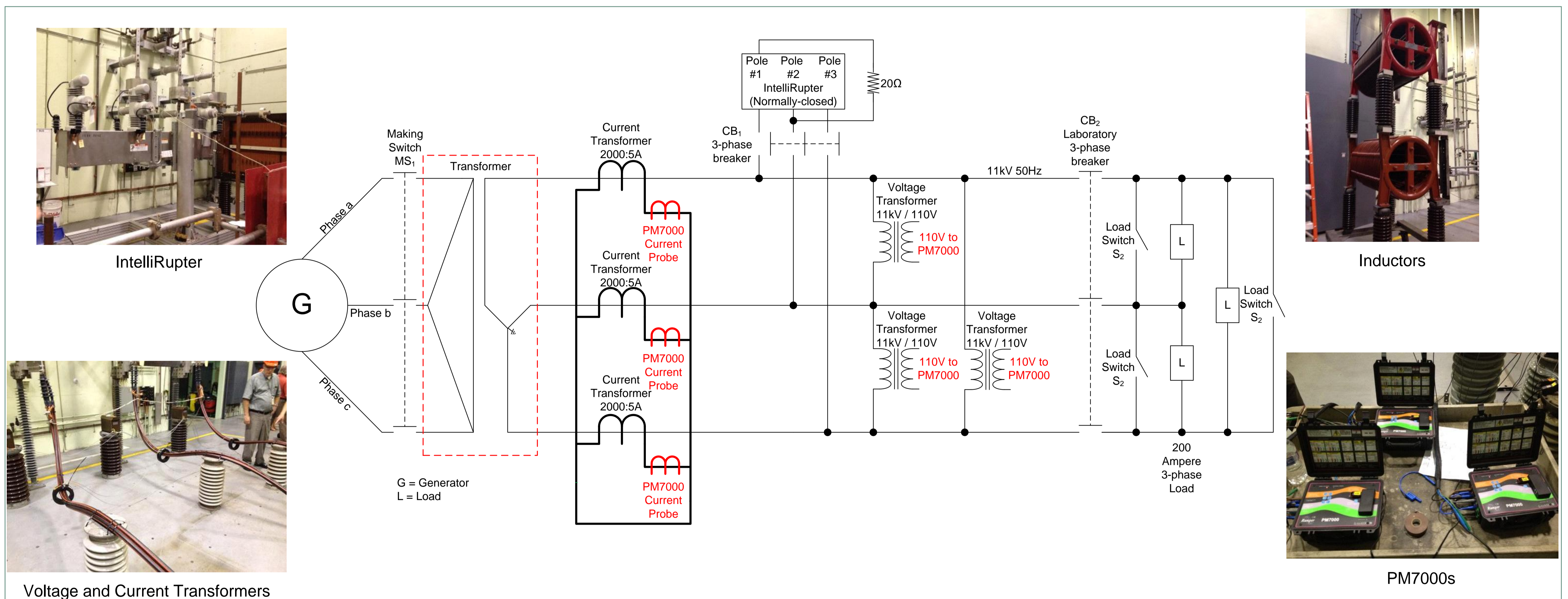
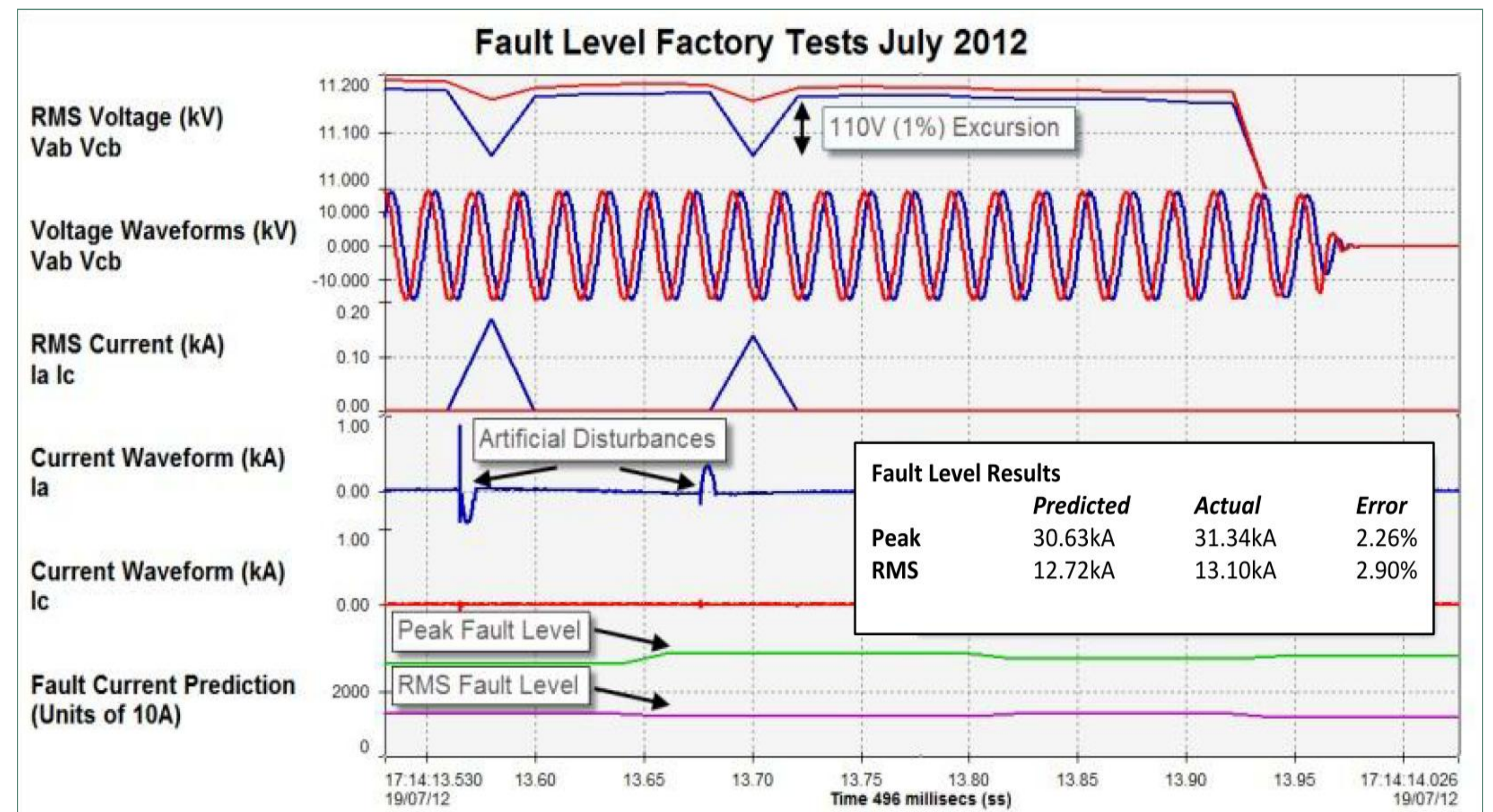
Samuel Jupe
Parsons Brinckerhoff, UK

Mike Meisinger
S&C Electric Europe Ltd, UK

John Outram
Outram Research Limited, UK

Project Overview

- This poster describes the practical implementation of an active fault level monitoring system to facilitate the integration of distributed generation within 11kV distribution networks.
- Results from the laboratory tests showed that the fault level was consistently predicted to be within 4.5% of measured three-phase faults applied to the system.
- Based on the laboratory tests the fault level monitoring system will be taken forwards to 11kV network field trials from December 2013 onwards.

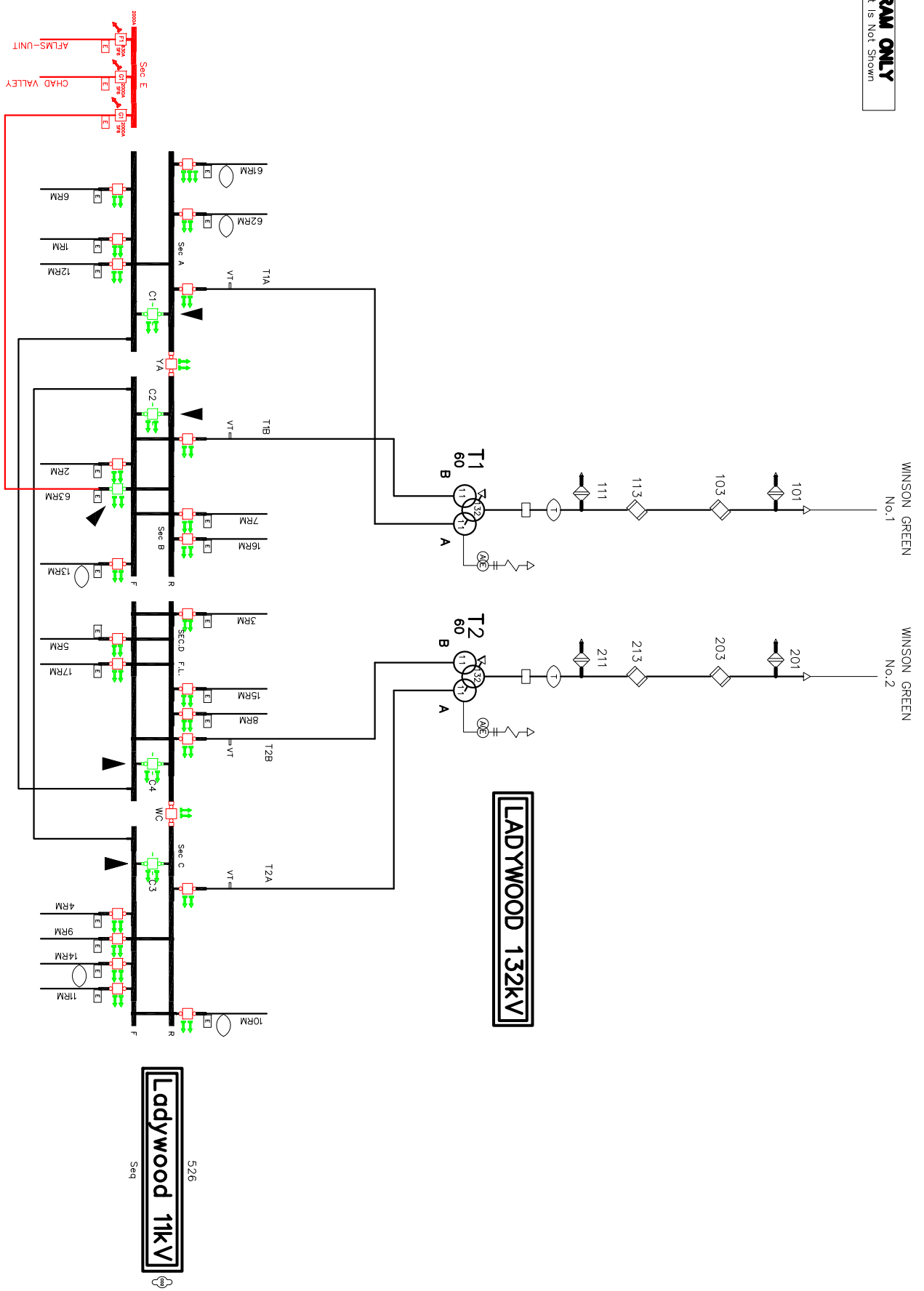


X/R Ratio	Switching Operation	Measured Fault Current		Predicted Fault Current		% Difference		Maximum Voltage (kV)	Minimum Voltage (kV)	Voltage fluctuation (%)
		Peak @ 10ms (kA)	RMS @ 90ms (kA)	Peak @ 10ms (kA)	RMS @ 90ms (kA)	Peak @ 10ms (kA)	RMS @ 90ms (kA)			
30	With 200A load connected	13.83	5.10	13.37	4.87	3.33%	4.46%	6.417	6.353	1.00%
30	Without 200A load connected	13.83	5.10	13.50	5.24	2.37%	-2.70%	6.447	6.384	0.98%
13.3	With 200A load connected	12.88	5.09	13.27	4.95	-2.99%	2.79%	6.289	6.193	1.53%
13.3	Without 200A load connected	12.88	5.09	13.38	5.03	-3.88%	1.32%	6.453	6.298	2.40%
23	With 200A load connected	31.34	13.10	30.40	13.50	3.01%	-3.38%	6.298	6.150	2.35%
23	Without 200A load connected	31.34	13.10	31.02	12.87	1.01%	1.74%	6.451	6.273	2.76%



Appendix C – NETWORK SINGLE LINE DIAGRAM

SCHEMATIC DIAGRAM ONLY
Physical Location Of Plant Is Not Shown



REV. 6	10.08.2008	SM	CHECKED	APPROVED	FED ON SECTION B 63RM NOW ON REAR BUSBAR
REV. 7	01.04.2009	SM	CHECKED	APPROVED	FED ON SECTION C MOVED FROM REAR TO FRONT BUSBAR
REV. 8	12.03.2013	DF	CHECKED	APPROVED	NEW SECTION-E BUSBAR ADDED TO 63RM
REV. 4	28.08.2007	SM	CHECKED	APPROVED	CB ON SECTION D, NOW FED FROM FRONT BUSBAR
REV. 5	08.11.2007	SM	CHECKED	APPROVED	CB ON SECTION B NOW FED FROM FRONT BUSBAR, CB ON SECTION D NOW FED FROM REAR BUSBAR

NOTES:	DRAWN	MAN	15.07.2002
	CHECKED	AD	15.07.2002
	APPROVED	N.T.S	

LADYWOOD 132/11kV SUBSTATION
SUBSTATION LINE DIAGRAM

WESTERN POWER DISTRIBUTION
Serving the Midlands, South West and Wales

DRAWING NO. BS26-100-003

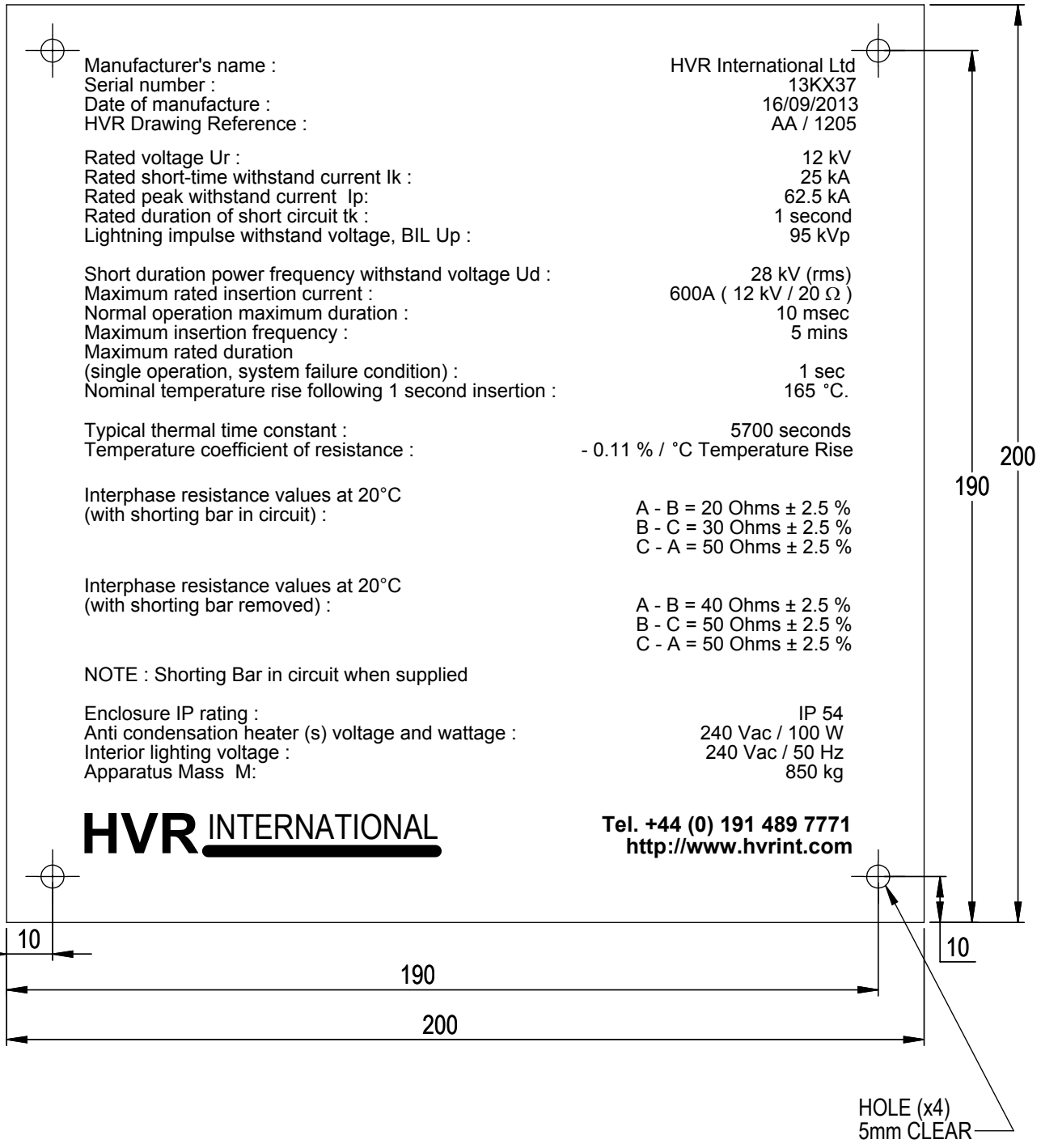
REV. 8

SHEET 1 of 1



Appendix D – RESISTOR RATING PLATE

RATING PLATE :



MATERIAL : STAINLESS STEEL - 1.2mm THICK

HVR
INTERNATIONAL

HVR INTERNATIONAL LTD
 Bede Industrial Estate
 Jarrow
 Tyne & Wear
 NE32 3EN

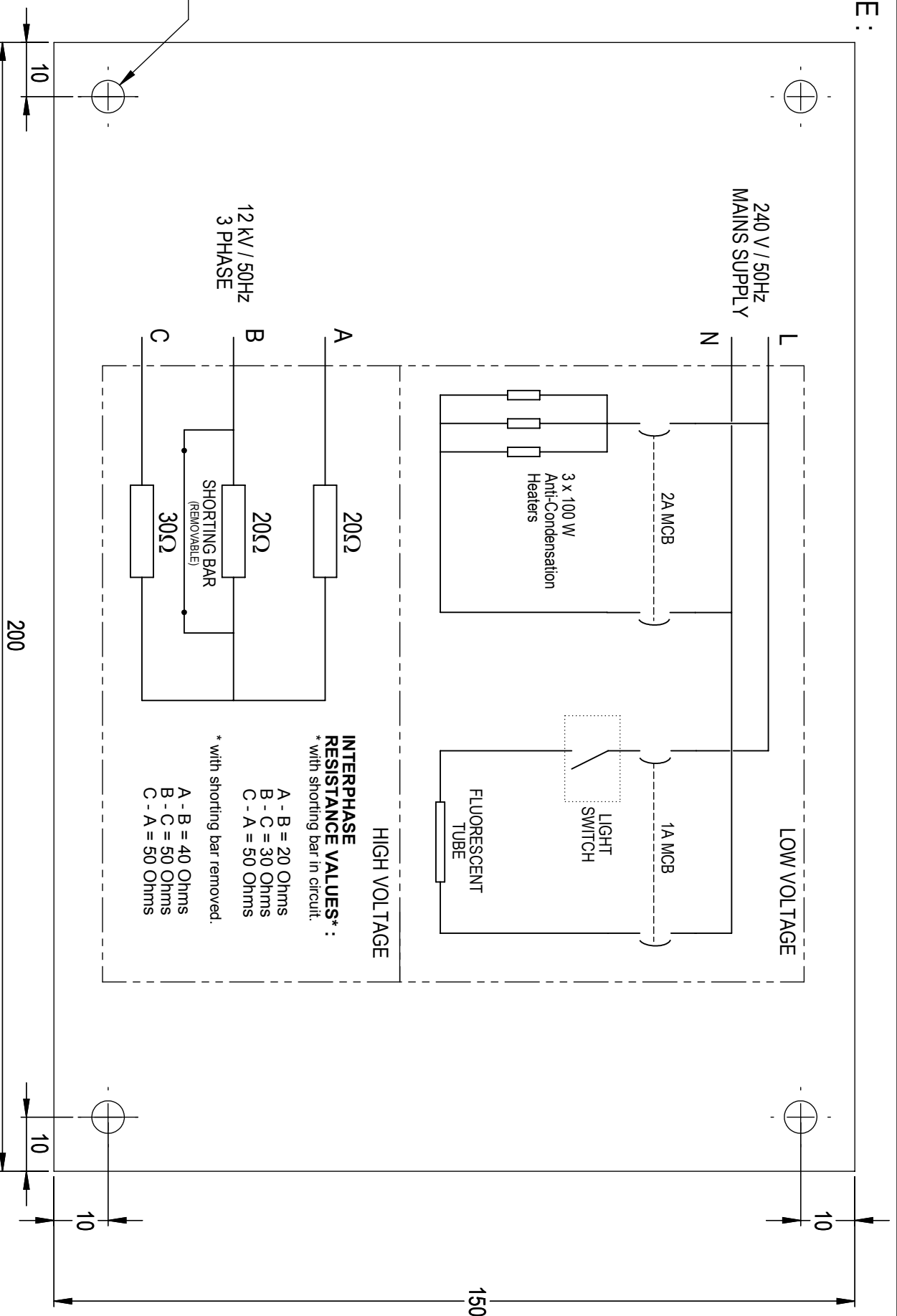
RATING PLATE

WESTERN POWER DISTRIBUTION

	SCALE:1:6	DATE:	DRAWN BY :	CHECKED BY :	SK / 2275 SHEET 3 OF 5
	DIMENSIONS IN mm	16/07/14	John Orr	Martin Williams	

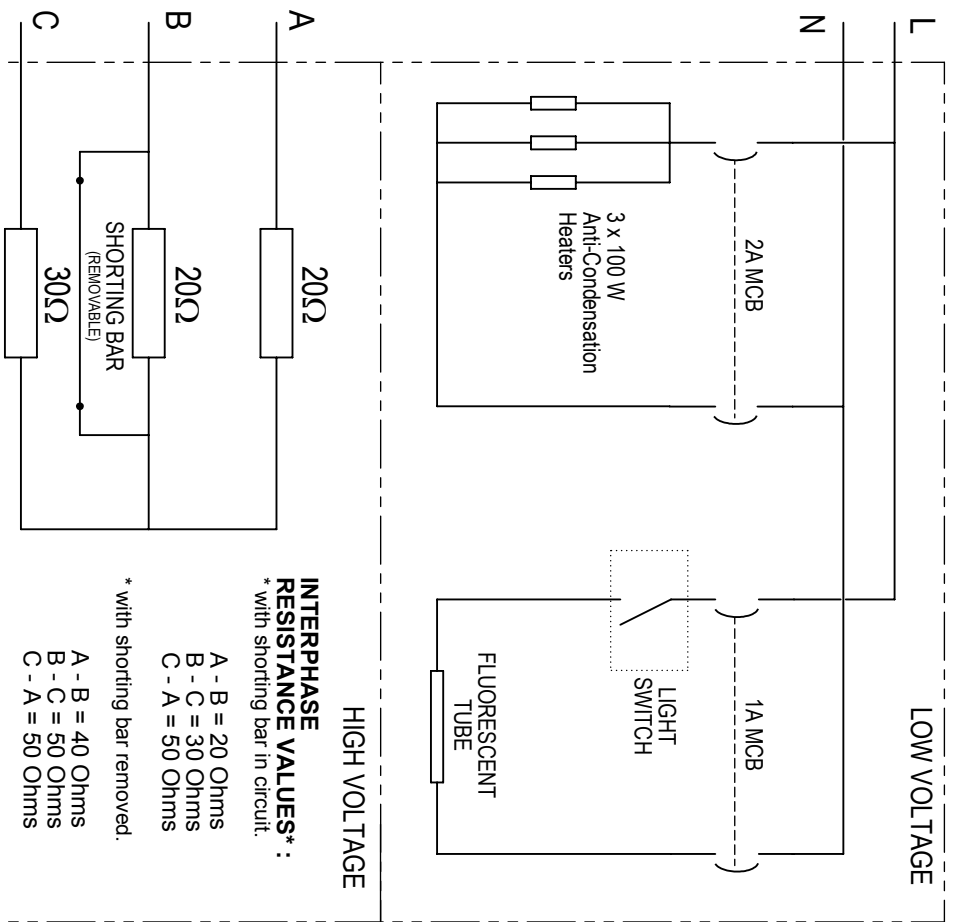
CIRCUIT PLATE :

MATERIAL :
STAINLESS STEEL
 -1.2mm THICK



12 kV / 50Hz
 3 PHASE

240 V / 50Hz
 MAINS SUPPLY



INTERPHASE RESISTANCE VALUES* :
 * with shorting bar in circuit.

A - B = 20 Ohms
 B - C = 30 Ohms
 C - A = 50 Ohms

* with shorting bar removed.

A - B = 40 Ohms
 B - C = 50 Ohms
 C - A = 50 Ohms

HOLES (X4)
 M6 CLEAR

Bede Industrial Estate
 Jarrow
 Tyne & Wear
 NE32 3EN

Tel : +44 (0) 191 489 7771
 Fax : +44 (0) 191 483 9501

Website : <http://www.hvrint.com>
 E-mail : applications@hvrint.com

HVVR
INTERNATIONAL

SCALE: 1:10

DRAWN

John Orr

CHECKED

Martin Williams

DATE

16/07/14

ISSUE

THREE

CIRCUIT PLATE

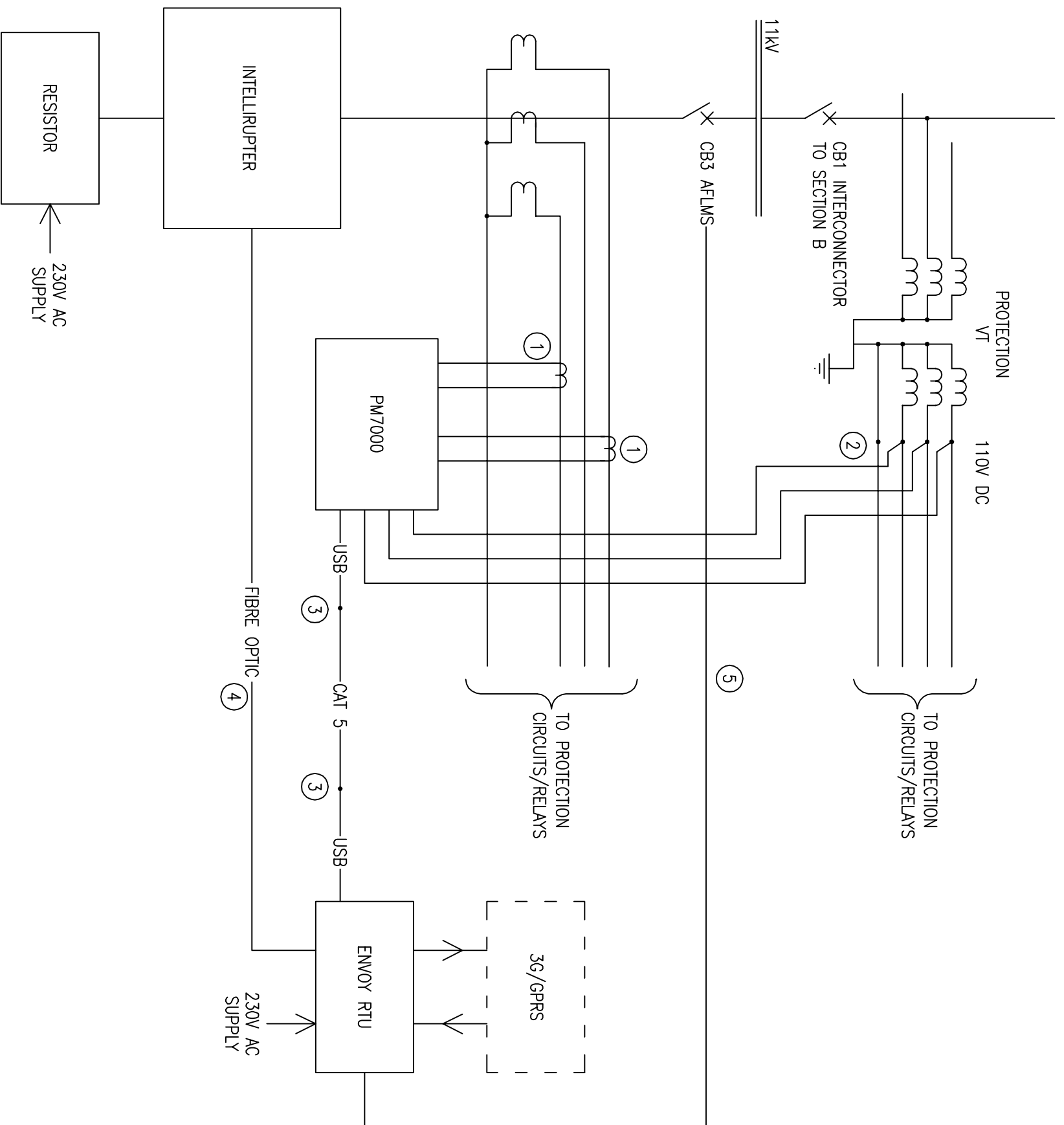
WESTERN POWER DISTRIBUTION

DIMENSIONS
 IN mm

SK / 2275
 SHEET 4 OF 5



Appendix E – SYSTEM ARCHITECTURE DIAGRAM



- Notes**
- ① Clip on CT
 - ② Voltage inputs from VT terminal block
 - ③ USB to CAT 5 converter
 - ④ Fibre Optic cable
 - ⑤ Multicore Cable – Circuit Breaker Status information

REV. 1	08/10/13	PAE	REV. 2		REV. 3	
CHECKED	NM		CHECKED		CHECKED	
APPROVED	SJ		APPROVED		APPROVED	
FIRST ISSUE						

DRAWN	PAE	08/10/13
CHECKED	NM	08/10/13
APPROVED	SJ	24/10/13
SCALE	NTS	

LADYWOOD SUBSTATION
FLM CONTROL SCHEMATIC DIAGRAM

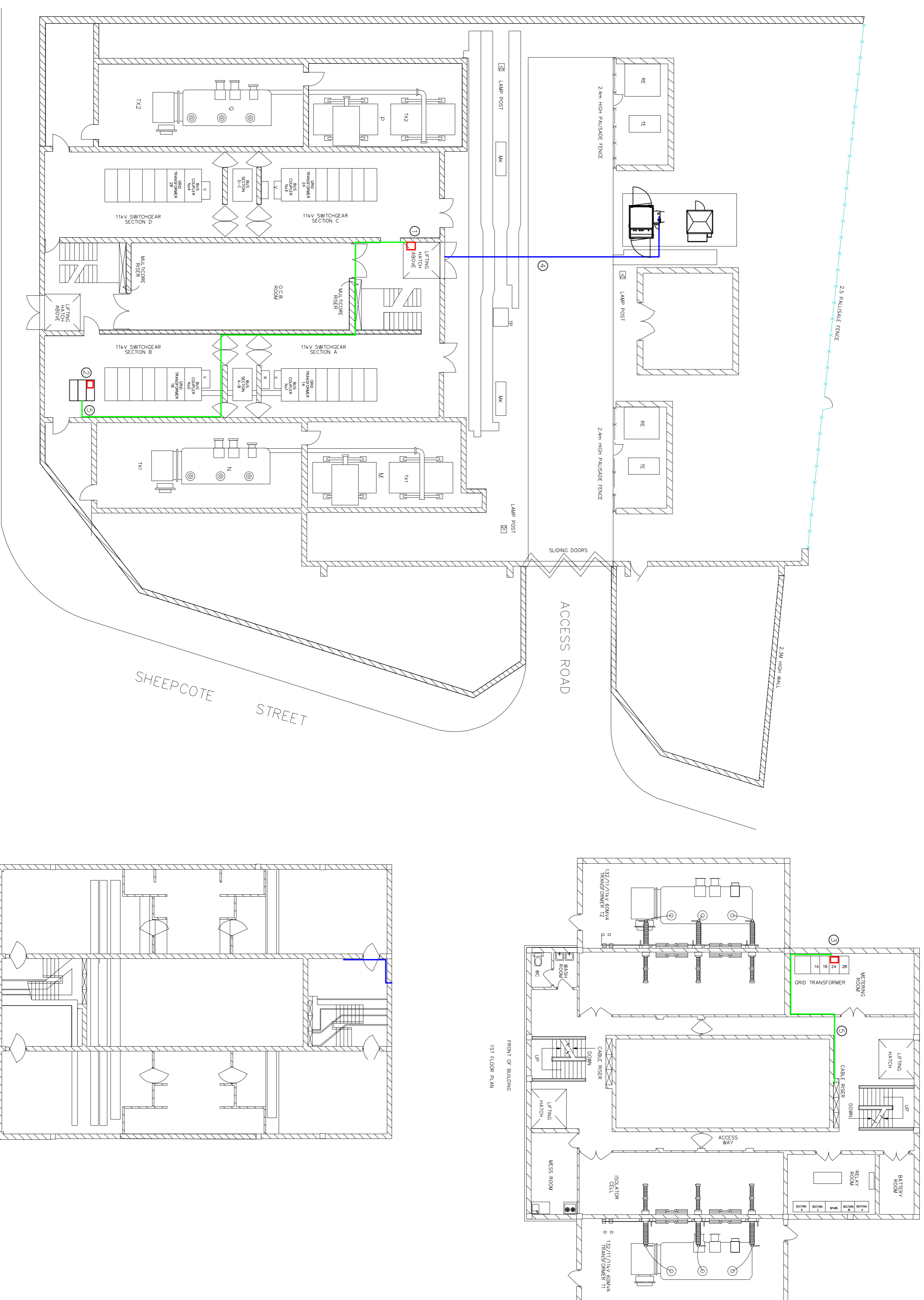
This drawing is the copyright of Western Power Distribution and may not be reproduced in any form without the written permission of Western Power Distribution

WESTERN POWER DISTRIBUTION <i>Serving the Midlands, South West and Wales</i>	
DRAWING No.	REV
BS26-272-002	1
SHEET	1 of 1

Appendix F – SITE DESIGN

Notes

- 1 Envoy - Mounted on wall between entrance door and door into 11kV switchroom.
- 2 PM7000 FLM - Placed inside CB3 AFLMS switchgear panel. See Drawing BS26-272-001 for wiring schematic and details
- 3 PM7000 Circulating Current - Placed on floor inside GTZA metering panel.
- 4 Fibre Optic Cable - X mm Ø hole to be drilled through floor below Envoy for fibre optic cable to access basement. From basement cable will follow route of 11kV power cable to IntelliRupter.
- 5 USB / Cat 5 data cable - Cable to follow existing cable ways through switchgear panels and then follow existing multicore routes to multicore riser. Cable to then run through new plastic conduit from multicore riser to Envoy



GROSVENOR STREET WEST

GROUND FLOOR PLAN
AND SITE LAYOUT

PLAN OF BASEMENT AREA

REV.	1	2	3	4	5
CHECKED	NM	CHECKED	CHECKED	CHECKED	CHECKED
APPROVED	SJ	APPROVED	APPROVED	APPROVED	APPROVED
DATE	10/10/13				

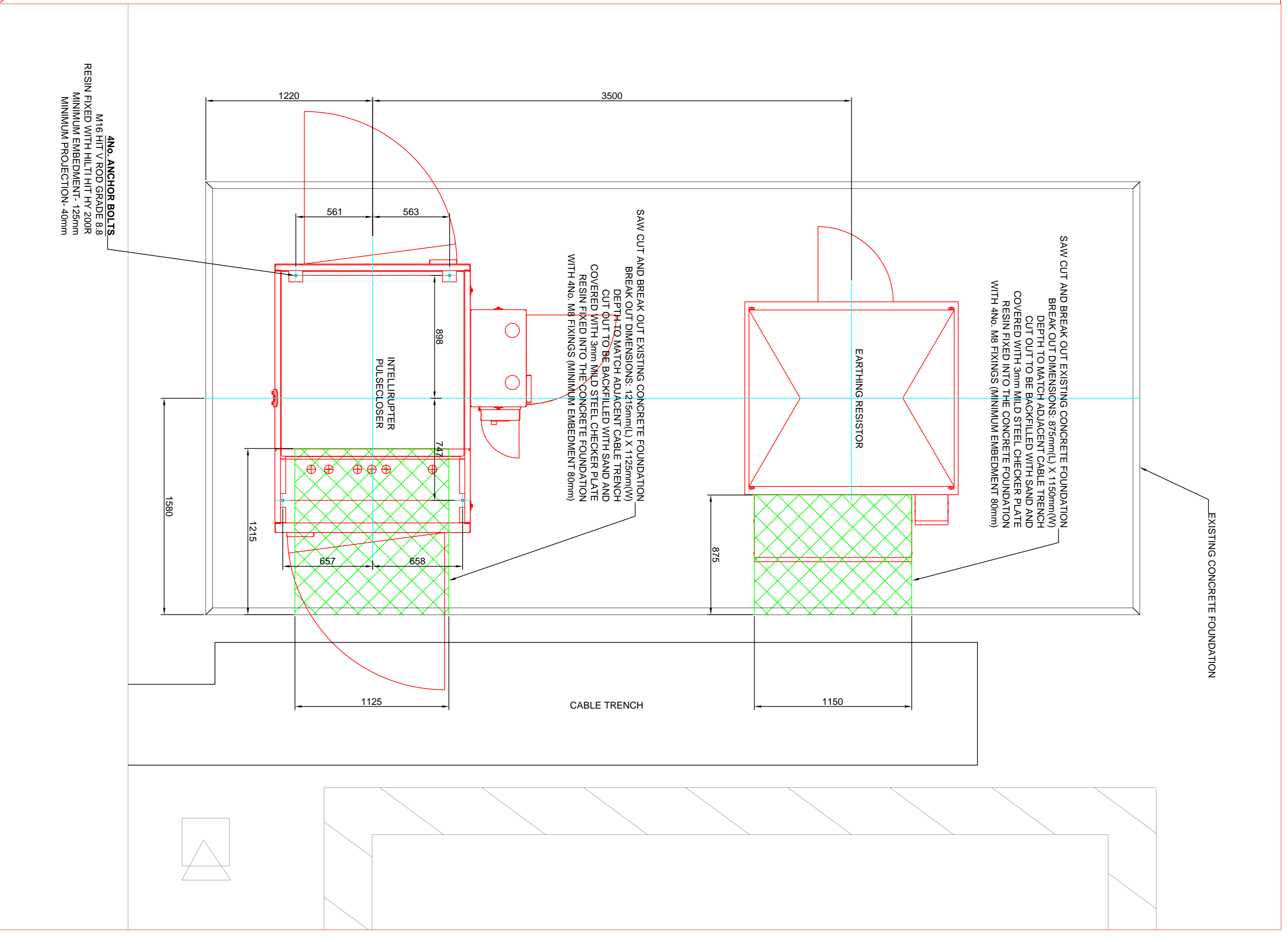
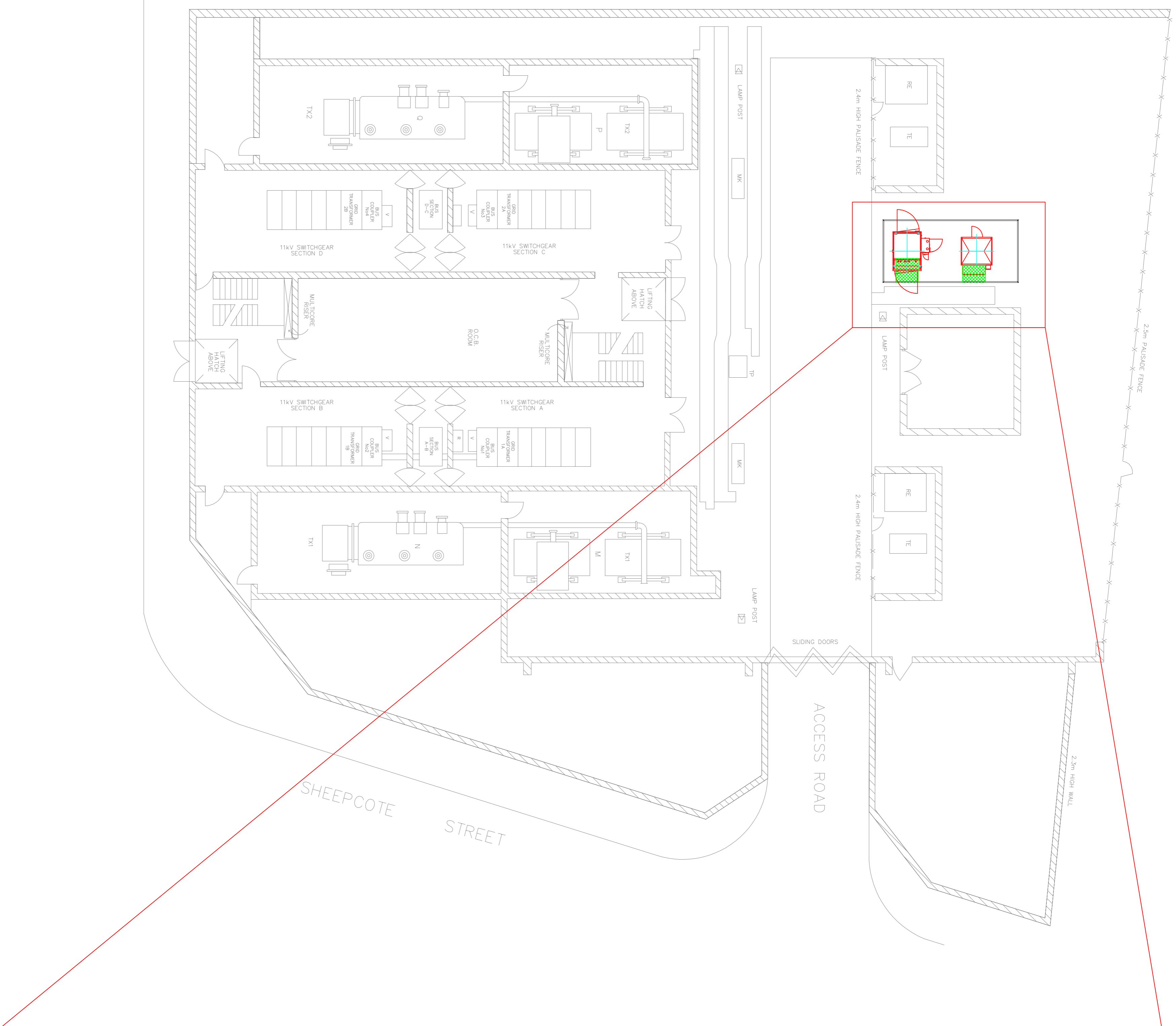
NOTES:
 — USB / Cat 5 cable hybrid
 — Fibre Optic cable

DRAWN	PAE	10/10/13
CHECKED	NM	10/10/13
APPROVED	SJ	24/10/13
SCALE	Not To Scale	

This drawing is the copyright of Western Power Distribution plc and may not be reproduced or used in any form without the written permission of Western Power Distribution plc.

LADYWOOD SUBSTATION
FLM LAYOUT AND INSTALLATION INSTRUCTIONS

 WESTERN POWER DISTRIBUTION <small>Setting the Standards. Setting the Pace.</small>	DRAWING No.	BS26/103/012	REV	1	SHEET	1 of 1



REV.	DATE	BY	CHECKED	DESCRIPTION
1	06/09/2013	PAS	AW	EQUIPMENT DIMENSIONS AND LAYOUT CONFIRMED. CONCRETE CUT OUT SIZES AMENDED TO SUIT EQUIPMENT.
2				
3				
4				
5				

REV.	DATE	BY	CHECKED	DESCRIPTION
1	06/09/2013	PAS	AW	EQUIPMENT DIMENSIONS AND LAYOUT CONFIRMED. CONCRETE CUT OUT SIZES AMENDED TO SUIT EQUIPMENT.
2				
3				
4				
5				

NOTES:

REV.	DATE	BY	CHECKED	DESCRIPTION
1	06/09/2013	PAS	AW	EQUIPMENT DIMENSIONS AND LAYOUT CONFIRMED. CONCRETE CUT OUT SIZES AMENDED TO SUIT EQUIPMENT.
2				
3				
4				
5				

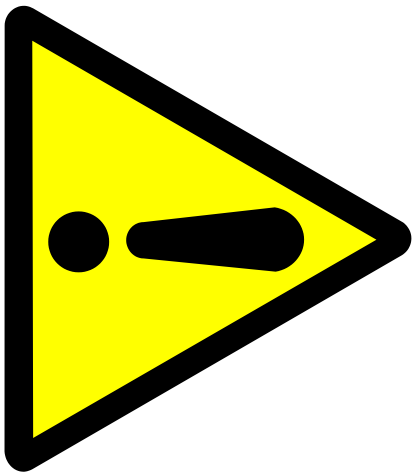
LADYWOOD SUBSTATION
FLEADGRND EQUIPMENT LAYOUT

WESTERN POWER DISTRIBUTION
Serving the Midlands, South West and Wales

DRAWING No. BS26/401/014

REV 1 SHEET 1 of 1

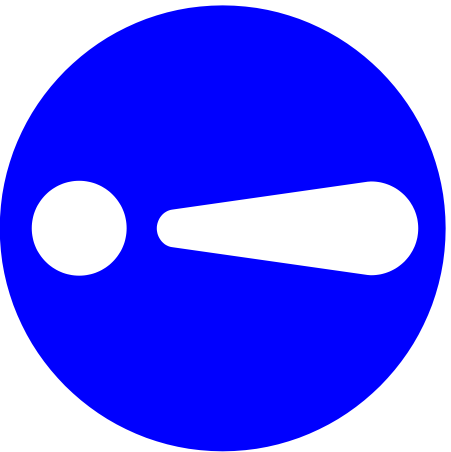
Appendix G – AFLM ACCESS SIGNAGE



**Active Fault Level
Monitor**



**Restricted Access
to this area**



**Access only when FLM 11kV
Circuit Breaker is open, isolated
and closed to earth**

FLM Compound Access Key

IMPORTANT

Access to the fenced area containing the Active Fault Level Monitor is restricted.

Prior to gaining access the FLM 11kV Circuit Breaker must be Open, Isolated and Closed to Earth.

