

# Domestic Renewable Heat Incentive Quarterly Report

# Update

[www.ofgem.gov.uk/domestic-renewable-heat-incentive](http://www.ofgem.gov.uk/domestic-renewable-heat-incentive)

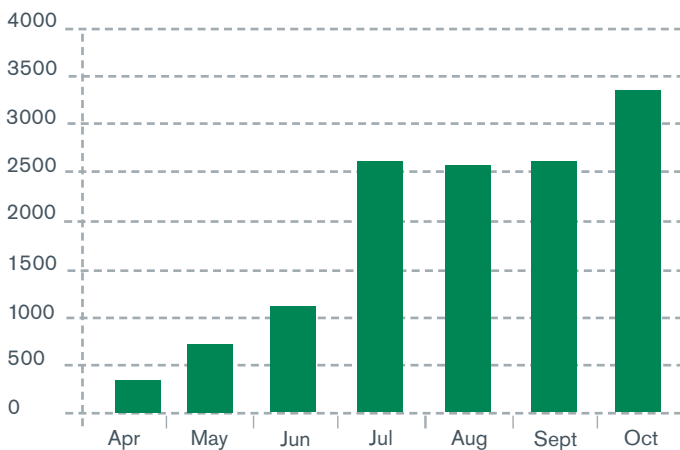
November 2014

Issue 2



The Domestic Renewable Heat Incentive (RHI) opened for applications on 9 April 2014 for homeowners across England, Scotland and Wales who install eligible renewable heating technologies in their homes. This second report details scheme activity from launch to 31 October 2014.

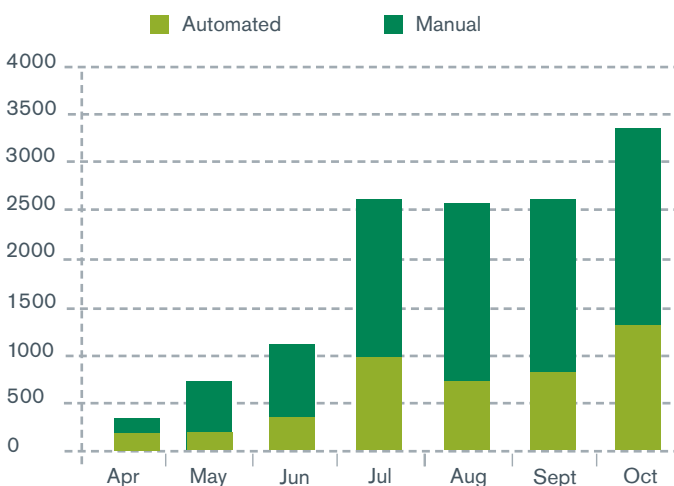
## No. of accreditations



October has seen the highest monthly total of accreditations made to date. This is largely due to the scheme opening to the second phase of Renewable Heat Premium Payment (RHPP) recipients on 9 October. All RHPP applicants have until 8 April 2015 to apply to the Domestic RHI.

Accreditations made			
376	1152	2544	3358
April	June	August	October
750	2573	2574	<b>13327</b>
May	July	September	Grand Total

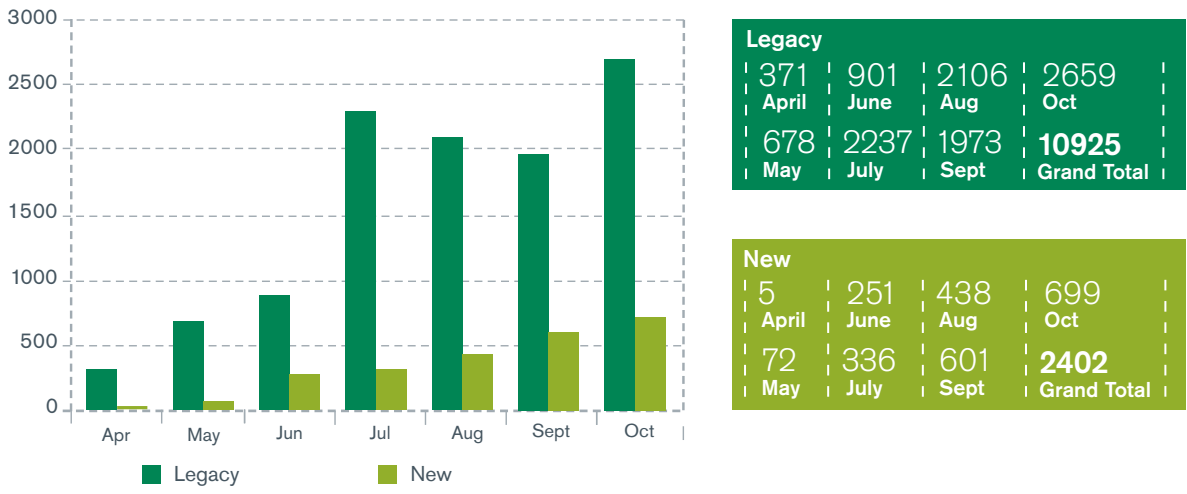
## Automated and manual accreditations



Automated				Manual			
195	347	734	1354	181	805	1810	2004
April	June	Aug	Oct	April	June	Aug	Oct
252	1006	756	<b>4644</b>	498	1567	1818	<b>8683</b>
May	July	Sept	Grand Total	May	July	Sept	Grand Total

Many applications for the Domestic RHI can be accredited automatically by our IT system, and are termed 'automated accreditations'. However, in some instances we need applicants to provide additional information which we review manually. Once accredited, these applications are termed 'manual accreditations'. In October alone, 40% of accreditations made were automated, and 60% were manual. As part of our administration, we aim to continuously improve our processes so that more accreditations can be automated.

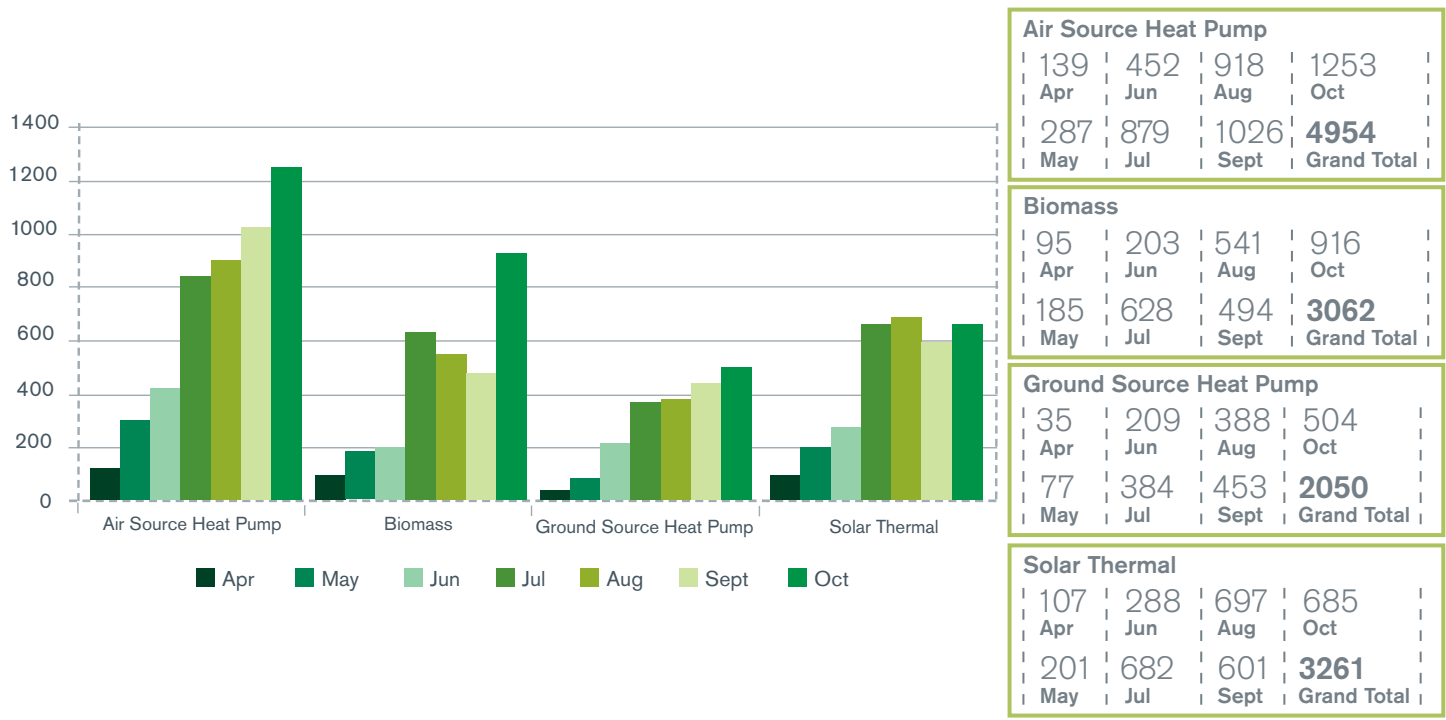
## Legacy and new accreditations



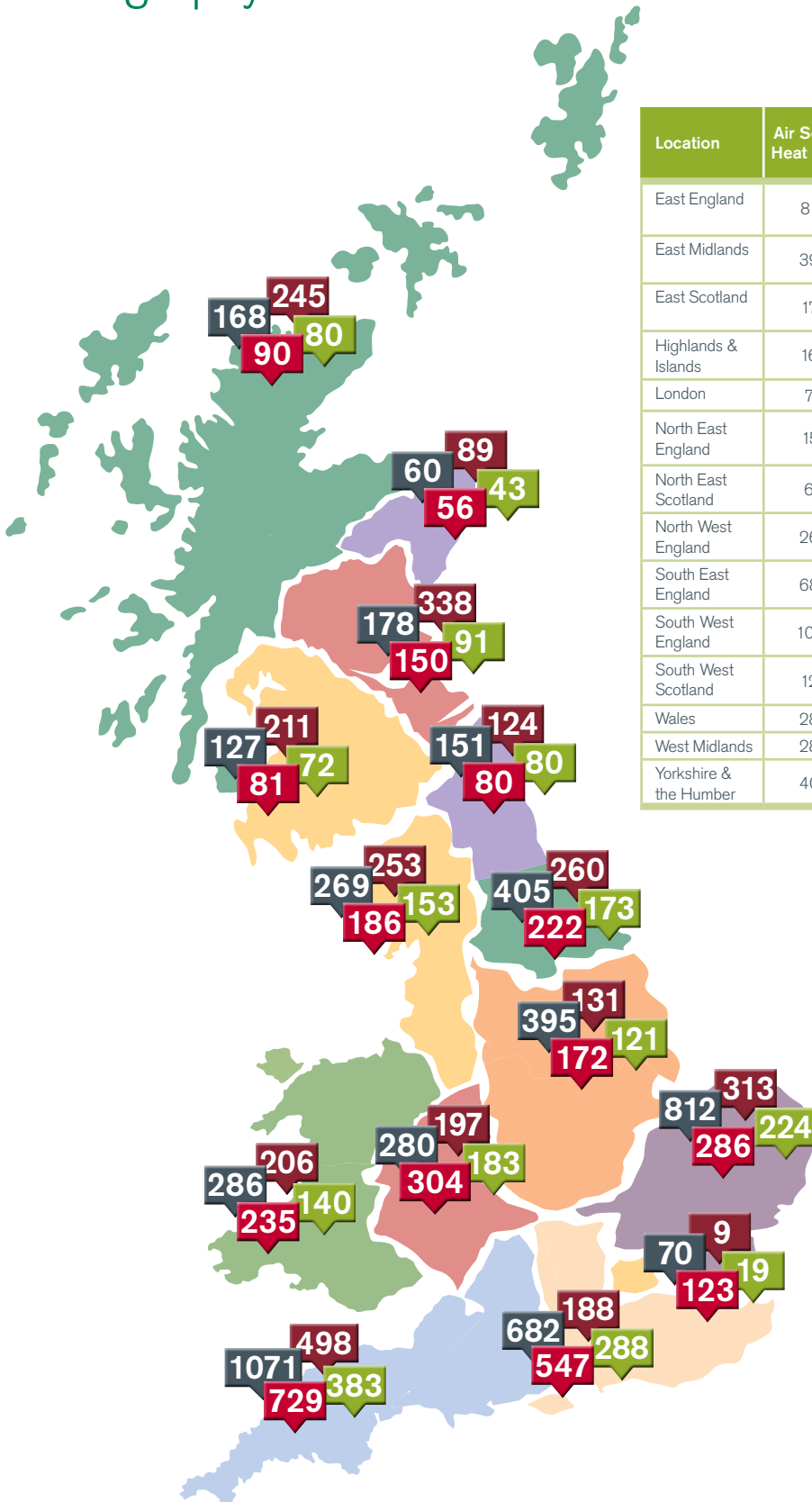
Legacy accreditations are for systems that were commissioned between 15 July 2009 when the RHI was first announced by DECC, and 9 April 2014 when the domestic scheme launched. New systems are those that were commissioned on or after 9 April 2014. The scheme was phased for those legacy applicants who received RHPP funding, with some being able to apply from 9 July 2014, and the remaining from 9 October 2014. This explains the peaks in legacy accreditations in July and October. Whilst we expect the volume of these legacy applications to decrease over time until 8 April 2015 when they will no longer be eligible, we can see the volume of new accreditations steadily increasing.

## Accreditations by technology

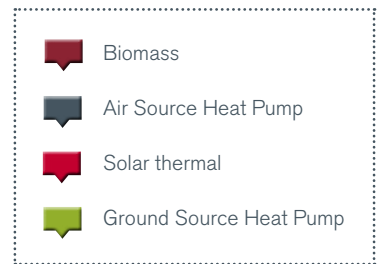
Air source heat pumps make up 37% of all accreditations followed by solar thermal (25%), biomass (23%) and ground source heat pumps (15%). We saw a significant increase in the number of biomass accreditations made in October, partly driven by seasonality and partly because of increased activity from suppliers and installers. Biomass systems are outperforming expectations in terms of renewable heat generated.



# Geography



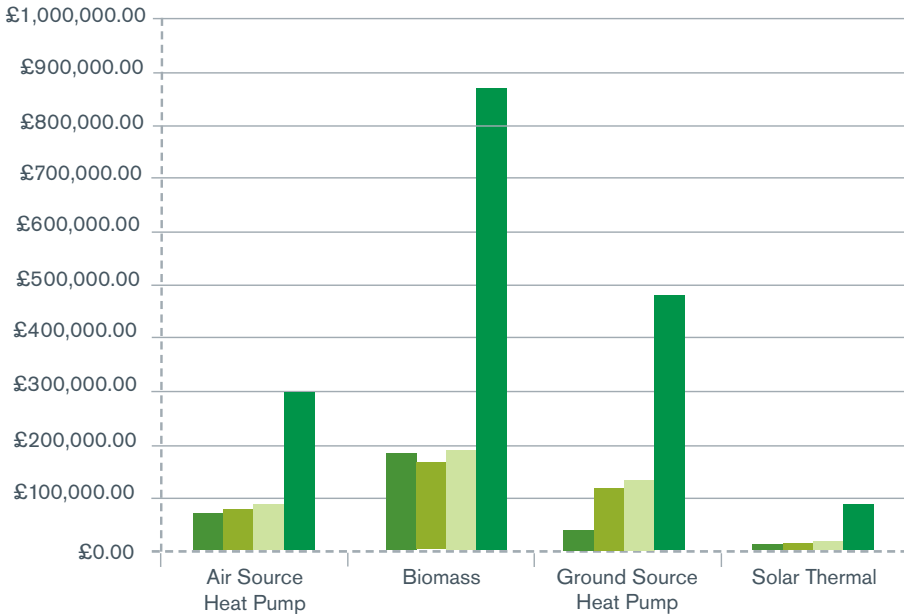
Location	Air Source Heat Pump	Biomass	Ground Source Heat Pump	Solar Thermal	Grand Total	% increase from last quarter
East England	812	313	224	286	1635	61%
East Midlands	395	131	121	172	819	58%
East Scotland	178	338	91	150	757	23%
Highlands & Islands	168	245	80	90	583	47%
London	70	9	19	123	221	60%
North East England	151	124	80	80	435	72%
North East Scotland	60	89	43	56	248	58%
North West England	269	253	153	186	861	80%
South East England	682	188	288	547	1705	60%
South West England	1071	498	383	729	2681	95%
South West Scotland	127	211	72	81	491	115%
Wales	286	206	140	235	867	132%
West Midlands	280	197	183	304	964	61%
Yorkshire & the Humber	405	260	173	222	1060	40%



South West England remains the region with the highest percentage of accreditations at 20%. The region with the largest percentage increase for accreditations from the first quarter (April 2014 to July 2014), to the second quarter (August 2014 to October 2014) is Wales with a 132% increase, shortly followed by South West Scotland with a 115% increase.

# Payments made

Payments are made for each accredited application on a quarterly basis, with the first payment sent three months after the date of application. October was the first month where some applicants received their second quarterly payments.



<b>July</b>	£67,665.32	£64,987.32
Air Source Heat Pump		Ground Source Heat Pump
£178,756.68	£14,468.73	Solar Thermal
Biomass		
£325,878.05		
<b>Grand Total</b>		

<b>August</b>	£79,810.72	£124,568.86
Air Source Heat Pump		Ground Source Heat Pump
£169,739.81	£17,695.08	Solar Thermal
Biomass		
£391,814.47		
<b>Grand Total</b>		

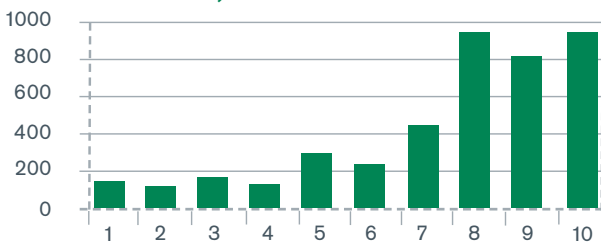
<b>September</b>	£86,299.74	£150,870.77
Air Source Heat Pump		Ground Source Heat Pump
£193,386.68	£22,416.86	Solar Thermal
Biomass		
£452,974.05		
<b>Grand Total</b>		

<b>October</b>	£302,817.14	£472,030.28
Air Source Heat Pump		Ground Source Heat Pump
£870,294.50	£79,196.47	Solar Thermal
Biomass		
£1,724,338.39		
<b>Grand Total</b>		

# Customer feedback

Obtaining feedback from our applicants is important to us and our customer survey is sent to all applicants where a decision had been made on their application. We use this feedback to improve our system and processes.

**How satisfied were you with the application process (10 being extremely satisfied, 1 being extremely dissatisfied)**



**If asked, how likely would you be to recommend the Domestic RHI to your friends and colleagues? (10 being extremely likely, 1 being extremely unlikely)**



## 🏠 Metering and Monitoring Service Packages

MMSPs (Metering and Monitoring Service Packages) are an optional part of the Domestic RHI scheme for participants with heat pumps or biomass pellet boilers. It's a useful way of understanding how a renewable energy system is performing and in doing so to receive an additional £200 - £300 a year once the MMSP is registered onto the scheme.

We have not yet had any approved applications for MMSPs, but understand several companies are nearing completion of eligible packages.

If you have any questions about the content of this report, please let us know by emailing [Survey.DomesticRHI@ofgem.gov.uk](mailto:Survey.DomesticRHI@ofgem.gov.uk)

