

Domestic Renewable Heat Incentive Quarterly Report

Update

www.ofgem.gov.uk

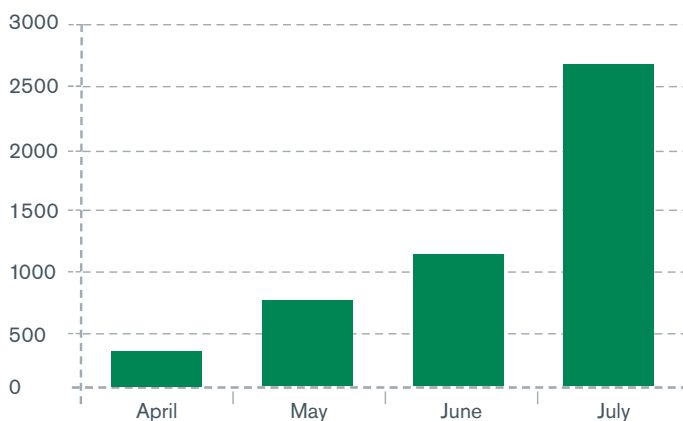
August 2014

Issue 1



The Domestic Renewable Heat Incentive (RHI) opened up for applications on 9 April 2014 for homeowners across England, Scotland and Wales who install eligible renewable heating technologies in their homes. This first quarterly report details scheme activity from launch (9 April 2014) to 31 July 2014 and we will continue to publish quarterly reports for each subsequent three month period.

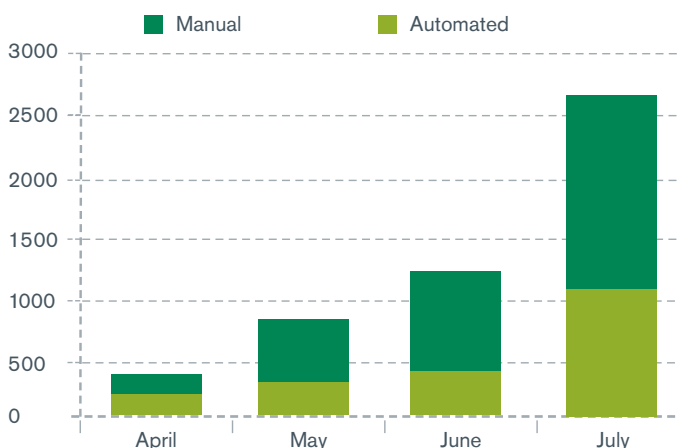
No. of accreditations



The number of installations accredited onto the scheme has increased each month, with almost 5000 installations accredited by the end of the first quarter. July was significantly busier than previous months, largely because the scheme opened to the first phase of RHPP applicants on 9 July.

Accreditations made		
383	1180	
April	June	
765	2633	4961
May	July	Grand Total

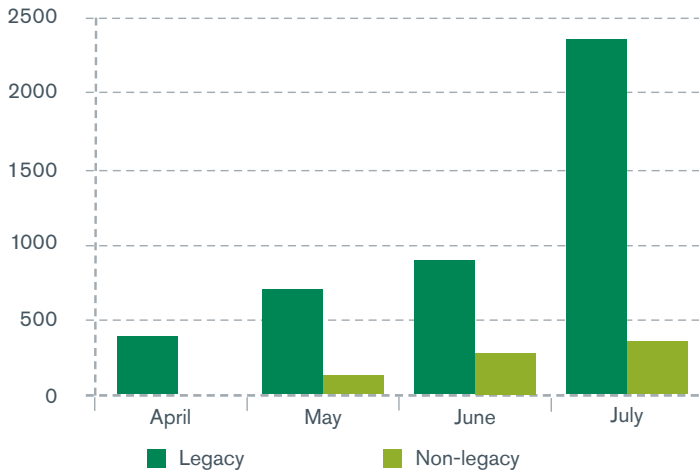
Automated vs manual accreditations



Many applications for the Domestic RHI can be accredited automatically by our IT system, and are termed 'automated accreditations'. However, in some instances we need applicants to provide additional information which we review manually. Once accredited, these applicants are termed 'manual accreditations'. In the first quarter, 38% of accreditations are automated and 62% are manual.

Automated			Manual		
197	366		186	814	
April	June		April	June	
255	1051	1869	510	1582	3092
May	July	Grand Total	May	July	Grand Total

Legacy vs non-legacy accreditations

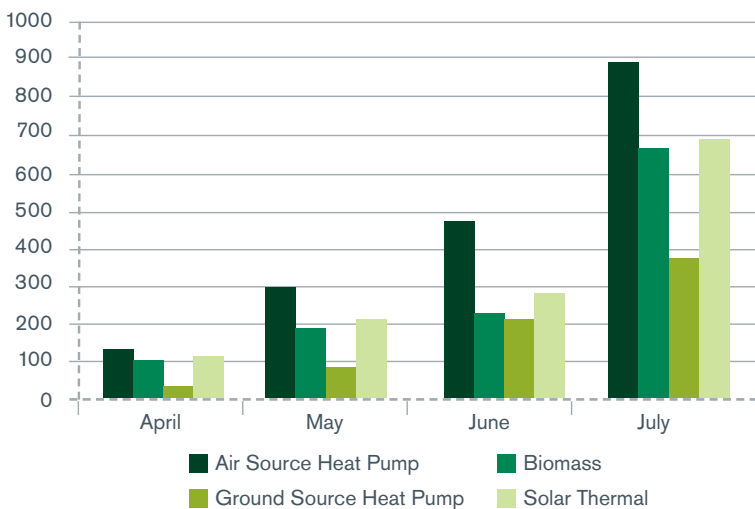


Legacy			Non-Legacy		
378	912	4240	5	268	721
April	June		April	June	
691	2259	4240	74	374	721
May	July		May	July	
Grand Total			Grand Total		

Legacy installations are those that were commissioned between 15 July 2009 when the RHI was first announced, and 9 April 2014 when the domestic scheme launched. Non-legacy installations are those that were commissioned post 9 April 2014. The number of non-legacy accreditations has increased each month, and we anticipate this number continuing to rise over the coming months. The scheme opened to phase 1 RHPP applicants on 9 July 2014, all of which are legacy installations, which explains the high number of legacy accreditations in July.

Accreditations by technology

Air source heat pump installations have had the highest number of accreditations each month, and overall these constitute 36% of accreditations. This is followed by solar thermal at 26%, biomass at 24% and ground source heat pumps at 14%.



Air Source Heat Pump		
143	453	1775
April	June	
296	883	1775
May	July	
Grand Total		

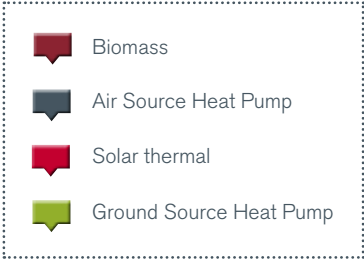
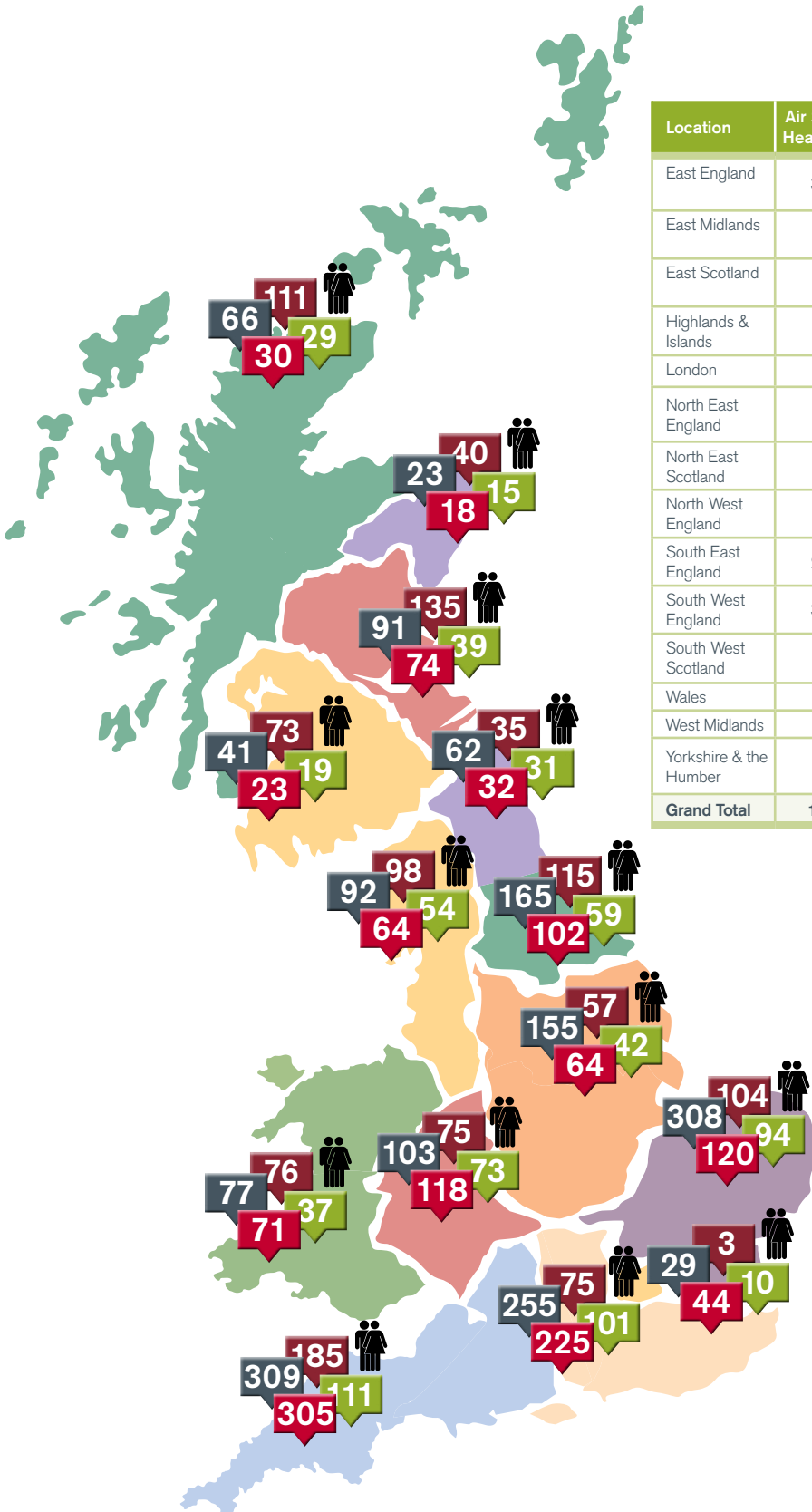
Ground Source Heat Pump		
36	212	714
April	June	
77	389	714
May	July	
Grand Total		

Biomass		
97	225	1182
April	June	
187	673	1182
May	July	
Grand Total		

Solar Thermal		
107	290	1290
April	June	
205	688	1290
May	July	
Grand Total		

Geography

Location	Air Source Heat Pump	Biomass	Ground Source Heat Pump	Solar Thermal	Grand Total
East England	308	104	94	120	626
East Midlands	155	57	42	64	318
East Scotland	91	135	39	74	339
Highlands & Islands	66	111	29	30	236
London	29	3	10	44	85
North East England	62	35	31	32	160
North East Scotland	23	40	15	18	96
North West England	92	98	54	64	308
South East England	255	75	101	225	656
South West England	309	185	111	305	910
South West Scotland	41	73	19	23	156
Wales	77	76	37	71	261
West Midlands	103	75	73	118	369
Yorkshire & the Humber	165	115	59	102	441
Grand Total	1775	1182	714	1290	4961



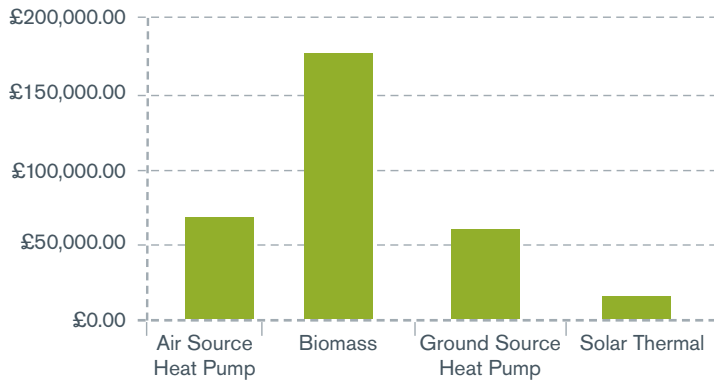
🏠 Metering and Monitoring Service Packages

MMSPs (Metering and Monitoring Service Packages) are an optional part of the Domestic RHI scheme for participants with heat pumps or biomass pellet boilers. It's a useful way of understanding how a renewable energy system is performing and in doing so to receive an additional £200 - £230 a year once the MMSP is registered onto the scheme.

Currently, we are not aware of any eligible MMSPs, but know of a number of companies working towards completion of a package later this year.

Payments made

Payments are made for each accredited application on a quarterly basis, with the first set of payments sent three months after the date of application. With the scheme opening on 9 April 2014, the first payments were made on 9 July 2014. The tariffs for each technology type are listed below.



Tariff

(per kilowatt hour renewable heat)

12.2p

Biomass boilers and biomass stoves

7.3p

Air source heat pumps

18.8p

Ground source heat pumps

19.2p

Solar Thermal

July

£67,206.42

Air Source Heat Pump

£64,987.32

Ground Source Heat Pump

£176,504.53

Biomass

£14,429.73

Solar Thermal

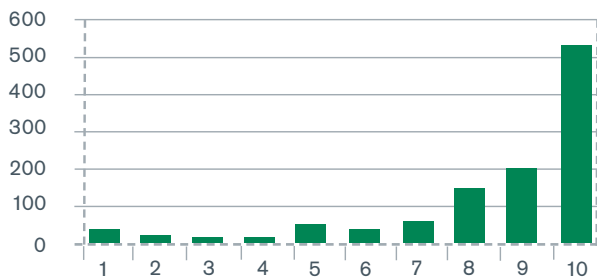
£323,128.00

Grand Total

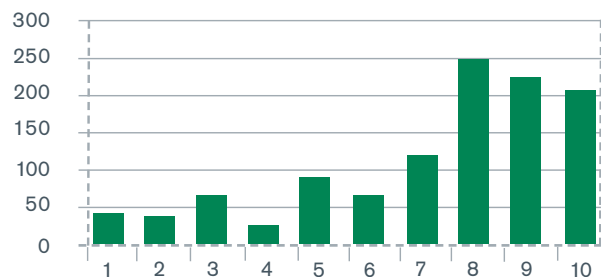
Feedback so far

Obtaining feedback from our applicants is important to us, and our customer survey is sent to all applicants where a decision has been made on their application.

If asked, how likely would you be to recommend the Domestic RHI to your friends and colleagues? (10 being extremely likely, 1 being extremely unlikely)



How satisfied were customers with the application process (10 being extremely satisfied, 1 being extremely dissatisfied)



If you have any questions about the content of this report, please let us know by emailing Survey.DomesticRHI@ofgem.gov.uk

