

# Non-Domestic Renewable Heat Incentive (RHI)

www.ofgem.gov.uk

Non-Domestic



## Understanding your metering requirements:

### A guide to what you should meter (or measure) and how to answer the metering questions correctly

#### How do I know what I should meter (or measure)?

#### Do I need to submit a heat loss assessment?

This guide can help you determine your metering requirements either before you start your application or as you are working your way through the process. Follow the diagram instructions to find out what you should be metering on your RHI installation then keep reading to find out how to use this information to answer the metering questions in the register.

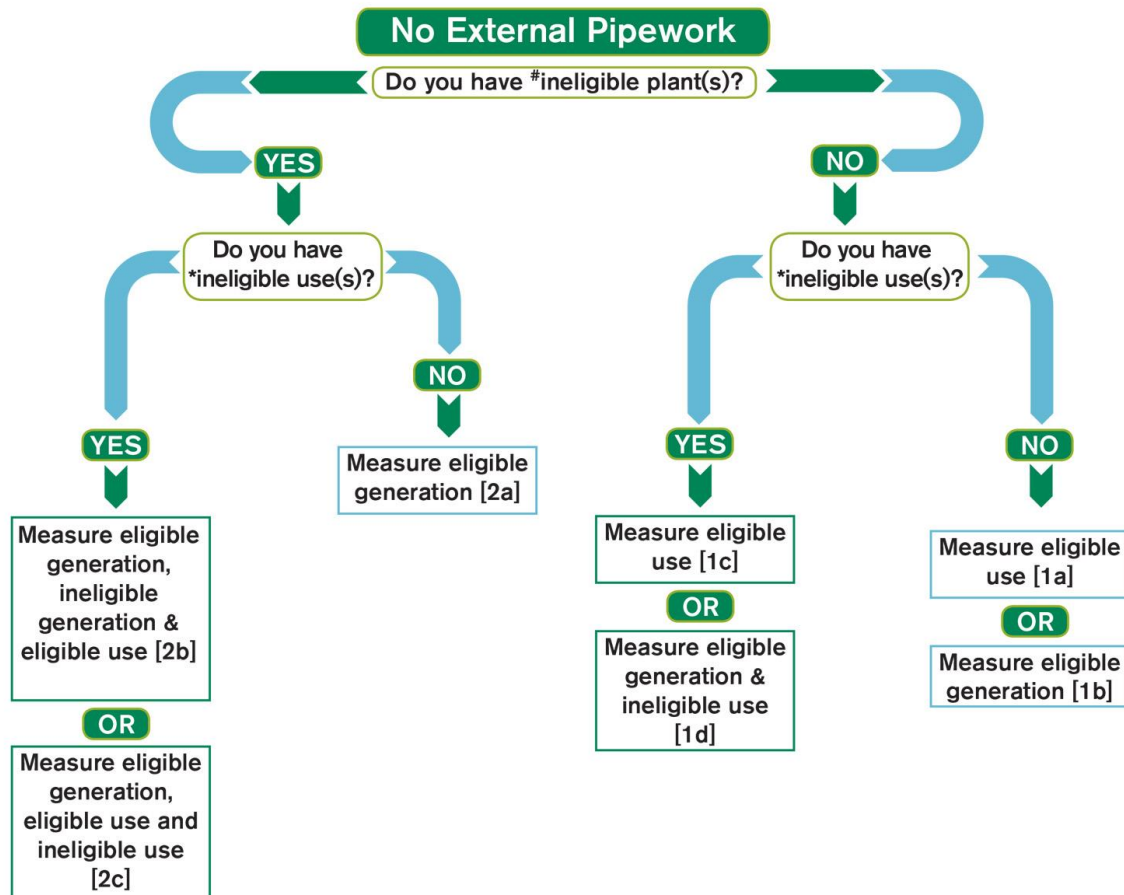
#### To get started:

- If you don't have any external pipework go to page 2
- If you do have external pipework go to page 3

The [accompanying guidance document](#) provides further information on what type of installation you have and how to complete the metering questions in the application form.

## I don't have any external pipework

Starting from the top, answer the questions and follow the path to see what you should meter and to find your reference code in the square brackets [] below. Simply look up this reference code number in the [accompanying guidance document](#) to see how you should answer the metering questions in your application.



### # Ineligible Plants:

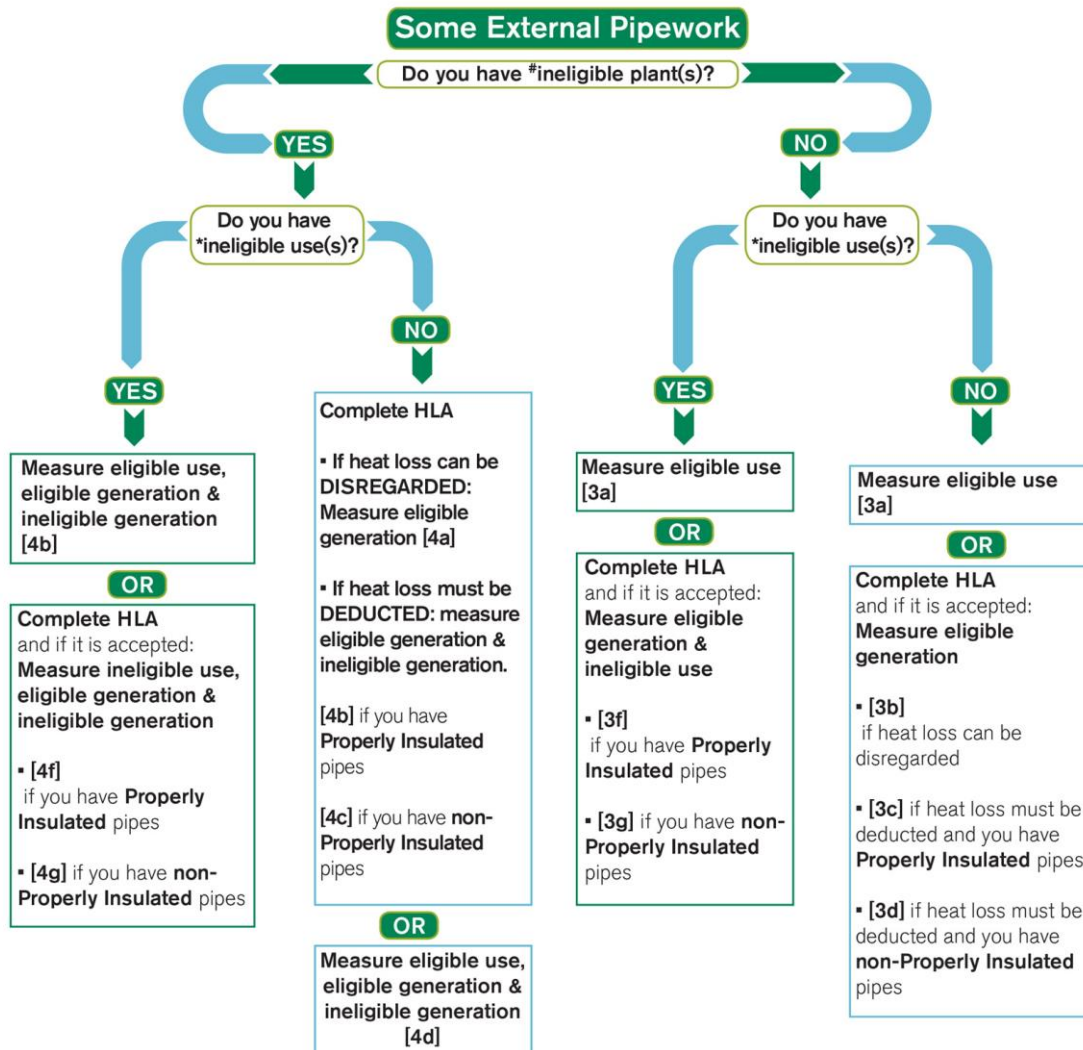
Ineligible plants are any other plants providing heat to the same heating system as your RHI installation. If all ineligible plants are 'decentralised' or 'isolated' from the RHI heating system, then you can answer 'No' to this question. To find out further details please see 7.79 – 7.82 in the Volume One Guidance.

### \*Ineligible uses:

Heating that occurs outside a building except drying/cleaning for commercial purposes is considered ineligible. For the purpose of this diagram, heat losses from external pipework are excluded. For more information please see Chapter Six (6) of the Volume One Guidance.

## I do have some external pipework

Starting from the top, answer the questions and follow the path to see what you should meter and to find your reference code in the square brackets [] below. Simply look up this reference number in the [accompanying guidance document](#) to see how you should answer the metering questions in your application.



### # Ineligible Plants:

Ineligible plants are any other plants providing heat to the same heating system as your RHI installation. If all ineligible plants are 'decentralised' or 'isolated' from the RHI heating system, then you can answer 'No' to this question. To find out further details please see 7.79 – 7.82 in the Volume One Guidance.

### \*Ineligible uses:

Heating that occurs outside a building except drying/cleaning for commercial purposes is considered ineligible. For the purpose of this diagram, heat losses from external pipework are excluded. For more information please see Chapter Six (6) of the Volume One Guidance.

### Properly Insulated/not-Properly Insulated:

- Only over ground pipes which meet **standard BS5422** are considered properly insulated.
- Underground pipes are not currently considered properly insulated for the purpose of the RHI.
- Use the Heat Loss Assessment (HLA) to help you to assess whether your over ground pipework is properly insulated.

## How to answer the metering questions correctly

### Using [] the reference code in the square brackets

Once you work through the metering diagram you will see a number and letter in square brackets eg, [3a]. Use this number to look up in the [accompanying guidance document](#) for information on the next steps once you have installed your meters.

The guide to answering the metering questions document will give you the following information to help you answer the application questions about metering – simply look up your relevant code:

### EXAMPLE ONLY

If you used the metering diagram and it gave you [3a], look up 3a in the attached guidance document to obtain the following information

| Code | Metering category | Question   | Answer             | Metering placement examples |
|------|-------------------|--|--------------------|-----------------------------|
| 3a   | Standard          | <b>HH110</b> –<br>Location of heat generation and use<br>Is the heat generating plant for which<br>... | <b>HH110 = Yes</b> | A4, B3                      |