



**Alba Building Sciences Ltd**

Norham, Perth Road, Blairgowrie, PH10 6EJ

[www.albasciences.com](http://www.albasciences.com)

**CERT Demonstration Action UK Park Homes**

**SCHEME REF: SSEN09132**

# **Alba Report 21050**

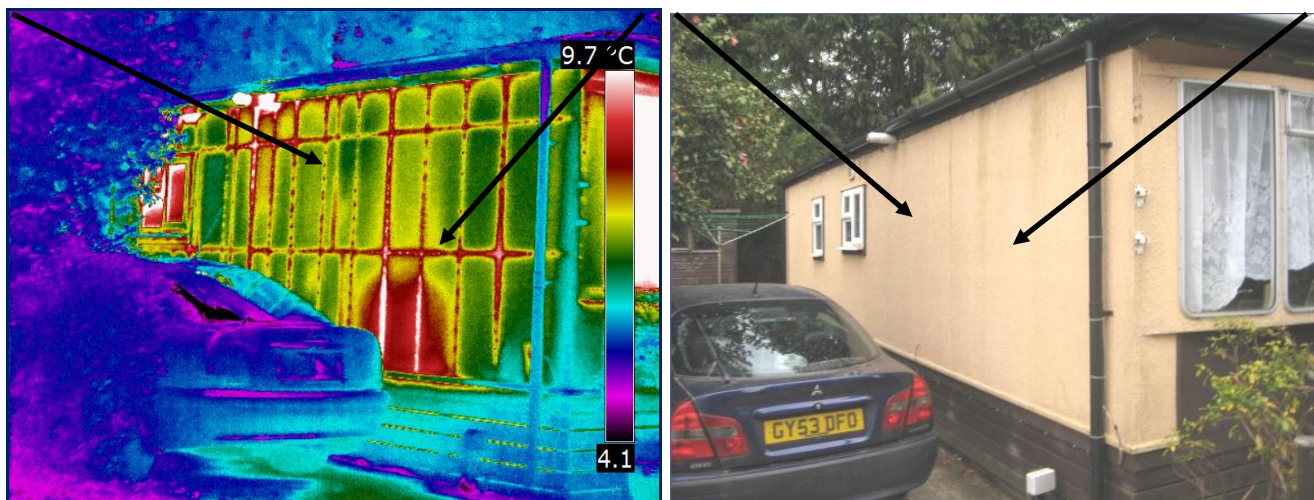
## **Appendix 4C**

### **Blue Flag**

# **Pre v Post-Improvement Thermographic Image Data**



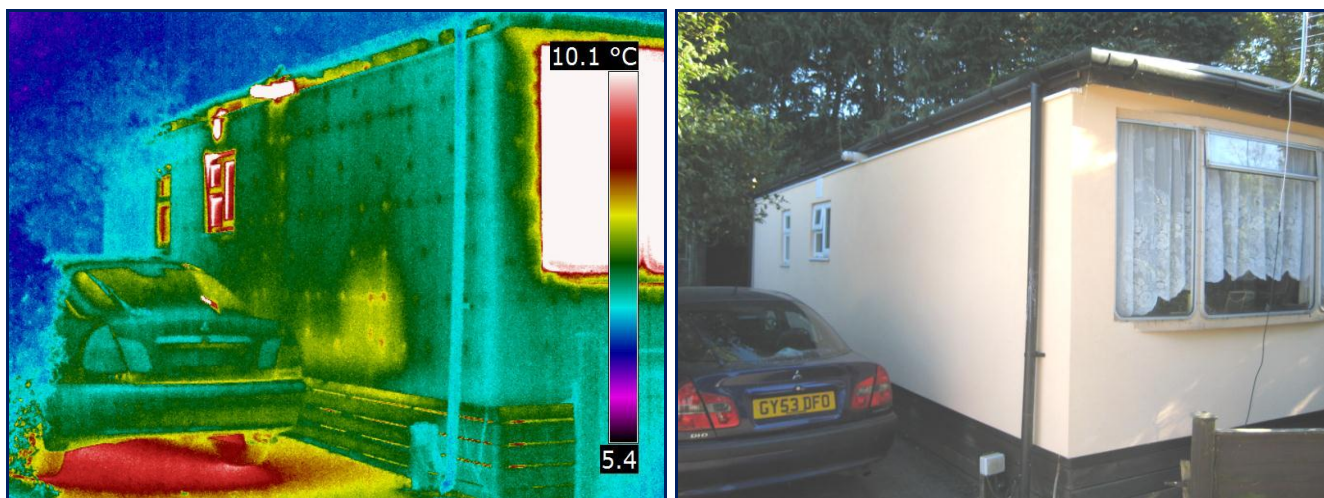
## Pre-Improvement Inspection



In the thermal image “pre-improvement”, it is clear that significant heat loss is occurring across the building envelope and that this can be attributed to thermal bridging across the timber frame construction in addition to warm air leakage at critical junction details.

The thermographic inspection also identified a number of anomalies that were indicative of heat loss occurring across the floor construction.

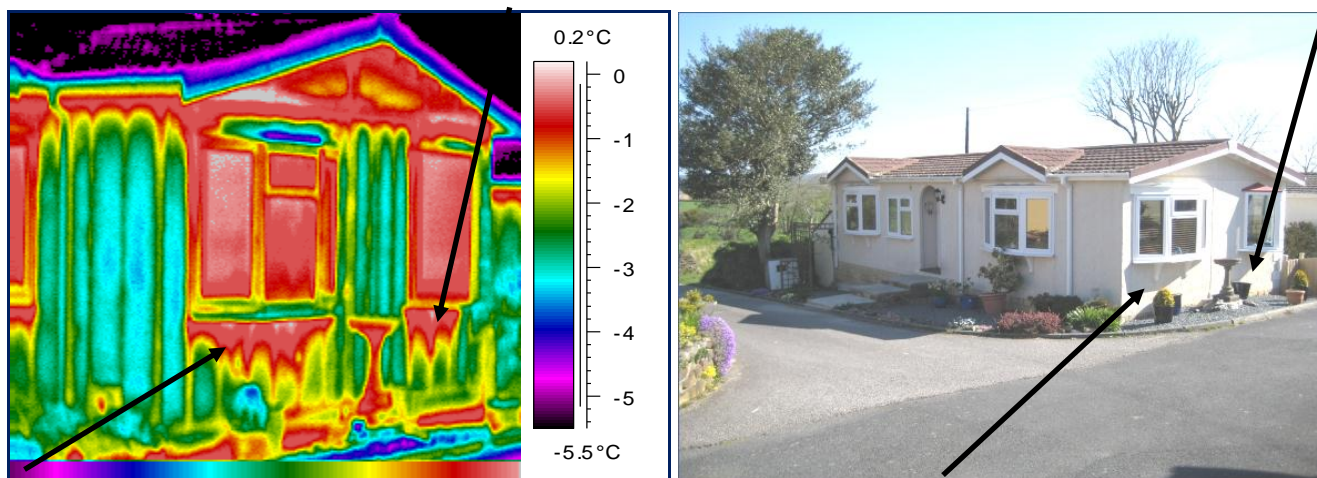
## Post-Improvement Inspection



It can be seen in the above thermal image “post-improvement” that the number of heat-loss pathways across the building envelope have been significantly reduced ( i.e. when compared to the “pre-improvement” image ).



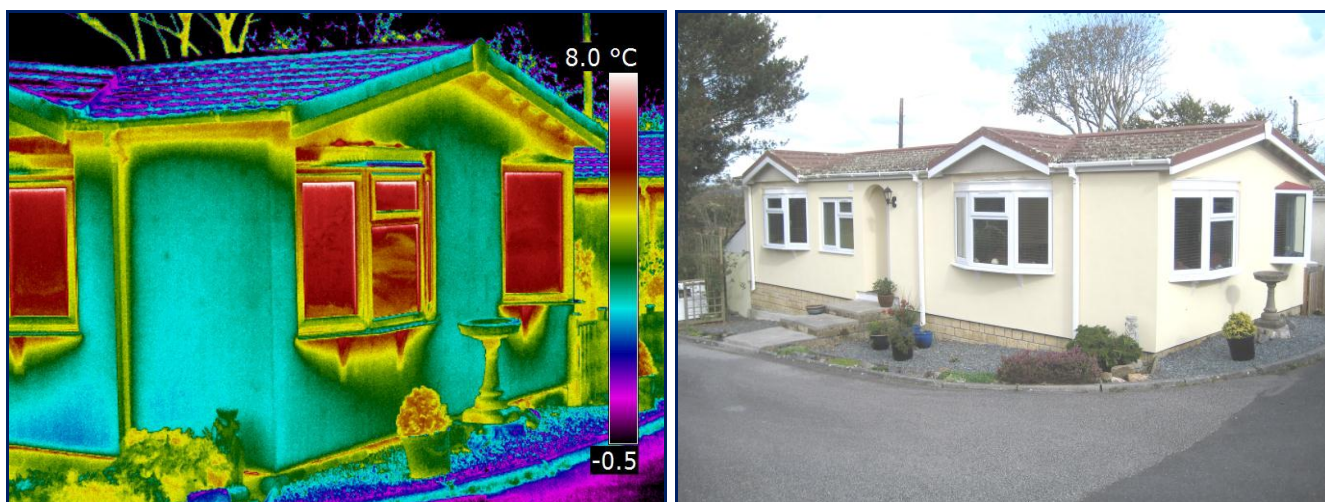
### Pre-Improvement Inspection



In the thermal image “pre-improvement”, it is clear that significant heat loss is occurring across the building envelope and that this can be attributed to thermal bridging across the timber frame construction in addition to warm air leakage at critical junction details.

The thermographic inspection also identified a number of anomalies that were indicative of heat loss occurring across the floor construction.

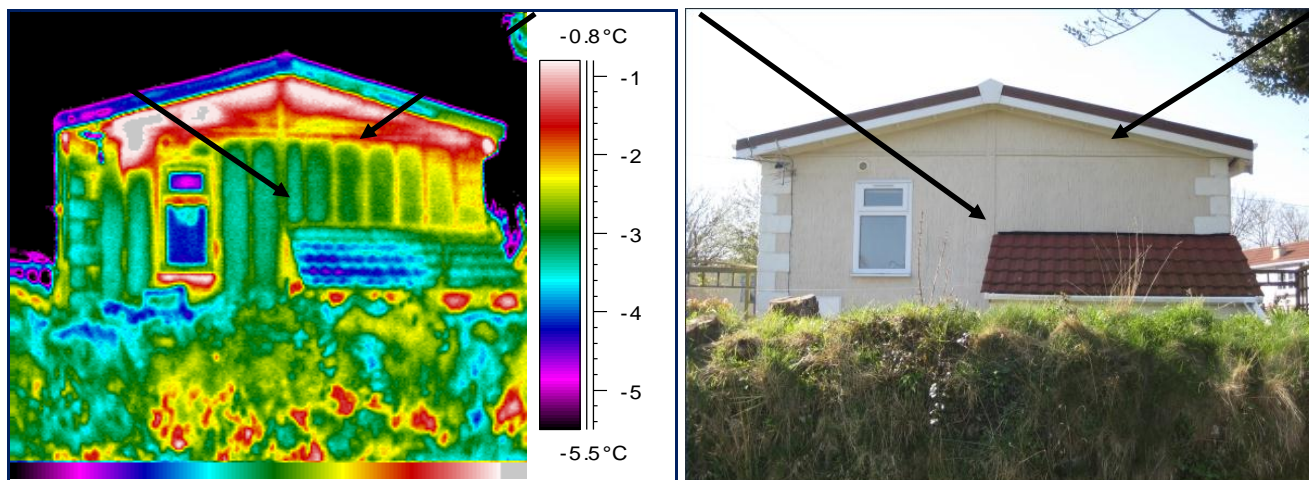
### Post-Improvement Inspection



It can be seen in the above thermal image “post-improvement” that the number of heat-loss pathways across the building envelope have been significantly reduced ( i.e. when compared to the “pre-improvement” image ).



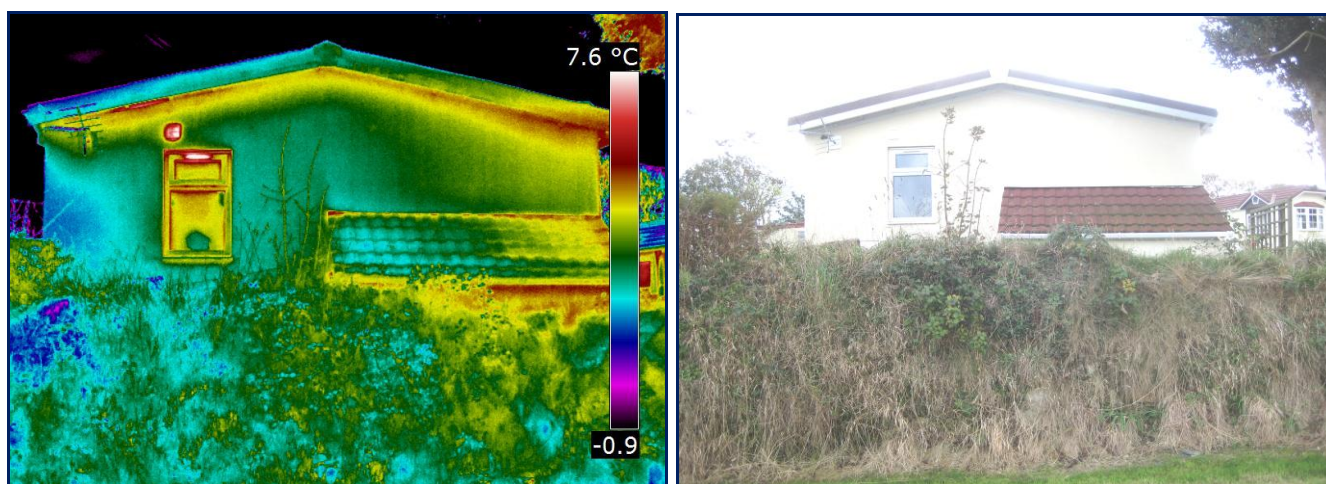
## Pre-Improvement Inspection



In the thermal image “pre-improvement”, it is clear that significant heat loss is occurring across the building envelope and that this can be attributed to thermal bridging across the timber frame construction in addition to warm air leakage at critical junction details.

The thermographic inspection also identified a number of anomalies that were indicative of heat loss occurring across the floor construction.

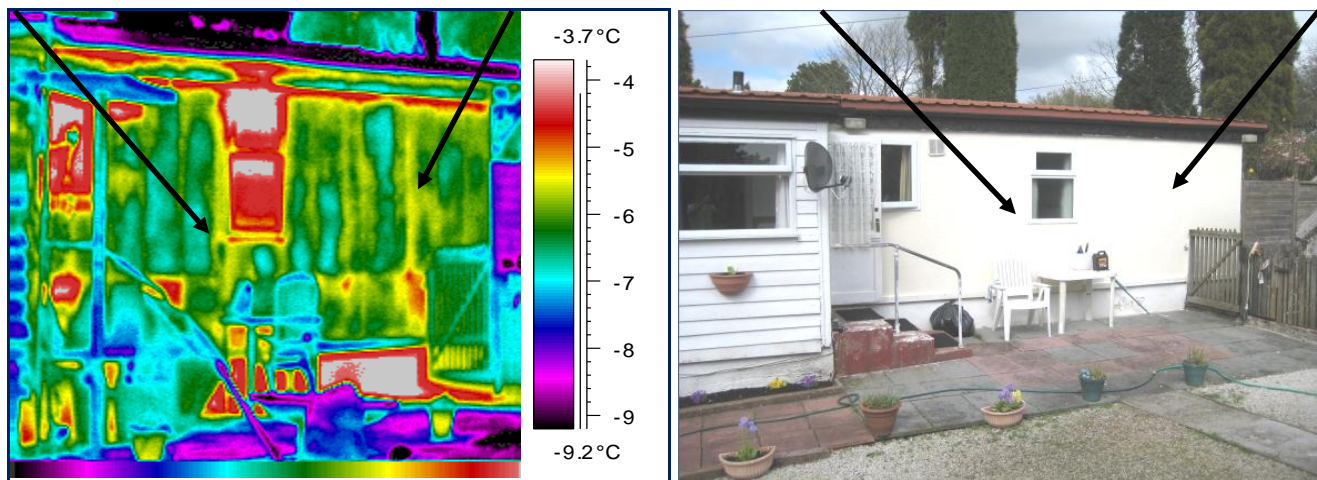
## Post-Improvement Inspection



It can be seen in the above thermal image “post-improvement” that the number of heat-loss pathways across the building envelope have been significantly reduced ( i.e. when compared to the “pre-improvement” image ).



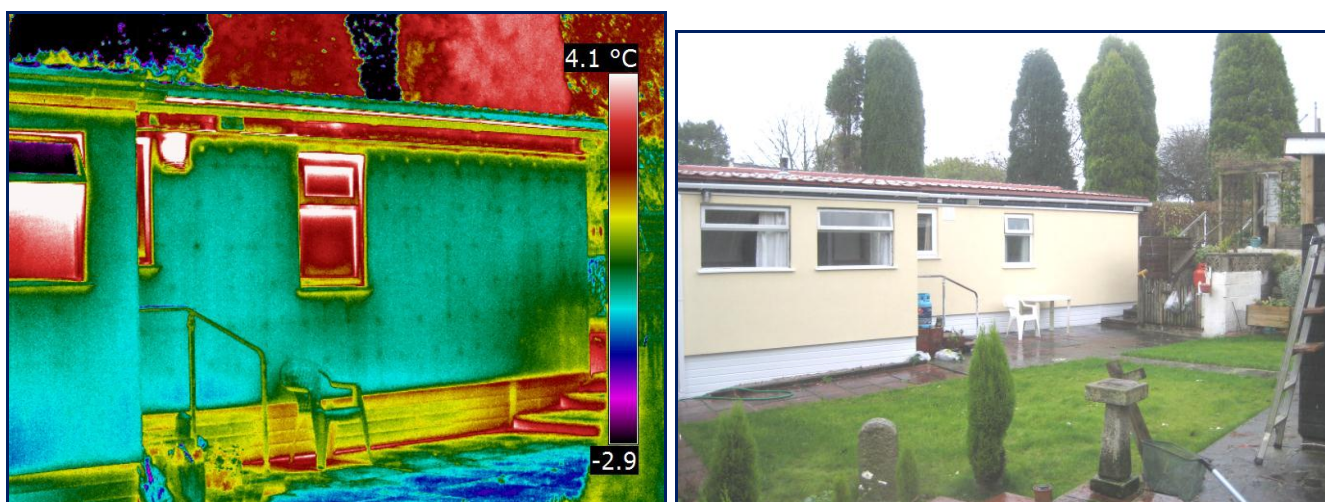
### Pre-Improvement Inspection



In the thermal image “pre-improvement”, it is clear that significant heat loss is occurring across the building envelope and that this can be attributed to thermal bridging across the timber frame construction in addition to warm air leakage at critical junction details.

The thermographic inspection also identified a number of anomalies that were indicative of heat loss occurring across the floor construction.

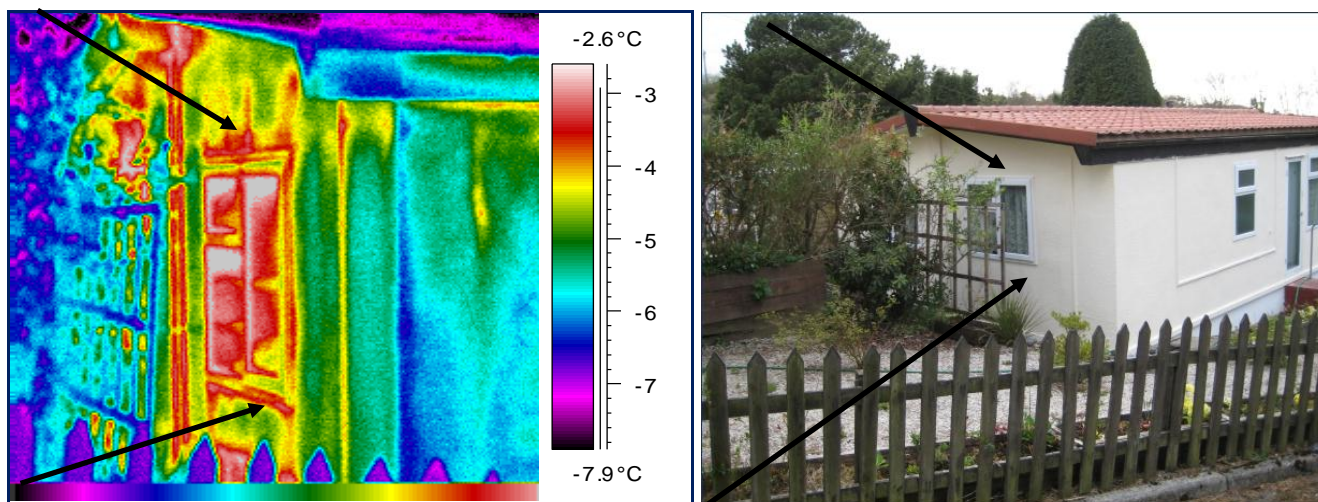
### Post-Improvement Inspection



It can be seen in the above thermal image “post-improvement” that the number of heat-loss pathways across the building envelope have been significantly reduced ( i.e. when compared to the “pre-improvement” image ).



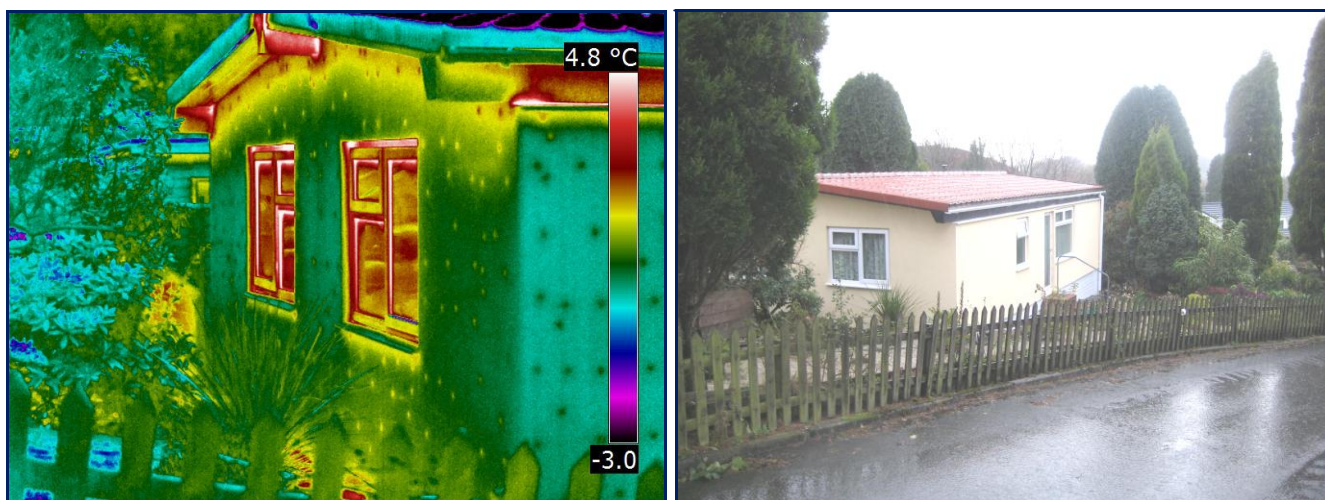
### Pre-Improvement Inspection



In the thermal image “pre-improvement”, it is clear that significant heat loss is occurring across the building envelope and that this can be attributed to thermal bridging across the timber frame construction in addition to warm air leakage at critical junction details.

The thermographic inspection also identified a number of anomalies that were indicative of heat loss occurring across the floor construction.

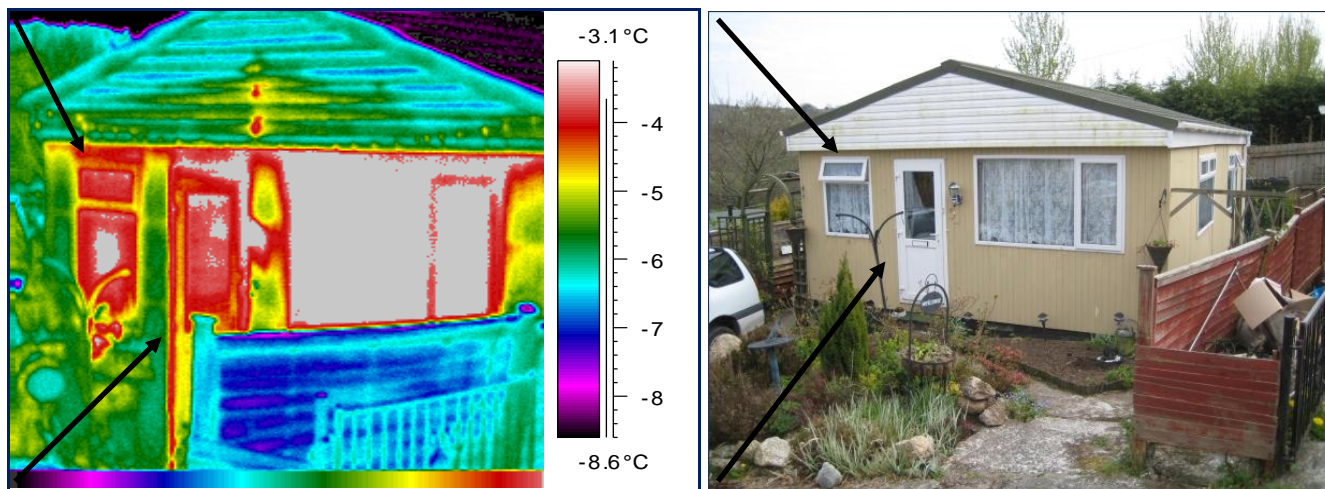
### Post-Improvement Inspection



It can be seen in the above thermal image “post-improvement” that the number of heat-loss pathways across the building envelope have been significantly reduced ( i.e. when compared to the “pre-improvement” image ).



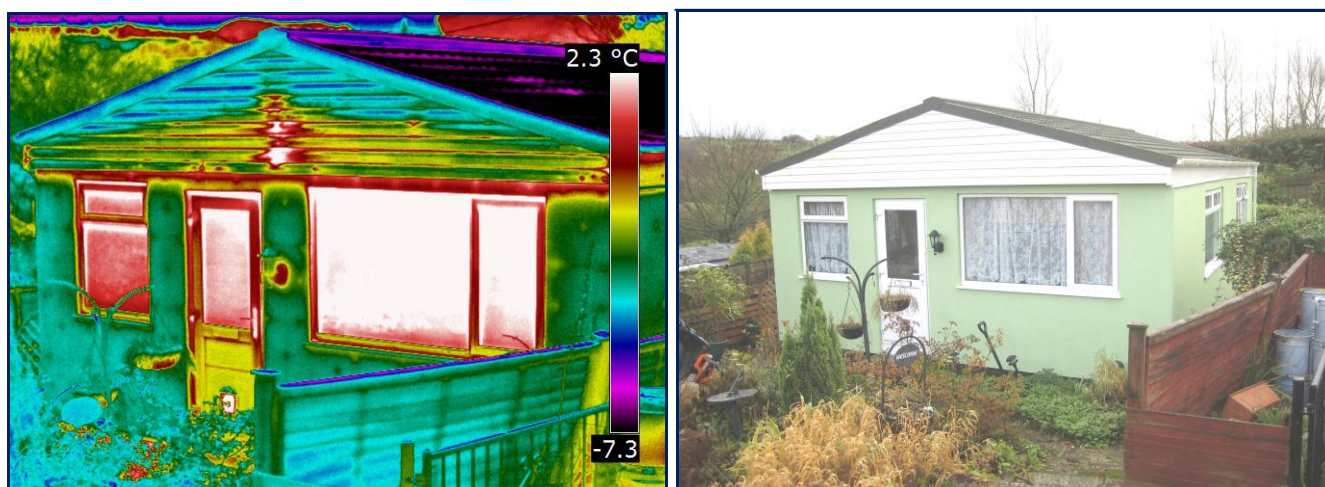
### Pre-Improvement Inspection



In the thermal image “pre-improvement”, it is clear that significant heat loss is occurring across the building envelope and that this can be attributed to thermal bridging across the timber frame construction in addition to warm air leakage at critical junction details.

The thermographic inspection also identified a number of anomalies that were indicative of heat loss occurring across the floor construction.

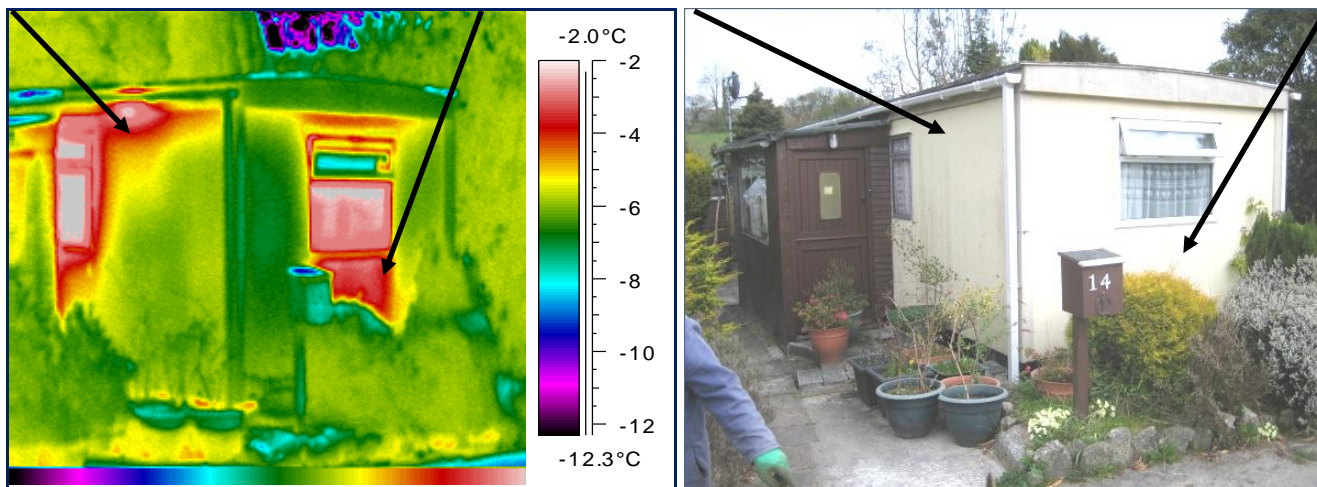
### Post-Improvement Inspection



It can be seen in the above thermal image “post-improvement” that the number of heat-loss pathways across the building envelope have been significantly reduced ( i.e. when compared to the “pre-improvement” image ).



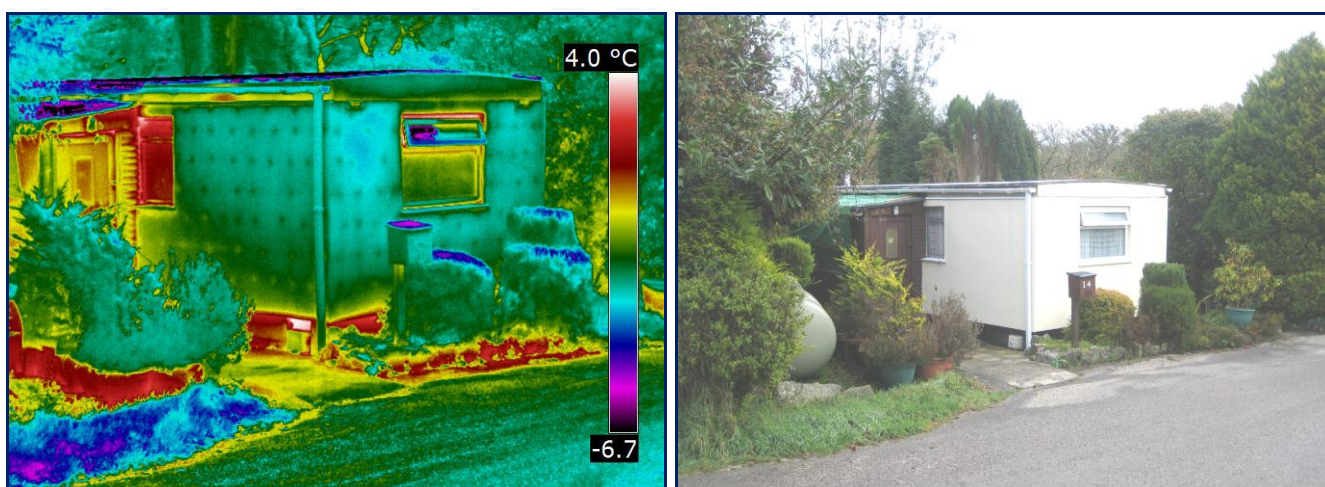
### Pre-Improvement Inspection



In the thermal image “pre-improvement”, it is clear that significant heat loss is occurring across the building envelope and that this can be attributed to thermal bridging across the timber frame construction in addition to warm air leakage at critical junction details.

The thermographic inspection also identified a number of anomalies that were indicative of heat loss occurring across the floor construction.

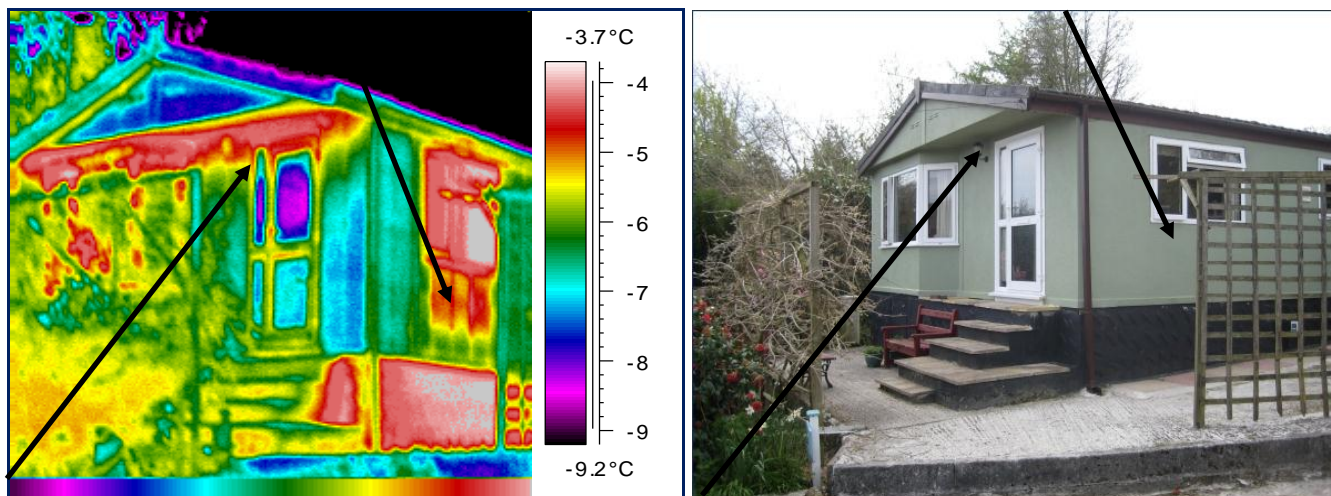
### Post-Improvement Inspection



It can be seen in the above thermal image “post-improvement” that the number of heat-loss pathways across the building envelope have been significantly reduced ( i.e. when compared to the “pre-improvement” image ).



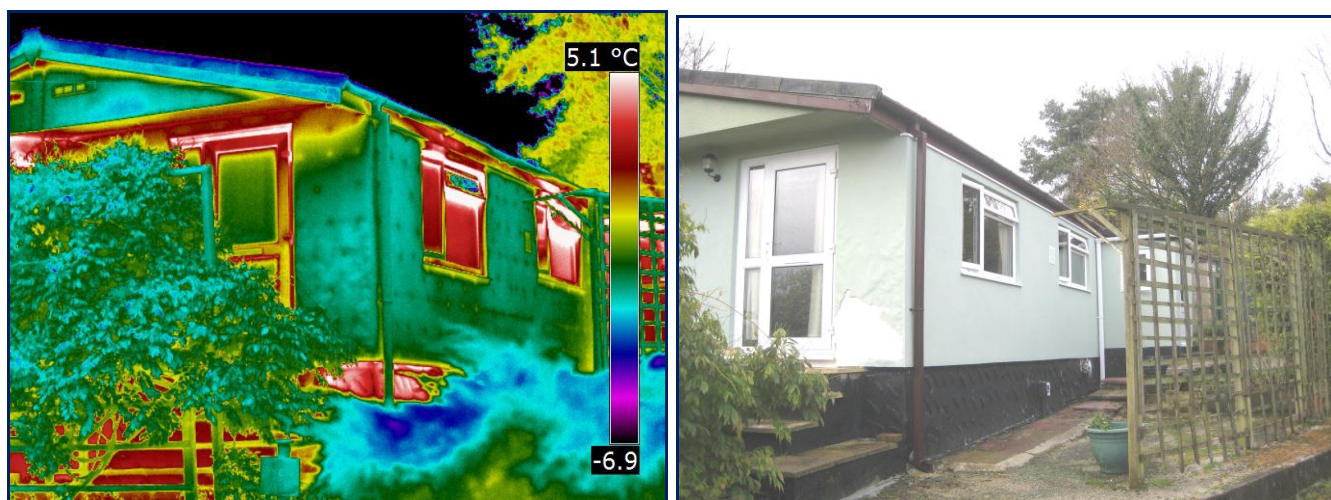
## Pre-Improvement Inspection



In the thermal image “pre-improvement”, it is clear that significant heat loss is occurring across the building envelope and that this can be attributed to thermal bridging across the timber frame construction in addition to warm air leakage at critical junction details.

The thermographic inspection also identified a number of anomalies that were indicative of heat loss occurring across the floor construction.

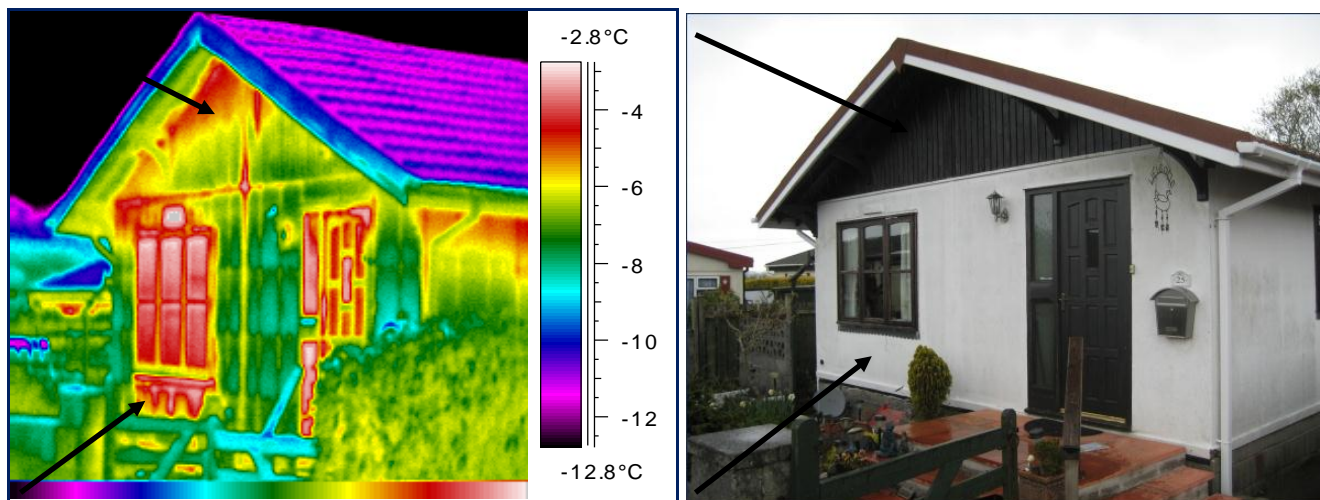
## Post-Improvement Inspection



It can be seen in the above thermal image “post-improvement” that the number of heat-loss pathways across the building envelope have been significantly reduced ( i.e. when compared to the “pre-improvement” image ).



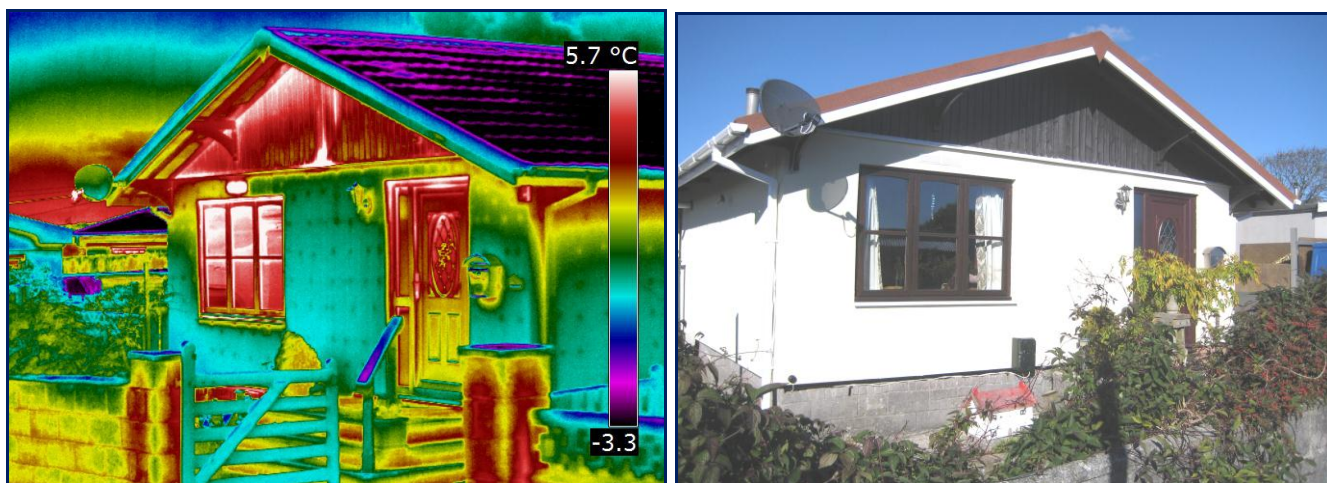
### Pre-Improvement Inspection



In the thermal image “pre-improvement”, it is clear that significant heat loss is occurring across the building envelope and that this can be attributed to thermal bridging across the timber frame construction in addition to warm air leakage at critical junction details.

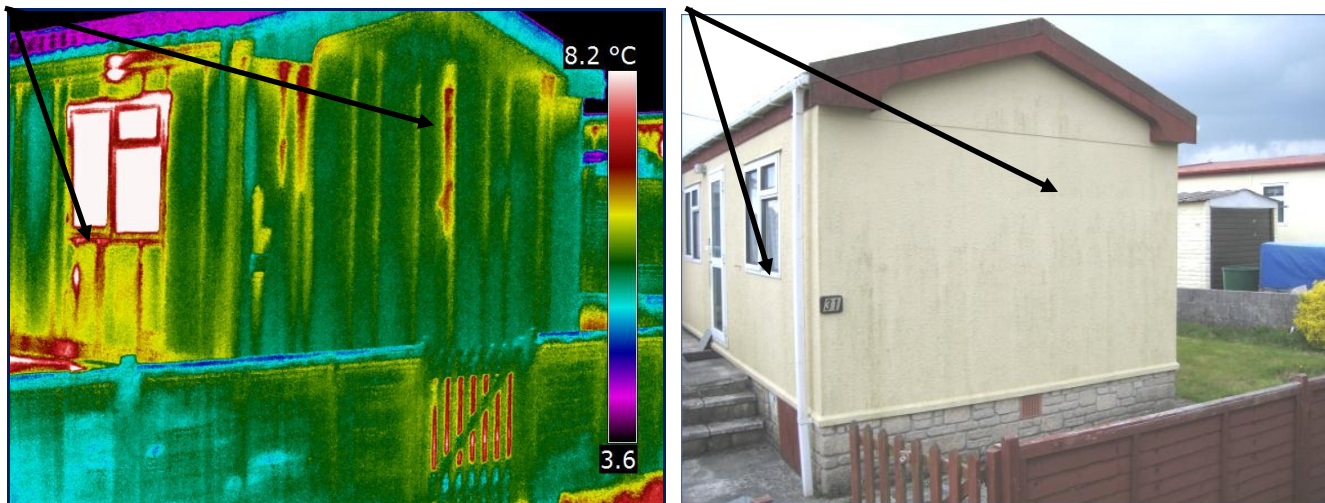
The thermographic inspection also identified a number of anomalies that were indicative of heat loss occurring across the floor construction.

### Post-Improvement Inspection



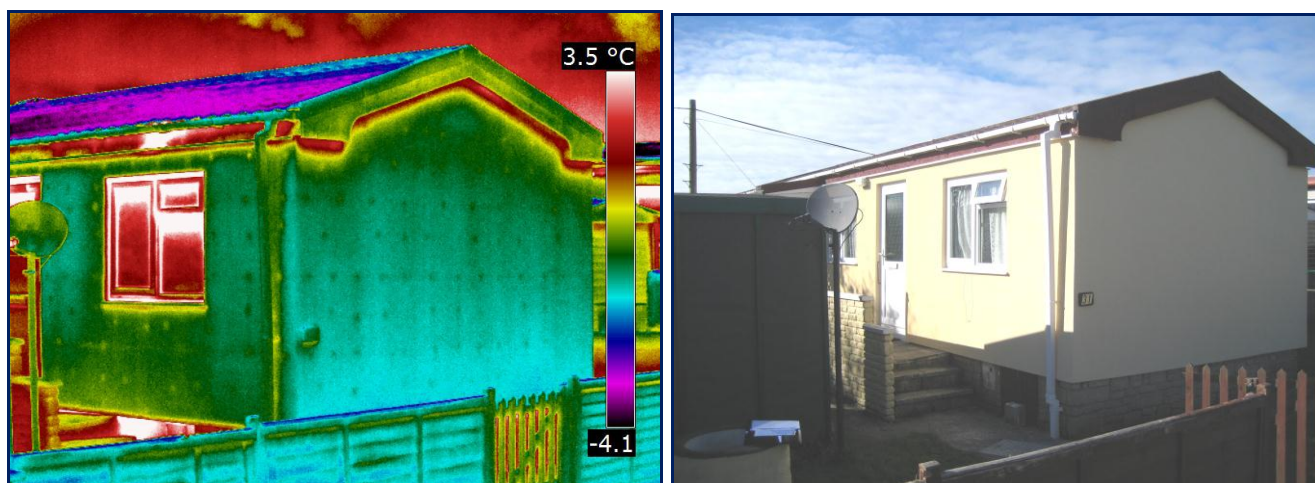
It can be seen in the above thermal image “post-improvement” that the number of heat-loss pathways across the building envelope have been significantly reduced ( i.e. when compared to the “pre-improvement” image ).



**AP 38****Pre-Improvement Inspection**

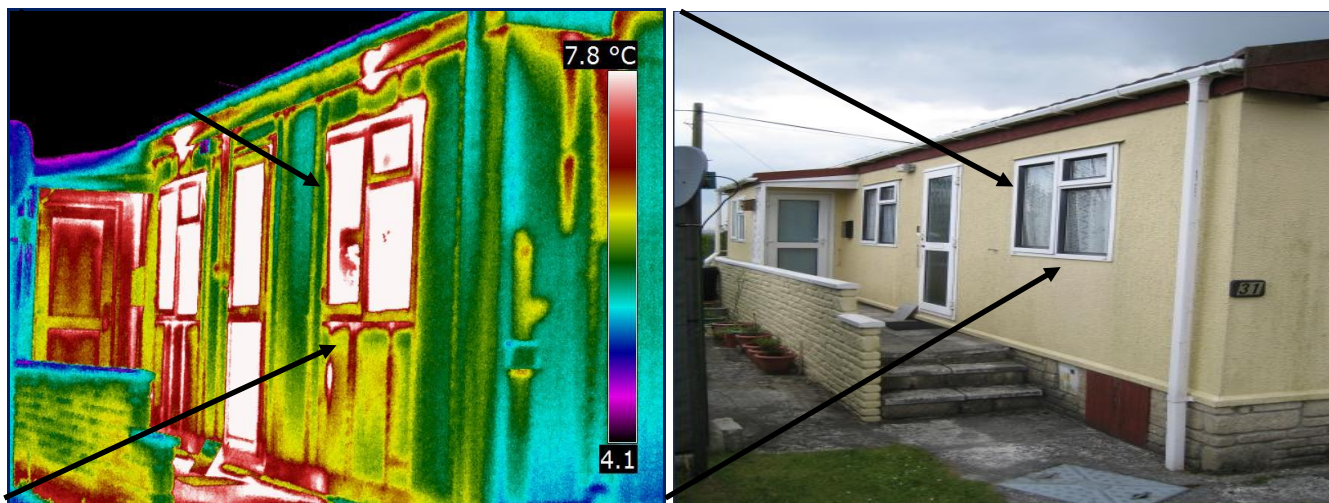
In the thermal image “pre-improvement”, it is clear that significant heat loss is occurring across the building envelope and that this can be attributed to thermal bridging across the timber frame construction in addition to warm air leakage at critical junction details.

The thermographic inspection also identified a number of anomalies that were indicative of heat loss occurring across the floor construction.

**Post-Improvement Inspection**

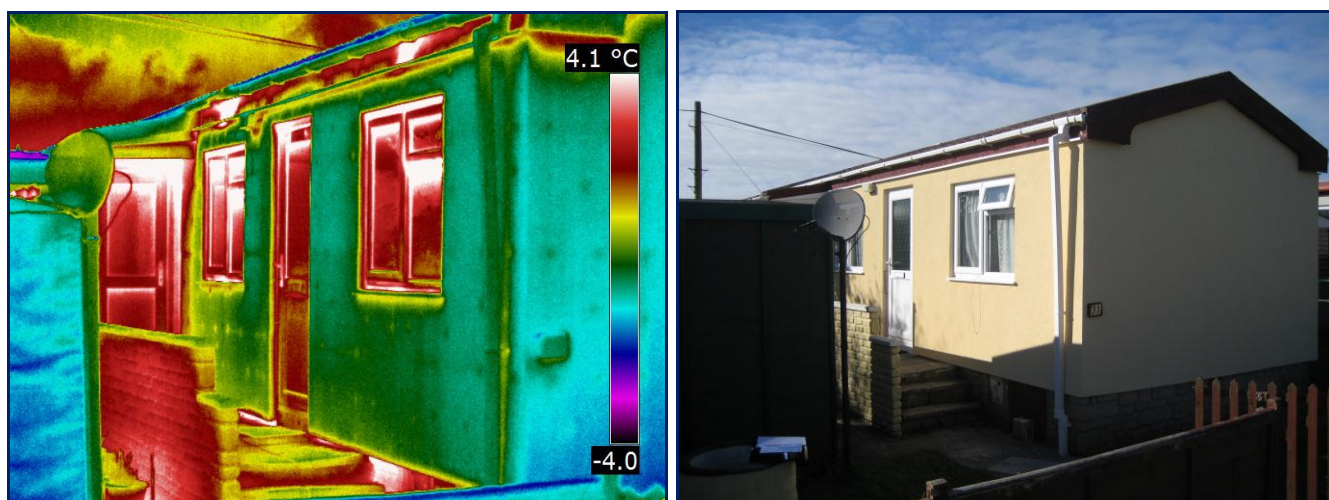
It can be seen in the above thermal image “post-improvement” that the number of heat-loss pathways across the building envelope have been significantly reduced ( i.e. when compared to the “pre-improvement” image ).



**AP 38****Pre-Improvement Inspection**

In the thermal image “pre-improvement”, it is clear that significant heat loss is occurring across the building envelope and that this can be attributed to thermal bridging across the timber frame construction in addition to warm air leakage at critical junction details.

The thermographic inspection also identified a number of anomalies that were indicative of heat loss occurring across the floor construction.

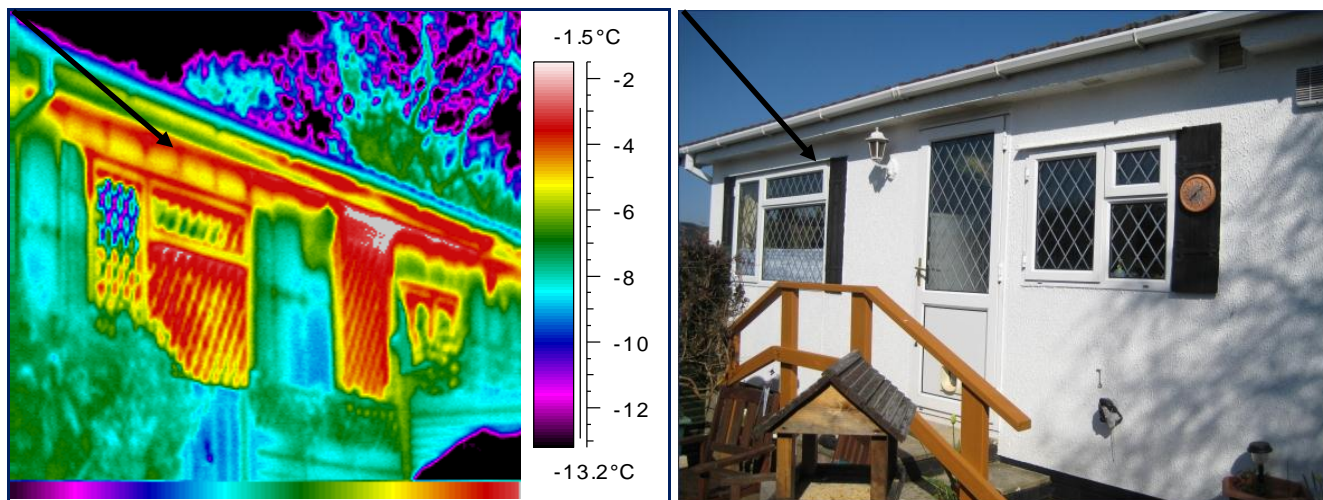
**Post-Improvement Inspection**

It can be seen in the above thermal image “post-improvement” that the number of heat-loss pathways across the building envelope have been significantly reduced ( i.e. when compared to the “pre-improvement” image ).



## AP 39

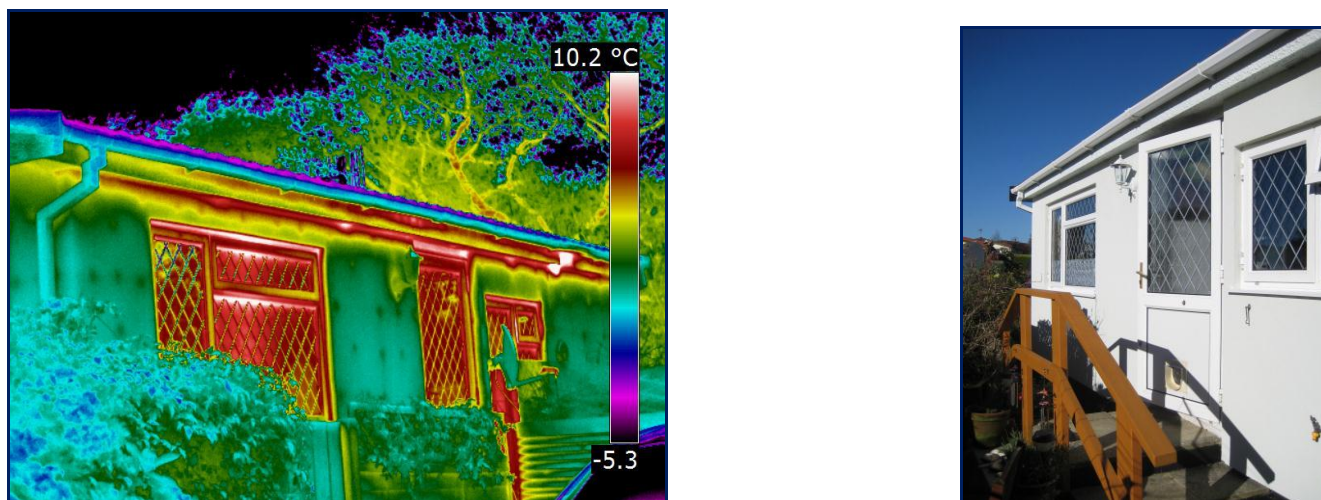
## Pre-Improvement Inspection



In the thermal image “pre-improvement”, it is clear that significant heat loss is occurring across the building envelope and that this can be attributed to thermal bridging across the timber frame construction in addition to warm air leakage at critical junction details.

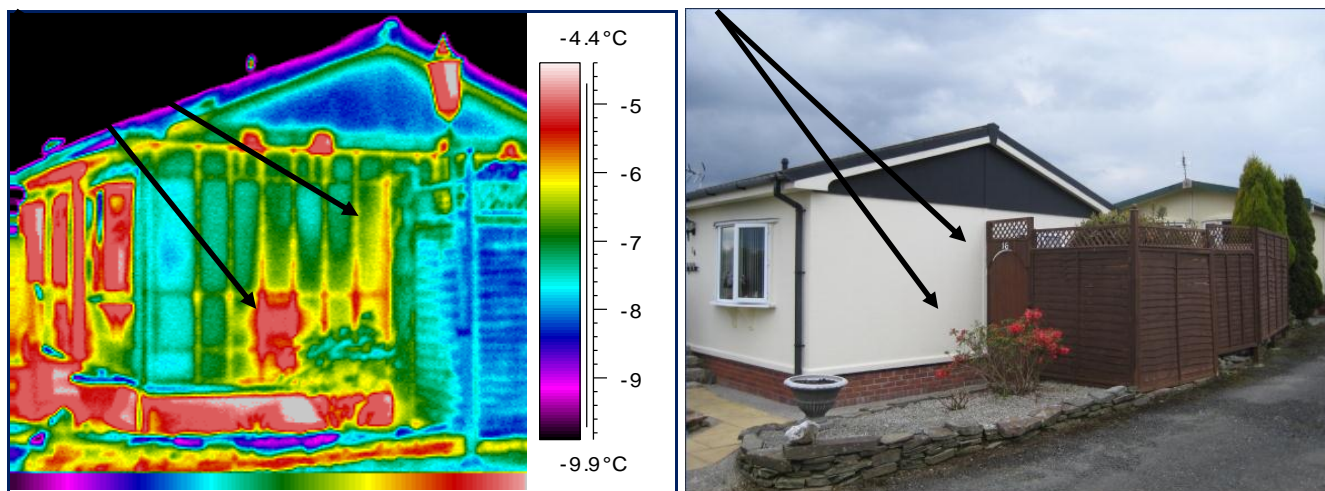
The thermographic inspection also identified a number of anomalies that were indicative of heat loss occurring across the floor construction.

## Post-Improvement Inspection



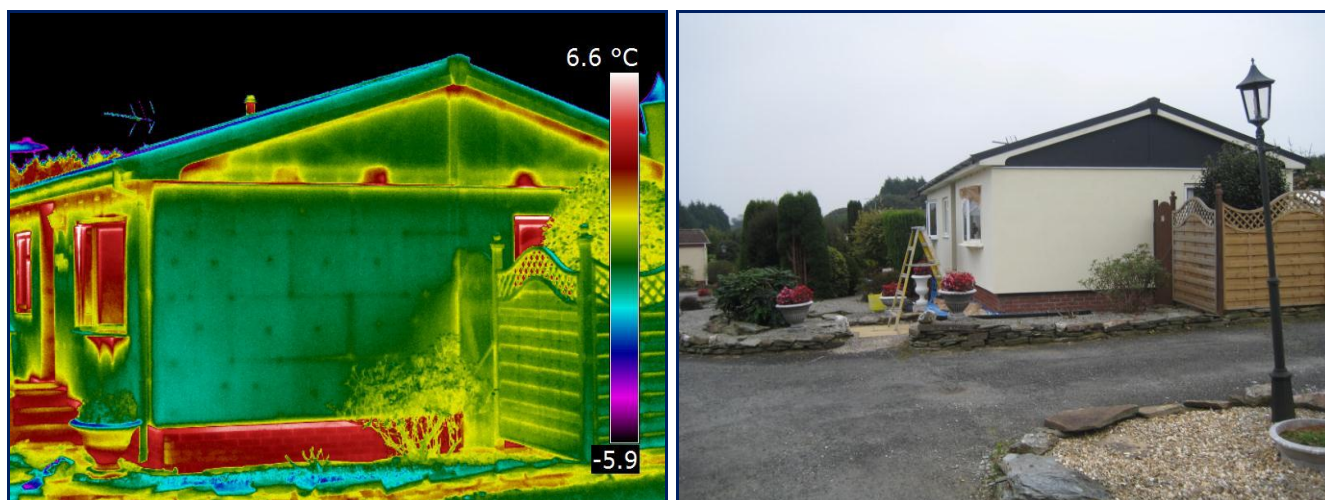
It can be seen in the above thermal image “post-improvement” that the number of heat-loss pathways across the building envelope have been significantly reduced ( i.e. when compared to the “pre-improvement” image ).



**AP 40****Pre-Improvement Inspection**

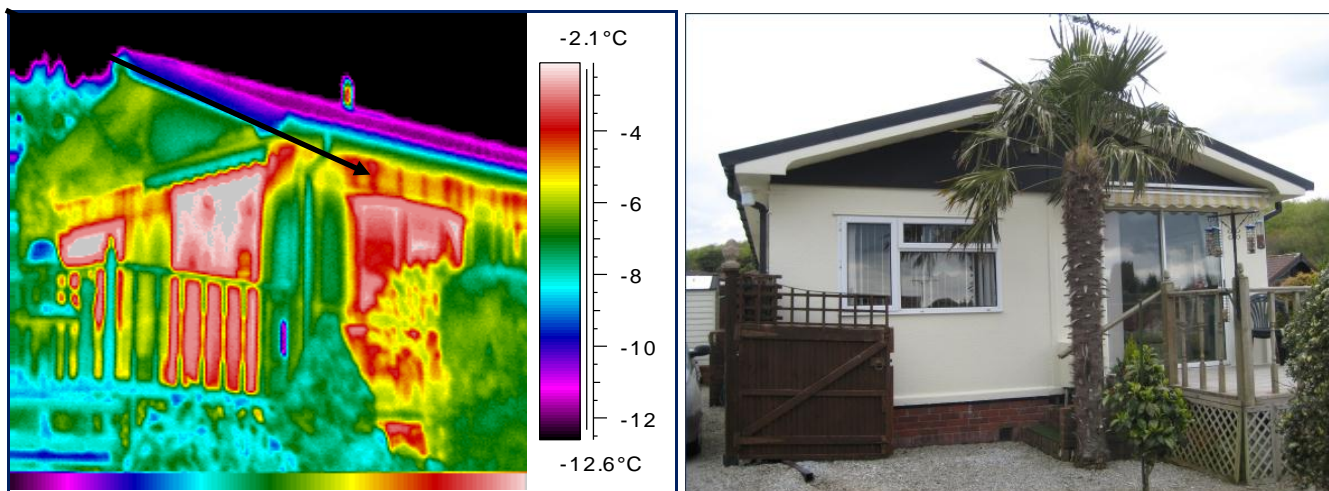
In the thermal image “pre-improvement”, it is clear that significant heat loss is occurring across the building envelope and that this can be attributed to thermal bridging across the timber frame construction in addition to warm air leakage at critical junction details.

The thermographic inspection also identified a number of anomalies that were indicative of heat loss occurring across the floor construction.

**Post-Improvement Inspection**

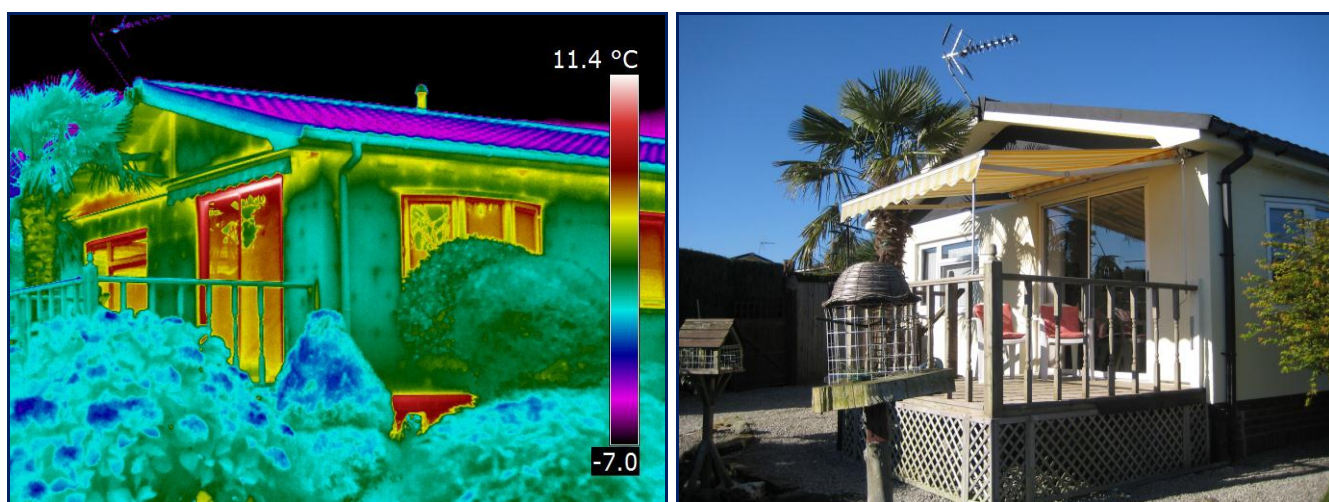
It can be seen in the above thermal image “post-improvement” that the number of heat-loss pathways across the building envelope have been significantly reduced ( i.e. when compared to the “pre-improvement” image ).



**AP 40****Pre-Improvement Inspection**

In the thermal image “pre-improvement”, it is clear that significant heat loss is occurring across the building envelope and that this can be attributed to thermal bridging across the timber frame construction in addition to warm air leakage at critical junction details.

The thermographic inspection also identified a number of anomalies that were indicative of heat loss occurring across the floor construction.

**Post-Improvement Inspection**

It can be seen in the above thermal image “post-improvement” that the number of heat-loss pathways across the building envelope have been significantly reduced ( i.e. when compared to the “pre-improvement” image ).