



Alba Building Sciences Ltd

Norham, Perth Road, Blairgowrie, PH10 6EJ

www.albasciences.com

CERT Demonstration Action UK Park Homes

SCHEME REF: SSEN09132

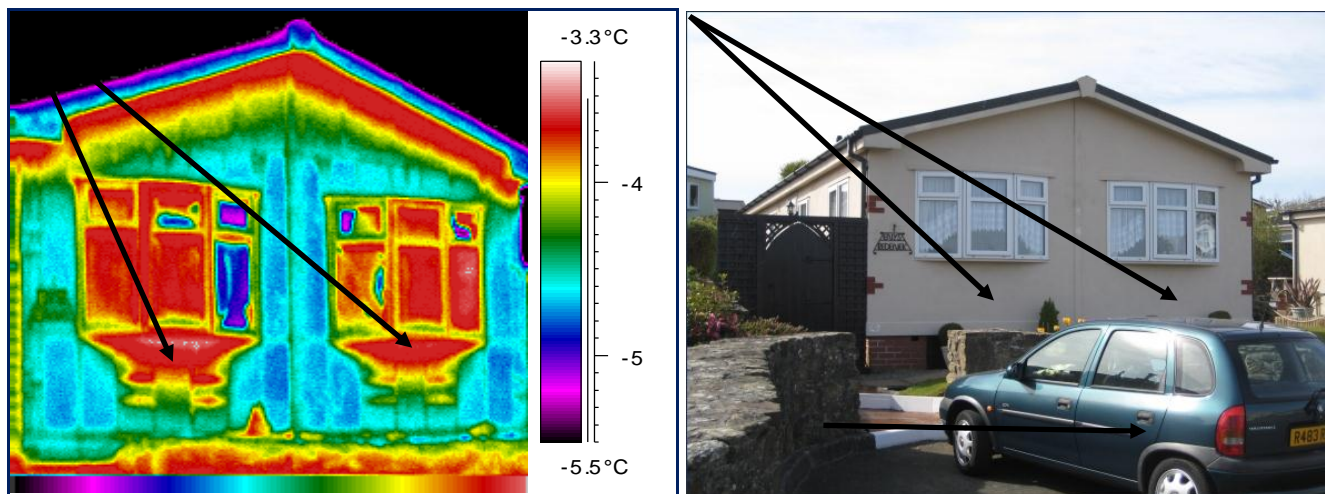
Alba Report 21050

Appendix 4D

Paraclad

Pre v Post-Improvement Thermographic Image Data

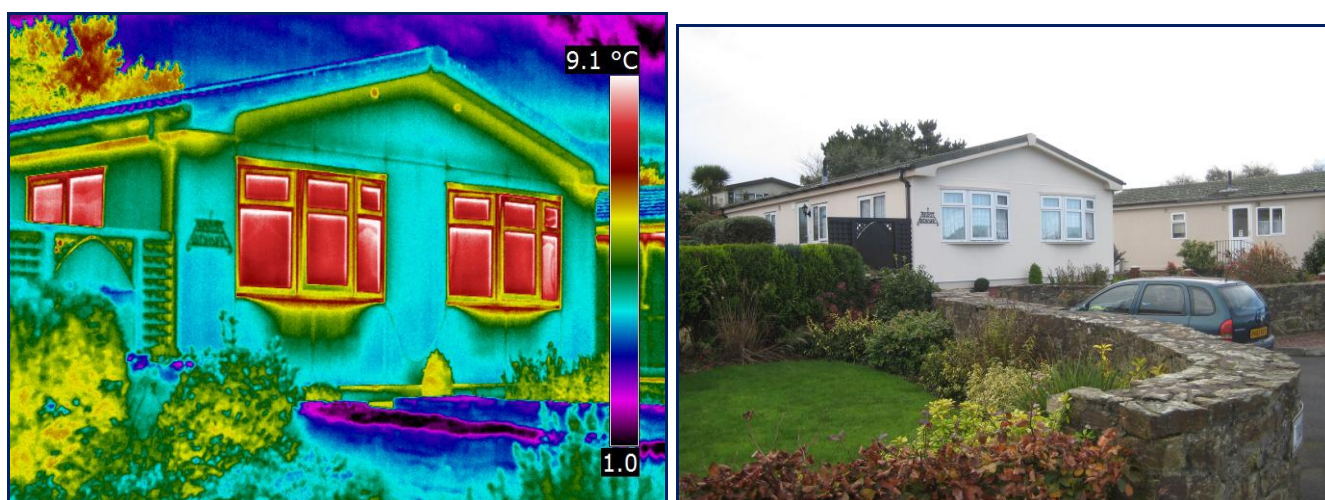
Pre-Improvement Inspection



In the thermal image “pre-improvement”, it is clear that significant heat loss is occurring across the building envelope and that this can be attributed to thermal bridging across the timber frame construction in addition to warm air leakage at critical junction details.

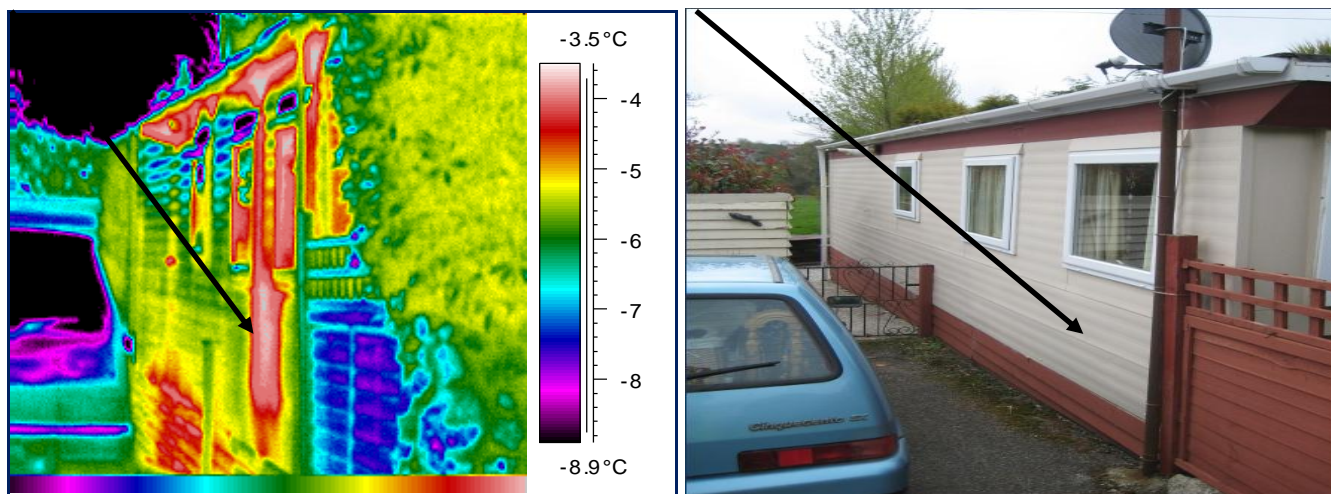
The thermographic inspection also identified a number of anomalies that were indicative of heat loss occurring across the floor construction.

Post-Improvement Inspection



It can be seen in the above thermal image “post-improvement” that the number of heat-loss pathways across the building envelope have been significantly reduced (i.e. when compared to the “pre-improvement” image).

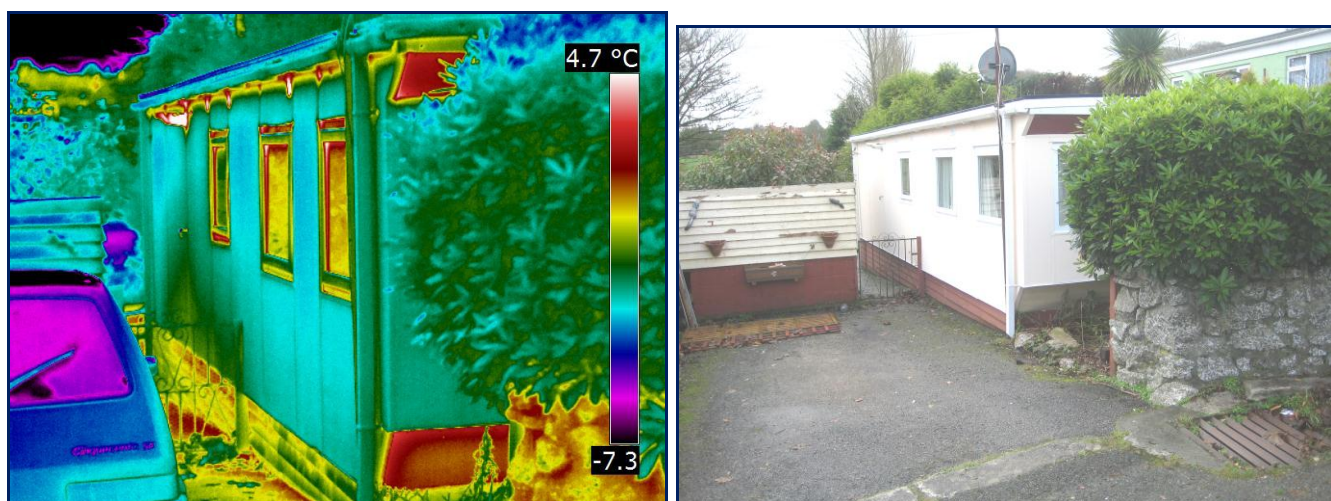
Pre-Improvement Inspection



In the thermal image “pre-improvement”, it is clear that significant heat loss is occurring across the building envelope and that this can be attributed to thermal bridging across the timber frame construction in addition to warm air leakage at critical junction details.

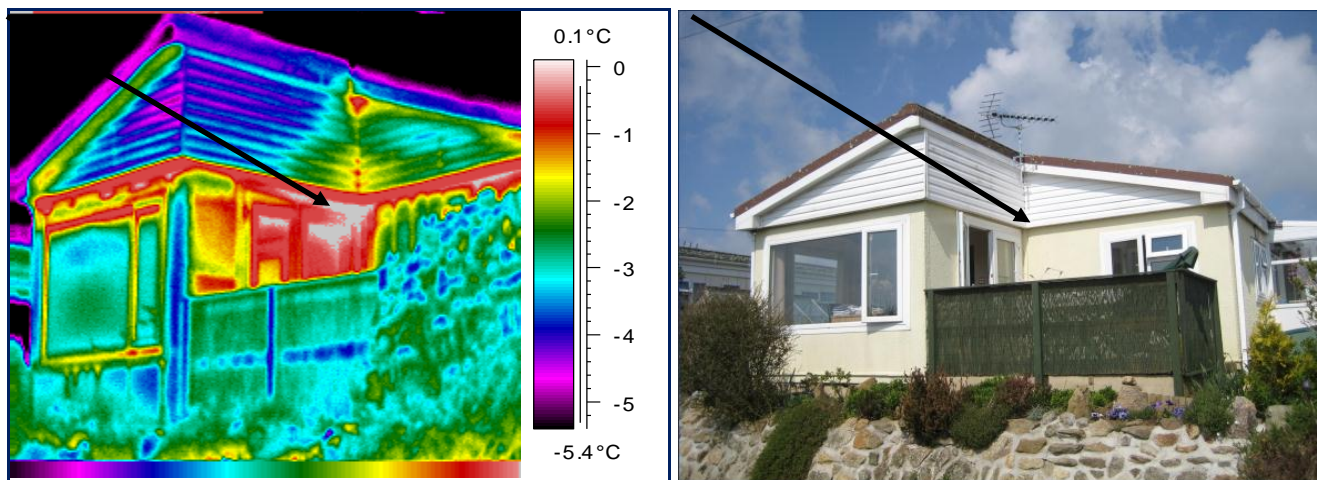
The thermographic inspection also identified a number of anomalies that were indicative of heat loss occurring across the floor construction.

Post-Improvement Inspection



It can be seen in the above thermal image “post-improvement” that the number of heat-loss pathways across the building envelope have been significantly reduced (i.e. when compared to the “pre-improvement” image).

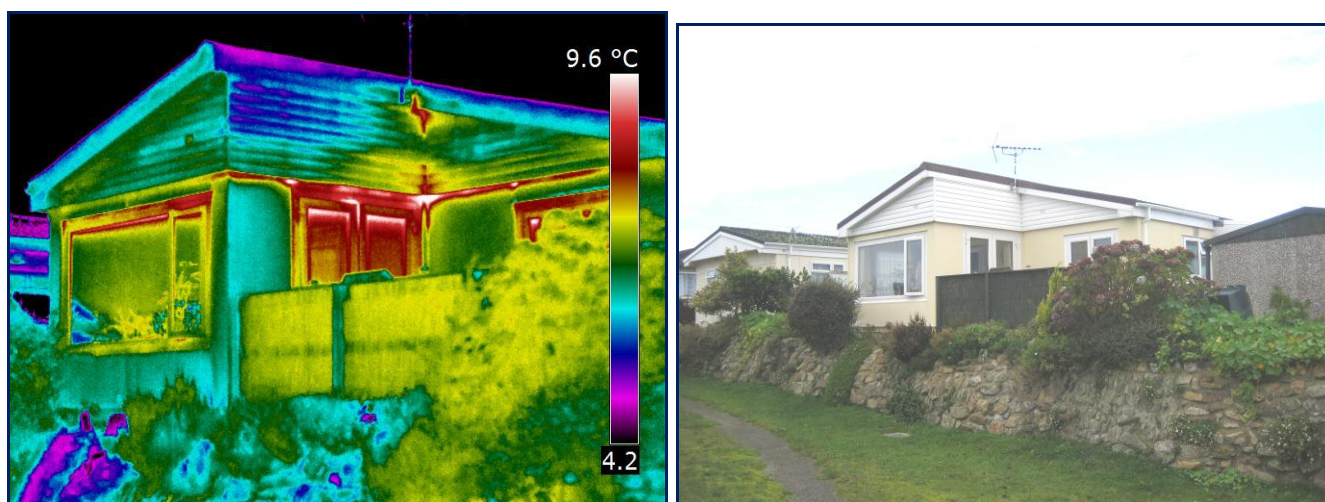
Pre-Improvement Inspection



In the thermal image “pre-improvement”, it is clear that significant heat loss is occurring across the building envelope and that this can be attributed to thermal bridging across the timber frame construction in addition to warm air leakage at critical junction details.

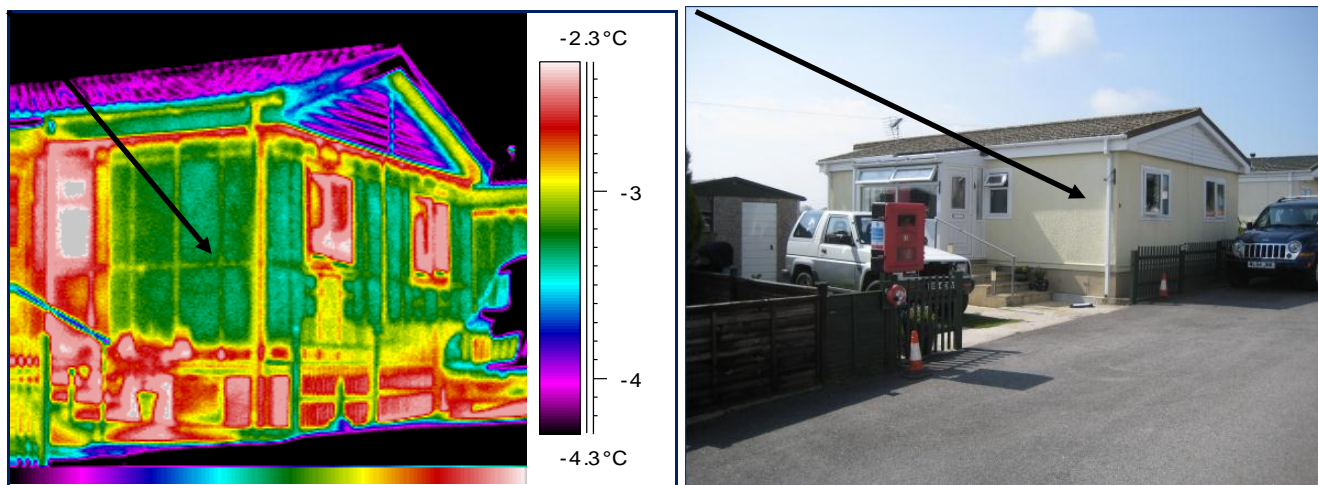
The thermographic inspection also identified a number of anomalies that were indicative of heat loss occurring across the floor construction.

Post-Improvement Inspection



It can be seen in the above thermal image “post-improvement” that the number of heat-loss pathways across the building envelope have been significantly reduced (i.e. when compared to the “pre-improvement” image).

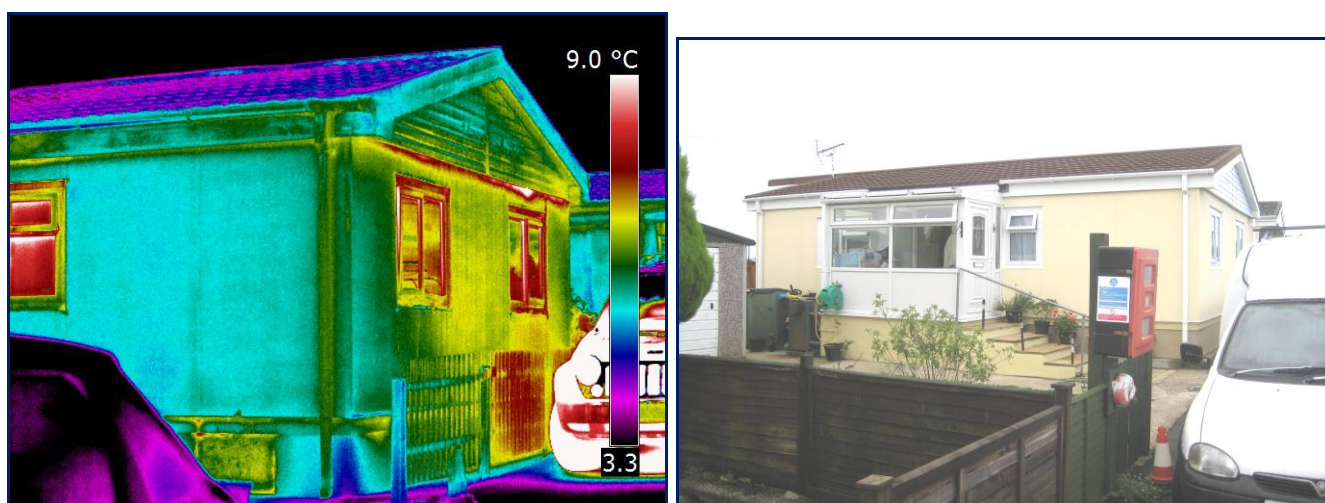
Pre-Improvement Inspection



In the thermal image “pre-improvement”, it is clear that significant heat loss is occurring across the building envelope and that this can be attributed to thermal bridging across the timber frame construction in addition to warm air leakage at critical junction details.

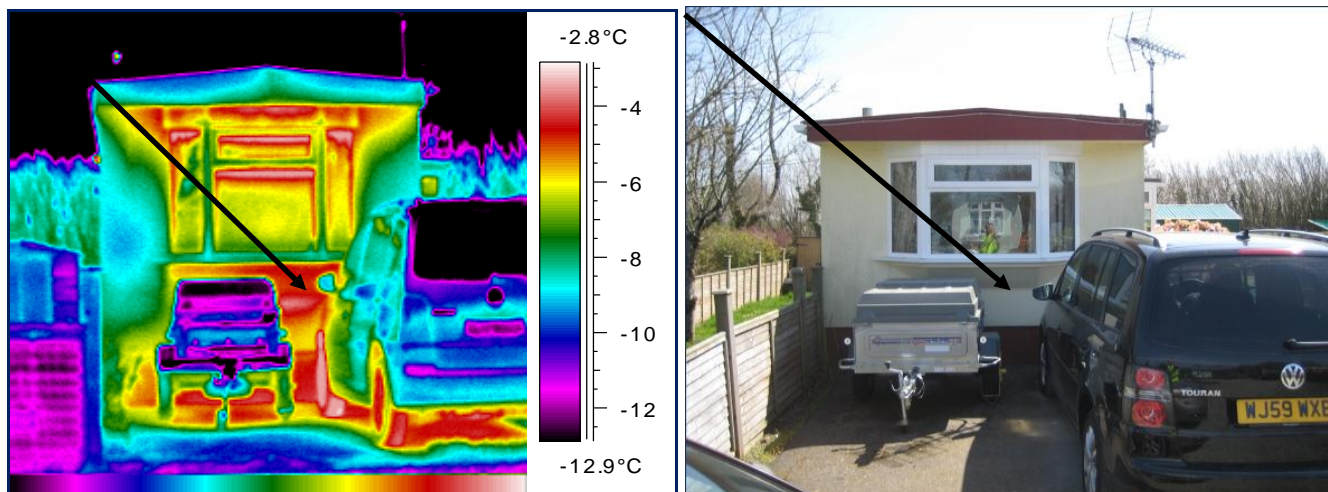
The thermographic inspection also identified a number of anomalies that were indicative of heat loss occurring across the floor construction.

Post-Improvement Inspection



It can be seen in the above thermal image “post-improvement” that the number of heat-loss pathways across the building envelope have been significantly reduced (i.e. when compared to the “pre-improvement” image).

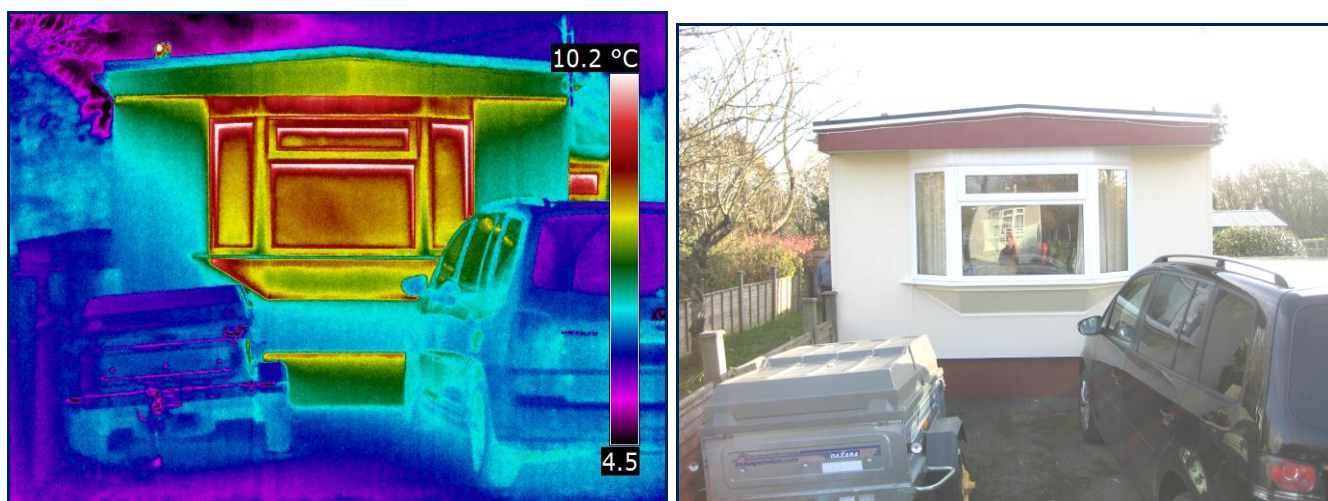
Pre-Improvement Inspection



In the thermal image “pre-improvement”, it is clear that significant heat loss is occurring across the building envelope and that this can be attributed to thermal bridging across the timber frame construction in addition to warm air leakage at critical junction details.

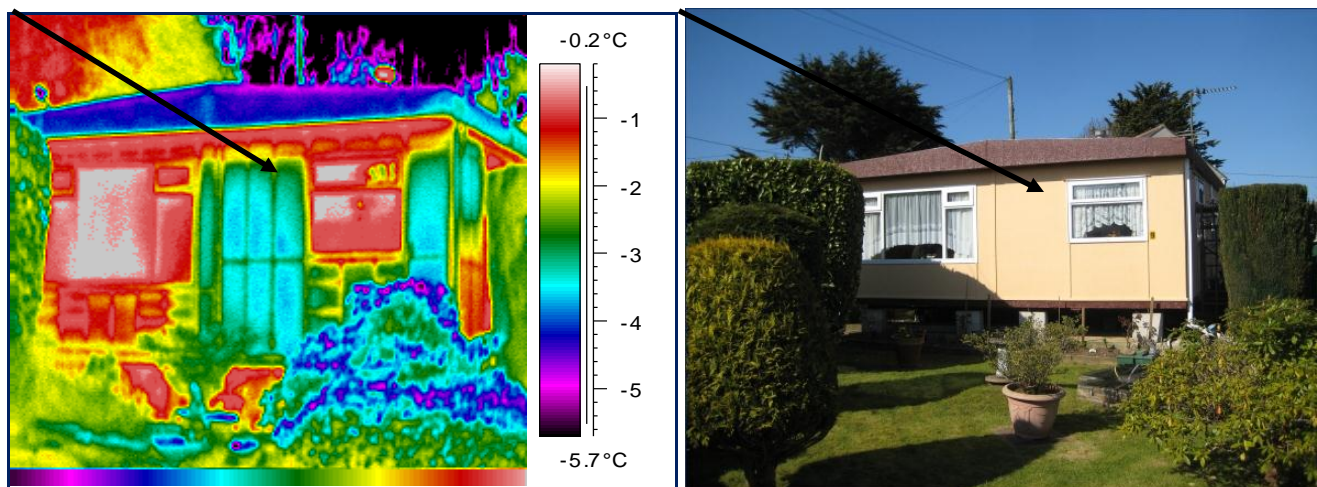
The thermographic inspection also identified a number of anomalies that were indicative of heat loss occurring across the floor construction.

Post-Improvement Inspection



It can be seen in the above thermal image “post-improvement” that the number of heat-loss pathways across the building envelope have been significantly reduced (i.e. when compared to the “pre-improvement” image).

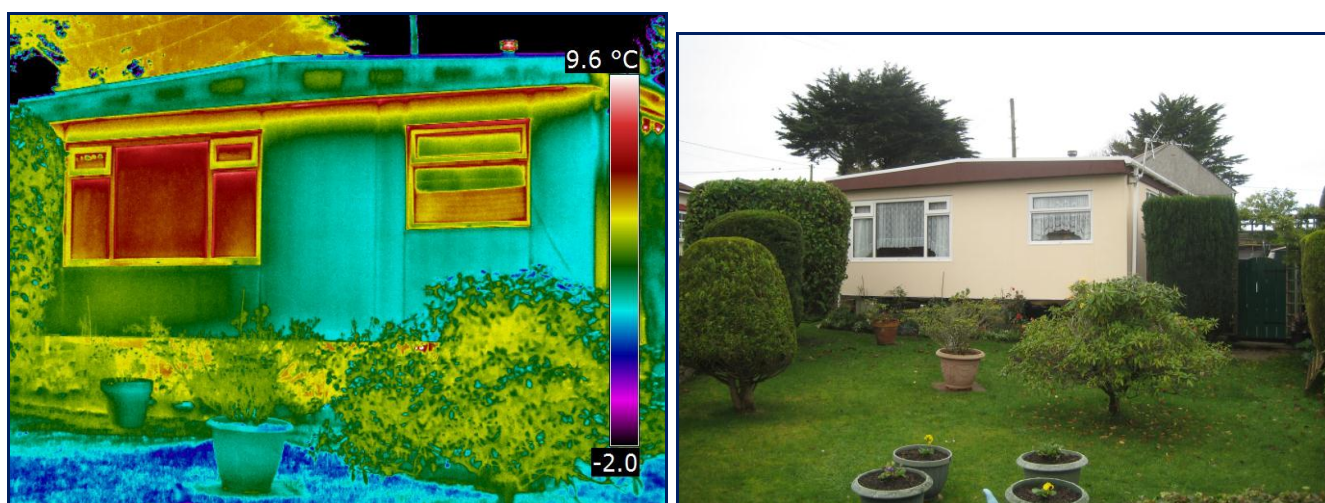
Pre-Improvement Inspection



In the thermal image “pre-improvement”, it is clear that significant heat loss is occurring across the building envelope and that this can be attributed to thermal bridging across the timber frame construction in addition to warm air leakage at critical junction details.

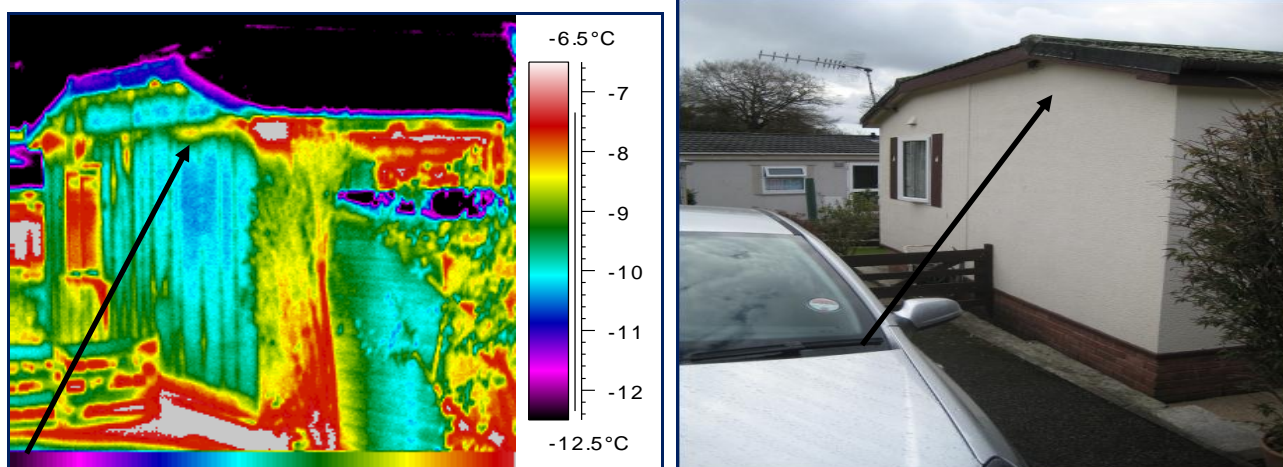
The thermographic inspection also identified a number of anomalies that were indicative of heat loss occurring across the floor construction.

Post-Improvement Inspection



It can be seen in the above thermal image “post-improvement” that the number of heat-loss pathways across the building envelope have been significantly reduced (i.e. when compared to the “pre-improvement” image).

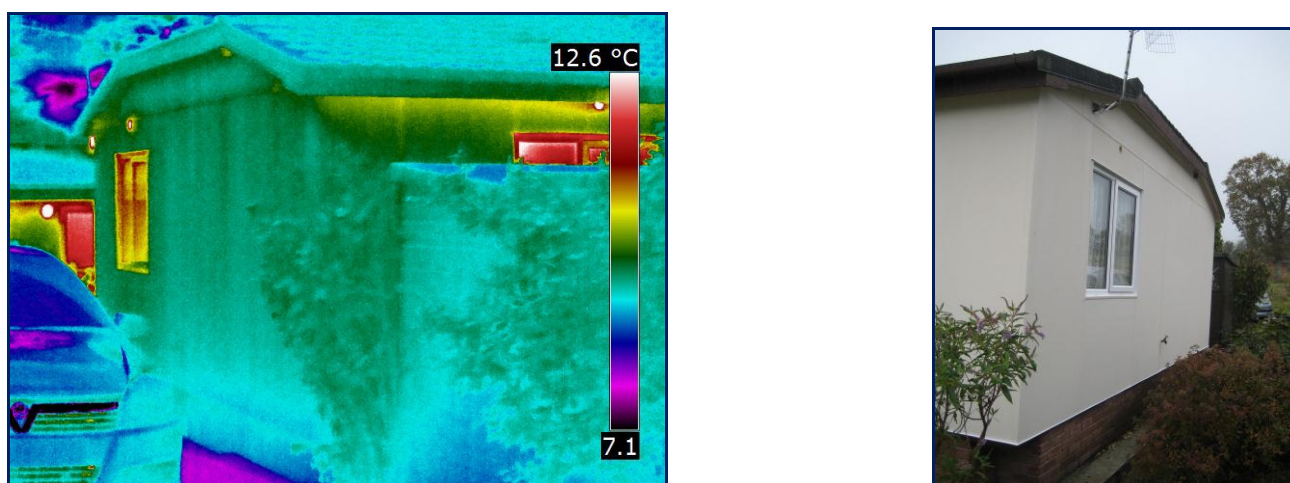
Pre-Improvement Inspection



In the thermal image “pre-improvement”, it is clear that significant heat loss is occurring across the building envelope and that this can be attributed to thermal bridging across the timber frame construction in addition to warm air leakage at critical junction details.

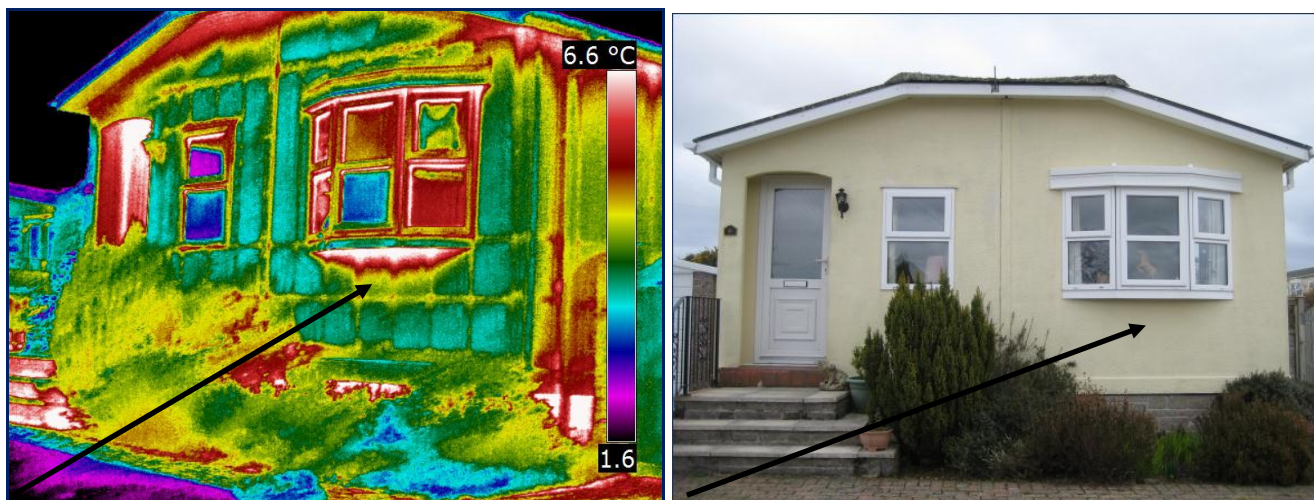
The thermographic inspection also identified a number of anomalies that were indicative of heat loss occurring across the floor construction.

Post-Improvement Inspection



It can be seen in the above thermal image “post-improvement” that the number of heat-loss pathways across the building envelope have been significantly reduced (i.e. when compared to the “pre-improvement” image).

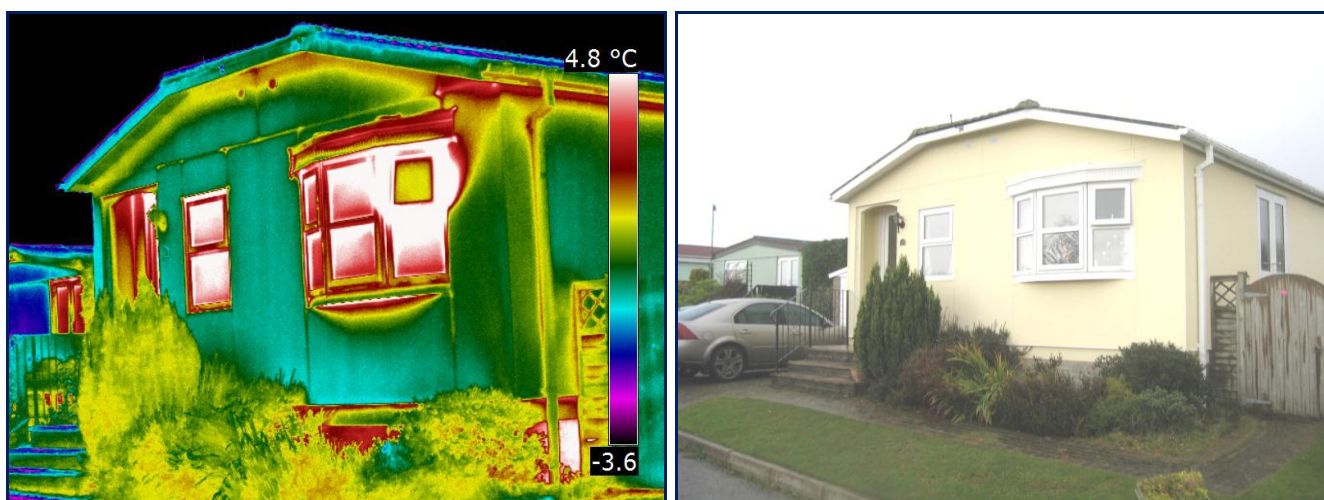
Pre-Improvement Inspection



In the thermal image “pre-improvement”, it is clear that significant heat loss is occurring across the building envelope and that this can be attributed to thermal bridging across the timber frame construction in addition to warm air leakage at critical junction details.

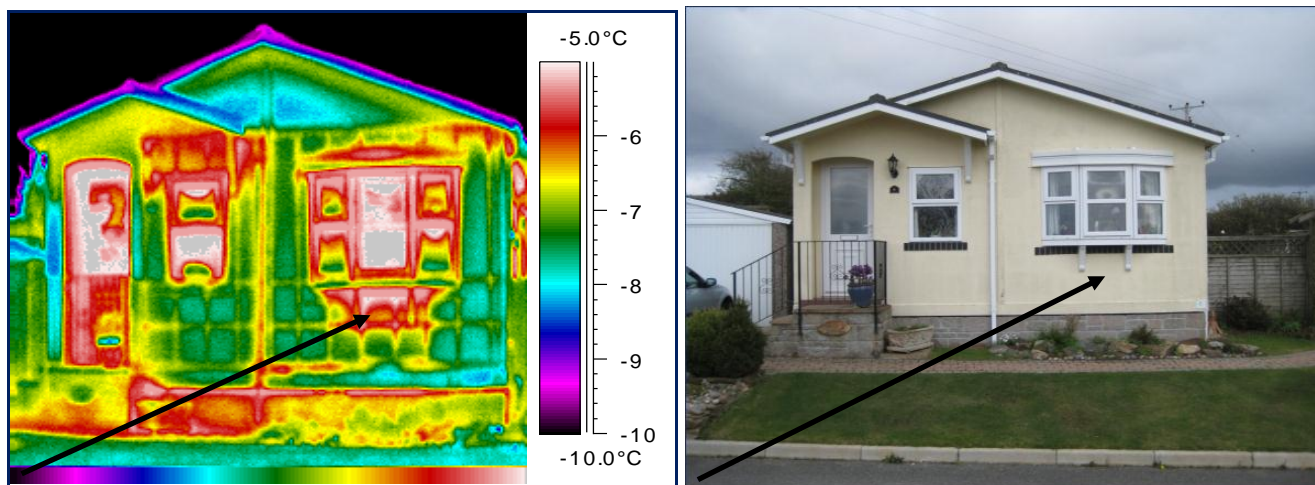
The thermographic inspection also identified a number of anomalies that were indicative of heat loss occurring across the floor construction.

Post-Improvement Inspection



It can be seen in the above thermal image “post-improvement” that the number of heat-loss pathways across the building envelope have been significantly reduced (i.e. when compared to the “pre-improvement” image).

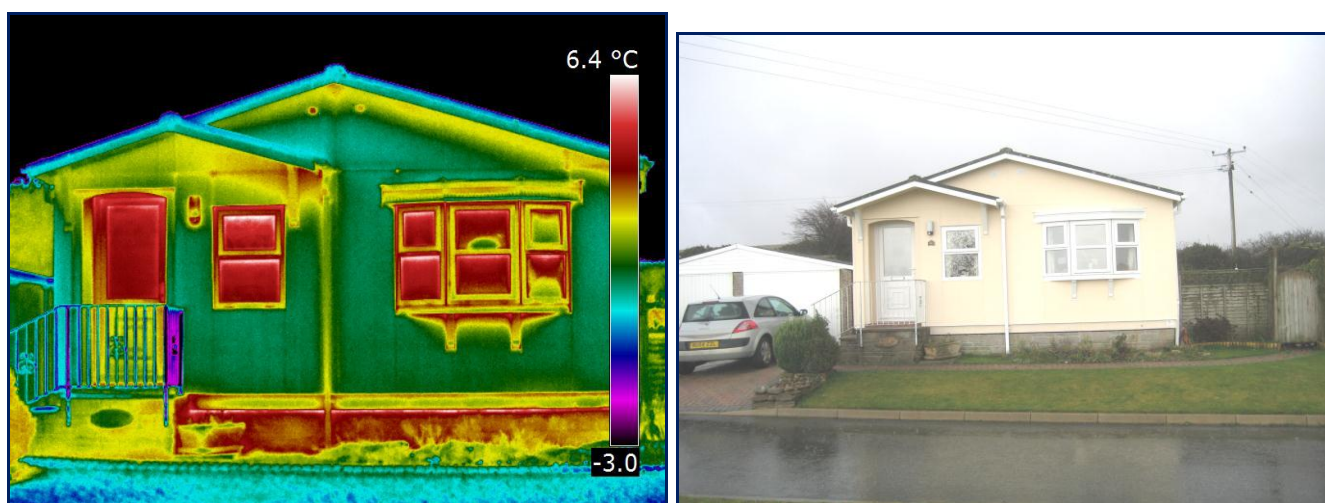
Pre-Improvement Inspection



In the thermal image “pre-improvement”, it is clear that significant heat loss is occurring across the building envelope and that this can be attributed to thermal bridging across the timber frame construction in addition to warm air leakage at critical junction details.

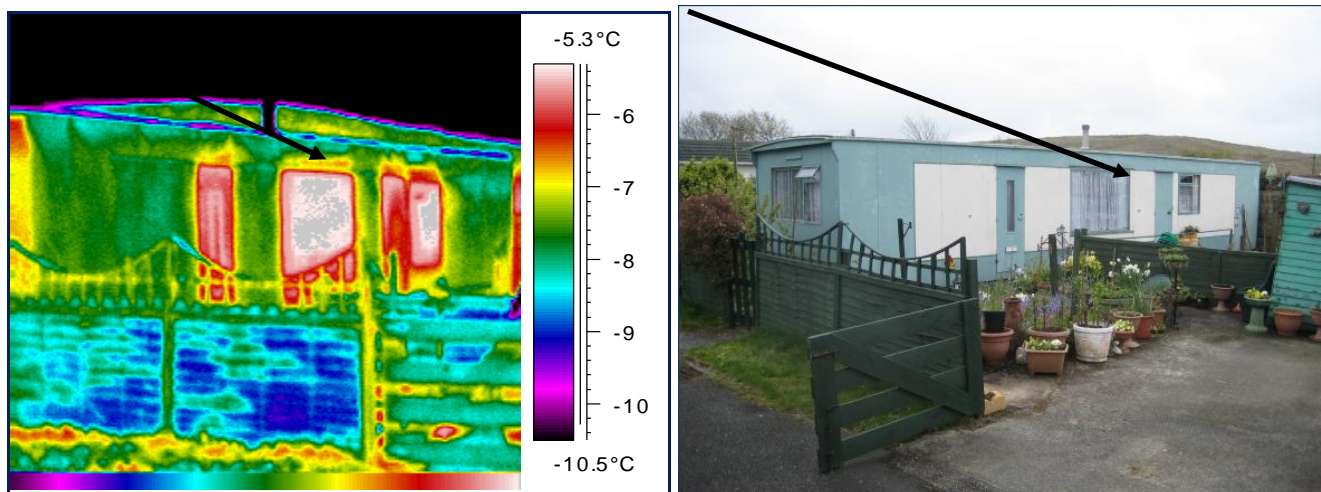
The thermographic inspection also identified a number of anomalies that were indicative of heat loss occurring across the floor construction.

Post-Improvement Inspection



It can be seen in the above thermal image “post-improvement” that the number of heat-loss pathways across the building envelope have been significantly reduced (i.e. when compared to the “pre-improvement” image).

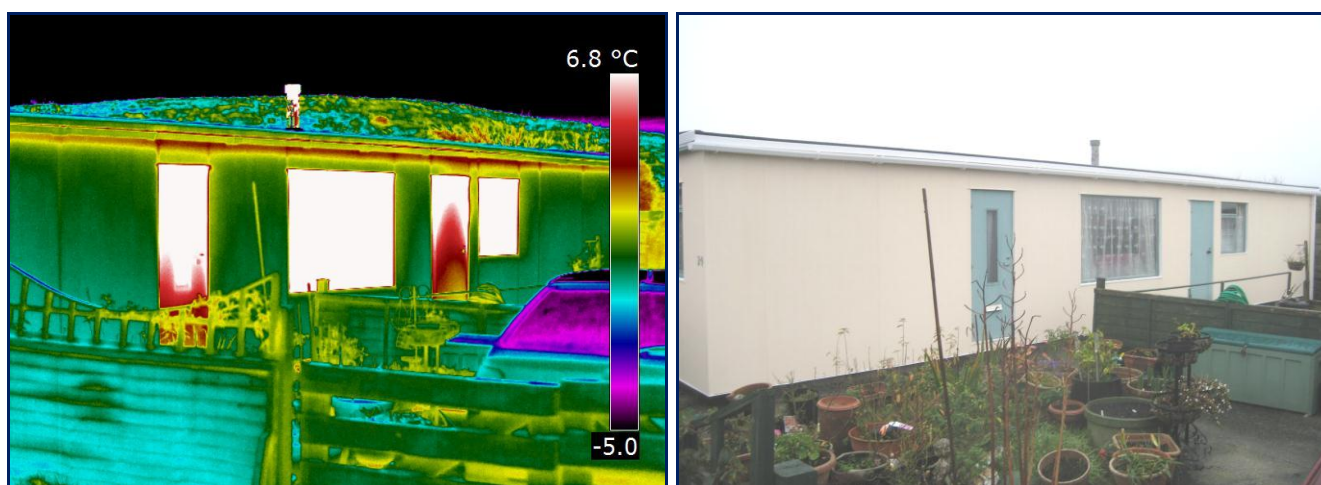
Pre-Improvement Inspection



In the thermal image “pre-improvement”, it is clear that significant heat loss is occurring across the building envelope and that this can be attributed to thermal bridging across the timber frame construction in addition to warm air leakage at critical junction details.

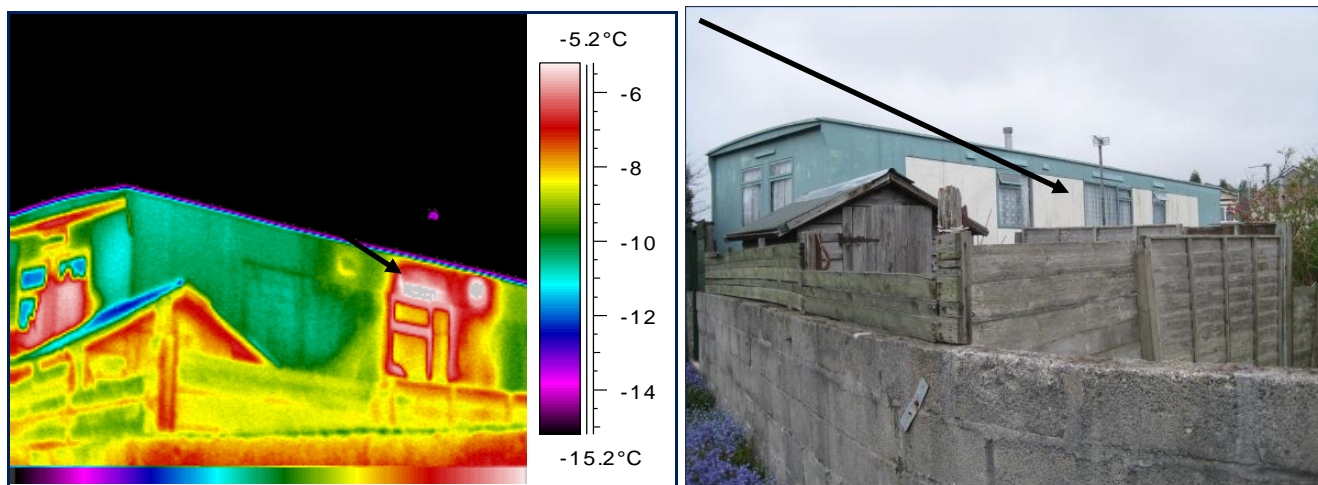
The thermographic inspection also identified a number of anomalies that were indicative of heat loss occurring across the floor construction.

Post-Improvement Inspection



It can be seen in the above thermal image “post-improvement” that the number of heat-loss pathways across the building envelope have been significantly reduced (i.e. when compared to the “pre-improvement” image).

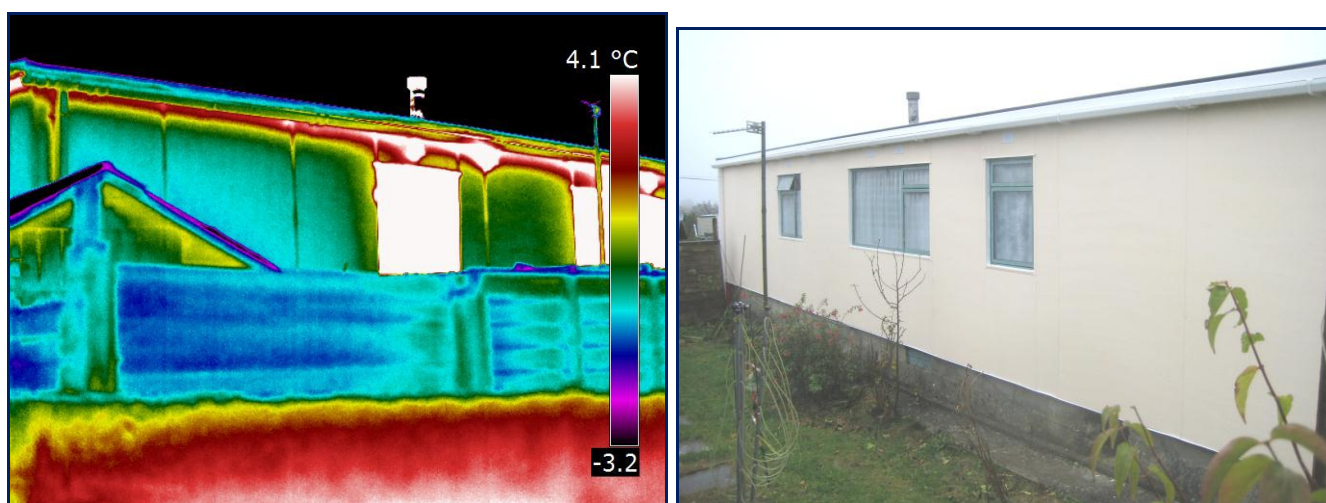
Pre-Improvement Inspection



In the thermal image “pre-improvement”, it is clear that significant heat loss is occurring across the building envelope and that this can be attributed to thermal bridging across the timber frame construction in addition to warm air leakage at critical junction details.

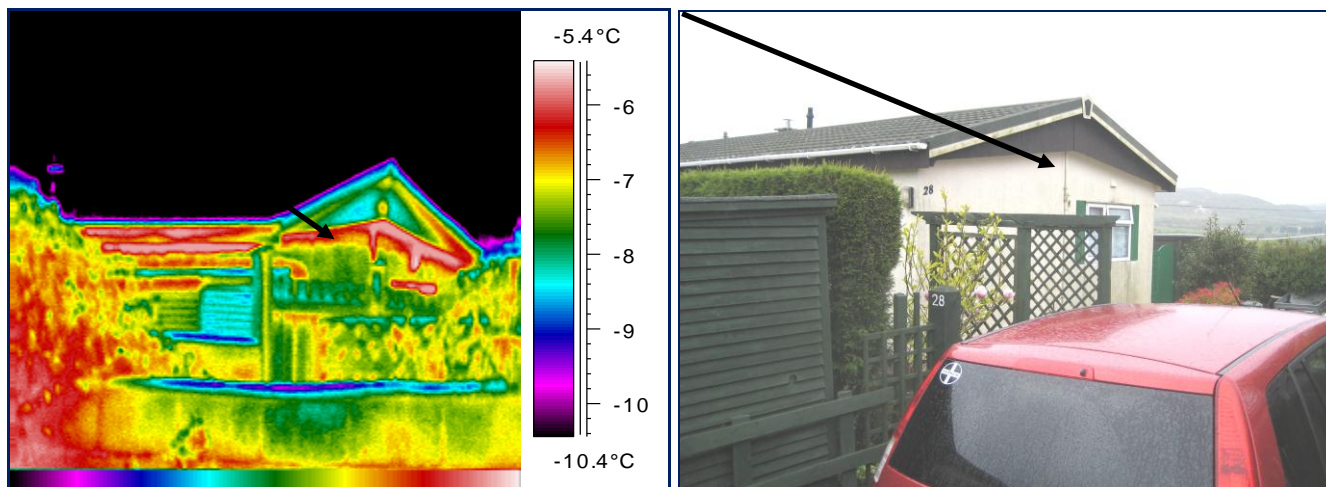
The thermographic inspection also identified a number of anomalies that were indicative of heat loss occurring across the floor construction.

Post-Improvement Inspection



It can be seen in the above thermal image “post-improvement” that the number of heat-loss pathways across the building envelope have been significantly reduced (i.e. when compared to the “pre-improvement” image).

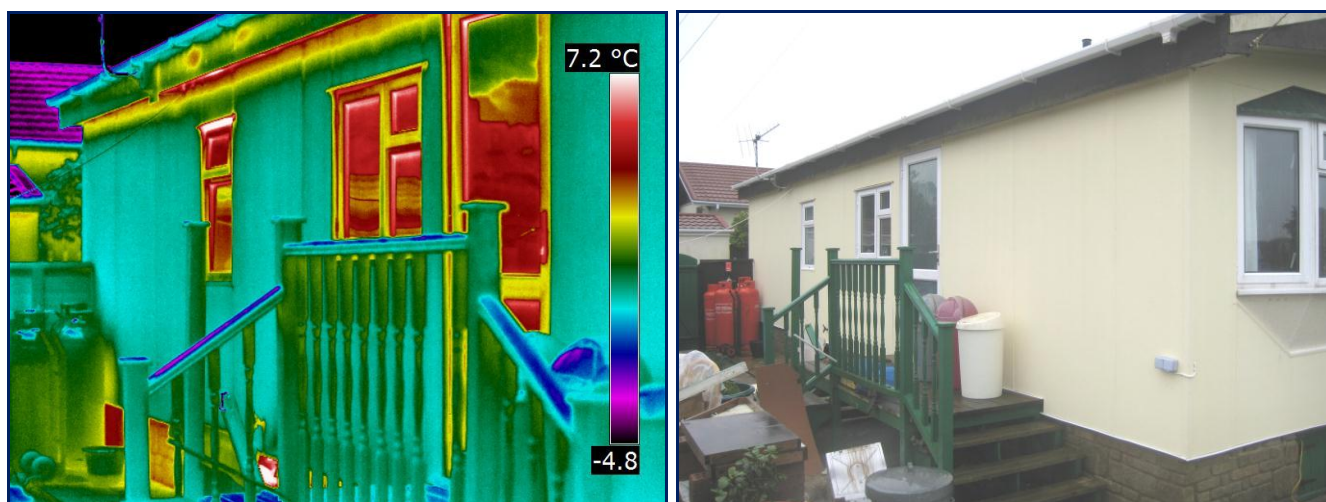
Pre-Improvement Inspection



In the thermal image “pre-improvement”, it is clear that significant heat loss is occurring across the building envelope and that this can be attributed to thermal bridging across the timber frame construction in addition to warm air leakage at critical junction details.

The thermographic inspection also identified a number of anomalies that were indicative of heat loss occurring across the floor construction.

Post-Improvement Inspection



It can be seen in the above thermal image “post-improvement” that the number of heat-loss pathways across the building envelope have been significantly reduced (i.e. when compared to the “pre-improvement” image).