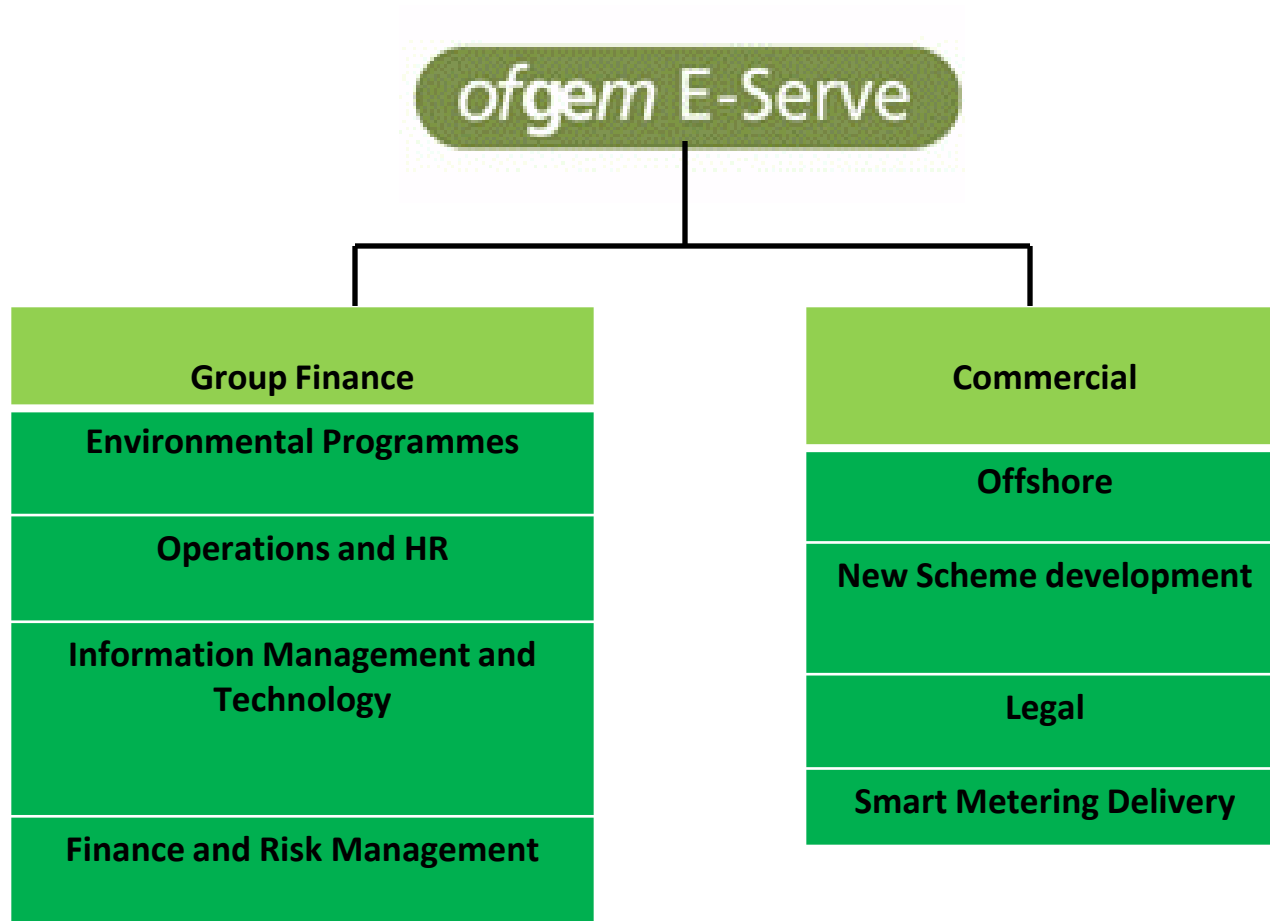


# **The role of E-Serve and the New Scheme Development Team**

Ashley Malster  
Senior Manager  
New Scheme Development

*ofgem* E-Serve

- E-Serve created September 2009
- To better meet Ofgem's duties and obligations for both today's and also tomorrow's consumer.
- Responsible for Ofgem's support and delivery functions.
- Sustainability key focus



## Responsibilities Include

- Administration of existing **environmental programmes:** Renewable Obligation (RO), Carbon Emission Reduction Target (CERT) & The Community Energy Saving Programme (CESP)
- Delivery of **sustainability projects:** offshore transmission, smart meters
- Other **new schemes** proposed by Government

## **New Schemes**

Feed-In Tariff  
(FIT)

Renewable Heat  
Incentive (RHI)

Carbon Capture  
and Storage

Social Tariffs?

## Purpose of New Scheme Development team

- To set up the processes needed for Ofgem to administer new environmental/sustainability schemes that the Government has asked Ofgem to administer
  - To set these up to be administered as efficiently and effectively as possible
  - To influence policy and legislation to take account of this
  - To ensure these schemes are established to be consistent with broader Ofgem policy (where possible)
- To further develop the processes and administration of existing projects currently administered by Ofgem E-Serve

## **The Role of E-Serve in administering the Feed-in Tariff**

***CAVEAT: working assumptions – still to be formally confirmed by DECC***

### **Accreditation of generators:**

- sub 50kW wind, solar and fossil-fuel CHP to be accredited through the Microgeneration Certification Scheme (MCS)
- Other generators accredited by Ofgem using the “ROO-FIT” process – based on existing RO

### **Central FIT Register**

- Helps ensure compliance, mitigate fraud, find errors & facilitate switching
- Ofgem to build and administer FIT register
- FIT suppliers need to register their customers before paying FITs
- Aiming for temporary version from 1 April, full solution from 1 July

## **Role (continued)**

### **Levelisation and cost recovery process**

- Financial burden of FITs payments spread over all suppliers
- Ofgem to carry out “Levelisation” process

### **Monitoring / Securing supplier compliance**

- Ofgem have power to enforce license requirements on suppliers
- Expect fraud prevention to be a shared responsibility across all parties

### **Reporting**

- Expect public reporting function: eg statistics, Annual Report





# *ofgem* E-Serve

Promoting choice and value  
for all gas and electricity customers