

The background features a large, stylized white arrow pointing right, overlaid on a blurred image of a modern building with a glass facade and a large, glowing orange and white swirl, possibly representing energy or a logo element.

# New look Ofgem

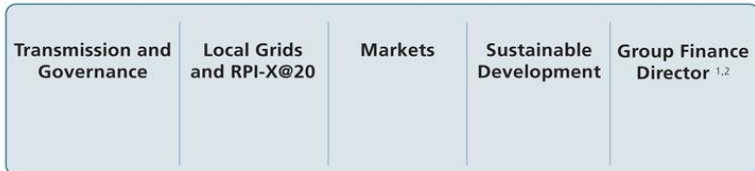
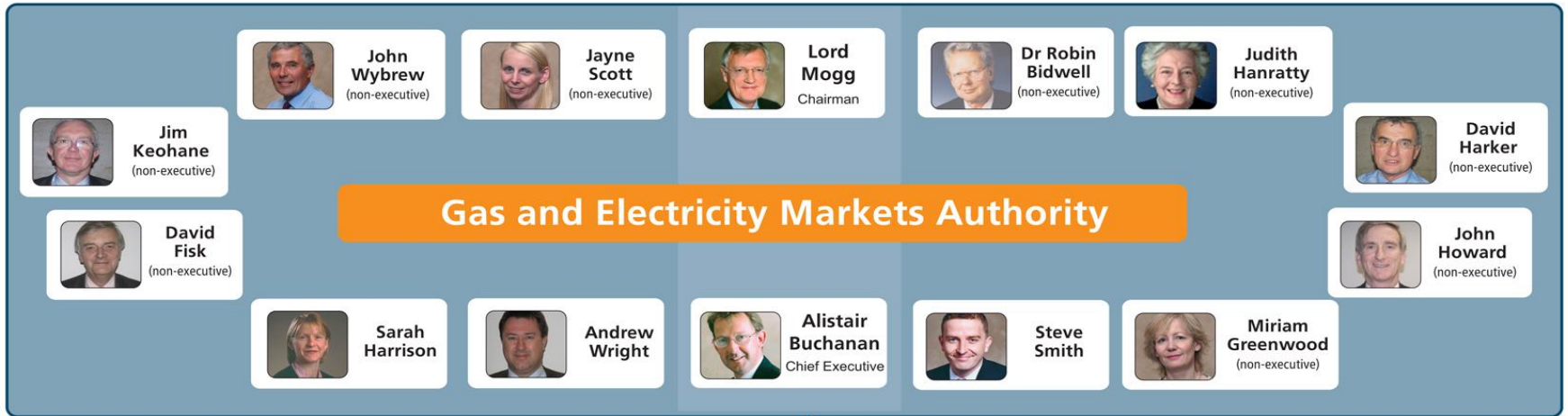
Georgia Broome  
Head of Internal Communications,  
Digital and Print

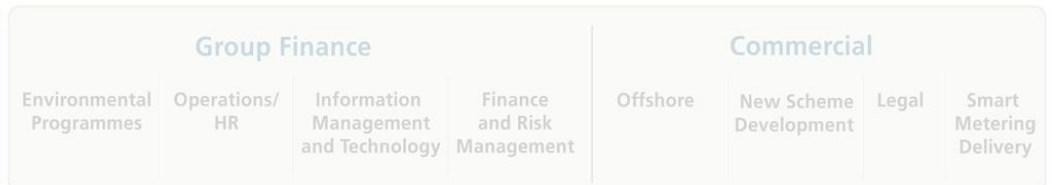
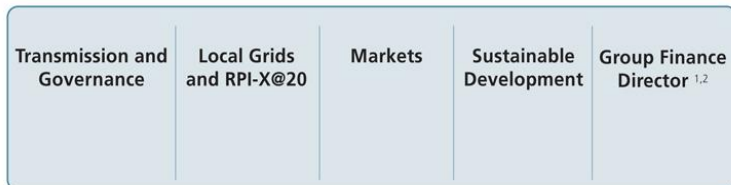
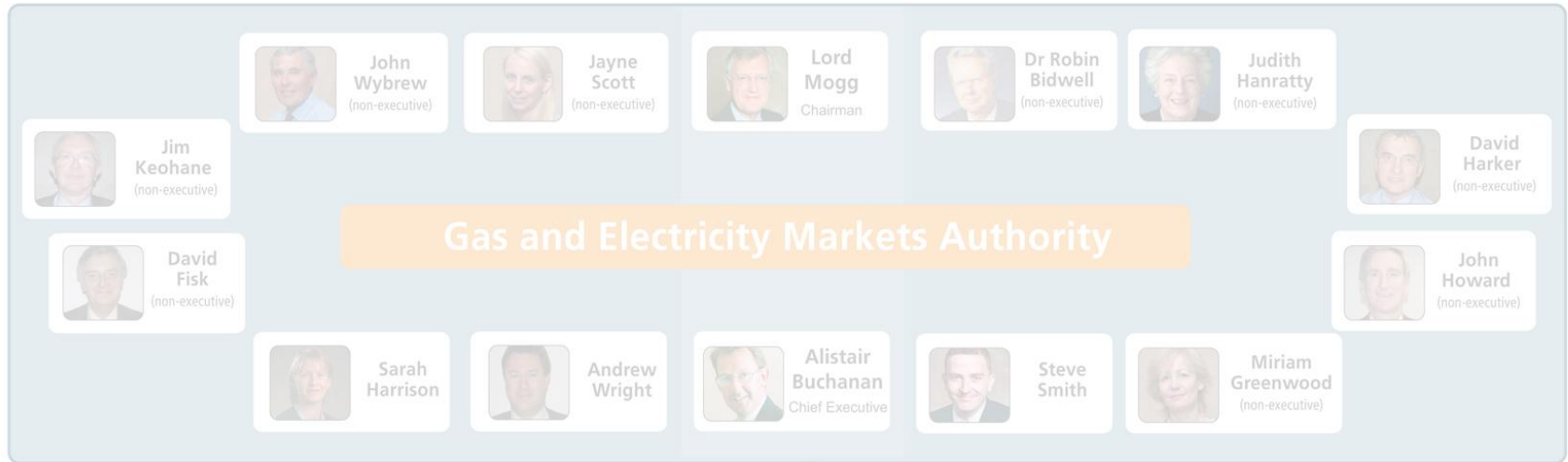
## Key Messages

- your energy regulator - meeting its duties and obligations for today's and tomorrow's consumer
- radical changes - reflect recognition of the importance of sustainability and the low carbon agenda
- building on our current professional and value for money approach
- particular focus on tight risk management and high standards

# New org chart

OCT 2009





*ofgem*

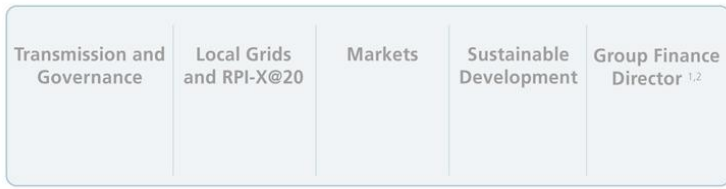
NEW LOOK



Transmission and Governance	Local Grids and RPI-X@20	Markets	Sustainable Development	Group Finance Director
Stuart Cook (Acting SP)	Steve Smith (SP)	Andrew Wright (SP)	Sarah Harrison (SP)	TBA
David Ashbourne (P) LICS – TBA (AP)	Rachel Fletcher (P) Hannah Nixon (P)	Ian Marlee (P) Duncan Sinclair (P) Martin Crouch (P)	Maxine Frerk (P) Irene Hurrell (AP)	
<ul style="list-style-type: none"> <li>• LICS, Governance Review</li> <li>• TAR</li> <li>• TPCR5, TO</li> <li>• SO</li> <li>• LENS etc</li> <li>• Ofgem rep on Offshore Tender Committee</li> <li>• Islands, cables etc</li> <li>• EU grids</li> <li>• RES</li> </ul>	<ul style="list-style-type: none"> <li>• RPI-X@20</li> <li>• DPCR5/DNO's</li> <li>• IDNO/IGT</li> <li>• Connections</li> <li>• Laterals/risers</li> <li>• GDPCR2/GDN's</li> <li>• Regulatory Finance</li> <li>• "Mercury"</li> <li>• M&amp;A Policy</li> <li>• RES</li> </ul>	<ul style="list-style-type: none"> <li>• Discovery.</li> <li>• Domestic: SO, MPLC, qtly reports</li> <li>• Global: LNG, etc</li> <li>• Trading arrangements</li> <li>• Europe</li> <li>• RES</li> <li>• Review research capabilities</li> <li>• Nuclear, CCS and the new generators</li> </ul>	<ul style="list-style-type: none"> <li>• Environmental Policy</li> <li>• Social Policy</li> <li>• Smart Metering policy</li> <li>• Consumer Liaison</li> <li>• Enforcement</li> <li>• Other legal affairs</li> <li>• RES</li> <li>• Better Regulation</li> </ul>	Range of support services offered and provided as necessary.

- = MOVED
- = NEW





# *ofgem* E-Serve



## NEW LOOK

Group Finance			
TBA Group Finance Director			
Environmental Programmes	Operations/HR	Information Management and Technology	Finance and Risk Management
Charles Hargreaves	David Gillies AD Richard Faussett AD Andrew Mann AD	Curt Silver AD	Paul Heseltine AD
<ul style="list-style-type: none"> <li>• All existing environmental programmes delivery</li> <li>• ROC (Renewables certificates)</li> <li>• CERT (energy efficiency)</li> <li>• NFFO (Non fossil fuel obligation)</li> <li>• Climate change levy for renewable and for CHP</li> </ul>	<ul style="list-style-type: none"> <li>• HR</li> <li>• Procurement</li> <li>• Project Management</li> </ul>	<ul style="list-style-type: none"> <li>• All IT</li> <li>• RIC</li> </ul>	<ul style="list-style-type: none"> <li>• Grouping management</li> </ul>

Commercial			
Bob Hull Acting MD			
Offshore	Legal	New Scheme Development	Smart Metering Delivery
Stephanie McGregor AD	TBA Director	Matthew Harnack	TBA
<ul style="list-style-type: none"> <li>• Complete Phase 1</li> <li>• Roll out Phase 2</li> <li>• Strategic Planning for future offshore issues</li> </ul>	<ul style="list-style-type: none"> <li>• Contracts</li> <li>• Codes</li> <li>• Conduct</li> <li>• Advisory</li> </ul>	<ul style="list-style-type: none"> <li>• CCS (Carbon Capture and Storage)</li> <li>• Strategic Development Planning</li> <li>• Commercial Opportunities</li> <li>• Renewable Heat</li> </ul>	



*ofgem*

*ofgem* E-Serve

Promoting choice and value  
for all gas and electricity customers