

# Market Information Provision Initiative

---

**Nolan Robertson**

**Market Information Team Leader**

**nationalgrid**

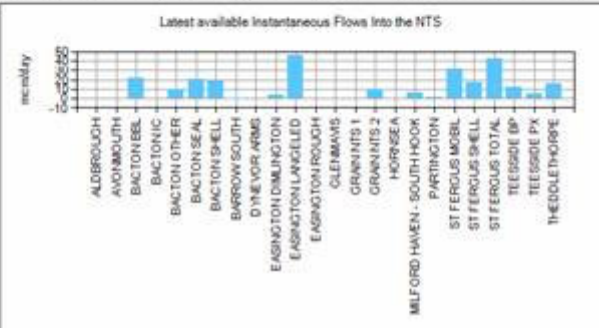
The power of action.™

# Introduction



Flows into the NTS

Zone	System Entry Name	Instantaneous Flows (mcm/day)					
		17:24	17:26	17:28	17:30	17:32	17:34
Supply	ALDBROUGH	0.00	0.00	0.00	0.00	0.00	0.00
	AVONMOUTH	0.00	0.00	0.00	0.00	0.00	0.00
	BACTON BBL	22.28	22.28	22.34	22.34	22.34	22.34
	BACTON IC	0.00	0.00	0.00	0.00	0.00	0.00
	BACTON OTHER	9.50	9.50	9.50	9.63	9.70	9.65
	BACTON SEAL	20.13	20.13	20.13	20.12	20.32	20.32
	BACTON SHELL	18.12	18.12	18.12	18.06	18.07	18.07
	BARROW SOUTH	-0.01	-0.01	-0.01	-0.01	-0.01	-0.01
	DYNEVOR ARMS	0.00	0.00	0.00	0.00	0.00	0.00
	EASINGTON	3.73	3.73	3.73	3.73	3.73	3.73
Entry Zone Grants	EASINGTON	3.73	3.73	3.73	3.73	3.73	3.73
	LANGFELD	46.35	46.35	46.35	46.46	46.40	46.40
	EASINGTON ROUGH	0.00	0.00	0.00	0.00	0.00	0.00
	GLENNAMYS	0.00	0.00	0.00	0.00	0.00	0.00
	GRAIN NTS 1	0.00	0.00	0.00	0.00	0.00	0.00
	GRAIN NTS 2	9.81	9.86	9.82	9.89	9.77	9.77
	HDRNSEA	0.00	0.00	0.00	0.00	0.00	0.00
	MILFORD HAVEN - SOUTH HOOK	0.56	5.74	0.66	0.56	5.80	0.61
	PARTINGTON	0.04	0.04	0.04	0.04	0.03	0.03
	ST FERUS MOBIL	30.82	30.66	31.05	30.99	31.25	31.20
User defined demand	ST FERUS SHELL	17.40	17.40	17.40	17.51	17.44	17.48
	ST FERUS TOTAL	42.78	42.76	42.78	42.66	42.66	42.66
	TEESSIDE BP	12.14	12.00	12.28	12.18	12.25	12.19
	TEESSIDE FX	5.02	5.00	5.01	5.02	5.10	5.10
	THEDDLETHORPE	15.66	15.57	15.48	15.70	15.00	15.61



[Gas Balancing Alerts Supplementary Help](#)

[Operational Info](#)

- Milford Haven – South Hook**  
 03 April 2009  
 Please be advised that the volume of gas offtaken from the National Transmission System as required for the commissioning of South Hook LNG Terminal for Gas day 02 April 2009 was 0.02 mcm. Any ...

ations, Op  
 cess to Operat  
 it uncertainty, f  
 ilitating effici  
 to its operatio  
 ons, relating  
 attention, plea  
 be available du  
 answer phone  
 number 0192  
 1st June 200

h 2009, South Hook LNG have not yet commenced full  
 is relating to physical flows registered on this website should be

Current Gas Day : Tuesday, 07-04-2009 | [Help](#)

02:04ZC

**Alert Status**

	Today	Tomorrow
GBA	NONE	
Trigger (mcm)	434.10	

**Forecast**

	Today	Tomorrow
Demand (mcm)	282	
Seasonal Normal (mcm)	309	306
<b>Supply (mcm)</b>		
Forecast Flow	283	
Physical Flow	283	
<b>Linepack (mcm)</b>		
Opening	347.3	
PCLP	347.7	

[Likelihood to Interrupt Long Term Demand](#)

Forecast Annual Peak Demand: 536 mcm

**ANS Messages**

NONE

**Price**

	SAP	SHP Buy	SHP Sell	7 day Avg
p/KWh	1.0396	1.0683	1.0072	1.0821
p/Therm	30.47	31.31	29.52	31.71

**Actual**

Demand (mcm)	289	
Seasonal Normal (mcm)	310	
CWW Seasonal Normal	8	
<b>Supply (mcm)</b>	<b>05:04:2009</b>	
Beach & LNG Imports	255	
Interconnectors	26	
Storage	0	
<b>EOD Export Physical Flows (mcm)</b>		
Bacton	27	
Moffat	19	
<b>Storage Stock Levels (GWh)</b>		
	05:04:2009	06:04:2009
Short	561	560
Medium	4,803	4,960
Long	11,519	11,749
<b>LNG Stock Level (GWh)</b>		
	05:04:2009	06:04:2009
	2,221	2,436

Operational Data website, please forward them to Network Operations.

- [Operational Data Feedback form](#)

**Subscribe to notification services**

National Grid offer a free subscription service for Gas  
 action.

# Introduction

- ◆ November 2007 - MIPI Phase 1 delivered
  - Prevailing View replaced the Daily Summary report
  - Introduced API's and a data centric approach rather than static reports
  
- ◆ MIPI Phase 2 to be released later this year and will:
  - Transfer remaining data to the strategic MIPI platform
  - Deliver enhancement to API functionality
  - Deliver new or revised data requirements resulting from UNC Review Group 140 (or other UNC mods)
  - Allow enhancements to the design of MIPI Phase 1

***This allows greater flexibility on data items required and increased availability of data, allowing users to use data to meet their requirements.***

## Recent Changes / Updates on MIPI Website

- ◆ **MOD 223** – Day ahead ASEP gas flow nominations published by 18:00 D-1

[http://www.nationalgrid.com/uk/Gas/Data/Operational\\_Summary/](http://www.nationalgrid.com/uk/Gas/Data/Operational_Summary/)

- ◆ **MOD 182** – Published “unknown” Aggregate LNG terminal stocks in the event **any** LNG terminal declines to provide stock holdings.

<http://marketinformation.natgrid.co.uk> Prevailing View

- ◆ **Operational Monthly Updates** - Shows Operational Information for the month. e.g. Gas Demands, Gas Supply build up, UKCS Monitor, Imports and storage

<http://www.nationalgrid.com/uk/Gas/OperationalInfo/monthlyupdates/>

- ◆ **Summer Outlook** – (2009 now published) Highlights a range of issues that the electricity and gas industries may face during the summer months (April to October)

<http://www.nationalgrid.com/uk/Electricity/SYS/sumOutlook/>

**For further information please contact Claire on 01926 65 6474**

**nationalgrid**

The power of action.

## New Sites Commissioned

Type of New Site	Name
LNG Importation Terminal	Grain NTS 2, South Hook LNG
Offtakes	Choakford, Coffinswell
Storage	Aldbrough
Industrials	Centrax
Power Stations	Langage, Marchwood

# Ongoing Projects impacting MIPI

## Gemini 2008 Summer Release

- ◆ NORD07 - <http://marketinformation.natgrid.co.uk/gas/ReportExplorer.aspx>
- Report changed to include multiple ICF ( Interruptible Curtailment Factor ) values with the effective time.
- Total capacity available for the given ASEP after the constraint ( Scaleback / Restoration) has been applied. This column will show the available capacity data previously shown in the CONH report in IE3.

# Project impacts on MIPI

## Enduring Transfer & Trades 2009

NORD07 - <http://marketinformation.natgrid.co.uk/gas/ReportExplorer.aspx>

- ◆ Existing “Long Term Firm Booked” calculation includes values from only selected Long Term auctions.
- ◆ Part of ET&T change, Long Term Firm Booked Capacity calculation will include all Long Term Auctions including RMTNTSEC for Transfer and Trades minus the allocated surrendered capacity.
- ◆ Existing “Long Term Firm Available” includes only the Initial Baseline Capacity. Long Term Firm Available capacity calculation will include values from all the Quantity Holders excluding the new Quantity Holder for surrendered capacity.

All Figures are in kWhs

Full Name	Long Term Firm Available	Long Term Firm Booked	D-1 Daily Firm Available	D-1 Daily Firm Booked	D0 Daily Firm Available	D0 Daily Firm Booked	Daily Interruptible Available	Daily Interruptible Booked	Within Day Buyback Actioned
ALDBROUGH STORAGE ENTRY	140,120,000	0	0	0	0	0	0	0	0
AVONMOUTH LNG ENTRY	179,300,000	2,000,000	177,300,000	0	177,300,000	71,845,776	160,845,776	20,000,000	0
BACTON ZONE	1,783,400,000	447,129,969	1,336,270,041	2,500,000	1,333,770,041	585,320,050	688,602,355	688,602,351	0
BARROW ZONE	309,100,000	170,500,000	138,400,000	0	138,400,000	0	202,979,655	67,000,000	0

**nationalgrid**

The power of action.

## Disaster Recovery Testing – MIPI / Energy Flow Data / S.I.S

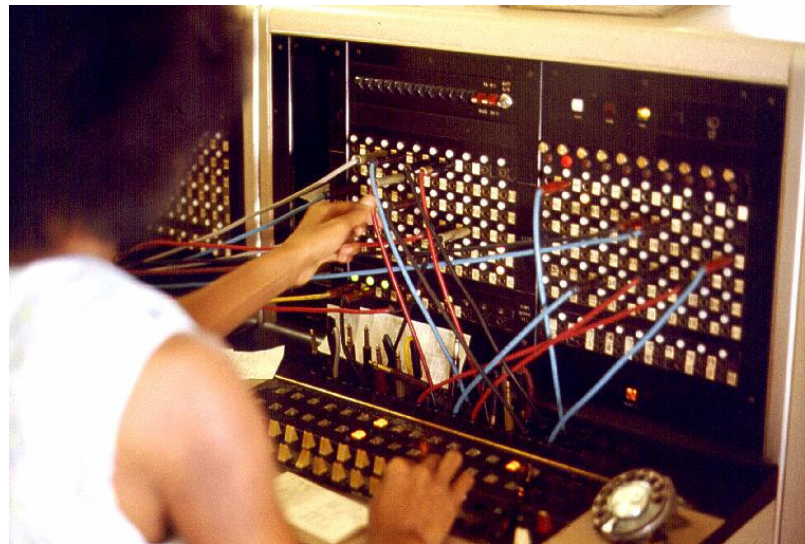
- ◆ Testing planned as part of regular health check
- ◆ Provide assurance on resilience
- ◆ Scheduled for June 2009
- ◆ Scope of test to be defined
- ◆ Internal User Confidence Testing will provide seamless change
- ◆ Website will be updated with news and information

**For further information please contact Claire on 01926 65 6474**



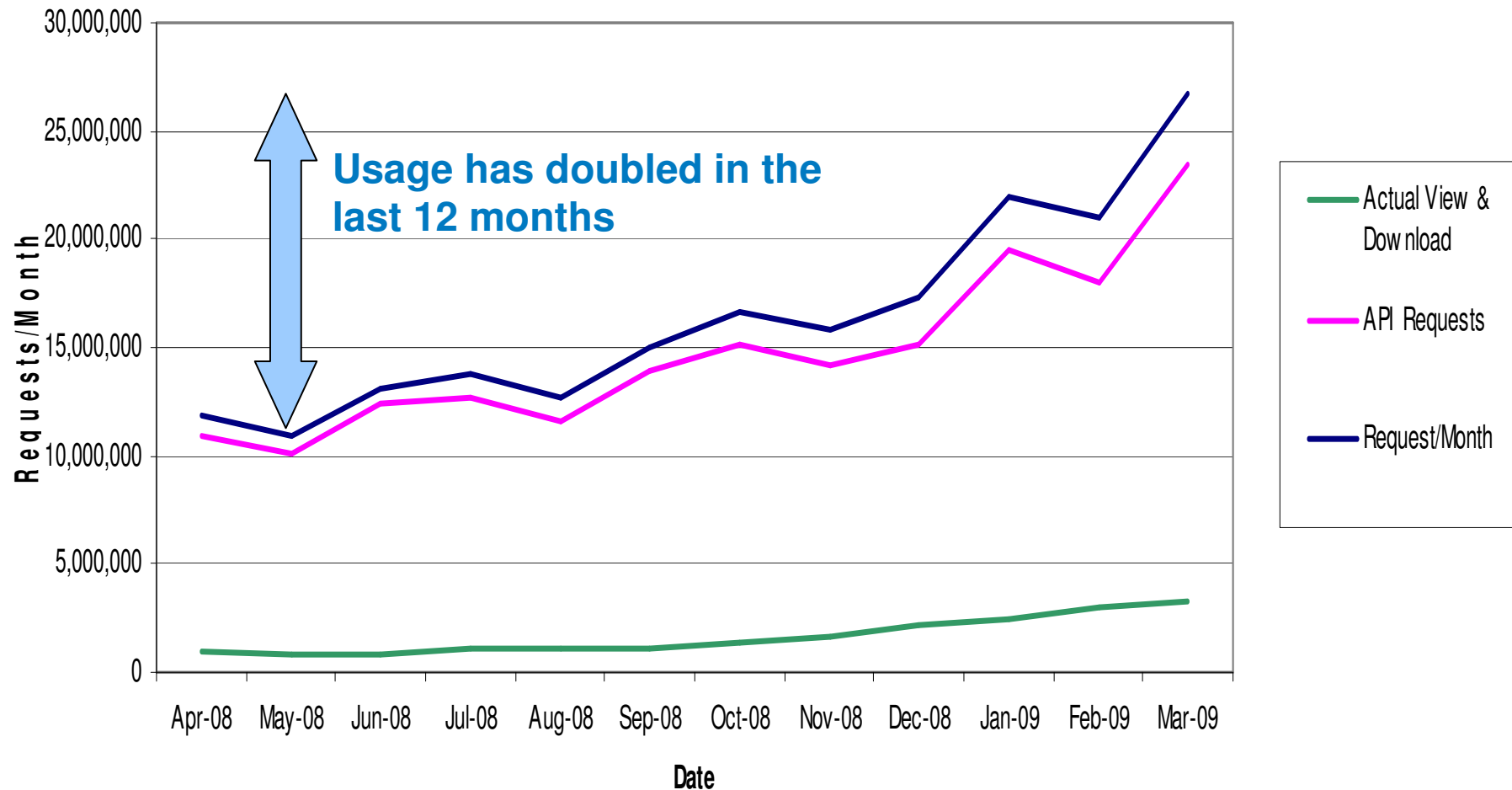
# MIPI Customer helpline

- ◆ Customer Helpline: 01926 65 6474
    - ◆ (09:00 – 16:00, Monday to Friday )
    - ◆ Voicemail Service Out of Hours
  - ◆ Most queries will be answered immediately
    - ◆ 90% within 1 hour
    - ◆ Standard response time < 24hrs
  - ◆ E mail service :
    - ◆ Complex queries <= 10 working days
- [Sysop.centre.reporting@uk.ngrid.com](mailto:Sysop.centre.reporting@uk.ngrid.com)**



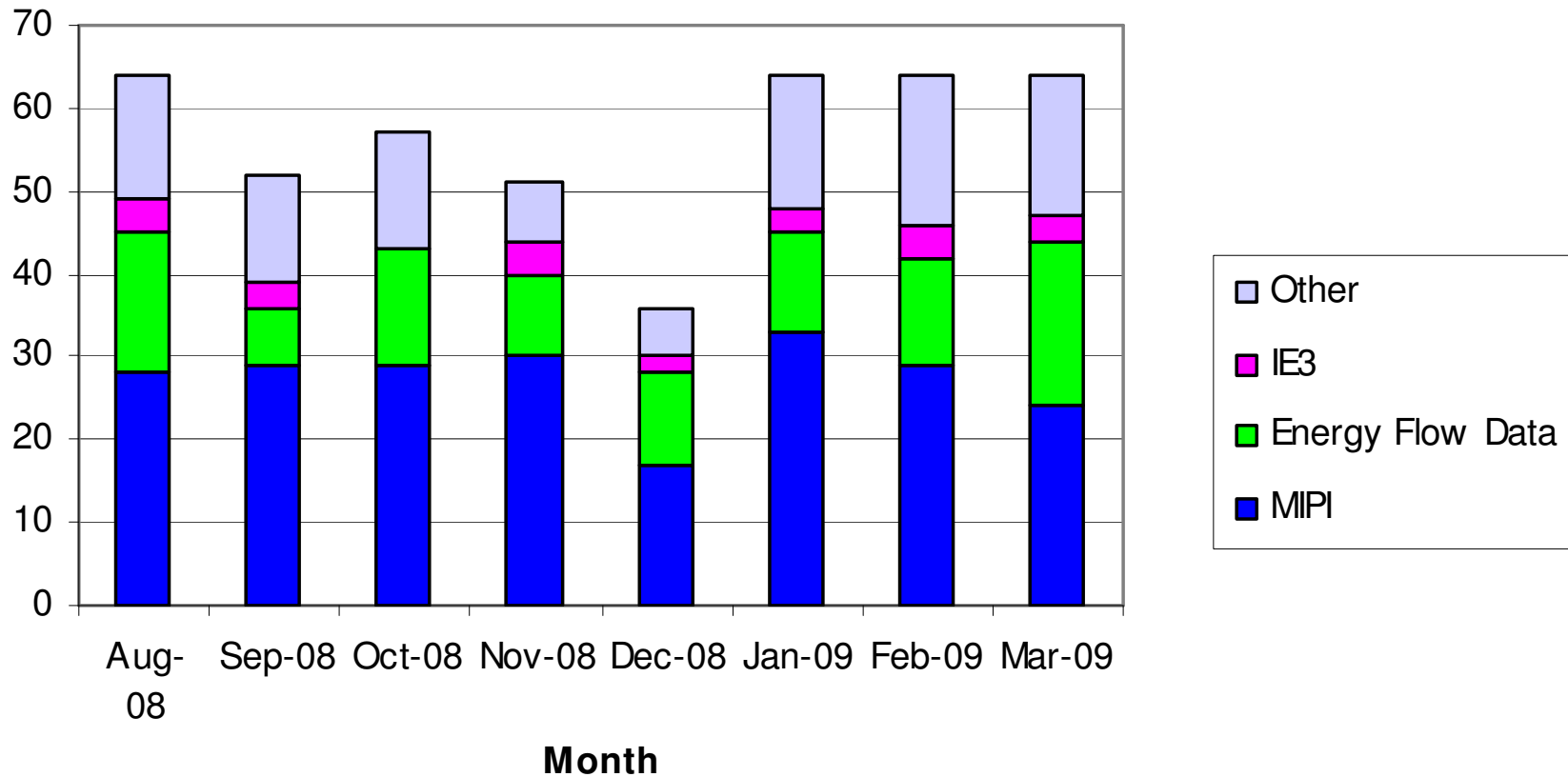
# MIPI Hit Counts

## Hit Count Statistics from Apr-08 to Mar-09

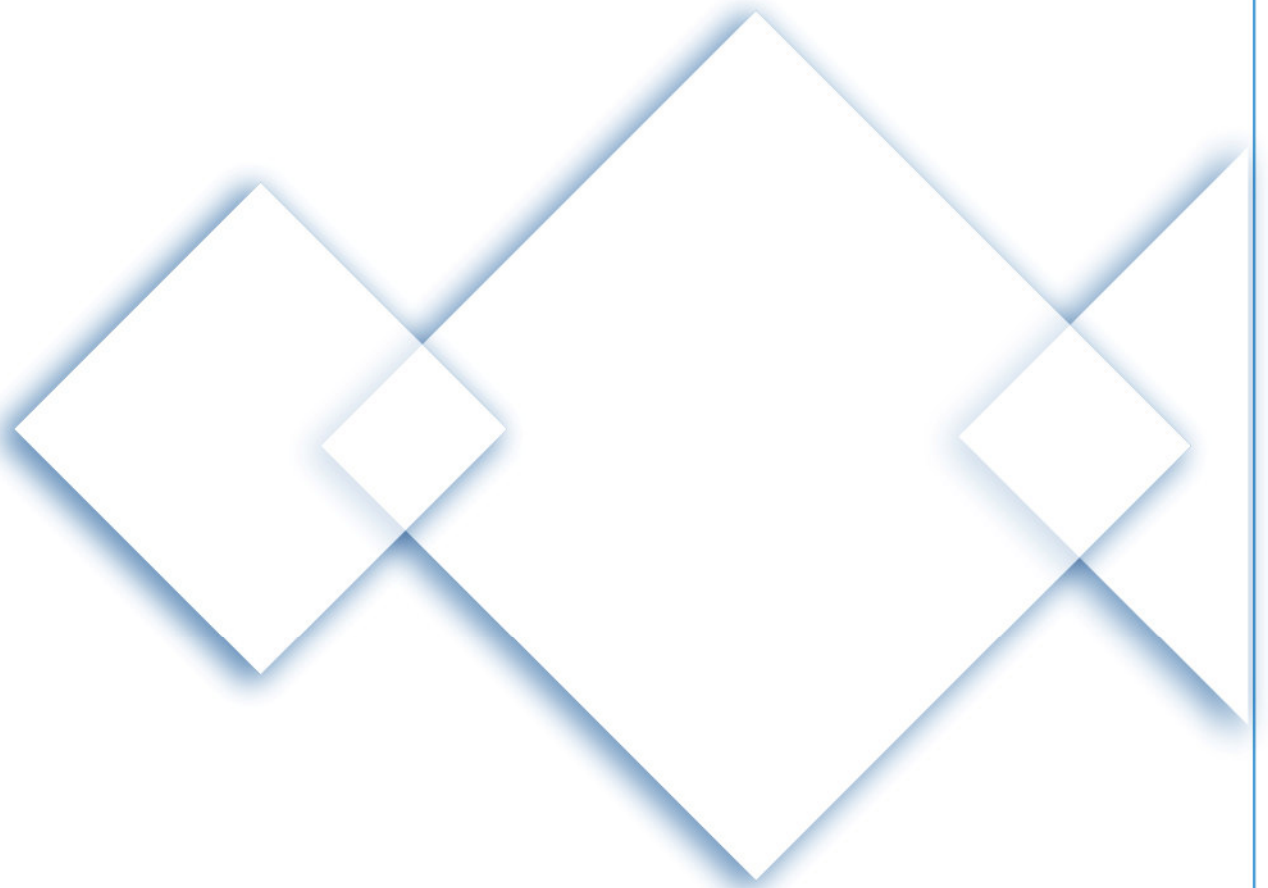


# Information request received by application

## Queries Received on the MIPI Customer Helpline



**August 08 – March 09      Average Resolution Time: 00:55**



## MIPI Phase 2

---

**nationalgrid**

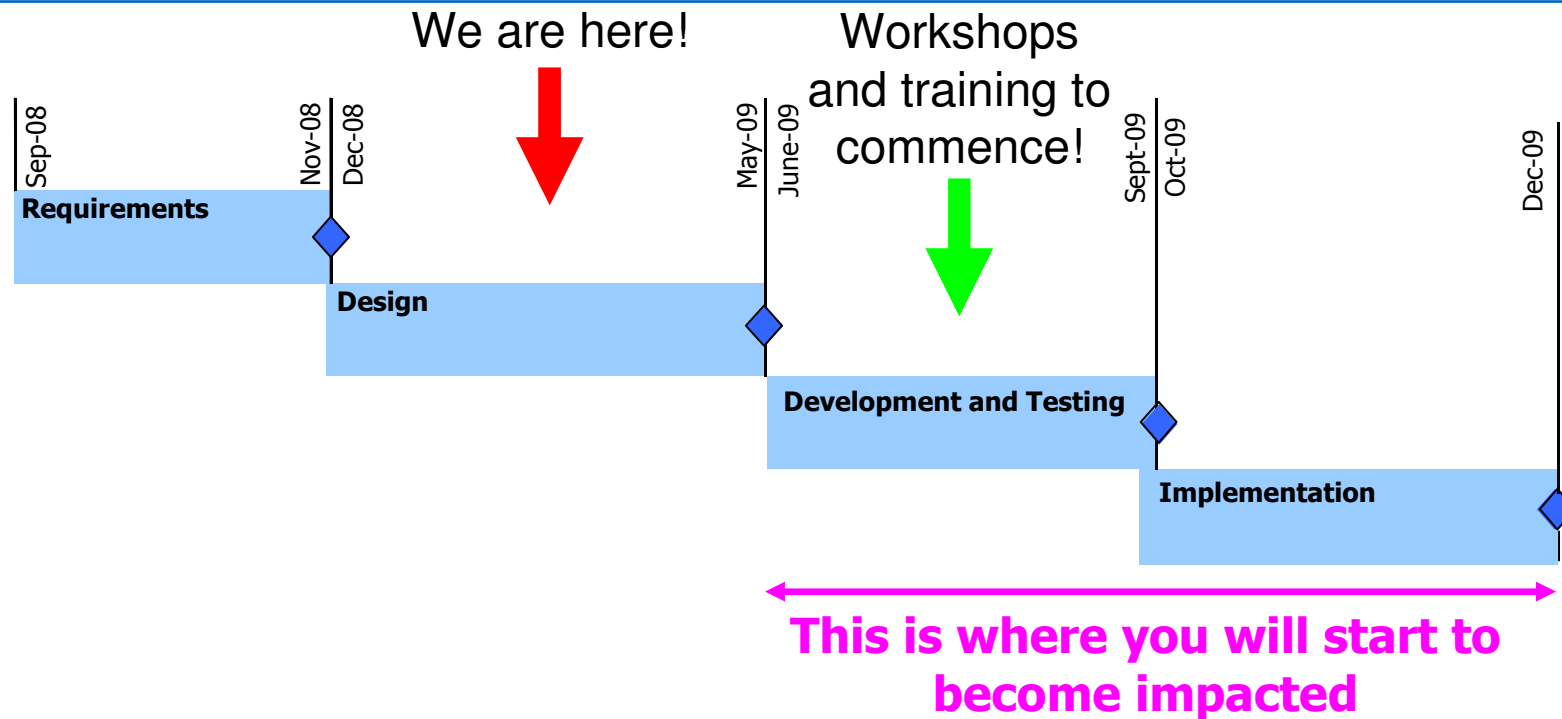
The power of action.™

# MIPI Phase 2

## Key Drivers

- ◆ Operational Stability
- ◆ This project enables National Grid to ensure there is a level playing field which enables ease of entry into the market.
- ◆ Integrate with the European market
- ◆ Robust platform for future changes related to the publication of market information and future regulatory requirements in the UK and Europe.

# Timeline



- ◆ Anticipated “Go Live” date is 1<sup>st</sup> week in November 2009
- ◆ A parallel run will take place for a period of four weeks prior to “Go Live”
- ◆ You will have at least 4 weeks notice of the “Go Live” date and parallel run.

# Impact and Communication

## How does this impact us?

- ◆ A number of static reports will be changed to an “on demand” pick and mix. If you have an API set up this will not change, however, new data items that are being migrated will need to be included in the API call if you want them.
- ◆ New “Push” API introduced, to supplement existing “Pull” API
- ◆ **Great News** – Greater flexibility, instead of waiting for a monthly report in some cases you will be able to select the data you require as and when you want it as data will be available on a daily basis.

# Change in Data

The following reports/information are to be captured as flexible data:-

- Energy – Monthly Reports (e.g. NORM04 - Aggregate Balancing Financial Position)
- Capacity – Daily Reports (e.g. DASW - Daily Auction - Summary Report)
- Capacity – Monthly Reports (e.g. NORM23 - Entry Capacity Trading)
- Entry Capacity auctions (e.g. (LTSEC) Long Term System Entry Capacity)
- Capacity Summary (e.g. Summary of within day Auction bids)
- Storage Information (e.g. NORM12 - Storage Withdrawals & Injection Allocations)
- Operational Summary (e.g. Other Information (Monthly Demand and SND))
- Seasonal and Annual Data (e.g. Historic Actual NTS Demands and SNT)



# Change in Data

Example of a report which will no longer be available in the static format but available on an “on demand” pick and mix.

## Capacity - Monthly Reports

**Operational Data**

- Prevaling View
- DataItem Explorer
- Report Explorer
- Energy - Flow Data
- Energy - Monthly Reports
- Capacity - Daily Reports
- Capacity - Monthly Reports**
- Entry Capacity Auctions
- Exit Capacity
- Capacity Summary

### Capacity - Monthly Reports

**Reports**

- NORM23 - Entry Capacity Trading**  
Entry Capacity is defined in Network Code Section B. This Report gives an overview of the average, peak and lowest daily capacity traded by entry point. This provides a summary picture of the levels ... [View](#)
- NORM26 - Capacity Trading Analysis**  
This Report shows in a graph the amount of days that there were capacity trades for, split by capacity trade type (see Help Text for more detail on the individual types of trade). [View](#)
- Long Term Entry Capacity Summary Report**  
The report gives a tabular indication of Quarterly and Monthly NTS Entry Capacity sold and available in the long term entry capacity auctions at each ASEP (Aggregated System Entry Points) for the ... [Download Excel Spreadsheet](#)
- NORM26 Resource and Quantities Report** [Download Excel Spreadsheet](#)

## NORM23 - Entry Capacity Trading (as is currently displayed)

Date	ZONE_NAME	Traded_Daily_ Avg	Traded_Daily_ Max	Traded_Daily_ Min	Traded_Daily_ Total
Feb-09	AVONMOUTH LNG ENTRY	7,950,603	11,247,656	4,653,550	15,901,206
Feb-09	BACTON ZONE	29,675,717	186,449,423	55,556	8,902,715,097
Feb-09	BURTON POINT EN ZN	6,740,633	6,740,633	6,740,633	13,481,266
Feb-09	DYNEVOR ARMS LNG EN	6,400,000	6,400,000	6,400,000	179,200,000

# Prevailing View

Prevailing View Current Gas Day : Tuesday, 07-04-2009 | Help

02/04/2009

Alert Status	
	Today Tomorrow
GBA	NONE
Trigger (mcm)	434.10

Forecast	
	Today Tomorrow
Demand (mcm)	282
Seasonal Normal (mcm)	309 306
<b>Supply (mcm)</b>	
Forecast Flow	283
Physical Flow	283
<b>Linepack (mcm)</b>	
Opening	347.3
PCLP	347.7

**Linepack (mcm)**

Opening 347.3

PCLP 347.7

**Likelihood to Interrupt Long Term Demand**

Price				
	SAP	SMP Buy	SMP Sell	7 day Avg
p/KWh	1.0396	1.0683	1.0072	1.0821
p/Therm	30.47	31.31	29.52	31.71

Actual	
Demand (mcm)	289
Seasonal Normal (mcm)	310
CWW Seasonal Normal	8
<b>Supply (mcm)</b> 05/04/2009	
Beach & LNG Imports	255
Interconnectors	26
Storage	0
<b>EOD Export Physical Flows (mcm)</b>	
Bacton	27
Moffat	19

Storage Stock Levels (GWh)		
	05/04/2009	06/04/2009
Short	561	560
Medium	4,803	4,960
Long	11,519	11,749

LNG Stock Level (GWh)		
	05/04/2009	06/04/2009
	2,221	2,436

Forecast Annual Peak Demand 536 mcm

**ANS Messages**

NONE

Small graphs buttons

No indication of when data was updated

Map not very interactive

Arrangement of data

<http://www.nationalgrid.com/uk/gas/data/prevailingview/>

**nationalgrid**

The power of action.

# Changes to Prevailing View

**Prevailing View**
Current Gas Day : Friday, 12-09-2008 | Help

→
There are no Notes in the last 5 days.

Alert Status	Today	Tomorrow
GBA	NONE	
Trigger (mcm)	381.30	381.30

Forecast	Today	Tomorrow
Demand (mcm)	203	194
Seasonal Normal (mcm)	264	251

Supply (mcm)	
Forecast Flow	211
Physical Flow	211

Linepack (mcm)	
Opening	326.7
PCLP	335.4

**Likelihood to Interrupt Long Term Demand**

Transporter Interruption :12/09/2008		
LDZ	Probability Of Interruption	
	NSL	Non NSL
Scotland	Low	Low
Northern	Low	Low
NorthWest	Low	Low
NorthEast	Low	Low
EastMidlands	Low	Low
WestMidlands	Low	Low
WalesNorth	Low	Low
WalesSouth	Low	Low
Eastern	Low	Low
North Thames	Low	Low
SouthEast	Low	Low
Southern	Low	Low
SouthWest	Low	Low

	NTS	Specific
	NTS South West	Low
	NTS South East	Low
	NTS Southern	Low
	NTS Other	Low

**Forecast Demand For Today** Back to Default

Forecast Annual Peak Demand 541 mcm

**ANS Messages**

NONE

Price	SAP	SMP Buy	SMP Sell	7 day Avg
p/KWh	2.3161	2.3448	2.2837	2.5156
p/Therm	67.88	68.72	66.93	73.72

Actual	
Demand (mcm)	207
Seasonal Normal (mcm)	267
CWW Seasonal Normal	15

Supply (mcm)	10/09/2008
Beach & LNG Imports	194
Interconnectors	12
Storage	0

EOD Export Physical Flows (mcm)	
Bacton	11
Moffat	17

Storage Stock Levels (GWh)	10/09/2008	11/09/2008
Short	2,064	2,064
Medium	7,128	7,265
Long	35,127	35,167

LNG Stock Level (GWh)	10/09/2008	11/09/2008
	642	636

Modify notes display functionality

Display relevant dates and times on screen rather than through hover functionality

Enhance access to drop down menus

Enhance access to secondary maps

Enhance display of ANS messages

Enhance Graph icons

The power of action.

19

# Revised Prevailing View (under development)

Previous
Grid.
Next

Alert Status		
	Today 07/04/2009	Tomorrow 08/04/2009
GBA	NONE	NONE
Trigger (mcm)	434.1	434.1

Forecast		
⌘ Demand(mcm)	281.9 (13:04)	283.8 (13:04)
⌘ Seasonal Normal	308.6	305.7

Supply (mcm)	
⌘ Forecast Flow	282.9 (13:00)
⌘ Physical Flow	286.2 (13:00)

Linepack (mcm)	
⌘ PCLP	348.3 (13:04)

Likelihood to Interrupt  
Long Term Demand  
Real Time Flow

Forecast Map		Actual Map	
Demand	Supply	Demand	Supply

Forecast Annual Peak Demand 536 mcm

Actual				
<b>Demand(mcm)</b>	Graph	06/04/2009		
⌘ Actual Demand		289		
⌘ Seasonal Normal		310		
⌘ CWV Seasonal Normal		8		
⌘ Actual CWV Demand		8		
<b>Supply (mcm)</b>	Graph	01/04/2009		
⌘ Beach & LNG Imports		237		
⌘ Interconnector		27		
⌘ Storage		10		
<b>Linepack (mcm)</b>	Graph	07/04/2009		
⌘ Opening		347.3		
<b>EOD Export Physical Flows (mcm)</b>	Graph	06/04/2009		
⌘ Bacton		27		
⌘ Moffat		19		
<b>Storage Stock Levels (GWh)</b>	Graph			
	05/04/2009	06/04/2009		
⌘ Short	561	560		
⌘ Medium	4,803	4,960		
⌘ Long	11,519	11,749		
<b>LNG Importation Facility Stock Level (GWh)</b>				
	05/04/2009	06/04/2009		
	2,221	2,436		
<b>Price</b>	Graph	06/04/2009		
	SAP	SMP Buy	SMP Sell	7 day Avg
p/kWh	1.0396	1.0683	1.0072	1.0821
p/Therm	30.47	31.31	29.52	31.71

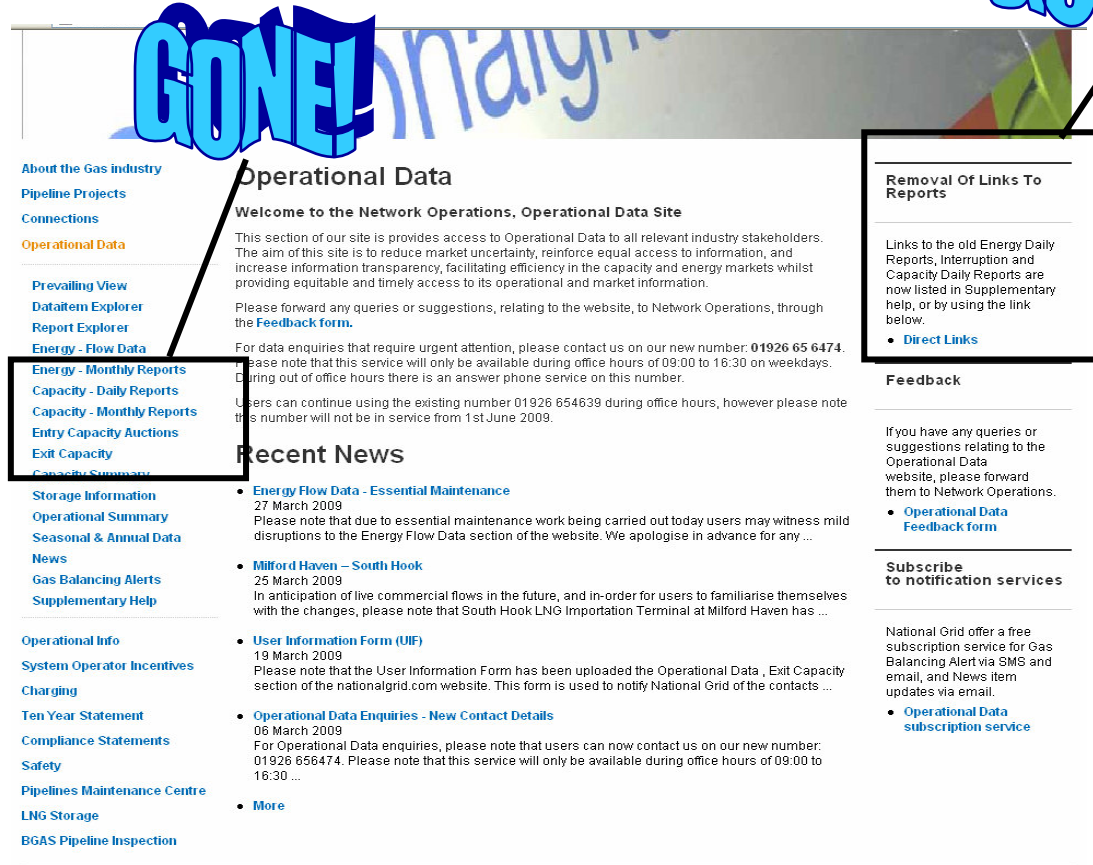
  


















ANS Messages	
10:00	This was for testing ANS messages display, if any message reaches the maximum length, it has to go to the next line.
11:00	Updating the look and feel for the page
12:00	Test ANS Message 1
13:00	Test ANS Message 2
14:00	Test ANS Message 3
15:00	PLEASE SEE PCLP FOR 08:00 HRS DEMAND 261.2 OLP 297.4 PCLP1 309.8 PCLP2 301.8

# MIPI Phase 2

## Data to be transferred to MIPI

**GONE!**



- **Operational Data**
-  **Prevailing View**
-  **Dataitem Explorer**
-  **Report Explorer**
-  **Energy - Flow Data**
-  **Energy - Monthly Reports**
-  **Capacity - Daily Reports**
-  **Capacity - Monthly Reports**
-  **Entry Capacity Auctions**
-  **Capacity Summary**
-  **Exit Capacity**
-  **Capacity Summary**
-  **Storage Information**
-  **Operational Summary**
-  **Seasonal & Annual Data**
-  **News**
-  **Gas Balancing Alerts**
-  **Supplementary Help**

**Removal Of Links To Reports**

Links to the old Energy Daily Reports, Interruption and Capacity Daily Reports are now listed in Supplementary help, or by using the link below.

- [Direct Links](#)

**Feedback**

If you have any queries or suggestions relating to the Operational Data website, please forward them to Network Operations.

- [Operational Data Feedback form](#)

**Subscribe to notification services**

National Grid offer a free subscription service for Gas Balancing Alert via SMS and email, and News item updates via email.

- [Operational Data subscription service](#)

 **Currently hosted by strategic MIPI Platform**

 **To be hosted by strategic MIPI Platform post MIPI Phase 2**

 **No change. Items not impacted by MIPI**

**IMPORTANT.** Start using the new DSR! (or Prevailing View) If you use the old IE3 version then this will disappear after MIPI Phase 2 "Go live".

# MIPI Phase 2 Queries

## Any Questions?

### Contacts

Lawrence King, Business Project Manager

Sharon Fellows, Business Lead

Helpline 01926 65 6474

Manned 09:00 - 16:00, Monday to Friday

We will aim to answer queries within 24hrs (weekdays only)

Or E-mail:- [Sysop.centre.reporting@uk.ngrid.com](mailto:Sysop.centre.reporting@uk.ngrid.com)

**Users can nominate lead users in their organisations who will receive regular updates and be invited to the forthcoming workshops.**