

# Summer Outlook 2008

---

Alan Smart  
Network Operations

30th April 2008

**nationalgrid**

# Agenda

---

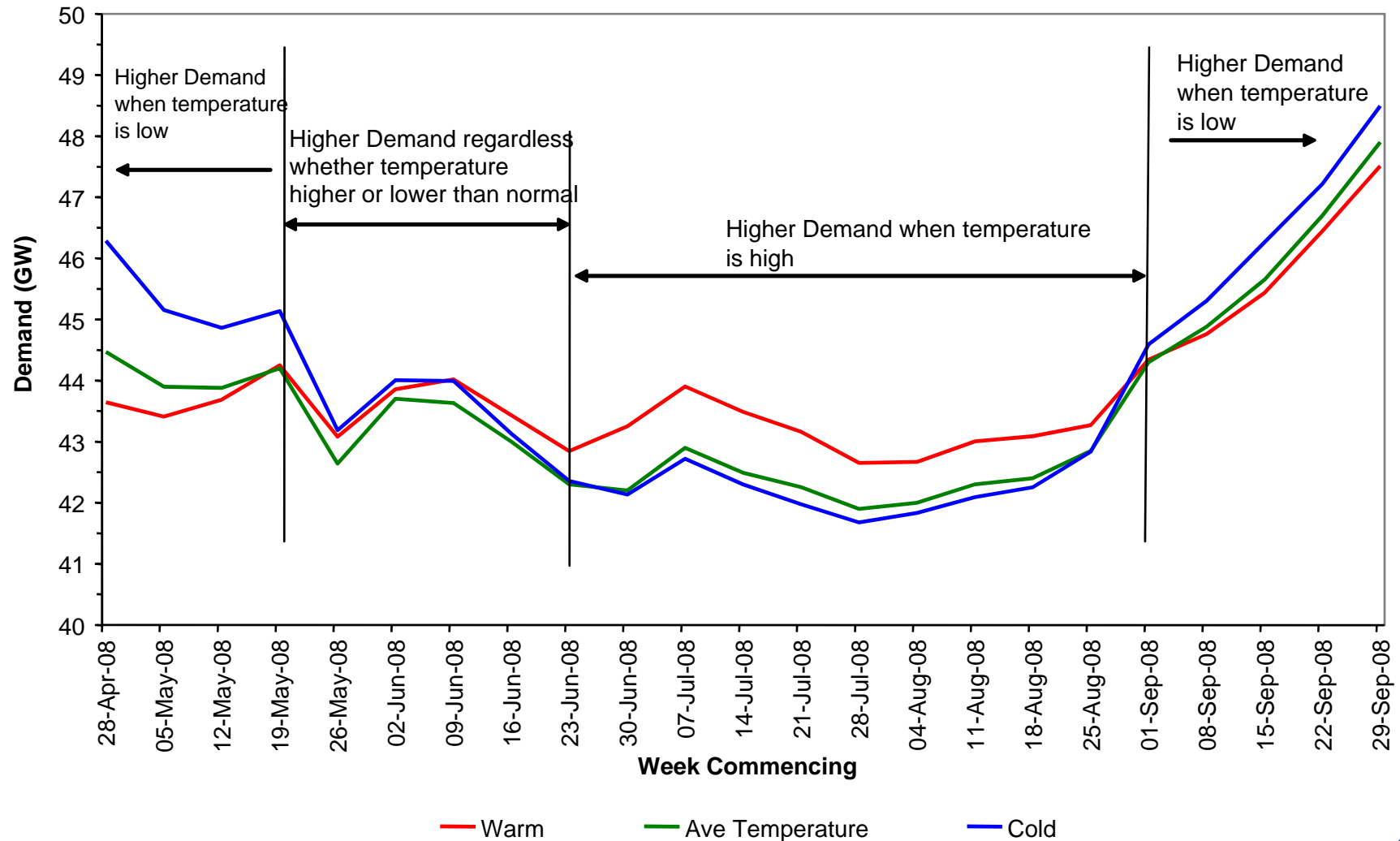
- **Electricity Demand & Supply**
- **Scottish Export Issues**
- **Gas Demand & Supply**
- **Increased Transparency**
- **Summary**

# Agenda

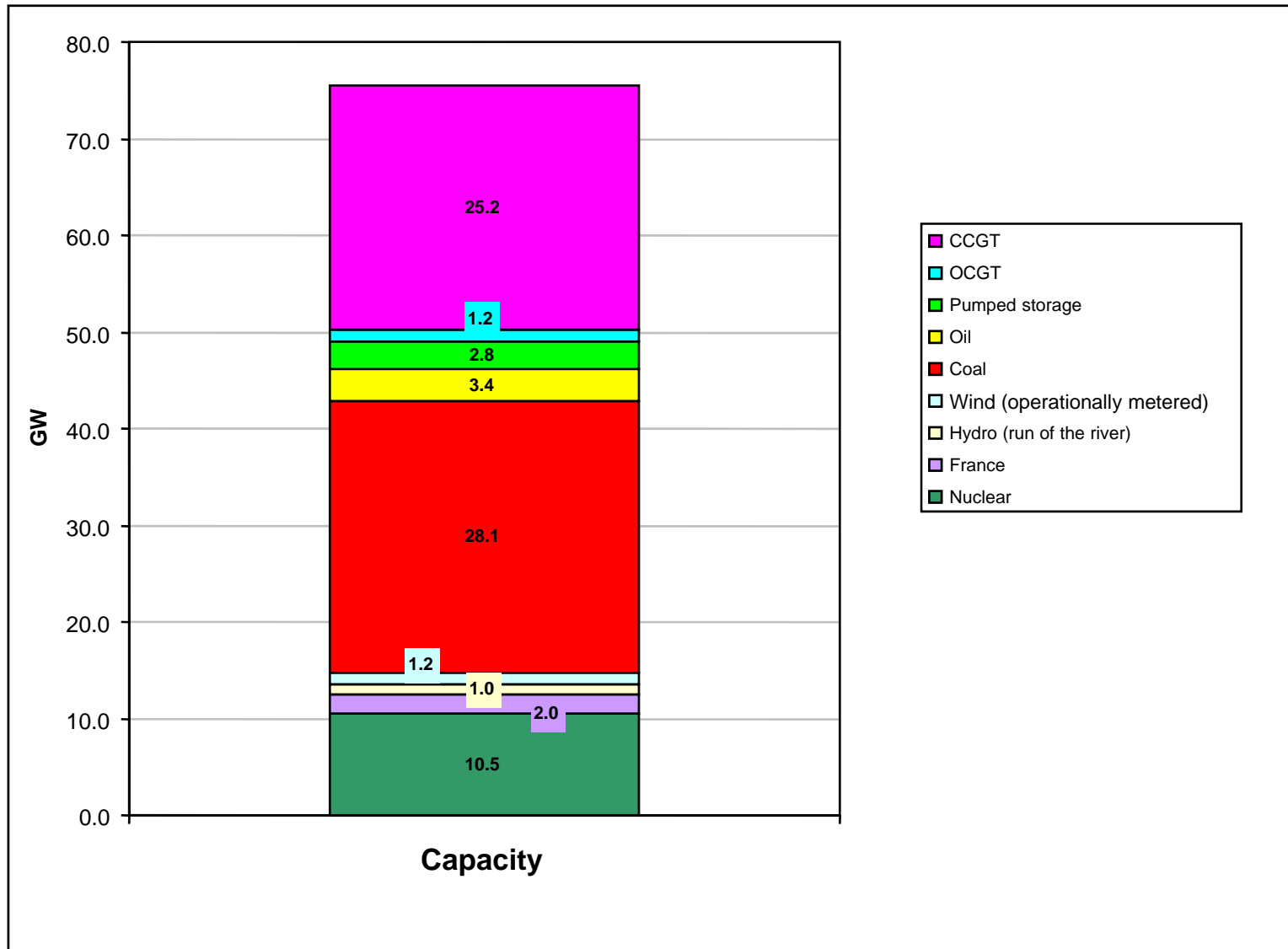
---

- **Electricity Demand & Supply**
- Scottish Export Issues
- Gas Demand & Supply
- Increased Transparency
- Summary

# Forecast Electricity Demand for Varying Temperatures

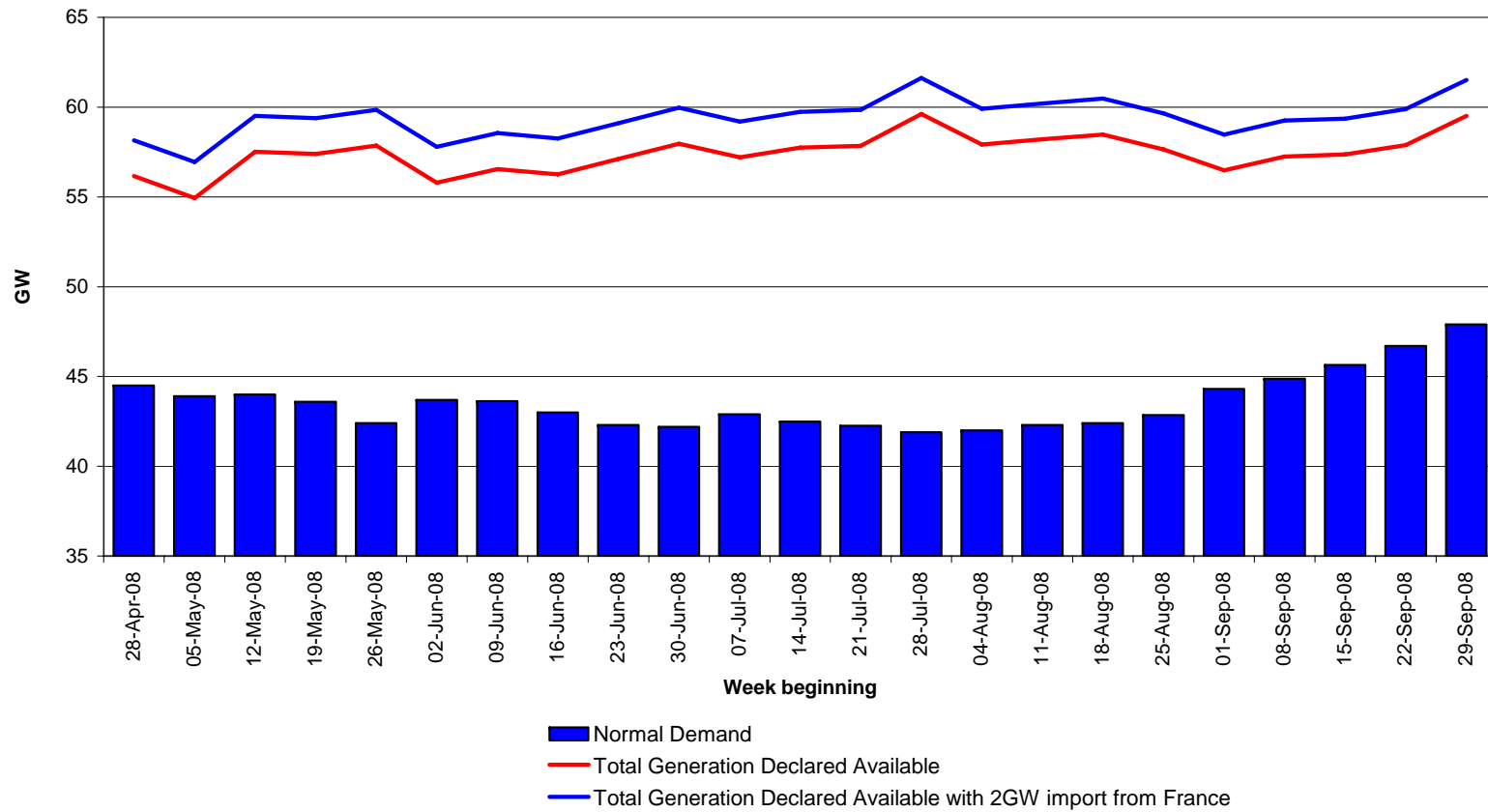


# Generation Capacity Available – Summer 2008

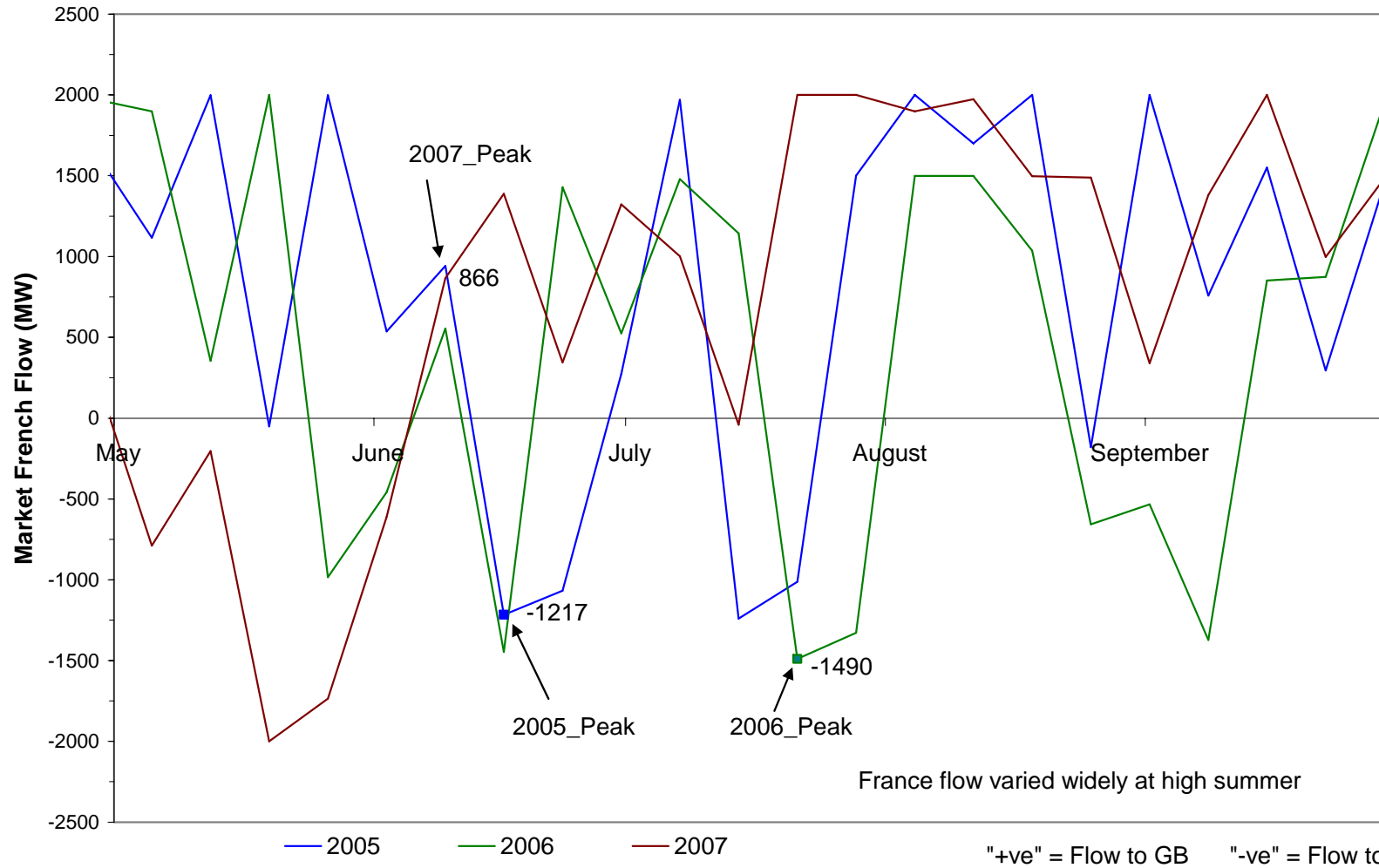


# Declared Generation Availability

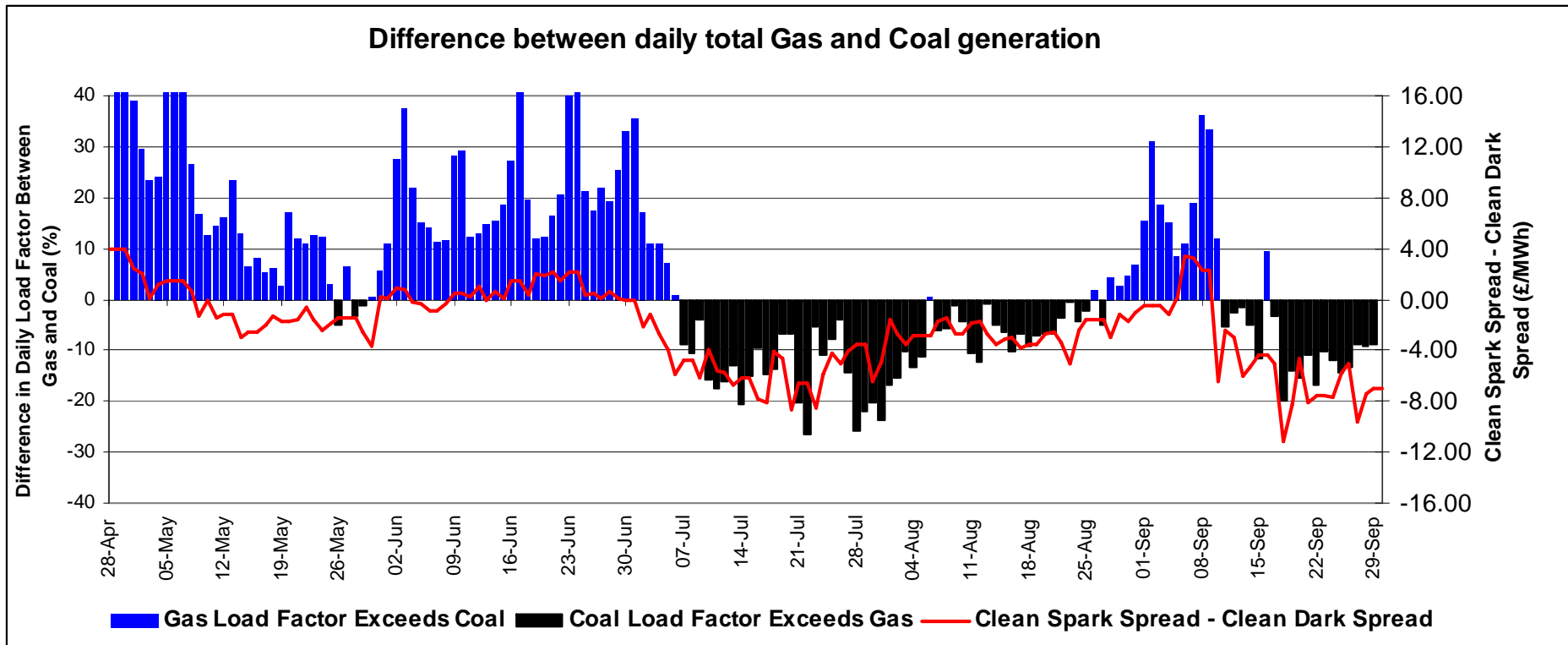
Declared Availability and Forecast Normal Demand



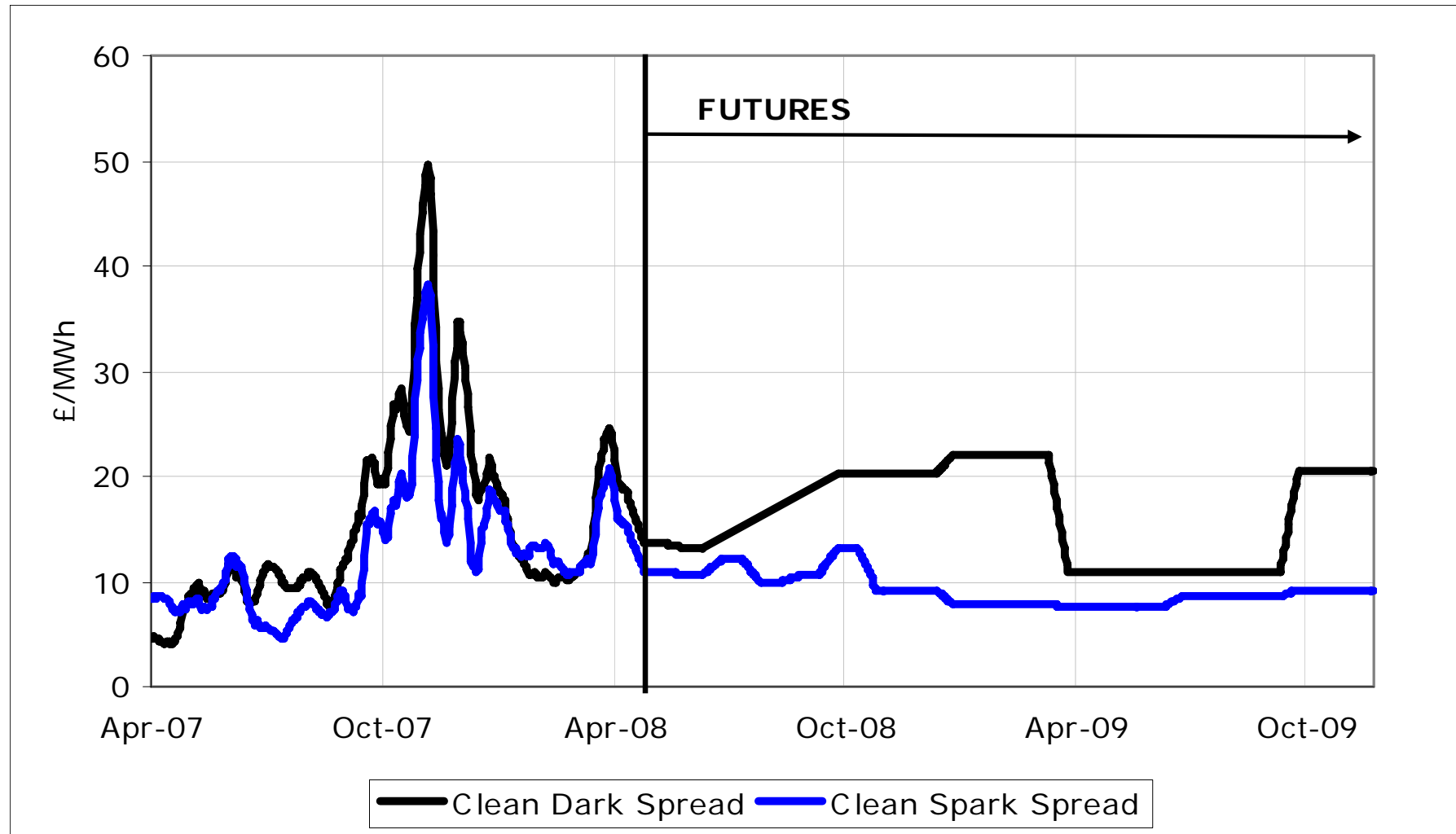
# GB-France Flows At Time Of Weekly Peak



# Summer 2007 – coal and gas-fired generation load factors



# Comparison of clean spark spread v dark spread



# Agenda

---

- Electricity Demand & Supply
- **Scottish Export Issues**
- Gas Demand & Supply
- Increased Transparency
- Summary

# Scottish Export Constraints

---

- ◆ Just started 3 years work to rebuild parts of the system in Scotland and Northern England to connect new renewable generation. This requires major outages across Cheviot boundary
- ◆ Will constrain the capacity of the boundary circuits from 2.2GW to 0.6 – 1.4GW

# Scottish Export Constraints

---

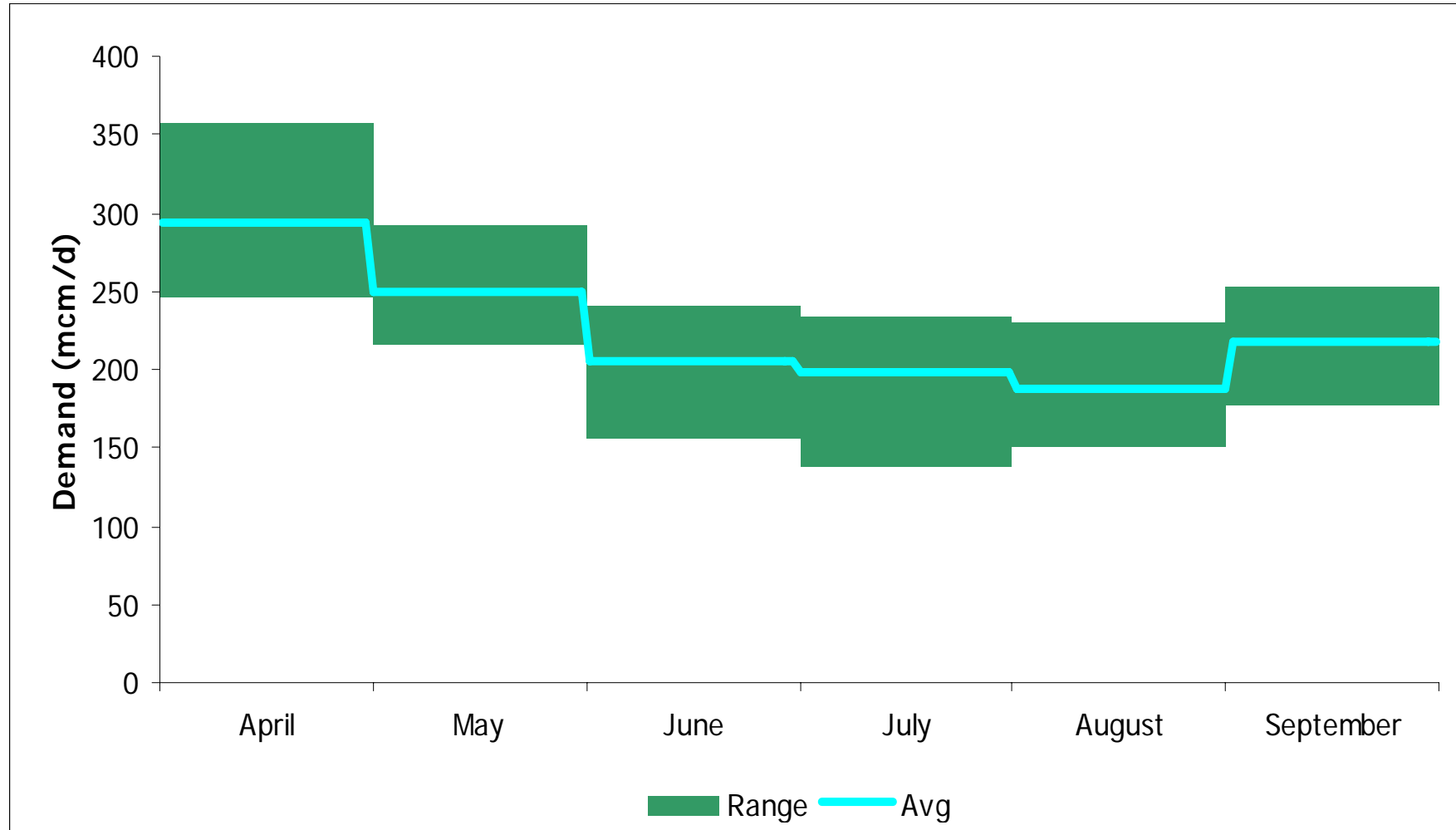
- ◆ National Grid will manage these constraints through:
  - ◆ Contracts to limit generation output
  - ◆ Intertrips
  - ◆ Actions in the BM on the day
  - ◆ Trades and PGBTs
- ◆ Up to 1.0GW of generation in Scotland may be unavailable to National Grid

# Agenda

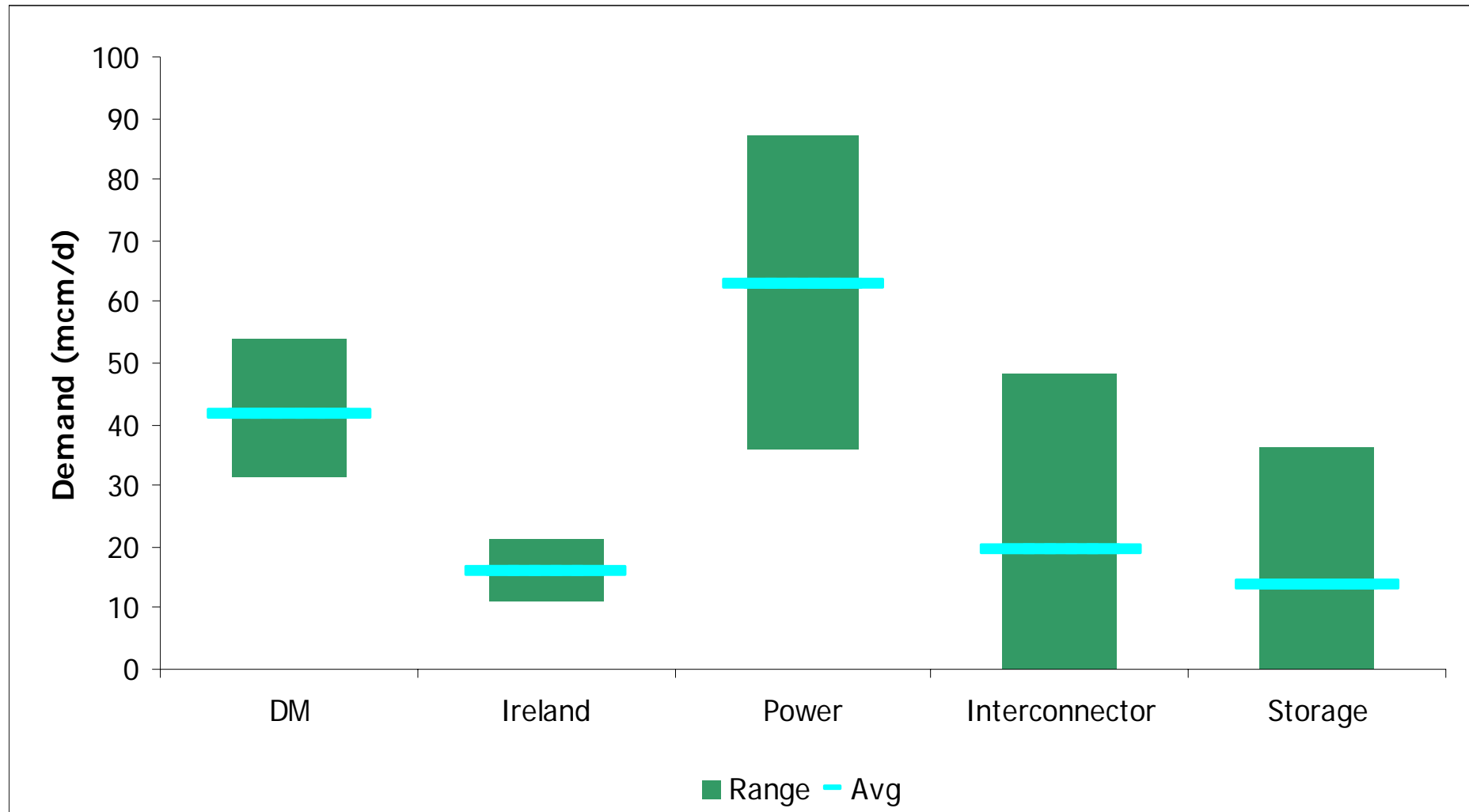
---

- Electricity Demand & Supply
- Scottish Export Issues
- **Gas Demand & Supply**
- Increased Transparency
- Summary

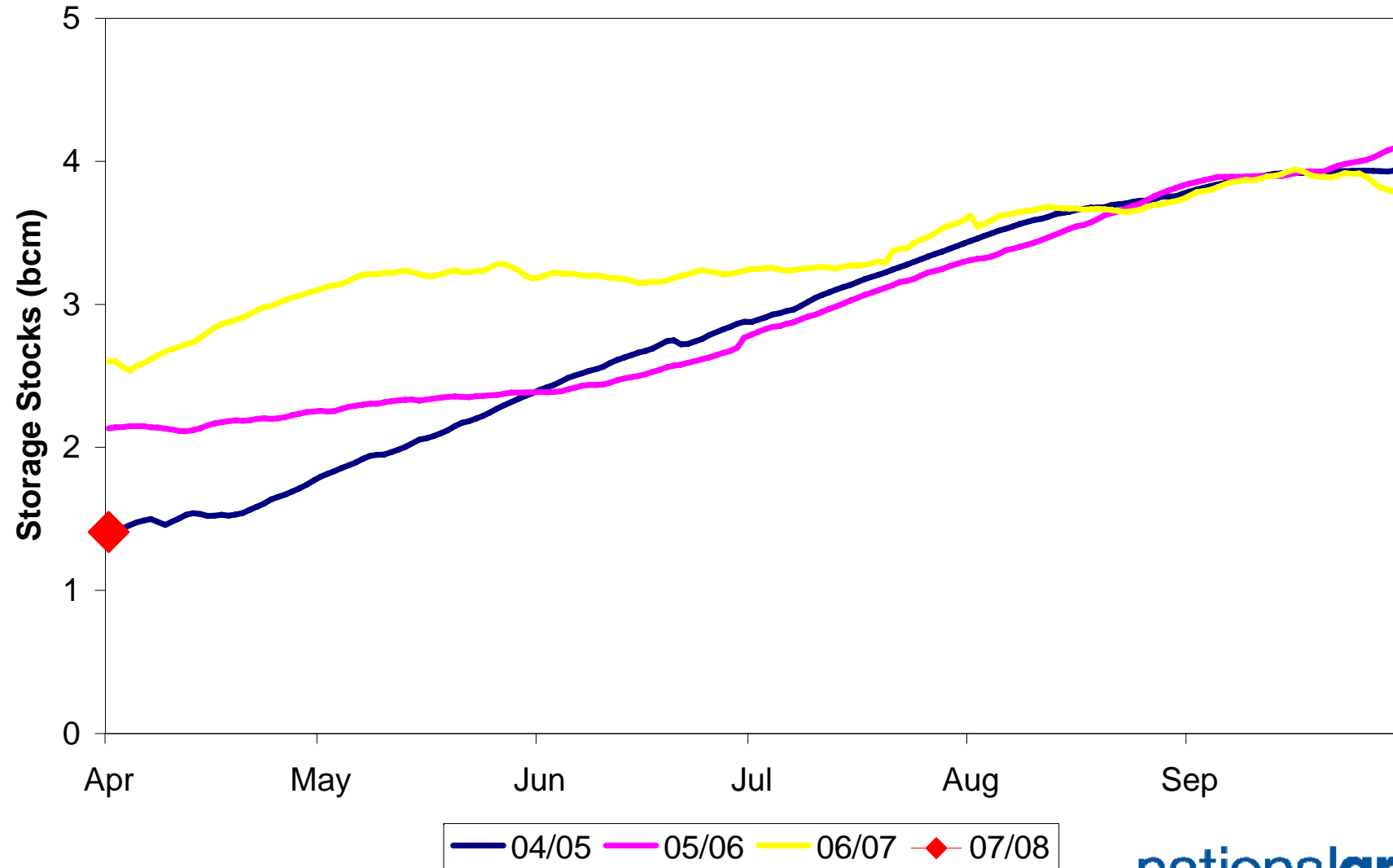
# Total Summer Demands (2005 – 2007)



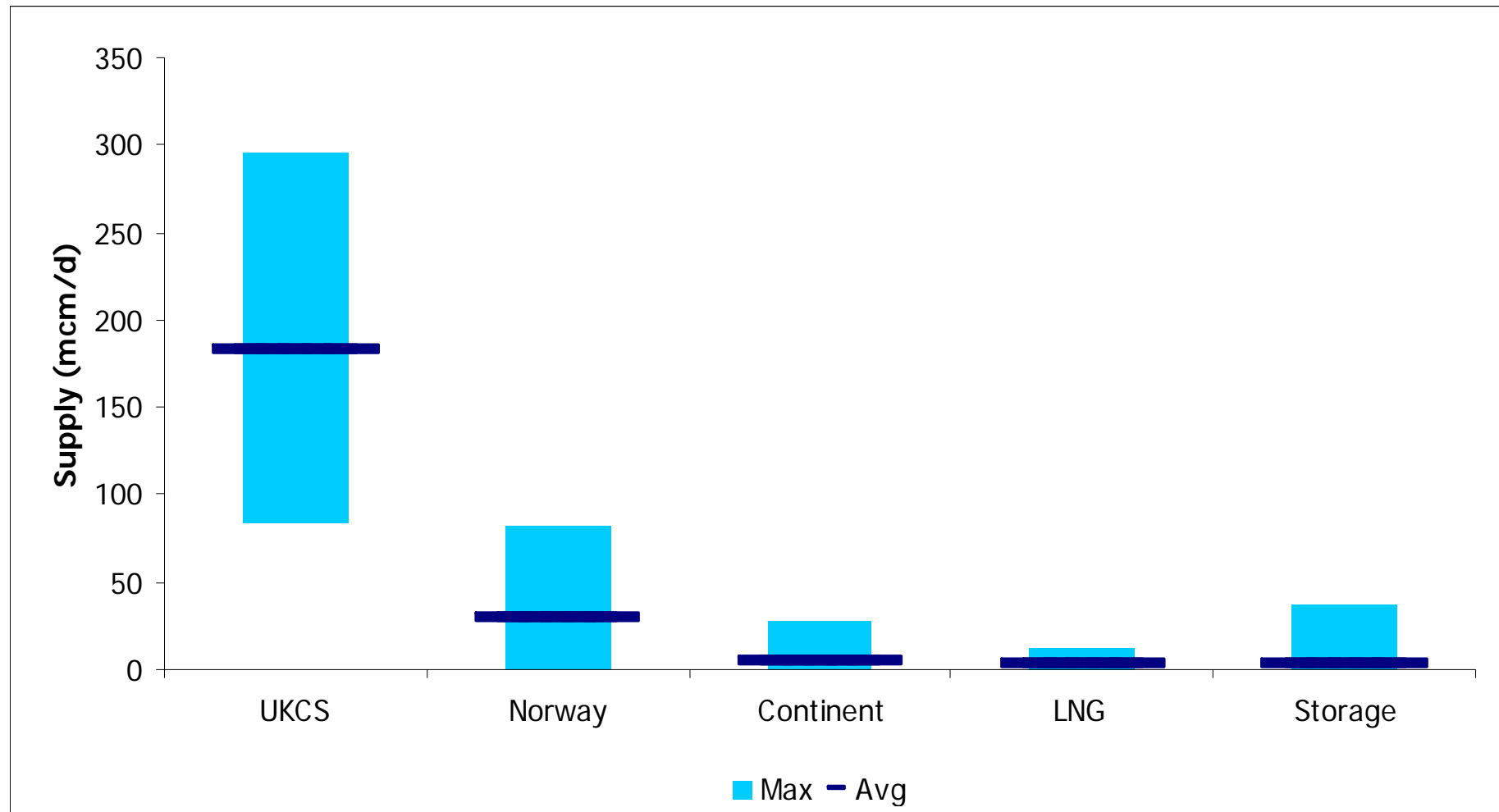
# Range of DM, Export & Power Generation Summer Demands



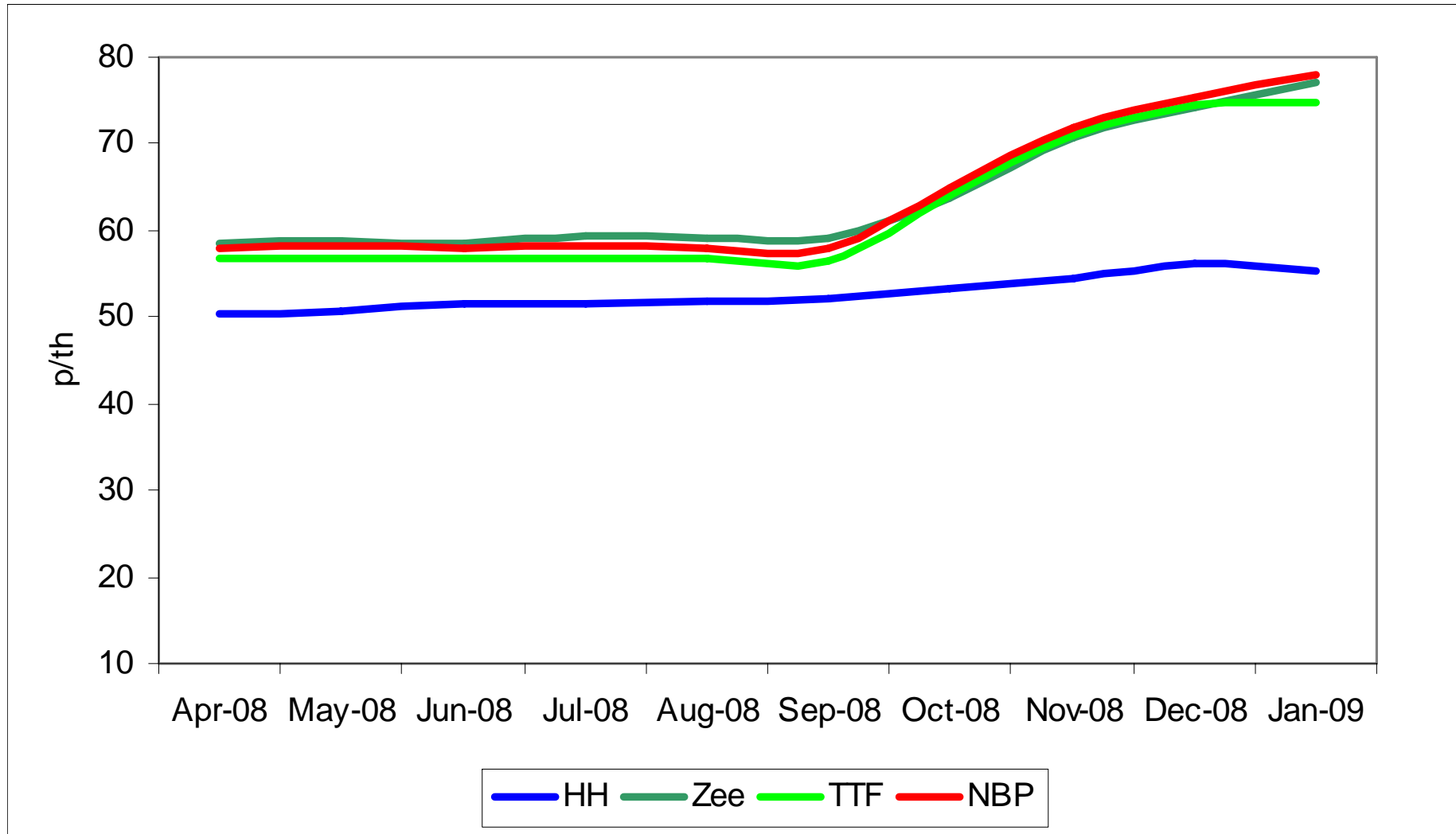
# Aggregated Storage Stocks 2005 - 2007



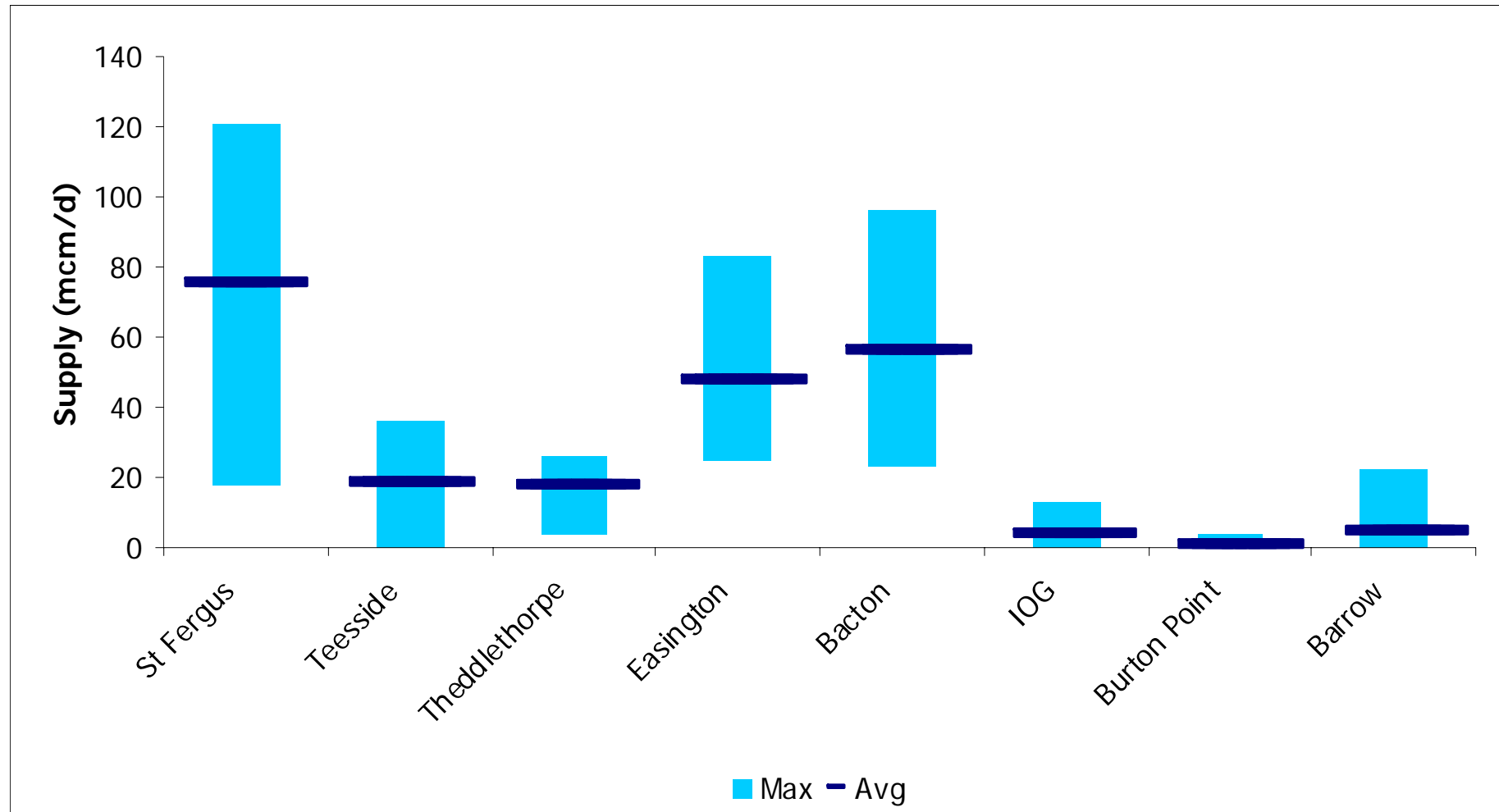
# Range of Supply Sources (2005 – 2007)



# Forward Gas Prices 2008



# 2008 Forecast of Summer Supplies by Terminal



# Agenda

---

- Electricity Demand & Supply
- Scottish Export Issues
- Gas Demand & Supply
- **Increased Transparency**
- Summary

# Electricity - Information Transparency

Electricity Data Summary - Microsoft Internet Explorer

Address: http://www.bnreports.com/dsr.htm

**neta** | neta Home | BM Reporting | Help | Site Map | **ELEXON**

**Electricity Data Summary**

Welcome to the Electricity Data Summary Page

This summary page has been produced to provide centralised access to key electricity data. ELEXON welcomes any suggestions on other data items that users would find it useful to be able to access from this page – please contact the [ELEXON help desk](#).

**System Information**

The [systems warning page](#) gives details of any system warnings issued by National Grid e.g. Notice of Insufficient Margin (NISM), High Risk of Demand Reduction (HRDR) or Demand Control Imminent (DCI).

[Real Time Frequency Data](#) is available for the last sixty minutes.

Weather and temperature data are not currently published on the BMRS or National Grid website, but are available from the [Met Office](#).

**Market Information**

Select IMBALNGC from the [Day and Day Ahead Margin](#) page to display the forecast imbalance position.

The [system prices](#) page displays indicative System Buy Price (SBP) and System Sell Price (SSP) values for today and yesterday.

This graph shows system frequency for the last sixty minutes. Please note that the graph refreshes itself every few seconds, but may need manually refreshing if left open for a prolonged period.

This graph and data kindly provided courtesy of National Grid.

Microsoft PowerPoint - [Market Info 3 Oct 07 [Read Only]]

Electricity Daily Summary Page | Wednesday 27th June 2007 10:04

**System Warnings**

Today	Tomorrow
Wednesday 27 June 2007	Thursday 28 June 2007
None	None

Definitions | [Click here for system warning history](#)

**Peak Demands Yesterday / Today Tomorrow**

Date	Forecast Demand Peak	Actual Demand Peak
Tue 26 June 2007		42960 MW
Wed 27 June 2007	43550 MW	
Thu 28 June 2007	43300 MW	
Fri 29 June 2007	42800 MW	

Definitions | [Click here for historic and forecast demand data](#)

**Triad Demand Information**

Winter Triad Demand Period	GB Demand MW
1 November to 30 February	
3 highest demands so far for this winter triad period	
16-Nov-07	57630
02-Dec-07	58240
04-Jan-08	57420
...	
3 highest forecast demands for rest of this winter triad period	
...	
18-Jan-08	58480
...	

# Summary

---

- ◆ **Should be adequate supply to meet demand for both electricity and gas demand**
- ◆ **Can't afford to be complacent – could still be affected by supply shocks or unexpected demands**
- ◆ **New transparency initiatives to provide more market information**