



Approach to assessment

Matt Buffey - 02/12/04

Past assessment

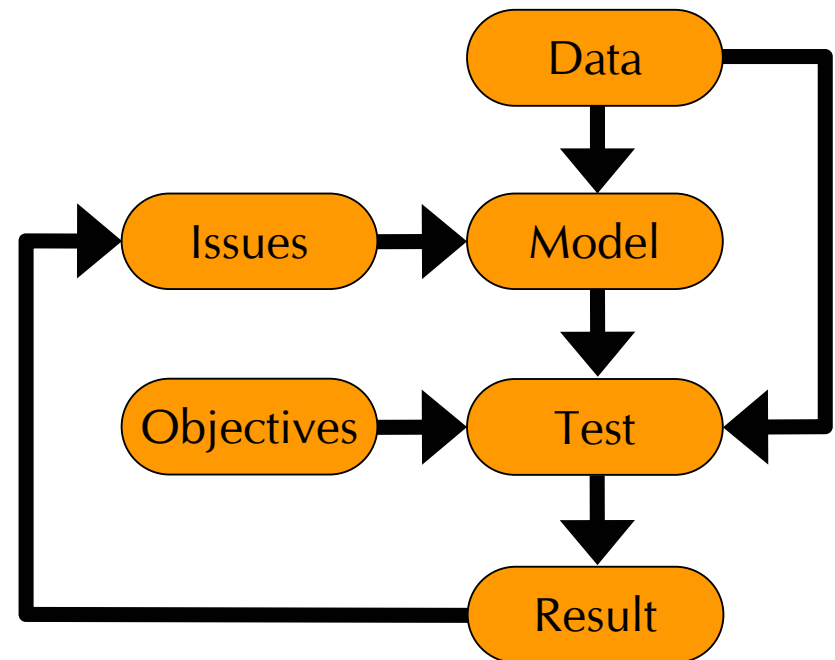
- In the past, amendments to the cash out arrangements made through industry code processes
- Effective tool for discrete issues
 - Established framework
 - Focussed
 - Industry led
- Cash out
 - Cross industry; cross governance
 - No clear defect identified
 - Difficult to assess solutions

Proposed assessment

- Flexible framework
 - Includes gas and electricity and the interactions between the two
 - Cross governance: all codes
 - Incentives on both parties and System Operators
- Industry led with Ofgem input
 - Ofgem has own views on what the Group should consider, how it should operate (subgroups, etc), and the timescales involved
 - However, this is open to the Group
- Quantitative and qualitative
 - Assessment led by quantitative / objective analysis supported by qualitative / subjective analysis

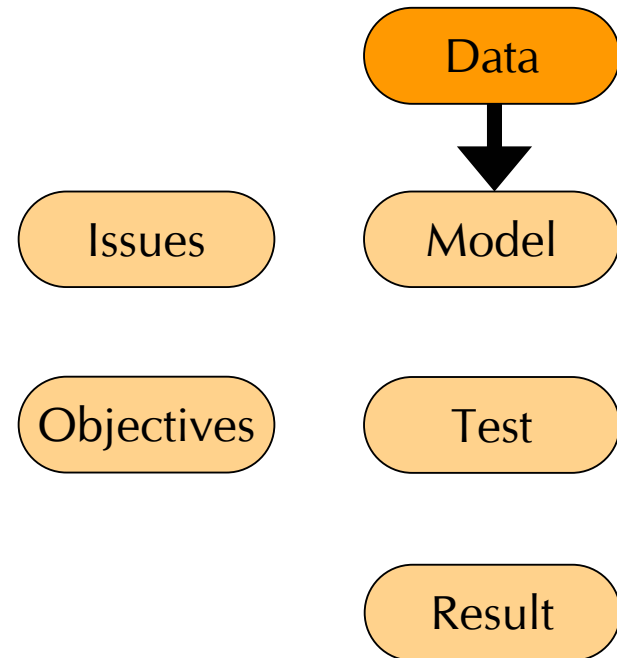
Assessment framework

- Use real and synthesised data
- Model of cash out arrangements central to analysis
- Broad issues already identified by Ofgem (BSAD, treatment of OM gas, etc)
- Test against objectives
- Iterate



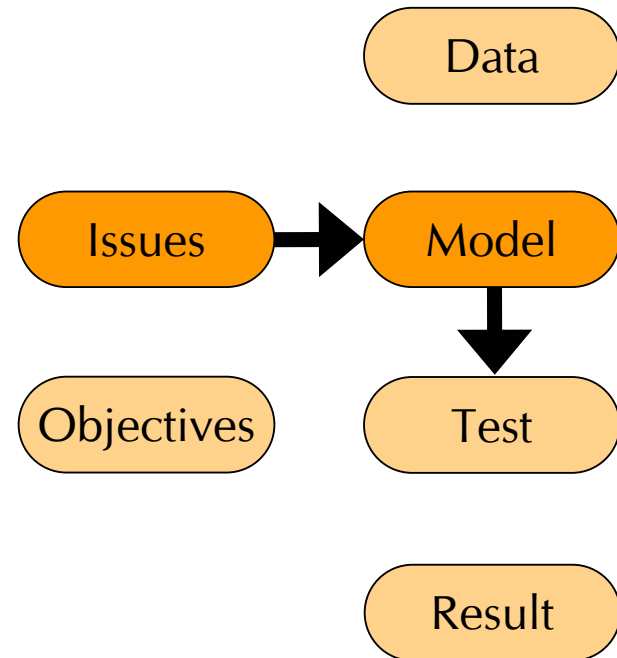
Data

- Categorise 'state' of system imbalance
- Derive data:
 - Volume of actions required to balance system
 - Volume and nature of actions available to SO
- NGT and Elexon to take lead
- CORWG audit data



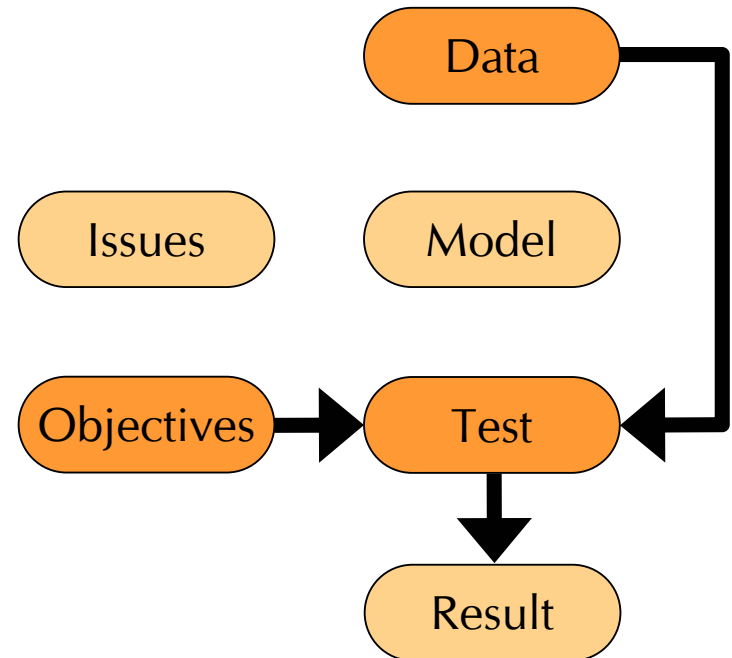
Model – the sausage machine

- Model cash out mechanism
 - Detailed
 - Flexible
 - Robust
- Issues - make changes to model:
 - For instance, BSAD:
 - aggregated / disaggregated; BSAD
 - net / gross BSAD
 - etc
- Run model; product: set of imbalance prices
- NGT and Elexon to take lead
- CORWG audit model



Test

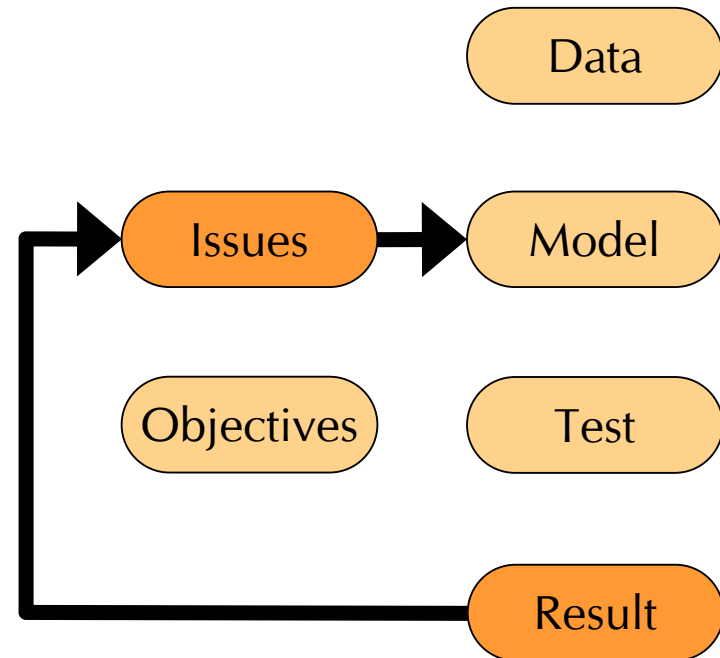
- Inputs:
 - Data: 'state' of the system
 - Set of imbalance prices
- Test: with regard to the state of the system, do prices promote cash out objectives to:
 - Provide appropriate commercial incentives to balance...; and
 - Reflect the costs incurred by the SO in balancing
- Subjective test: primary role of CORWG



Result

- Iterate:
 - Can more improvements be made?
 - New issues?
 - New data?
 - Interactions

- CORWG recommendation





Promoting choice and value for all
gas and electricity customers