

# Non-Domestic Renewable Heat Incentive (NDRHI)

[www.ofgem.gov.uk/ndrhi](http://www.ofgem.gov.uk/ndrhi)

26 JUNE 2026

## NDRHI Guidance Volume 2: Ongoing obligations and payments

### Overview

This guidance sets out our procedures for administering the Non-Domestic RHI under the regulations. The guidance is provided in two volumes. This document is Volume 2 and includes the ongoing requirements for RHI participants, information on how periodic support payments are calculated and paid, and our compliance and enforcement powers. Volume 1 explains eligibility for the RHI and how, when the scheme was still open, those hoping to join the scheme could have become accredited or registered as applicable.

This is revised guidance for the Non-Domestic RHI and supersedes the version published in October 2024. A separately published document provides a summary of updates made to the previous version.

# Contents

---

	Overview .....	1
<b>1.</b>	<b>Introduction.....</b>	<b>7</b>
	Scope of this guidance .....	7
	Devolved administrations .....	8
	Treatment of personal data .....	9
	How to use this guidance .....	9
	Ongoing obligations .....	10
<b>2.</b>	<b>Annual declarations and notifying us of a change in circumstances.</b>	<b>11</b>
	Overview .....	11
	Notifying us of a change.....	12
<b>3.</b>	<b>Provision of periodic data – meter readings, feedstock and sustainability information.....</b>	<b>15</b>
	What is periodic data?.....	15
	Frequency of submission of periodic data .....	16
	Meter readings .....	17
	Supporting meter readings.....	17
	When do I need to take meter readings?.....	17
	How to submit information.....	21
	Late data .....	22
	Errors in data .....	24
	Use of estimates.....	24
	Sustainability information .....	26
<b>4.</b>	<b>Ongoing fuel requirements – how to remain compliant.....</b>	<b>27</b>
	Overview .....	27
	Summary of your responsibilities relating to biomass fuels .....	28
	Keeping fuel records .....	28
	Air quality requirements.....	29
	Sustainability requirements .....	30
	Biomass Suppliers List (BSL) and Sustainable Fuel Register (SFR) .....	32
	Purchasing fuels authorised on the BSL or SFR .....	33
	Reporting to Ofgem when purchasing fuel from the BSL or SFR .....	34
	If you source your own woody fuel (self-supply) .....	34
	Reporting to Ofgem if you are a self-supplier/producer-trader .....	37
	Audits.....	37

	<b>Biomass and biogas CHP of 1MWe and above, accredited on the Renewables Obligation (RO)</b> .....	38
	<b>Criteria for woodfuel quality</b> .....	38
	<b>Overview of ancillary fossil fuel and contamination requirements</b> .....	41
	<b>Ancillary fossil fuel</b> .....	44
	<b>How to meet ancillary fossil fuels requirements</b> .....	45
	<b>Contaminated fuels and feedstocks</b> .....	47
	<b>Fossil Fuel use in anaerobic digestion (AD)</b> .....	49
	<b>Contamination limits for gasification and pyrolysis plants</b> .....	50
	<b>CHP systems</b> .....	51
	<b>Calculating the 'qualifying percentage' for solid biomass installations with installation capacity of 1MWth and above</b> .....	52
	<b>Definition of 'energy content'</b> .....	53
	<b>Peat ineligibility</b> .....	53
	<b>Eligible feedstocks in anaerobic digestion</b> .....	53
	<b>Gasification and pyrolysis</b> .....	54
	<b>Recovering payments</b> .....	57
	<b>Classification of fuel for all types of biomass and biogas</b> .....	58
	<b>The Biogas Apportioning Tool</b> .....	58
	<b>Submitting feedstock requirement information</b> .....	59
	<b>Additional requirements</b> .....	60
	<b>Compliance</b> .....	60
<b>5.</b>	<b>Ongoing obligations for heat pumps</b> .....	62
	<b>Heat pumps</b> .....	62
	<b>Heat pumps on a shared ground loop (SGL)</b> .....	63
	<b>Modified capacity for shared ground loops</b> .....	63
<b>6.</b>	<b>Tariffs and periodic support payments</b> .....	69
	<b>Periodic support payments</b> .....	69
	<b>Tariff Indexation</b> .....	69
	<b>Index-linking of tariffs</b> .....	70
	<b>Tariff indexation from 1 April 2016</b> .....	70
	<b>Additional capacity</b> .....	70
	<b>How payments are calculated</b> .....	70
	<b>Calculating payments for biogas installations</b> .....	73
	<b>Calculating tiered payments</b> .....	73
	<b>Calculating payments for installations using multiple metering where they have calculated a quarterly heat loss figure (QHLF)</b> .....	74
	<b>Calculating payments where a qualifying percentage is required</b> .....	75
	<b>Calculating payments if fuel consignments do not meet sustainability requirements</b> .....	76
	<b>Payments for biomethane producers</b> .....	77

	Calculating payments for heat pumps .....	79
	Calculating payments for new solid biomass CHP installations.....	80
	When do payment periods begin? .....	80
	Actions that may impact your payment schedule .....	80
	When do payment periods begin? .....	81
	Repayment of a grant by deductions .....	82
	Cap for shared ground loop systems .....	84
	Nominated bank account .....	85
	Subsidy Control Reporting .....	85
<b>7.</b>	<b>Maintenance</b> .....	<b>86</b>
	Biomass boiler maintenance.....	86
	Installation maintenance .....	87
	Meter maintenance.....	87
	Meter recalibration .....	89
<b>8.</b>	<b>Degression</b> .....	<b>92</b>
	Who was affected by depression .....	92
<b>9.</b>	<b>Additional fuel data reporting (only for biomass installations ≥1MWth and biomethane producers)</b> .....	<b>94</b>
	What is additional fuel data reporting? .....	94
	When to submit the additional fuel data relating to sustainability information .....	97
	Publication of additional fuel data relating to sustainability information	97
	Audits.....	97
<b>10.</b>	<b>Additional capacity</b> .....	<b>98</b>
	Additional RHI capacity (excluding biomethane) .....	98
	Informing us of installing additional capacity .....	99
	Additional capacity for biomethane .....	100
	Modified Capacity .....	100
<b>11.</b>	<b>Change of ownership, change of producer and relocation of an accredited RHI installation</b> .....	<b>102</b>
	Change of ownership of an accredited RHI installation .....	102
	Change of producer of biomethane for injection.....	104
	Transfer of part of an installation.....	106
	Relocation of an accredited RHI installation, and effect on tariff lifetime	106
<b>12.</b>	<b>Replacement plant</b> .....	<b>108</b>
	Changes in capacity.....	109
	How to apply for a replacement plant.....	111
<b>13.</b>	<b>Ongoing scheme obligations for biomethane producers</b> .....	<b>113</b>
	Propane.....	113
	Use of contaminated feedstocks .....	114

	<b>NDRHI and the Renewable Transport Fuel Obligation (RTFO) scheme</b>	114
	<b>Further validation on interaction with the RTFO scheme</b>	115
<b>14.</b>	<b>Ongoing scheme obligations for new solid biomass CHP systems</b>	117
	<b>Continued CHPQA certification</b>	117
	<b>Power Efficiency</b>	117
	<b>Power efficiency thresholds</b>	119
<b>15.</b>	<b>Compliance and enforcement powers</b>	121
	<b>Overview</b>	121
	<b>Withholding periodic support payments to investigate alleged non-compliance</b>	123
	<b>Withholding periodic support payments</b>	125
	<b>Permanently withhold or reduce periodic support payments</b>	127
	<b>Revocation of accreditation or registration</b>	128
	<b>Recovering overpaid periodic support payments</b>	129
	<b>Revocation of sanctions</b>	131
	<b>Evidence of criminal activity</b>	131
<b>16.</b>	<b>Inspection and audit powers</b>	132
	<b>Audit of accredited RHI installations</b>	132
	<b>Audits for biomethane producers</b>	133
	<b>Provision of access for site inspections</b>	133
	<b>Outcome of the audit process</b>	135
<b>17.</b>	<b>Dispute resolution</b>	136
	<b>General RHI queries and complaints</b>	136
	<b>Statutory review of decisions</b>	136
	<b>Costs</b>	138
	<b>Appendix one</b>	140
	<b>Appendix two - Declaration for Biomethane Producers: NDRHI and RTFO Interaction</b>	148
	<b>Appendix three – Guidance for producers on providing further validation of NDRHI and RTFO interaction</b>	149

© Crown copyright 2026

The text of this document may be reproduced (excluding logos) under and in accordance with the terms of the [Open Government Licence](#).

Without prejudice to the generality of the terms of the Open Government Licence the material that is reproduced must be acknowledged as Crown copyright and the document title of this document must be specified in that acknowledgement.

Any enquiries related to the text of this publication should be sent to Ofgem at:

10 South Colonnade, Canary Wharf, London, E14 4PU. Alternatively, please call Ofgem on 0207 901 7000.

This publication is available at [www.ofgem.gov.uk](http://www.ofgem.gov.uk). Any enquiries regarding the use and re-use of this information resource should be sent to: [psi@nationalarchives.gsi.gov.uk](mailto:psi@nationalarchives.gsi.gov.uk)

# 1. Introduction

---

This chapter provides background to this guidance, as well as outlining both the government's and Ofgem's involvement.

- 1.1 The NDRHI scheme closed to new applications in March 2021. Applicants with a tariff guarantee issued before 31 March 2021, held in the queue when budget became available, or granted an extension application were required to have applied for full accreditation or registration by March 2022. Following an extension granted by the Department for Energy Security and Net Zero, the last commissioning date for NDRHI technologies with an eligible tariff guarantee or extension application, who could not be eligible for the Green Gas Support Scheme was March 2023. Scheme participants are subject to ongoing obligations as detailed within this document.

## Scope of this guidance

- 1.2 There are two main purposes of our guidance. The first is to clarify how the RHI works, including your ongoing obligations as a participant. The second is to set out how we propose to apply the regulations in cases where we have discretion. This means, for example, that where the regulations allow us to ask you for evidence, we provide more detail in the guidance on what we may require from you.
- 1.3 We are responsible for publishing guidance on the governance and administration of the RHI, including our approach to ensuring compliance with the RHI, dealing with breaches of RHI requirements, and conduct of inspections and handling reviews of decisions.
- 1.4 This guidance does not claim to anticipate every scenario that may arise. Where a scenario arises, which is not addressed in this guidance, we will adopt an approach that we consider to be consistent with the relevant legislation. Any additional guidance we publish will be published on our website.
- 1.5 This guidance is not a definitive legal guide to the RHI scheme. Prospective participants are advised to familiarise themselves with it and read it in conjunction

with the regulations (as amended).<sup>1</sup> In the event of any conflict between the regulations and this guidance, the regulations take precedence. We will provide guidance on the eligibility of technologies where we can. However, if a technology is new, developers might find it helpful to seek their own legal and technical advice before approaching us.

- 1.6 This guidance represents Ofgem’s approach to matters concerning its general administration of the scheme in accordance with the current regulations. Where there are future changes to the regulations we will reconsider and revise, where appropriate, our administrative arrangements accordingly.
- 1.7 Where a participant contracts with third parties in relation to the generation of renewable heat or the production of biomethane, it is the participant’s responsibility to ensure, via contractual or other arrangements that these parties also comply with any relevant ongoing obligations under the RHI. The obligations entered into by the participant on becoming accredited or registered remain those of the participant rather than being transferred to the third party concerned.

### **Devolved administrations**

- 1.8 In accordance with the regulations, we can only make payments to eligible renewable heat installations that are generating heat in England, Wales or Scotland, or to biomethane producers injecting into the grid in these regions. Amendments to the relevant legislation are a matter for the Secretary of State and Scottish Ministers. Northern Ireland introduced its own RHI in its legislation and guidance, which came into effect on 1 November 2012.<sup>2</sup> We will administer the now closed NI RHI on behalf of the Northern Ireland government until autumn 2026.<sup>3</sup> The Isle of Man and the Channel Islands are excluded from the scheme. Separate guidance for the Northern Ireland scheme is published by the Department for the Economy (formerly the Northern Ireland Department for Enterprise, Trade and Investment).

---

<sup>1</sup> [The Renewable Heat Incentive Scheme Regulations 2018](#)

<sup>2</sup> [The Renewable Heat Incentive Scheme Regulations \(Northern Ireland\) 2012](#)

<sup>3</sup> [Northern Ireland Non-Domestic Renewable Heat Incentive | Ofgem](#)

## Treatment of personal data

- 1.9 All personal data collected from participants by Ofgem will be processed in accordance with the General Data Protection Regulations 2018. Ofgem is a public authority and must protect the public funds we handle, so we may use the information you have given us to prevent and detect fraud. As part of this process, your information may be supplied to a third party that conducts ID verification and bank account validity checks. We may also share this information, for the same reasons, with other government organisations involved in the prevention and detection of crime. Please note that some personal data will be shared with the Department for Energy Security and Net Zero (DESNZ, formerly Department of Business, Energy and Industry Strategy (BEIS) and Department of Energy and Climate Change (DECC)) for the purpose of monitoring the scheme, and that where appropriate, DESNZ may share that data with the Devolved Administrations.
- 1.10 For information on the policy context, an overview of the RHI, the role of Ofgem and government, and Ofgem's key functions, please see Volume 1 of the guidance.

## How to use this guidance

- 1.11 Once part of the scheme, participants must comply with various ongoing obligations. These include:
- regular submission of heat data, meter readings and sustainability data for bioenergy installations, as well as additional fuel data in some cases
  - maintenance of heating equipment and meters
  - reporting any significant changes to their installation or heat uses to us including a change of ownership or location
  - making annual declarations to us confirming compliance with the scheme.
- 1.12 Failure to comply with these obligations may lead to us taking compliance action against a participant. We will carry out audits of accredited RHI installations and biomethane facilities to encourage compliance with the regulations by identifying where participants are failing to meet their obligations.

### Ongoing obligations

- 1.13 Once you have received RHI accreditation for your installation or have successfully registered as a biomethane producer under the scheme, there are obligations that you must meet. Where applicable, these obligations, known as 'ongoing obligations', include reporting responsibilities for participants with accredited RHI installations or who are registered producers of biomethane, and must be adhered to for as long as you are a participant in the scheme.
- 1.14 Submission of reporting information and completion of the annual declaration must be undertaken by the Authorised Signatory for a participant. Not all ongoing obligations which apply to heat generating plants apply to biomethane producers. Where we state in this guidance that the obligation relates to an 'installation' or a 'plant', then this would generally not apply to a biomethane producer. As outlined in Volume 1 of this guidance, biomethane producers are 'participants' under the scheme (as are accredited RHI installation owners) so where we state that the obligation applies to 'participants', this would include biomethane producers. Volume 1, chapter 12 explains biomethane producers' additional obligations.

## 2. Annual declarations and notifying us of a change in circumstances

---

This chapter provides information on what the annual declaration is, how to submit one, and the methods available to notify us of a change in circumstances.

### Overview

- 2.1 All participants are required to sign<sup>4</sup> an annual declaration on or before the anniversary of the date on which the installation became accredited. The annual declaration will confirm that:
- the accredited RHI installation is meeting the eligibility criteria and ongoing obligations of the scheme, including that:
    - they are not generating heat for the predominant purpose of increasing their periodic support payments
    - the equipment is maintained. (If we are concerned that equipment is not being maintained, we can seek further evidence and where we find it is not being maintained, take appropriate enforcement action.)
  - the information provided for the previous 12 months has been accurate and complete to the best of the participant's knowledge and belief
  - there has been no change in circumstances, which may affect the participant's eligibility to receive the RHI.
- 2.2 There is a 30- day window in which you can submit the declaration. At the latest the declaration must be submitted by the anniversary of your accreditation date for the respective installation. You can submit the declaration up to 30 days before that. For example, if your installation became accredited on 10 November 2017, your window to submit the required annual declaration would be 10 October -- 9 November 2018. We will notify each participant of their annual declaration obligation by sending a reminder.

---

<sup>4</sup> For participants completing online annual declarations, a confirmation completed by the Authorised Signatory from their secure RHI user account replaces a physical signature

- 2.3 If an RHI participant fails to sign their annual declaration this will be treated as a failure to comply with an ongoing obligation of the scheme and we may take compliance action which may include suspending or withholding payments. We will normally recommence payments if the declaration is subsequently submitted within a reasonable period, but long-term failure to submit a declaration may result in further compliance action. For further details, please see chapter 15.
- 2.4 The Authorised Signatory for the installation is responsible for signing the annual declaration, thereby agreeing to its terms. Responsibility cannot be delegated to other parties.
- 2.5 Participants will be able to submit their annual declaration online through their RHI account, or for those participants who do not have access to the internet, in hard copy by post.

### **Notifying us of a change**

- 2.6 There are a number of issues and circumstances that we must be notified about as specified in the regulations and participants should be familiar with these in order to ensure compliance. For full details please refer to the regulations.
- 2.7 If your change relates to your system, please send a brief summary of the changes to your installation to [rhi.notification@ofgem.gov.uk](mailto:rhi.notification@ofgem.gov.uk). If we deem your changes to be material, we will contact you with instructions to amend your application. To ensure this process is efficient, please ensure all information about the change is provided. Please note that RHI payments will be suspended whilst the amendment is in progress.
- 2.8 Changes to installations and accounts can be made after the NDRHI scheme closes from midnight at the end of 31 March 2021. You must notify us of any change to your accredited installation or registration (for biomethane) within 28 days of having made the change. If we deem your changes to be material, we will contact you with instructions on how to amend your application.
- 2.9 If your change is about your account, for example changes to your bank information, changes to ownership, a change of email or other similar change, please email [RHI.AccountChanges@ofgem.gov.uk](mailto:RHI.AccountChanges@ofgem.gov.uk).

- 2.10 A participant must notify us where they have not complied with an ongoing obligation (or have become aware that they will not be able to do so) or where there has been any change in circumstances that may affect their eligibility to receive periodic support payments within 28 days of such non-compliance or change in circumstances<sup>5</sup>. This includes a change to any financial arrangement that was agreed for the purchase and installation of the RHI installation, whereby that arrangement may now be considered a grant. Please see Volume 1, chapter 4, paragraphs 4.16 – 4.25 for further information on grants. Participants must also tell us within 28 days of addition or removal of any plant supplying heat to the heating system of which their accredited RHI installation forms part<sup>6</sup>.
- 2.11 It is also a condition of accreditation that a participant must notify us within 28 days of any major change to their accredited RHI installation or the heating system of which it forms part.
- 2.12 In practice, this means that you should advise us of any major change to your installation or to any of the plants supplying heat to a heating system of which the installation forms part. In this context, 'major change' means any change which affects, or may reasonably be expected to affect, an installation's metering requirements or tariff rate, and the relocation of an accredited installation. We would not consider changes such as repainting or minor repairs to be major changes requiring notification.
- 2.13 If your system will be exporting heat off site, the same principles for advising us will also apply to any change of circumstance that may affect your eligibility to receive periodic support payments, including a change of heat use, or a major change in relation to any equipment used in the transportation or metering of eligible renewable heat.
- 2.14 If you fail to advise us of relevant matters of which we should be notified within 28 days as set out in the regulations, this will be a breach of your ongoing obligations as a participant. In these instances, we have the power under the regulations to take enforcement action against you. In deciding whether such action is appropriate, we will consider all the circumstances of the case, including for example, any reasons given for the delay in notification, the impact of the unreported change on eligibility

---

<sup>5</sup> Regulations, Part 4, chapter 3, Regulation 43(l)

<sup>6</sup> Regulations, Part 4, chapter 3, Regulation 43(m)

or expected levels of tariff payments, any previous delays in your required notifications etc. For further information, please see chapter 15.

- 2.15 You must also notify us in writing if any of the information you provided in support of your application for accreditation or registration was incorrect. We consider 28 days from the date on which you discovered the information to be incorrect to be a reasonable timeframe to inform us. We will then assess any impact on your tariff rate or eligibility on a case-by-case basis.
- 2.16 You must also notify us within 28 days if you are the owner of an eligible installation which is a new solid biomass combined heat and power (CHP) systems, where CHPQA certification (the Combined Heat and Power Quality Assurance Standard Issue 6, as outlined in the RHI Regulations) ceases to apply.
- 2.17 Participants must keep their contact details, bank details, and Authorised Signatory information up to date, and notify us of any changes.

### 3. Provision of periodic data – meter readings, feedstock and sustainability information

---

This chapter provides guidance on the submission of meter readings and sustainability information by participants. Our approaches to late, incorrect and estimated data are also explained.

#### What is periodic data?

- 3.1 Once an installation is accredited, or a producer of biomethane registered, participants have to submit information on a regular basis in order to comply with their ongoing obligations and for us to calculate the appropriate payment.
- 3.2 The information required on a quarterly basis may include:
- meter readings
  - fuel data regarding ancillary and/or contaminated fuels (for certain bioenergy installations – see chapter 4). This is different to the sustainability requirements that apply to all new and existing participants using biofuels from 5 October 2015.
  - electricity meter readings (for heat pumps accredited on or after 28 May 2015 – see chapter 5)
  - sustainability declarations and information (see chapter 4 in this guidance document. There is also an Easy Guide to Sustainability<sup>7</sup> available as a good starting point).
  - additional fuel data reporting (for certain solid biomass installations or biomethane producers – see chapter 9)
  - supporting data or calculations as set out in conditions of accreditation, or other evidence that may be required from us to calculate the appropriate payment.

---

<sup>7</sup> <https://www.ofgem.gov.uk/publications-and-updates/easy-guide-sustainability>

- 3.3 The information required on an annual basis may include:
- annual declarations – see chapter 2
  - Annual submission of feedstock requirement information (for certain biogas and biomethane installation - see chapter 4)
  - Annual submission of sustainability audit report (please refer to the RHI Self-Reporting Guidance<sup>8</sup> and RHI Sustainability Audit Guidance for Participants and Auditors<sup>9</sup>)
- 3.4 We refer to the quarterly information listed above as 'periodic data' (however, this is not a defined term in the regulations). Participants with more than one accredited installation will need to provide periodic data separately for each installation. For further information on periodic data requirements that apply to biomethane producers only, see chapter 13.

### Frequency of submission of periodic data

- 3.5 The frequency with which meter readings for installations must be provided is determined by the installation capacity:
- installations with a capacity of under 1MWth will be required to take and submit quarterly meter readings
  - installations with a capacity of 1MWth and above will be required to take and submit monthly meter readings. These monthly readings will be processed on a quarterly basis.
- 3.6 Installations which are required to submit sustainability information will be required to report on their compliance with the sustainability criteria quarterly in all cases, as will producers of biomethane.
- 3.7 Fuel data regarding ancillary and/or contaminated fuels and additional fuel data reporting information (where applicable) are required to be submitted quarterly in all cases.

---

<sup>8</sup> <https://www.ofgem.gov.uk/publications-and-updates/non-domestic-rhi-main-guidance>

<sup>9</sup> <https://www.ofgem.gov.uk/publications-and-updates/non-domestic-rhi-main-guidance>

## Meter readings

- 3.8 Participants will be required to submit meter readings in kilowatt hours of heat (kWhth). These meter readings are used to calculate the Eligible Heat Output (EHO) for the accredited installation. The EHO determines the periodic support payments you will receive.
- 3.9 All participants will be required to submit meter readings regardless of whether their installation is classed as 'standard' or 'multiple' for metering purposes, or if they are a registered producer of biomethane. (Please see volume 1, chapter 13 for further details on the classification of standard and multiple<sup>10</sup>).

## Supporting meter readings

- 3.10 Participants need to provide a meter reading<sup>11</sup> for all RHI-relevant meters. Also, if in some instances 'proxy measurements' (see Volume 1, chapter 13 'Proxy Measurements' section) are being used instead of heat meters to record any additional back up heat generation plant used on the system, then the associated meter readings from the relevant gas or electricity meter(s) should be provided. The assumption is made that 100% of the fuel is converted to heat, so that these readings represent the heat generated by the plant in kWhth. These readings are required because the proxy measurements are also used to calculate the EHO for the installation. It is an ongoing obligation that meter readings are provided as cumulative figures in kWhth.

## When do I need to take meter readings?

- 3.11 We require applicants to take an initial meter reading for all RHI-relevant meters and provide this as part of their application for accreditation, as the date on which the application is submitted will often coincide with the date of accreditation (see Volume 1, chapter 2 for more information on date of accreditation).

---

<sup>10</sup> Please note that as of 1st April 2021, the 'simple' and 'complex' classifications were removed from the scheme. As such, any installation that was previously classified as a 'simple' will be considered 'standard' as of 1st April 2021 and any system classified as 'complex' will be considered 'multiple' as of 1st April 2021.

<sup>11</sup> Here, 'meter' refers to both heat meters and steam measuring equipment (or steam 'meters') and where relevant gas and electricity meters for where 'proxy measurements' are used if additional gas and electricity back up heat generation plant is on the heating system. Further information on meters and metering requirements can be found in volume 1, chapter 13.

- 3.12 The same time periods apply to the relevant energy measurement readings for biomethane producers. The initial reading must be taken within the three days prior to the date of submission of their application. Participants will then need to take subsequent meter readings quarterly or monthly as set out above. The month or quarter will run from the installation's date of accreditation. All meter readings must be taken within +/- three days of this date.
- 3.13 For example, a 100kWth installation that has a date of accreditation of 1 November 2017 will need to take their first quarterly meter reading within +/- three days of 1 February 2018. A 2MWth installation accredited on the same day will need to take their first monthly meter readings within +/- three days of 1 December 2017. Participants will then have up to one month after the end of the relevant monthly/quarterly period to submit their meter readings to us.
- 3.14 It is in your interest to submit your required data to us early on in your submission window as we will only begin to process your payment once we have received your data. The sooner you submit your data the less time you may need to wait to receive your payment (subject to any queries we may have about any of the periodic data submitted).

**Table 1: Example of key dates for taking and submitting meter readings**

Your meter reading date:	When to take meter readings (meter reading window)	When to submit Periodic Data
15 July	Between 12 and 18 July	Between 12 July and 14 August

- 3.15 An example timetable for providing meter readings for one quarter is shown below for a ground source heat pump. Note that no sustainability information is required for this technology.

**Table 2: Example timetable for providing meter readings for one quarter**

Date	Activity	Meter readings required
3 April 2017	<u>Application</u> Participant applies for accreditation on a 500kWth ground source heat pump	Initial meter readings provided as part of the application for accreditation
30 April 2017	<u>Accreditation</u> Installation is accredited, with a date of accreditation 03/04/2017	A new reading at this stage is not required
29 June 2017	<u>3 days to end of quarter</u> Window for taking meter readings opens at start of the day (as it is 3 days before the end of the quarter on 02/07/2017) Submission window for entering meter readings on the RHI Register opens at start of day.	Meter readings must be taken for all RHI relevant meters in the next 6 days
2 July 2017	First quarter ends	
5 July 2017	<u>3 days after the end of the quarter</u> Window for taking meter readings closes at end of the day (as it is 3 days after the end of the quarter on 02/07/2017)	Meter readings must have been taken for all RHI relevant meters
1 August 2017	<u>One month after the end of the first quarter</u> Submission window for entering meter readings closes at end of day	Meter readings for all RHI relevant meters must have been entered on to the Register

3.16 For each quarterly submission the sustainability information provided should be for the fuel(s) used for the duration of that quarter. An example timetable for providing meter readings for one quarter is shown below for a biogas plant. Please note that sustainability information is required for this technology.

**Table 3: Example timetable for providing meter readings for one quarter for a biogas plant**

Date	Activity	Meter readings required
3 April 2016	<u>Application</u> Participant applies for accreditation on a 500kWth biogas plant	Initial meter readings provided as part of the application for accreditation
30 April 2016	<u>Accreditation</u> Installation is accredited, with an accreditation date of 03/04/2017	A new reading at this stage is not required
29 June 2016	<u>3 days prior to the end of a quarter</u> Window for taking meter readings opens at start of day (as it is three days before the end of the quarter on 02/07/2017). Submission window for entering heat output data and meter readings on to the RHI IT system opens at start of day	Meter readings must be taken for all RHI relevant meters in the next six days
02 July 2016	First Quarter ends	
05 July 2016	<u>3 days after the end of the quarter</u> Window for taking meter readings closes at end of the day(as it is three days after the end of the quarter on 02/07/2017)	Meter readings must have been taken for all RHI relevant meters
01 August 2016	<u>1 month after the end of the first quarter</u> Submission window for entering heat output data and meter readings closes at end of day	Meter readings for all RHI relevant meters must have been entered on to the Register, and sustainability information for consignments used between 03/04/17 and 02/07/17

3.17 The timing and process for taking meter readings and providing them to us will be sent to participants when their application for accreditation has been approved.

### **Submission of meter readings and sustainability information (where applicable) while awaiting accreditation**

- 3.18 Participants will need to take meter readings at the appropriate frequency once their application for accreditation or registration has been submitted and is being reviewed. This will allow accurate payments to be made if the application is approved. This is most likely to be relevant to large installations as monthly meter readings are required and where a complex accreditation could take over a month to gain approval.
- 3.19 Where the eligible installation has not yet been accredited (or in the case of a biomethane producer that producer has not been registered), the month or quarter will run from the date of submission of the application. For more information about determining the date on which your application was deemed submitted for these purposes, please see Volume 1, chapter 2, section 'Date of accreditation'.

### **How to submit information**

- 3.20 Meter readings and other periodic data including sustainability information should be submitted via the participant's account on the RHI Register. Where an alternative submission route for particular pieces of information is applicable, you will be informed of this.
- 3.21 Where the eligible installation has been accredited (or in the case of biomethane producer, the producer has been registered), the RHI Register will be able to accept periodic data in time for first quarterly data submissions.
- 3.22 The data you will need to submit depends on whether you participate as the owner of an accredited RHI installation or registered producer of biomethane, the technology type of your installation (as applicable) and any separate conditions agreed with us. Please see the 'Queries' section in volume 1, chapter 1 for information on how to raise a query about applicant eligibility or the operation of the scheme.
- 3.23 Please contact us if submission of data or notices in writing presents a problem for you so we can make alternative arrangements. It is your responsibility to ensure we have received the information on time.

- 3.24 We will discuss the requirements for submission of periodic data with registered biomethane producers as part of their registration onto the scheme.

### Late data

- 3.25 The regulations allow us to accept late periodic data at our discretion. For these purposes, we regard late periodic data as data which is taken or submitted outside of the timescales stipulated in 3.13. We will consider each late data request on a case-by-case basis. Where we suspect that participants may be failing to comply with ongoing obligations, we will take further steps to determine the facts, as detailed in chapter 15, and decide what action may be appropriate.
- 3.26 Examples of the types of scenarios where a late data request is more likely to be considered reasonable are:
- 1) The participant has documentary evidence to demonstrate that they attempted to send the data to us:
    - We expect the majority of these cases to relate to technical problems. However, the onus is on the participant to resolve their own technical problems. Participants are encouraged to keep evidence of this
    - In addition, we expect participants to take all reasonable action to ensure delivery of the data. This includes responding to any error messages they may receive, and where appropriate querying whether data has been submitted. A participant should contact us to arrange for an alternative way to submit the data (such as email) if there are ongoing problems accessing the Ofgem RHI Register.
  - 2) There has been a material incident at an accredited RHI installation, for example there has been a serious fire or a major flood
    - We normally expect participants to inform us of this before the deadline
  - 3) There has been an unplanned absence of a key staff member and it has not been possible to arrange cover

- In the majority of cases, we expect participants to be able to arrange cover and we will be less sympathetic to larger organisations that should have adequate resources to cover absences
- 4) We have introduced new procedures or changed existing procedures and the transition to the new procedures has made it difficult for the participant to submit their data on time
- In all cases, we will take the nature of the new or changed procedure, the lead time which we provided before it was implemented and how it was communicated into account. When arriving at a decision, we will also consider the following factors:
    - whether the participant has notified us of potential problems before the deadline
    - whether the participant has previously made any late data requests and on what basis
    - whether the participant has taken appropriate action to try to prevent the delay in data submission, and
    - the length of the delay in data submission.
- 3.27 This is not an exhaustive list but indicates the types of circumstances where we would be more likely to exercise our discretion to accept late data.
- 3.28 Before the participant makes a late data request, they should check if their meters are capable of storing historical readings; if this is the case, they may be able to submit accurate data retrospectively for quarterly periodic submission windows. If historical data would need to be submitted, we may still determine that there has been a failure to comply with ongoing obligations.

## Errors in data

- 3.29 Where we consider it appropriate, we may accept revised meter readings or other periodic data if:
- the participant subsequently realises that the information originally submitted is erroneous, or
  - we become aware through other routes, such as audit, that this is the case.
- 3.30 We will consider each request about revised periodic data submission on a case-by-case basis. Given that deliberately or carelessly submitting inaccurate data would generally constitute a failure to comply with ongoing obligations, we may take further steps as detailed in chapter 15 to determine the facts and decide what action, if any, may be appropriate to deal with the matter. In doing so, we will take a number of factors into consideration, including how the error was notified to us.
- 3.31 In addition to any action which we may take about a particular error in data submitted as described above, where errors in your periodic data are material or repeated, we may decide to take further enforcement action against you. 'Materiality' for these purposes will be determined on the basis of all relevant circumstances (this may include the period over which the error occurred, the amount by which the payments were affected, the means by which the error was discovered (e.g. by audit or inspection or by notification from the participant), the extent to which the participant should have been aware of the error and the degree of cooperation demonstrated by the participant in rectifying the error).

## Use of estimates

- 3.32 The regulations allow us at our discretion to accept estimated meter readings on which to base calculations of payments in exceptional circumstances, which may be relevant where a participant satisfies us that it would not be possible for them to provide accurate meter readings for a quarterly period. An example of why a participant may want to use an estimate would be if there were a temporary failure of metering equipment that meant that an accurate reading was not possible. This discretion may

also apply to accepting estimates of other associated data as may be required, and we would expect to apply similar principles to the approach set out below for estimated meter readings.

3.33 Payments for periodic data submissions may be calculated using approved estimated meter readings or data in a maximum of 8 quarterly submission periods. Any periods of time estimated for payment within a quarterly submission period would count as 1 instance of estimation. For example:

- if you require estimated data for 3 days or 90 days in a single quarterly submission period, this would still count as 1 instance of estimation.
- if you require estimated data for 3 or 90 days which span two quarterly submission periods, this would count as 2 instances of estimation.

3.34 We will not make payments on further estimates after this limit of 8 quarterly submission periods has been reached, or where it would mean revising previously made payments.

3.35 The method for estimating meter readings will need to be agreed in advance with us. This means that the onus is on the participant to contact us as soon as the need for estimation arises and provide evidence as to the reasons why accurate meter readings will not be available. On the date that it is discovered an estimate would be required, a participant must notify us in advance of the next deadline for provision of their periodic data.

3.36 We will only accept estimated meter readings that are not within the agreed timeframe detailed above in exceptional circumstances. Agreement to the provision of estimated meter readings for one quarterly submission period does not necessarily mean that an estimate will be acceptable for a subsequent period, nor does it in any way imply a waiver of your metering, maintenance or other ongoing obligations under the regulations.

3.37 Replacements, relocations or changes in ownership do not affect the number of payments for which estimated meter readings or data have been submitted in relation to an installation. If payments for quarterly periods have previously been based on

estimated meter readings, and the installation has subsequently been replaced, relocated or changed owners, these estimates will still count towards the limit described in 3.30.

### **Sustainability information**

- 3.38 See chapter 4 for details of the sustainability information you will be expected to submit on a quarterly basis.

## 4. Ongoing fuel requirements – how to remain compliant

This chapter covers the ongoing fuel eligibility requirements for bioenergy plants and provides guidance on how these requirements can be met. This includes information on how to stay compliant with the sustainability requirements, emissions and feedstock requirements (where applicable). This chapter also includes information on keeping fuel records and how to account for contaminated and ancillary fuel use. The requirements for plants using solid biomass contained in waste are also explained.

### Overview

- 4.1 This chapter applies to installations using fuels and/or feedstocks<sup>12</sup> derived from biomass to generate heat (or heat and power) or producing biomethane for injection<sup>13</sup>. Relevant plants are those producing biogas for conversion into biomethane and those generating heat using:
- solid biomass<sup>14</sup>
  - solid biomass contained in waste
  - biogas
  - CHP installations using any of the above fuels.
- 4.2 These plants have specific ongoing fuelling requirements and allowances that must be followed in addition to the initial requirements for accreditation and other ongoing obligations. These are outlined in this chapter.
- 4.3 Please contact us for queries on eligible fuels to be used and fuel measurement and sampling (FMS) arrangements, if these are not answered by information in this chapter and the recommended guidance detailed throughout.

<sup>12</sup> Feedstock' is usually the term applied to materials used in a biogas production plant, whereas 'fuel' generally refers to what is actually combusted for heat generation such as solid biomass or biogas.

<sup>13</sup> See volume 1 of the guidance for the eligibility criteria for plants using biomass-based fuels.

<sup>14</sup> This includes 'woodfuel'. Please refer to the section on the criteria for woodfuel quality below.

## Summary of your responsibilities relating to biomass fuels

4.4 You have up to five main ongoing obligations for the fuels you use in your biomass, biogas and CHP installations or which are used to produce biomethane for injection. These are:

- Keep fuel records (and provide these on request). For further information on fuel records please refer to the Non-Domestic RHI Guide to keeping fuel records for participants using 100% biomass fuels<sup>15</sup>.
- All fuels used must be compliant with your emissions certificate(s) and be suitable for use in your boiler (for biomass installations with a date of accreditation on or after 24 September 2013).
- All fuels used must be compliant with the sustainability requirements.
- Keep records and evidence of fuels used which are contaminated with fossil fuels (or derivatives thereof) and/or the use of ancillary fuels (and provide these on request).
- Compliance with feedstock requirements. All installations producing biogas from anaerobic digestion (AD) with a date of accreditation on or after 22 May 2018, and all biomethane producers injecting biomethane derived from biogas that was produced by AD with a date of registration on or after 22 May 2018 are subject to feedstock requirements.

4.5 You must be complying with these requirements from the time you apply to the RHI scheme. This is because when your application is approved, your date of accreditation is usually considered to be the date you applied to the scheme. We may change this date if your application was not considered to be properly made on the date you submitted the application to Ofgem or was not eligible on that date – please see Volume 1, chapter 2.

You will find more information below on your responsibilities regarding each of these requirements.

### Keeping fuel records

4.6 RHI installations which generate heat (or heat and power) from solid biomass, solid biomass contained in waste or biogas, or producers of biomethane for injection, must

---

<sup>15</sup> <https://www.ofgem.gov.uk/publications-and-updates/renewable-heat-incentive-guide-keeping-fuel-records-biomass-1>

keep records of all the fuels and/or feedstocks used. Guidance on what we expect to see from your fuel records can be found in the guide to keeping fuel records.<sup>16</sup>

- 4.7 Any installations which are also required to report additional fuel data (over and above the mandatory reporting against sustainability requirements) must also keep records of this additional fuel data.
- 4.8 Where fuels are not purchased from a third party but are instead harvested by the RHI participant themselves (e.g. when a woodland owner harvests wood from their own land), a fuel log should be kept of all deliveries made to the boiler house, along with records of where harvesting has taken place.

### Air quality requirements

- 4.9 This ongoing obligation applies only to solid biomass participants who have a date of accreditation on or after 24 September 2013. The 2013 Amendment No.2 Regulations (introduced from 24 September 2013) added an ongoing obligation for biomass participants that you must operate your plant in accordance with the manufacturer's instructions relating to the control of particulate matter and oxides of nitrogen emissions.
- 4.10 If your biomass boiler has an RHI emissions certificate<sup>17</sup> it is your responsibility to understand the scope of your emissions certificate (e.g., what the EN fuel standard referenced on your certificate means and permits you to use) and you must only use these fuel types specified on your certificate in your installation.
- 4.11 If you wish to use other fuel types, you must first obtain and submit an emissions certificate for that fuel type.
- 4.12 It is also your responsibility to ensure that the fuels you use in your plant are suitable for use in that plant. Using fuels which are not recommended for use by the manufacturer could lead to damage and invalidation of any warranty.
- 4.13 Additionally, you must not use fuel with a moisture content greater than the maximum moisture content specified on your certificate.

---

<sup>16</sup> <https://www.ofgem.gov.uk/publications-and-updates/renewable-heat-incentive-guide-keeping-fuel-records-biomass-1>

<sup>17</sup> <https://www.ofgem.gov.uk/publications-and-updates/getting-emissions-certificates-right-renewable-heat-incentive>

- 4.14 Please note that if an environmental permit subsists for your plant then the requirement for an RHI emissions certificate does not apply to you but you must operate your plant in accordance with the environmental permit. Regardless of RHI requirements, participants are still legally required to comply with their wider local or national environmental permitting or rules.

### Sustainability requirements

- 4.15 The sustainability requirements came into force from 5 October 2015 and require that fuels and feedstocks used in solid biomass, solid biomass contained in waste, CHP and biogas installations as well as to produce biomethane for injection are sustainable.
- 4.16 You must use fuels that meet the sustainability requirements to meet your ongoing obligations and receive RHI payments. This applies to all existing and new participants – even if you have already been receiving RHI payments, you will need to comply with these requirements. The sustainability of the fuel is determined by:
- Lifecycle greenhouse gas (GHG) emissions limit of 34.8gCO<sub>2</sub> per MJ of biomass heat generated or biomethane injected. This is designed to achieve a 60% greenhouse gas emissions saving relative to the EU fossil fuel heat average,
  - Compliance with the land criteria.
- 4.17 Participants who use fuel during any quarter in which they are not able to demonstrate meets the sustainability requirements are likely to have their RHI payments affected for that quarter, as it has been mandatory to use sustainable fuel from 5 October 2015.
- 4.18 Participants burning fuels or using feedstocks which meet the definition of waste <sup>18</sup>as set out in the regulations should be aware that this is considered to be sustainable so do not need to report against the GHG and land criteria. Further information on this, as well as how different 'residues' are considered under the criteria, can be found in the sustainability self-reporting guidance<sup>19</sup>.

---

<sup>18</sup>"waste" has the meaning given in Article 3(1) of Directive 2008/98/EC of the European Parliament and of the Council on waste and includes excreta produced by animals

<sup>19</sup> <http://www.ofgem.gov.uk/ndrhi-guidance>

4.19 There are four routes of demonstrating compliance:

- Source fuel from the Biomass Suppliers List (BSL) (woody biomass only), or the Sustainable Fuel Register (SFR) (non-woody biomass including energy crops and agricultural residues)
- Register as a self-supplier on the BSL (installations under 1MWth for woody biomass only)
- Self-report on the criteria
- Biomass or biogas CHP plant of 1MWe or above which is accredited on the Renewables Obligation (RO) scheme and satisfying the sustainability criteria on that scheme. Please see paragraphs 4.54-4.57.

4.20 We strongly encourage biomass installations using woody or non-woody fuels, to demonstrate compliance with the sustainability requirements using the BSL or SFR, as it is the least burdensome route. All biogas installations and producers of biomethane for injection must self-report against the sustainability criteria.

4.21 It is permitted to use some fuel that is authorised on the BSL or SFR, and some fuel that you need to self-report against in any one quarter. In this case you should refer to the guidance for both compliance routes.

4.22 Those using the BSL or SFR to demonstrate compliance will find all the information you need in this guidance document, in Volume 1 and in the Easy Guide to Sustainability <sup>20</sup>

4.23 Self-reporters should refer to the sustainability self-reporting guidance and the easy guide to sustainability for further information.

---

<sup>20</sup> <https://www.ofgem.gov.uk/publications-and-updates/easy-guide-sustainability>

### **Biomass Suppliers List (BSL) and Sustainable Fuel Register (SFR)**

- 4.24 The easiest way to prove you meet the sustainability requirements is by using the BSL or SFR, either by purchasing fuels from suppliers listed on either or by registering as a self-supplier on the BSL (or as a Producer-Trader if you self-supply but also buy in raw materials) or a combination of these, depending on whether your fuel is woody or non-woody.
- 4.25 The BSL is a list of suppliers who supply fuel(s) which are compliant with the RHI sustainability requirements, as assessed by the list manager. It is for woody biomass only (wood or wholly derived from wood, including waste-wood). The list does not include non-woody biomass including energy crops or agricultural residues. It was developed with the support of DESNZ and has been publicly accessible since 25 September 2014. It is not administered by Ofgem.
- 4.26 The SFR is a list of suppliers supplying fuel(s) compliant with the sustainability criteria in the same way as the BSL, but for non-woody fuels, and was approved by DESNZ on 4 November 2016. Users can categorise themselves as producers (those growing, harvesting crops or producing fuels for use in RHI accredited systems); traders (those purchasing fuels and then reselling that fuel to end users); or end users (those who purchase fuels for use in their own accredited RHI system). Please see the SFR website for more information on what category you fall into.
- 4.27 Participants can demonstrate that they meet the sustainability requirements by using an “approved sustainable fuel”<sup>21</sup>, which is a fuel that has been authorised by the administrator of either list. Please note neither list is administered by Ofgem.

---

<sup>21</sup> RHI Regulations, Regulation 2

## Purchasing fuels authorised on the BSL or SFR

- 4.28 You can demonstrate that you meet the sustainability requirements by purchasing your fuel from a supplier listed on either list. From 1 April 2022, woodfuel (as defined in Schedule 4A of the Regulations) sourced from the BSL and used to generate heat in an accredited RHI installation must meet the criteria for woodfuel quality. There was a temporary suspension of the wood pellet requirements from 23 November 2022 to 22 November 2023 (as outlined at paragraph 4.58).
- 4.29 For further information on the criteria for woodfuel quality, please see from paragraph 4.58 below.
- 4.30 The lists are publicly available and you can search for suppliers on either website.<sup>22</sup> If you are using this route of compliance, the fuel(s) must have been authorised on the relevant list when you received the fuel.
- 4.31 Suppliers registered on either list may also sell fuels that do not meet the sustainability requirements. Participants should confirm when purchasing from a supplier that the fuel has an authorisation number, and is therefore an “approved sustainable fuel”.
- 4.32 All “approved sustainable fuel” will have an authorisation number, which is allocated by the list administrator. This will be unique to the specific fuel type from the specific supplier. This authorisation number will be added to invoices/receipts by the fuel supplier.
- 4.33 You must keep these records as we will ask you to report this number to us for each fuel used each quarter. The format of a BSL number is BSLXXXXXXXX-XXXX, where each ‘X’ is a number. The format of a SFR number is SFRXXXXXXXX-XXXX, where each ‘X’ is a number. This is what you will need to look for on your receipt/invoice. You should also keep any evidence such as delivery notes that prove when you received the fuel delivery if this isn’t on your receipt/invoice.
- 4.34 You should only report this number to us for fuel used in a specific quarter if you have the invoice or receipt that relates to that delivery.

---

<sup>22</sup> <http://biomass-suppliers-list.service.gov.uk/find-a-fuel> <http://sfregister.org/find-fuel>

- 4.35 Participants should talk to their manufacturer/installer to ensure the correct type of fuel is being used in the boiler. They should also check which fuels are listed on their emission certificate.<sup>23</sup> Once the correct type is identified, if it is wood or wholly derived from wood, suppliers selling that fuel can be found on the BSL Find a Fuel website.<sup>24</sup> If it is non-woody, suppliers can be found on the SFR website.
- 4.36 You should check the BSL or SFR or contact your supplier regularly to ensure that the fuel you are using is still listed. If the fuel(s) are no longer registered and you receive further deliveries, you may not meet the sustainability requirements. In this case you may have to provide your own evidence to demonstrate that the fuel meets GHG and land criteria (see the sustainability self-reporting guidance<sup>25</sup>).

### **Reporting to Ofgem when purchasing fuel from the BSL or SFR**

- 4.37 You must declare every quarter whether you are sourcing fuel from the BSL and/or SFR, and provide the authorisation number(s) of the fuel(s) used in each quarter. You will need to do this in your quarterly periodic data submissions, along with your meter readings. You will see that there is a section on the RHI Register for 'Sustainability Information' in your quarterly submissions.
- 4.38 The authorisation number(s) can be found on your fuel invoices or receipts. The format of authorisation numbers on the BSL is: BSLXXXXXXX-XXXX where each 'X' is a number. For the SFR it is the same format but begins with SFR.
- 4.39 Receipts/invoices and delivery notes that show the authorisation number and the date that the fuel was delivered (or delivery notes where provided) must be retained throughout participation on the scheme, and these must be provided if requested by Ofgem.

### **If you source your own woody fuel (self-supply)**

- 4.40 RHI participants can register as a self-supplier on the BSL if:
- their installation is less than 1MWth capacity; and either:

---

<sup>23</sup>This is only relevant for participants with a date of accreditation on or after 24 September 2013. Please see chapter 9 of the Volume One Guidance for further details on emissions certificates.

<sup>24</sup> <http://biomass-suppliers-list.service.gov.uk/find-a-fuel>

<sup>25</sup> <http://www.ofgem.gov.uk/ndrhi-guidance>

- they source woody biomass from a permitted location, where a permitted location means a place:
  - (a) in respect of which the participant has a right to harvest the solid biomass, whether by virtue of ownership, tenancy or otherwise; and
  - (b) which is no more than 50 miles from the plant in which the solid biomass is used; or
- they obtain waste wood - or have it obtained on their behalf - directly from the place where it first becomes waste. <sup>26</sup> This second option is only available to self-suppliers registering on the BSL.

4.41 If this applies to you, you must register as appropriate on the BSL, or SFR, as a self-supplier in order for Ofgem to be able to deem you to meet the sustainability requirements.

4.42 Alternatively, if you purchase raw materials and process it yourself for use in your installation then you can also register yourself on the BSL to demonstrate compliance, but it would be as a producer-trader.

4.43 You could also be using a combination of self-supplied fuel and purchasing raw material, in which case you can register on the BSL as a producer-trader to demonstrate the compliance of all of your fuels against the sustainability criteria.

---

<sup>26</sup> Regulation, Part 5

**Table 4: Self-supplier and Producer-trader classifications on the BSL**

**Raw Materials Criteria**

<b>Self-supplier</b>	<b>Producer-trader</b>
Sources all wood from own woodland	Purchases in a raw material (i.e. timber and processes it)
Sources wood within 50 miles of the boiler in which it is burnt	Can use wood from own woodland but is purchasing some in too

**Fuel Criteria**

Does not sell any of the woodfuel to third party	Sells woodfuel on to third party (optional and not a requirement)
Has option to purchase fuel from BSL authorised supplier	Has option to purchase fuel from BSL authorised supplier

- 4.44 If you self-supply non-woody fuel for your installation you may register on the SFR. Please see their website for information on whether to categorise yourself as a producer, trader or end user.
- 4.45 Ofgem do not administer the BSL or SFR. For further information on classification of suppliers on the BSL and for further details of how to apply, please see the BSL Guidance. <sup>27</sup>There is also a specific factsheet for self-suppliers and producer-traders on their website. For the SFR further details can be found on their website and a good place to start is their FAQs.<sup>28</sup> You will find contact details on both websites if you need any assistance.
- 4.46 If you source your own fuel but do not register yourself on the BSL or SFR, you will need to use the self-reporting route of compliance (see the sustainability self-reporting guidance) which would be significantly more onerous.
- 4.47 From the date you become registered on the BSL or SFR as a self-supplier, Ofgem will consider you to be using sustainable fuel. This means that any fuel that was harvested or stored before registration began will also be considered sustainable. To note, this specifically applies to self-suppliers registered on the BSL or SFR, not to those purchasing fuels from suppliers listed on the BSL or SFR. This is because the regulations stipulate that fuel must be an authorised fuel when it is received by the participant, but this provision does not apply to self-supplied fuel.

<sup>27</sup><http://biomass-suppliers-list.service.gov.uk/>

<sup>28</sup><http://sfregister.org/faq>

- 4.48 Self-suppliers will receive an authorisation number for each boiler location at which they are authorised. In practice this means that almost all self-suppliers have a single authorisation number, but there may be circumstances where a self-supplier has two boilers, one using waste wood and one non-waste – and would have a BSL authorisation number for each installation, for example.
- 4.49 Occasionally a self-supplier may be forced by factors they could not have anticipated, to produce their own fuel from raw material not from their permitted location. In such circumstances, the self-supplier should contact their respective list administrator as soon as they are aware of the potential issue, to request guidance.

### **Reporting to Ofgem if you are a self-supplier/producer-trader**

- 4.50 You must declare every quarter whether you are using BSL and/or SFR authorisation to demonstrate compliance, and provide your authorisation number(s) each quarter providing you are still using the fuel(s) for which you registered. You will need to do this in your quarterly periodic data submissions, along with your meter readings. You will see that there is a section on the RHI Register for “Sustainability Information” in your quarterly submissions.
- 4.51 The authorisation number(s) can be found on your registration approval letter from the BSL. The format of authorisation numbers on the BSL is: BSLXXXXXXXX-XXXX where each ‘X’ is a number. For SFR it is the same format but begins with SFR.
- 4.52 You must keep a log book recording all fuel used as part of your ongoing obligations. This includes records of any raw material purchased if you are a producer-trader. This must be provided during an audit or if requested by Ofgem. Please see our guide to keeping fuel records <sup>29</sup>for further advice.

### **Audits**

- 4.53 The list administrators are responsible for carrying out audits of those registered on the lists. For more information on the BSL audit methodology, please see the BSL

---

<sup>29</sup> <https://www.ofgem.gov.uk/publications-and-updates/renewable-heat-incentive-guide-keeping-fuel-records-biomass-1>

Applications and Audit Guidance. <sup>30</sup> For the SFR audit methodology please see the SFR Authorisation and Ongoing Obligations guidance. <sup>31</sup>

### **Biomass and biogas CHP of 1MWe and above, accredited on the Renewables Obligation (RO)**

- 4.54 If you have a CHP installation using solid biomass or biogas with a capacity of 1MWe (this is the electrical capacity, not the thermal capacity) or above, for which you are receiving Renewable Obligation Certificates (ROCs) on the electricity output and which is compliant with the RO sustainability requirements, you do not have to provide separate sustainability information under the RHI. Instead, participants must submit a declaration with each quarterly period submission which states the RO sustainability requirements are being met.
- 4.55 Those able to use this route of compliance are not required to provide an annual sustainability audit report to the RHI as this is already a requirement under the RO.
- 4.56 Each quarter you will be asked to declare whether you have been meeting the RO sustainability criteria. You will see this question in the 'Sustainability Information' section of the RHI Register, along with the section for your meter readings. If during any quarter, any consignment of fuel no longer meets the RO sustainability criteria, the participant will be required to self-report to Ofgem against the RHI sustainability requirements. Please refer to the sustainability self-reporting guidance <sup>32</sup> for further details.
- 4.57 If the annual sustainability audit report submitted to the RO finds that during the previous year, any consignment of fuel used did not meet the sustainability requirements, this may result in RHI payments being affected. Evidence may need to be provided that the fuel(s) in question met the RHI sustainability criteria.

### **Criteria for woodfuel quality**

- 4.58 From 1 April 2022, solid biomass which is wood and is used to generate heat in an accredited RHI installation must meet the **woodfuel quality criteria** outlined below. The RHI regulations defines "**woodfuel**" in the context of the woodfuel quality criteria

<sup>30</sup> <http://biomass-suppliers-list.service.gov.uk/>

<sup>31</sup> <http://sfregister.org/downloadable-guides>

<sup>32</sup> <http://www.ofgem.gov.uk/ndrhi-guidance>

as “woodchip, logs, wood pellets and wood briquettes, regardless of whether the wood will undergo any other process before burning”.

1. **Wood pellets** must meet the EN Plus A1 standard<sup>33</sup>, a subsequent version of that standard or an equivalent approved standard. **This applies from 1 April 2022, except during a temporary suspension period which has now ended (see point 4 below).**
2. **Other woodfuel** must meet:
  - fuel quality standard EN 15234-1 :2011<sup>34</sup>, ISO 9001:2015<sup>35</sup>, ISO 17225-4:2021<sup>36</sup>;
  - a subsequent version of one of those standards; or
  - an equivalent approved standard.
3. **Woodfuel must be certified by the Woodsure Certification Scheme**<sup>37</sup> or an equivalent certification scheme assessed by DESNZ<sup>38</sup> as meeting the standards as outlined above in points 1 or 2. Prior to 31 March 2026, Kiwa Limited were responsible on behalf of DESNZ for the assessment of equivalence to this. The certification scheme must provide assurance of the supply chain of the woodfuel.
4. From 23 November 2022 to 22 November 2023, the requirement for all wood pellets to meet the EN Plus A1 standard, a subsequent version of that standard, or an equivalent approved standard was temporarily suspended. Wood pellets were not required to be certified on the Woodsure Certification scheme during the suspension period. However, following the suspension period, wood pellets needed to once again be certified under the Woodsure Certification scheme.

<sup>33</sup> <https://www.enplus-pellets.eu/en-in/>

<sup>34</sup> Solid biofuels. Fuel quality assurance - General requirements (ISBN 978 0 580 71117 6). Published by the British Standards Institution on 31st March 2011.

<sup>35</sup> <https://www.iso.org/standard/62085.html>

<sup>36</sup> Solid biofuels – Fuel specifications and classes - Part 4: Graded wood chips, ed. 2.0 (ISBN 978 0 539 05763 8). Published by the British Standards Institution on 31st March 2021.

<sup>37</sup> <https://woodsuresure.co.uk/about-woodsuresure/>

<sup>38</sup> DESNZ will lead any required assessment of equivalency, contact [rhi@energysecurity.gov.uk](mailto:rhi@energysecurity.gov.uk)

- 4.59 Participants are required to declare that the wood fuel they have used in their accredited RHI installation meets the wood fuel quality criteria. The declaration is required on a quarterly basis alongside meter readings and sustainability information.
- 4.60 Participants using solid biomass which is waste or is wholly derived from waste in their accredited RHI installation are not required to meet the woodfuel quality criteria set out above.
- 4.61 Participants using wood which does not fall within the definition of “woodfuel” as per the RHI Regulations are not required to meet the woodfuel quality criteria set out above.
- 4.62 From 1 April 2022, participants are able to demonstrate they meet the wood fuel quality criteria each quarter by sourcing wood pellets from the Biomass Suppliers List (BSL). Alternatively, participants who self-report (i.e do not source wood pellets from the BSL), are required to demonstrate they meet the woodfuel quality criteria and the other sustainability requirements.
- 4.63 We expect certification bodies to publish guidance that provides details of how to comply with fuel quality criteria.
- 4.64 Ofgem will only signpost NDRHI participants to organisations that supply fuel compliant with the scheme. Fuel suppliers are therefore required to demonstrate their compliance to their certification bodies e.g. Woodsure.<sup>39</sup>
- 4.65 If you are a self-supplier, producer, trader or producer-trader, your woodfuel must meet the criteria for woodfuel quality as of 1 April 2022 to remain listed on the BSL<sup>40</sup> register (see paragraph 4.58 for details of a now ended, temporary suspension). We strongly recommend you contact Woodsure for further information about demonstrating compliance with these requirements. You can contact Woodsure directly by email at [info@woodsurre.co.uk](mailto:info@woodsurre.co.uk) or call 01684 278 188.
- 4.66 Participants who self-report are required to retain any evidence that demonstrates the relevant consignments of woodfuel they have used comply with the criteria for woodfuel quality (as outlined above at 4.57), in addition to meeting the land and greenhouse gas (GHG) emission limit criteria. This evidence may be requested as part

---

<sup>39</sup> <https://woodsurre.co.uk/fuel-quality-is-coming-to-the-biomass-suppliers-list/>

<sup>40</sup> <https://biomass-suppliers-list.service.gov.uk>

of the Fuel Measurement and Sampling (FMS) review process. It may also be requested at other points in time, for example as part of a site audit.

- 4.67 Such evidence will likely take the form of a certification document or evidence of a valid certification number. In order to reduce review times, when adding a consignment of woodfuel, please provide this evidence alongside your amended FMS questionnaire for review. Additionally, when reviewing an amended FMS, we may request this evidence for pre-existing woodfuel consignments. Please ensure that you obtain this information and evidence for all consignments of woodfuel being used.
- 4.68 Participants who are required to produce an annual sustainability audit report as part of their compliance with the sustainability requirements of the RHI scheme, are required to extend the scope of their annual sustainability audit reports to include information on any woodfuel used in the relevant reporting period, and whether such woodfuel complies with the criteria for woodfuel quality as outlined above.
- 4.69 The requirement to extend the scope of the sustainability audit report does not affect the date by which this report is due or the periods this report must cover. For more information about sustainability audit reports please refer to the Non-Domestic RHI Sustainability Audit Guidance for Participants and Auditors.

### **Overview of ancillary fossil fuel and contamination requirements**

- 4.70 Accredited installations which use solid biomass, solid biomass contained in waste, biogas or produce biomethane for injection are not permitted to use fossil fuel in the installation. There are three exceptions to this, as detailed in the regulations:
- ancillary fuel (small amounts of fossil fuel necessary for the effective operation of the installation) up to a limit specified in the regulations
  - contaminated fuel (where the biomass fuel / waste contains fossil fuel contaminant within the limits specified in the regulations)
  - fossil fuel used where the installation is a CHP system and the eligible heat produced is by eligible combustion units. Other plants on the system may burn fossil fuels but payments will only be made on the proportion of heat from the eligible combustion unit(s).

- 4.71 Please see Table 5 for further details of how these requirements are applied. Other than this, use of fossil fuel in these types of accredited installations would be a breach of a participant's ongoing obligations under the regulations.

**Table 5: Requirements in relation to ancillary fossil fuel and contaminated fuel use<sup>41</sup>**

Technology	Size	Is fossil fuel permitted for ancillary purposes?	Is contamination allowed?	Is ancillary fossil fuel and contamination deducted from payment?	FMSQ required if ancillary fossil fuel used and/or contaminated fuel used?
Solid biomass (except for CHP scenario below)	≤45kWth	×	×	N/A	N/A
Solid biomass (except for CHP scenario below)	>45kWth and <1MWth	✓	✓	×	×
Solid biomass (except for CHP scenario below)	≥1MWth	✓	✓	✓	✓
Biogas - gasification or pyrolysis (except for CHP scenario below)	All sizes	✓	✓	Only contamination deducted	✓
Biogas - anaerobic digestion (except for CHP scenario below)	All sizes	✓	✓	×	×
Solid biomass contained in waste	All	✓	✓	✓	✓
Biomethane - gasification or pyrolysis	All	N/A	✓	Only contamination deducted	✓
Biomethane - anaerobic digestion	All	N/A	✓	×	×
CHP – biomass, biogas or solid biomass contained in waste where only certain combustion units are eligible	All	✓	✓	✓	✓

<sup>41</sup> Please note this does not include cases where feedstock derived from fossil fuel is used in AD or for the injection of biomethane. For further information on the use of feedstock derived from fossil fuel please refer to paragraphs 4.95 – 4.103 below.

- 4.72 All instances of using contaminated fuels or ancillary fuels must be indicated upfront to Ofgem as part of the accreditation process or via submitting a notification<sup>42</sup> if this decision is taken post-accreditation onto the scheme.
- 4.73 It is your responsibility to ensure your plant is permitted to burn these fuel types in accordance with the manufacturer's instructions as well as within the scope of the Regulations. Where shown in Table 5 some installations are required to complete a [Fuel Measurement and Sampling \(FMS\) Questionnaire](#) as part of the accreditation process.
- 4.74 This FMS will need to be maintained and updated where necessary throughout participation on the RHI. There is further information in this chapter for all installation sizes for how and when to report the use of contaminated and/or ancillary fuel use to Ofgem.

### Ancillary fossil fuel

- 4.75 Ancillary fossil fuels can be used by the installation for the following purposes:
- cleansing other fuels from the accredited RHI installation's combustion system prior to using fossil fuel to heat the combustion system to its normal temperature
  - the heating of the accredited RHI installation's combustion system to its normal operating temperature or the maintenance of that temperature
  - ignition of fuels of low or variable calorific value
  - emission control
  - for accredited RHI installations which are CHP, standby generation or the testing of standby generation capacity.<sup>43</sup>
- 4.76 The details above refer to fossil fuel used in the same plant as the biomass (e.g. in the same boiler chamber), rather than the use of fossil fuel in a different boiler. As outlined in Volume 1, chapter 9, section 'Fossil fuelled and dual fuelled biomass plants',

---

<sup>42</sup> This notification should be made as an amendment via your RHI account on the RHI Register. In the first instance, you should send the notification to our RHI amendments email address ([rhi.notification@ofgem.gov.uk](mailto:rhi.notification@ofgem.gov.uk)) with the RHI number in the subject box.

<sup>43</sup> "Standby generation" means the generation of electricity by equipment which is not used frequently or regularly to generate electricity and where all the electricity generated by that equipment is used by the accredited RHI installation.

a fossil fuel boiler is permitted alongside an eligible installation provided it is metered separately and excluded from heat supported by the RHI.

- 4.77 Where the use of fossil fuel for the specified ancillary purposes is required at the plant, up to 10% of the energy content of all the fuels <sup>44</sup>(biomass and fossil) used at the installation during the quarter can be from fossil fuel for ancillary purposes.
- 4.78 The exception to this is where only the heat generated by certain combustion units is eligible for support. In this case the 10% limit of ancillary fossil fuel is in relation to the energy content of all the fuels used in the eligible combustion unit(s), rather than across the whole installation. Where the energy content is above this level, the participant would be in breach of their ongoing obligations.
- 4.79 For details on how plants should demonstrate that they meet this requirement, see the following sections.

### **How to meet ancillary fossil fuels requirements**

#### Ancillary fuel: solid biomass plants of 45kWth and under

- 4.80 As outlined in Volume 1, chapter 1, the regulations do not provide for solid biomass plants of this capacity to use fossil fuels for any purpose, including ancillary fuel, or to use solid biomass contaminated with fossil fuel.

#### Ancillary fuel: solid biomass with installation capacity of between 45kWth – 1MWth and biogas

- 4.81 Subject to the exception in the following paragraph, while installations using either biogas or solid biomass in this capacity range must ensure that the energy content derived from fossil fuels used for ancillary purposes does not exceed 10%<sup>45</sup> there is no requirement to submit documentary evidence of this on a quarterly basis, though this must be declared to Ofgem in your application and evidence must be retained as it may be requested by Ofgem (see following paragraphs).

---

<sup>44</sup> For biogas plants for this particular requirement, it is the energy content of the biogas which is to be compared to the fossil fuel use, rather than of the feedstock

<sup>45</sup> Regulations, Regulation 37

- 4.82 In addition, as the RHI payment calculation takes no account of this ancillary fossil fuel use for these installations, the exact percentage of energy content derived from fossil fuels is not required.
- 4.83 The exception to this approach is for CHP installations where only the heat produced by certain combustion units is eligible. The energy content of the ancillary fossil fuel will be deducted pro-rata from the payment calculation (as a total of the energy content of all fuels) as required by the regulations.
- 4.84 Where participants do use ancillary fossil fuel, they must keep certain documentation for audit purposes to support their claim that the energy content derived from fossil fuels used for ancillary purposes does not exceed 10%. This documentation includes:
- all fossil fuel and biomass invoices and receipts
  - where invoices and receipts do not relate to energy content, a description of the type of fossil fuel purchased
  - a stated efficiency of the boiler, engine or other heat generating equipment (which can then be compared against the fuel purchase documentation).
- 4.85 We will regularly review this documentation on a sample basis.

Ancillary fuel: solid biomass with installation capacity of 1MWth and above and solid biomass contained in waste

- 4.86 Where fossil fuel is used for ancillary purposes, the amount of ancillary fuel used which contributes to metered heat generation will be deducted pro-rata (as a total of the energy content of all fuels) from your RHI payments as required by the regulations. You should have filled out a Fuel Measurement and Sampling Questionnaire (FMSQ)<sup>46</sup> during your accreditation.
- 4.87 Please see the FMS guidance<sup>47</sup> and the worked example in Table 2, which gives guidance on how you may wish to calculate your 'qualifying percentage'.

<sup>46</sup> <https://www.ofgem.gov.uk/publications-and-updates/fuel-measurement-and-sampling-questionnaire>

<sup>47</sup> <http://www.ofgem.gov.uk/ndrhi-guidance>

## Contaminated fuels and feedstocks

- 4.88 Certain plants can use biomass contaminated with fossil fuel (subject to the provisions set out in the regulations, see Table 5 for a summary). For example, wood contaminated with varnishes, glues or paints (which are often derived from fossil fuels) are permitted. This is what the regulations refer to as 'contaminated' fuels or feedstocks. 'Uncontaminated' or '100% biomass' fuels or feedstocks would not contain any fossil fuel or contaminants of this kind.
- 4.89 The regulations<sup>48</sup> do not permit the deliberate addition of fossil fuel to solid biomass with a view to the contaminated fuel being used in an installation. For example, deliberately adding waste fossil fuel oil to virgin wood would mean that wood could not be used in an RHI installation.

### Contaminated fuel: solid biomass plants with installation capacity >45kWth and <1MWth

- 4.90 For solid biomass, the energy content of the contamination must be 10% or under of all the biomass fuels (contaminated or otherwise) used in that quarter to receive payments. This must be recorded as part of your fuel records.
- 4.91 For CHP installations accredited on or after 28 May 2014 where only the heat generated by certain combustion units is eligible for support, the 10% limit applies to contamination of the fuels used in the eligible combustion unit(s).
- 4.92 As the 10% or under requirement applies to the quarterly period, individual deliveries of fuels can be above 10% contamination by energy content. So a contaminated wood fuel above 10% contamination could be used, as long as the total contamination for all of the fuel used in the quarter was under 10% percent.

### Contaminated fuel: solid biomass plants with installation capacity of 1MWth and above

- 4.93 These plants must comply with the requirements as outlined for solid biomass plants with installation capacity above 45kWth and below 1MWth using contaminated fuel.

---

<sup>48</sup> Regulation 71(1)

- 4.94 The amount of fossil fuel contamination in the solid biomass fuel used which contributes to metered heat generation will be deducted pro-rata (as a total of the energy content of all fuels) from your RHI payments as required by the regulations. You should have filled out a Fuel Measurement and Sampling Questionnaire (FMSQ)<sup>49</sup>during your accreditation process.
- 4.95 Please see the FMS guidance<sup>50</sup>and the worked example in Table 2, which gives guidance on how you may wish to calculate your 'qualifying percentage'.
- 4.96 Where an applicant plans to use a contaminated fuel at this capacity range of boiler, they should keep evidence to support their claim that the energy content of the fossil fuel contaminants will not be above 10% of the total energy content of the fuels used in a given quarter. This documentation includes:
- a boiler warranty or boiler fuel specification clearly showing that fuels above 10% contamination by energy content are not to be used in the boiler (although we note that this documentation would not generally be sufficient, and we would expect participants to support this with further evidence)
  - a fuel supply contract or purchase specification clearly showing that the energy content of the contamination will not be above 10% of the fuel
  - initial sampling demonstrating that the energy content of the contamination is not likely to be above 10% of the fuel. For further information on sampling, please see the FMS Guidance. We will regularly review this documentation on a sample basis.

### Contaminated fuel: solid biomass contained in waste plants

- 4.97 For plants burning waste, the proportion of solid biomass in the waste must be a minimum of 10% (i.e. contamination contained within that waste must be less than 90%) in each quarterly period.

<sup>49</sup> <https://www.ofgem.gov.uk/publications-and-updates/fuel-measurement-and-sampling-questionnaire>

<sup>50</sup> <http://www.ofgem.gov.uk/ndrhi-guidance>

- 4.98 For CHP installations, accredited on or after 28 May 2014 where only the heat generated by certain combustion units is eligible for support, this limit applies to the waste being burnt in the eligible combustion unit(s).
- 4.99 Where municipal waste is used the regulations set out specific provisions for demonstrating biomass content <sup>51</sup> Under the regulations we may accept as sufficient evidence the production by you of data from, for example, a waste disposal or collection authority which demonstrates the proportion of waste that is fossil fuel is unlikely to exceed 50% Evidence that the waste has not been subject to processes to increase that proportion would also be needed. However, we may also request that samples are analysed and the results of that analysis provided to us. See Chapter 2 of the FMS Guidance for further details.

### **Fossil Fuel use in anaerobic digestion (AD)**

- 4.100 As of 1 April 2021, participants combusting biogas produced by AD, or injecting biomethane produced from biogas made by AD, are able to use feedstock derived from fossil fuel, as long as the contribution of the fossil fuel (that forms part of the feedstock) to the energy content of the biogas does not exceed 10%.
- 4.101 The methodology you propose for determining the percentage contribution of the fossil fuel energy content of the biogas, in a quarterly period, must be agreed with Ofgem via the [Fuel, Measurement and Sampling \(FMS\)](#) procedures.
- 4.102 The percentage of the energy content of biogas from feedstock derived from fossil fuel is the energy content of the fossil fuel expressed as a percentage of the energy content of the biogas used in that quarterly period to generate heat or produce biomethane.
- 4.103 For avoidance of doubt, we do not consider feedstock derived from fossil fuel to be the same as solid biomass contaminated with fossil fuel.<sup>52</sup> For example, we are aware glycerine is a feedstock that can contain a proportion of fossil fuel due to the nature of the interactions that occur between the chemicals present throughout the production process. It is this type of feedstock which we consider to be feedstock derived from fossil fuel.

---

<sup>51</sup> Regulations, Part 4, Regulation 37(7)

<sup>52</sup> Please refer, for example, to regulations 38(2), 39(2), 42(4) for further information the rules on the use of solid biomass contaminated with fossil fuel under the RHI scheme.

- 4.104 RHI payments will not be issued for any heat or biomethane derived from fossil fuel. Where a participant uses feedstock derived from fossil fuel,<sup>53</sup> the periodic support payment calculated<sup>54</sup> must be reduced on a pro rata basis to reflect the percentage of the energy content of biogas from the fossil fuel component of the feedstock used by the participant in the relevant quarterly period.
- 4.105 In cases where the contribution of the fossil fuel to the energy content of the biogas is below 10%, Ofgem will reduce the RHI payments in line with the percentage contribution of the fossil fuel.
- 4.106 Where the contribution of the fossil fuel to the energy content of the biogas exceeds 10%, Ofgem may take compliance action (if relevant) to recover payments made in relation to biogas produced by fossil fuel. It is important to note, as previously stated, RHI payments will not be issued for any heat or biomethane derived from fossil fuel.
- 4.107 Please note, it is the responsibility of the participant to retain and produce the evidence necessary to demonstrate the percentage of the energy content of biogas from feedstock derived from fossil fuel, is accurate. The procedures to measure contamination must be captured in the agreed FMS procedures. Please see guidance [Fuel Measurement and Sampling \(FMS\)](#) for further detail.
- 4.108 In some cases we may require the participant to arrange for samples of the fuel used (or to be used), or of any gas or other substance produced as the result of the use of such fuel, to be taken and analysed in a manner specified by us and for the results of that analysis to be provided to us in such form as we require. Participants must fill out the relevant sections of the Fuel Measurement and Sampling (FMS) Questionnaire to ensure compliance with the fuel contamination criteria.

### **Contamination limits for gasification and pyrolysis plants**

- 4.109 The solid biomass feedstock would need to meet the 10% or under contamination by energy content criteria explained above paragraphs 4.70 – 4.74.

---

<sup>53</sup> In accordance with regulation 40A.

<sup>54</sup> In accordance with regulation 66 or 73.

- 4.110 The waste feedstock would need to meet the minimum of 10% biomass criteria as explained in paragraph 4.77.
- 4.111 Participants will have to fill out the appropriate sections of the Fuel Measurement and Sampling (FMS) Questionnaire. This is to ensure compliance with the contamination criteria and because the tariff payment is 'pro-rated' to deduct the fossil fuel contamination in the feedstock.
- 4.112 Where municipal waste is used as a feedstock, the criteria for assessing whether contamination is likely to exceed 50% also applies – see paragraph 4.80.

### **CHP systems**

- 4.113 For CHP systems where only the heat produced by certain combustion units is eligible for support, other combustion units on the system may burn any type of fuel and there is no limit on this amount. The proportion of heat used for eligible purposes that will receive RHI payments will be based on the proportion of the energy content of the fuel used in the eligible combustion units relative to the energy content used in all eligible and ineligible combustion units. Records must be kept of the fuel used in every combustion unit which forms part of the CHP system and provided this to Ofgem if requested.
- 4.114 The fuel contamination and ancillary fossil fuel rules outlined in the previous sections apply to the combustion units which are eligible for support. Where the proportion of contamination of ancillary fossil fuel is above 10% of the energy content of the fuels used within the eligible combustion unit(s), the participant would be in breach of their ongoing obligations.
- 4.115 Each combustion unit that is eligible for support must only use one source of energy – either solid biomass, solid biomass contained in waste or biogas. A combination of energy sources cannot be used within one combustion unit.

**Calculating the ‘qualifying percentage’ for solid biomass installations with installation capacity of 1MWth and above**

- 4.116 For this scale of plant, when contaminated biomass is used, the energy content of that contamination must be measured (as a percentage of the energy content of the fuels used) to generate heat. The biomass used in a quarterly period cannot contain more than 10% contamination by energy content.
- 4.117 As with ancillary fossil fuel use, the regulations require that we use the percentage of fossil fuel contamination to work out the appropriate deduction from the RHI payment. Please refer to the calculation example provided in Table 6 below.
- 4.118 For details on how the energy content of the contamination can be measured, please see Volume 1, chapter 12.
- 4.119 The following is a worked example of how the ‘renewable’ or ‘qualifying’ percentage is calculated where ancillary and contaminated fuels are used.

Table 6: Calculation of qualifying percentage

<b>Fuel</b>	<b>Amount (Tonnes)</b>	<b>GCV (Mega joules (MJ) per tonne)</b>	<b>Energy content (MJ)</b>	<b>Contamination percentage</b>	<b>Energy content of contamination (MJ)</b>
Biomass fuel	20	20	400	5%	20
Fossil fuel (ancillary)	1	30	30	N/A	N/A
Total	21		430		

The energy content of the biomass fuel is 400 MJ, of which 20 MJ is fossil fuel contamination (i.e. 380 MJ are ‘renewable’). A further 30 MJ of ancillary fossil fuel is used by the plant in the period.

Of the total of 430 MJ of fuels used in the period, 380 MJ were from biomass fuels, and 50 MJ from fossil (in the form of contamination or ancillary purposes). The qualifying percentage in this case would therefore be 88% (380/430).

- 4.120 As can be seen from the example given, the limit of 10% contamination and ancillary fuel allowances are exclusive of each other – up to 10% of each are allowed.

## Definition of 'energy content'

4.121 Energy content', means the amount of energy contained within a fuel or feedstock, specifically, the regulations refer to the substance's "gross calorific value (GCV) within the meaning of British Standard BS 7420:1991". " For example, we may need to know the number of megajoules (MJ) of energy in a given quantity (e.g. a tonne) of fuel, or the percentage of the energy content of a fuel (or combination of fuels) that is from a fossil or biomass source. NB. For those self-reporting against the sustainability requirements, there is a different definition of 'energy content' for the purpose of greenhouse gas calculations. The sustainability self-reporting guidance provides further information.

## Peat ineligibility

4.122 Peat does not count as biomass so cannot be used either as a feedstock for the production of biogas or as a fuel itself.

## Eligible feedstocks in anaerobic digestion

4.123 When biogas produced by AD is used to generate heat or to produce biomethane, that biogas is only eligible when certain 'feedstocks' have been used in its production. Feedstocks are the material (e.g. slurry, sewage or food waste) that is converted into the biogas. The eligible feedstocks are:

- solid biomass
- solid waste
- liquid waste<sup>55</sup>.

4.124 Please note installations which generate heat from landfill gas or participants producing biomethane which is derived from the conversion of landfill gas are not eligible under the RHI.

---

<sup>55</sup> "waste" has the meaning given in Article 3(1) of Directive 2008/98/EC of the European Parliament and of the Council on waste(5) and includes excreta produced by animals

## Gasification and pyrolysis

4.125 When biogas produced by gasification or pyrolysis is used to generate heat or to produce biomethane, that biogas is only eligible when the feedstocks used to create the gas are solid biomass or waste.

### Feedstock requirements

4.126 All installations producing biogas from anaerobic digestion (AD) with a date of accreditation on or after 22 May 2018, and all biomethane producers injecting biomethane derived from biogas that was produced by AD with a date of registration on or after 22 May 2018, are subject to feedstock requirements.

4.127 Any participants producing biogas from AD and those injecting biomethane derived from biogas that was produced by AD who add capacity to their accredited biogas installation or registered biomethane plant on or after 22 May 2018, are also subject to feedstock requirements.

4.128 Feedstock requirements place an annual limit on the RHI payments issued for eligible heat generated, or biomethane produced, from biogas produced by AD where more than 50% of the total biogas yield (by energy content) is derived from consignments of fuel which are not classified as wastes or residues. The limitation of RHI payments for an installation's or plant's payment year will be calculated by reference to the biogas yield (by energy content) that is derived from consignments of fuel which are not classified as wastes or residues.

4.129 An example of the way in which feedstock requirements will work in practice is given below:

- Ofgem is required to calculate the value to which periodic support payments for a payment year must be reduced in instances where, for any payment year, less than 50% of the total biogas yield is derived from waste or residue. The following calculation will be used by Ofgem:

Reconciliation of periodic support payment = **A** × (1.5 - **B**)

- **Where:**

**A** is the total periodic support payment for biogas or biomethane for that payment year <sup>56</sup> (prior to any deduction being calculated)

**B** is the proportion of the total biogas yield for that payment year which is not derived from waste or residue, expressed as a decimal and rounded to four decimal places

**1.5** is the constant used to calculate the value >50%, that is then applied to determine the overpayment value.

#### 4.130 Worked example:

- In a given RHI payment year, an accredited biogas installation generates a certain volume of biogas via anaerobic digestion. All of this biogas was combusted to generate heat that was used for eligible purposes. The installation received £10,000 of periodic support payment for that reporting year.
- 70% of this biogas (by energy content) was derived from consignments of fuel which are **not** classified as wastes or residues. The remaining 30% was derived from consignments of fuel which are classified as wastes and/or residues.
- Therefore, with reference to the formula outlined above, the value of '**A**' is 10,000 and '**B**' is 0.7000
- Using these values, the amount to which periodic support payments for a payment year must be reduced to are as follows:
 
$$= 10000 \times (1.5 - 0.7)$$

$$= 10000 \times 0.8$$

$$= \text{£}8,000$$
- In this example, £2,000 of periodic support payments would need to be recovered by Ofgem. More detail on how this amount would be recovered can be found later in this chapter.
- If the installation had generated all or more than 50% of its biogas (by energy content) from consignments of fuel which are classified as wastes or residues, it would have been entitled to 100% of that year's RHI payments, subject to compliance with all other ongoing obligations of the scheme. In that scenario, no reconciliation calculations of periodic support payments would have been required, and hence the formula  $A * (1.5 - B)$  would not have been used.

<sup>56</sup> Calculated in accordance with regulation 66(2)(b), 67 or 73

- 4.131 Participants subject to feedstock requirements are required to report on the proportion of biogas (by energy content) derived from consignments of fuel that are not classified as wastes or residues on an annual basis (see below).
- 4.132 The classification of consignments are agreed as part of the review of participants' Fuel Measurement and Sampling (FMS) procedures. For further information on FMS procedures please refer to the [Non-Domestic RHI Guidance on FMS](#).
- 4.133 Participants subject to feedstock requirements are required to report their proportions on an annual basis, no later than three months after the anniversary of their date of accreditation (or registration for biomethane producers). These annual submissions must cover the period between the date of accreditation (or registration) and the anniversary of the date of accreditation (or registration).
- 4.134 Although it is the responsibility of the participant to be aware of the information they must submit and the deadlines associated with these submissions, Ofgem will endeavour to make contact with affected participants to remind of the information they are required to submit and the deadlines for doing so.
- 4.135 An example of the deadline for feedstock requirements and the period a submission must cover is given below:
- Technology type: Biogas installation (producing biogas from anaerobic digestion)
  - Date accreditation: 03 December 2018
  - Anniversary of date of accreditation: 03 December 2019
  - Submission of feedstock requirement information due by deadline of: 03 March 2020
  - Period feedstock requirement information must cover: 03 December 2018 – 2 December 2019
- 4.136 For the avoidance of doubt, in the example given above, 'feedstock requirement information' means the proportion of biogas (by energy content) derived from consignments of fuels that are not classified as wastes or residues.

## Recovering payments

- 4.137 If the use of consignments of fuel which are not classified as wastes or residues exceeds 50% of the total biogas yield (by energy content) in a payment year, all overpayments will be offset against future RHI payments from the first quarter of the following payment year, until such point that payments have been fully recovered.
- 4.138 Where the payment year in which overpayment is due is the participant's final payment year, the participant will be required to repay the amount by which the RHI payments for that payment year have been reduced.
- 4.139 An example of the typical way in which overpayments will be recovered is provided below:
- Date of accreditation:
    - 09 May 2017
  - Anniversary of date of accreditation:
    - 09 May 2018
  - Submission of feedstock requirement information due:
    - 09 August 2018
  - Period feedstock requirement information must cover (i.e. first payment year):
    - 09 May 2017 – 08 May 2018
  - Value of RHI payments received in first payment year:
    - £10,000.00
  - Proportion of biogas (by energy content) derived from consignment of fuel which are not classified as wastes or residues:
    - 85%
  - Percentage of RHI payments that will to be offset in the following payment year:
    - 35% (i.e. £3,500.00)
  - Value of RHI payments due in the first quarter of the following payment year (prior to any payments being offset):
    - £3,000.00
  - Actual RHI payments that will be issued for the first quarter of the following payment year (after payments have been offset):
    - £0

- Value of RHI payments due in the second quarter of the following payment year (prior to any payments being offset):
  - £2,000.00
- Actual RHI payments that will be issued for the second quarter of the following payment year (after payments have been offset):
  - £1,500.00

### **Classification of fuel for all types of biomass and biogas**

- 4.140 The processes and criteria used to classify consignments of fuel will be the same as those used to classify consignments of fuel under the RHI sustainability requirements. For further information on the RHI sustainability requirements please refer to the [Non-Domestic RHI Sustainability Self-Reporting Guidance](#).
- 4.141 All feedstocks that may be classified as waste should be considered carefully by operators to ensure that the waste hierarchy<sup>57</sup> has been applied and alternative markets have been considered before using them to generate energy.
- 4.142 The manipulation or modification of the state or condition of a substance or object in an attempt to make it fit the definition of a waste will not be considered a waste for the purposes of the RHI.
- 4.143 Co-products will not be considered residues in cases where they have been deliberately diverted from viable alternative uses (such as use as animal feed or other products). For example, anaerobic digestion should not process food which could have otherwise been used as animal feed or redistributed for human consumption.

### **The Biogas Apportioning Tool**

- 4.144 It is up to the participant to determine which tool they will use to calculate their feedstock requirement information (i.e. proportions), the RHI regulations do not provide instruction to support participants in calculating the proportion of biogas (by energy content) derived from consignments of fuel which are not classified as wastes or residues.

---

<sup>57</sup> [https://www.gov.uk/government/uploads/system/uploads/attachment\\_data/file/69403/pb13530-waste-hierarchy-guidance.pdf](https://www.gov.uk/government/uploads/system/uploads/attachment_data/file/69403/pb13530-waste-hierarchy-guidance.pdf)

- 4.145 Ofgem’s Biogas Apportioning Tool is available to download from the Ofgem website <sup>58</sup>. This tool is designed to facilitate the calculation of the proportion of biogas (by energy content) derived from consignments of fuel which are not classified as wastes or residues.
- 4.146 The Biogas Apportioning Tool calculates the theoretical contribution of methane from each consignment of fuel by per cent and uses this percentage contribution to determine the energy contribution from each consignment of fuel.
- 4.147 Other IT-based tools are available which a participant can seek to use to calculate their proportions of biogas (by energy content) derived from consignments of feedstock that are not classified as wastes or residues. Alternatively, participants can create their own tool.
- 4.148 If a participant wishes to create their own tool or use a tool other than Ofgem’s Biogas Apportioning Tool, the onus is on them to ensure – and be able to demonstrate to Ofgem - that the tool they have used meets the requirements set out in the RHI regulations.

### **Submitting feedstock requirement information**

- 4.149 Participants subject to feedstock requirements must submit their annual proportion of biogas (by energy content), derived from consignments of feedstocks that are not classified as wastes or residues, that is used to generate eligible heat or produce biomethane for injection, via the RHI register. Guidance on how to make this submission is provided by Ofgem.
- 4.150 In advance of further details on how to make your submission, we recommend that you:
- Clearly understand the date on which you are required to submit your feedstock requirements information.
  - Calculate the proportion of biogas (by energy content) derived from consignments of feedstock that are not classified as wastes or residues.

---

<sup>58</sup><https://www.ofgem.gov.uk/publications-and-updates/non-domestic-rhi-and-fit-biogas-and-biomethane-apportioning-tool>

- Collect evidence that supports the way in which you have calculated your feedstock requirements information.

### Additional requirements

- 4.151 Installations producing biogas from AD with a capacity equal to or greater than 1MWth, and all biomethane producers injecting biomethane derived from biogas that was produced by anaerobic digestion, will be required to extend the scope of their annual sustainability audit reports to include information (including calculations and supporting evidence) relating to the feedstock requirements.
- 4.152 The requirement to extend the scope of the sustainability audit report will not affect the date by which this report is due or the periods this report must cover. For more information about sustainability audit reports please refer to the [Non-Domestic RHI Sustainability Audit Guidance for Participants and Auditors](#).
- 4.153 Auditing requirements for AD installations with a capacity below 1MWth have not been introduced. However, if Ofgem or DESNZ become aware of non-compliance in relation to the misreporting of waste, residues or crops, measures will be introduced as necessary to address such non-compliances, including potential audits.

### Compliance

- 4.154 Participants subject to feedstock requirements are required to submit their proportions on an annual basis, no later than three months after the anniversary of their date of accreditation (or registration for biomethane producers).
- 4.155 Where feedstock requirement information is not provided within the relevant deadline or is provided but is incomplete, inaccurate or unsatisfactory, Ofgem may withhold RHI payments until adequate information has been provided by the participant. Where necessary, Ofgem may need to take compliance action which may result in permanently withholding RHI payments.
- 4.156 For the avoidance of doubt, 'feedstock requirement information' means the annual submission of the proportion of biogas (by energy content) derived from consignments of feedstock that are not classified as wastes or residues. Where necessary, it also

means an annual sustainability audit report (applicable to installations with a capacity > 1MW) that includes information (including calculations and supporting evidence) relating to the annual submission of biogas proportions.

## 5. Ongoing obligations for heat pumps

This chapter covers additional ongoing obligations for heat pump owners, including information on Seasonal Performance Factor.

### Heat pumps

- 5.1 For participants who submitted their heat pump application from 28 May 2014 and have a capacity of over 45kWth, the installation design and supporting calculations for the design Seasonal Performance Factor (SPF) must be retained and provided to Ofgem when requested.
- 5.2 For participants who submitted their heat pump application from 28 May 2014, and whose heat pump is capable of cooling, the details of the calculation of the design heat load must be retained and provided to Ofgem when requested.
- 5.3 In addition to the output data, all heat pump installations (ground source, water source and air to water<sup>59</sup>) with an application submitted on or after 28 May 2014 will need to provide quarterly electricity meter readings so that the seasonal performance factor (SPF) can be calculated. Readings must be provided in kWhth. These readings will not affect payments and are for monitoring purposes only.
- 5.4 All ground source and water source heat pumps with an application submitted on or after 28 May 2014 and are capable of simultaneous heating and cooling (where heat extracted during the cooling process is used directly for heating elsewhere on the system, by-passing the ground loop) will need to provide quarterly meter readings of the heat drawn from the ground. Readings must be provided in kWhth. These readings will not affect payments and are for monitoring purposes only.
- 5.5 Note as set out in Volume 1, chapter 8, that air to water heat pumps must not be designed to provide cooling.

---

<sup>59</sup> The Regulations refer to this technology as "air source heat pump". However, since liquid or steam must be the medium for delivering heat, it is only air to water heat pumps which are eligible, not air to air

## Heat pumps on a shared ground loop (SGL)

### Participants with shared ground loops (accredited on or after 22 May 2018)

Metered/ deemed	Heat pumps all <b>deemed</b> (domestic purposes, i.e. a single heat pump heating a single domestic premise)	Some metered, some deemed heat pumps (mixed use)	Heat pumps all <b>metered</b> (non-domestic purposes)
How payments made	Deemed payments go automatically into chosen bank account every quarter (assuming other obligations met).	Meter readings must be submitted for the non-domestic heat pumps. Once this has been completed and passed through the review process, metered and deemed payments will then be made for the for the quarter (assuming other obligations met).	Meter readings must be submitted for all heat pumps. Payments will be made for the quarter once the metered submission has passed through review processes

### Modified capacity for shared ground loops

- 5.6 From the 1st April 2021, participants who have an accredited shared ground loop system (SGL) or a ground source heat pump are able to modify the capacity of their installation through the commissioning of additional ground source heat pumps. Any such modification is permissible only if the additional ground source heat pumps are to be commissioned as part of a SGL and will meet the eligibility requirements of SGLs. The deadline to submit a **plan to modify** capacity was the 31 March 2023. See below for further guidance on what constitutes a '**plan to modify**'.
- 5.7 It is important to note that the regulations specify that heat pumps added via the modified capacity route must only provide space and/or water heating and not process heating.
- 5.8 In cases where an existing heat pump provides process heating, it is the responsibility of the participant to establish metering arrangements that will enable Ofgem to

quantify the heat produced by the additional heat pump(s) that has been delivered to any process heating. This is in order to accurately calculate RHI payments.

- 5.9 If a separate budget allocation for modified capacity is set by the Government, Ofgem will assess any plan to modify capacity against the available budget. Ofgem will consider plans to modify capacity in the order in which Ofgem receives notification of modification. Where there is no available budget i.e. the estimated total modified capacity would exceed the budget allocation for the year, Ofgem will not be able to approve a plan to modify capacity.
- 5.10 As outlined by the government<sup>60</sup>, the mechanism allowing the modification of capacity was designed to aid installations which are looking to connect heat pumps in phases (primarily to multiple domestic dwellings). As such, the government is keen to ensure that those utilising the modified capacity provisions are projects that are providing space and water heating to multiple premises utilising a shared ground array that may wish to attach additional heat pumps to a ground array after an initial accreditation has been made. These circumstances may include, but are not limited to, social housing projects and other housing developments that are being built or are replacing an existing heating system in phases.
- 5.11 Participants who wish to modify the capacity of their installation must notify Ofgem of their intention to do so on or before 31 March 2023. Please note: TG2, TG3 and extension application applicants who have applied for accreditation by 31 March 2023, will also be able to submit a plan to modify capacity of their plant by 31 March 2023. Their plan will be held by Ofgem and if their plant is accredited, Ofgem will subsequently review the plan to modify and write to inform applicants of its decision. Please note that no modifications to your plant should be carried out until accreditation is granted and your plan to modify capacity has been approved. Participants should submit the details on a plan to modify capacity form, [here](#). The following information will be required as part of a complete “**plan to modify capacity**”.
- Whether the participant plans to modify the installation capacity once or twice. Participants may not modify the installation capacity of an accredited RHI installation more than twice during the tariff lifetime for that installation.
  - What the total intended installation capacity of the accredited RHI installation following the modification(s) is.

---

<sup>60</sup>[https://assets.publishing.service.gov.uk/government/uploads/system/uploads/attachment\\_data/file/952233/ndrhi-ensuring-sustainable-scheme-government-response.pdf](https://assets.publishing.service.gov.uk/government/uploads/system/uploads/attachment_data/file/952233/ndrhi-ensuring-sustainable-scheme-government-response.pdf)

- The expected commissioning date or dates of the additional ground source heat pump or pumps to be added as part of a modification, and
- The amount of heat (in kWhth) which the participant expects each additional ground source heat pump to generate each year for space and/or water heating.

### 5.12 Participants will be required to support their plan to modify capacity with the following:

- Details of the process by which the participant proposes to modify the installation capacity of the accredited RHI installation. This may include, but is not limited to, information such as:
  - a description of the timelines for the modification;
  - installation and commissioning of the additional heat pump(s);
  - contractual arrangements for the installation and commissioning of the additional heat pump(s);
  - number of heat pumps being added to the plant; and
  - if located outside of the building, details of how heat is transferred from the heat pump(s) to the building.
- A declaration that the information provided is accurate to the best of the participant's knowledge and belief, and
- A declaration that the participant will be the owner, or one of the owners, of each additional heat pump, and/or
- Evidence that where the participant is **not** the owner of an additional ground source heat pump on the system, the participant is still able to meet their ongoing obligations by ensuring Ofgem are informed of any material changes to each additional heat pump and that Ofgem can gain access for audit and compliance purposes. Whilst not an exhaustive list, examples of such evidence could include an agreement clause within the property's deed of sale, or a signed agreement between parties.
- Evidence to demonstrate that the shared ground loop system is of an appropriate size for the total intended installation capacity, this includes, but is not limited to, thermal ground modelling assessments, ground loop sizing calculations (e.g., System design according to MIS 3005), documentary evidence of ground

loop size (e.g. purchase invoices), site heat load calculations, and Seasonal Performance Factor (SPF) calculations

- Any information specified under Schedule 2 (Information required for accreditation or registration) of the RHI regulations that Ofgem may request

5.13 In some cases, Ofgem may require further information which may include, but is not limited to, the following:

- Further information specified in Schedule 2 of the regulations
- Evidence of any necessary planning permission for additional connecting heat pumps
- Heat loss assessments
- Plans of modification including the intended total capacity
- Environmental permits, including those related to water abstraction
- Technical documentation contemporaneous with the installation of the original heat pump system, such as design statements, site plans, schematics, commissioning reports
- A declaration regarding the installation capacity of heat pumps must be provided
- All heat pumps are to have a coefficient of performance (COP) of at least 2.9. You must provide details of the test conditions under which the stated COP has been determined, including reference to any industry standard or guidance which has been adhered to
- Evidence of any heat loss calculation used in determining the increase in the amount of heat (in kWhth) to be generated by the accredited RHI installation for space or water heating
- Evidence to demonstrate the shared ground loop system will be appropriately sized

5.14 Once Ofgem has received and reviewed a participant's plan to modify capacity, Ofgem will notify the participant whether their plan has been approved or rejected. Where it is rejected, Ofgem will provide the reason(s) for this rejection. Where the plan is accepted, Ofgem will specify, among other things, the tariff that will apply for the shared ground loop system.

- 5.15 Please note that a participant must not notify Ofgem of any further plan to modify capacity in relation to the same accredited RHI installation without first withdrawing the original plan to modify capacity.
- 5.16 A participant, who has had their plan to modify capacity approved by Ofgem, must notify Ofgem within 28 days after modifying the installation capacity of an accredited RHI installation. This notice must contain:
- The commissioning date or expected commissioning date for each ground source heat pump added as part of the modification;
  - The installation capacity of the accredited RHI installation following the modification (“new installation capacity”);
  - Evidence that the new installation capacity does not exceed the intended installation capacity as stated in the participant’s original “plan to modify capacity” previously submitted to, and approved by, Ofgem;
  - Evidence of any heat loss calculation used in determining the increase in the amount of heat (in kWth) generated by the accredited RHI installation for space and/or water heating.
- 5.17 On receipt of this notice, Ofgem may request additional information (within a 4-week deadline starting from the of the request) in order to be satisfied that, following a modification:
- The accredited RHI installation continues to meet the eligibility criteria;
  - The new installation capacity does not exceed the total intended installation capacity;
  - There has not been a material change in circumstances such that, had the plan to modify capacity been approved after the change, it would have been rejected.
- 5.18 Once satisfied of the above, Ofgem will approve the modification of capacity of the accredited RHI installation. Periodic support payments, taking account of the eligible heat generated by additional ground source heat pump(s), will be calculated from the date on which the last ground source heat pump added as part of the modification was commissioned. Where, as a result of the modification, there is a change in the tariff category, the new tariff category will apply.

5.19 Please note the following points:

- A participant may not modify the installation capacity of their accredited RHI installation more than twice during the tariff lifetime for that installation.
- The modification of their capacity will not affect their tariff end date or initial tariff lifetime.
- The modification of an accredited ground source heat pump or shared ground loop system will not alter the tariff end date or the tariff lifetime of the accredited RHI installation.
- In calculating the tariff, “initial heat” must be determined taking into account the installed peak heat output capacity of the ground source heat pump or pumps added as part of the modification.

## 6. Tariffs and periodic support payments

This chapter provides information on how your tariff and periodic support payments will be calculated, and how periodic support payments will be made.

### Periodic support payments

- 6.1 RHI support is provided to participants in the form of quarterly periodic support payments (referred to as payments throughout this document). These will be made over a number of years rather than as a single upfront payment. Payments will accrue from the date of accreditation of an installation, or registration date for biomethane producers, and will be paid for 20 years.
- 6.2 The tariff levels for the different eligible technologies and the formulae to determine the payments have been set by the Government in the RHI regulations.
- 6.3 Ofgem is responsible for making payments to RHI participants based on the payment calculations set out in those regulations.

### Tariff Indexation

- 6.4 Once you are accredited under the RHI, a tariff level will be assigned to your installation based on the technology and size of the installation. This tariff will be adjusted in line with the relevant inflation rate for every period starting on 1 April and ending on 31 March.
- 6.5 The tariff for your installation will be adjusted by the percentage increase or decrease in the relevant indexation for the previous calendar year (the resulting figure being rounded to the nearest tenth of a penny, with any twentieth of a penny being rounded upwards). A table of RHI tariffs is updated and published on the RHI website<sup>61</sup> annually, with the adjusted rates beginning on 1 April and ending on 31 March of the following year.

---

<sup>61</sup> <https://www.ofgem.gov.uk/environmental-programmes/non-domestic-renewable-heat-incentive-rhi/tariffs-apply-non-domestic-rhi-great-britain>

### **Index-linking of tariffs**

- 6.6 The tariff for your installation will be adjusted by the percentage increase or decrease in the UK Retail Price Index (RPI) (or Consumer Price Index (CPI) for tariffs from 1 April 2016) for the previous calendar year (the resulting figure being rounded to the nearest tenth of a penny, with any twentieth of a penny being rounded upwards). A table of RHI tariffs is updated and published annually, with the adjusted rates beginning on 1 April and ending on 31 March of the following year.
- 6.7 Where your quarterly period falls over two applicable tariff years (with part of the period falling before the price index adjustment and part after the adjustment) then your quarterly payment will be calculated on a pro rata basis. Your payment will be calculated based on the number of days before and after the price index adjustment on 1 April, and the appropriate tariffs which apply before and after that adjustment.

### **Tariff indexation from 1 April 2016**

- 6.8 For installations with tariff start dates prior to 1 April 2016, the tariff will be adjusted according to the RPI. Those installations with tariff start dates on or after 1 April 2016 will be adjusted with the percentage increase or decrease in the CPI.

### **Additional capacity**

- 6.9 The tariffs you receive could also be affected if you have added additional RHI capacity to an installation or biomethane production plant. This will be dependent on the date of accreditation of your original installation when it was first commissioned and when the additional RHI capacity was first commissioned. Please see chapter 10 for further information on the impact that additional RHI capacity could have on your tariff.

### **How payments are calculated**

- 6.10 Payments for installations are calculated by multiplying the applicable tariff(s) by the Eligible Heat Output (EHO) generated in the relevant quarterly period. Payments for biomethane producers are based on the eligible volume of biomethane produced for injection in the period.

- 6.11 For the majority of participants, the EHO and payment amount is calculated by the RHI Register. As part of the application approval process we set up the appropriate formula in the system based on the installation's system type and metering arrangements. This allows the system to calculate the heat output data including the EHO and payment amount from your periodic data submission. We will advise applicants for whom this does not apply as part of the application review process.
- 6.12 The metering classification of your installation will determine the way in which the EHO generated by your installation (or the amount of biomethane you have produced) is calculated. Each installation is classed as 'standard' or 'multiple' for metering purposes<sup>62</sup>:
- installations accredited on or after 24 September 2013 are classed as 'standard' or 'multiple'
- 6.13 Please see Volume 1, chapter 13 for further details on the classification of standard and multiple.
- 6.14 Your classification determines what 'quantities' you have to measure in order for us to be able to calculate your EHO.
- 6.15 If you have a 'standard' system that has no ineligible heat uses, you can determine your EHO by obtaining a measure of:
- **Heat Generated By your RHI Installation (HGBI)**
- 6.16 If you have a 'standard' system that has no ineligible heat generating plants, you can determine your EHO by obtaining a measure of:
- **Heat Used by Eligible Purposes on the system (HUEP)**

---

<sup>62</sup> Please note that as of 1st April 2021, the 'simple' and 'complex' classifications were removed from the scheme. As such, any installation that was previously classified as a 'simple' will be considered 'standard' as of 1st April 2021 and any system classified as 'complex' will be considered 'multiple' as of 1st April 2021.

- 6.17 If you have a standard system that has no ineligible heat uses or ineligible heat generation, you can determine your EHO by obtaining a measure of either HGBI or **HUEP**.
- 6.18 The metering arrangements of your installation will determine whether you use HGBI or **HUEP** as your EHO. The EHO can then be multiplied by the applicable tariff to calculate your RHI periodic support payment. The RHI Register will perform these calculations once supplied with the relevant meter readings.
- 6.19 If you have a 'multiple' system with ineligible heat uses or ineligible heat generating plants, you will need to obtain three different quantities in order to calculate your EHO. Two of the three quantities will always be:
- **H**eat **G**enerated **B**y your RHI **I**nstallation (HGBI) and
  - **H**eat **U**sed by **E**ligible **P**urposes on the system (HUEP)

This means both your RHI accredited heat generating plant and your eligible heat uses will need to be metered. The third quantity you need to determine your EHO will either be:

- **T**otal **H**eat **G**enerated by all the plants supplying heat to the heating system (**THG**), or
  - **T**otal **H**eat **U**sed on the system for eligible and ineligible purposes (**THU**).
- 6.20 The quantity you use will be determined by the nature and metering arrangements of your system. If your installation has a mixture of eligible and ineligible heat uses, and/or a mixture of eligible and ineligible heat generating plants, there are the following options:
- If you meter all eligible and ineligible heat generating plants, you will be able to quantify the THG. The EHO of your installation can be calculated by dividing HGBI by THG and multiplying the answer by HUEP. The EHO can then be multiplied by the applicable tariff to calculate your RHI periodic support payment.
  - If you meter all eligible and ineligible heat uses you will be able to quantify THU. The EHO of your installation can be calculated by dividing HUEP by THU and multiplying the answer by HGBI. The EHO

can then be multiplied by the applicable tariff to calculate your RHI periodic support payment.

6.21 Please see the appendix for worked payment calculations for the different system types:

- Calculation for installations with 'standard' metering arrangements
- Calculation for installations using 'multiple' metering for RHI payment purposes
- Multiple metering where a heat loss calculation has been used
- Biogas system with multiple metering arrangements
- Calculating tiered payments
- Payment calculation for new solid biomass CHP systems
- Payment calculation for shared ground loops system comprised of deemed and metered heat pumps

6.22 There are additional elements to the payment calculation for some eligible technologies and system types in certain circumstances. These are explained below.

### **Calculating payments for biogas installations**

6.23 The payment calculation for biogas systems needs to take account of the Heat Supplied to the Biogas production plant (HSBG) which produced the biogas combusted in the quarterly period. This is considered an eligible use of heat, but it must also be deducted from the EHO. The EHO is determined in the same way as set out in the section above. Once HSBG has been deducted from EHO the resulting figure is multiplied by the applicable tariff to calculate your RHI periodic support payment.

### **Calculating tiered payments**

6.24 A two-tier tariff has also been introduced for:

- Ground and water source heat pumps accredited on or after 21 January 2013. They started receiving the new tiered tariff from 28 May 2014.

- Large biomass installations (>1MWth) accredited on or after 14 December 2016. They started receiving the new tiered tariff from 20 September 2017.

- 6.25 A tiered tariff structure operates on a 12-month basis, starting with an installation's date of accreditation or its anniversary. The regulations specify that during this 12-month period, an initial amount of heat equal to the amount of heat generated by the installation running at its installation capacity for a set period of time is eligible for a Tier 1 tariff.
- 6.26 For small and medium biomass installations with a date of accreditation before 20 September 2017 and ground or water source heat pumps the first 1,314 hours (15% of a year) will be payable at the higher Tier 1 tariff.
- 6.27 For small, medium and large biomass installations with a date of accreditation from 20 September 2017 the first 3,066 hours (35% of a year) will be payable at the higher Tier 1 tariff. Any further heat used during this 12-month period will be payable at the lower Tier 2 tariff. At the start of the next 12-month period, the initial amount of heat will again be payable at the higher Tier 1 tariff. We consider the 'initial heat' threshold will only be crossed when eligible heat output (e.g. the quantity of heat on which payments will be made) has exceeded the tier threshold. Biomethane has a three-tier system which is explained in points 6.45 to 6.48 below.

### **Calculating payments for installations using multiple metering where they have calculated a quarterly heat loss figure (QHLF)**

- 6.28 For installations where the applicant completed a Heat Loss Assessment (HLA) and made a case for using a heat loss calculation (HLC) during the application process instead of installing additional metering, they would have been asked to submit their calculated 'quarterly heat loss figure' (QHLF). This QHLF will be accounted for automatically as part of the EHO calculation performed by the RHI Register. The QHLF value is fixed and can only be amended if the parameters in your HLA have changed in such a way that the QHLF also changes.
- 6.29 If a change has been made to the external piping or any other changes to the heating system which might affect the basis of the original heat loss calculation the participant must notify us within 28 days of the changes being made. This notification should be

made as an amendment via your RHI account on the RHI Register. In the first instance, you should send the notification to our RHI amendments email ([rhi.notification@ofgem.gov.uk](mailto:rhi.notification@ofgem.gov.uk)) with the RHI number in the subject box. The email should include:

- Details of the changes made. For example, how the pipework or pipe insulation has been altered, which could include the addition or removal of a section. The information should be clear as to where on the heating system the change has been made, in what way and how the changes will affect the original pipework and heating system arrangement.
- If relevant, any additional evidence (e.g. photos, manufacturer's information).
- A revised 'Heat Loss Assessment' should be attached to the email. This should also contain an amended heat loss calculation if necessary.

6.30 We will review this information on a case-by-case basis. If we decide that the QHLF should be changed, we will approve the amendment and the revised figure will be accounted for automatically as part of the EHO calculation performed by the RHI Register.

### **Calculating payments where a qualifying percentage is required**

6.31 This section applies to:

- Solid biomass installation sized 1MWth and above where contaminated biomass and/or ancillary fossil fuel is used
- CHP installations where only certain combustion unit(s) produce eligible heat
- Solid biomass contained in waste
- Biogas combustion installations using gasification or pyrolysis where contaminated biomass or waste is used as feedstock

6.32 For these categories of technologies a 'qualifying percentage' or 'renewable percentage' of the fuel input needs to be calculated. This is referred to as a reduction 'pro rata' in the regulations.

- 6.33 For details on how the energy content of the contamination, ancillary fossil fuel or other fossil fuels can be measured, please see the FMS guidance.
- 6.34 The non-biomass portion of the fuels used is deducted from the payment. If the qualifying percentage is 95 %, this will be the proportion of energy from solid biomass. The payment is multiplied by this percentage / fraction to give a payment figure that has been adjusted for fossil fuel input.
- 6.35 Where the participant has declared upfront that feedstock contaminated with fossil fuel will be used in the accredited installation, the tariff payment is adjusted to deduct the fossil fuel contamination in the feedstock.
- 6.36 Therefore the 'renewable' percentage of the feedstock going into a gasification plant is multiplied by the payment each quarter to determine the final payment. For example, where the contamination percentage is 5%, the payment would be multiplied by 95% to determine the final payment.
- 6.37 No account of any fossil fuel used for permitted ancillary purposes at the heat generating plant is taken.

### **Calculating payments if fuel consignments do not meet sustainability requirements**

- 6.38 This section applies to installations which must comply with the sustainability criteria, including those producing biomethane for injection.
- 6.39 Where one or more fuel consignments used in any quarter as a fuel or feedstock to generate heat or produce biomethane for injection do not meet the sustainability criteria, such that some of the fuel is sustainable and some is not, then it is likely we will ask for a calculation to be done to calculate how much heat can be apportioned to the unsustainable fuel consignment(s).
- 6.40 In this case it will be the responsibility of the participant to apportion heat and present evidence to Ofgem for what payments they are entitled to, based on the consignments of fuel which met the sustainability criteria.

- 6.41 This evidence may take the form of the quantity and the gross calorific value (GCV) of all fuel consignments used in the relevant quarter, both the sustainable and unsustainable. The participant can use this to calculate the proportion of energy content from the unsustainable consignment(s) and use this to apportion the eligible heat output.

### **Payments for biomethane producers**

- 6.42 Registered producers of biomethane have a separate payment calculation formula because heat is not generated in the biomethane injection process.
- 6.43 Biomethane participants with a date of registration on or after 12 February 2015 will have a three-tier tariff applied to their payments. This tariff structure operates on a 12-month basis, starting with the date of registration, or its anniversary. The regulations specify that during that 12-month period, the first 40,000MWh of biomethane injected that is eligible for payments will be paid the tier 1 biomethane tariff. The next 40,000MWh of biomethane injected eligible for payments after the tier 1 threshold has been met will receive the tier 2 biomethane tariff. Any subsequent biomethane injected that is eligible for payments will receive the tier 3 biomethane tariff (see worked example G).
- 6.44 To calculate how much biomethane producers should be paid each quarterly period, five types of data are needed. These are:
- (1) The volume (in cubic metres) and Gross Calorific Value (in kilowatt hours per cubic metre) of biomethane injected into the gas network (giving a figure in kWh). Participants should ensure that, where relevant, appropriate adjustments are made for temperature and pressure.
  - (2) The GCV and volume of propane that was contained in the biomethane, appropriately adjusted for temperature and pressure (giving a figure in kWh).
  - (3) Any heat supplied to the biomethane production process (in kWhth).

- (4) Any heat supplied to the biogas production plant from an 'external' source (i.e. any source other than from heat generated from the combustion of the biogas) (in kWhth). Where a methodology to 'apportion' this heat was agreed at registration, the calculations used to determine the relevant portion should be provided (refer to chapter 12 of Volume one of our guidance for further information).
- (5) The contamination percentage (where the biomethane has been produced from contaminated feedstock that has gone through a gasification or pyrolysis conversion process). This figure will be deducted from 100 % to give the solid biomass proportion contained in the feedstock'. For example, a 5% contamination percentage will give a solid biomass proportion of 95%.
- (6) Once registered, biomethane producers will be required to submit the above information regularly as periodic data. The payment due to a biomethane producer is based on the eligible biomethane and is calculated by subtracting Items 2-4 in the above list from Item 1. This is then multiplied by the proportion of biomass contained in the feedstock.

6.45 Directly below is a worked example of tiered biomethane payments for those with a date of registration from 12 February 2015:

**Maximum capacity: 90,000,000 kW**

**Tariff rate as of 12 February 2015:**

- Tier 1 up to 40,000,000 kWh = 4.92p/kWh
- Tier 2 for the next 40,000,000 kWh = 2.90 p/kWh
- Tier 3 for further eligible biomethane up to maximum capacity = 2.24 p/kWh

Quarter 1 (Q1)

- Biomethane injected which is eligible for payment: 28,000,000 kWh
- Payment for Q1 = 28,000,000 x 4.92 = £1,377,600

Quarter 2 (Q2)

- Biomethane injected which is eligible for payment: 13,000,000 kWh
  - Amount payable on tier 1 tariff =  $(40,000,000 - 28,000,000)$   
= 12,000,000 kWh
  - Amount payable on tier 2 tariff =  $(13,000,000 - 12,000,000)$   
= 1,000,000 kWh
- Payment for Q2 =  $(12,000,000 \times 4.92) + (1,000,000 \times 2.9) = \text{£}619,400$

### Quarter 3 (Q3)

- Biomethane injected which is eligible for payment: 19,000,000 kWh
  - Amount payable on tier 2 tariff =  $(40,000,000 - 1,000,000) =$   
39,000,000 kWh
- Payment for Q3 =  $19,000,000 \times 2.9 = \text{£}551,000$

### Quarter 4 (Q4)

- Biomethane injected which is eligible for payment: 21,000,000 kWh
  - Amount payable on tier 2 tariff =  $(40,000,000 - 19,000,000 -$   
 $1,000,000) = 20,000,000$  kWh
  - Amount payable on tier 3 tariff =  $(21,000,000 - 20,000,000)$   
= 1,000,000 kWh
- Payment for Q4 =  $(20,000,000 \times 2.9) + (1,000,000 \times 2.24) = \text{£}602,400$

6.46 We will discuss the requirements for submission of periodic data with registered biomethane producers as part of their registration onto the scheme.

## Calculating payments for heat pumps

6.47 Payments for heat pump installations are not affected by the electricity meter readings submitted for seasonal performance factor calculations or by the meter readings submitted for measuring the heat drawn from the ground loop for simultaneous heating and cooling heat pumps. However, these readings should still be submitted along with other periodic data. This also applies to metered heat pumps in shared ground loop systems. However, deemed heat pumps in shared ground loop systems do not need to submit electrical meter readings.

### Calculating payments for new solid biomass CHP installations

- 6.48 Support payments for new solid biomass CHP installations may alter depending on whether or not installations have renewed CHPQA certification. If a new solid biomass CHP system has a date of accreditation on or after 1 August 2016 support payments may be affected by the power efficiency of the installation. Please see Chapter 14 for more details.

### When do payment periods begin?

- 6.49 Payments are payable based on quarterly periods as calculated from the date of the accreditation of the eligible installation, or from the date of registration for biomethane producers. For example, if an installation was accredited or a biomethane producer registered on 25 January 2017, then the first quarterly period would be considered to run from 25 January 2017 - 24 April 2017. You will be advised of your payment schedule in a notice from us once your installation becomes accredited, or once you become a registered biomethane producer.
- 6.50 Payments will cease after a fixed period of 20 years from the date of accreditation for your installation, or from the date of registration for biomethane producers.

### Actions that may impact your payment schedule

- 6.51 Please note that we will not make payments to you until:
- we are satisfied that the information given by the Authorised Signatory is accurate and the installation continues to meet the necessary requirements of the RHI scheme.
  - the installation has approved meters in place and these are fully functional.
  - we are satisfied that you can assess the fuel or feedstock you are using in fuelled installations against the sustainability criteria.
  - we have accredited the installation and you have received confirmation of accreditation from us.
  - we have fully resolved an issues we have identified as part of one of our audits.

- 6.52 We will calculate the amount owed to you for a quarterly period once you have submitted all the required periodic data (for further details see chapter 3), and we have determined the EHO for your installation (or, for biomethane producers, the eligible volume of biomethane produced).
- 6.53 We will review your periodic data submission and determine the EHO for that quarterly period. We will then calculate the amount payable to you for the quarter as determined by your tariff, taking into account any additional debits, credits or deductions applicable to the payment (for example, due to previous overpayments or as a result of any sanctions which may have been imposed).
- 6.54 If your periodic data is submitted to us more than one month after the conclusion of the relevant quarterly period end, then your payment for that quarterly period may be delayed. If there are exceptional circumstances as to why you have submitted your required periodic data after the due date, you will need to provide supporting evidence for your claim. For further details, please see the 'Late data' section in chapter 3.
- 6.55 We may raise a query on your periodic data submission and/or carry out an audit of your system. As a result of this review we may need to adjust the payment you are due or adjust the previous quarter's payment calculations. If you disagree with our decision then you may request a review of our decision or lodge a complaint with us. For further details see chapter 17.

### **When do payment periods begin?**

- We will amend the quarterly payment due to you for the quarterly period if there has been:
  - an overpayment in (a) previous quarter(s)
  - an underpayment in (a) previous quarter(s)
  - if an error has been made
  - if your payment is subject to a sanction (for further details see chapter 15 of this volume)
  - if you are in receipt of a grant and where we have agreed that a grant funding deduction will be made from your quarterly periodic support payments (Volume 1, chapter 4 explains the circumstances where we decide that a grant can be repaid through RHI periodic support payments)

- 6.56 Where applicable your payments may also be impacted by sustainability and feedstock requirements. See chapters 3 and 4 respectively for further information on these requirements.
- 6.57 If we are concerned that the conditions of the scheme are not being complied with we may apply a formal sanction, which could include:
- the suspension or withholding of a payment
  - the revocation of accreditation or registration under the RHI scheme.
- 6.58 For further details on compliance, please see chapter 15.

### **Repayment of a grant by deductions**

- 6.59 Where we decide that a grant can be repaid through periodic support payments, we will:
- determine the total value of any grant which has been paid for some or all of the purchase or installation costs of the eligible installation or equipment used to produce biomethane.
  - apply a price index adjustment each year on 1 April to the total value of the grant. The total value will incrementally rise over the 20-year tariff lifetime.
  - divide the total value by 80 following accreditation or registration and after each adjustment to determine the deduction for each quarterly period (80 being the number of quarterly periodic support payments within the 20-year tariff lifetime of the accredited installation or registered plant).
- 6.60 The grant deduction will be deducted from each quarterly periodic support payment. Where the periodic support payment is less than the amount of the grant deduction, we will deduct only that part of the grant deduction that can be paid. Any shortfall in that grant deduction will be carried forward and deducted from the next quarterly

periodic support payment in addition to the grant deduction determined for that quarterly periodic support payment.

- 6.61 Table 7 provides an example of how the grant deduction is calculated and adjusted by for each year of the 20-year tariff lifetime. In this example, the grant to be repaid is £10,000, the date of accreditation is 1 April, the annual price index adjustment is 2.5% and it is assumed that for each quarterly periodic support payment the grant deduction can be repaid without any shortfall.

**Table 7: Grant deduction example**

Year	Grant repayment	Price index adjusted repayment	Grant repayment deductions taken from quarterly periodic support payments Q1	Grant repayment deductions taken from quarterly periodic support payments Q2	Grant repayment deductions taken from quarterly periodic support payments Q3	Grant repayment deductions taken from quarterly periodic support payments Q4	Annual deduction
1		10000	125	125	125	125	500
2	10000	10250	128.1	128.1	128.1	128.1	512.1
3	10250	10506.3	131.3	131.3	131.3	131.3	525.2
4	10506.25	10768.9	134.6	134.6	134.6	134.6	538.4
5	10768.9	11038.1	138	138	138	138	552
6	11038.1	11314.1	141.4	141.4	141.4	141.4	565.6
7	11314.1	11597	145	145	145	145	580
8	11597	11886.9	148.6	148.6	148.6	148.6	594.4
9	11886.9	12184.1	152.3	152.3	152.3	152.3	609.2
10	12184.1	12488.7	156.1	156.1	156.1	156.1	624.4
11	12488.7	12800.9	160	160	160	160	640
12	12800.9	13120.9	164	164	164	164	656
13	13120.9	13448.9	168.1	168.1	168.1	168.1	672.4
14	13448.9	13785.1	172.3	172.3	172.3	172.3	689.2
15	13785.1	14129.7	176.6	176.6	176.6	176.6	706.4
16	14129.7	14482.9	181	181	181	181	724
17	14482.9	14845	185.6	185.6	185.6	185.6	742.4
18	14845	15216.1	190.2	190.2	190.2	190.2	760.8
19	15216.1	15596.5	195	195	195	195	780
20	15596.5	15986.4	200	200	200	200	800

**Total grant repayment: 12772.8**

**Cap for shared ground loop systems**

6.62 Where a shared ground loop system has single heat pumps providing heat to a single domestic premise on a one-to-one basis, a heat demand limit of 30,000kWth will apply to these heat pumps. This is the maximum heat generation that will be paid on annually, regardless of the total actual heat generation. (Heat pumps with non-

domestic purposes have no heat demand limit). For example if a heat pump with a domestic purpose has an annual total heat generation of 42,000kWth, it will only be paid on the basis of 30,000kWth.

### **Nominated bank account**

- 6.63 We will pay the amount you are due to your nominated bank account by BACS transfer. Please note that in accordance with the provisions of schedule 1 to the regulations we would require the bank account you nominate to receive your payments is an account which accepts pound sterling deposits in the United Kingdom. Failure to nominate a suitable account may result in your payment being delayed until a bank account which meets the requirements of the RHI is provided to us.
- 6.64 It will be a condition of accreditation that only one bank account will be allowed for each RHI participant. Where a participant has more than one accredited installation under the scheme, then payments for all of the installations will be made to the nominated bank account.

### **Subsidy Control Reporting**

- 6.65 To comply with European Union (EU) rules on state aid and competition we previously reported RHI payments above a cumulative threshold of €500,000 to accredited and registered participants to the European Commission's public State Aid transparency database.<sup>63</sup>
- 6.66 The government's Subsidy Control Act 2022 replaces requirements to report subsidies to the EU. For any further reporting required, we will report this to the awarded UK subsidies database managed by the Department for Business and Trade.<sup>64</sup>

---

<sup>63</sup> European Commission State Aid Transparency Public Search: [EC Search Aid Award data](#)

<sup>64</sup> Data base of subsidies awarded by UK public authorities: <https://searchforuksubsidies.beis.gov.uk/>

## 7. Maintenance

This chapter covers the types of maintenance required to keep your installation in working order. Maintenance of your boiler, meter(s) and other equipment which is part of your installation are ongoing obligations.

### Biomass boiler maintenance

- 7.1 Participants using solid biomass, or solid biomass contained in waste as fuel in an accredited biomass boiler, must carry out an annual maintenance check in relation to that boiler for each payment year. This requirement applies to all biomass boilers, including log gasification boilers. Payment year means any 12-month period beginning on or after 1 April 2022 commencing with the anniversary of the tariff start date. For example, if the anniversary of a tariff start date is 1 April 2022, the 12-month payment period is from 1 April 2022 to 31 March 2023.
- 7.2 Following the end of the participant's payment year, the participant must provide Ofgem with a declaration (as part of the annual declaration) stating that:
- the annual maintenance check has been carried out; and
  - the maintenance standard<sup>65</sup> has been met.
- 7.3 Participants must retain evidence (including service and maintenance invoices, receipts or certificates) of the matters stated in the declaration for the duration of their participation on the scheme and must provide Ofgem with that evidence when requested to do so e.g. as part of an audit.
- 7.4 The annual maintenance check must be completed by a HETAS Approved Biomass Maintenance Scheme (HABMS) accredited engineer, or an equivalent body approved by the Secretary of State.<sup>66</sup> Prior to 31 March 2026, Kiwa Limited were responsible, on behalf of DESNZ (the Secretary of State), for the assessment of equivalence to

<sup>65</sup> "maintenance standard" means MCS 040 or an equivalent standard and MCS 040" means Issue 1.0 of the document entitled "MCS 040: Planned and Preventative Maintenance of Biomass Appliances – Requirements for Maintenance Engineers carrying out Maintenance Activities" published on 30th June 2021(a) or a subsequent version of that standard. Please note "equivalent standard" means a document which (i) specifies the standards to be met by a participant when carrying out the annual maintenance check of a boiler which uses solid biomass, or solid biomass contained in waste, as fuel; and (ii) is approved by the Secretary of State under regulation 47B(1)(b).

<sup>66</sup> DESNZ will lead any required assessment of equivalency, contact [rhi@energysecurity.gov.uk](mailto:rhi@energysecurity.gov.uk)

this. We can only accept documentation issued by HETAS or an equivalent body approved by the Secretary of State certifying that the installation has been assessed against the maintenance standard MCS 040, as evidence that the maintenance standard has been met.

- 7.5 If an RHI participant fails to carry out their annual maintenance check this will be treated as a failure to comply with an ongoing obligation of the scheme and Ofgem may take compliance action.

### **Installation maintenance**

- 7.6 As an ongoing obligation, participants who own heat generating installations are required to maintain equipment within their installation to ensure it is working effectively. Given the wide range of eligible technologies it is not practical to specify a particular level of maintenance or frequency of servicing. As a general principle we require the equipment to be maintained in line with manufacturer instructions where available. Participants will need to keep any evidence of maintenance work carried out such as servicing receipts and will need to provide us with this evidence on request.

### **Meter maintenance**

- 7.7 In accordance with the regulations participants must keep all meters and steam measuring equipment:
- continuously operating
  - properly maintained and periodically checked for errors
  - recalibrated at least every 10 years, or in line with manufacturer's instructions where available, whichever is the sooner
  - located in accordance with any conditions associated with their accreditation.
- 7.8 Participants must keep evidence of the above including service and maintenance invoices, receipts or certificates for the duration of participation in the RHI (see below for further details). Failure to comply is a breach of your ongoing obligations and could result in enforcement action being taken against them as set out in chapter 15.

- 7.9 The requirements apply to all meters required by the regulations or required by Ofgem to demonstrate compliance with the regulations. These meters include, but are not limited to:
- **All heat meters** required by the payment calculation, including meters measuring eligible heat output **and** any heat deductions (see paragraph 6.12 and appendix 1 for more detail on payment calculations)
  - For heat pumps, **all electrical meters**
  - For biomethane producers and biogas plants, **any biogas flow meters** required to accurately calculate greenhouse gas values (see section F of your approved Fuel Measurement and Sampling questionnaire<sup>67</sup> for more detail on greenhouse gas calculations)
  - For biomethane producers, **all propane meters**
  - Any meter measuring fossil fuel input
  - **Any other meter** required to demonstrate compliance with the regulations.
- 7.10 The meters in the previous paragraph provide an inclusive rather than exhaustive list of meters required by the regulations or required by Ofgem to demonstrate compliance with the regulations, and should not be treated as a definitive compliance checklist. Participants are responsible for ensuring these requirements are complied with, including in relation to any other meters applicable under the regulations that are not listed in the previous paragraph.
- 7.11 Further where relevant, all individual components which form the meter must comply with these requirements. This includes but is not limited to flow meters, temperature sensors and pressure sensors. For example, we would expect temperature sensors or (for steam meters) differential pressure sensors to be checked on a regular basis.
- 7.12 Participants will be required to declare that periodic meter readings submitted to us are correct to the best of their knowledge and belief. We may ask for an explanation of the internal processes that are in place to ensure that meter readings are accurate.

---

<sup>67</sup> <https://www.ofgem.gov.uk/guidance/ndrhi-fuel-measurement-and-sampling-questionnaire>

## Meter recalibration

- 7.13 To comply specifically with the meter recalibration requirement set out above at 7.8, participants can choose to either **recalibrate** or **replace** their meter. All meters must be recalibrated or replaced within ten years (or sooner, in line with the manufacturer's instructions) of their initial installation. See paragraph 7.9 for guidance in relation to the types of meters this requirement applies to.
- 7.14 Participants must notify Ofgem in either scenario by following instructions in our ['Easy Guide to Amendments'](#) within 28 days of any changes. Ofgem requires evidence, including a date-stamped photograph showing the meter reading after a recalibration or replacement has occurred, and a copy of your calibration certificate should you choose to recalibrate your meter.

### Recalibration

- 7.15 If your meter has been recalibrated, you must notify Ofgem, as an amendment to your application may be required. Please see our ['Easy Guide to Amendments'](#) for instructions on how to correctly amend your applications. Participants are to hold evidence of the calibration of the meter's components, in compliance with the manufacturer's requirements, i.e. calibration certificates. These should be held for the duration of the scheme and provided for review at audit. Additionally, participants are to take a date-stamped photograph of the meter showing its reading once calibration has been completed.
- 7.16 Calibration certificates must demonstrate that the meter has been calibrated in accordance with the specific fluid composition of the heat transfer medium which it is measuring. This is of particular importance where the installation uses a non-standard heat transfer medium, such as a glycol/water mixture.
- 7.17 Calibration of meters and associated components should be carried out by the manufacturer or by organisations with relevant accreditation (applicable to Class 2 heat metering, steam metering and relevant temperature/pressure calibrations) from the United Kingdom Accreditation Service (UKAS). Further information on UKAS accreditation or the scope of accreditation held by an organisation can be obtained by contacting UKAS directly.

- 7.18 In addition, where calibration and testing is carried out by the manufacturer, we would expect that calibration and testing equipment used to calibrate RHI metering equipment should comply with appropriate International, European or British standards.
- 7.19 The Measuring Instruments Directive (MID) Annex I places certain requirements on heat meters with regard to protection and security of the calculator / digital integrator component.
- 7.20 An in-situ basic meter test would not satisfy this requirement as the regulations require the calibration to meet the standards set out above (7.16 – 7.18). Typically, we would expect that meters will be sent away for recalibration by the manufacturer or an independent testing laboratory.
- 7.21 The requirement set out at 7.2 also includes electrical meters, however the Regulations do not define the standard to which they must be calibrated. We would expect participants to recalibrate electrical meters in line with the relevant requirements set out in Annex 1 to the Measuring Instruments Directive and the specific requirements listed in Annex V (Active electrical energy meters (MI-003)) (or equivalent). This is in line with the regulatory requirements relevant to shared ground-loop heat pump installations and best industry practice.
- 7.22 If you submit readings using the integrated electrical meter in your heat pump, contact the manufacturer for advice on whether this component can be recalibrated or replaced. If it cannot, you should install an external electrical meter, which will be treated as a replacement meter. In this scenario, an amendment to your application will be required and you should follow the instructions provided in our ['Easy Guide to Amendments'](#).

### **Replacements**

- 7.23 A replacement meter need not be brand new, however it must be correctly calibrated at the point of installation. Participants have the option of retaining their old meter for reuse at a later date, providing the meter has been refurbished and recalibrated to the appropriate standard.

- 7.24 If a meter has been replaced, then the obligation on a participant to either recalibrate or replace the meter within 10 years (or sooner, in line with the manufacturer's instructions) will start from the date this replacement meter is installed.
- 7.25 Please note, the onus is on the participant to ensure they're complying with this regulation. If an RHI participant fails to recalibrate or replace their meter this will be treated as a failure to comply with an ongoing obligation of the scheme and we may take enforcement action which may include suspending or withholding payments. We encourage you to obtain your own legal and technical advice pertaining to your own individual circumstances, contacting your meter manufacturer if necessary.

## 8. Degression

This chapter explains what degression was and who would be affected

- 8.1 Under the degression mechanism, reductions could be made to an individual tariff, or tariffs offered to applicants, if certain circumstances set out in the Regulations were met. This was to ensure that the RHI Non-Domestic RHI scheme did not exceed its fixed annual budgets. The degression mechanism aimed to do this by lowering tariffs to bring deployment down and in line with anticipated – and affordable – levels. In comparison to a previous degression mechanism in place, changes as of 22 May 2018 aimed to stop tariffs from continuing to reduce once deployment slowed down. The changes were designed to simplify the rules and improve transparency. DESNZ was responsible for operating the degression mechanism and monthly data updates on budget management.<sup>68</sup>
- 8.2 The 2017 Regulations<sup>69</sup> include tables with quarterly expenditure limits for the scheme as a whole, and for each technology. These tables were updated as part of the 2017 Amendment Regulations. If these limits were exceeded in any quarter then one or more tariffs were reduced.

### Who was affected by degression

- 8.3 Installations with a date of accreditation or registration before 1 July 2013 were not affected by the degression mechanism. However, if you installed additional RHI capacity as an existing participant, the tariff you receive for any additional RHI capacity may have been affected under the degression mechanism. This will depend on the date of accreditation of your original installation and when the additional RHI capacity was added. For those who had been granted preliminary accreditation, when you applied for full accreditation you will have received the tariff applicable on your date of accreditation. For example if there had been a degression in the period between you being granted preliminary accreditation and making a full application following which your installation is accredited, the tariff you received would be the

---

<sup>70</sup>[https://www.gov.uk/government/uploads/system/uploads/attachment\\_data/file/231102/RO\\_Biomass\\_Sustainability\\_consultation\\_-\\_Government\\_Response\\_22\\_August\\_2013.pdf](https://www.gov.uk/government/uploads/system/uploads/attachment_data/file/231102/RO_Biomass_Sustainability_consultation_-_Government_Response_22_August_2013.pdf)

reduced tariff. It is important to note that being granted preliminary accreditation did not guarantee you a particular tariff.

- 8.4 If a degression was announced, the installation would need to have had a date of accreditation, or in the case of biomethane producers a date of registration, before the start of the next tariff period in order not to be affected by a tariff reduction. When we reviewed an application, if we considered that the installation had not met the eligibility criteria, or that the application had not been properly made before the date the reduced tariff(s) applied, then the installation or producer would not be eligible for the higher tariff. If we notified you that this was the case you would need to re-submit your application with the required information before the next tariff period to receive the higher tariff. Otherwise the initial tariff applied would be the one in place on the date of your accreditation or registration.
- 8.5 For tariff guarantee applications the date of receipt by Ofgem of a properly made stage 1 application was used to determine the tariff. When a full application (stage 3) was made the already secured tariff rate was used (where the application continued to meet the required eligibility criteria) even if there had been degressions in the intervening time. Tariff guarantees could expire if not used within certain timeframes. For full details please see our guide to tariff guarantees.

## 9. Additional fuel data reporting (only for biomass installations $\geq 1\text{MWth}$ and biomethane producers)

---

This chapter provides information on additional fuel data reporting and the reporting requirements for participants with solid biomass installations of  $1\text{MWth}$  and above, or who are biomethane producers.

### What is additional fuel data reporting?

- 9.1 Additional fuel data reporting is a responsibility to report sustainability data over and above the requirement for all fuelled installations and those producing biomethane for injection. It only applies to solid biomass installations with a capacity of  $\geq 1\text{MWth}$  and biomethane producers.
- 9.2 From 5 October 2015 all biomass and biogas installations and producers of biomethane are required to meet sustainability requirements and report to Ofgem on a quarterly basis to continue to receive RHI payments. Details are outlined in chapter 4.
- 9.3 Additional fuel data regarding sustainability information is required for all solid biomass plants with an installation capacity of  $1\text{MWth}$  and above – including those which are not using ancillary fuel or contamination in their installation (i.e. the installation uses only virgin biomass materials) and all biomethane producers, in accordance with Schedule 5 to the regulations. This information should be provided via the Ofgem RHI Register.
- 9.4 The information currently required is outlined in Table 8 below and is required for each fuel consignment used. The government has provided guidance on the characteristics that define a single consignment for the RO scheme<sup>70</sup>, and we will look to follow this approach where appropriate. The characteristics are:
- Feedstock type<sup>71</sup>;
  - Biomass form (solid biomass only);

---

<sup>70</sup>[https://www.gov.uk/government/uploads/system/uploads/attachment\\_data/file/231102/RO\\_Biomass\\_Sustainability\\_consultation\\_-\\_Government\\_Response\\_22\\_August\\_2013.pdf](https://www.gov.uk/government/uploads/system/uploads/attachment_data/file/231102/RO_Biomass_Sustainability_consultation_-_Government_Response_22_August_2013.pdf)

<sup>71</sup> This is to ensure that different biomass fuels are not grouped together, i.e. wood cannot be considered the same as sunflower pellets

- Mass
- Country of origin<sup>72</sup>;
- Classification of the fuel: whether it was a by-product of a process; derived from waste; an energy crop
- Whether the fuel was certified under an environmental quality assurance scheme, and if so, which; Compliance with land criteria;
  - i. Compliance with GHG criteria.
  - ii. Compliance with land criteria

---

<sup>72</sup> UK can be considered as a single country of origin

**Table 8: Information required for additional fuel data relating to sustainability reporting under Schedule 2 to the regulations**

<b>Element</b>	<b>Detail</b>	<b>Example</b>
<b>Biomass Type</b>	The material from which the biomass was composed	Wood
<b>Biomass Form</b>	Where the biomass can take different forms (e.g. wood chips or wood pellets), the form of the biomass	Wood pellets
<b>Mass</b>	Where the biomass is solid in its mass	Numeric figure
<b>By-product</b>	Whether the biomass was a by-product of a 'process' (as defined in the regulations).	By-product of the paper production process
<b>Biomass derived from waste</b>	Whether the biomass was derived from waste	n/a
<b>Biomass plant matter</b>	Whether the solid biomass was plant matter or derived from such, and the country where it was grown, OR the country from which the operator obtained the solid biomass	Straw, Spain
<b>Country of origin</b>	Where the biomass was plant matter or derived from plant matter, the country where the plant matter was grown	Spain
<b>Country of purchase</b>	Where the information specified in the row above is unknown or the biomass was not plant matter or derived from plant matter, the country from which the participant obtained the biomass.	Germany
<b>'Energy crop' (including types and proportions)</b>	Whether any of the consignment was an 'energy crop' (a term defined in the regulations) or derived from an energy crop and, if so: <ul style="list-style-type: none"> <li>• the proportion of the consignment which was or was derived from an energy crop.</li> <li>• the type of energy crop contained in the consignment.</li> </ul>	n/a
<b>Environmental quality assurance schemes</b>	Whether the biomass or any matter from which it was derived was certified under an 'environmental quality assurance scheme' as defined in the regulations and, if so, the name of the scheme.	UK Forestry Standard/UK Woodland Assurance Standard (UKWAS)
<b>Land use</b>	Where the biomass was plant matter or derived from plant matter, the use of the land on which the plant matter was grown since 30 November 2005.	Used for forestry purposes

### **When to submit the additional fuel data relating to sustainability information**

- 9.5 You will be required to report quarterly on sustainability information as part of your periodic data. The information provided should be accurate to the best of your knowledge and belief.
- 9.6 Participants are required to provide us with all the information listed in Schedule 2 to the regulations, however, in certain circumstances, there may be information required by Schedule 2, which is not available to the participant. In such circumstances, please contact us to explain why the relevant data is not available. We shall then consider whether we are able to agree that the submission of the relevant piece of information is not required.

### **Publication of additional fuel data relating to sustainability information**

- 9.7 As part of our reporting obligations under the regulations we will publish sustainability information in aggregate form, on a quarterly and annual basis, on the Ofgem RHI website. We will share all submitted information with DESNZ.

### **Audits**

- 9.8 Participants should be aware that we may wish to carry out an audit of the sustainability reporting information. Participants should therefore make sure that any information relevant to the sustainability reporting criteria is available on request to an audit team. For further information on our audit procedures, please refer to chapter 15.
- 9.9 In addition to the RHI audits, if you are self-reporting against the sustainability requirements (which came into force on 5 October 2015) and your installation capacity is 1MWth or above or you produce biomethane for injection then you will also be required to provide Ofgem with an independent annual sustainability audit report. Please refer to the Sustainability Audit Guidance for Participants and Auditors<sup>73</sup> for more information about annual sustainability audit reports.

---

<sup>73</sup> <https://www.ofgem.gov.uk/publications-and-updates/non-domestic-rhi-main-guidance>

## 10. Additional capacity

---

This chapter covers the definition of additional capacity; when to contact Ofgem; the impact of installing additional capacity; and specific requirements for: air quality, solar thermal, biogas, biomethane and Modified Capacity.

### Additional RHI capacity (excluding biomethane)

- 10.1 Applications for the accreditation of additional RHI capacity closed on or before midnight 31 March 2021 (note applications for additional capacity for Shared Ground Loops Systems and tariff guarantees for additional capacity were not available<sup>74</sup>). 'Additional RHI capacity' means a plant which is:
- first commissioned after the date on which the original accredited RHI installation was first commissioned; and
  - uses the same source of energy and technology as the original installation; and
  - supplies heat to the same heating system of which the original installation forms part<sup>75</sup>.
- 10.2 For example, if an RHI-accredited biomass boiler forms part of a heating system, and another biomass boiler is installed supplying heat to the same heating system, the second boiler would be considered additional RHI capacity.
- 10.3 There were separate arrangements for modified capacity for ground source heat pumps and shared ground loops. For more information on modified capacity for heat pumps see Volume 1 Chapter 8 and Volume 2 Chapter 5.

---

<sup>74</sup> Regulations, Part 3, Regulation 35

<sup>75</sup> Regulations, Part 8, Regulation 76(3)

### Informing us of installing additional capacity

- 10.4 If you install any additional plant supplying heat to a heating system as part of an accredited RHI installation, you must inform us within 28 days of the addition<sup>76</sup>even though it is not possible to apply for additional capacity support now.
- 10.5 If you fail to notify us of this new plant (including any new plant which is “additional capacity”) within 28 days, appropriate enforcement action may be taken. For further information on our compliance and enforcement powers please see chapter 15.
- 10.6 You can let us know if you have installed a new plant or have made other amendments to the heating system by emailing us at [RHI.notification@ofgem.gov.uk](mailto:RHI.notification@ofgem.gov.uk) . You can also contact us by post or through your RHI Register user account.

### Impacts of installing additional capacity

- 10.7 By installing additional capacity (with or without RHI accreditation), the eligibility of your original installation may be affected. **Additional RHI capacity must be metered** so we can accurately determine the heat generated by both the original plant and any additional plant or capacity on the system which is used for eligible purposes.
- 10.8 If all heat were metered at point of use on the original application, we would typically expect both the original installation and the additional RHI capacity to be separately metered at point of generation. This would help to ensure continued compliance with metering requirements. One example of ensuring accurate metering in this scenario would be to meter both the original installation and additional RHI capacity individually at their respective points of generation.

---

<sup>76</sup> Regulations, Part 3, Regulation 43(m)

- 10.9 If we have reasonable grounds to suspect that the original accredited RHI installation is no longer eligible following the installation of additional capacity or new plant on the same heating system, we may temporarily withhold payments in order to investigate the issue further. Information on temporary withholding of payments is available in chapter 15.
- 10.10 A new heat generating plant which uses a different technology or source of energy and forms part of the same heating system as an existing RHI accredited installation would be considered a separate installation for RHI purposes. You cannot now apply for RHI accreditation for this new plant, but you must still notify us of the addition of the new plant. This is to comply with your ongoing obligations which require you to notify Ofgem within 28 days if you make changes to your application, major changes to your installation or heating system of which it forms part of (see our Easy Guide to Amendments for more information).

### **Additional capacity for biomethane**

- 10.11 Biomethane producers were also able to apply for additional capacity if their date of registration was on or after 28 May 2014, and they submitted a properly made application for additional capacity before midnight at the end of 31 March 2021.

### **Modified Capacity**

- 10.12 This section does not apply to shared ground loop systems. The arrangements for Modified Capacity for Shared Ground Loops (SGL) are different. For information on modified capacity for SGL please see chapter 8 of Volume 1.
- 10.13 We would not consider instances where the thermal output of an existing accredited installation is changed by the modification or addition of heat-transfer medium or primary combustion equipment as Additional Capacity. These would be classified as 'Modified Capacity'. Such changes would still be regarded as a material change for which Ofgem would need to receive a formal notification within 28 days of that change being made.
- 10.14 Some examples of situations which we would deem to be capacity modifications would be replacing burners in an existing boiler, re-tubing a boiler to increase the thermal output, installing new heat-recovery equipment to a CHP in order to increase peak

output capacity. Ofgem will require evidence of the information outlined in schedule 1 to the regulations as with the normal application process, and will evaluate each notification of change on a case-by-case basis.

## 11. Change of ownership, change of producer and relocation of an accredited RHI installation

---

This chapter contains information on how a change of ownership or the relocation of all or part of an accredited RHI installation is treated under the RHI scheme. This section also covers a change of producer of biomethane for injection.

### Change of ownership of an accredited RHI installation

- 11.1 The regulations allow for the ownership of an installation, or part of an installation, to be transferred. This means that if you are the existing owner of an accredited RHI installation and wish to sell or transfer all or part of the plant comprising the physical installation, the new owner will be able to assume entitlement to payments under the RHI for the remainder of the installation's tariff lifetime provided the conditions below are met. Ownership of an RHI tariff without ownership of all or part of the plant comprising the physical installation does not meet the ownership criteria for becoming (or remaining) a participant on the scheme.
- 11.2 Where an accredited installation is bought by or transferred to a new owner, the current scheme participant (outgoing owner) ceases to be entitled to payments for the installation from the date of transfer of ownership. The new owner may apply to receive RHI support for the remaining eligibility period of the installation. This is provided that all eligibility criteria are still being met and that we are satisfied that the new owner will comply with the ongoing obligations required under the scheme.
- 11.3 In order for a new owner to begin receiving payments for an installation which was accredited under previous ownership and ownership of all of which is now transferred, the following steps need to be completed:
- the prospective participant (new, incoming owner) will need to contact us and notify us of a change in ownership in order to become eligible to receive periodic payments as a participant. Once we are satisfied they are the new owner, that they will comply with the ongoing obligations of the scheme, that they have supplied us with any information we require them to supply and that the installation continues to meet the eligibility criteria,

we will update our register to reflect that the new owner is now the scheme participant for that installation and

- the current scheme participant (outgoing owner) needs to advise us in writing that ownership is being transferred to a new owner.

- 11.4 We need to be notified by the outgoing owner of the change in ownership of an accredited installation within 28 days of the date of the change. If an outgoing owner fails to notify us of a change of ownership within 28 days, he or she will be in breach of their ongoing obligations and we may take enforcement action against them.
- 11.5 A delay or failure by an outgoing owner may impact on the time taken for payments to be transferred to a new owner, a prospective owner may wish to consider including an obligation on the outgoing owner to complete the required notification in any transfer documentation.
- 11.6 Payments for the original owner of an accredited installation will stop from the date of transfer of ownership. This is because eligibility for the RHI payments is based on ownership of the relevant installation. Payments for the new owner will only start from the date that we are satisfied with the completion by the new owner of the formalities required to demonstrate his/her entitlement and, where applicable, maybe back-dated to the date of transfer.
- 11.7 If you are the incoming owner of an installation then, even if the outgoing owner has notified us of a change of ownership, as the installation's new owner you should contact us as soon as possible to notify us of the change (within 12 months of the change in ownership date – see below). We may ask you to supply evidence of ownership (in addition to any other information which we may require under the regulations in order to enter you into the Ofgem RHI register or to review the eligibility of your installation).
- 11.8 A notification of a change of ownership of an installation must be made to us and the new owner entered in the RHI register as a participant within 12 months of the change of ownership. After this period, if either of these things has not happened, the installation will no longer be accredited and the incoming owner will not be entitled to any payments, unless we consider it is just and equitable to extend this period. An application for the same installation to re-join the scheme at a later date would not be accepted.

## Change of producer of biomethane for injection

- 11.9 From 1 April 2021, participants are able to transfer their registration as a producer of biomethane for injection. In order to do so, there are a number of steps that must be completed by the new participant (ie 'new producer') and the old participant. (ie 'original producer'). These steps have been set out below.
- 11.10 The original producer must notify us of any changes made to their registration or equipment used to produce biomethane within 28 days of making such changes. Failure to notify us of any changes (including change of producer of biomethane for injection) is a breach of ongoing obligations, which may result in Ofgem taking enforcement action.
- 11.11 The regulations require the 'new producer' to notify us of a change of producer of biomethane for injection. Notification should be made by the new producer via email to [RHI.AccountChanges@ofgem.gov.uk](mailto:RHI.AccountChanges@ofgem.gov.uk). The notification email must include the following information:
- The details of the account for which you seek to transfer the registration to, this will be your ORG reference and follow the format ORGXXXXXXXXXX
  - The change of registration date,
  - Confirmation of whether any changes have been made to the equipment used to produce the biomethane,
  - Proof the old producer is no longer party to the Network Entry Agreement (NEA).
- 11.12 Periodic support payments to the new producer will be calculated from the date on which they notified Ofgem of the change in registered producer. This being the case, the new producer should ensure they have a full set of meter readings taken on the date of notification.
- 11.13 On receipt of notification from the new producer, we will assess whether we are satisfied that the ongoing obligations will continue to be complied with, and that all the applicable requirements will continue to be met. We may ask the new producer to provide any information we consider necessary to undertake this assessment. Please

note we may refuse to register a new producer where we consider that one or more of the applicable ongoing obligations will not be complied with.

11.14 Once the registration has been transferred to the new producer's account, Ofgem will advise the new producer to resubmit the original application for registration of a biomethane producer. This will allow the new producer to upload the following documents:

- (i) A biomethane declaration form
- (ii) A new Network Entry Agreement (signed and dated)
- (iii) Where applicable, proof of change of ownership of the biomethane plant (ie. the injection equipment, upgrade equipment and the AD plant).

11.15 Where we are satisfied that the ongoing obligations will continue to be complied with, and that all the applicable requirements will continue to be met, we will approve the change and issue a statement of eligibility to the new producer, which will include the following information:

- the date of registration of the original producer
- the date on which the new producer is added to the central register
- the tariff which applies
- the process and timing for providing meter readings (if applicable)
- details of the frequency and timetable for periodic support payments, and
- the tariff lifetime and tariff end date.

11.16 In addition to issuing a statement of eligibility, we will stop periodic payments to the original producer for the production of biomethane for injection. Once these steps have been completed, and the new producer has commenced injection of biomethane, the new producer will be paid periodic payments from date on which we received notification of the change from the new producer.

11.17 Where notification of a change of producer, or the information we request following the receipt of such notification, is not provided within 12 months beginning with the date on which the change of producer took place, the original owner will cease to be registered and no further periodic support payments may be made in respect of any biomethane produced using that equipment.

### **Transfer of part of an installation**

- 11.18 Where only part of an installation has been transferred to a second owner, the new part owner must notify us of the transfer. When notifying us we may require the new part owner to provide information such as evidence of part ownership. The original participant should advise us of this change of ownership within 28 days of the transfer. This can be done online through your RHI account.
- 11.19 Please note that where only part of an installation's ownership has transferred, we will require that the original accredited owner act as the 'representative owner' for all owners of that installation and will therefore continue to be regarded as the participant for that installation for the purposes of the RHI. For further information about representative owners, please refer to volume 1, chapter 4.
- 11.20 The representative owner is required to ensure compliance with all ongoing obligations of the scheme. Where there is a change of ownership of part of an installation, we may require that the representative owner provides us with evidence that they have authority from all other owners to be the participant for the purposes of the scheme.
- 11.21 We may extend the period in which we need to be notified of a change of ownership by a new owner of all or part of an accredited installation if we consider this to be just and equitable.<sup>77</sup> Any attempts to continue to receive payments for an accredited installation while no longer in ownership of the installation could constitute fraud and will be dealt with accordingly. Please see chapter 15 for further information on our approach to fraud.

### **Relocation of an accredited RHI installation, and effect on tariff lifetime**

- 11.22 If you would like to relocate your accredited RHI installation, you must notify us by email within 28 days of the date that it is moved to the new location. We will stop RHI payments from the date the RHI installation is relocated. Payments will only recommence once notification has been received and we have determined that the RHI installation should continue to be accredited. On receipt of the notification we may require further information. We will review the information and accreditation to

---

<sup>77</sup> Regulations, Part 6, Regulation 54(6)

determine whether the RHI installation continues to meet the eligibility criteria at the new location and can continue to be accredited.

- 11.23 When relocated, if we determine that the RHI installation should continue to be accredited you will receive payments for the remainder of the 20-year tariff lifetime from the original accreditation date, however your Periodic Data submission date will change to the date when your installation was reaccredited. For example, if an installation is sold 5 years after being accredited to the RHI, then the new owner will be eligible to receive payments for the remaining 15 years of the tariff lifetime.

### Installation breakdown

- 11.24 If an installation breaks down and needs to be replaced, you must notify Ofgem within 28 days of this change to your installation. Under certain circumstances you may be eligible to submit a new application for a replacement plant. Please refer to chapter 12 of this document for further information on the eligibility requirements of replacement plants and the process for submitting an application for a replacement plant.
- 11.25 We will assess on a case-by-case basis whether we consider the change to your installation to be a replacement or a repair. Please see the tables at the beginning of each technology specific chapter in Volume 1 for details of the integral equipment for each technology.

## 12. Replacement plant

---

This chapter outlines what a replacement plant is in the context of the Non-domestic RHI. It contains information about the criteria that needs to be met in order for participants to be able to replace their plant and what the potential consequences of replacement a plant.

### Criteria for replacement plants

- 12.1 From 1 October 2018, participants who wish to replace their accredited plant will be able to do so, as long as they meet the criteria set out below. Eligible replacement plants will retain the same tariff and scheme lifetime as the original plant which they have replaced.
- 12.2 The RHI Regulations define a replacement plant as “a plant which is installed in place of an original plant and uses the same source of energy and technology as the original plant”. A replacement plant must meet this definition in order to be considered a replacement plant in line with the RHI Regulations.
- 12.3 A replacement plant must meet the eligibility requirements applicable to the original plant which it is replacing. In addition, plants which generate heat from solid biomass must adhere to the current air quality requirements irrespective of the date on which the original installation was accredited.
- 12.4 As a participant of the RHI scheme you are required to inform Ofgem within 28 days of the installation of a replacement. Failure to do so would be in breach of your ongoing obligations and may result in compliance action.
- 12.5 No payments will be due between the date an original plant ceased to provide heat, or was decommissioned and the date Ofgem received all the required information to assess the eligibility of a replacement plant.

- 12.6 You must ensure you submit the information required to enable Ofgem to determine the eligibility of your replacement plant. Further information on the eligibility criteria of the RHI scheme can be found in the Non-domestic RHI Guidance Volume 1: Eligibility and How to Apply. RHI payments will only be continued from the date Ofgem has received the necessary information to determine a replacement plant is eligible under the RHI.
- 12.7 Please note replacement plants are treated differently under the Feed-in Tariff (FIT) scheme. If your installation is accredited under both the RHI and FIT schemes and you replace all or part of your plant, this may affect your FIT accreditation. If you are in doubt over whether a change to your installation would cause you to lose FIT accreditation, please contact your FIT licensee in the first instance.

### **Changes in capacity**

- 12.8 Replacement plants may have a different capacity to that of the plant which they are replacing. In all cases, the tariff applicable to an eligible replacement plant will be the same as the original plant's tariff, even if the new capacity has resulted in a tariff boundary being crossed. However, RHI payments issued for heat generated by a replacement plant will never exceed the RHI payments that could have been issued for the original installation. In other words, the total amount of RHI payments for eligible heat produced in each reporting year will be capped. This cap will be based on the maximum feasible generation of the original plant.
- 12.9 In the instance where the original plant was in receipt of a tiered tariff, changes in capacity between an eligible replacement plant and the original plant will affect the tiering threshold applicable to the replacement plant.
- 12.10 Where a replacement plant has a greater capacity than the original plant, the tiering threshold applicable to the replacement plant will be based on the capacity of the original installation.
- 12.11 Where the capacity of the replacement plant is smaller than that of the original plant, the tiering threshold applicable to the replacement plant will be based on the capacity of the replacement plant.

**Example 1 – replacement plant has equal capacity to the original plant**

- A 60kW biomass boiler with a date of accreditation of 1 June 2014 is replaced with a 60kW biomass boiler for which an application is submitted on or after 1 October 2018. The tiering thresholds applicable to the replacement plant will be based on the capacity of the original installation. In this example, the tiering threshold would not change as the capacity of the replacement plant is the same as that of the original installation.

**Example 2 – replacement plant has greater capacity than original plant**

- A 60kW biomass boiler with date of accreditation of 1 June 2014 was replaced with 199kW biomass boiler for which an application is submitted on or after 1 October 2018. The original plant and replacement plant will receive the same tariff and tiering threshold.

	<b>Original installation</b>	<b>Replacement plant</b>
<b>Capacity</b>	60 kW	199 kW
<b>Tier 1</b>	<b>9.66 p/kW</b>	<b>9.66 p/kW</b>
<b>Tier 1 threshold</b>	= Capacity of original installation x 1314 hours  = 60 x 1314 = <b>78,840 kWh</b>	= Capacity of original installation x 1314 hours  = 60 x 1314 = <b>78,840 kWh</b>
<b>Tier 2</b>	<b>2.53p/kWh</b>	<b>2.53p/kWh</b>
<b>Payment cap</b>	N/A	= maximum annual generation of original installation  = 60 x 24 hours x 365 days = <b>525,600 kWh</b>

In this scenario, tier 2 payment will be issued for eligible heat produced above the 78,840kWh threshold and will be capped at 525,600kWh (i.e. the payment cap) each reporting year. Any eligible heat produced in each reporting year which exceeds 525,600kWh will not be eligible for payment.

**Example 3 – replacement plant has smaller capacity than original plant**

- A 199kW biomass boiler with date of accreditation of 1 June 2014 was replaced with a 60kW biomass boiler for which an application is

submitted on or after 1 October 2018. The replacement plant will receive the same tariff as the original plant. In this case, the tariff is made up of 2 tiers. However, the replacement plant's tiering threshold will be calculated based on the capacity of the replacement plant, not the original plant.

	<b>Original installation</b>	<b>Replacement plant</b>
<b>Capacity</b>	199 kW	60 kW
<b>Tier 1</b>	<b>9.66 p/kW</b>	<b>9.66 p/kW</b>
<b>Tier 1 threshold</b>	= Capacity of original installation x 1314 hours  = 199x 1314 = <b>261,486 kWh</b>	= Capacity of original installation x 1314 hours  = 60 x 1314 = <b>78,840 kWh</b>
<b>Tier 2</b>	<b>2.53p/kWh</b>	<b>2.53p/kWh</b>

In this scenario, RHI payments issued in each reporting year will be based on the capacity of the replacement plant. As such, tier 1 payments will be issued for the first 78,840kWh of eligible heat generated each reporting year. No cap on generation will be applied as the capacity of the replacement plant is smaller than that of the original plant.

## How to apply for a replacement plant

- 12.12 If you have replaced, or intend to replace, your accredited plant, you will need to submit a new RHI application for the accreditation of your replacement plant.
- 12.13 There may be cases where an alteration is made to an accredited installation which will not constitute a replacement of a plant. This could include minor repair work following a service. However, large-scale changes to the heat generating equipment of an accredited installation (e.g. decommissioning and changing one or more of your biomass boilers) is likely to be considered a replacement.
- 12.14 In the case that your original plant was comprised of more than one component plant and you have replaced one or more of those component plants, your replacement plant application should be in respect of all component plants that make up your plant, including the component plant you have replaced. In other words your replacement plant application should not only include the component plant you are replacing.

- 12.15 When completing a new application form for your replacement plant, you will be asked four questions which specifically relate to the replacement of your plant:
- Question reference **HA099-2** will ask you whether your plant is a replacement plant or an accredited plant which has been relocated.
  - Question reference **HA099-3** will ask you for the RHI number of your original accredited plant.
  - Question reference **HA099-4** will ask you for the decommissioning date of your original plant.
  - Question reference **HC110** will ask you to enter the commissioning date of your replacement plant.
- 12.16 Once you have completed an application for your replacement plant, Ofgem will assess the eligibility of your replacement plant and will contact you if any further information is required.
- 12.17 If your original plant was accredited prior to 2014, please note the evidence accepted with your original application may not be accepted with your replacement plant application. For example, you may need to submit an updated schematic, as the pre 2014 schematic may not meet our current standards.
- 12.18 In addition, replacement plants which generate heat from solid biomass must comply with the current air quality requirements, for more information on air quality, please refer to the Non-domestic RHI Guidance Volume 1. As part of your replacement plant application you will be asked questions in relation to air quality including being asked to provide an emissions certificate. For further information on emission certificates, please see Chapter 9 of the Non-domestic RHI guidance: Volume 1.

## 13. Ongoing scheme obligations for biomethane producers

---

This chapter covers ongoing obligations that apply only to registered biomethane producers

- 13.1 Participants that are biomethane producers are subject to many of the same ongoing obligations as owners of biomass and biogas plants and should therefore read other sections of this volume (for example, fuelling and sustainability requirements). This chapter covers additional ongoing obligations for only biomethane producers.

### Propane

- 13.2 Biomethane may require the addition of propane to bring it to the required quality (calorific value) to inject on to the gas network. The energy content of the propane used in each quarterly period (based on the GCV and volume) must be measured and submitted as part of periodic data. We will then take this into account in the payment calculation.
- 13.3 Depending on the specifics of your application for registration, we may require more frequent collection of propane and other data (e.g. monthly). This more frequent verification is to help us ensure the accurate provision of data. As discussed in chapter 6, we also require the submission of an FMS Questionnaire, which includes setting out how the participant intends to measure the propane which has been added to the biomethane.
- 13.4 We will consider proposals from biomethane producers to use a reference GCV figure of propane based on existing data (e.g. from the supplier of the propane), rather than the producer having to measure the GCV every quarter. We would expect this GCV to be verified by comparison to initial samples or analysis of the actual propane used at the plant.

### Use of contaminated feedstocks

- 13.5 If solid biomass is used as a feedstock, the provisions on contamination in Regulation 71 apply. Where the gas is produced from gasification or pyrolysis, the energy content of any contamination in the biomass feedstocks will also be deducted. Please refer to the FMS guidance for more information.

### NDRHI and the Renewable Transport Fuel Obligation (RTFO) scheme

- 13.6 Since 1 April 2021, biomethane producers have been able to claim RHI support for all of the eligible biomethane or a proportion of eligible biomethane they inject in a quarterly period.<sup>78</sup> This is intended to provide a greater degree of flexibility to those who wish to participate in both the NDRHI scheme and the Department for Transport's (DfT's) Renewable Transport Fuel Obligation (RTFO). Biomethane producers will be able to claim RHI payments for a proportion of the eligible biomethane they inject in a given quarter. The remaining portion of the biomethane may, subject to DfT's criteria, be eligible under the RTFO scheme.
- 13.7 Whilst dual participation on the RTFO scheme and NDRHI scheme is supported under the NDRHI regulations, Ofgem may not make a periodic support payment in respect of any proportion of biomethane injected in a quarterly period where a Renewable Transport Fuel Certificate (RTFC) has been issued under the Renewable Transport Fuel Obligations Order 2007<sup>79</sup> for that proportion of biomethane.
- 13.8 The Renewable Transport Fuel Obligations Order 2007 ("The RTFO Order") also states that fuel claimed under its scheme cannot be counted towards another renewable energy obligation or support scheme<sup>80</sup>.
- 13.9 If a producer receives a payment via the NDRHI for biomethane that has already received RTFO support, the relevant amount must be recovered or offset against future payments by Ofgem. If any subsequent non-compliance with NDRHI obligations is found, Ofgem may also take enforcement action.
- 13.10 From 1 April 2021 all participants will have been required to provide a quarterly self-declaration to us, informing us that RHI and RTFO will not be claimed for the same

---

<sup>78</sup> Prior to 1 April, biomethane producers could only choose whether to claim RHI support for all or none of the eligible biomethane injected in a quarterly period.

<sup>79</sup> S.I. 2007/3072, amended by S.I. 2011/534, 2018/374 and 2020/1541

<sup>80</sup> The RTFO Order 2007, regulation 16(2)

biomethane. We have created two types of declarations (see Appendix 3). All participants should select, sign and submit the declaration that is relevant to their circumstances.<sup>81</sup> Please note, where a final submission to the NDRHI for a quarterly period is submitted and once payment for the submission has been made it cannot be withdrawn or amended in the future to revise the amount of gas claimed on the NDRHI.

13.11 In order to make a partial claim for the biomethane injected in a given quarter, participants will be required to provide the following information to Ofgem, as part of their usual quarterly periodic data submissions via the RHI register:

- a figure for the total amount of biomethane (in kWh) injected in that quarterly period, and
- a figure for the proportion of that biomethane for which they wish to claim RHI support.

13.12 The above figures will be taken into account when determining the amount of eligible biomethane for that quarterly period. Ofgem and DfT will be working together to validate the information provided and ensure RHI payments are not made for biomethane for which an RTF certificate has been issued. In the event that further information is required by Ofgem in order to process your claim, we will be in contact with you to request this information.

### **Further validation on interaction with the RTFO scheme**

13.13 From 1 April 2022, all registered biomethane producers are required to provide an annual, independently assured audit report (ISAE 3000 [revised] or equivalent) on their NDRHI/RTFO interaction, as a separate section of the existing Annual Sustainability Audit requirement. This is an additional administrative requirement to facilitate the effective administration of the scheme. It is a producer's preference as to whether they use the same, or different, auditors for each requirement.

13.14 Producers must submit an RTFO audit, as outlined above, in order to ensure their continued compliance with NDRHI scheme regulations. Failure to do so may result in the temporary withholding of periodic support payments, and we may decide to permanently withhold, reduce or recover payments where there has been a material or repeated failure to comply with ongoing obligations.

---

<sup>81</sup> As part of the information we will require, participants who claim under the RHI/RTFO must use the biogas/biomethane apportioning tool, or equivalent. More details on the tool can be found at section 4.139.

- 13.15 Failure to supply the RTFO section will delay the Annual Sustainability Audit process as a whole, and may result in delayed or non-payments.
- 13.16 More details on the NDRHI/RTFO interaction audit submission process can be found in, at Appendix Three. As this new requirement will take effect from 1 April 2022, those producers who are due to submit their Annual Sustainability Audit reports before this date will not be required to complete an RTFO audit section until their next Annual Sustainability Audit submission.

## 14. Ongoing scheme obligations for new solid biomass CHP systems

---

This chapter includes the ongoing obligations that apply to new solid biomass CHP systems only.

- 14.1 Participants with new solid biomass CHP systems are subject to many of the same ongoing obligations as owners of biomass and biogas plants and should therefore read all other relevant sections of this guidance (for example, fuelling and sustainability requirements). This chapter covers additional requirements only for new solid biomass CHP systems.

### Continued CHPQA certification

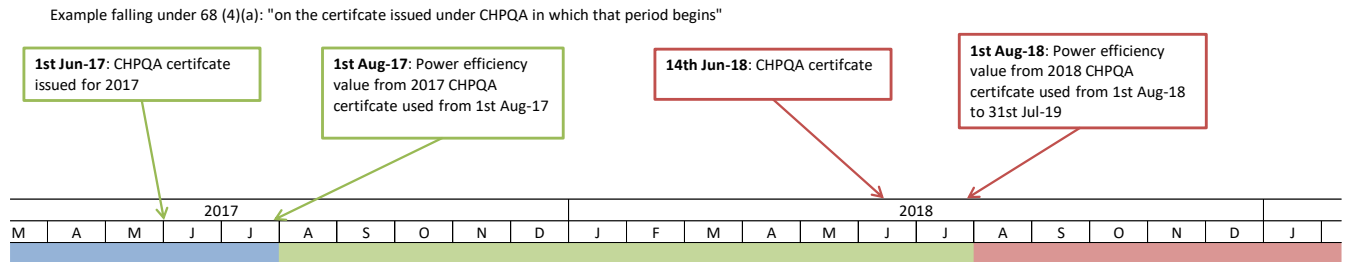
- 14.2 Participants with new solid biomass CHP systems must provide us with evidence of certification under the CHPQA (the Combined Heat and Power Quality Assurance Standard Issue 6). This should be provided to us as soon as it is available, and by no later than the end of June for each year of participation on the scheme. This information should be sent to [RHI.Periodicdata@ofgem.gov.uk](mailto:RHI.Periodicdata@ofgem.gov.uk). Participants should also report any issues they encounter with providing evidence of their renewed CHPQA certification to this e-mail address as soon as those issues are encountered.
- 14.3 During any period for which participants are unable to provide evidence of CHPQA certification the tariff rate will be reduced to the tariff that would have been applicable if the installation had never been CHPQA certified.

### Power Efficiency

- 14.4 For a new biomass CHP plant with a date of accreditation on or after 1 August 2016, there is a requirement to achieve a minimum power efficiency in order to qualify for the full biomass CHP tariff.
- 14.5 The power efficiency of a CHP system for these purposes is determined as follows:

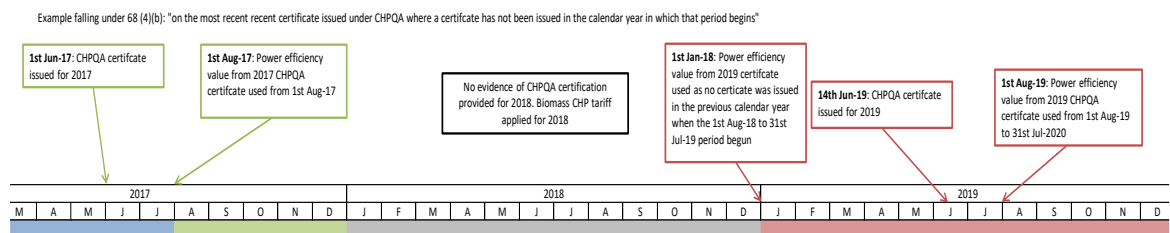
# Non-Domestic Renewable Heat Incentive

- Power efficiency is determined and fixed for each 12-month period beginning on 1 August and ending on 31 July.
- The power efficiency for all of that period is the power efficiency stated on the CHPQA certificate which is issued in the calendar year in which that period begins. The diagram below illustrates how this works in practice.



14.6 Where no CHPQA certificate is issued in a calendar year for a solid biomass CHP system, the tariff for the heat generated by it in that year will be determined as though the system had never been CHPQA certified.

14.7 Where no CHPQA certificate is issued in the calendar year where a 12-month (1 August – 31 July) period begins then, the power efficiency for any part of that period will be that stated on any CHPQA certificate issued in the following calendar year. The diagram below illustrates how this could look in practice.



14.8 If the power efficiency of a CHP system is less than the applicable power efficiency threshold (see table below) then periodic support payments must be adjusted. This means that a proportion of payments will use the tariff rate on which the system was accredited (i.e. the biomass CHP tariff) and the remainder will use the solid biomass (non-CHP) tariff. Please see Appendix 1 for an example.

**Power efficiency thresholds**

14.9 The power efficiency threshold that applies to an installation is dependent on the date of accreditation. This is summarised in the table below:

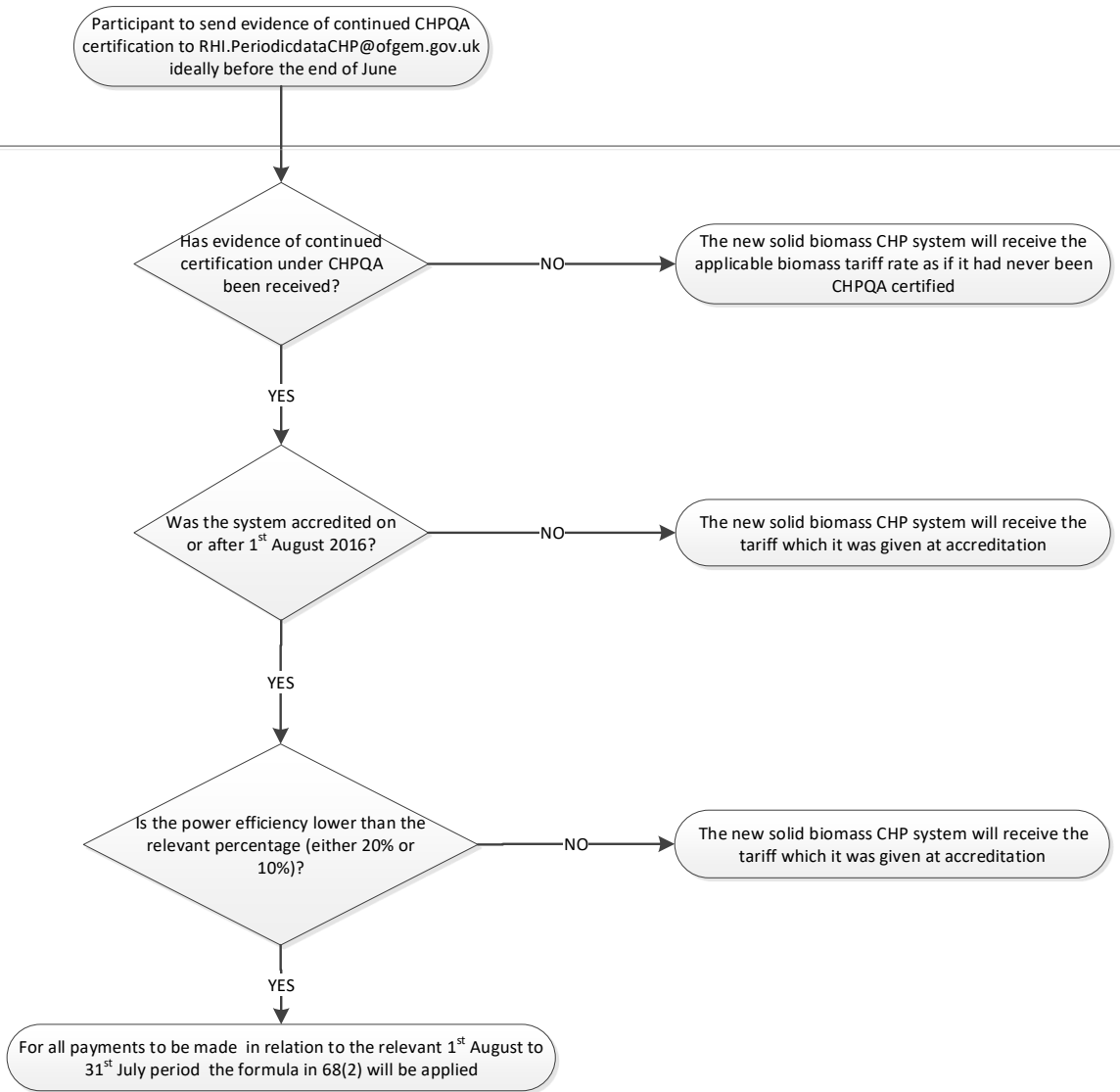
**Power efficiency thresholds**

<b>Date of accreditation</b>	<b>Threshold that applies up until 31/12/16</b>	<b>Threshold that applies from 01/01/2017</b>	<b>Threshold that applies from 22/05/2018</b>
<b>Before 01/08/2016</b>	N/A	N/A	N/A
<b>01/08/2016 to 31/12/2016</b>	20%	10% (or 20% if Ofgem have been notified by an installation prior to 1 <sup>st</sup> Feb 2017 that they wish to retain the 20% power efficiency threshold)	10% (or 20% if Ofgem have been notified by an installation prior to 1 <sup>st</sup> Feb 2017 that they wish to retain the 20% power efficiency threshold)
<b>01/01/2017 to 22 May 2018</b>	N/A	10%	10%
<b>22 May 2018 onwards</b>	N/A	N/A	20%

14.10 The diagram overleaf illustrates when evidence of renewed CHPQA certification should be provided and the typical review process Ofgem will carry out.

Participant

Ofgem E-Serve



## 15. Compliance and enforcement powers

---

This chapter outlines how we ensure compliance with the conditions of the RHI scheme, including our enforcement powers and procedural approach to non-compliance.

### Overview

- 15.1 The regulations set out the eligibility criteria and ongoing obligations that must be complied with in order to receive RHI payments.
- 15.2 We also provide resources to assist participants in complying with their scheme obligations. These include the publication of this guidance and Easy Guides, stakeholder engagement activities and the RHI customer service team, which deals with questions about the scheme.
- 15.3 As administrator of the RHI scheme, we have put in place an application process together with a system of internal checks and review procedures, which aim to ensure that only installations and producers of biomethane that meet the eligibility criteria are accredited or registered, and that these participants receive the correct levels of support as set out in the regulations.
- 15.4 We have a responsibility to ensure compliance with the rules of the Renewable Heat Incentive Scheme, and have a zero tolerance approach to fraud. We have a dedicated Counter Fraud team with a Fraud Prevention Strategy aimed at preventing, detecting and deterring fraudulent activity on the scheme.
- 15.5 In the context of the RHI, we deem fraudulent activity to be any dishonesty or misrepresentation in relation to the scheme rules and regulations. Where evidence of fraudulent activity is found, the Counter Fraud team will refer the matter to Action Fraud and the relevant police force, along with the suspension of payments and/or removal from the Non-Domestic RHI.

- 15.6 Where we suspect that participants may be failing to comply with ongoing obligations, we will take steps to determine the facts. In the first instance, we will normally contact a participant to request further information, clarification or relevant evidence. This should be sufficient in the majority of cases to establish whether a participant is compliant. However, if we are not satisfied with the outcomes of our initial enquiries, we may carry out a site inspection (see chapter 16) or, if we have reasonable grounds to suspect that a participant has failed or is failing to comply with their ongoing obligations under the scheme, instigate a formal investigation.
- 15.7 Once we are satisfied that we are in possession of the relevant facts of a case, we will decide what further action, if any, may be appropriate to deal with the matter. Our approach may include confirming that a participant is in compliance, contacting the participant informally to advise them of any non-compliance and advising them of what they should do to rectify the situation, or exercising one or more of the enforcement actions that are available to us under the regulations.
- 15.8 In deciding whether to take enforcement action, we will take into consideration all the circumstances surrounding the non-compliance, which may include, for example:
- seriousness of the non-compliance and the duration
  - whether the participant voluntarily reported the non-compliance
  - reasons why the non-compliance happened and any mitigating circumstances
  - whether there is a history of non-compliance by the participant
  - whether the participant has gained financially through the non-compliance
  - the conduct of the participant after the non-compliance has been discovered.
- 15.9 The range of enforcement actions that we may carry out under the regulations and examples of how these might be applied, are described in the rest of this chapter.

### **Withholding periodic support payments to investigate alleged non-compliance<sup>82</sup>**

- 15.10 If we have reasonable grounds to suspect that a participant has failed or is failing to comply with their ongoing obligations or that an installation has been given accreditation or a producer of biomethane for injection has been registered as a result of information which is materially incorrect, and we have been unable to resolve the matter through informal enquiries, we may conduct an investigation to find out the full facts of a case. In this case, where we require time to investigate, we have the power to temporarily withhold all or part of a participant's periodic support payments until the investigation finishes (up to a maximum of six months from the date payments were withheld).
- 15.11 Where we have applied this sanction, payments will continue to accrue but will not be paid to the participant whilst we are still investigating (subject to 14.15 below).
- 15.12 Examples of when we may decide to withhold payments while an investigation continues may include (but are not limited to): instances where we have reason to consider that information provided in an application for accreditation or registration was incorrect or where the participant may no longer own the relevant installation but has not informed us within 28 days.
- 15.13 If we do temporarily withhold periodic support payments, we will notify participants within 21 days of making that decision to let them know:
- the reason we suspect they are failing or have failed to comply with ongoing obligations, or details of the information we suspect to be incorrect, on which accreditation or registration was based.
  - the reason why we are temporarily withholding payments
  - the date from which payments will be withheld
  - the next steps in the investigation process; and
  - details of their right to request a review of our decision

---

<sup>82</sup> Regulations, Part 9, Regulation 78

- 15.14 We will provide an update on the progress of the investigation to the participant every 30 days after the date of notification, including whether or not we will continue to temporarily withhold their payments.
- 15.15 We will aim to carry out investigations in a timely manner and will not temporarily withhold a participant's periodic support payments for longer than six months. However, if a participant takes longer than two weeks to provide information that we request during our investigation starting from the date on which we requested it, the period of such delay will not count towards the six-month time limit.
- 15.16 Upon conclusion of an investigation, or after six months, whichever is the earlier, we will notify the participant of the outcome of the investigation or, if the investigation is not finished, inform them.
- 15.17 Where an investigation has been concluded within six months and we are satisfied that the participant was in (or has resumed) compliance with their ongoing obligations, we will pay those periodic support payments which have been temporarily withheld, less any proportion of such payments which we decide to permanently withhold or reduce to the extent that this is attributable to the participant's material or repeated failure to comply with their ongoing obligations, or their supply of information which is materially incorrect.<sup>83</sup>
- 15.18 Where an investigation has not been concluded within six months, we will notify the participant that the investigation is continuing. We will pay a participant those periodic support payments which we have temporarily withheld, less any portion of payments which we have decided to permanently withhold (where we are satisfied of the participant's material or repeated failure to comply with an ongoing obligation or that an installation has been given accreditation or a producer of biomethane for injection registered as a result of information which is materially incorrect). The participant will continue to receive periodic support payments in accordance with the participant's existing payment schedule until the investigation is concluded (less any portion of such payments which we have decided to permanently reduce). When the investigation is finished and we consider that the participant was in (or has resumed) compliance with their ongoing obligations under the scheme, the matter will be closed.
- 15.19 Where we are satisfied that the participant is either failing to comply with an ongoing obligation, there has been a material or repeated failure by them to comply with their ongoing obligations or that an installation has been given accreditation or a producer

---

<sup>83</sup>Regulations, Part 9, Regulation 79 and 80

of biomethane for injection has been registered as a result of information which is materially incorrect, we may take further enforcement action, and may also seek to recover payments previously made to the participant which relate to periods during which the participant was non-compliant. Such recovery may be by offsetting the amounts against any future periodic support payments or by requiring repayment of the sum due from the participant (see section 'Recouping overpaid periodic support payments' below).

- 15.20 Where an investigation has concluded and we are satisfied that the participant is either failing to comply with an ongoing obligation or there has been a material or repeated failure to comply with ongoing obligations or that an installation has been given accreditation or a producer of biomethane for injection has been registered as a result of information which is materially incorrect, we may then take further enforcement action (see below).

### **Withholding periodic support payments<sup>84</sup>**

- 15.21 Where we are satisfied that a participant is failing to comply with an ongoing obligation under the scheme or that an installation has been given accreditation or a producer of biomethane for injection has been registered as a result of information which is materially incorrect, we may temporarily or permanently withhold all or part of that participant's payments. This means that we will stop making payments to the participant.
- 15.22 Generally, we will temporarily withhold payments where the participant, is failing to comply with an ongoing obligation but is capable of rectifying this non-compliance. However, whether payments are resumed or repaid will depend on the nature of the non-compliance. Examples of this could include (but are not limited to), temporary use of heat for ineligible purposes, breaches of fuel eligibility requirements, a failure to submit periodic data within the specified timeframe or failure to provide requested information, including the annual declaration.
- 15.23 We may also temporarily withhold payments if a participant notifies us that they will be unable to comply with the scheme rules for a particular period (e.g. due to a temporary inability to source eligible fuel), but still wish to remain as a participant in the scheme.

---

<sup>84</sup> Regulations, Part 9, Regulation 79 and 80

- 15.24 When we withhold payments, within 21 days of that decision we will send the participant a notice specifying:
- where there is a failure to comply with an ongoing obligation, the respect in which the participant is failing to comply where the installation was given accreditation or the participant registered as a producer of biomethane for injection as a result of the provision of incorrect information, details of the respect in which the information was incorrect.
  - the amount of period support payments we intend to withhold in each quarterly period and the date from which these payments will be withheld.
  - where applicable, the steps that the participant must take to satisfy Ofgem that they are complying with the ongoing obligation, or, notwithstanding the provision of incorrect information, the installation should continue to be accredited, or the participant should continue to be registered.
  - the consequences of the participant failing to take the steps to satisfy Ofgem.
  - the date by which the steps referred to above must be completed and details of the participant's right to review.
- 15.25 Where we are satisfied that the participant is compliant, within 21 days of making this decision, we will take the necessary steps needed for the participant to be paid periodic support payments (but only those falling after the date of our decision).
- 15.26 A participant is not entitled to recover payments which have been withheld during a period of non-compliance.
- 15.27 However where a participant has rectified any non-compliance within 6 months notice of withholding being issued, we may exercise discretion in making payments that have been withheld due to the suspension.
- 15.28 When deciding how we exercise this discretion we will take into account the circumstances of the case including the impact of the non-compliance, if any, on the generation of eligible heat. For example, we may consider that non-compliance of delays in submitting information or the annual declaration, whilst constituting non-

compliance with ongoing obligations, may not have compromised the generation of heat which would otherwise have been eligible for support.

- 15.29 Where we do use our discretion to make a payment which we had previously withheld, we will make the payments to the participant within 28 days of being satisfied that the participant has resumed compliance with their ongoing obligations. It should be noted that if non-compliance continues for a period of six months or more from the date of withholding, we no longer have discretion to repay any payments which have been withheld.
- 15.30 If a participant has been unable to resume compliance within the specified period it is possible this may constitute a material or repeated failure by the participant to comply with an ongoing obligation, or continued provision of information which is materially incorrect. We may therefore take further enforcement action on this basis – which could include reducing periodic support payments or permanently withholding a proportion of them, or revoking accreditation or registration as set out below.

### **Permanently withhold or reduce periodic support payments<sup>85</sup>**

- 15.31 Where we are satisfied that there has been a material or repeated failure by a participant to comply with an ongoing obligation during any quarterly period, (and the periodic support payment for that quarterly period has not been paid), we may:
- permanently withhold a proportion of the periodic support payment corresponding to the proportion of the quarterly period during which the non-compliance occurred; or
  - reduce by up to 10% either the periodic support payment for the quarterly period during which the breach occurred, or the periodic support payment for the next quarterly period.
- 15.32 This would mean that the participant could receive either no periodic support payment or a reduced periodic support payment for the quarterly period they failed to comply, or the participant could have their next quarterly periodic support payment reduced.
- 15.33 Any level of reduction will be determined (based on the factors mentioned at paragraph 15.6 above and any other relevant information). Within 21 days of the

---

<sup>85</sup> Regulations, Part 9 Regulation 80

decision to permanently withhold or reduce periodic support payments, we will send a notice to the participant. The notice will specify:

- how they have failed to comply with the rules of the scheme
- the reason why the periodic support payment is being withheld or reduced
- the period that the reduction or withholding of payments is for
- the level of any reduction
- details of their right of review of our decision.

### **Revocation of accreditation or registration<sup>86</sup>**

- 15.34 Where we are satisfied that there has been a material or repeated failure by a participant to comply with an ongoing obligation, that an installation has been given accreditation or a producer of biomethane for injection has been registered as a result of information which is materially incorrect, or there has been a failure to comply with a notice issued by Ofgem,<sup>87</sup> we have the power to revoke the accreditation of an installation if the participant's failure has occurred, or to revoke the participant's registration as a producer of biomethane for injection. We also have the power to revoke accreditation for any other accredited RHI installations owned by the participant.
- 15.35 On revocation of accreditation, an installation ceases to be eligible for any further payments under the scheme.
- 15.36 Examples of cases that might warrant revocation may include (but are not limited to): providing false or materially inaccurate information in order to obtain accreditation or registration, repeated or material errors in periodic data or annual declarations, repeated or material failure to maintain equipment according to manufacturer's instructions or generating heat for the predominant purpose of increasing payments.
- 15.37 In addition, for an RHI installation that generates heat from solid biomass, where we are satisfied that i) an RHI emissions certificate is required for that plant and ii) the plant has been accredited due to materially incorrect information in that certificate, we may revoke the participant's accreditation.

---

<sup>86</sup> Regulations, Part 7, Regulation 81(1)

<sup>87</sup> Regulations, Part 7, Regulation 81(1)(c)

15.38 Any decision made on whether to revoke accreditation or registration will take into account information which we consider to be relevant, including the factors mentioned in paragraph 15.6 above.

15.39 Before revoking accreditation or registration, we will send a notice to the participant. The notice will inform the participant of:

- the reason for the intended revocation including the details of the participant's non-compliance (or the information which is materially incorrect)
- an explanation of the effect of the revocation on the participant (i.e. that they will be removed from the scheme and will not be eligible for future payments at any time, either for the one affected installation, all installations owned by the participant or for production of biomethane for injection by the participant as applicable)
- details of their right to request a review of our decision.

15.40 In addition, where we have revoked accreditation or registration from a participant, we may also refuse in the future to accredit any installations owned by that former participant or to register that former participant as a producer of biomethane for injection. Where we suspect that a participant has deliberately falsified information provided to us in order to defraud the scheme we will refer such cases to the relevant authorities for further action. Our Counter Fraud team will refer such cases to Action Fraud and the relevant police force. This may lead to a criminal prosecution, as well as to the suspension of payment and/or removal from Non-Domestic RHI.

### **Recovering overpaid periodic support payments<sup>88</sup>**

15.41 Where we are satisfied that a participant or a former participant has received a payment which exceeds their entitlement, or has received a payment whilst failing to comply with an ongoing obligation (or following such a failure), were paid as a result of providing information which was materially incorrect we may either:

- require a participant or former participant to repay some or all of the overpaid amount, or

---

<sup>88</sup> Regulations, Part 9, Regulation 83

- recoup some or all of the overpaid amount by offsetting it against future periodic support payments.

15.42 In cases where the participant remains in the scheme, we will usually offset the amount due to us against future payments to which the participant is entitled. But there may be instances (for example, where a participant is no longer in the scheme, where the amount to be repaid exceeds any future entitlement to quarterly payments or where the overpayment is significant) where we may require a participant to repay the overpaid amount directly.

15.43 As the regulations place an ongoing obligation on participants to repay any overpayment of which they are notified,<sup>89</sup> we may take enforcement action in cases where a participant who remains in the scheme fails to comply with a notice to repay. Where appropriate, we may also take action to recover the overpayment from a participant or a former participant as a civil debt owed to us.

15.44 Before taking action for repayment or to offset an amount owed to us against future payments, we will send a notice to the participant. The notice will specify:

- the sum we are seeking to recover
- the basis on which that sum is calculated
- whether the specified sum must be repaid or offset
- where applicable, the date by which the sum must be repaid
- where applicable, the amount which will be offset in each quarterly period and the time it will take for the sum to be recovered
- details of the participants or former participants right to request a review of our decision

15.45 We will usually seek to recover an overpayment either by offsetting it against the full amount of the participant's next payment and all subsequent payments until the amount has been repaid, or by requesting payment in full within 28 days of the issue of a notice to repay. However if an overpayment to a participant has resulted from an error by us, we will seek to agree with the participant an appropriate schedule for repayment of the sum due, which may include the ability to repay the amount by instalment or through offsetting the amount against future payments over a longer period. Where a participant considers that repayment of a previous overpayment is

---

<sup>89</sup> Regulations, Part 3, Regulation 43(o)

likely to result in significant hardship, they should contact us to discuss as soon as possible after receiving a notice to repay.

### **Revocation of sanctions<sup>90</sup>**

- 15.46 We may revoke a sanction which we have previously imposed on a participant. We may do so where there was an error involved when the sanction was originally imposed, or where it is otherwise just and equitable to do so.
- 15.47 We may also revoke a sanction as a result of a current or former participant's successful request for review. Within 21 days of the decision to revoke a sanction, we will send a notice to the participant. The notice will specify:
- the sanction which has been revoked,
  - the reason for the revocation
  - what actions we propose to take relating to any loss of periodic support payments incurred by the participant due to the sanction (e.g. where we had suspended, withheld or reduced payments), including timescales for doing so
  - details of whom they may speak to if they are not satisfied with how we propose to deal with any loss of payment.

### **Evidence of criminal activity**

- 15.48 Ofgem takes a zero tolerance approach to fraud. A dedicated Counter Fraud team carries out activities to detect, prevent and deter fraudulent activity on the Non-Domestic RHI. Irrespective of any action we may take in relation to compliance, if we uncover evidence of possible criminal conduct such as fraud, the matter will be dealt with by our Counter Fraud team and we will refer cases to Action Fraud and the relevant policy authority. This may lead to criminal prosecution, as well as the suspension of payment and/or removal from the Non-Domestic RHI.

---

<sup>90</sup> Regulations, Part 9, Regulation 48

## 16. Inspection and audit powers

This chapter covers how we audit and inspect installations for which accreditation has been applied for or granted under the RHI scheme, as well as guidance on how we audit facilities operated by producers of biomethane.

- 16.1 We (or agents authorised on our behalf), will carry out a programme of audits<sup>91</sup> of accredited RHI installations and biomethane facilities (and associated infrastructure) on an ongoing basis. We may also inspect during the application process in order to verify that an installation should be accredited or that a biomethane producer should be registered. The main purpose of these audits is to encourage compliance with the regulations by identifying where participants are failing to meet their ongoing obligations. Audits also help to safeguard the scheme against fraud. Audits may be conducted as site inspections or desk-based reviews.

### Audit of accredited RHI installations

- 16.2 Our audit programme will cover installations selected on the basis of:
- specific concerns which may have arisen e.g. as a result of data submitted, concerns raised by our staff or following a report made by a third party
  - risk-based factors determined by us which may include, for example, the magnitude of payments claimed, the complexity and technology type of the installation and results of any previous audits; and
  - random sampling across all installations.
- 16.3 We may request entry in order to undertake one or more activities. During a site inspection, the inspector will gather information that will enable us to check that information provided by a participant during accreditation was accurate and that the installation has been correctly accredited. This will include evidence to enable us to assess compliance with a participant's ongoing obligations. The inspector may also verify meter readings and that periodic data provided to Ofgem is accurate so that we are able to ensure that the correct payments have been and are being made to the participant. As part of the inspection, the inspector may take samples for

---

<sup>91</sup> Regulations, Part 9, Regulation 85

analysis away from the premises and may also (if appropriate) take photographs, measurements, video or audio recordings.

- 16.4 For desk-based reviews, we may ask participants to send in particular documentation for verification. Participants will be required to respond within the timescales specified in the request.
- 16.5 Participants must keep appropriate records to enable an inspector to verify all of the periodic data which the participant has provided to us. Participants should also keep all documentation supporting their application for accreditation as this may also be verified during an inspection visit or desk-based review.

### **Audits for biomethane producers**

- 16.6 As outlined above, we may request entry to inspect equipment used to produce biomethane (and associated infrastructure) in order to undertake one or more of the following activities: verifying compliance with ongoing obligations and ensuring general compliance (i.e. no other contravention of the regulations); verifying meter readings; taking samples (and removing them for analysis) and taking photographs, measurements, video or audio recordings.
- 16.7 Biomethane producers must keep all documentation about the production and injection of biomethane as it may be requested to be sent in for scrutiny as part of our desk-based reviews.
- 16.8 In addition, in order to encourage compliance with the scheme, we may periodically require biomethane producers to provide an independent, third-party verification of their biomethane production, to confirm that the information provided to us is correct and that the biomethane has come from renewable sources

### **Provision of access for site inspections**

- 16.9 Before an installation is accredited, we have the right to conduct a site inspection in order to satisfy ourselves that it should be accredited<sup>92</sup> Before a biomethane producer is registered we have the right to inspect any equipment which is being

---

<sup>92</sup> Regulations, Part 3, Regulation 30(4).

used to produce the biomethane (including equipment used to produce the biogas from which the biomethane is made)<sup>93</sup> Once accredited or registered, participants have an ongoing obligation to provide reasonable access to us for the purposes of inspection in accordance with Part 9 of the regulations <sup>94</sup>

- 16.10 In instances where eligible heat use occurs on third-party premises not owned or controlled by the participant, the participant will be required, as a condition of accreditation, to ensure access (by contractual or other means) for us (or our authorised agents) to any relevant premises where the installation is located in order to inspect the heating installation, and also to any non-domestic premises that form part of the heat distribution system served by the installation for the purpose of verifying eligible heat use. We may also require you to provide confirmation that domestic premises receiving heat from the heat distribution system are domestic and do not have ineligible uses.
- 16.11 We will conduct inspection visits at a reasonable hour (this will generally be between 9am – 5pm, Monday – Friday). In order to simplify access and ensure availability of key personnel and data, we will normally give prior notice of site inspections. However, there may be occasions when we feel it is appropriate to conduct unannounced site inspections, for which we reserve the right to do so.
- 16.12 Where a participant unreasonably refuses an inspector access to an installation, this may constitute a breach of the participant’s ongoing obligations. As a result, we may take the decision to either launch a formal investigation (which may involve temporary withholding of a participant’s payments), or to take other enforcement action (see chapter 15). It should be noted that where we are assessing the appropriateness of any enforcement action, cooperation during inspections and any related investigations is one of the factors which we may take into account.
- 16.13 If a participant unreasonably refuses our inspector access, we will send the participant a notice within 21 days. The notice will inform the participant of the reason why we consider the refusal to be unreasonable and the consequences of this (including potential sanctions). We will also inform them of their right to request a review of our decision.<sup>95</sup>

---

<sup>93</sup> Regulations, Part 3, Regulation 32(5)

<sup>94</sup> Regulations, Part 4, chapter 3, Regulation 43(i).

<sup>95</sup> Regulations, Part 10, Regulation 86(2)

### **Outcome of the audit process**

- 16.14 Following an audit, we will write to the participant concerned to outline any issues identified by the audit and to detail the actions required of them to rectify the situation. The participant is then expected to address these issues and report to us. Depending on the nature of the issues identified and the response of the participant, we may take the decision to either launch a formal investigation (which may involve a temporary withholding of a participant's payments) or to take other enforcement action (see chapter 15).

## 17. Dispute resolution

---

This chapter covers:

- how to request a review of decisions made by us in the exercise of our functions under the regulations
- how to raise a complaint because you are unhappy with the way we have treated you or how we operate

### General RHI queries and complaints

- 17.1 General queries about our functions under the regulations should be referred to the RHI operations team in writing or by telephone following the process detailed in volume 1, chapter 1.
- 17.2 If you are unhappy with how you have been dealt with, how we have performed, how we operate or the way in which we have reached a decision, you may lodge a complaint with us using our general complaints handling process (Ofgem complaints process <sup>96</sup>).
- 17.3 Complaints about MCS installation companies should be made to the installation company, relevant MCS certification body or the Trading Standards Institute (Trading Standards Institute - Home page<sup>97</sup>) as appropriate. RECC Assurance's complaints process may also be referred to.<sup>98</sup>

### Statutory review of decisions

- 17.4 The regulations entitle an affected person to request a statutory review of a decision made by us in carrying out our functions under the regulations.<sup>99</sup> However, to be entitled to this statutory review, an affected person must ensure that we receive their request for review within 28 days of receipt of the decision notification (made by us in carrying out our functions under the regulations) they wish to be reviewed (i.e. within 28 days of the original decision).

---

<sup>96</sup> [http://www.ofgem.gov.uk/About%20us/Documents1/14751\\_complaint.pdf](http://www.ofgem.gov.uk/About%20us/Documents1/14751_complaint.pdf)

<sup>97</sup> <http://www.tradingstandards.gov.uk/>

<sup>98</sup> <http://www.recc.org.uk/monitoring/complaints>

<sup>99</sup> Regulations, Part 10, Regulation 86.

17.5 A statutory review may be requested for the original decision made by a member of the RHI operational team. However, before requesting a statutory review, the affected person should consider the following:

- it is appropriate that an affected person should instigate a statutory review only where they consider that they have already made available to the original decision maker all potentially relevant evidence, information and representations for their consideration
- the decision of the statutory review officer (SRO) is final and will not be subject to further internal review.
- Requests for a Statutory review of a decision should be made in writing, clearly marked as an RHI STATUTORY REVIEW, and emailed to [rhi.dispute@ofgem.gov.uk](mailto:rhi.dispute@ofgem.gov.uk), or sent by post to:

**Ofgem Complaints  
Commonwealth House  
32 Albion Street  
Glasgow  
G1 1LH**

17.6 The affected person should specify who they are, the decision they wish us to review and the grounds on which they are requesting a review. They should also include their unique RHI reference number and any review reference number, where applicable. The request must be signed by or on behalf of the affected person.

17.7 A letter of acknowledgement will be sent to the affected person within 2 working days of us receiving the request for statutory review.

17.8 The decision will be reviewed by the SRO. The SRO will be of equal or greater seniority to the original decision maker and will not have been involved in the events leading to the decision. The statutory review will be based on all the evidence, information and representations submitted by the affected person to the original decision maker. In addition, we may request such information and declarations about the information in the affected person's possession as we require to determine the review.

17.9 The SRO will aim to reach a decision within 20 working days. If it is not possible to do so in that time, the SRO should provide the affected person with an update within

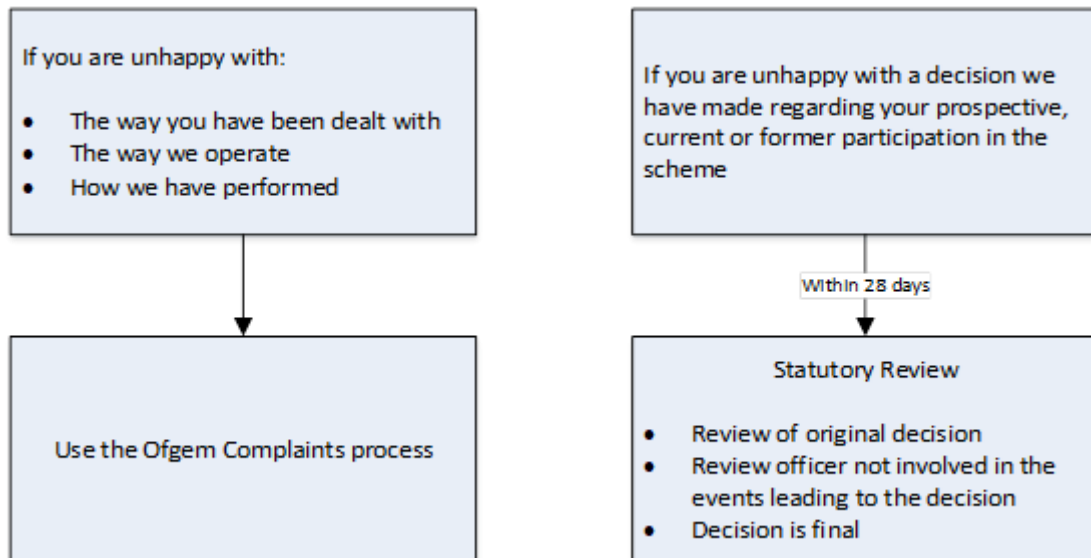
this time. The update will give a timescale (normally 20 working days) for when we will next be in contact about the review request. Within 21 days of the SRO reaching their decision, they will write to the affected person (and any other person whom we believe to be affected by the decision), to inform them of the statutory review decision with reasons.

- 17.10 For statutory reviews of decisions which we undertake, the SRO can make the following four decisions:
- revoke or vary the decision
  - confirm the decision
  - vary any sanction or condition that had been imposed, or
  - replace any sanction or condition that had been imposed with one or more alternative sanctions or decisions
- 17.11 Affected persons should note that the statutory review decision is final and no further Ofgem review process is available. Should the affected person be dissatisfied with the SRO's response, they may take their complaint to the Parliamentary and Health Service Ombudsman who carries out independent investigations into complaints about public bodies. Details of how to make a complaint to the Parliamentary and Health Service Ombudsman can be found on their website at [www.ombudsman.org.uk](http://www.ombudsman.org.uk).

### Costs

- 17.12 All affected persons should note that they will be responsible for meeting their own costs when requesting a review from us or taking a case to the Parliamentary Ombudsman.

**Figure 1: Overview of the RHI complaint and Statutory Review Process**



## Appendix one

### Overview

This appendix includes worked payment examples for different installation types that can be accredited under the RHI. Payments for installations are broadly calculated by multiplying the applicable tariff by the Eligible Heat Output (EHO) generated in the relevant quarterly period.

The metering classification of your installation will determine the way in which the EHO generated by your installation (or the amount of biomethane you have produced) is calculated. Each installation is classed as 'either 'standard' or 'multiple' for metering purposes.

Your classification determines what 'quantities' you have to measure in order for us to be able to calculate your EHO. These quantities are set out in the table below:

<b>EHO:</b>	<b>Eligible Heat Output</b>
<b>HGBI:</b>	Heat Generated by the Eligible Installation
<b>THG:</b>	Total Heat Generated by all plants supplying heat to the heating System
<b>HUEP:</b>	Heat Used for Eligible Purposes
<b>THU:</b>	Total Heat Used on the System for Eligible and Ineligible Purposes
<b>HSBG:</b>	Heat Supplied to the Biogas Production Plant

The acronyms in the table above are used in the worked examples below (note: all values are in kWhth).

### Worked examples

**(Please note the tariff rates in these examples are illustrative only)**

#### Installations with 'standard' metering arrangement

##### ***Example 1 and 2: Calculation for installations with 'standard' metering arrangements***

#### **Calculation for installations with 'standard' metering arrangements:**

The Eligible Heat Output (EHO) can be calculated in two different ways depending on metering arrangements of the installation in question.

Calculation (1) is applicable to installations that have **no ineligible heat uses**. In this example, **HGBI** refers to the amount of heat generated by eligible installation in that quarter.

Calculation (2) is applicable to installations that have **no additional ineligible heat generating plants**. In this example, **HUEP** refers to the amount of heat used for eligible purposes in that quarter.

<p><b>(1) Payment = Tariff Level × HGBI</b></p> <p>System type: Small biomass boiler                  System capacity: 10 kWth                  Tariff rate: £0.0285                  (2.85 pence)                  HGBI: 6,570 kWth</p> <p>Payment= 0.0285 x 6570                  = £187.25</p>
<p><b>(2) Payment = Tariff Level × HUEP</b></p> <p>System type: Medium biomass boiler                  System capacity: 220 kWth                  Tariff rate: £0.0532                  (5.32 pence)                  HUEP: 175,000 kWth</p> <p>Payment= 0.0532 x 175000                  = £9310</p>

**Installations with ‘multiple’ metering arrangements**

**Example 3 and 4: Calculation for installations using ‘multiple’ metering for RHI payment purposes**

**Calculation for installations using ‘multiple’ metering for RHI payment purposes**

The Eligible Heat Output (EHO) can be calculated in two different ways depending on metering arrangements of the installation in question.

Calculation (3) is applicable to installations with metering arrangements that allow **HGBI**, **HUEP** and **THG** to be quantified.

Calculation (4) is applicable to installations with metering arrangements that allow **HGBI**, **HUEP** and **THU** to be quantified.

**(3) Payment = Tariff Level x HUEP X (HGBI/THG)**

$$\text{Payment} = \text{Tariff Level} \times \text{HUEP} \times \frac{\text{HGBI}}{\text{THG}}$$

**System type:** Ground Source Heat Pump  
**System capacity:** 200 kWth  
**Tariff rate:** £0.087 (8.7 pence)  
**HGBI:** 160,000 kWth  
**HUEP:** 290,000 kWth  
**THG:** 340,000 kWth  
**EHO:** 136470.588 kWth

$$\begin{aligned} \text{Payment} &= \pounds 0.087 \times 290,000 \times \left( \frac{160,000}{340,000} \right) \\ &= \pounds 11,872.94 \end{aligned}$$

**(4) Payment = Tariff level x HGBI X (HUEP/THU)**

**System type:** Large biomass boiler (CHP)  
**System capacity:** 1500 kWth  
**Tariff rate:** £0.041 (4.1 pence)  
**HGBI:** 2,500,000 kWth  
**HUEP:** 2,000,000 kWth  
**THU:** 3,500,000 kWth  
**EHO** 1428571.43 kWth

$$\begin{aligned} \text{Payment} &= 0.087 \times 250,000 \times \left( \frac{200,000}{350,000} \right) \\ &= \pounds 58,571.43 \end{aligned}$$

## Multiple metering using heat loss calculation

If a participant provides a Quarterly Heat Loss Figure (QLHF) in place of adding an additional meter is automatically accounted for within the formula periodically.

### **Example 5: Multiple metering where a heat loss calculation has been used**

A quarterly heat loss figure (**QLHF**) will be accounted for within the formula as appropriate. In this example it is being deducted from the **HUEP**.

$$\text{(5) Payment} = \text{Tariff Level} \times (\text{HUEP} - \text{QLHF}) \times \left( \frac{\text{HGBI}}{\text{THG}} \right)$$

<b>System type:</b>	Medium biomass boiler
<b>System capacity:</b>	225 kWth
<b>Tariff rate:</b>	£0.051 (5.1 pence)
<b>HGBI:</b>	180,000 kWth
<b>HUEP:</b>	280,000 kWth
<b>THG:</b>	280,000 kWth
<b>QLHF:</b>	40,000 kWth
<b>EHO:</b>	154285.71 kWth

$$\text{Payment} = \pounds 0.051 \times (280,00 - 40,000) \times (180,000 / 280,000) = \pounds 7868.57$$

## Payment calculation for biogas systems

For biogas systems the formula needs to take account of the heat delivered to the biogas production plant which produced the biogas combusted in the quarterly period.

### Example 6: Biogas system with multiple metering arrangements

#### Biogas system with multiple metering arrangements

The heat supplied to the biogas plant (**HSBP**) is deducted from the amount of heat generated by the installation that is used for eligible purposes.

$$(6) \text{ Payment} = \text{Tariff Level} \times \left\{ \left[ \text{HUEP} \times \left( \frac{\text{HGBl}}{\text{THG}} \right) \right] - \text{HSBP} \right\}$$

<b>System type:</b>	Medium biogas combustion plant
<b>System capacity:</b>	225 kWth
<b>Tariff rate:</b>	£0.059 (5.9 pence)
<b>HGBl:</b>	180,000 kWth
<b>HUEP:</b>	280,000 kWth
<b>THG:</b>	280,000 kWth
<b>HSBP:</b>	40,000 kWth
<b>EHO:</b>	140000 kWth

$$\text{Payment} = £0.087 \times \left\{ \left[ 280,000 \times \left( \frac{180,000}{280,000} \right) \right] - 40,000 \right\} = £12180$$

## Calculating tiered payments

A two-tier tariff has been applied for small (<200kW) and medium (≥200kW but <1MW) scale biomass installations, and ground and water source heat pump installations accredited on or after 21 January 2013. This means that ground and water source heat pumps accredited from 21 January 2013 started receiving the new tiered tariff from 28 May 2014.

This tariff structure operates on a 12-month basis, starting with the date of accreditation or its anniversary. The regulations specify that during that 12-month period, an initial amount of heat generated by the installation up to the equivalent of 1,314 hours (15% of a year) or 3.066 hours (35% of a year) of an installation's installed heating capacity will be payable at the (higher) Tier 1 tariff; dependent on the date of accreditation and technology type. Any further heat generated during that 12-month period will be payable at the (lower) Tier 2 tariff. At the start of the next 12-month period, the initial amount of heat will again be payable at the higher Tier 1 tariff. We consider the 'initial heat' threshold to be crossed when the EHO exceeds the tier threshold.

**Example 7: Calculating tiered payments**

**Installation with standard metering arrangements**

**Quarter One**

**System type:** Medium biomass boiler  
**System capacity:** 400 kWth  
**Tier 1 tariff:** 5.1p  
**Tier 2 tariff:** 2.2p

**Tier threshold:** 1,314 hours x 400kWth  
 = 525,600kWth

**HGBI in quarter one:** 310,000 kWth

**In this quarter, the EHO value is below the tier threshold of 525,600kWth**

➤  $\text{Payment} = \text{Tariff level} \times \text{EHO}$   
 $= 0.051 \times 310,000 \text{ kWth}$   
 $= \text{£}15810.00$

**Quarter Two**

**HGBI in quarter two: 290,000 kWth**

**Now we need to take account of the cumulative EHO in this year:**

$$\begin{aligned} \text{Cumulative EHO} &= \text{EHO in quarter one} + \text{EHO in quarter two} \\ &= 310,000 + 290,000 \\ &= 600,000 \text{ kWth} \end{aligned}$$

**This EHO has breached the Tier 1 threshold, so we now need to do two calculations to determine the units to be paid at Tier 1 and Tier 2.**

**Tier 1 units (remaining units to be paid at Tier 1)**

$$\begin{aligned} &= 525,500 - 310,000 \\ &= 215,600 \text{ kWth} \end{aligned}$$

**Tier 2 units (units to be paid at Tier 2)**

$$\begin{aligned} &= 600,000 - 525,600 \\ &= 74,400 \text{ kWth} \end{aligned}$$

**Tier 1 calculation:**  $\text{Payment} = 0.051 \times 215,600 \text{ kWth}$   
 $= \text{£}10,995.60$

**Tier 2 calculation:**

$$\begin{aligned} \text{Payment} &= 0.022 \times 74,400 \text{ kWth} \\ &= \text{£}1,636.80 \end{aligned}$$

**Total payment:** £10,995.60 + £1,636.80 = £12,632.40

## Quarter Three

**EHO in quarter three: 300,000 kWhth**

**Now that the threshold has been passed, all heat is payable at Tier 2.**

Payment = Tariff level × HGBI  
 = 0.022 × 300,000 kWhth  
 = £6600.00

## Quarter Four

Quarter four would proceed on a similar basis to quarter three. But the next quarter would be the start of a new RHI year for that participant, and the cumulative eligible heat total would be reset to zero with initial EHO up to 525,600kWhth in that year earning payments at the Tier 1 rate.

### **Example 8: Payment calculation for new solid biomass CHP systems**

If you have a new solid biomass CHP system please read chapter 13: "*Ongoing scheme obligations for new solid biomass CHP systems,*" before examining this example as this chapter will provide the necessary context. In particular it explains how the power efficiency value (variable 'B' below) is determined.

This formula is relevant for new solid biomass CHP systems with a tariff start date on or after 1 August 2016, and where the power efficiency of the system is lower than the relevant percentage (for this example a relevant percentage of 10% has been used). The periodic support payment will be calculated using the following formula:

$$(A \times B) + ((1 - B) \times (C \times D)) + E$$

where—

- (a) A is the periodic support payment calculated in accordance with regulation 67 or 68 in respect of the heat generated using solid biomass in the CHP system which meets the requirements of regulation 13;
- (b) B is the figure, expressed as a decimal, derived from multiplying the power efficiency of the CHP system by 10;
- (c) C is the tariff, calculated in accordance with regulation 59, that would apply if the CHP system ceased to be certified under CHPQA;
- (d) D is the kWhth of heat generated using solid biomass in the CHP system which meets the requirements of regulation 13, calculated in accordance with regulation 67(2)(b) or 68(2)(b);
- (e) E is the sum of the periodic support payments, calculated in accordance with regulation 67 or 68, in respect of any heat generated by the installation using biogas, biomass contained in waste, or other biomass used in a CHP system where regulation 12 applies.

<b>System type:</b>	Solid Biomass CHP
<b>System capacity:</b>	1,500 kWth
<b>Solid Biomass CHP tariff:</b>	4.17p/kWh
<b>Large Solid Biomass tariff:</b>	2.03p/kWh

**Power efficiency threshold:** 10%

**Power efficiency of CHP:** 8%

**Heat generated by the installation that is used for eligible purposes:**  
**2,792,250kWth**

$$A = 0.0417 \text{ £/kWh} \times 2,792,250 \text{ kWh} = \text{£}116,436.83$$

$$B = 0.08 \times 10 = 0.8$$

$$D = 2,792,250 \text{ kWh}$$

$$E = 0$$

$$\text{Payment} = (116,436.83 \times 0.8) + ((1 - 0.8) \times (0.0203 \times 2,792,250))$$

$$= \text{£}93,149.46 + \text{£}11,336.54$$

$$= \text{£}104,486.00$$

\*Please note that the payment formula in regulation 68 was first introduced on 1 August 2016, and was subsequently amended on 1 January 2017 and then the 22 May 2018. The payment formula above is the amended version that existed on the 1 January 2017. For current and historical CHP power efficiency thresholds, please refer to the power efficiency thresholds table on page 77.

**Example 9: Payment calculation for shared ground loops system comprised of deemed and metered heat pumps**

**Worked example**

<b>System type:</b>	Ground source heat pumps with a shared ground loop
<b>System capacity:</b>	180kWth
<b>Consists of:</b>	4 x 45kWth ground source heat pumps. 1 of which is eligible for deemed payments
<b>Large GSHP tariff:</b>	Tier 1: 9.24p /kWh Tier 2: 2.75p/kWh

$$\text{Tier threshold} = 1,314 \text{ hours} \times 180 \text{ kWth} = 236,520 \text{ kWth}$$

This example is of a quarter 4 period. The following totals are assumed to have been generated and paid on the Tier 1 tariff in the previous 3 quarters:

**200,000kWth for the installation as a whole**

**22,500kWth for the single deemed heat pump**

**Quarterly deemed heat pump component**

Heat demand figure listed on EPC = 36,000kWth. Heat demand limit for the year for a ground source heat pump in a shared ground loop system is 30,000kWth therefore 7,500kWth will be paid on per quarter including this 4<sup>th</sup> quarter.

### **Quarterly metered heat pump component**

**Heat Generated by 3 remaining heat pumps = 50,000kWth**

**HGBI in 4<sup>th</sup> quarter = 7,500kWth + 50,000kWth = 57,500kWth**

**Total HGBI for year = 257,500**

As the total heat produced in the previous 3 quarters was 200,000kWth and the tier 1 threshold is 236,520kWth, 36,250kWth will be paid at tier 1 in the 4<sup>th</sup> quarter and the remainder on tier 2.

### **Total quarterly payment**

#### **Tier 1 units**

$36,520 \times \text{£}0.0924 = \text{£}3,374.45$

#### **Tier 2 units**

$20,980 \times \text{£}0.0275 = \text{£}576.95$

**Total 4<sup>th</sup> quarterly payment = £3,951.40**

## Appendix two - Declaration for Biomethane Producers: NDRHI and RTFO Interaction

The following declarations are designed for biomethane producers registered under the NDRHI. The relevant declaration must be submitted at the same time as the periodic data each quarter. This will then be used by Ofgem as appropriate, alongside other evidence and supporting information, to determine whether payments can be made.

### **Declaration 1 should be completed by biomethane producers who are not claiming under the RTFO**

I, the authorised signatory for RHI [insert installation name and number] confirm that for [quarterly period] I have not and will not make a claim under the Renewable Transport Fuel Obligation.

### **Declaration 2 should be completed by biomethane producers who intend to claim under both RHI and RTFO in any given quarter:**

I, the authorised signatory for RHI [insert installation name and number] am claiming [insert amount] kWh of injected biomethane for the period [insert dates from/ to] under the NDRHI scheme.

The remaining [insert amount] kWh will be claimed under the Renewable Transport Fuel Obligation Scheme (RTFO) by [insert name].

I have attached the following documents to support the data submission:

- Biogas/Biomethane apportioning tool, or equivalent, to be utilised to ascertain the feedstock percentage of make up of RHI and RTFO gas
- Biomethane injection data and applicable supplementary heat - for the validation of RHI payments

I understand and accept this represents my final submission to the NDRHI for this quarterly period and that once payment for this submission has been made it cannot be withdrawn or amended in the future to revise the amount of gas claimed on the NDRHI.

I confirm that I understand and accept that I will not be eligible to claim under both the NDRHI scheme and the RTFO for the same unit of biomethane and that to the best of my knowledge and belief the information supplied in this declaration form and the supporting documentation is accurate.

[Signed]

Authorised Signatory

## Appendix three – Guidance for producers on providing further validation of NDRHI and RTFO interaction

---

### 1. Introduction

#### **Purpose of this document:**

- 1.1. This guidance describes the process to be followed by biomethane producers claiming quarterly NDRHI support, and their auditors, when presenting additional evidence of NDRHI/RTFO interaction as a section of their Annual Sustainability Audit Report.

#### **Legislation**

- 1.2. You should read this document alongside this Volume 2: 'Ongoing Obligations and Payments', of our NDRHI guidance, and our Renewable Heat Incentive: Sustainability Audit Guidance for Participants and Auditors<sup>100</sup> and Sustainability Self-Reporting Guidance<sup>101</sup>, which contain more details on the applicable legislation and obligations in this area.
- 1.3. Biomethane producers claiming for quarterly support under the NDRHI must comply with all relevant requirements and ongoing obligations specified in the RHI Regulations<sup>102</sup>. Ongoing obligations are outlined in this Volume 2 of Ofgem's 'Ongoing Obligations and Payments' guidance for NDRHI participants.
- 1.4. These obligations state (at Chapter 13), that whilst dual participation on the RTFO scheme and the NDRHI scheme is supported under the NDRHI Regulations, Ofgem may not make a periodic support payment in respect of any proportion of biomethane injected in a quarterly period where a Renewable Transport Fuel Certificate (RTFC) has been issued under the Renewable Transport Fuel Obligations (RTFO) Order 2007<sup>103</sup> for that proportion of biomethane.

---

<sup>100</sup> [Renewable Heat Incentive: Sustainability Audit Guidance for Participants and Auditors \(ofgem.gov.uk\)](#)

<sup>101</sup> [Sustainability Self-Reporting Guidance \(ofgem.gov.uk\)](#)

<sup>102</sup> The Renewable Heat Incentive Scheme Regulations 2018 (as amended): [The Renewable Heat Incentive Scheme Regulations 2018 \(legislation.gov.uk\)](#)

<sup>103</sup> The Renewable Transport Fuel Obligations Order 2007 (as amended): [The Renewable Transport Fuel Obligations Order 2007 \(legislation.gov.uk\)](#)

- 1.5. The RTFO order, administered by the Department for Transport, also states that fuel claimed under its scheme cannot be counted towards another renewable energy obligation or support scheme<sup>104</sup>.
- 1.6. If a producer receives a payment via the NDRHI for biomethane that has already received RTFO support, the relevant amount is highly likely to be recovered or offset against future payments by Ofgem. If any subsequent non-compliance with NDRHI obligations is found, Ofgem may also take enforcement action.

### **Process Overview**

- 1.7. Biomethane producers must have their NDRHI feedstock information validated by an independent auditor via an Annual Sustainability Audit Report. It is the responsibility of the auditor to perform the assurance engagement and complete a written report.
- 1.8. The objective of the further validation requirement is for claimants to demonstrate, via an independent auditor, that they are complying with their legislative and regulatory obligations to prevent dual claims for their biomethane, as referenced above at sections 1.3 to 1.6.
- 1.9. This evidence (see Evidence Summary, below) should be submitted as a separate section of the Annual Sustainability Audit Report and the auditor should provide assurance as to the accuracy, reliability, and robustness of NDRHI/RTFO interaction by producers. This is necessary for effective scheme administration; it is an administrative requirement falling within Regulation 43(t) of the [NDRHI Regulations].
- 1.10 Producers will therefore submit their quarterly NDRHI claims and quarterly declaration<sup>105</sup> forms on NDRHI/RTFO interaction to Ofgem as before. Their Annual Sustainability Audit Reports, should be submitted to Ofgem by the usual process - through the RHI Register. This further assurance requirement, to be submitted with their Annual Sustainability Audit Reports, takes effect from 1 April 2022.

---

<sup>104</sup> Renewable Transport Fuel Obligations Order 2007, article 16(2)(a)(ii) [The Renewable Transport Fuel Obligations Order 2007 \(legislation.gov.uk\)](#).

<sup>105</sup> More details on declaration forms can be found in this NDRHI, Guidance Volume 2, 'Ongoing obligations and payments', at Chapter 13 and at Appendix two.

**Please note:** The reporting year for the annual RTFO audit must, as with the Annual Sustainability Audit it will be submitted with, correspond with the annual cycle that a participant has been on with the scheme (i.e. not the financial year).

1.11. The onus is on the producer to comply with the relevant regulatory requirements and scheme obligations concerning NDRHI/RTFO interaction and the additional audit information will give Ofgem assurance that the supplier is both carrying out the necessary activities and has suitably robust processes in place.

1.12. The producer must retain the evidence referred to in the audit for the duration of their accreditation to the NDRHI scheme.

## **2. Annual Sustainability Audit Report: additional reporting requirement on NDRHI/RTFO interaction**

2.1. As with the current Annual Sustainability Audit Report, biomethane producers should have the additional information prepared by an independent auditor in accordance with the requirements of limited assurance engagements prescribed in ISAE 3000 (revised) or equivalent<sup>106</sup>.

2.2. The producer will be responsible for appointing an auditor and agreeing an appropriate scope of work. Producers need to engage fully with their auditors and have a robust process in place to provide the additional validation of NDRHI/RTFO interaction required to be supplied with the Annual Sustainability Audit Report.

2.3. The Annual Sustainability Audit Report, complete with this additional information, should then be submitted to Ofgem by the producer, with the relevant supporting evidence.

2.4. Ofgem reserves the right to request further evidence relating to the additional information on NDRHI/RTFO interaction that is provided.

2.5. The NDRHI/RTFO audit section should include the following:

---

<sup>106</sup> At the time of writing Ofgem is not aware of any equivalent standards. Should the operator and their auditor wish to make use of one, they should contact Ofgem in advance for confirmation of its acceptability

- a) NDRHI/RTFO audit section title
  - b) Auditor's details and qualifications (if different from Sustainability Audit Report)
  - c) Scope of work and methodology
  - d) Evidence summary
  - e) Description of supporting evidence / documents
  - f) Details of fraud or error prevention measures
- 2.6. The new section should be added to the existing Annual Sustainability Audit Report and submitted as usual to Ofgem within three months after each anniversary of the date on which the participant was first registered with the NDRHI as a producer of biomethane.
- 2.7. The assurance provided in the NDRHI/RTFO section by the independent auditor should adequately demonstrate to Ofgem that the producer has taken all reasonable steps to ensure that:
- a) dual claims for the same biomethane are not taking place on the NDRHI
  - b) the claims can be validated

### **Auditor's details**

- 2.8. Details should be provided about who has performed the NDRHI/RTFO interaction auditing process, including the assurance standard to which the agreed upon procedures were performed to.
- 2.9. It is a producer's preference as to whether they use the same, or different, auditors for the Annual Sustainability Audit and the RTFO audit.

### **Scope of work and methodology**

- 2.10. The report should include a review of the systems and controls the producer has in place in order for all reasonable steps to be taken to ensure all the biomethane they claim for against the NDRHI does not go on to be claimed against the RTFO.
- 2.11. It should also give an overview of how likely it is that the information they produce is accurate and reliable.

- 2.12. The auditor should describe what methodologies were used to select sample sizes and what standards these methodologies conform to.

### **Conclusions and qualifications**

- 2.13. This includes the auditor's opinion and any qualifications to that opinion. The opinion should be expressed to a 'limited' level as defined by ISAE 3000.
- 2.14. In a limited assurance engagement, the opinion should be expressed in the negative form, for example for an unqualified opinion: "Based on the work described in this report, nothing has come to our attention that causes us to believe that NDRHI periodic data claims during the period of DD/MM/YYYY to DD/MM/YYYY is not accurate, in all material respects, based on XYZ criteria."
- 2.15. There are times that it may be appropriate for the verifier to express a qualified opinion. This will be the case if the verification has brought issues to light. These issues may not be material enough to affect the verification outcome, but are nonetheless still relevant to how the audit report is prepared. A qualified opinion will be stated the same way as an unqualified opinion with the addition of "with the exception of X, Y and Z".
- 2.16. Reports given with qualified opinions will be carefully assessed by Ofgem, particularly if a comment recurs year after year.

### **Evidence summary**

- 2.17. Producers are required to hold evidence both about the biomethane claimed for under the NDRHI, and/or gas supplied to shippers, traders or suppliers. This should be provided to the auditor for their report and show the annual amount claimed for against NDRHI and, if applicable, the amount claimed against – or that could go on to be claimed against – the RTFO via RTFCs during the same period.
- 2.18. Ofgem expects that biomethane which has been claimed for against the NDRHI would be sold with appropriate documentation provided to the buyer which confirms this. This could be one, or a combination of, documents taken together to provide detailed information regarding provenance, feedstocks and proportions claimed against NDRHI, to be retained through the chain of custody of the

biomethane, from production to end use. This is in line with the information required by the DfT for participation on the RTFO.

2.19. An auditor should be able to access evidence and/or documentation demonstrating whether a biomethane producer has:

- i) claimed RHI support for their gas
- ii) had gas not claimed for on RHI and that has been sold on - allowing an RTFO claim by another party
- iii) split a claim for support between the RHI and RTFO, and by what proportion.

2.20. We recognise some producers may never claim RTFO support, making it relatively simple for an auditor to evidence this through injection data.

2.21. We also recognise that producers who sell on gas to another party may not be able to retain or present evidence about the whole contractual chain relating to that gas, or the activity of any other parties within that chain.

2.22. For this reason, auditors will need to check the sale documentation between the first two parties in the contractual chain: the biomethane producer and the first trading counterparty. This contractual documentation must provide the auditor with assurance that a producer is taking reasonable steps to prevent double claiming.

Specifically the auditor should check the biomethane producer's standard contracts (or the relevant clauses therein) and/or warranties to ensure they contain the necessary clauses relating to any NDRHI claim and sustainability information in respect of the consignment being sold.

The scheme obligations clearly state that Ofgem may not make payment if an RTFC has been issued for the same gas<sup>107</sup>. This documentation should therefore provide assurance to an auditor that a producer is taking all reasonable steps against dual claims on their gas.

---

<sup>107</sup> 'Interaction with the Renewable Transport Fuel Obligation', regulation 32A.-(2) [The Renewable Heat Incentive Scheme Regulations 2018 \(legislation.gov.uk\)](https://www.legislation.gov.uk/ukdsi/2018/0001/20180001.pdf)

- 2.23. The auditor must also supply and verify the accuracy, reliability and robustness of any supporting evidence submitted as proof of a 'contractual supply chain' for injected biomethane purchased from a producer by suppliers, traders or shippers.
- 2.24. Documentation could include, but is not limited to, any combination of the following:
- a) Commercial contracts which demonstrate transactions between the producer and suppliers / traders / shippers
  - b) Additional transactional agreements between the producer and suppliers / traders / shippers
  - c) Supporting documentation to suppliers / traders / shippers by the producer with the sale – including documentation demonstrating the sustainable characteristics of the biomethane
  - d) Documentation from voluntary schemes and industry-led green gas registries which demonstrates the proportions claimed against each scheme
  - e) Documentation or correspondence from the Department for Transport (DfT) pertaining directly to the RTFO scheme
  - f) Screenshots from the RTFO online system
  - g) GEMINI data
  - h) Please note: The accreditation of a producer with a voluntary certification scheme is not sufficient in itself – it is the information within the certificate that may be of use for an auditor's assurance purposes
- 2.25. We recognise that different market structures and potential trading arrangements apply. As such, we are not able to comprehensively list all the specific types of acceptable documentary evidence. However, proof of a clear contractual chain linking the biomethane producer with all the relevant parties, be they shippers, traders or suppliers, will be required in any case.
- 2.26. The auditor must check that specific evidence exists to demonstrate this proof. Contracts that show intent to supply are not sufficient. Contracts and invoices that evidence specific transactions after the fact are examples of acceptable evidence.

- 2.27. The contractual chain should provide details of the specific biomethane transactions made and should include clear evidence of quantities of gas having been traded from the point of production.

### **Fraud or error prevention measures**

- 2.28. The auditor should confirm that fraud prevention measures have been considered by the biomethane producer and summarise what the company does to prevent fraud.
- 2.29. The auditor should check the producer has suitably robust controls in place to reduce or prevent errors in their processes.

### **3. Ofgem validation**

- 3.1. Once the NDRHI/RTFO interaction audit section is submitted to Ofgem as part of the Annual Sustainability Audit Report, if there are any queries at this stage, either regarding validation against dual claiming or otherwise, we will email the producer asking for further information.
- 3.2. Once our review of the section is complete, we will then communicate with the biomethane producer within the usual timeframe.
- 3.3. Where Ofgem determines that a producer has received periodic support payments for the production of biomethane for which an RTFC has also been issued, we are highly likely to require the producer to repay those payments or to take the actions set out below on overpayment notices and offsetting.
- 3.4. Where a producer who is required to repay a specified sum fails to make payment in full by the date specified, Ofgem may recover any outstanding sum by offsetting it against future payments to be made to the producer, accepting a repayment from the producer, or recovering the amount as a civil debt. Repeated non-compliance may result in further enforcement action being taken.

- 3.5. However, if an overpayment to a producer has resulted from an error by Ofgem, we will seek to agree with the producer an appropriate schedule for repayment of the sum due, which may include the ability to repay the amount by instalments or through offsetting against future payments over a more extended period.
  
- 3.6. Where a producer considers that repayment of a previous overpayment is likely to result in significant hardship, they should contact Ofgem to discuss the position as soon as possible after receiving a notice to repay.