



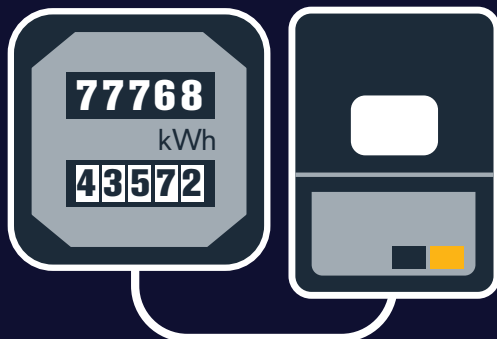
THE RADIO SIGNAL THAT CONTROLS RTS ELECTRICITY METERS IS BEING SWITCHED OFF



The switch off will affect energy consumers that have an RTS electricity meter in their business.



It may mean that your heating and hot water supply stops working as normal.



WHAT IS THE RADIO TELESWITCH SERVICE (RTS)?

RTS uses a radio signal to tell some older electricity meters when to switch between peak and off-peak rates. It's coming to an end because the service has reached the end of its operational life. If you have an RTS electricity meter it will need to be replaced.

**If your energy supplier contacts you
take action to book your installation**

You can visit the Ofgem website for more information:

www.ofgem.gov.uk/replacing-your-radio-teleswitch-electricity-meter

