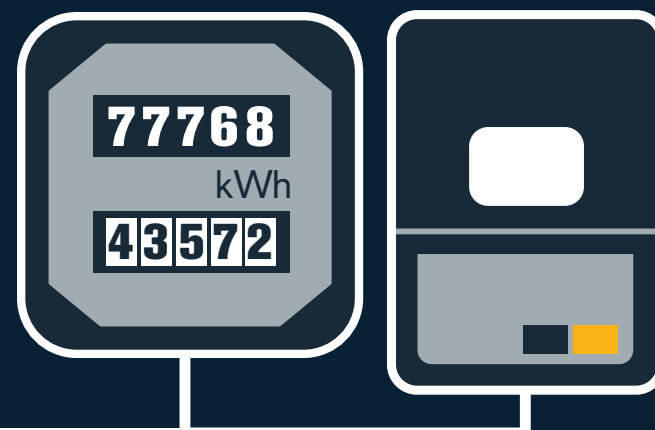


IMPORTANT



DO YOU HAVE AN RTS ELECTRICITY METER?



From June this year the signal that controls RTS electricity meters is being switched off.

This means if you have an RTS meter your heating and hot water may stop working as normal.

You might have an RTS meter if:

- your home has a separate switch box near your meter with a Radio Teleswitch label on it
- your home is heated using electricity or storage heaters
- there is no gas supply to your area
- you get cheaper energy at different times of day

If your supplier has been in touch about getting a new meter, contact them now.

Visit the Ofgem website for more information:
www.ofgem.gov.uk/rts

ofgem