

Domestic Renewable Heat Incentive (DRHI)

www.ofgem.gov.uk/drhi

MAY 2022

Quarterly Report Issue 32

The Domestic Renewable Heat Incentive (DRHI) opened for applications on 9 April 2014 for customers across England, Scotland and Wales who install eligible renewable heating technologies in their homes. This report details scheme activity in Quarter 4 (Year 8) of the Domestic RHI scheme, covering the period February 2022 to April 2022.

Number of accreditations

Figure 1: Number of accreditations made per quarter

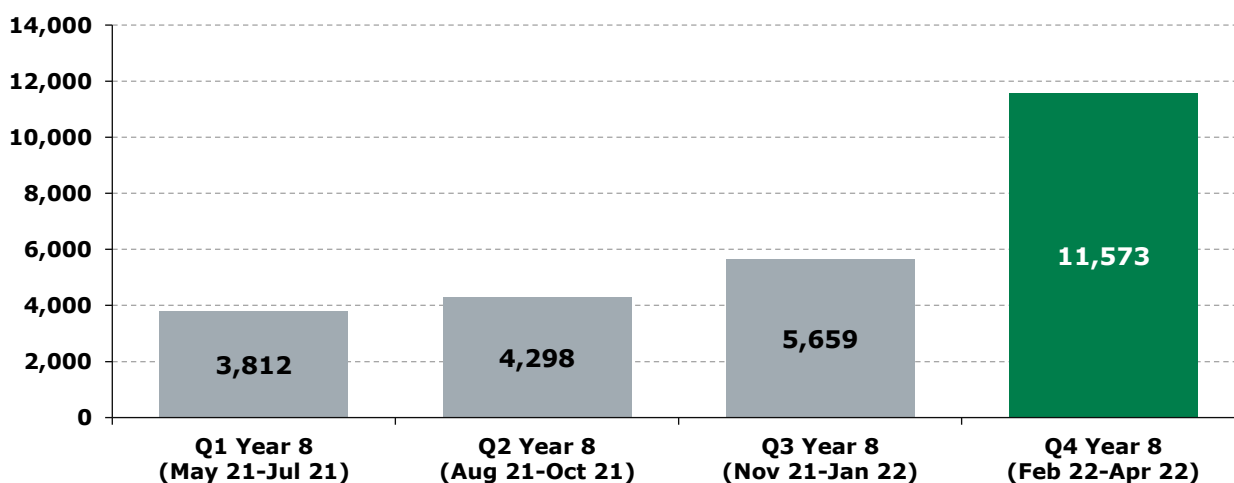


Table 1: Number of accreditations made per month

May 21	Jun 21	Jul 21	Aug 21	Sep 21	Oct 21	Nov 21	Dec 21	Jan 22	Feb 22	Mar 22	Apr 22
1,133	1,307	1,372	1,356	1,337	1,605	1,706	1,796	2,157	2,749	7,530	1,294

111,442

**Total number of systems
accredited to the scheme**

Legacy and new accreditations

Legacy accreditations are systems that were commissioned between 15 July 2009 when the RHI was first announced by DECC (now BEIS), and 9 April 2014 when the Domestic RHI scheme launched. New systems are those that were commissioned on or after 9 April 2014.

Table 2: Quarterly legacy and new accreditation numbers

Period	Legacy	New
Q1 (Year 8)	56	3,756
Q2 (Year 8)	23	4,275
Q3 (Year 8)	21	5,638
Q4 (Year 8)	5	11,568

Figure 2: Cumulative accreditations by application type

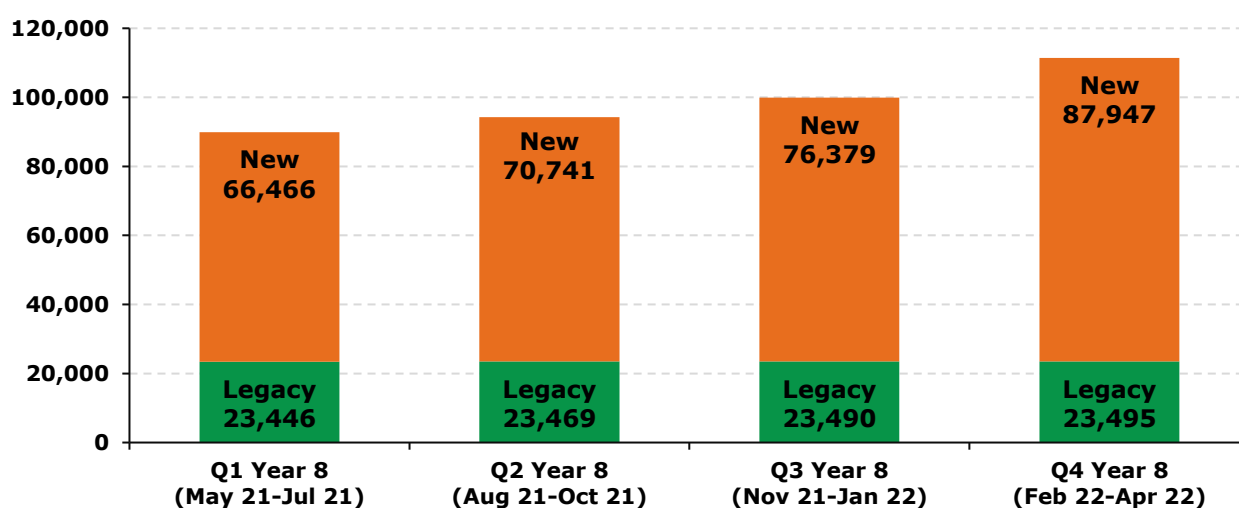
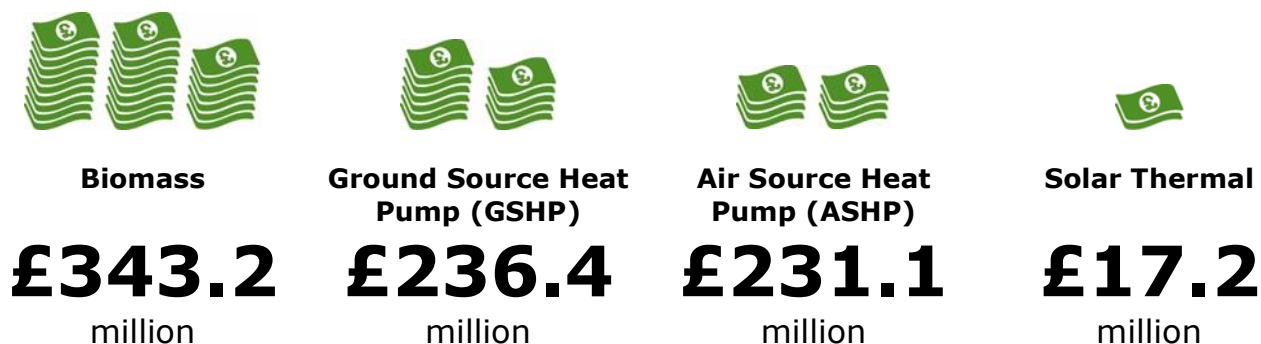


Table 3: Cumulative accreditations by application type

Period	Legacy	New	Total
Q1 (Year 8)	23,446	66,466	89,912
Q2 (Year 8)	23,469	70,741	94,210
Q3 (Year 8)	23,490	76,379	99,869
Q4 (Year 8)	23,495	87,947	111,442

Payments made to date

The total number of payments made to accredited systems since the scheme began, by technology type.



Accreditations by technology for new applications

The graph below shows the cumulative number of accredited systems per technology type for new systems only (systems commissioned on or after 9 April 2014). Air Source Heat Pumps continue to be the most popular technology type installed under the DRHI scheme, accounting for 84.0% of total new accreditations this quarter.

Figure 3 (a-d): Cumulative accreditations by technology type for 'New' systems

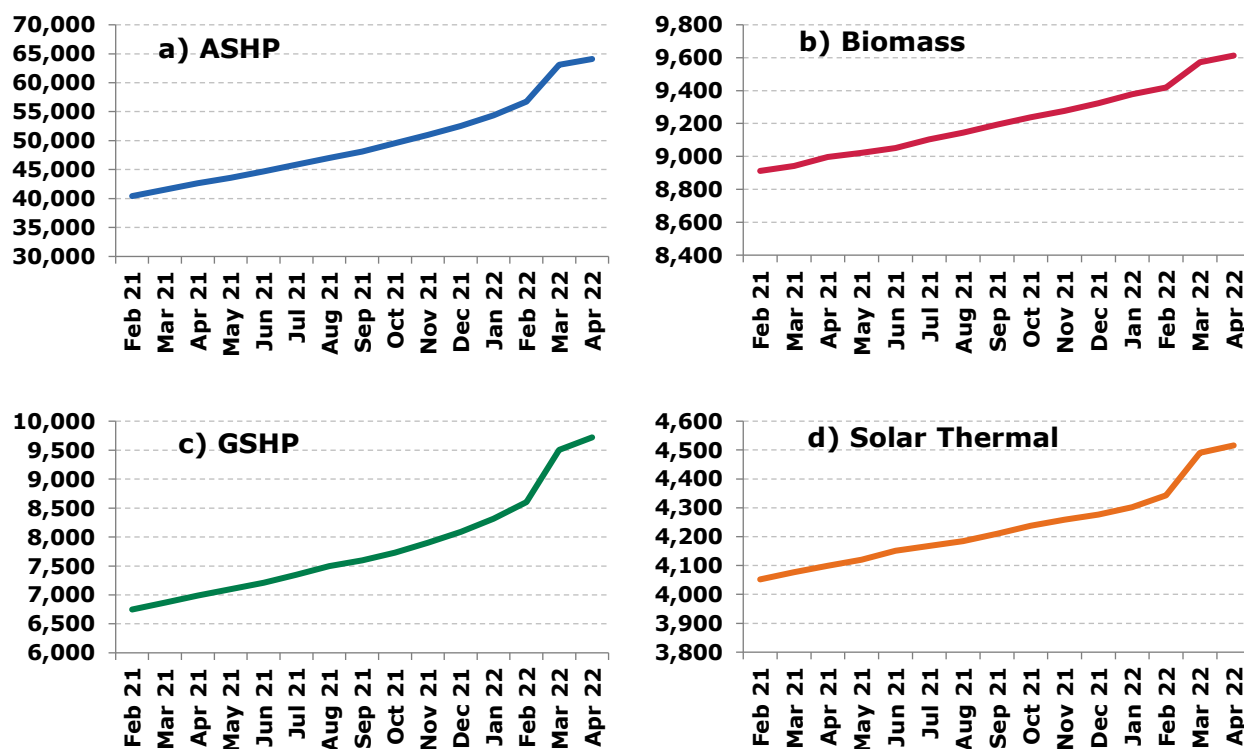
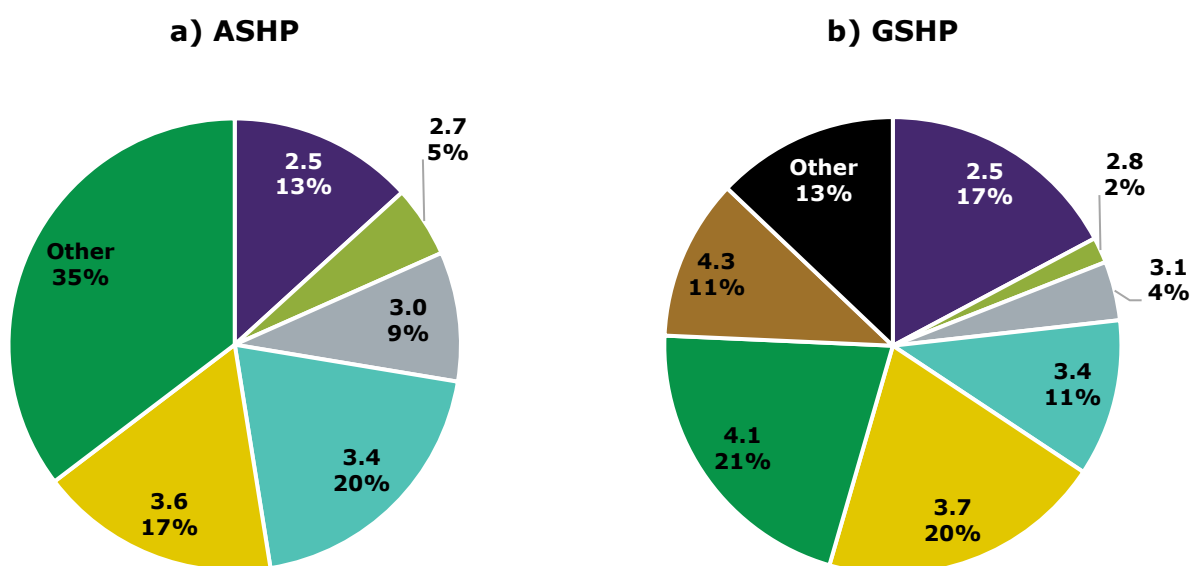


Table 4: Cumulative accreditations by technology type for 'New' systems

Period	ASHP	Biomass	GSHP	Solar Thermal
Q1 (Year 8)	45,849	9,103	7,346	4,168
Q2 (Year 8)	49,538	9,237	7,728	4,238
Q3 (Year 8)	54,383	9,377	8,317	4,302
Q4 (Year 8)	64,098	9,613	9,720	4,516

Seasonal Performance Factors

The Seasonal Performance Factor (SPF) of a heat pump is a measure of how efficiently it is operating. The higher the SPF, the more energy efficient the system is. Only heat pumps with SPFs of 2.5 or higher can be eligible for Domestic RHI. All legacy systems were automatically assigned an SPF of 2.5, unless the applicant provided SPF calculations completed by the installer.

Figure 4 (a & b): Heat Pump SPFs**Table 5: ASHP SPFs**

SPF	2.5	2.7	3.0	3.4	3.6	Other
% of installations	13%	5%	9%	20%	17%	35%

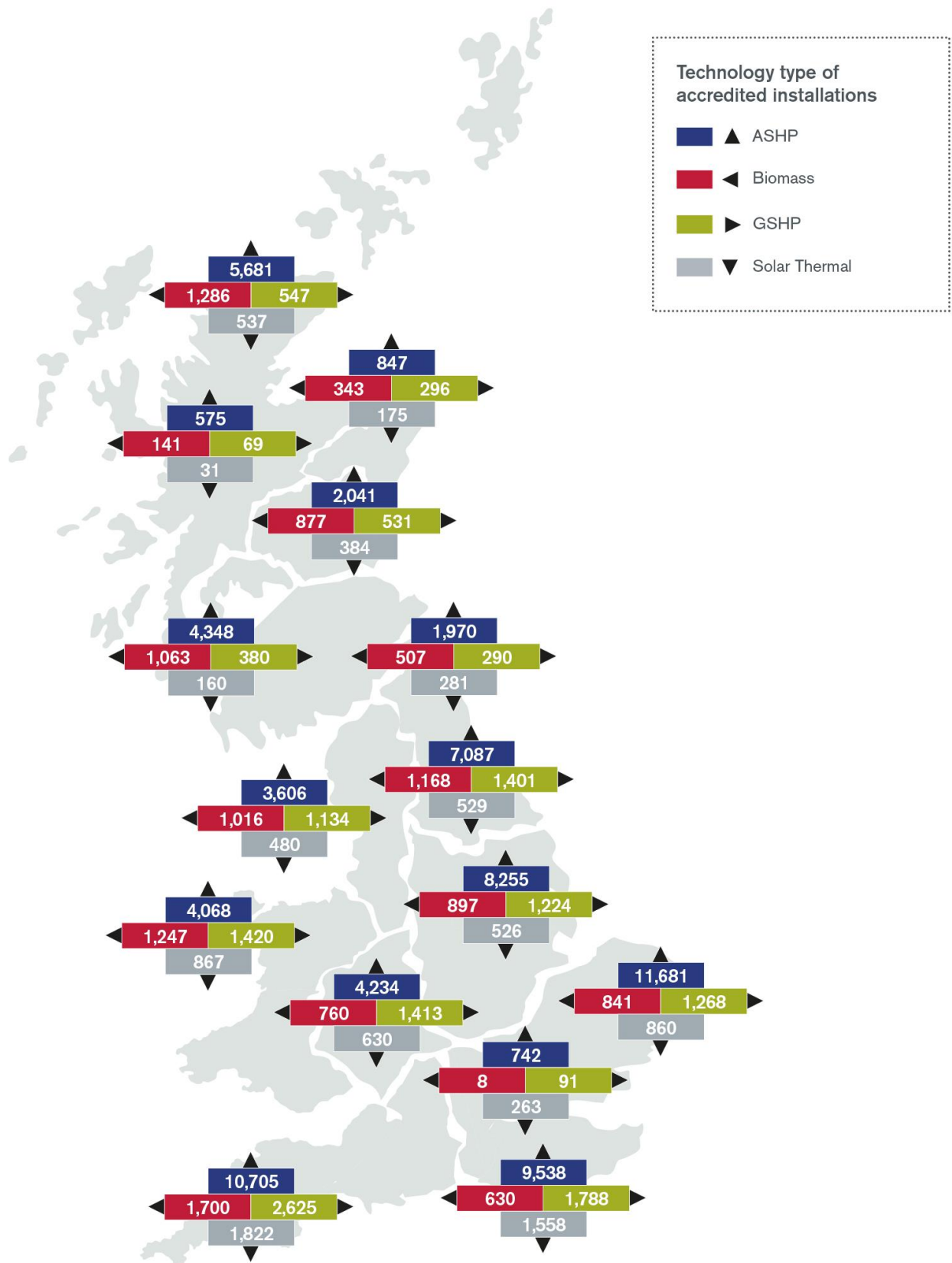
Table 6: GSHP SPFs

SPF	2.5	2.8	3.1	3.4	3.7	4.1	4.3	Other
% of installations	17%	2%	4%	11%	20%	21%	11%	13%

Regional distribution of accreditations

Table 7: Total accreditations per region

Location	ASHP	Biomass	GSHP	Solar Thermal	Grand Total
South West England	10,705	1,700	2,625	1,822	16,852
East England	11,681	841	1,268	860	14,650
South East England	9,538	630	1,788	1,558	13,514
East Midlands	8,255	897	1,224	526	10,902
Yorkshire and The Humber	7,087	1,168	1,401	529	10,185
Highlands & Islands	5,681	1,286	547	537	8,051
Wales	4,068	1,247	1,420	867	7,602
West Midlands	4,234	760	1,413	630	7,037
North West England	3,606	1,016	1,134	480	6,236
Southern Scotland	4,348	1,063	380	160	5,951
East Scotland	2,041	877	531	384	3,833
North East England	1,970	507	290	281	3,048
North East Scotland	847	343	296	175	1,661
London	742	8	91	263	1,104
West Central Scotland	575	141	69	31	816
Grand Total	75,378	12,484	14,477	9,103	111,442

Figure 4: Regional distribution of accredited systems by technology type

Registered Social Landlords

In addition to homeowners, Registered Social Landlords (RSLs) are also eligible to apply for the Domestic RHI. In the last twelve months, 4,061 accreditations have been made to RSLs, 99.1% (4,023) of which are Air Source Heat Pumps.

Figure 5: Registered social landlord accreditations by technology

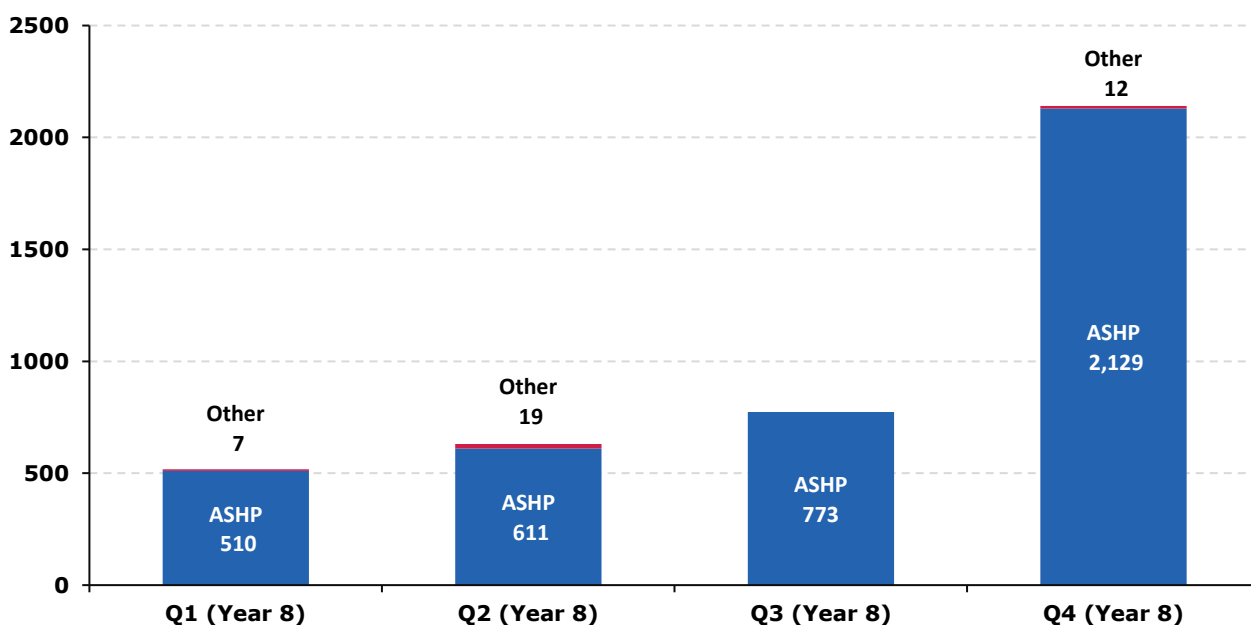


Table 7: Registered social landlord accreditations by technology

Period	Air Source Heat Pump	Biomass	Ground Source Heat Pump	Solar Thermal
Q1 (Year 8)	510	0	7	0
Q2 (Year 8)	611	0	18	1
Q3 (Year 8)	773	0	0	0
Q4 (Year 8)	2,129	0	1	11

In total, we have made over **£57.9m** of payments to Registered Social Landlords under the DRHI scheme to date.

Our Administration

- **89.8%** of applications submitted in this quarter received a decision within 30 working days.
- We estimate that accredited systems will save over **6.71 Mt** of CO₂ over the lifetime of the scheme.
- Since scheme launch, accredited systems have generated of **7,108 GWh** of renewable heat.
- If you have any questions about the content of this report, please let us know by emailing: domesticRHI@ofgem.gov.uk.