



ofgem E-Serve

Promoting choice and value  
for all gas and electricity customers

# The Feed-in Tariff scheme - Factsheet

Energy regulator Ofgem is administering the Government's Feed-in Tariff scheme which went live on 1st April 2010.

## What is the Feed-in Tariff scheme?

**The Feed-in-Tariff scheme (FITs) is an environmental programme introduced by the government to promote widespread uptake of a range of small-scale renewable and low-carbon electricity generation technologies.**

- The scheme requires Licensed Electricity Suppliers (FIT Licensees) to pay a generation tariff and an export tariff (where applicable) to small-scale low-carbon generators for electricity generated and any exported.
- The Feed-in Tariff has opened up low-carbon electricity generation beyond the traditional energy companies by making it more cost effective for communities and householders to buy the units.
- The scheme is applicable to a number of technologies (Photovoltaic, Wind, Hydro, and Anaerobic Digestion) up to a maximum capacity of 5MW of Total Installed Capacity (TIC). Micro Combined Heat and Power (CHP) plants are also eligible up to 2kW.
- Suppliers (FIT Licensees) play the main customer-facing role for this scheme: registering eligible installations, processing generation data, and making relevant payments.
- Ofgem is responsible for running the behind the scenes administration of the scheme ensuring supplier compliance and maintaining the integrity of a Central FITs Register (CFR).
- The initial point of contact for anyone wanting to find out more about electricity generation and how they can join the scheme is the Energy Saving Advice Service in England and Wales ([www.direct.gov.uk/savingenergy](http://www.direct.gov.uk/savingenergy) or 0300 123 1234) and the Energy Saving Trust in Scotland ([www.est.gov.uk/scotland](http://www.est.gov.uk/scotland) or 0800 512 012).
- From 1 December 2012; new provisions have been introduced for some community organisations and schools. There is also the introduction of preliminary application for prospective installations in the "ROO-FIT" application pathway. Please refer to the various guidance documents for details, available on FIT section of the Ofgem website.



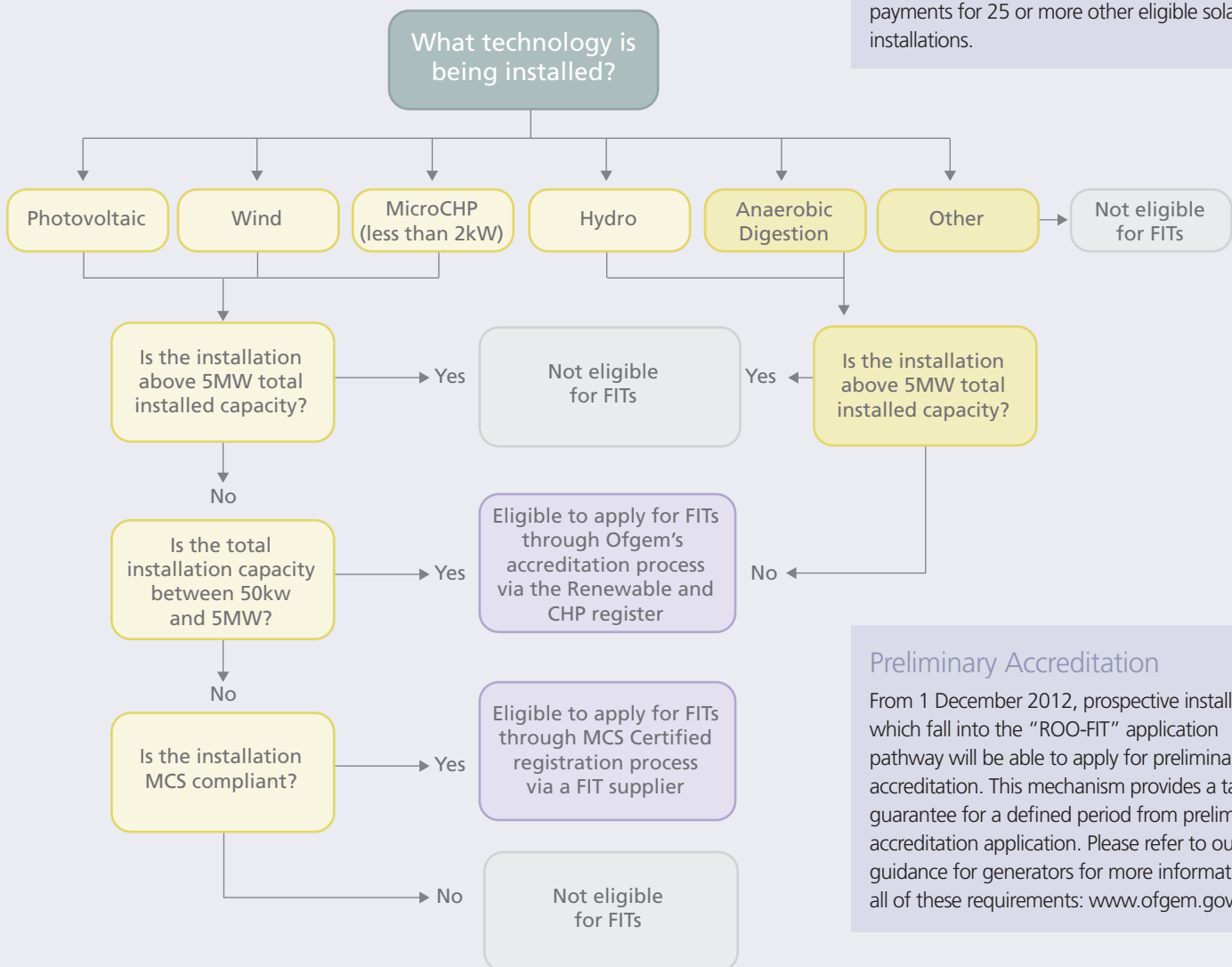
## How to apply for the scheme

**The first step in applying for the scheme is to check whether your renewable installation is eligible.**

Eligible installations of 50kW or below that were installed on or after 15th July 2009 within Great Britain will be able to directly apply for accreditation under FITs. These installations will be accredited through the Microgeneration Certification Scheme (MCS). More details can be found at [www.microgenerationcertification.org](http://www.microgenerationcertification.org).

Eligible installations of between 50kW – 5MW that were installed on or after 1st April 2010 within Great Britain will be able to directly apply for accreditation under FITs as part of the ROOFIT process on the Renewables and CHP Register. More details can be found at [www.renewablesandchp.ofgem.gov.uk](http://www.renewablesandchp.ofgem.gov.uk).

The diagram below shows the range of technologies that are eligible. It also explains how the accreditation process will work in each instance.



## Benefits for Communities & Schools

Some community organisations and schools with solar PV installations with a total installed capacity of 250kW or less, and an eligibility date on or after 1 December 2012, can receive a relaxation from current Energy Efficiency Requirement (any rating from A-G will be eligible). In some cases, non-domestic community organisations under 50kW will be eligible to pre-register for a „tariff guarantee“, prior to commissioning their installation. For more information, please see the „Community Organisations and Education Providers‘ tab on the FIT website.

## Energy Efficiency & Multi-tariff installation

Solar PV installations with a total installed capacity of 250kW or less, and an eligibility date on or after 1 April 2012, are required to meet an Energy Efficiency Requirement and will be assessed for the multi installation tariff. Where an installation is attached to or wired to provide power to a “relevant building”, it will be required to provide an Energy Performance Certificate with a rating of between A and D to meet the requirement. The multi installation tariff will apply to installations where the FIT generator or nominated recipient already owns or receives payments for 25 or more other eligible solar PV installations.

## Preliminary Accreditation

From 1 December 2012, prospective installations which fall into the “ROO-FIT” application pathway will be able to apply for preliminary accreditation. This mechanism provides a tariff guarantee for a defined period from preliminary accreditation application. Please refer to our guidance for generators for more information on all of these requirements: [www.ofgem.gov.uk/fit](http://www.ofgem.gov.uk/fit)

## Applications for accreditation under the Feed-in Tariff will go through one of two routes:



1

Customers using renewable technologies equal to or less than 50kW which are wind or solar PV will need to ensure their units are installed and accredited by Microgeneration Certification Scheme (MCS) certified installers as set out under the FIT legislation. Non-MCS certified installations of 50kW or less of wind or solar PV will not be eligible for FITs. Hydro installations are unable to use the MCS accreditation route until April 2012, so currently they must apply via Ofgem's ROOFIT process (see Route 2).

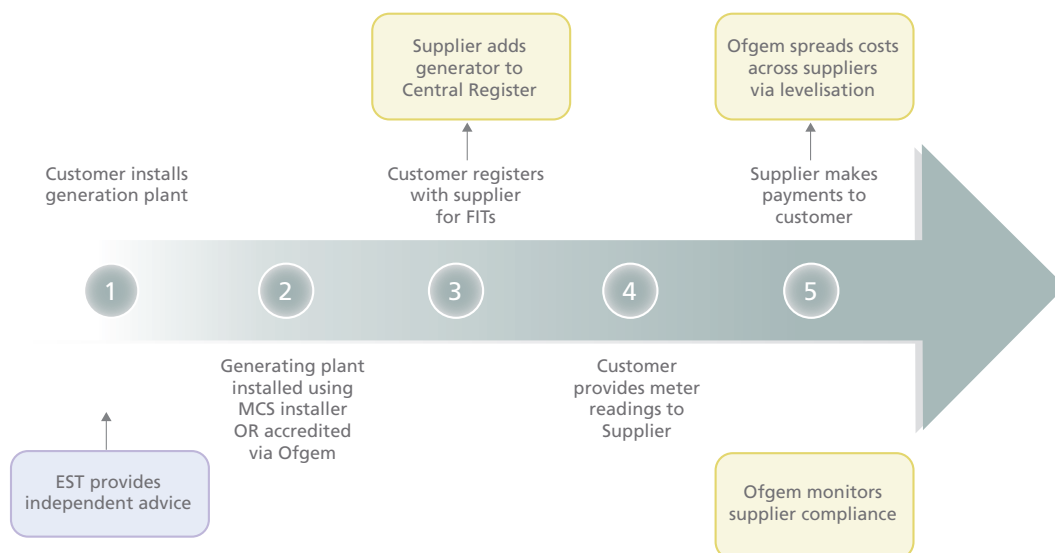
Generators will need to contact a FIT supplier once the installation has been commissioned to commence the accreditation and registration process.

A pilot programme is being run to allow micro combined heat and power (Micro CHP) units to participate, provided their capacity is not greater than 2kW. Micro-CHP units would also need to be fitted and accredited through the MCS. More information on MCS installers and products is available at [www.microgenerationcertification.org](http://www.microgenerationcertification.org)

2

All installations that are eligible and are between 50kW and 5MW in capacity (and any Anaerobic Digestion or Hydro plants up to 5MW) will need to apply to Ofgem directly for accreditation through Ofgem's Renewable and CHP Register [www.renewablesandchp.ofgem.gov.uk](http://www.renewablesandchp.ofgem.gov.uk). Upon completion of this process, applicants will need to contact a FIT Licensee with the accreditation details.

The diagram below outlines the FIT scheme registration and payments process:



The rates that customers receive under the FITs have been set by DECC and are listed in tariff tables published on our website [www.ofgem.gov.uk/FITs](http://www.ofgem.gov.uk/FITs). Once registered for FITs, the generation tariff received will last for the tariff lifetime (as set out in the Licence Conditions) and will be adjusted annually for inflation based on RPI.

More information about the FITs scheme is available at [www.ofgem.gov.uk/fits](http://www.ofgem.gov.uk/fits)